

Data Path : Z:\pestpcbsrv\HPCHEM1\ECD_L\Data\PL011019\
 Data File : PL043779.D
 Signal(s) : Signal #1: ECD1A.ch Signal #2: ECD2B.ch
 Acq On : 10 Jan 2019 21:41
 Operator : AJ\SJ
 Sample : PB116305TB
 Misc :
 ALS Vial : 30 Sample Multiplier: 1

Instrument :
 ECD_L
 ClientSampleId :
 PB116305TB

Manual Integrations
 APPROVED

Sohil
 1/11/2019 10:20:27 AM

Integration File signal 1: autoint1.e
 Integration File signal 2: autoint2.e
 Quant Time: Jan 11 00:01:45 2019
 Quant Method : Z:\pestpcbsrv\HPCHEM1\ECD_L\methods\PL011019.M
 Quant Title : GC Extractables
 QLast Update : Thu Jan 10 23:34:12 2019
 Response via : Initial Calibration
 Integrator: ChemStation

Volume Inj. : 2 µl
 Signal #1 Phase : ZB-MR1 Signal #2 Phase: ZB-MR2
 Signal #1 Info : 30M x 0.32mm x0.5 Signal #2 Info : 30M x 0.32mm x0.25µm

Compound	RT#1	RT#2	Resp#1	Resp#2	ng/ml	ng/ml
----------	------	------	--------	--------	-------	-------

 System Monitoring Compounds

1) SA Tetrachlo...	3.528f	4.009	84307277	34438406	21.401m	20.694
28) SA Decachlor...	8.254	9.082	98664491	28900731	20.086m	21.499

Target Compounds

(f)=RT Delta > 1/2 Window (#)=Amounts differ by > 25% (m)=manual int.

Data Path : Z:\pestpcbsrv\HPCHEM1\ECD_L\Data\PL011019\
 Data File : PL043779.D
 Signal(s) : Signal #1: ECD1A.ch Signal #2: ECD2B.ch
 Acq On : 10 Jan 2019 21:41
 Operator : AJ\SJ
 Sample : PB116305TB
 Misc :
 ALS Vial : 30 Sample Multiplier: 1

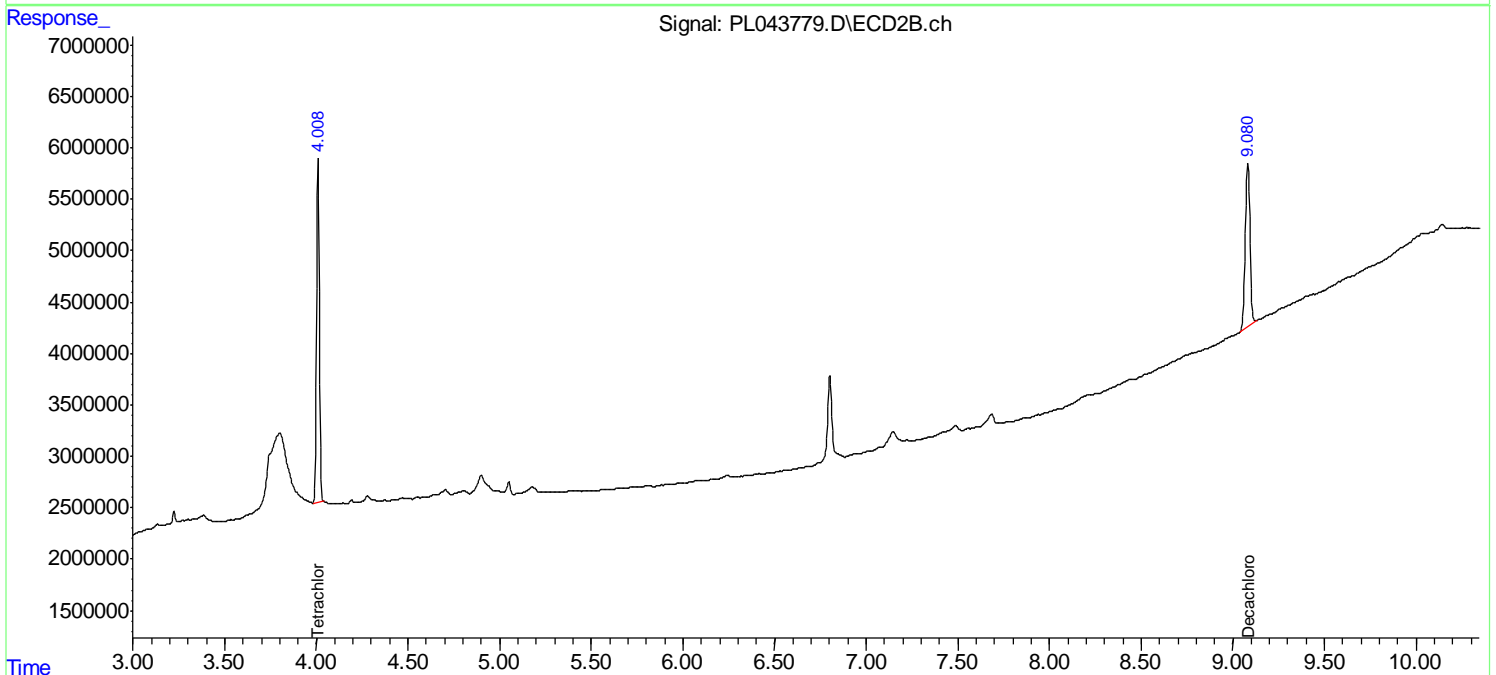
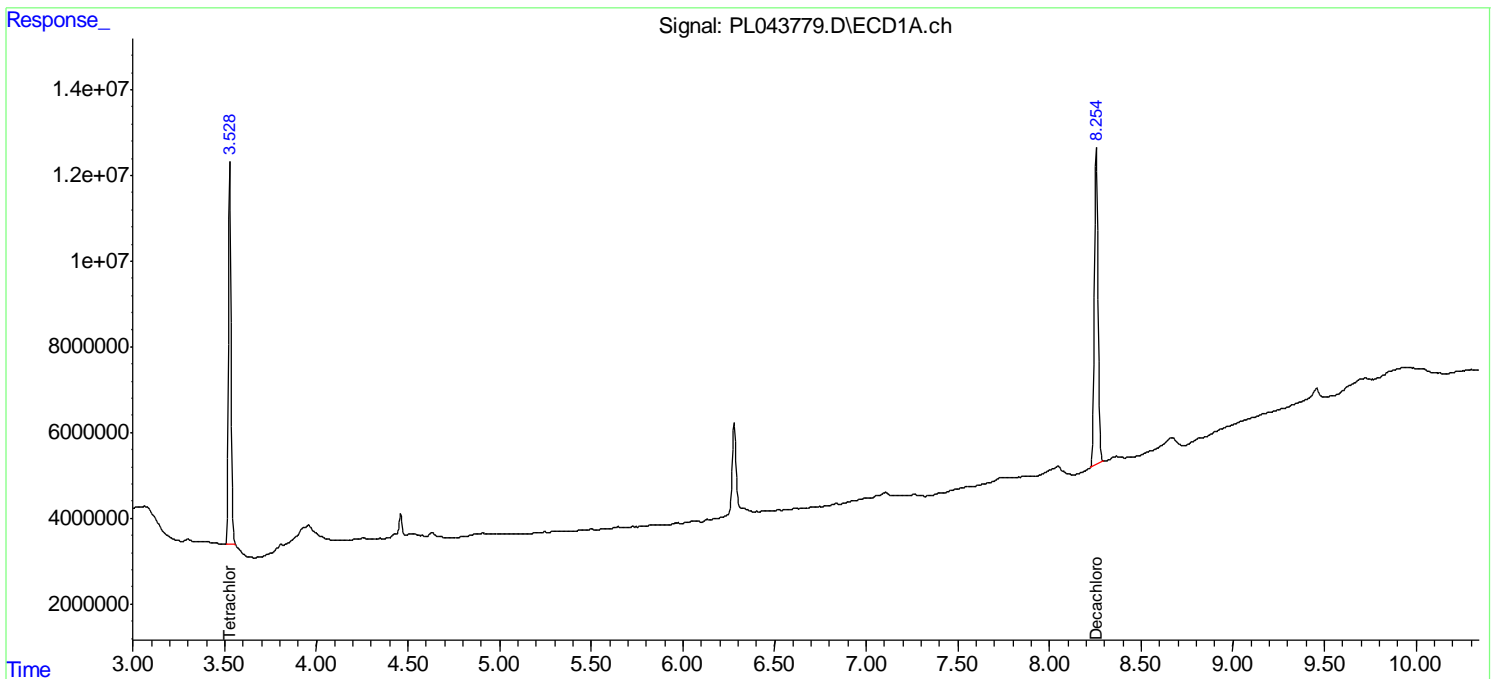
Instrument :
 ECD_L
 ClientSampleID :
 PB116305TB

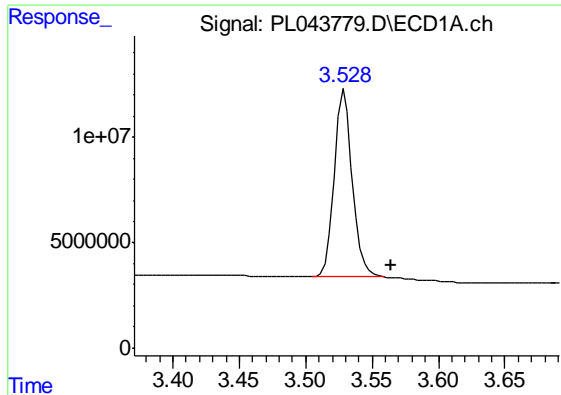
Manual Integrations
APPROVED

Sohil
 1/11/2019 10:20:27 AM

Integration File signal 1: autoint1.e
 Integration File signal 2: autoint2.e
 Quant Time: Jan 11 00:01:45 2019
 Quant Method : Z:\pestpcbsrv\HPCHEM1\ECD_L\methods\PL011019.M
 Quant Title : GC Extractables
 QLast Update : Thu Jan 10 23:34:12 2019
 Response via : Initial Calibration
 Integrator: ChemStation

Volume Inj. : 2 µl
 Signal #1 Phase : ZB-MR1 Signal #2 Phase: ZB-MR2
 Signal #1 Info : 30M x 0.32mm x0.5 Signal #2 Info : 30M x 0.32mm x0.25µm





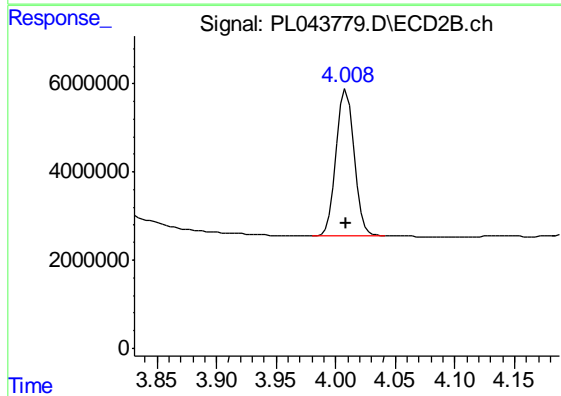
#1 Tetrachloro-m-xylene

R.T.: 3.528 min
 Delta R.T.: -0.036 min
 Response: 84307277
 Conc: 21.40 ng/ml m

Instrument :
 ECD_L
 ClientSampled :
 PB116305TB

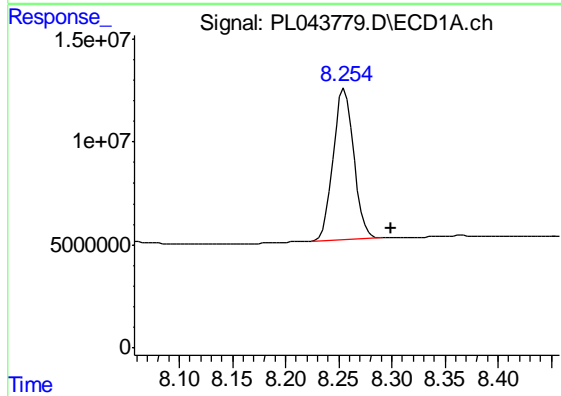
Manual Integrations
 APPROVED

Sohil
 1/11/2019 10:20:27 AM



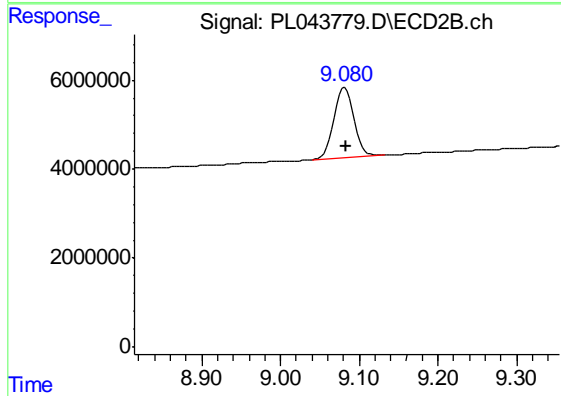
#1 Tetrachloro-m-xylene

R.T.: 4.009 min
 Delta R.T.: 0.000 min
 Response: 34438406
 Conc: 20.69 ng/ml



#28 Decachlorobiphenyl

R.T.: 8.254 min
 Delta R.T.: -0.045 min
 Response: 98664491
 Conc: 20.09 ng/ml m



#28 Decachlorobiphenyl

R.T.: 9.082 min
 Delta R.T.: -0.001 min
 Response: 28900731
 Conc: 21.50 ng/ml