

Data Path : Z:\pestpcbsrv\HPCHEM1\ECD_L\Data\PL011019\
 Data File : PL043780.D
 Signal(s) : Signal #1: ECD1A.ch Signal #2: ECD2B.ch
 Acq On : 10 Jan 2019 21:55
 Operator : AJ\SJ
 Sample : K1005-02
 Misc :
 ALS Vial : 31 Sample Multiplier: 1

Instrument :
 ECD_L
 ClientSampleId :
 HR-06-010918-A

Manual Integrations
 APPROVED

Sohil
 1/11/2019 10:20:29 AM

Integration File signal 1: autoint1.e
 Integration File signal 2: autoint2.e
 Quant Time: Jan 11 00:01:55 2019
 Quant Method : Z:\pestpcbsrv\HPCHEM1\ECD_L\methods\PL011019.M
 Quant Title : GC Extractables
 QLast Update : Thu Jan 10 23:34:12 2019
 Response via : Initial Calibration
 Integrator: ChemStation

Volume Inj. : 2 µl
 Signal #1 Phase : ZB-MR1 Signal #2 Phase: ZB-MR2
 Signal #1 Info : 30M x 0.32mm x0.5 Signal #2 Info : 30M x 0.32mm x0.25µm

Compound	RT#1	RT#2	Resp#1	Resp#2	ng/ml	ng/ml
----------	------	------	--------	--------	-------	-------

 System Monitoring Compounds

1) SA Tetrachlo...	3.528f	4.009	87072635	35294906	22.103m	21.208
28) SA Decachlor...	8.255	9.082	102.8E6	29690517	20.931m	22.086

Target Compounds

(f)=RT Delta > 1/2 Window (#)=Amounts differ by > 25% (m)=manual int.

Data Path : Z:\pestpcbsrv\HPCHEM1\ECD_L\Data\PL011019\
 Data File : PL043780.D
 Signal(s) : Signal #1: ECD1A.ch Signal #2: ECD2B.ch
 Acq On : 10 Jan 2019 21:55
 Operator : AJ\SJ
 Sample : K1005-02
 Misc :
 ALS Vial : 31 Sample Multiplier: 1

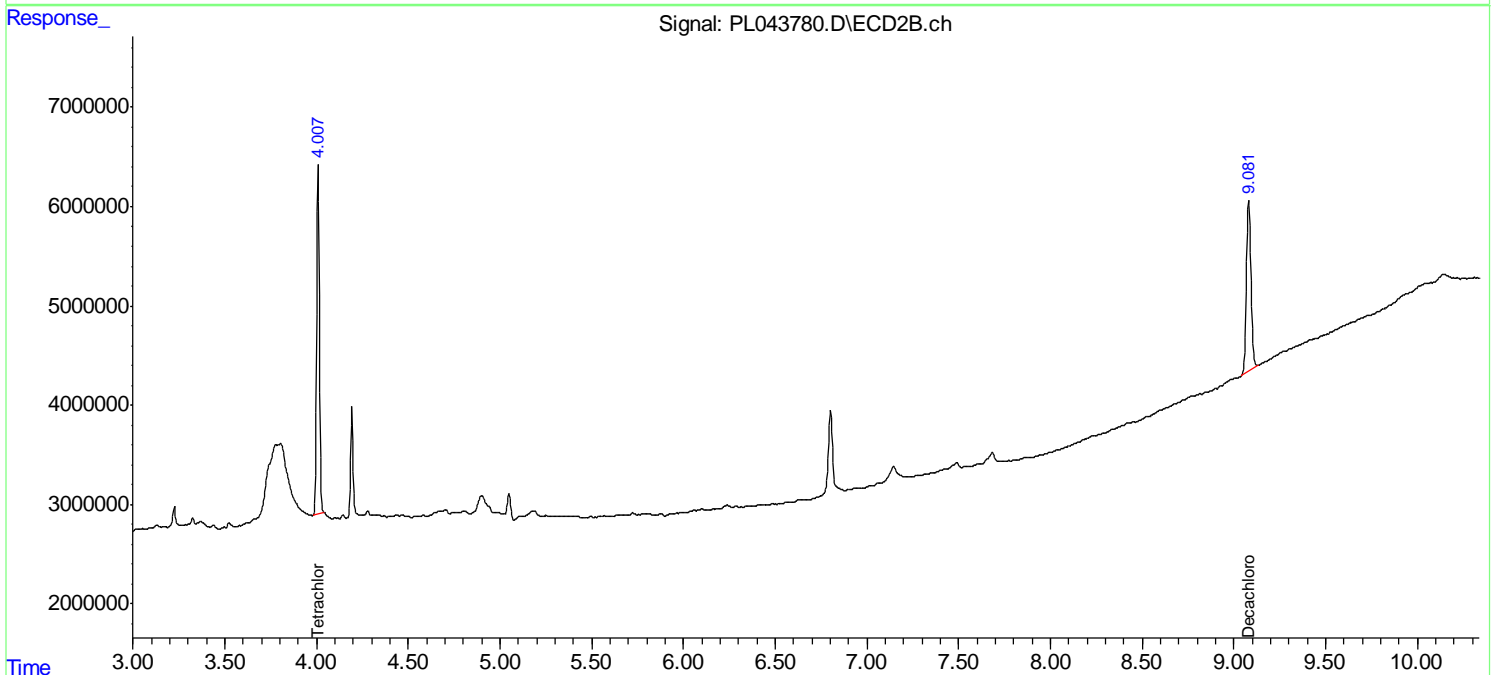
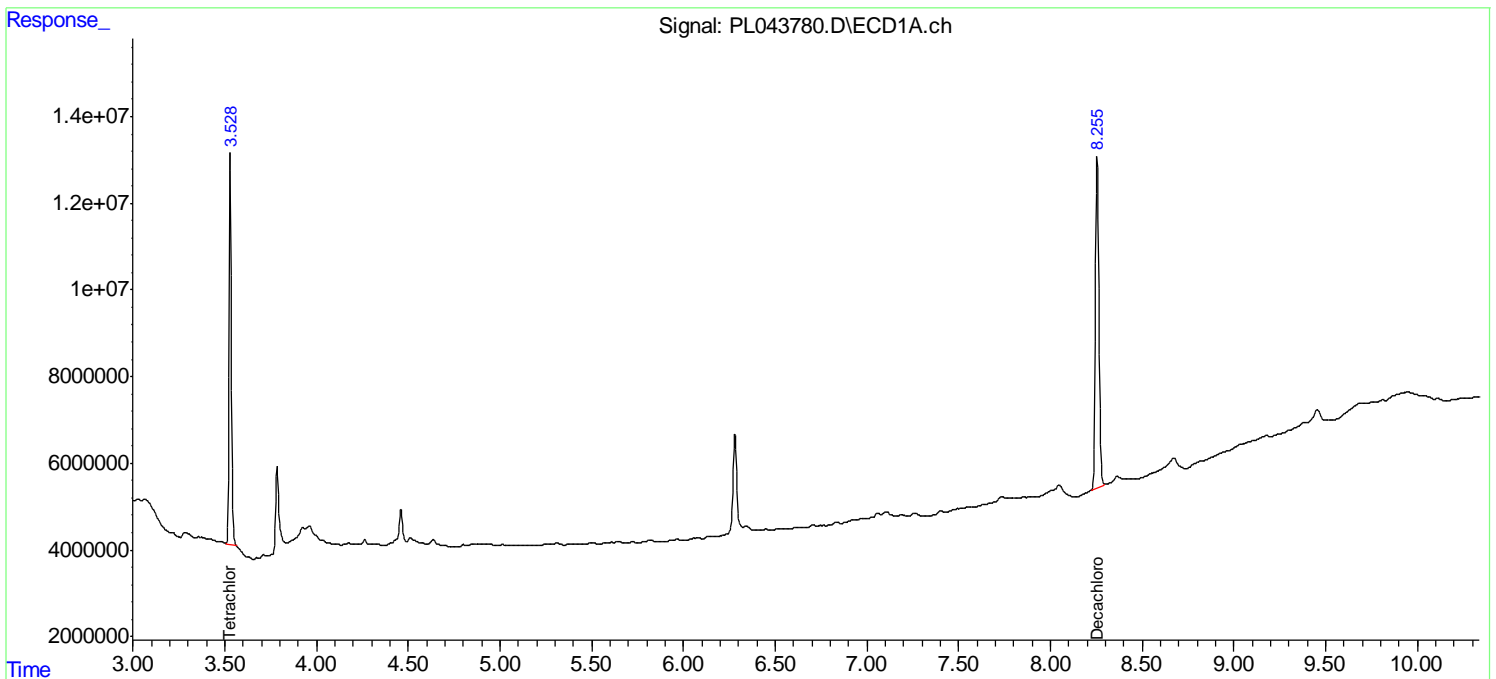
Instrument :
 ECD_L
 ClientSampleID :
 HR-06-010918-A

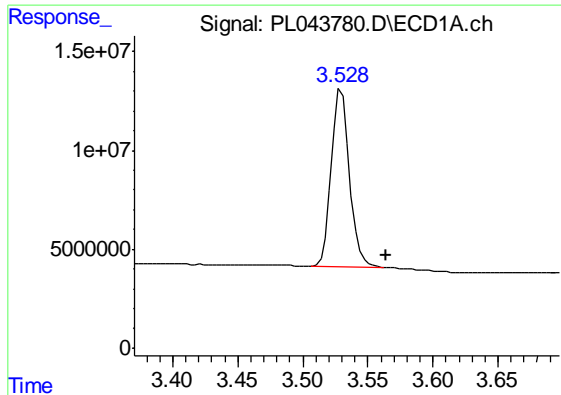
Manual Integrations
 APPROVED

Sohil
 1/11/2019 10:20:29 AM

Integration File signal 1: autoint1.e
 Integration File signal 2: autoint2.e
 Quant Time: Jan 11 00:01:55 2019
 Quant Method : Z:\pestpcbsrv\HPCHEM1\ECD_L\methods\PL011019.M
 Quant Title : GC Extractables
 QLast Update : Thu Jan 10 23:34:12 2019
 Response via : Initial Calibration
 Integrator: ChemStation

Volume Inj. : 2 µl
 Signal #1 Phase : ZB-MR1 Signal #2 Phase: ZB-MR2
 Signal #1 Info : 30M x 0.32mm x0.5 Signal #2 Info : 30M x 0.32mm x0.25µm

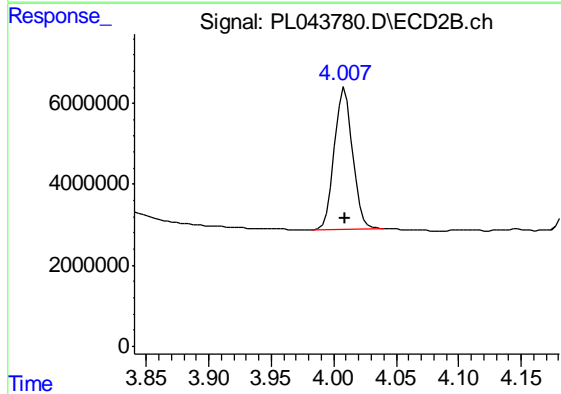




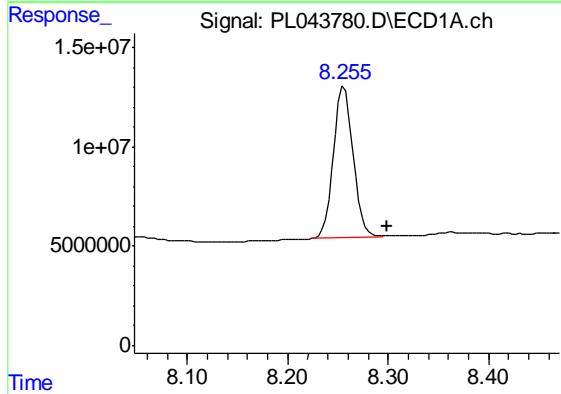
#1 Tetrachloro-m-xylene
 R.T.: 3.528 min
 Delta R.T.: -0.036 min
 Response: 87072635
 Conc: 22.10 ng/ml m

Instrument :
 ECD_L
 ClientSampled :
 HR-06-010918-A

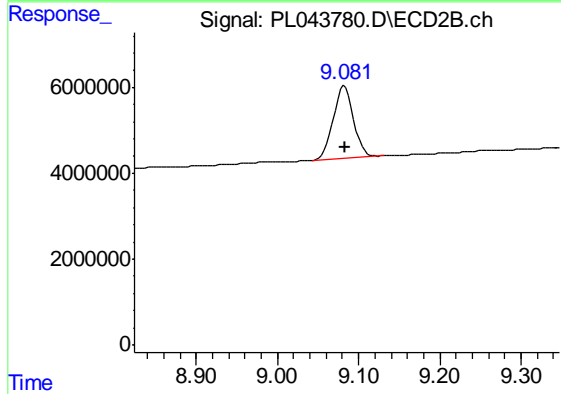
Manual Integrations
 APPROVED
 Sohil
 1/11/2019 10:20:29 AM



#1 Tetrachloro-m-xylene
 R.T.: 4.009 min
 Delta R.T.: 0.000 min
 Response: 35294906
 Conc: 21.21 ng/ml



#28 Decachlorobiphenyl
 R.T.: 8.255 min
 Delta R.T.: -0.044 min
 Response: 102814612
 Conc: 20.93 ng/ml m



#28 Decachlorobiphenyl
 R.T.: 9.082 min
 Delta R.T.: 0.000 min
 Response: 29690517
 Conc: 22.09 ng/ml