

Data Path : Z:\pestpcbsrv\HPCHEM1\ECD_L\Data\PL011022\
 Data File : PL071896.D
 Signal(s) : Signal #1: ECD1A.ch Signal #2: ECD2B.ch
 Acq On : 10 Jan 2022 11:01
 Operator : AR\AJ
 Sample : PB141897BS
 Misc :
 ALS Vial : 5 Sample Multiplier: 1

Instrument :
 ECD_L
 ClientSampleId :

Integration File signal 1: autoint1.e
 Integration File signal 2: autoint2.e
 Quant Time: Jan 11 01:29:19 2022
 Quant Method : Z:\pestpcbsrv\HPCHEM1\ECD_L\methods\PL010422.M
 Quant Title : GC Extractables
 QLast Update : Thu Jan 06 10:33:37 2022
 Response via : Initial Calibration
 Integrator: ChemStation

Volume Inj. : 1 µl
 Signal #1 Phase : ZB-MR2 Signal #2 Phase: ZB-MR1
 Signal #1 Info : 30M x 0.32mm x0.2 Signal #2 Info : 30M x 0.32mm x0.5µm

Compound	RT#1	RT#2	Resp#1	Resp#2	ng/ml	ng/ml

System Monitoring Compounds						
1) SA Tetrachlo...	4.565	5.495	9869837	26262550	21.366	21.375
28) SA Decachlor...	10.325	11.390	16169433	26005787	22.364	21.945
Target Compounds						
2) A alpha-BHC	5.271	6.076	32853960	94308567	53.208	54.093
3) MA gamma-BHC...	5.694	6.473	31754430	88317175	52.166	54.598
4) MA Heptachlor	6.100	7.119	36672894	91515547	53.720	57.111
5) MB Aldrin	6.423	7.489	32236492	83561213	51.199	54.239
6) B beta-BHC	6.078	6.732	14383510	41687456	53.161	58.345
7) B delta-BHC	6.336	6.998	32589247	87681953	52.114	57.118
8) B Heptachlo...	7.001	7.957	31913287	77679275	52.317	55.591
9) A Endosulfan I	7.403	8.362	30224186	69690127	53.368	56.265
10) B gamma-Chl...	7.278	8.227	32543652	76482638	52.486	55.932
11) B alpha-Chl...	7.348	8.308	32696115	74877029	52.804	56.262
12) B 4,4'-DDE	7.562	8.497	29709417	71838140	53.585	57.075
13) MA Dieldrin	7.689	8.652	30999721	70673312	51.399	53.867
14) MA Endrin	7.980	8.891	28083436	58766674	53.141	56.783
15) B Endosulfa...	8.292	9.127	28011313	58657618	48.459	52.234
16) A 4,4'-DDD	8.148	9.038	25180321	55759859	52.292	58.000
17) MA 4,4'-DDT	8.409	9.355	26872334	58692719	56.306	62.239
18) B Endrin al...	8.482	9.262	23457460	47303690	51.695	55.744
19) B Endosulfa...	8.712	9.500	29762850	57157998	50.900	55.020
20) A Methoxychlor	9.005	9.843	16305490	29293080	52.683	59.488
21) B Endrin ke...	9.231	9.996	35746958	62374429	51.583	55.271
22) Mirex	9.412	10.459	30607806	46176725	51.024	53.751
24) Chlordane-2	0.000	7.489f	0	83561213	N.D.	1543.775 #
25) Chlordane-3	7.278	8.227	32543652	76482638	500.827	374.709 #
26) Chlordane-4	7.348	8.308	32696115	74877029	465.562	307.605 #
27) Chlordane-5	8.292	0.000	28011313	0	1173.310	N.D. #

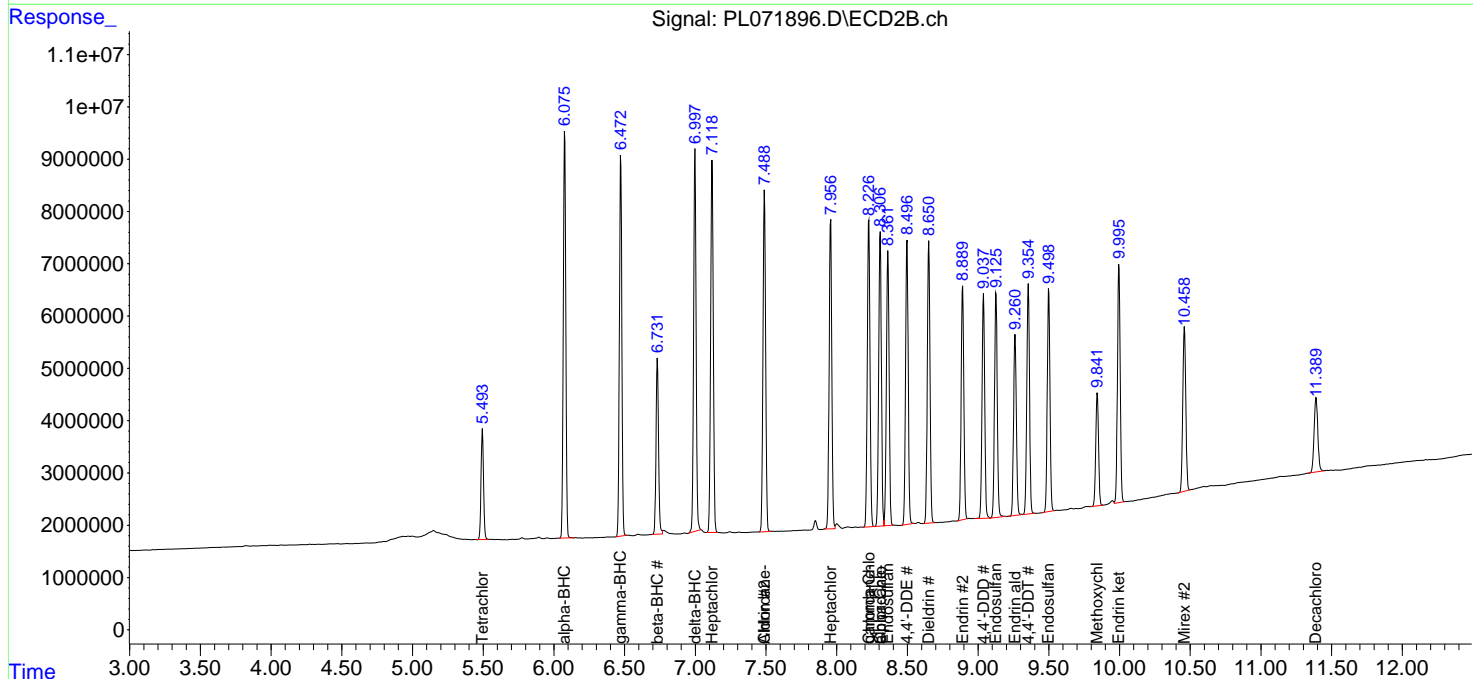
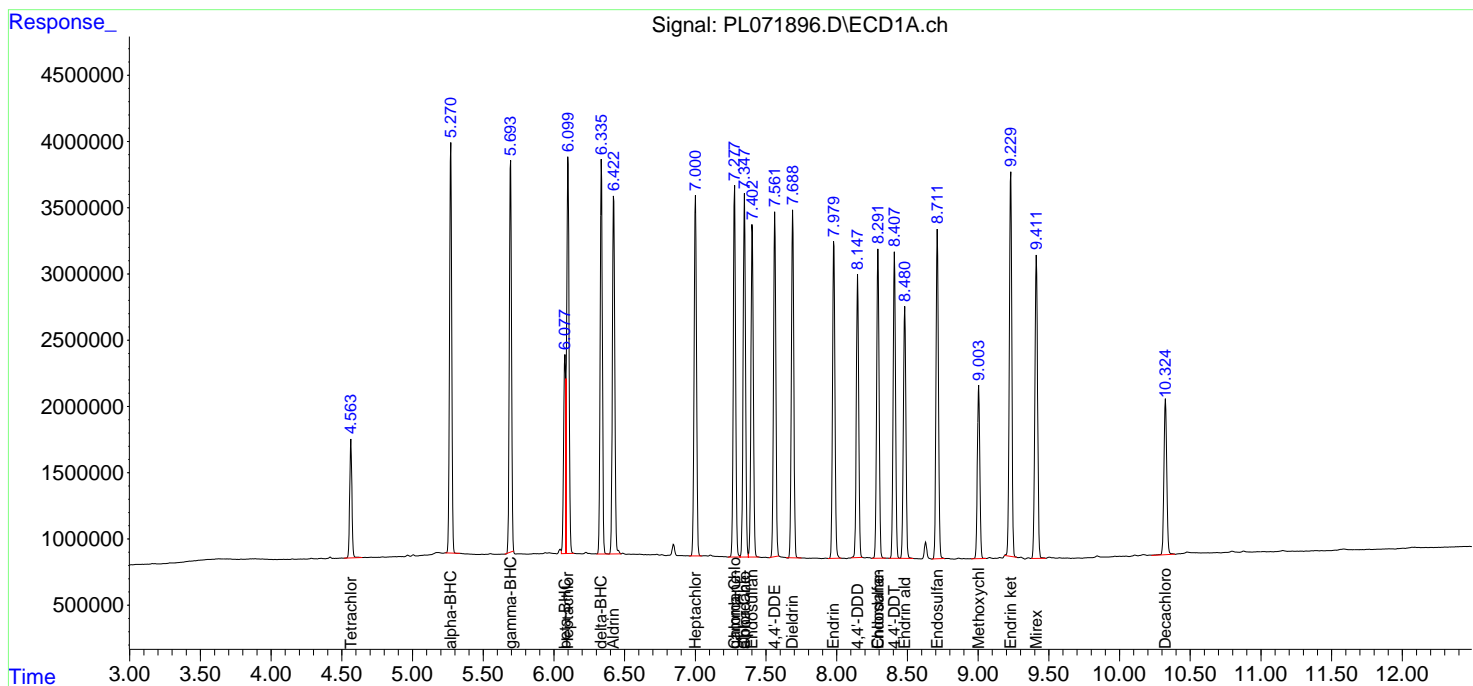
(f)=RT Delta > 1/2 Window (#)=Amounts differ by > 25% (m)=manual int.

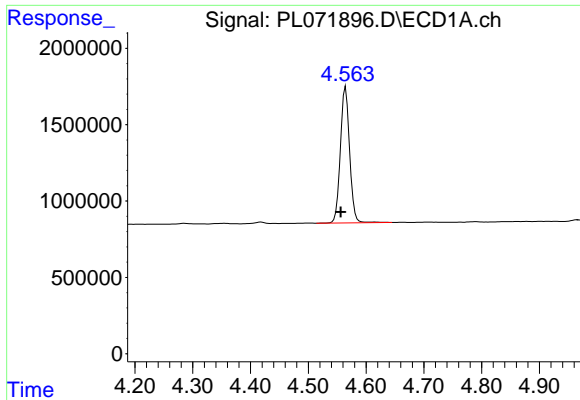
Data Path : Z:\pestpcbsrv\HPCHEM1\ECD_L\Data\PL011022\
 Data File : PL071896.D
 Signal(s) : Signal #1: ECD1A.ch Signal #2: ECD2B.ch
 Acq On : 10 Jan 2022 11:01
 Operator : AR\AJ
 Sample : PB141897BS
 Misc :
 ALS Vial : 5 Sample Multiplier: 1

Instrument :
 ECD_L
 ClientSampleId :

Integration File signal 1: autoint1.e
 Integration File signal 2: autoint2.e
 Quant Time: Jan 11 01:29:19 2022
 Quant Method : Z:\pestpcbsrv\HPCHEM1\ECD_L\methods\PL010422.M
 Quant Title : GC Extractables
 QLast Update : Thu Jan 06 10:33:37 2022
 Response via : Initial Calibration
 Integrator: ChemStation

Volume Inj. : 1 µl
 Signal #1 Phase : ZB-MR2 Signal #2 Phase: ZB-MR1
 Signal #1 Info : 30M x 0.32mm x0.2 Signal #2 Info : 30M x 0.32mm x0.5µm

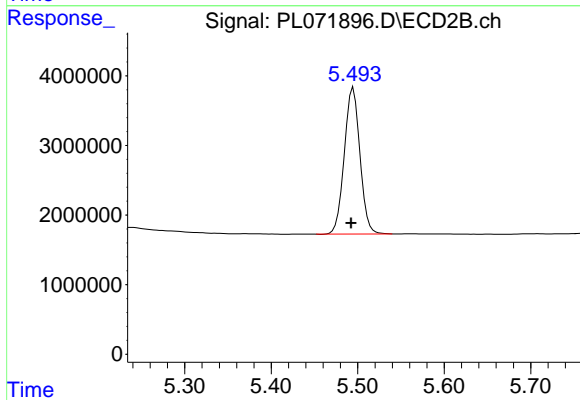




#1 Tetrachloro-m-xylene

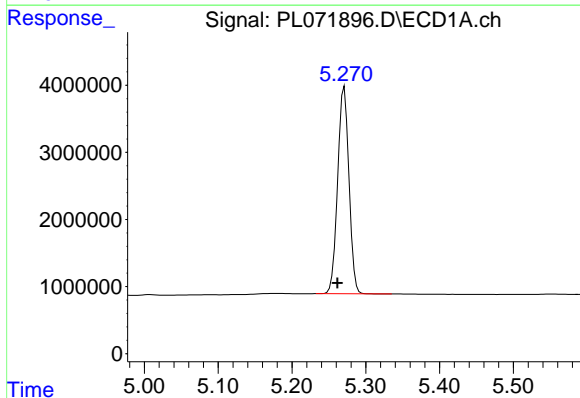
R.T.: 4.565 min
 Delta R.T.: 0.009 min
 Response: 9869837
 Conc: 21.37 ng/ml

Instrument :
 ECD_L
 ClientSampleId :



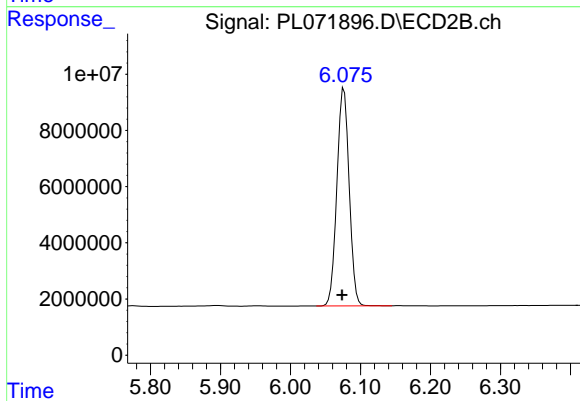
#1 Tetrachloro-m-xylene

R.T.: 5.495 min
 Delta R.T.: 0.002 min
 Response: 26262550
 Conc: 21.38 ng/ml



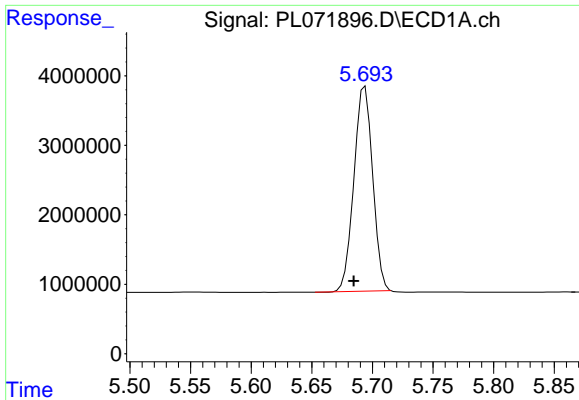
#2 alpha-BHC

R.T.: 5.271 min
 Delta R.T.: 0.009 min
 Response: 32853960
 Conc: 53.21 ng/ml



#2 alpha-BHC

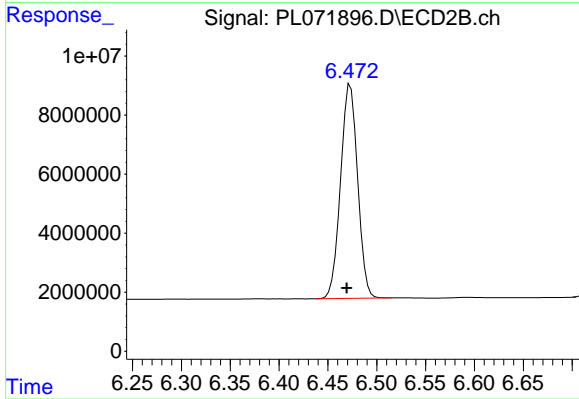
R.T.: 6.076 min
 Delta R.T.: 0.003 min
 Response: 94308567
 Conc: 54.09 ng/ml



#3 gamma-BHC (Lindane)

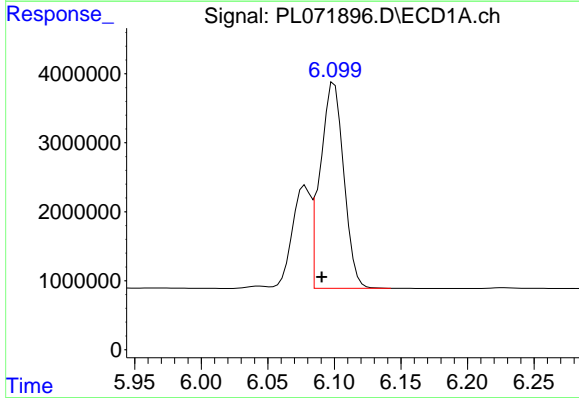
R.T.: 5.694 min
 Delta R.T.: 0.009 min
 Response: 31754430
 Conc: 52.17 ng/ml

Instrument :
 ECD_L
 ClientSampleId :



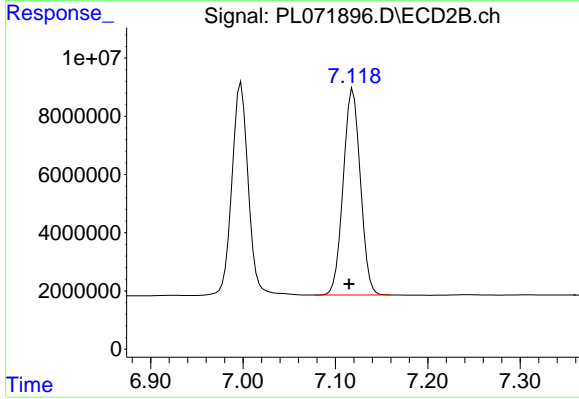
#3 gamma-BHC (Lindane)

R.T.: 6.473 min
 Delta R.T.: 0.004 min
 Response: 88317175
 Conc: 54.60 ng/ml



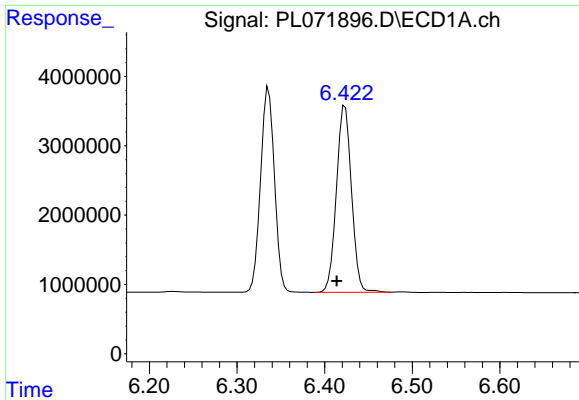
#4 Heptachlor

R.T.: 6.100 min
 Delta R.T.: 0.009 min
 Response: 36672894
 Conc: 53.72 ng/ml



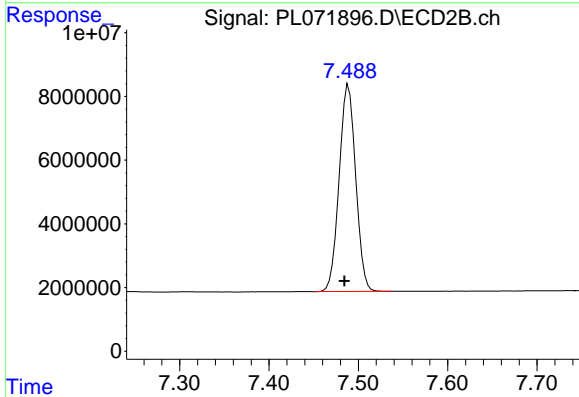
#4 Heptachlor

R.T.: 7.119 min
 Delta R.T.: 0.004 min
 Response: 91515547
 Conc: 57.11 ng/ml

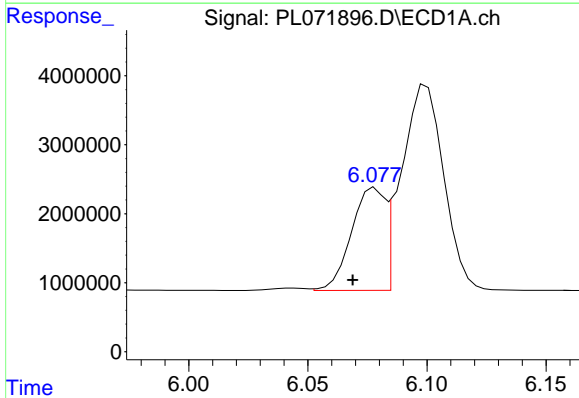


#5 Aldrin
 R.T.: 6.423 min
 Delta R.T.: 0.009 min
 Response: 32236492
 Conc: 51.20 ng/ml

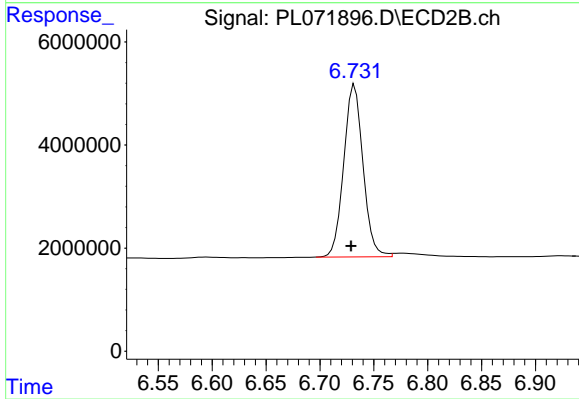
Instrument :
 ECD_L
 ClientSampleId :



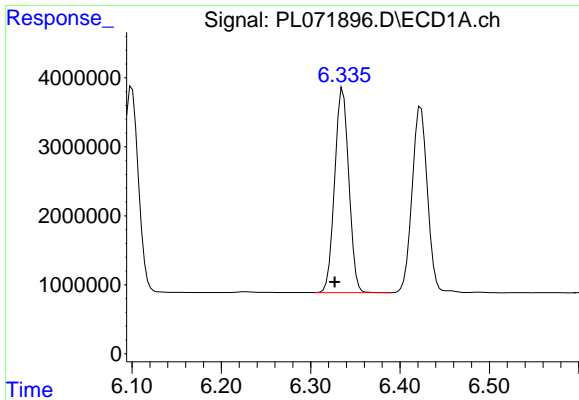
#5 Aldrin
 R.T.: 7.489 min
 Delta R.T.: 0.005 min
 Response: 83561213
 Conc: 54.24 ng/ml



#6 beta-BHC
 R.T.: 6.078 min
 Delta R.T.: 0.009 min
 Response: 14383510
 Conc: 53.16 ng/ml



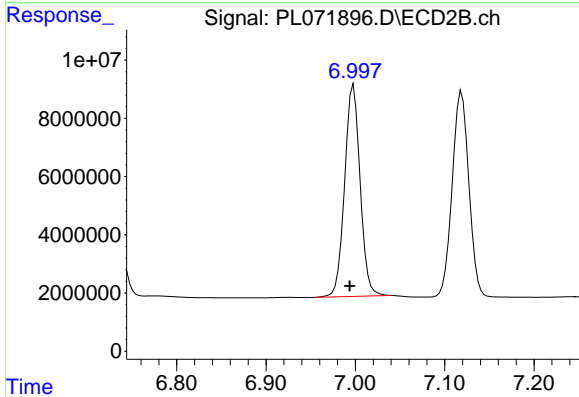
#6 beta-BHC
 R.T.: 6.732 min
 Delta R.T.: 0.004 min
 Response: 41687456
 Conc: 58.34 ng/ml



#7 delta-BHC

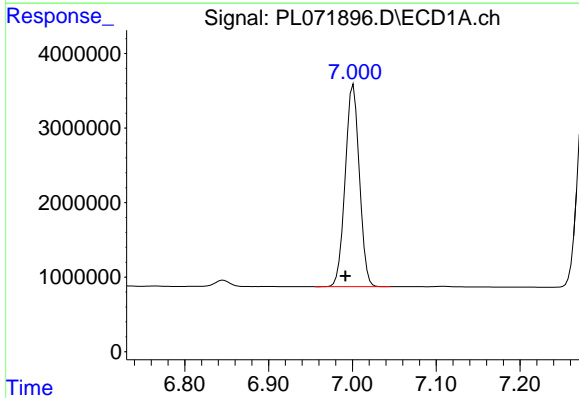
R.T.: 6.336 min
 Delta R.T.: 0.009 min
 Response: 32589247
 Conc: 52.11 ng/ml

Instrument :
 ECD_L
 ClientSampleId :



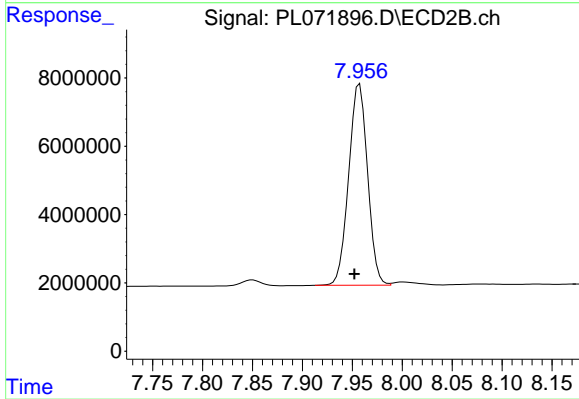
#7 delta-BHC

R.T.: 6.998 min
 Delta R.T.: 0.004 min
 Response: 87681953
 Conc: 57.12 ng/ml



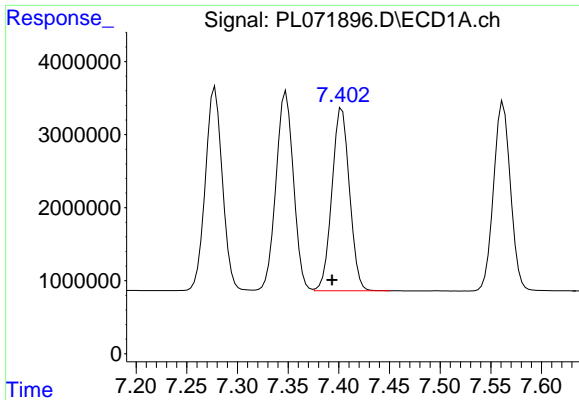
#8 Heptachlor epoxide

R.T.: 7.001 min
 Delta R.T.: 0.010 min
 Response: 31913287
 Conc: 52.32 ng/ml



#8 Heptachlor epoxide

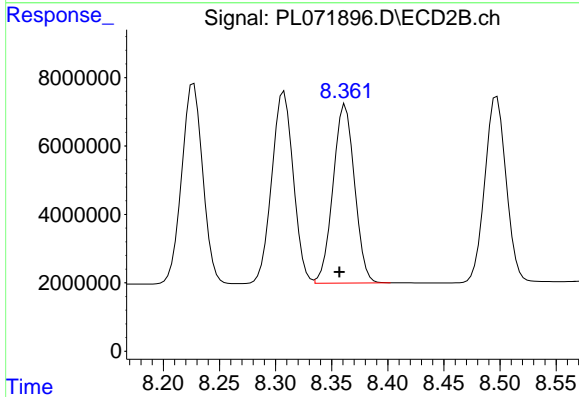
R.T.: 7.957 min
 Delta R.T.: 0.005 min
 Response: 77679275
 Conc: 55.59 ng/ml



#9 Endosulfan I

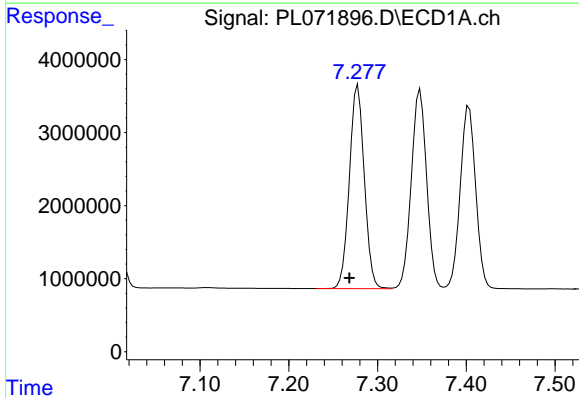
R.T.: 7.403 min
 Delta R.T.: 0.010 min
 Response: 30224186
 Conc: 53.37 ng/ml

Instrument :
 ECD_L
 ClientSampleId :



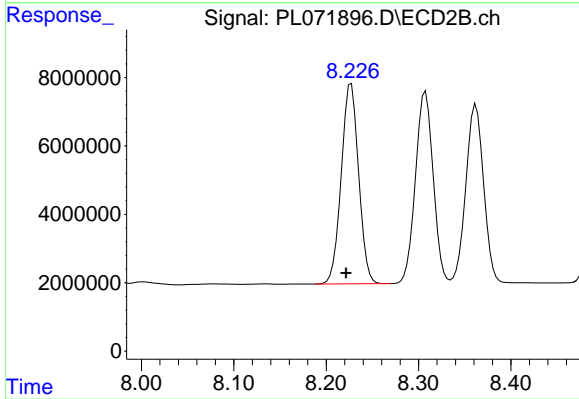
#9 Endosulfan I

R.T.: 8.362 min
 Delta R.T.: 0.005 min
 Response: 69690127
 Conc: 56.27 ng/ml



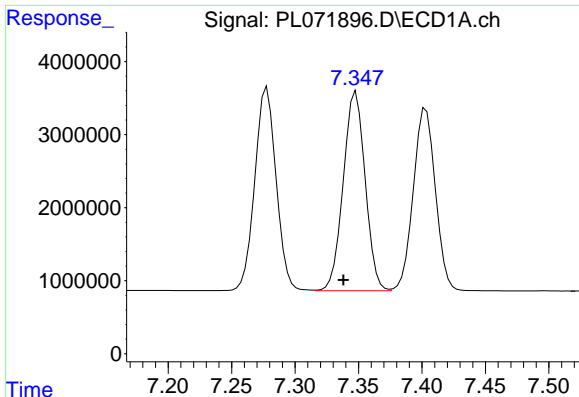
#10 gamma-Chlordane

R.T.: 7.278 min
 Delta R.T.: 0.009 min
 Response: 32543652
 Conc: 52.49 ng/ml



#10 gamma-Chlordane

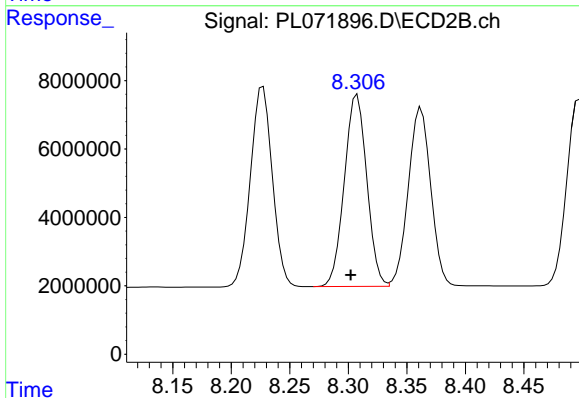
R.T.: 8.227 min
 Delta R.T.: 0.005 min
 Response: 76482638
 Conc: 55.93 ng/ml



#11 alpha-Chlordane

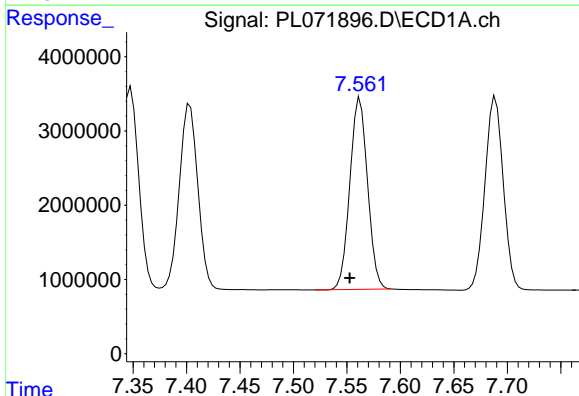
R.T.: 7.348 min
Delta R.T.: 0.010 min
Response: 32696115
Conc: 52.80 ng/ml

Instrument :
ECD_L
ClientSampleId :



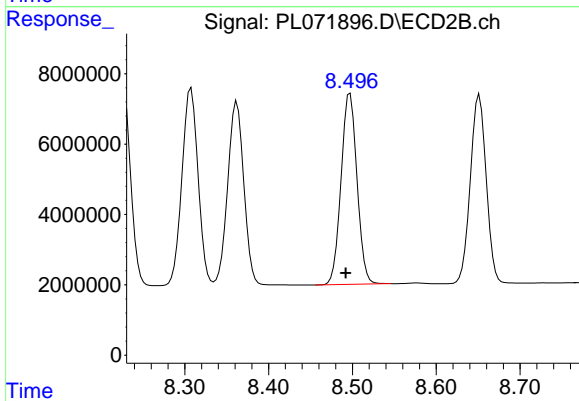
#11 alpha-Chlordane

R.T.: 8.308 min
Delta R.T.: 0.005 min
Response: 74877029
Conc: 56.26 ng/ml



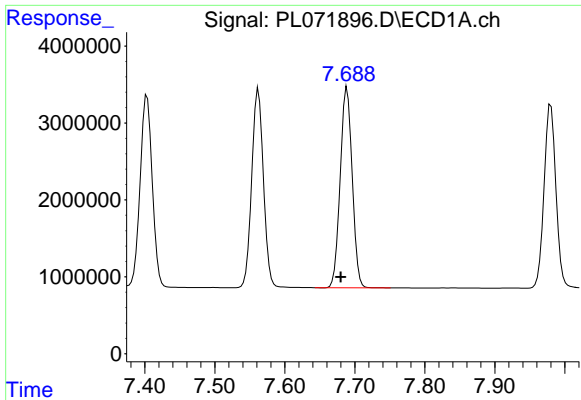
#12 4,4'-DDE

R.T.: 7.562 min
Delta R.T.: 0.010 min
Response: 29709417
Conc: 53.58 ng/ml



#12 4,4'-DDE

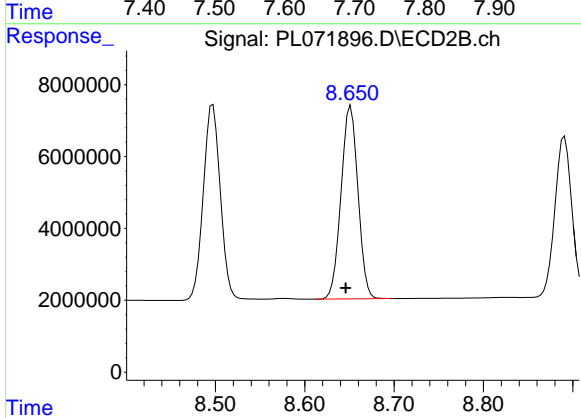
R.T.: 8.497 min
Delta R.T.: 0.005 min
Response: 71838140
Conc: 57.07 ng/ml



#13 Dieldrin

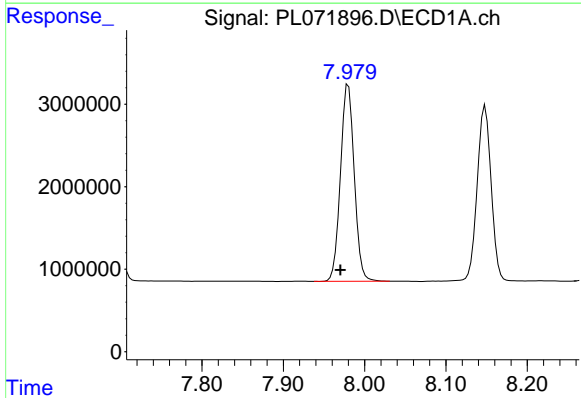
R.T.: 7.689 min
 Delta R.T.: 0.009 min
 Response: 30999721
 Conc: 51.40 ng/ml

Instrument :
 ECD_L
 ClientSampleId :



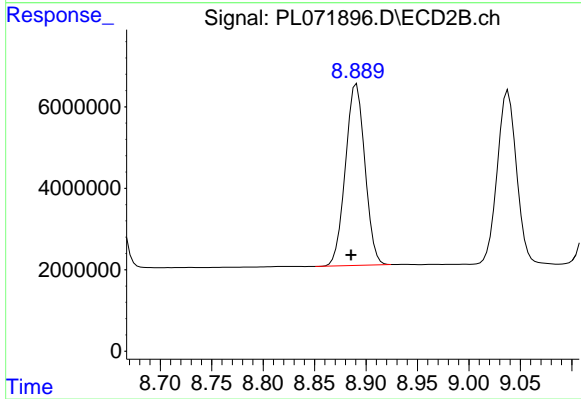
#13 Dieldrin

R.T.: 8.652 min
 Delta R.T.: 0.006 min
 Response: 70673312
 Conc: 53.87 ng/ml



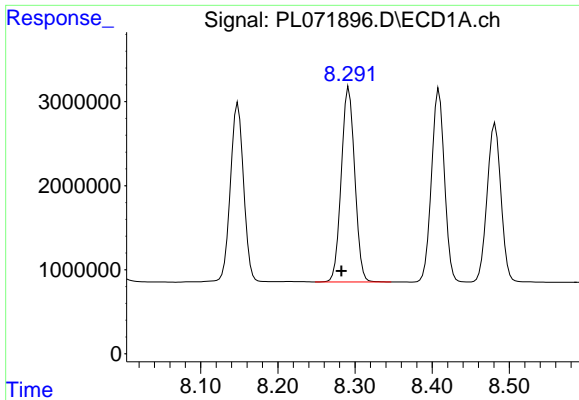
#14 Endrin

R.T.: 7.980 min
 Delta R.T.: 0.010 min
 Response: 28083436
 Conc: 53.14 ng/ml



#14 Endrin

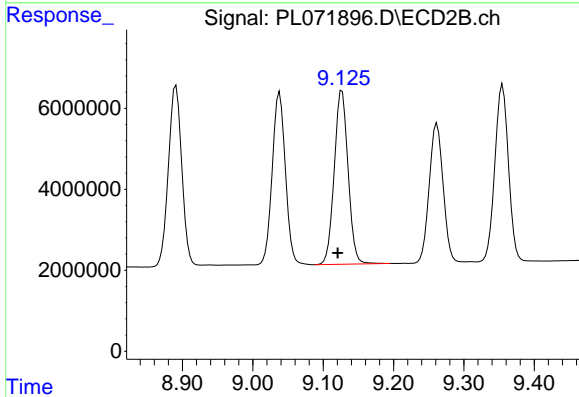
R.T.: 8.891 min
 Delta R.T.: 0.005 min
 Response: 58766674
 Conc: 56.78 ng/ml



#15 Endosulfan II

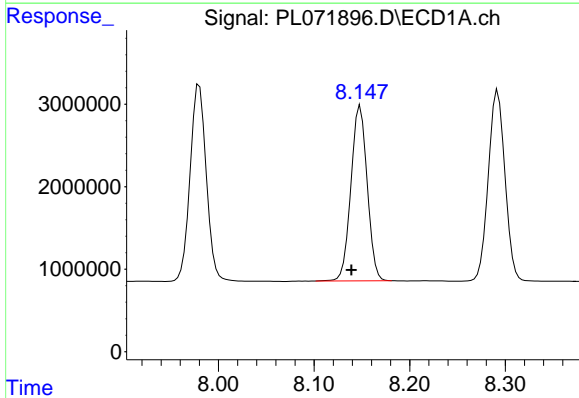
R.T.: 8.292 min
 Delta R.T.: 0.009 min
 Response: 28011313
 Conc: 48.46 ng/ml

Instrument :
 ECD_L
 ClientSampleId :



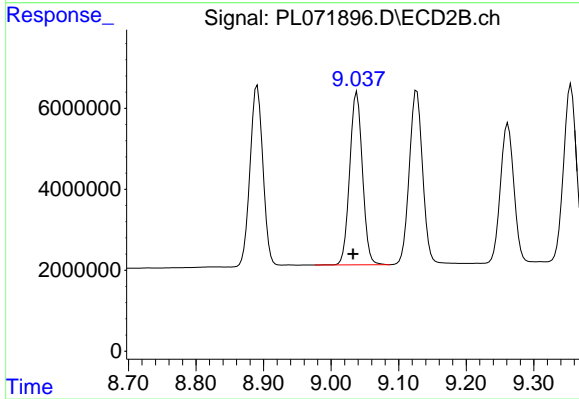
#15 Endosulfan II

R.T.: 9.127 min
 Delta R.T.: 0.006 min
 Response: 58657618
 Conc: 52.23 ng/ml



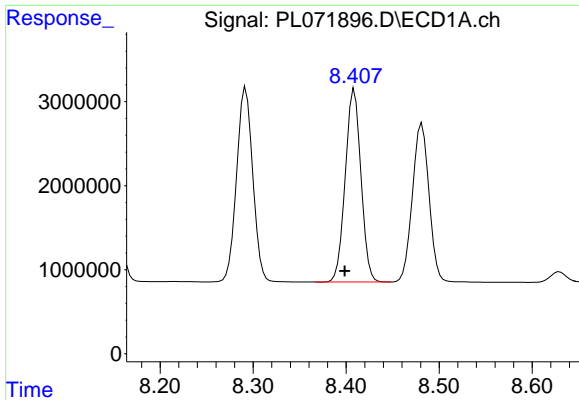
#16 4,4'-DDD

R.T.: 8.148 min
 Delta R.T.: 0.009 min
 Response: 25180321
 Conc: 52.29 ng/ml



#16 4,4'-DDD

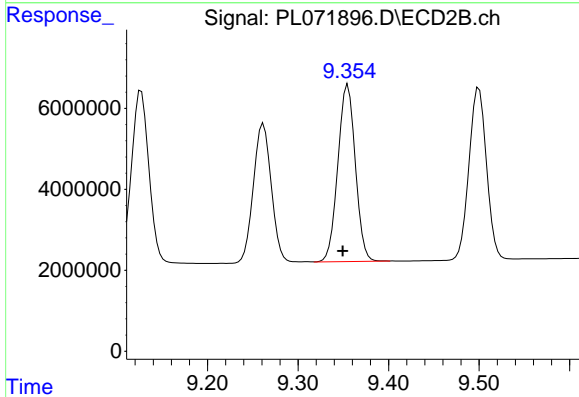
R.T.: 9.038 min
 Delta R.T.: 0.006 min
 Response: 55759859
 Conc: 58.00 ng/ml



#17 4,4'-DDT

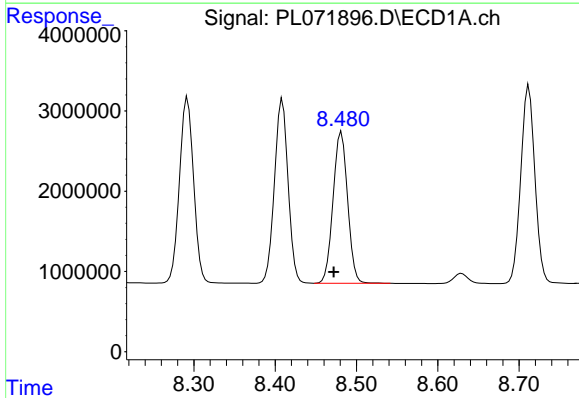
R.T.: 8.409 min
 Delta R.T.: 0.010 min
 Response: 26872334
 Conc: 56.31 ng/ml

Instrument :
 ECD_L
 ClientSampleId :



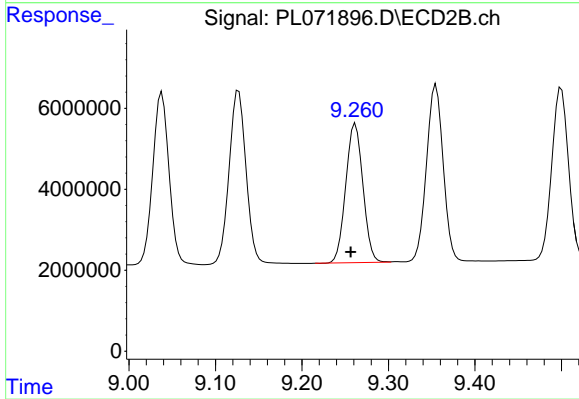
#17 4,4'-DDT

R.T.: 9.355 min
 Delta R.T.: 0.006 min
 Response: 58692719
 Conc: 62.24 ng/ml



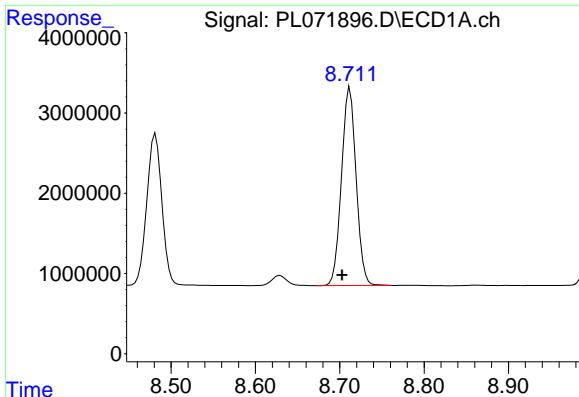
#18 Endrin aldehyde

R.T.: 8.482 min
 Delta R.T.: 0.010 min
 Response: 23457460
 Conc: 51.69 ng/ml



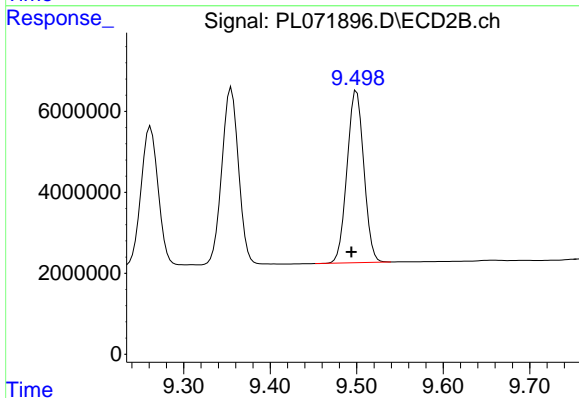
#18 Endrin aldehyde

R.T.: 9.262 min
 Delta R.T.: 0.005 min
 Response: 47303690
 Conc: 55.74 ng/ml

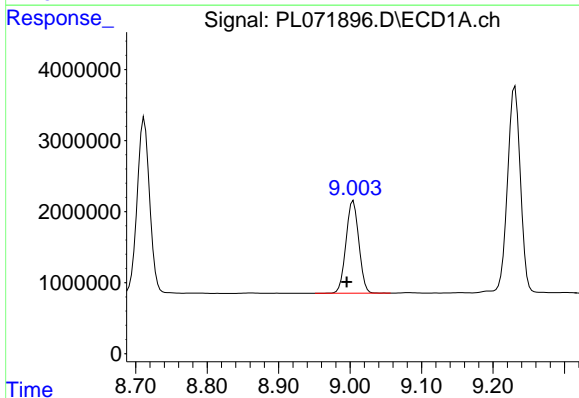


#19 Endosulfan Sulfate
 R.T.: 8.712 min
 Delta R.T.: 0.009 min
 Response: 29762850
 Conc: 50.90 ng/ml

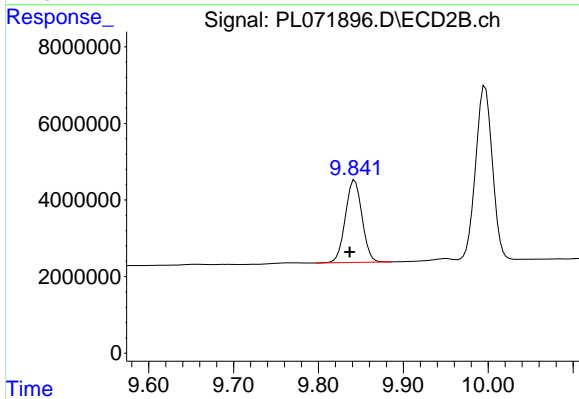
Instrument :
 ECD_L
 ClientSampleId :



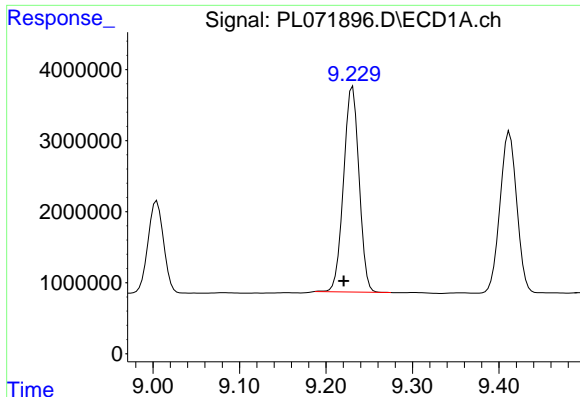
#19 Endosulfan Sulfate
 R.T.: 9.500 min
 Delta R.T.: 0.006 min
 Response: 57157998
 Conc: 55.02 ng/ml



#20 Methoxychlor
 R.T.: 9.005 min
 Delta R.T.: 0.009 min
 Response: 16305490
 Conc: 52.68 ng/ml



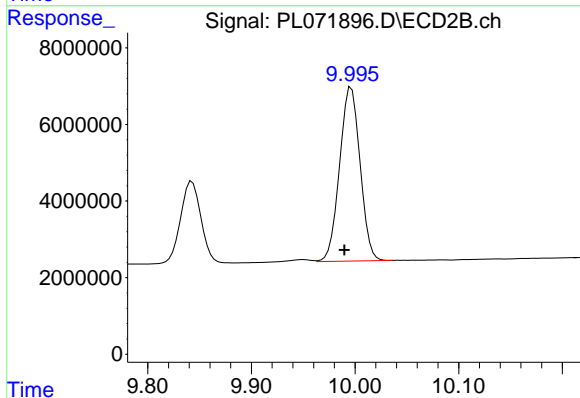
#20 Methoxychlor
 R.T.: 9.843 min
 Delta R.T.: 0.006 min
 Response: 29293080
 Conc: 59.49 ng/ml



#21 Endrin ketone

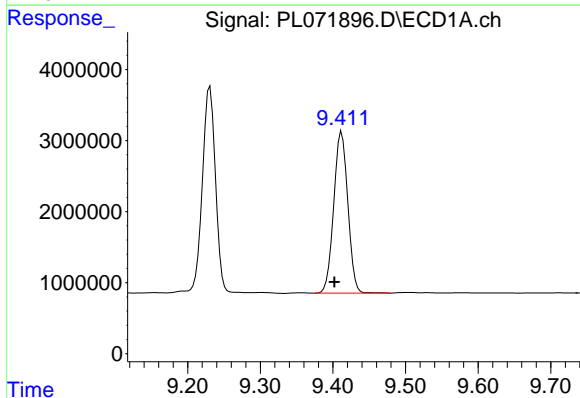
R.T.: 9.231 min
 Delta R.T.: 0.010 min
 Response: 35746958
 Conc: 51.58 ng/ml

Instrument :
 ECD_L
 ClientSampleId :



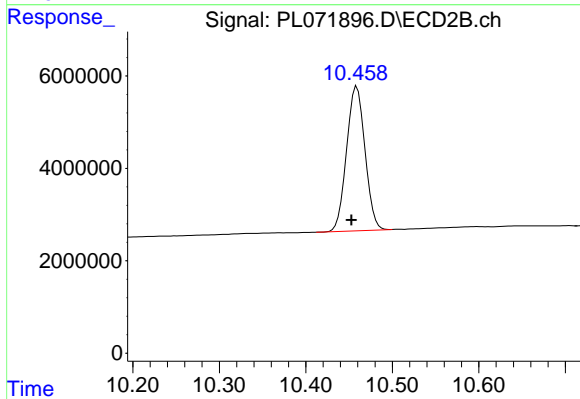
#21 Endrin ketone

R.T.: 9.996 min
 Delta R.T.: 0.007 min
 Response: 62374429
 Conc: 55.27 ng/ml



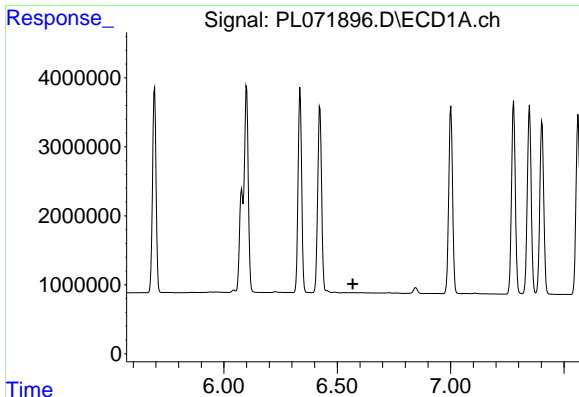
#22 Mirex

R.T.: 9.412 min
 Delta R.T.: 0.010 min
 Response: 30607806
 Conc: 51.02 ng/ml



#22 Mirex

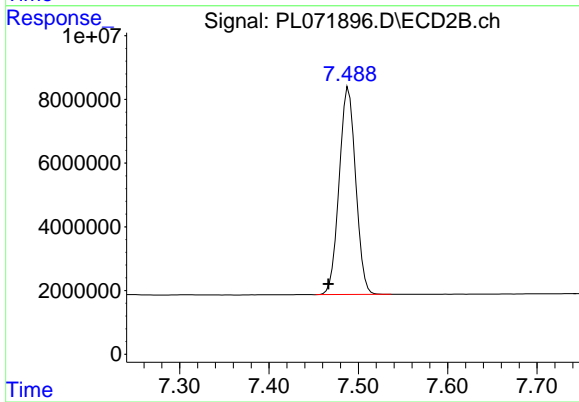
R.T.: 10.459 min
 Delta R.T.: 0.006 min
 Response: 46176725
 Conc: 53.75 ng/ml



#24 Chlordane-2

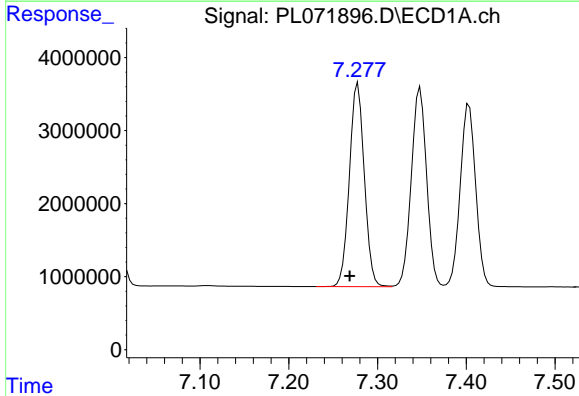
R.T.: 0.000 min
 Exp R.T.: 6.569 min
 Response: 0
 Conc: N.D.

Instrument :
 ECD_L
 ClientSampleId :



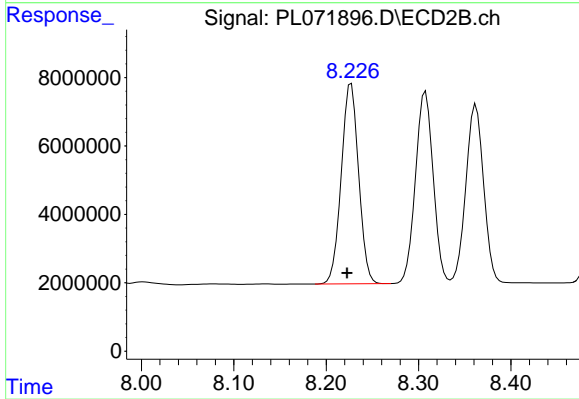
#24 Chlordane-2

R.T.: 7.489 min
 Delta R.T.: 0.023 min
 Response: 83561213
 Conc: 1543.77 ng/ml



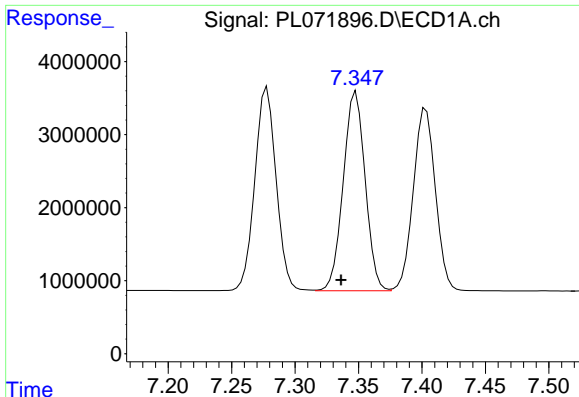
#25 Chlordane-3

R.T.: 7.278 min
 Delta R.T.: 0.009 min
 Response: 32543652
 Conc: 500.83 ng/ml



#25 Chlordane-3

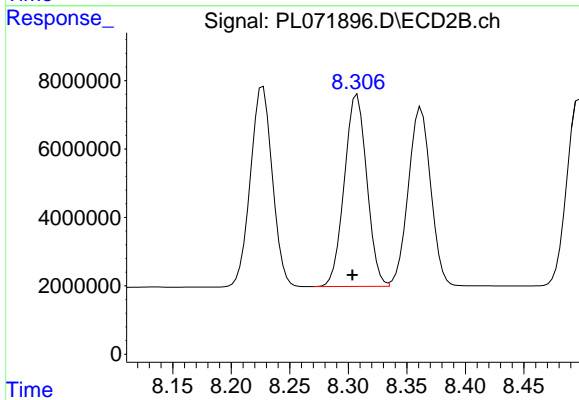
R.T.: 8.227 min
 Delta R.T.: 0.005 min
 Response: 76482638
 Conc: 374.71 ng/ml



#26 Chlordane-4

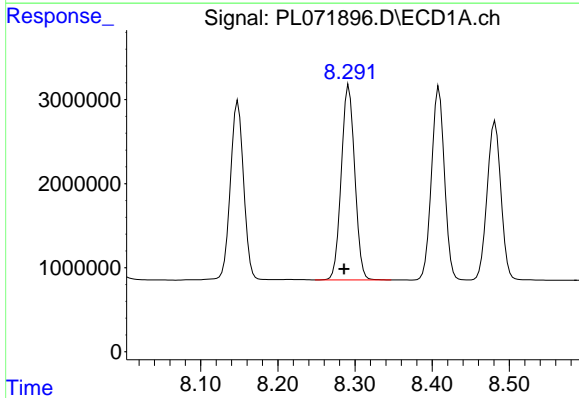
R.T.: 7.348 min
 Delta R.T.: 0.012 min
 Response: 32696115
 Conc: 465.56 ng/ml

Instrument :
 ECD_L
 ClientSampleId :



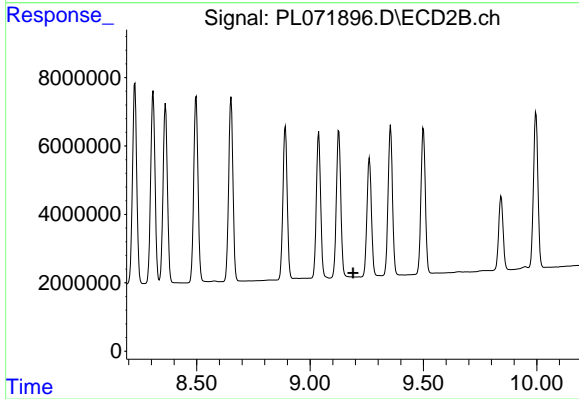
#26 Chlordane-4

R.T.: 8.308 min
 Delta R.T.: 0.004 min
 Response: 74877029
 Conc: 307.60 ng/ml



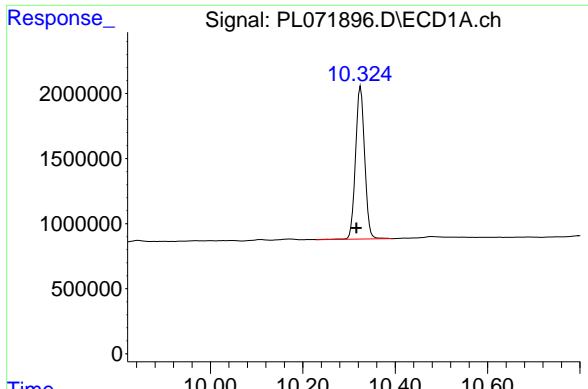
#27 Chlordane-5

R.T.: 8.292 min
 Delta R.T.: 0.006 min
 Response: 28011313
 Conc: 1173.31 ng/ml



#27 Chlordane-5

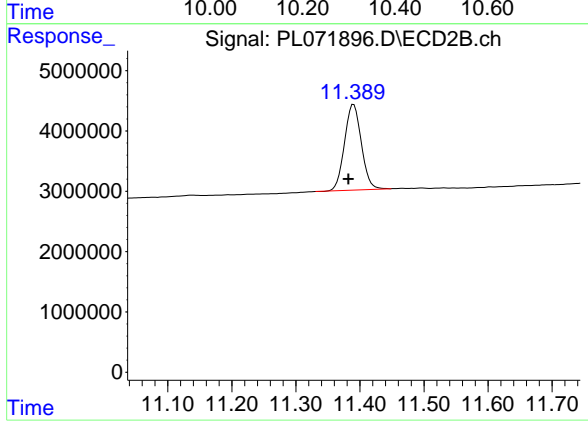
R.T.: 0.000 min
 Exp R.T. : 9.190 min
 Response: 0
 Conc: N.D.



#28 Decachlorobiphenyl

R.T.: 10.325 min
Delta R.T.: 0.009 min
Response: 16169433
Conc: 22.36 ng/ml

Instrument :
ECD_L
ClientSampleId :



#28 Decachlorobiphenyl

R.T.: 11.390 min
Delta R.T.: 0.008 min
Response: 26005787
Conc: 21.95 ng/ml