

Data Path : Z:\pestpcbsrv\HPCHEM1\ECD\_L\Data\PL011022\  
 Data File : PL071925.D  
 Signal(s) : Signal #1: ECD1A.ch Signal #2: ECD2B.ch  
 Acq On : 10 Jan 2022 20:53  
 Operator : AR\AJ  
 Sample : N1054-18  
 Misc :  
 ALS Vial : 30 Sample Multiplier: 1

Instrument :  
 ECD\_L  
 ClientSampleId :

Integration File signal 1: autoint1.e  
 Integration File signal 2: autoint2.e  
 Quant Time: Jan 11 01:39:51 2022  
 Quant Method : Z:\pestpcbsrv\HPCHEM1\ECD\_L\methods\PL010422.M  
 Quant Title : GC Extractables  
 QLast Update : Thu Jan 06 10:33:37 2022  
 Response via : Initial Calibration  
 Integrator: ChemStation

Volume Inj. : 1 µl  
 Signal #1 Phase : ZB-MR1 Signal #2 Phase: ZB-MR1  
 Signal #1 Info : 30M x 0.32mm x0.2 Signal #2 Info : 30M x 0.32mm x0.5µm

Compound	RT#1	RT#2	Resp#1	Resp#2	ng/ml	ng/ml
System Monitoring Compounds						
1) SA Tetrachlo...	4.558	5.494	8324290	21839619	18.020	17.775
28) SA Decachlor...	10.320	11.389	6951487	11630314	9.614	9.814
Target Compounds						
2) A alpha-BHC	5.258	6.053f	296371	877066	0.480	0.503
4) MA Heptachlor	0.000	7.138f	0	16822	N.D.	0.010 #
6) B beta-BHC	0.000	6.720	0	112444	N.D.	0.157 #
7) B delta-BHC	0.000	6.974f	0	2966284	N.D.	1.932 #
9) A Endosulfan I	0.000	8.347	0	91178	N.D.	0.074 #
10) B gamma-Chl...	0.000	8.229	0	354746	N.D.	0.259 #
11) B alpha-Chl...	0.000	8.298	0	233981	N.D.	0.176 #
15) B Endosulfa...	0.000	9.115	0	737989	N.D.	0.657 #
16) A 4,4'-DDD	0.000	9.033	0	1031234	N.D.	1.073 #
17) MA 4,4'-DDT	0.000	9.348	0	91048	N.D.	0.097 #
18) B Endrin al...	0.000	9.263	0	447481	N.D.	0.527 #
19) B Endosulfa...	0.000	9.500	0	182212	N.D.	0.175 #
21) B Endrin ke...	0.000	9.993	0	35846	N.D.	0.032 #
24) Chlordane-2	0.000	7.452	0	85225	N.D.	1.575 #
25) Chlordane-3	0.000	8.229	0	354746	N.D.	1.738 #
26) Chlordane-4	0.000	8.298	0	233981	N.D.	0.961 #

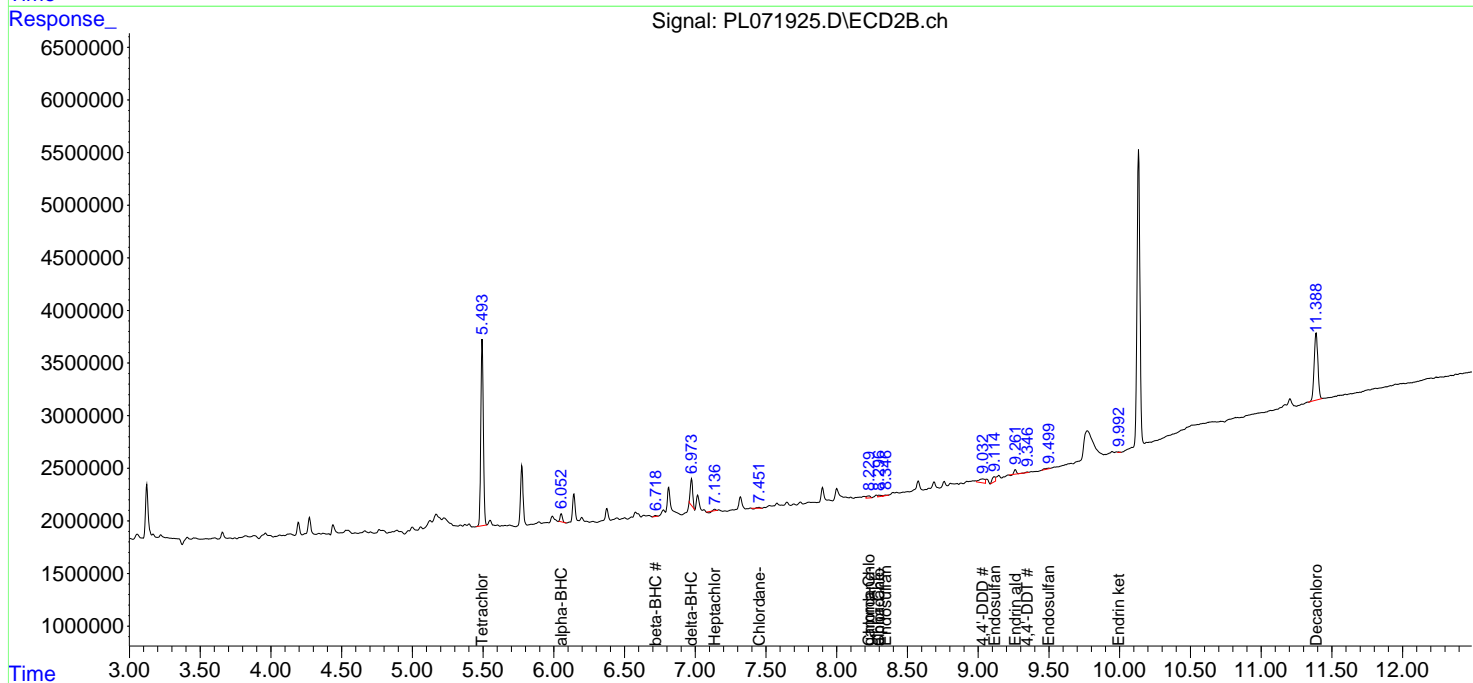
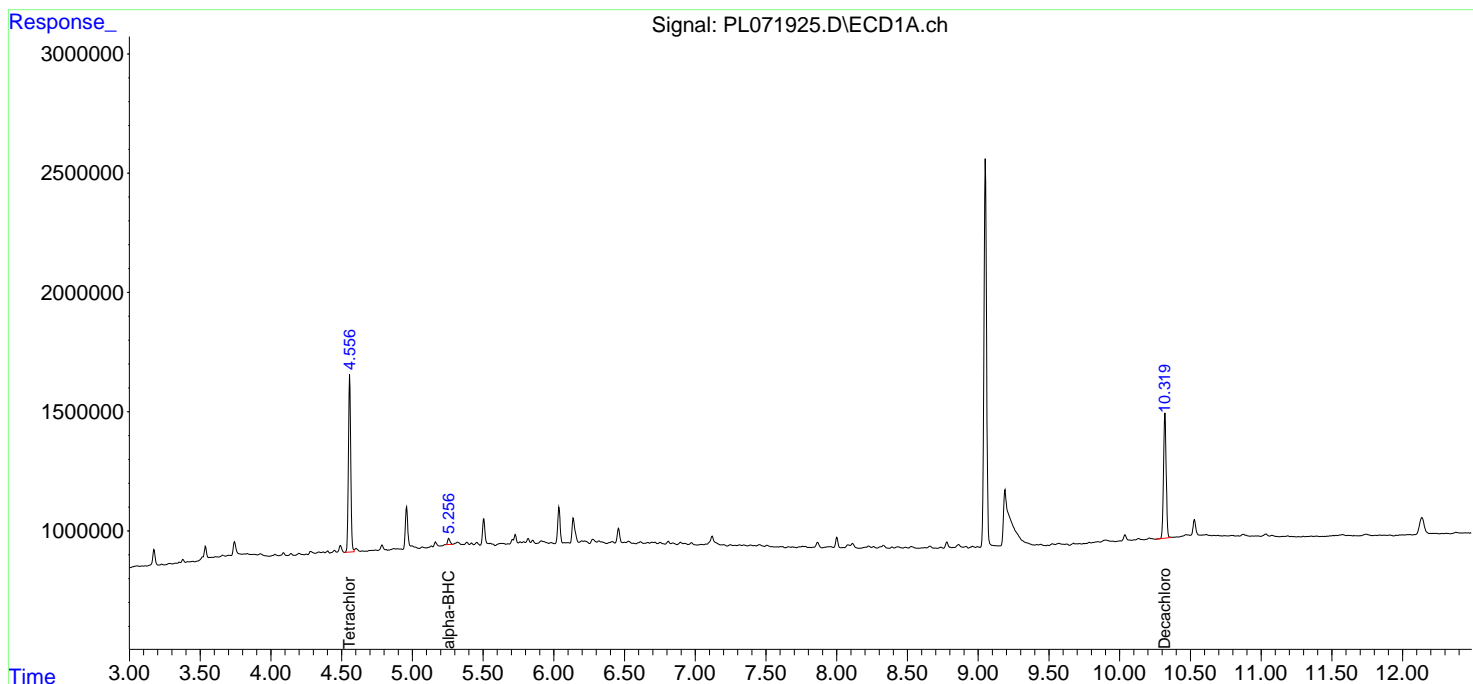
(f)=RT Delta > 1/2 Window (#)=Amounts differ by > 25% (m)=manual int.

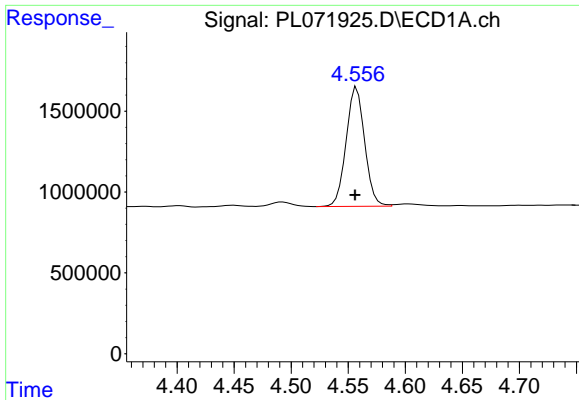
Data Path : Z:\pestpcbsrv\HPCHEM1\ECD\_L\Data\PL011022\  
 Data File : PL071925.D  
 Signal(s) : Signal #1: ECD1A.ch Signal #2: ECD2B.ch  
 Acq On : 10 Jan 2022 20:53  
 Operator : AR\AJ  
 Sample : N1054-18  
 Misc :  
 ALS Vial : 30 Sample Multiplier: 1

Instrument :  
 ECD\_L  
 ClientSampleId :

Integration File signal 1: autoint1.e  
 Integration File signal 2: autoint2.e  
 Quant Time: Jan 11 01:39:51 2022  
 Quant Method : Z:\pestpcbsrv\HPCHEM1\ECD\_L\methods\PL010422.M  
 Quant Title : GC Extractables  
 QLast Update : Thu Jan 06 10:33:37 2022  
 Response via : Initial Calibration  
 Integrator: ChemStation

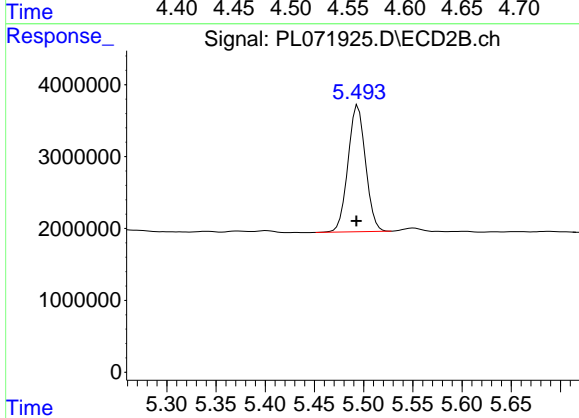
Volume Inj. : 1 µl  
 Signal #1 Phase : ZB-MR2 Signal #2 Phase: ZB-MR1  
 Signal #1 Info : 30M x 0.32mm x0.2 Signal #2 Info : 30M x 0.32mm x0.5µm



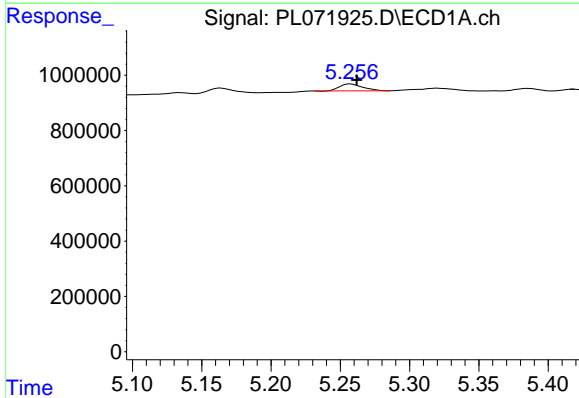


#1 Tetrachloro-m-xylene  
 R.T.: 4.558 min  
 Delta R.T.: 0.002 min  
 Response: 8324290  
 Conc: 18.02 ng/ml

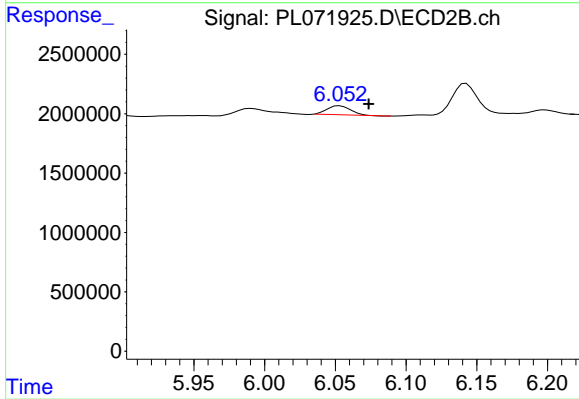
Instrument :  
 ECD\_L  
 ClientSampleId :



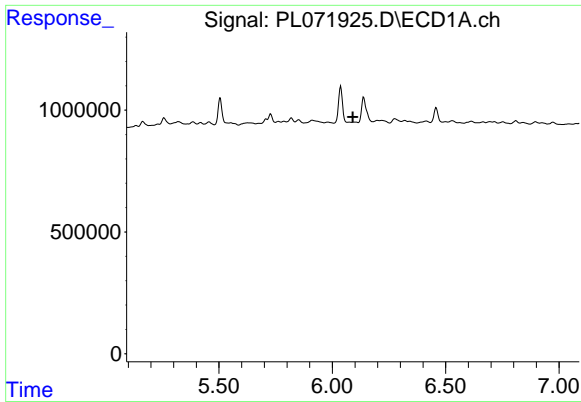
#1 Tetrachloro-m-xylene  
 R.T.: 5.494 min  
 Delta R.T.: 0.002 min  
 Response: 21839619  
 Conc: 17.78 ng/ml



#2 alpha-BHC  
 R.T.: 5.258 min  
 Delta R.T.: -0.004 min  
 Response: 296371  
 Conc: 0.48 ng/ml



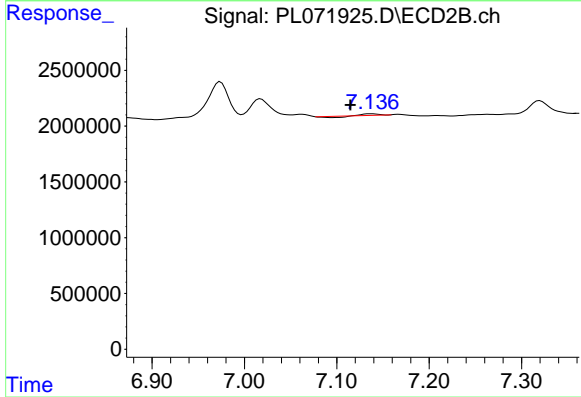
#2 alpha-BHC  
 R.T.: 6.053 min  
 Delta R.T.: -0.020 min  
 Response: 877066  
 Conc: 0.50 ng/ml



#4 Heptachlor

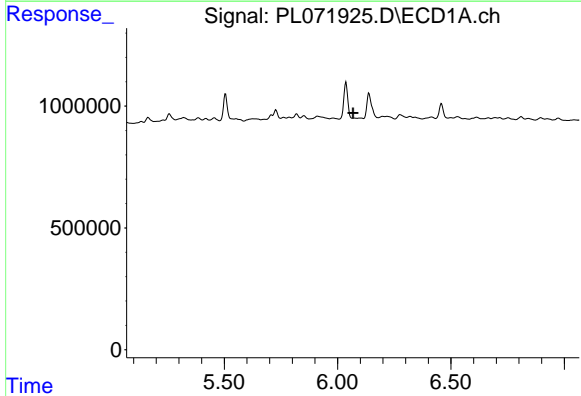
R.T.: 0.000 min  
 Exp R.T.: 6.091 min  
 Response: 0  
 Conc: N.D.

Instrument :  
 ECD\_L  
 ClientSampleId :



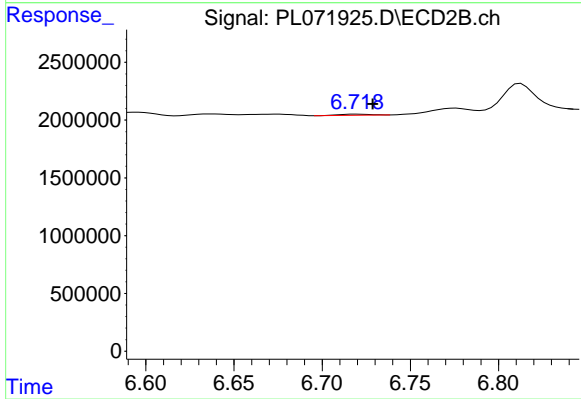
#4 Heptachlor

R.T.: 7.138 min  
 Delta R.T.: 0.023 min  
 Response: 16822  
 Conc: 0.01 ng/ml



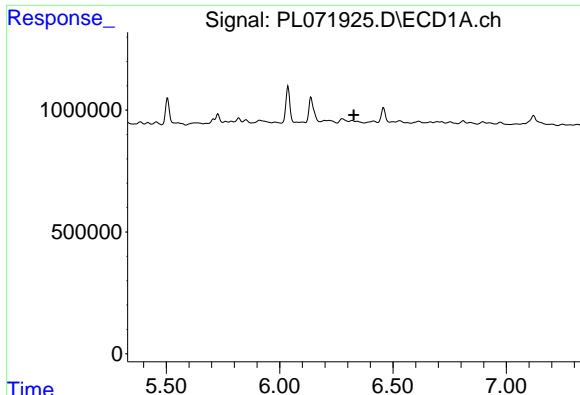
#6 beta-BHC

R.T.: 0.000 min  
 Exp R.T.: 6.069 min  
 Response: 0  
 Conc: N.D.



#6 beta-BHC

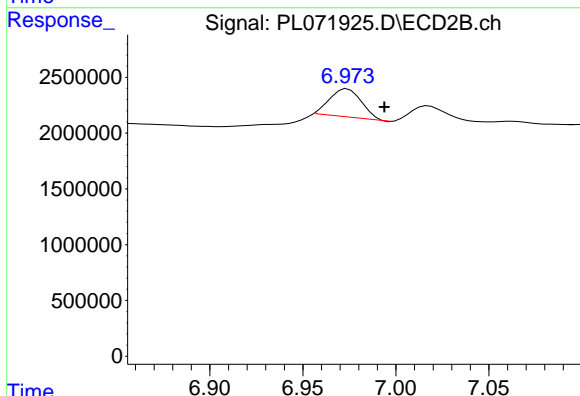
R.T.: 6.720 min  
 Delta R.T.: -0.009 min  
 Response: 112444  
 Conc: 0.16 ng/ml



#7 delta-BHC

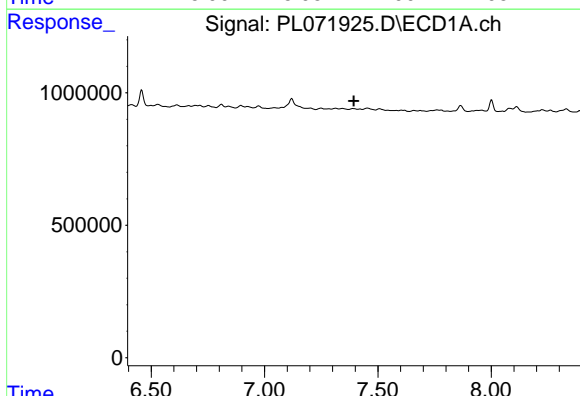
R.T.: 0.000 min  
 Exp R.T.: 6.327 min  
 Response: 0  
 Conc: N.D.

Instrument :  
 ECD\_L  
 ClientSampleId :



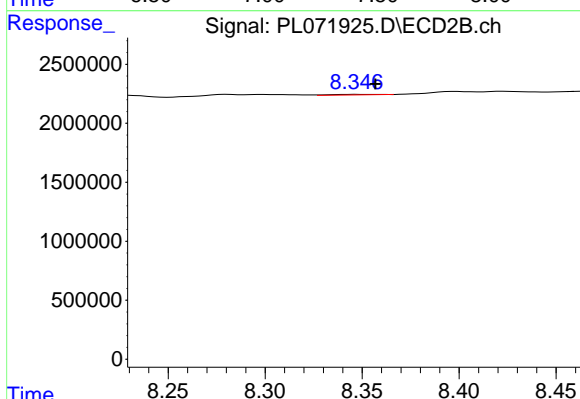
#7 delta-BHC

R.T.: 6.974 min  
 Delta R.T.: -0.020 min  
 Response: 2966284  
 Conc: 1.93 ng/ml



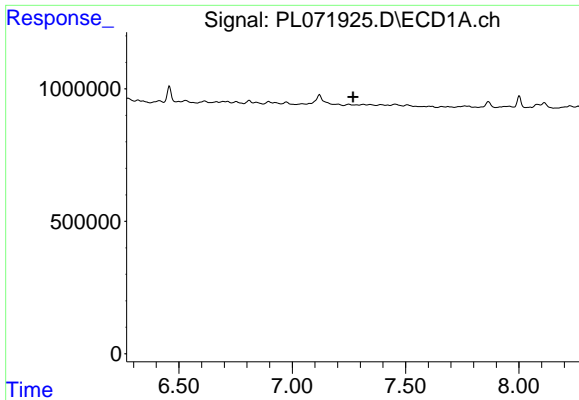
#9 Endosulfan I

R.T.: 0.000 min  
 Exp R.T.: 7.393 min  
 Response: 0  
 Conc: N.D.



#9 Endosulfan I

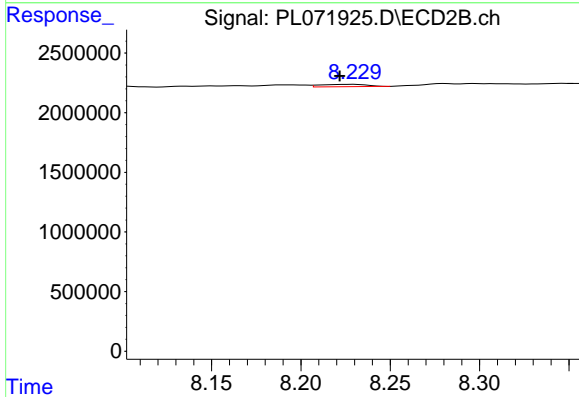
R.T.: 8.347 min  
 Delta R.T.: -0.010 min  
 Response: 91178  
 Conc: 0.07 ng/ml



#10 gamma-Chlordane

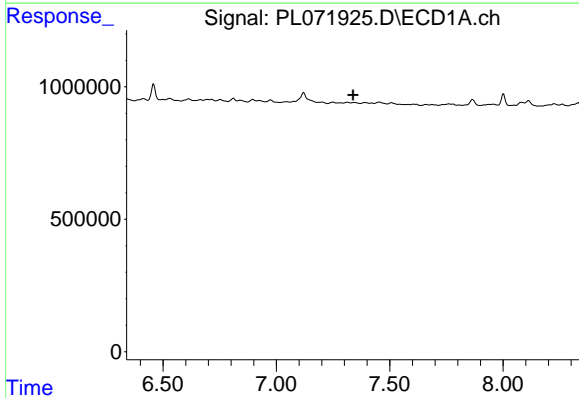
R.T.: 0.000 min  
 Exp R.T.: 7.268 min  
 Response: 0  
 Conc: N.D.

Instrument :  
 ECD\_L  
 ClientSampleId :



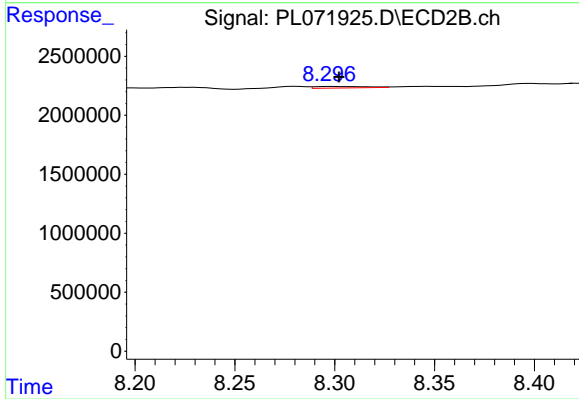
#10 gamma-Chlordane

R.T.: 8.229 min  
 Delta R.T.: 0.008 min  
 Response: 354746  
 Conc: 0.26 ng/ml



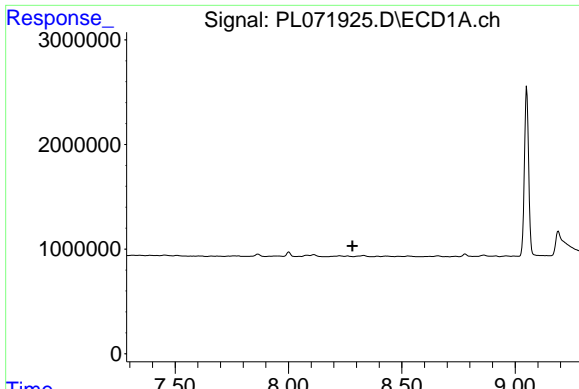
#11 alpha-Chlordane

R.T.: 0.000 min  
 Exp R.T.: 7.338 min  
 Response: 0  
 Conc: N.D.



#11 alpha-Chlordane

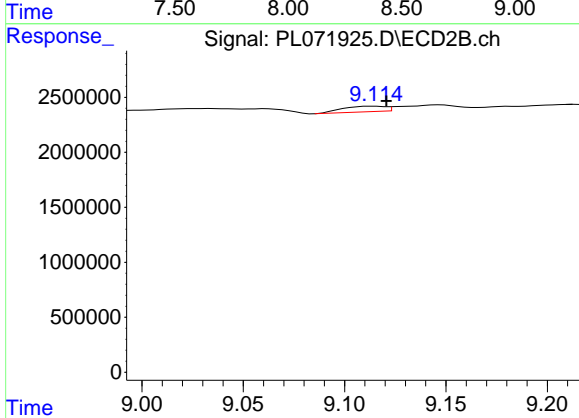
R.T.: 8.298 min  
 Delta R.T.: -0.004 min  
 Response: 233981  
 Conc: 0.18 ng/ml



#15 Endosulfan II

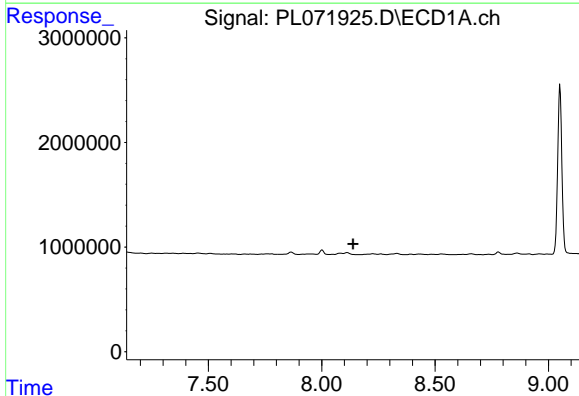
R.T.: 0.000 min  
 Exp R.T. : 8.283 min  
 Response: 0  
 Conc: N.D.

Instrument :  
 ECD\_L  
 ClientSampleId :



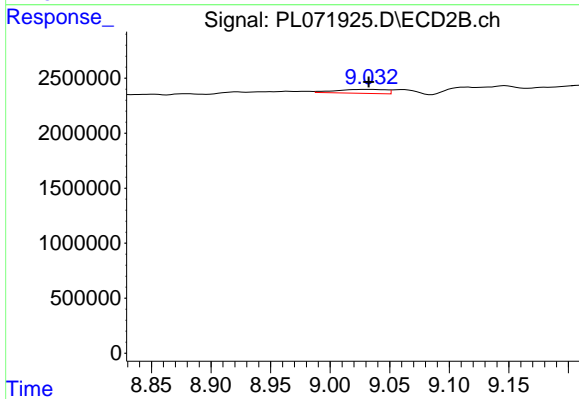
#15 Endosulfan II

R.T.: 9.115 min  
 Delta R.T.: -0.006 min  
 Response: 737989  
 Conc: 0.66 ng/ml



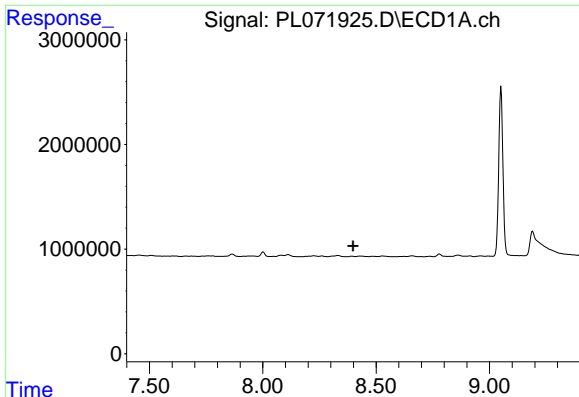
#16 4,4'-DDD

R.T.: 0.000 min  
 Exp R.T. : 8.139 min  
 Response: 0  
 Conc: N.D.



#16 4,4'-DDD

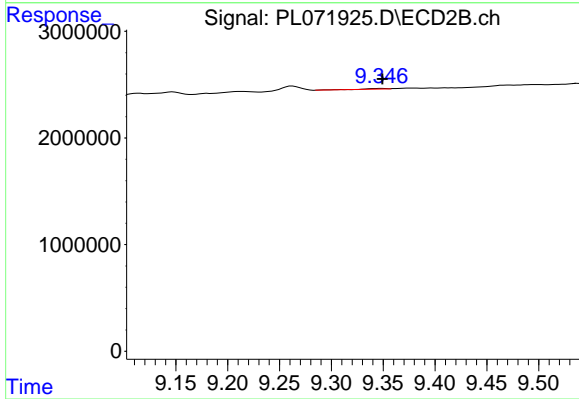
R.T.: 9.033 min  
 Delta R.T.: 0.000 min  
 Response: 1031234  
 Conc: 1.07 ng/ml



#17 4,4'-DDT

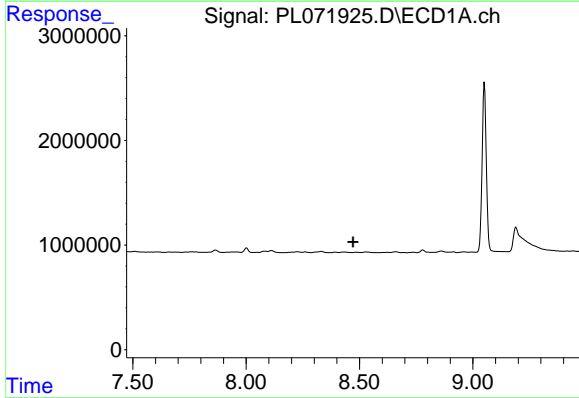
R.T.: 0.000 min  
 Exp R.T. : 8.398 min  
 Response: 0  
 Conc: N.D.

Instrument :  
 ECD\_L  
 ClientSampleId :



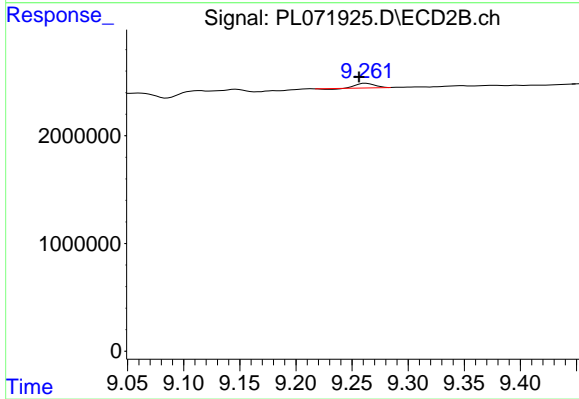
#17 4,4'-DDT

R.T.: 9.348 min  
 Delta R.T.: -0.001 min  
 Response: 91048  
 Conc: 0.10 ng/ml



#18 Endrin aldehyde

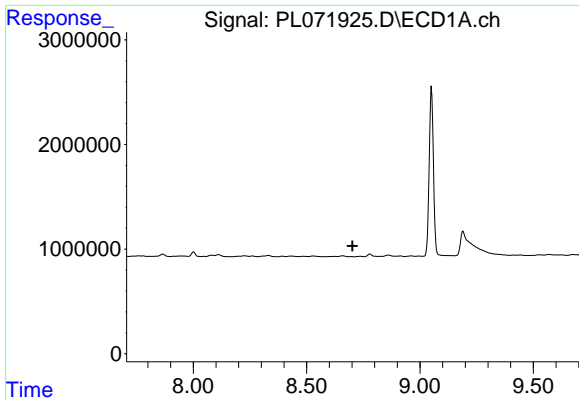
R.T.: 0.000 min  
 Exp R.T. : 8.472 min  
 Response: 0  
 Conc: N.D.



#18 Endrin aldehyde

R.T.: 9.263 min  
 Delta R.T.: 0.006 min  
 Response: 447481  
 Conc: 0.53 ng/ml

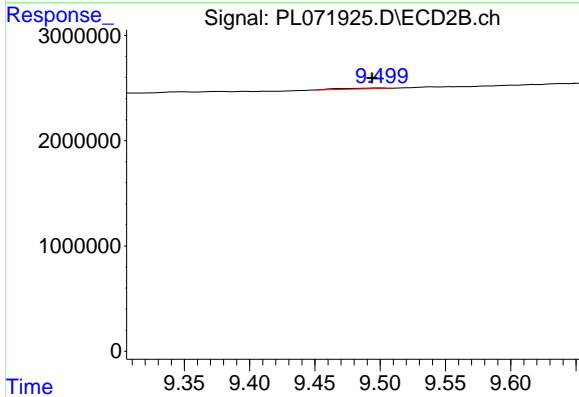




#19 Endosulfan Sulfate

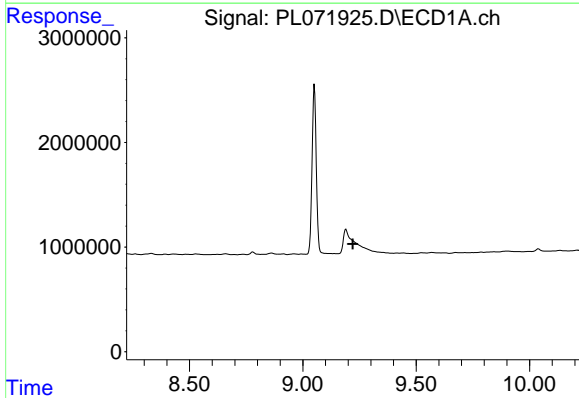
R.T.: 0.000 min  
 Exp R.T. : 8.703 min  
 Response: 0  
 Conc: N.D.

Instrument :  
 ECD\_L  
 ClientSampleId :



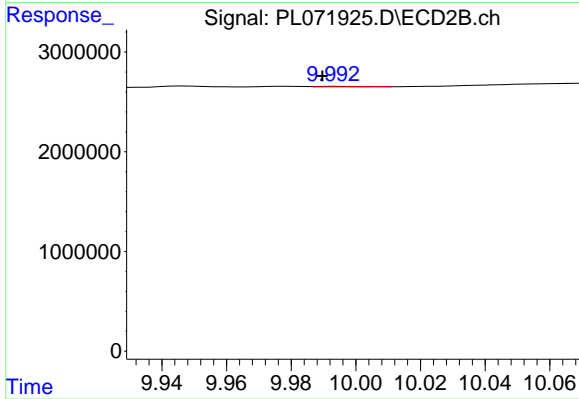
#19 Endosulfan Sulfate

R.T.: 9.500 min  
 Delta R.T.: 0.006 min  
 Response: 182212  
 Conc: 0.18 ng/ml



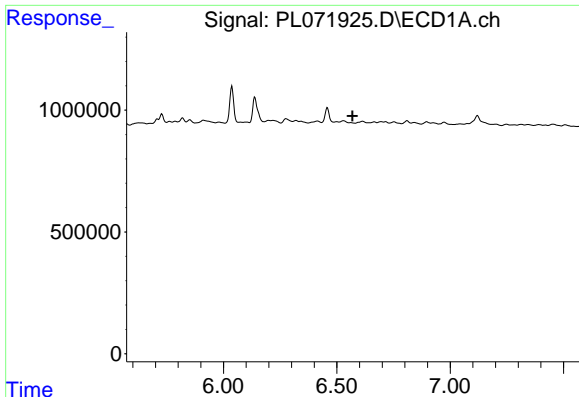
#21 Endrin ketone

R.T.: 0.000 min  
 Exp R.T. : 9.220 min  
 Response: 0  
 Conc: N.D.



#21 Endrin ketone

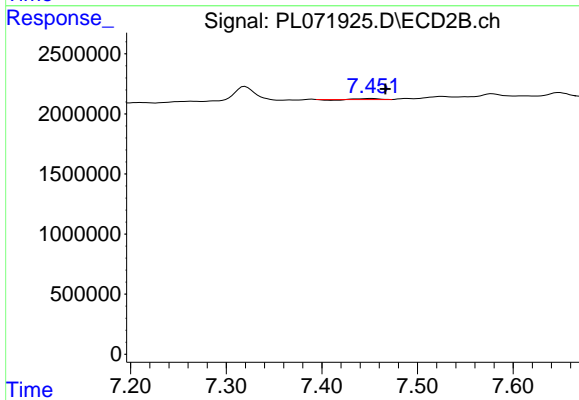
R.T.: 9.993 min  
 Delta R.T.: 0.004 min  
 Response: 35846  
 Conc: 0.03 ng/ml



#24 Chlordane-2

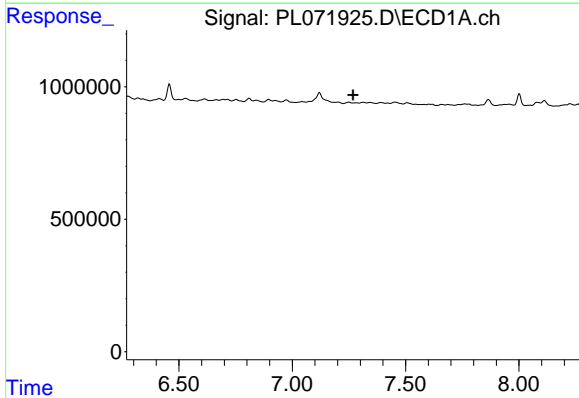
R.T.: 0.000 min  
 Exp R.T. : 6.569 min  
 Response: 0  
 Conc: N.D.

Instrument :  
 ECD\_L  
 ClientSampleId :



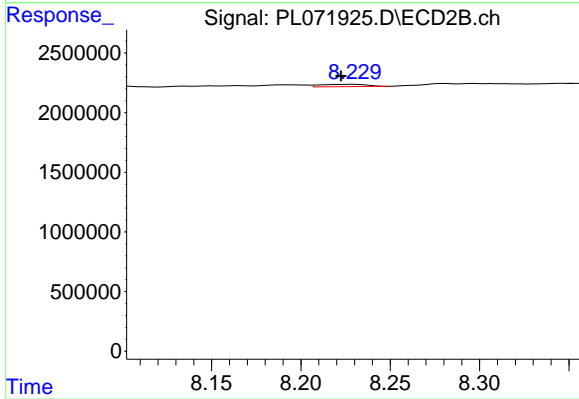
#24 Chlordane-2

R.T.: 7.452 min  
 Delta R.T.: -0.014 min  
 Response: 85225  
 Conc: 1.57 ng/ml



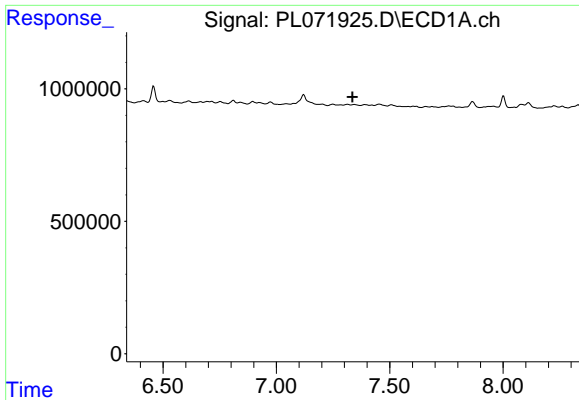
#25 Chlordane-3

R.T.: 0.000 min  
 Exp R.T. : 7.269 min  
 Response: 0  
 Conc: N.D.



#25 Chlordane-3

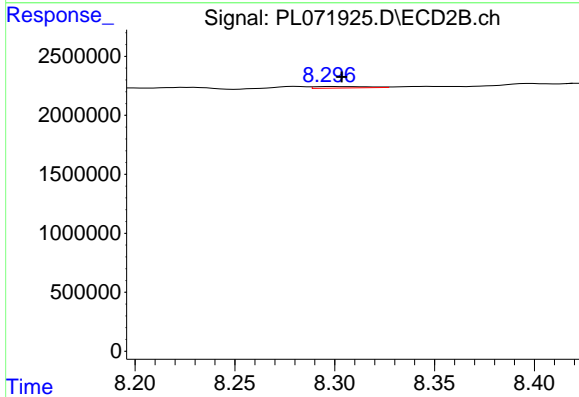
R.T.: 8.229 min  
 Delta R.T.: 0.007 min  
 Response: 354746  
 Conc: 1.74 ng/ml



#26 Chlordane-4

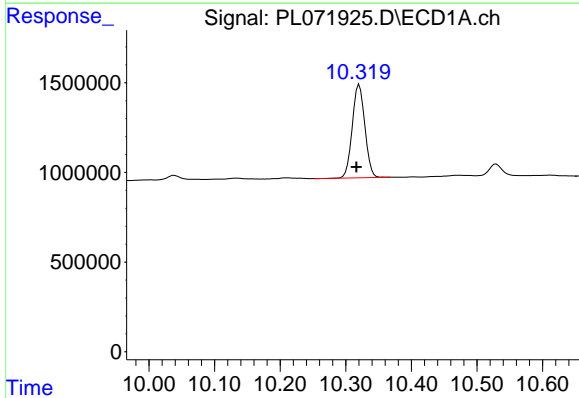
R.T.: 0.000 min  
 Exp R.T.: 7.336 min  
 Response: 0  
 Conc: N.D.

Instrument :  
 ECD\_L  
 ClientSampleId :



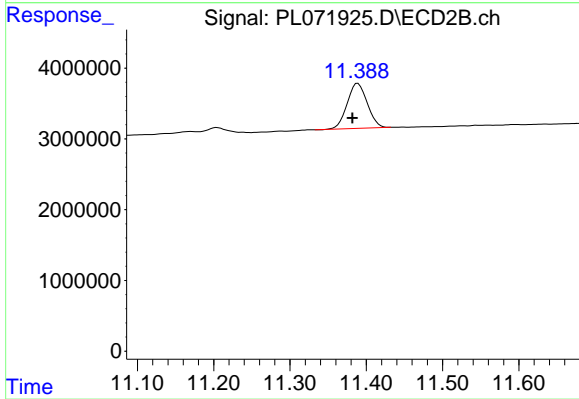
#26 Chlordane-4

R.T.: 8.298 min  
 Delta R.T.: -0.005 min  
 Response: 233981  
 Conc: 0.96 ng/ml



#28 Decachlorobiphenyl

R.T.: 10.320 min  
 Delta R.T.: 0.005 min  
 Response: 6951487  
 Conc: 9.61 ng/ml



#28 Decachlorobiphenyl

R.T.: 11.389 min  
 Delta R.T.: 0.007 min  
 Response: 11630314  
 Conc: 9.81 ng/ml