

Data Path : Z:\pestpcbsrv\HPCHEM1\ECD\_L\Data\PL011221\  
 Data File : PL064068.D  
 Signal(s) : Signal #1: ECD1A.ch Signal #2: ECD2B.ch  
 Acq On : 12 Jan 2021 18:25  
 Operator : AR\AJ  
 Sample : PSTDICV050  
 Misc :  
 ALS Vial : 20 Sample Multiplier: 1

Instrument :  
 ECD\_L  
 ClientSampleId :  
 ICVPL011221

Integration File signal 1: autoint1.e  
 Integration File signal 2: autoint2.e  
 Quant Time: Jan 13 05:30:00 2021  
 Quant Method : Z:\pestpcbsrv\HPCHEM1\ECD\_L\methods\PL011221.M  
 Quant Title : GC Extractables  
 QLast Update : Wed Jan 13 04:58:17 2021  
 Response via : Initial Calibration  
 Integrator: ChemStation

Volume Inj. : 1 µl  
 Signal #1 Phase : ZB-MR2 Signal #2 Phase: ZB-MR1  
 Signal #1 Info : 30M x 0.32mm x0.2 Signal #2 Info : 30M x 0.32mm x0.5µm

	Compound	RT#1	RT#2	Resp#1	Resp#2	ng/ml	ng/ml
-----							
System Monitoring Compounds							
1)	SA Tetrachlo...	3.436	4.107	139.4E6	120.6E6	46.505	47.192
2)	SA Decachlor...	8.168	9.267	134.4E6	105.6E6	44.050	44.512
Target Compounds							
2)	A alpha-BHC	3.869	4.509	229.1E6	170.8E6	46.055	46.748
3)	MA gamma-BHC...	4.149	4.800	209.8E6	159.6E6	45.255	45.295
4)	MA Heptachlor	4.449	5.313	205.3E6	164.4E6	46.849	45.769
5)	MB Aldrin	4.695	5.623	191.7E6	144.9E6	47.843	46.683
6)	B beta-BHC	4.399	4.976	88990477	79005775	47.683	48.954
7)	B delta-BHC	4.601	5.198	206.1E6	146.3E6	44.502	46.084
8)	Heptachlo...	5.136	6.017	176.4E6	125.2E6	46.538	48.057
9)	A Endosulfan I	5.472	6.379	163.2E6	125.2E6	46.199	45.679
10)	B gamma-Chl...	5.362	6.252	179.0E6	138.9E6	46.210	46.232
11)	B alpha-Chl...	5.420	6.325	174.7E6	137.4E6	45.653	45.120
12)	B 4,4'-DDE	5.586	6.482	163.6E6	122.8E6	46.442	46.114
13)	MA Dieldrin	5.714	6.640	169.6E6	127.7E6	45.599	45.417
14)	MA Endrin	5.968	6.861	146.4E6	98507727	42.155	43.138
15)	B Endosulfa...	6.240	7.075	143.0E6	105.3E6	42.191	41.695
16)	A 4,4'-DDD	6.099	6.980	136.2E6	101.4E6	46.708	45.766
17)	MA 4,4'-DDT	6.339	7.280	138.9E6	103.3E6	46.519	45.593
18)	B Endrin al...	6.408	7.200	116.0E6	88339127	40.435	40.744
19)	B Endosulfa...	6.621	7.424	148.9E6	107.7E6	43.884	43.614
20)	A Methoxychlor	6.886	7.739	73524366	58920000	43.996	43.607
21)	B Endrin ke...	7.107	7.903	165.6E6	113.6E6	46.097	45.538
22)	Mirex	7.294	8.356	125.3E6	92653439	46.062	45.673
23)	Chlordane-1	4.289	5.147f	597931	2959305	5.596	28.083 #
24)	Chlordane-2	0.000	5.623f	0	144.9E6	N.D.	1445.378 #
25)	Chlordane-3	5.362	6.252	179.0E6	138.9E6	498.250	350.369 #
26)	Chlordane-4	5.420	6.325	174.7E6	137.4E6	586.565	283.304 #
27)	Chlordane-5	6.240	0.000	143.0E6	0	1163.926	N.D. #

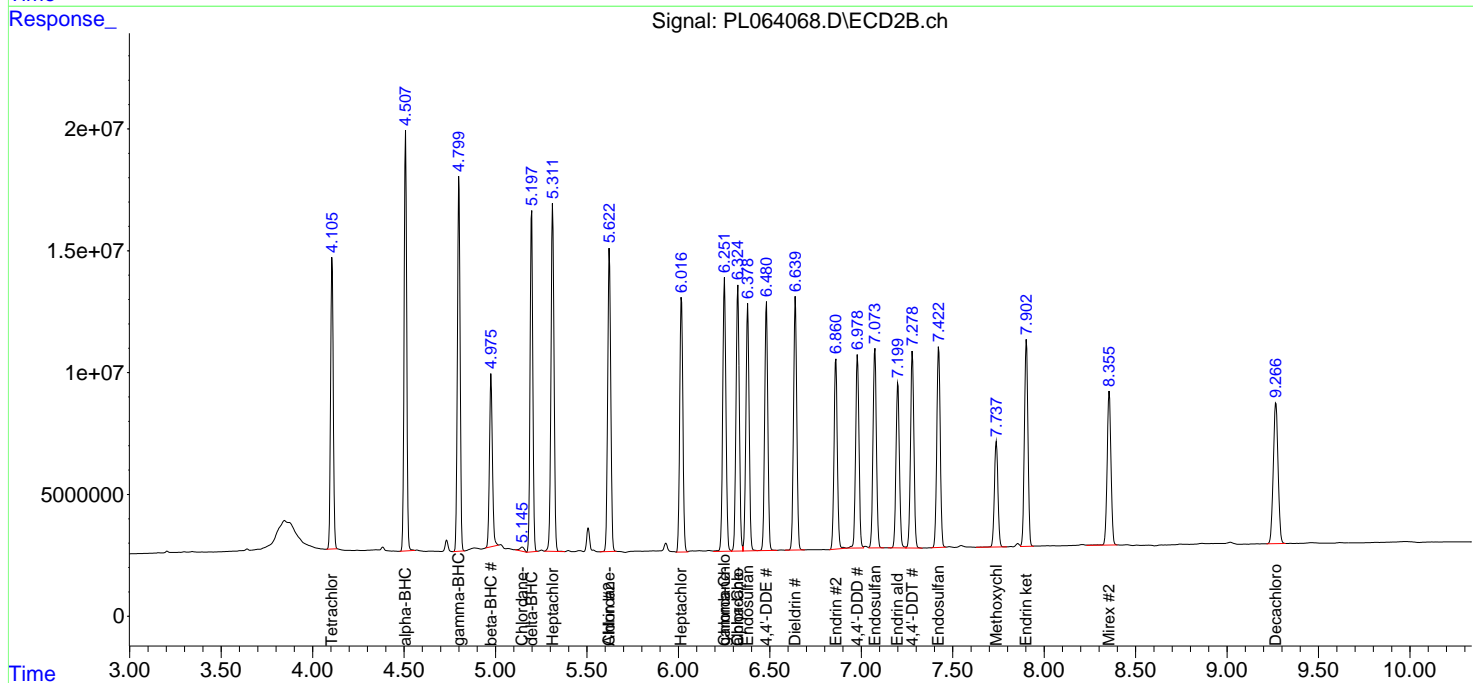
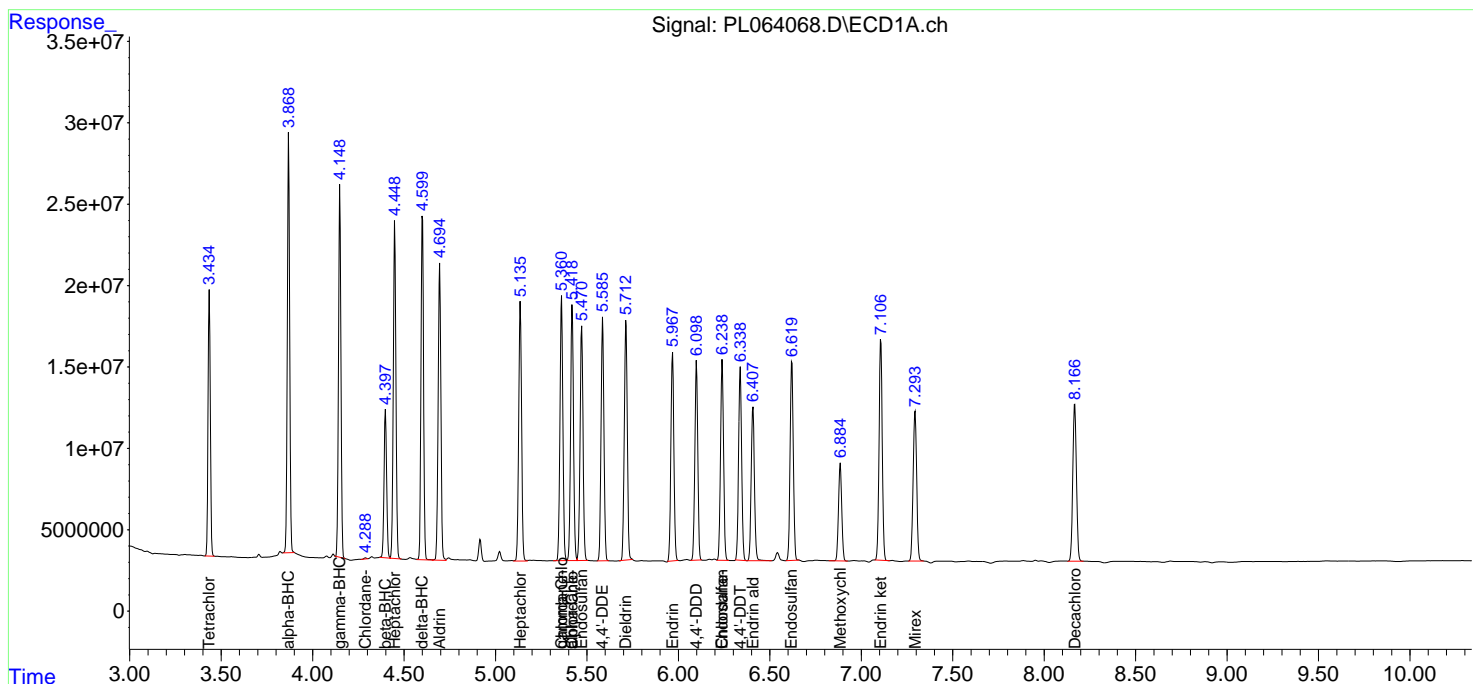
(f)=RT Delta > 1/2 Window (#)=Amounts differ by > 25% (m)=manual int.

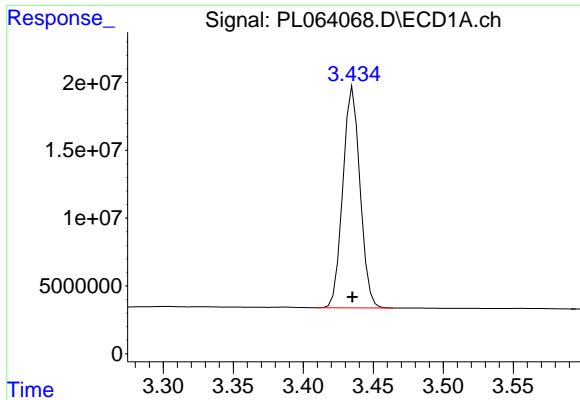
Data Path : Z:\pestpcbsrv\HPCHEM1\ECD\_L\Data\PL011221\  
 Data File : PL064068.D  
 Signal(s) : Signal #1: ECD1A.ch Signal #2: ECD2B.ch  
 Acq On : 12 Jan 2021 18:25  
 Operator : AR\AJ  
 Sample : PSTDICV050  
 Misc :  
 ALS Vial : 20 Sample Multiplier: 1

Instrument :  
 ECD\_L  
 Client Sampled :  
 ICSVPL011221

Integration File signal 1: autoint1.e  
 Integration File signal 2: autoint2.e  
 Quant Time: Jan 13 05:30:00 2021  
 Quant Method : Z:\pestpcbsrv\HPCHEM1\ECD\_L\methods\PL011221.M  
 Quant Title : GC Extractables  
 QLast Update : Wed Jan 13 04:58:17 2021  
 Response via : Initial Calibration  
 Integrator: ChemStation

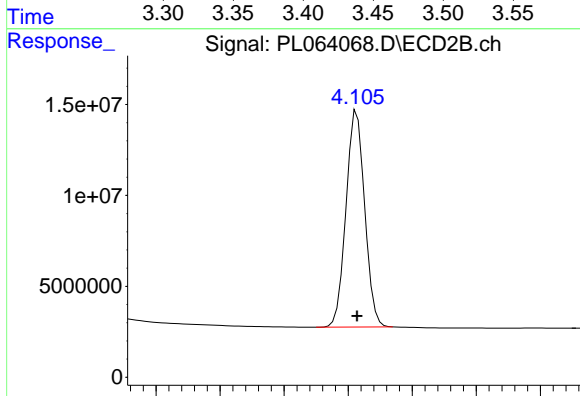
Volume Inj. : 1 µl  
 Signal #1 Phase : ZB-MR2 Signal #2 Phase: ZB-MR1  
 Signal #1 Info : 30M x 0.32mm x0.2 Signal #2 Info : 30M x 0.32mm x0.5µm



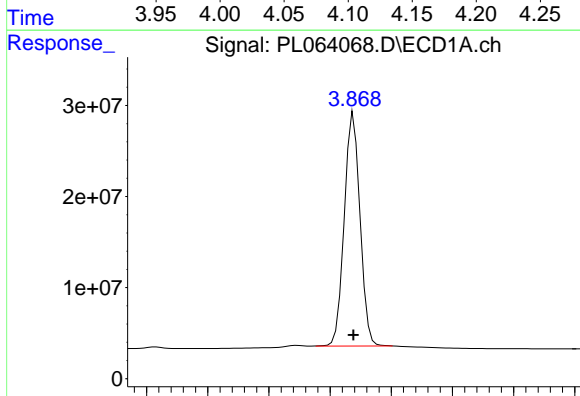


#1 Tetrachloro-m-xylene  
R.T.: 3.436 min  
Delta R.T.: 0.000 min  
Response: 139444864  
Conc: 46.51 ng/ml

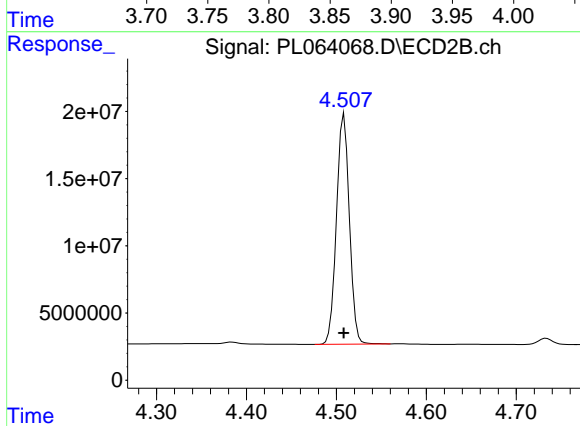
Instrument :  
ECD\_L  
ClientSampleId :  
ICVPL011221



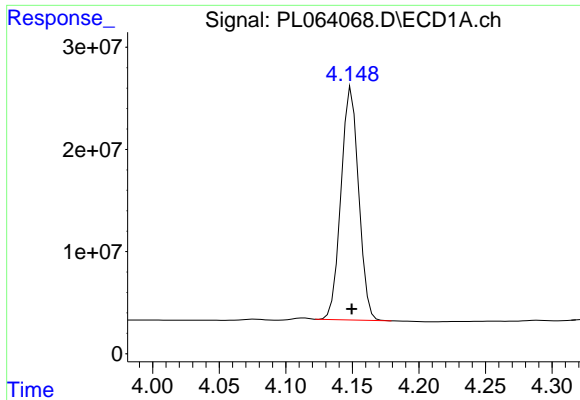
#1 Tetrachloro-m-xylene  
R.T.: 4.107 min  
Delta R.T.: 0.000 min  
Response: 120645212  
Conc: 47.19 ng/ml



#2 alpha-BHC  
R.T.: 3.869 min  
Delta R.T.: 0.000 min  
Response: 229071798  
Conc: 46.06 ng/ml

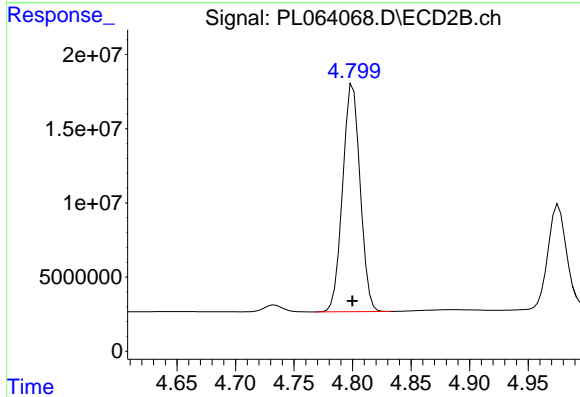


#2 alpha-BHC  
R.T.: 4.509 min  
Delta R.T.: 0.000 min  
Response: 170840852  
Conc: 46.75 ng/ml

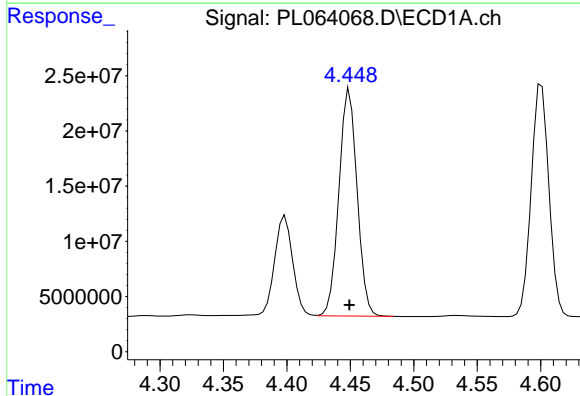


#3 gamma-BHC (Lindane)  
R.T.: 4.149 min  
Delta R.T.: 0.000 min  
Response: 209824354  
Conc: 45.25 ng/ml

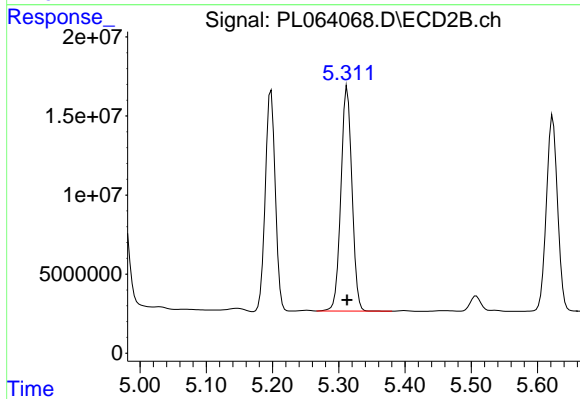
Instrument :  
ECD\_L  
ClientSampleId :  
ICVPL011221



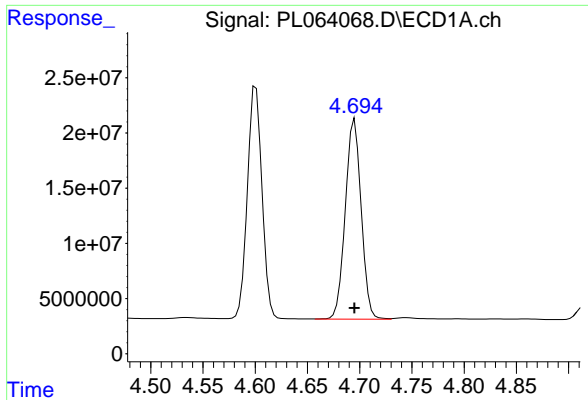
#3 gamma-BHC (Lindane)  
R.T.: 4.800 min  
Delta R.T.: 0.000 min  
Response: 159551835  
Conc: 45.30 ng/ml



#4 Heptachlor  
R.T.: 4.449 min  
Delta R.T.: 0.000 min  
Response: 205282774  
Conc: 46.85 ng/ml

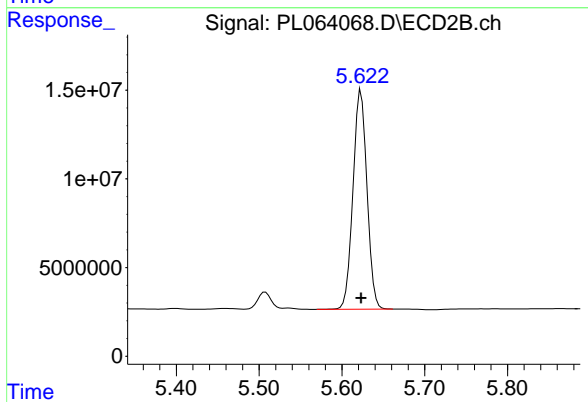


#4 Heptachlor  
R.T.: 5.313 min  
Delta R.T.: 0.000 min  
Response: 164390418  
Conc: 45.77 ng/ml

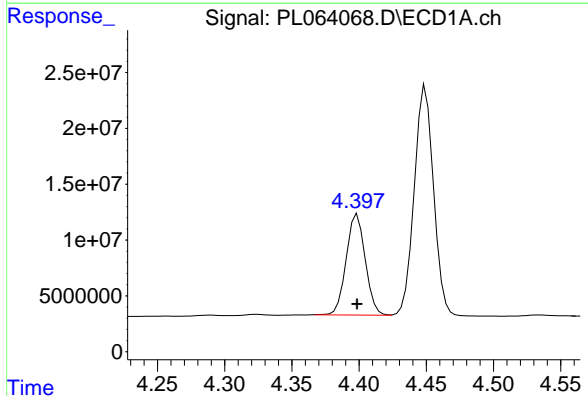


#5 Aldrin  
R.T.: 4.695 min  
Delta R.T.: 0.000 min  
Response: 191706294  
Conc: 47.84 ng/ml

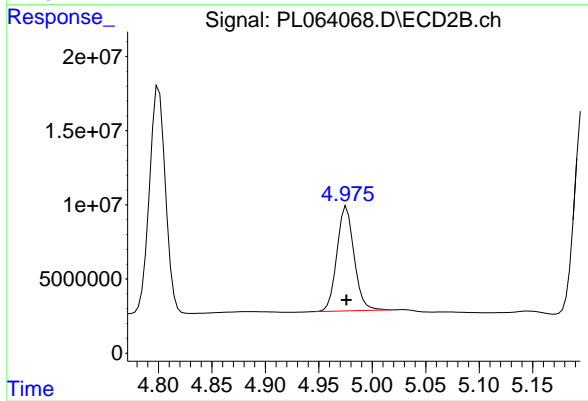
Instrument :  
ECD\_L  
ClientSampleId :  
ICVPL011221



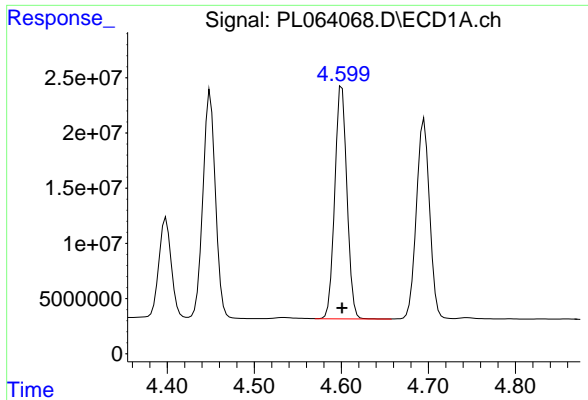
#5 Aldrin  
R.T.: 5.623 min  
Delta R.T.: 0.000 min  
Response: 144895742  
Conc: 46.68 ng/ml



#6 beta-BHC  
R.T.: 4.399 min  
Delta R.T.: 0.000 min  
Response: 88990477  
Conc: 47.68 ng/ml

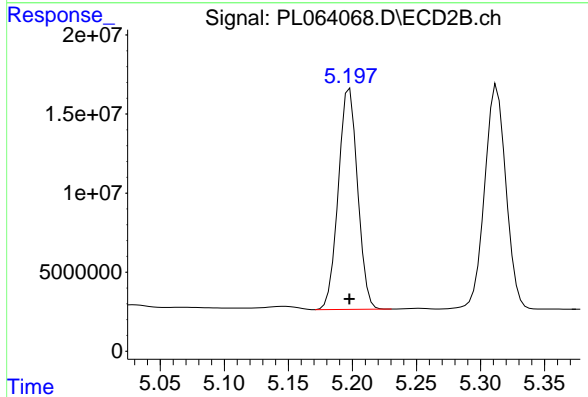


#6 beta-BHC  
R.T.: 4.976 min  
Delta R.T.: 0.000 min  
Response: 79005775  
Conc: 48.95 ng/ml

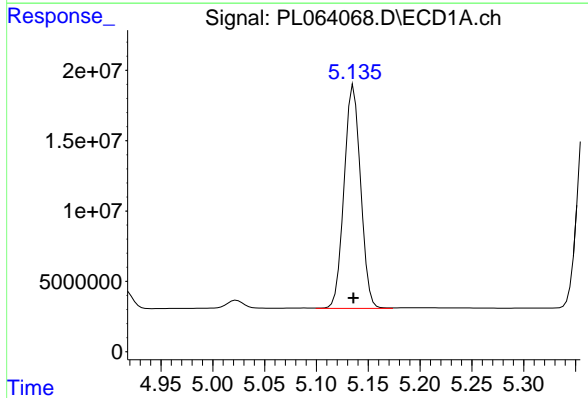


#7 delta-BHC  
 R.T.: 4.601 min  
 Delta R.T.: 0.000 min  
 Response: 206085496  
 Conc: 44.50 ng/ml

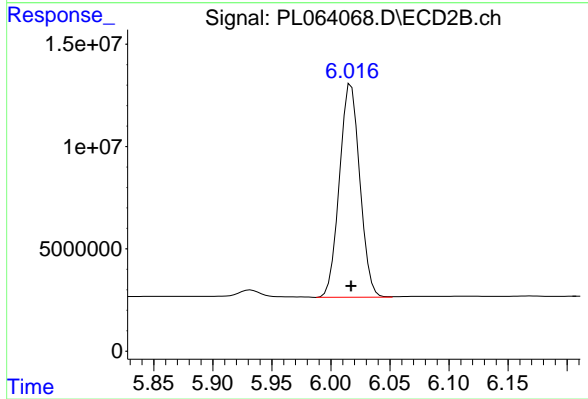
Instrument :  
 ECD\_L  
 ClientSampled :  
 ICVPL011221



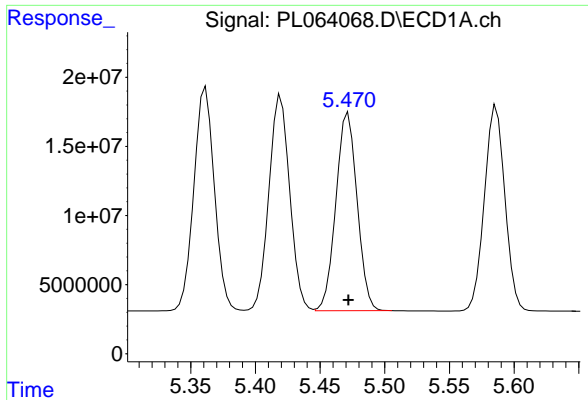
#7 delta-BHC  
 R.T.: 5.198 min  
 Delta R.T.: 0.000 min  
 Response: 146301923  
 Conc: 46.08 ng/ml



#8 Heptachlor epoxide  
 R.T.: 5.136 min  
 Delta R.T.: 0.000 min  
 Response: 176359865  
 Conc: 46.54 ng/ml

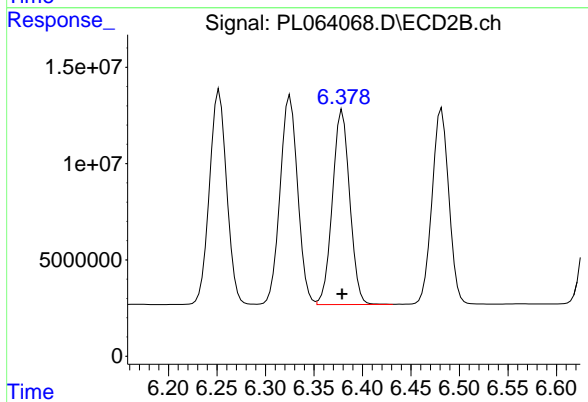


#8 Heptachlor epoxide  
 R.T.: 6.017 min  
 Delta R.T.: 0.000 min  
 Response: 125193428  
 Conc: 48.06 ng/ml

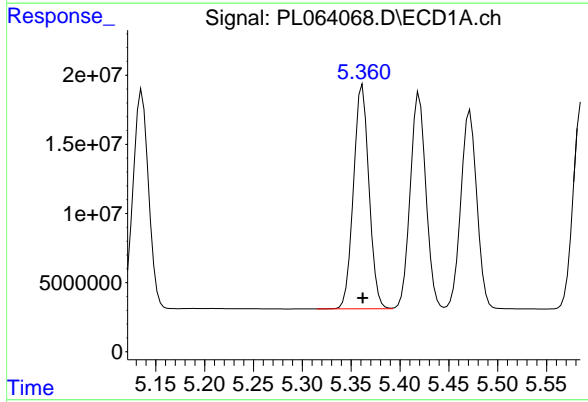


#9 Endosulfan I  
 R.T.: 5.472 min  
 Delta R.T.: 0.000 min  
 Response: 163184695  
 Conc: 46.20 ng/ml

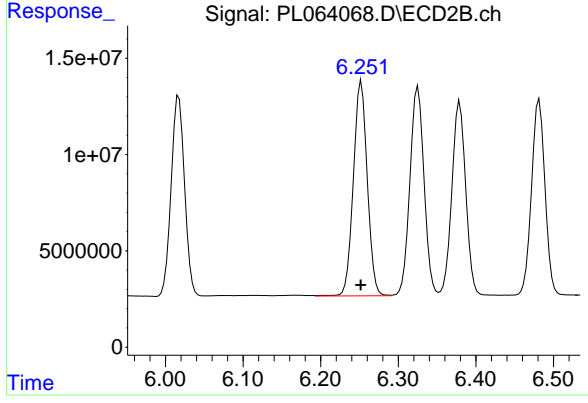
Instrument :  
 ECD\_L  
 ClientSampleId :  
 ICVPL011221



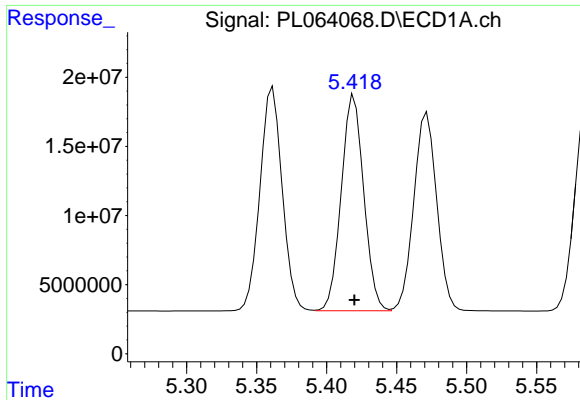
#9 Endosulfan I  
 R.T.: 6.379 min  
 Delta R.T.: 0.000 min  
 Response: 125195694  
 Conc: 45.68 ng/ml



#10 gamma-Chlordane  
 R.T.: 5.362 min  
 Delta R.T.: 0.000 min  
 Response: 179002500  
 Conc: 46.21 ng/ml

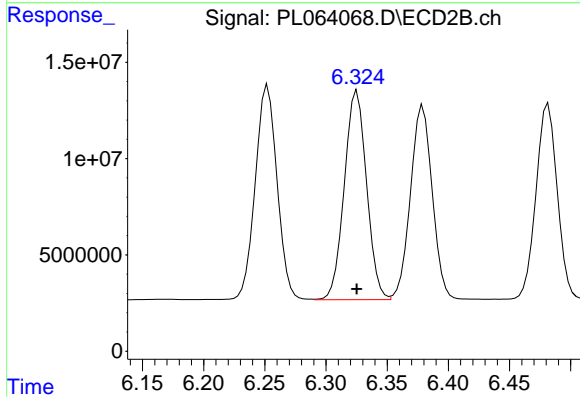


#10 gamma-Chlordane  
 R.T.: 6.252 min  
 Delta R.T.: 0.000 min  
 Response: 138917443  
 Conc: 46.23 ng/ml

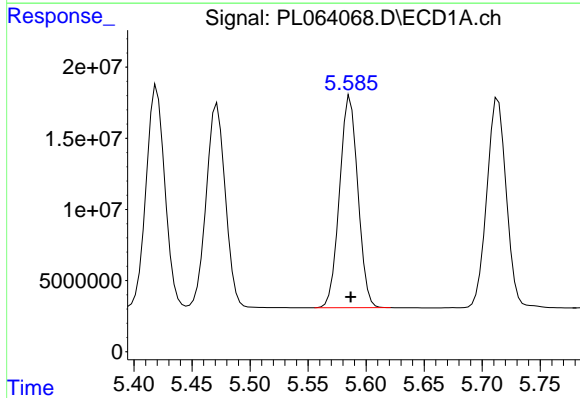


#11 alpha-Chlordane  
 R.T.: 5.420 min  
 Delta R.T.: 0.000 min  
 Response: 174678582  
 Conc: 45.65 ng/ml

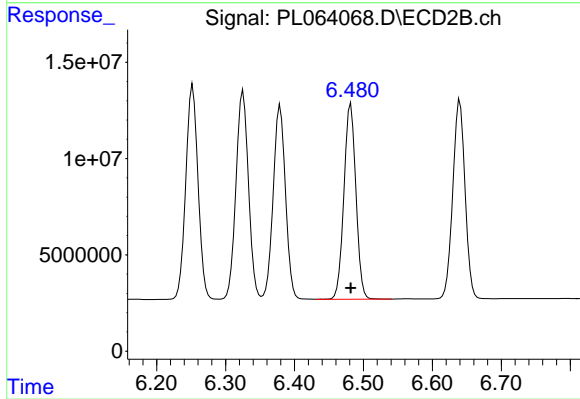
Instrument :  
 ECD\_L  
 ClientSampleId :  
 ICVPL011221



#11 alpha-Chlordane  
 R.T.: 6.325 min  
 Delta R.T.: 0.000 min  
 Response: 137350681  
 Conc: 45.12 ng/ml

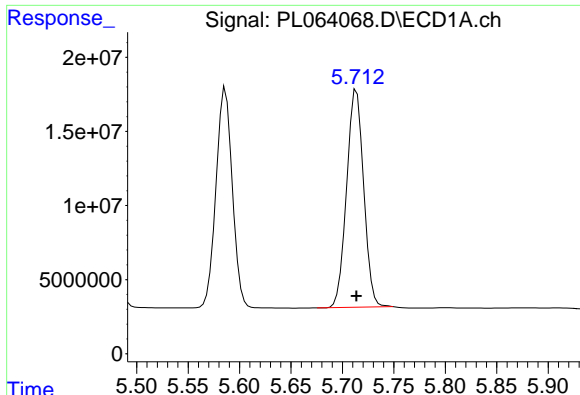


#12 4,4'-DDE  
 R.T.: 5.586 min  
 Delta R.T.: 0.000 min  
 Response: 163610135  
 Conc: 46.44 ng/ml



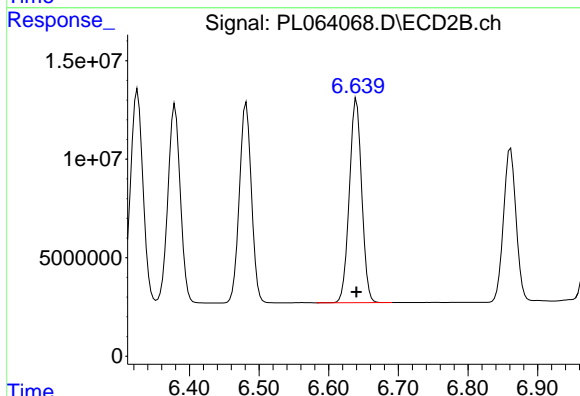
#12 4,4'-DDE  
 R.T.: 6.482 min  
 Delta R.T.: 0.000 min  
 Response: 122830254  
 Conc: 46.11 ng/ml



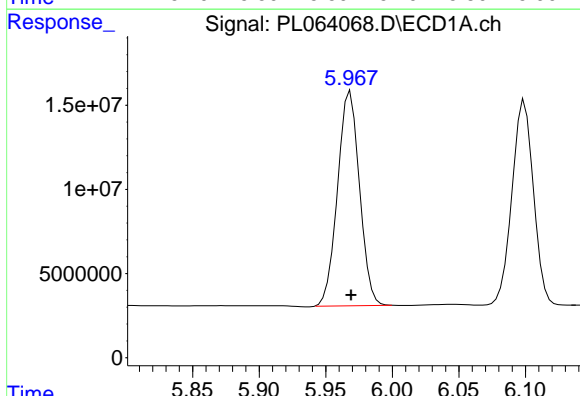


#13 Dieldrin  
 R.T.: 5.714 min  
 Delta R.T.: 0.000 min  
 Response: 169608740  
 Conc: 45.60 ng/ml

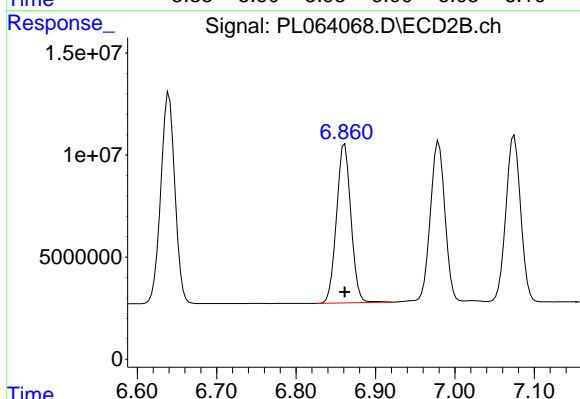
Instrument :  
 ECD\_L  
 ClientSampleId :  
 ICVPL011221



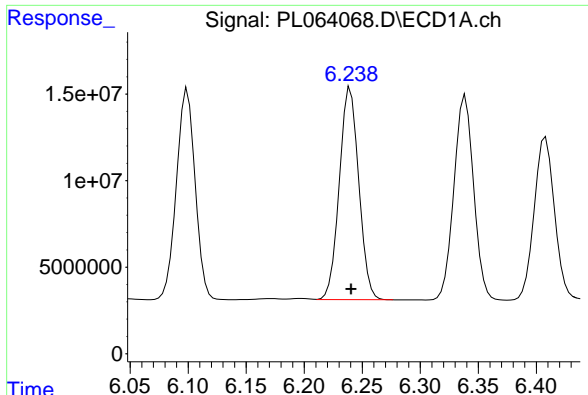
#13 Dieldrin  
 R.T.: 6.640 min  
 Delta R.T.: 0.000 min  
 Response: 127709983  
 Conc: 45.42 ng/ml



#14 Endrin  
 R.T.: 5.968 min  
 Delta R.T.: 0.000 min  
 Response: 146379138  
 Conc: 42.15 ng/ml



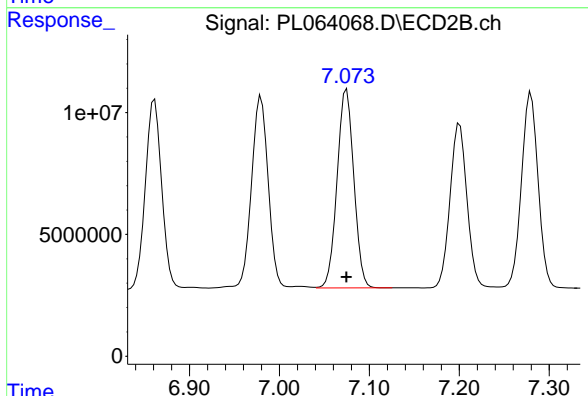
#14 Endrin  
 R.T.: 6.861 min  
 Delta R.T.: 0.000 min  
 Response: 98507727  
 Conc: 43.14 ng/ml



#15 Endosulfan II

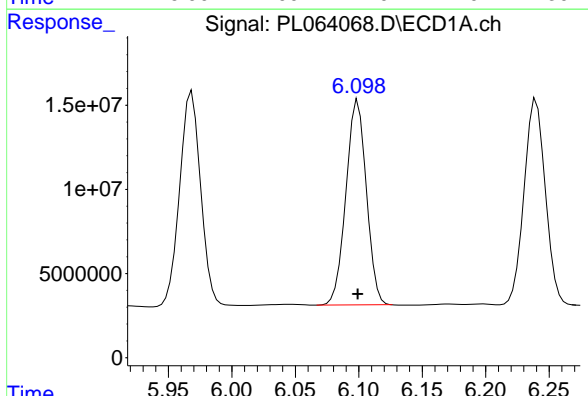
R.T.: 6.240 min  
Delta R.T.: 0.000 min  
Response: 143014336  
Conc: 42.19 ng/ml

Instrument :  
ECD\_L  
ClientSampled :  
ICVPL011221



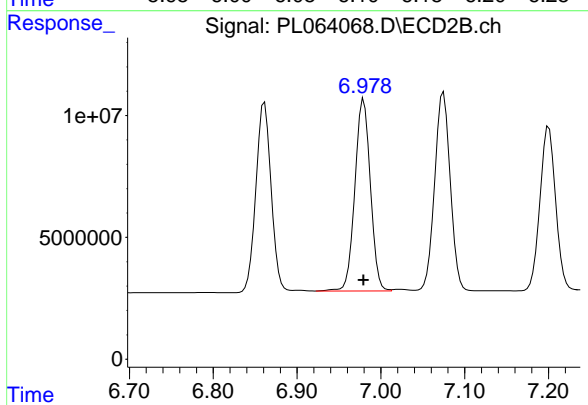
#15 Endosulfan II

R.T.: 7.075 min  
Delta R.T.: 0.000 min  
Response: 105327844  
Conc: 41.69 ng/ml



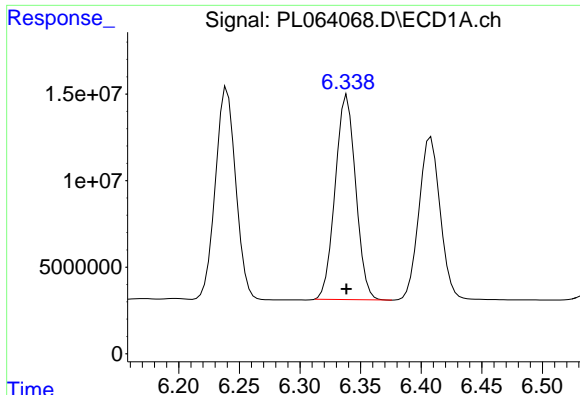
#16 4,4'-DDD

R.T.: 6.099 min  
Delta R.T.: 0.000 min  
Response: 136228585  
Conc: 46.71 ng/ml



#16 4,4'-DDD

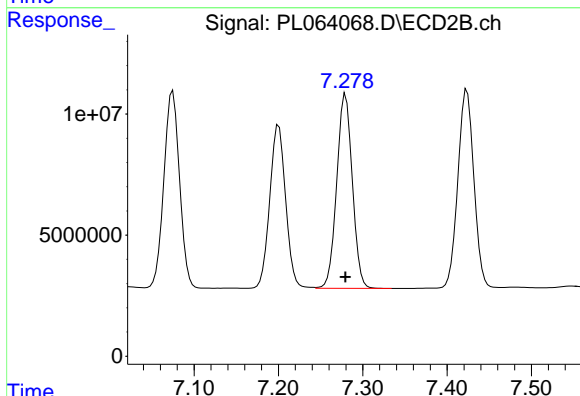
R.T.: 6.980 min  
Delta R.T.: 0.000 min  
Response: 101441967  
Conc: 45.77 ng/ml



#17 4,4'-DDT

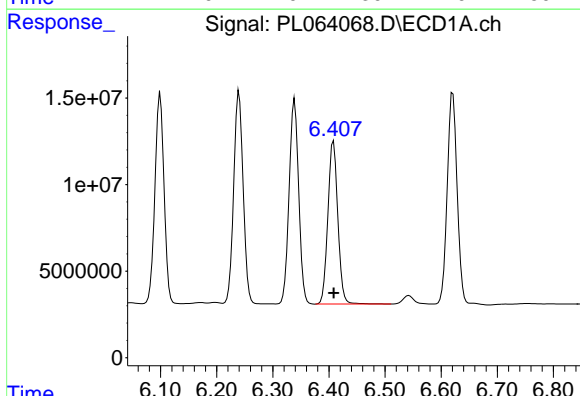
R.T.: 6.339 min  
 Delta R.T.: 0.000 min  
 Response: 138875520  
 Conc: 46.52 ng/ml

Instrument :  
 ECD\_L  
 ClientSampleId :  
 ICVPL011221



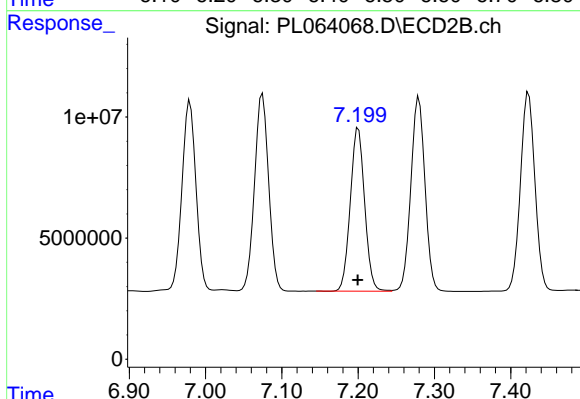
#17 4,4'-DDT

R.T.: 7.280 min  
 Delta R.T.: 0.000 min  
 Response: 103265679  
 Conc: 45.59 ng/ml



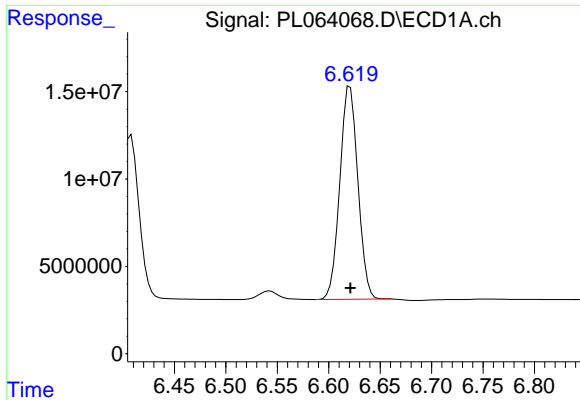
#18 Endrin aldehyde

R.T.: 6.408 min  
 Delta R.T.: 0.000 min  
 Response: 115987862  
 Conc: 40.43 ng/ml



#18 Endrin aldehyde

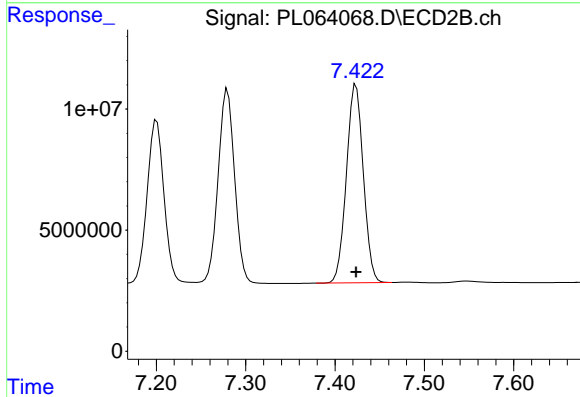
R.T.: 7.200 min  
 Delta R.T.: 0.000 min  
 Response: 88339127  
 Conc: 40.74 ng/ml



#19 Endosulfan Sulfate

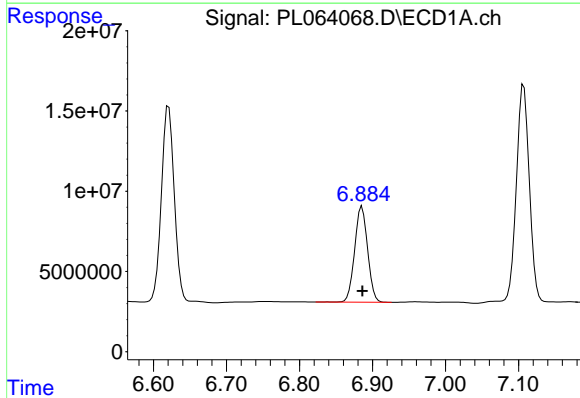
R.T.: 6.621 min  
 Delta R.T.: 0.000 min  
 Response: 148873784  
 Conc: 43.88 ng/ml

Instrument :  
 ECD\_L  
 ClientSampleId :  
 ICVPL011221



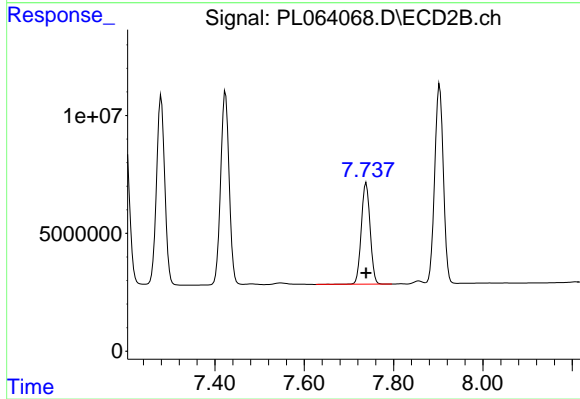
#19 Endosulfan Sulfate

R.T.: 7.424 min  
 Delta R.T.: 0.000 min  
 Response: 107727876  
 Conc: 43.61 ng/ml



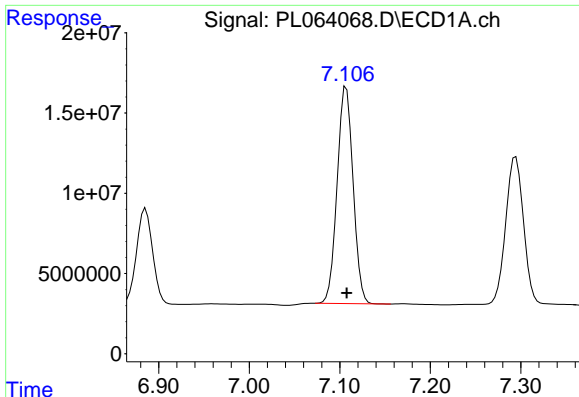
#20 Methoxychlor

R.T.: 6.886 min  
 Delta R.T.: 0.000 min  
 Response: 73524366  
 Conc: 44.00 ng/ml



#20 Methoxychlor

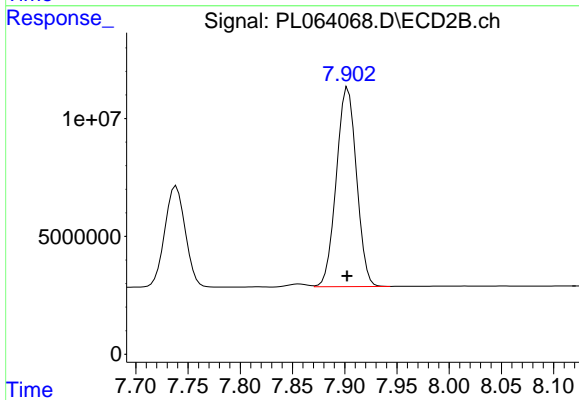
R.T.: 7.739 min  
 Delta R.T.: 0.000 min  
 Response: 58920000  
 Conc: 43.61 ng/ml



#21 Endrin ketone

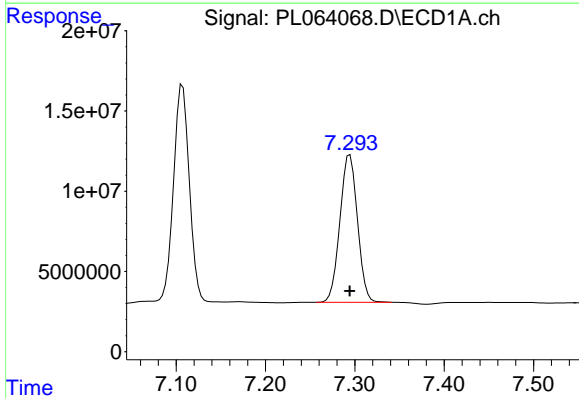
R.T.: 7.107 min  
 Delta R.T.: 0.000 min  
 Response: 165550757  
 Conc: 46.10 ng/ml

Instrument :  
 ECD\_L  
 ClientSampleId :  
 ICVPL011221



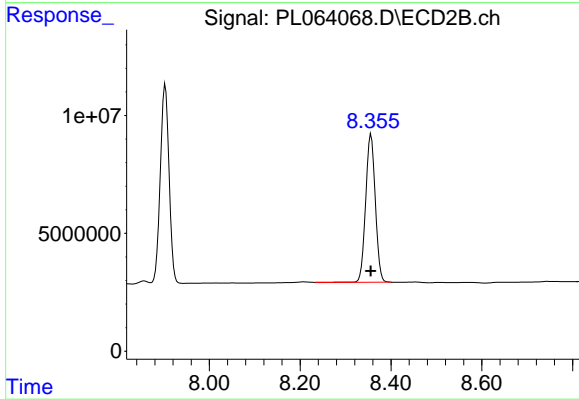
#21 Endrin ketone

R.T.: 7.903 min  
 Delta R.T.: 0.000 min  
 Response: 113580088  
 Conc: 45.54 ng/ml



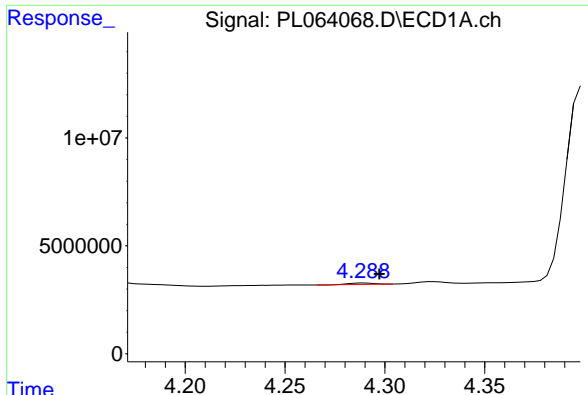
#22 Mirex

R.T.: 7.294 min  
 Delta R.T.: 0.000 min  
 Response: 125319833  
 Conc: 46.06 ng/ml



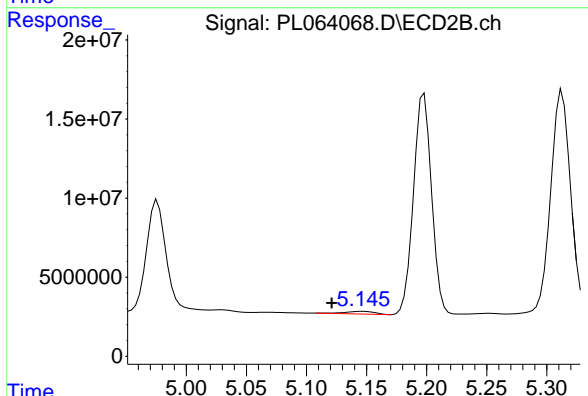
#22 Mirex

R.T.: 8.356 min  
 Delta R.T.: 0.000 min  
 Response: 92653439  
 Conc: 45.67 ng/ml

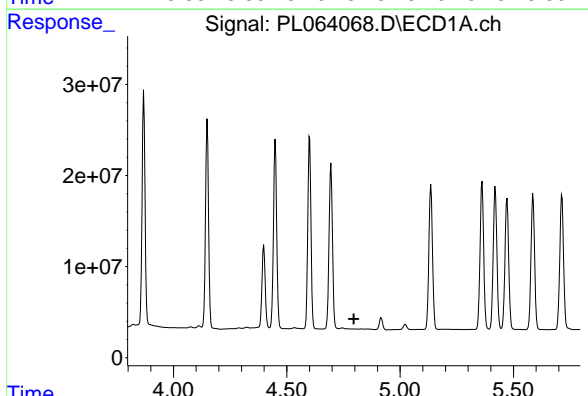


#23 Chlordane-1  
 R.T.: 4.289 min  
 Delta R.T.: -0.008 min  
 Response: 597931  
 Conc: 5.60 ng/ml

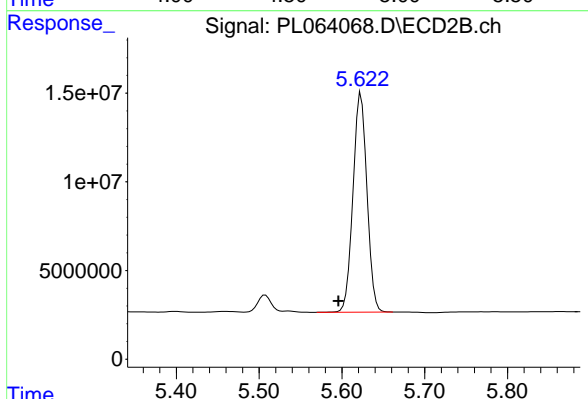
Instrument :  
 ECD\_L  
 ClientSampled :  
 ICVPL011221



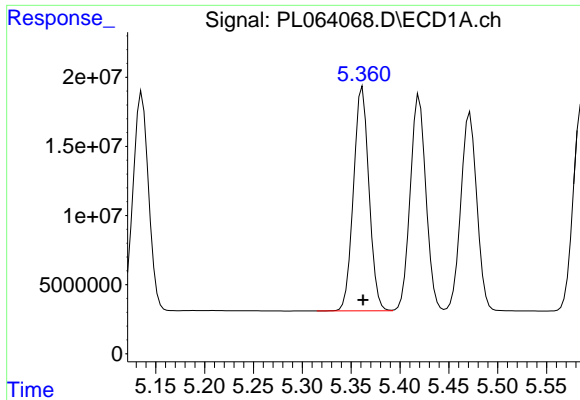
#23 Chlordane-1  
 R.T.: 5.147 min  
 Delta R.T.: 0.026 min  
 Response: 2959305  
 Conc: 28.08 ng/ml



#24 Chlordane-2  
 R.T.: 0.000 min  
 Exp R.T. : 4.796 min  
 Response: 0  
 Conc: N.D.

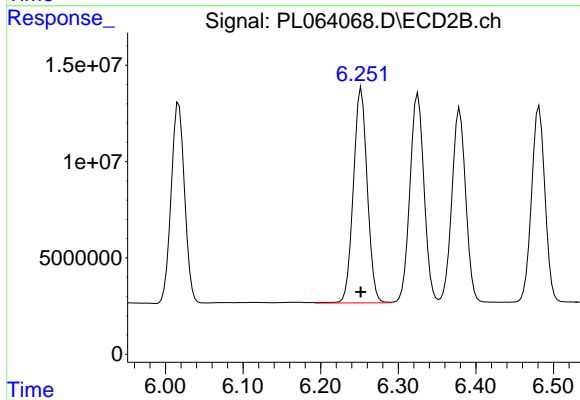


#24 Chlordane-2  
 R.T.: 5.623 min  
 Delta R.T.: 0.027 min  
 Response: 144895742  
 Conc: 1445.38 ng/ml

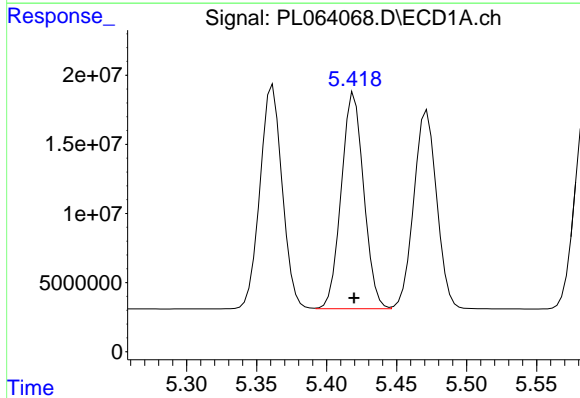


#25 Chlordane-3  
R.T.: 5.362 min  
Delta R.T.: 0.000 min  
Response: 179002500  
Conc: 498.25 ng/ml

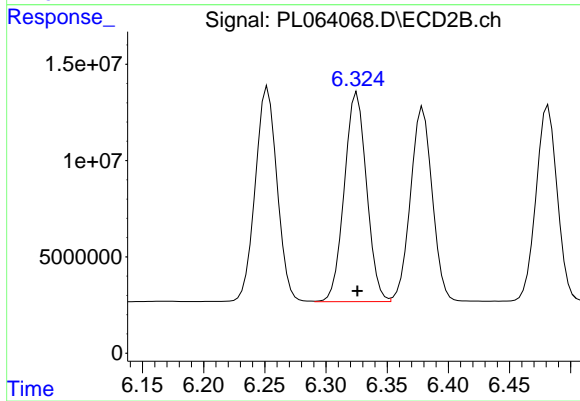
Instrument :  
ECD\_L  
ClientSampleId :  
ICVPL011221



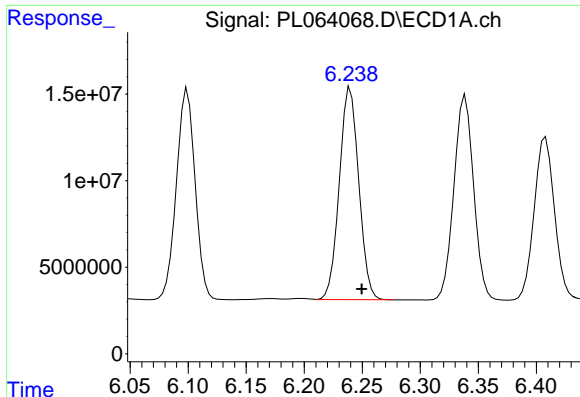
#25 Chlordane-3  
R.T.: 6.252 min  
Delta R.T.: 0.000 min  
Response: 138917443  
Conc: 350.37 ng/ml



#26 Chlordane-4  
R.T.: 5.420 min  
Delta R.T.: 0.000 min  
Response: 174678582  
Conc: 586.56 ng/ml



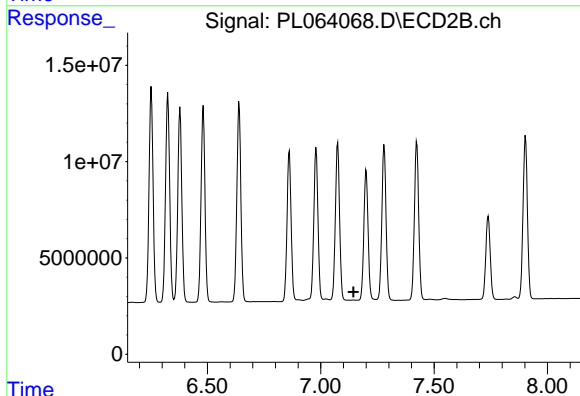
#26 Chlordane-4  
R.T.: 6.325 min  
Delta R.T.: 0.000 min  
Response: 137350681  
Conc: 283.30 ng/ml



#27 Chlordane-5

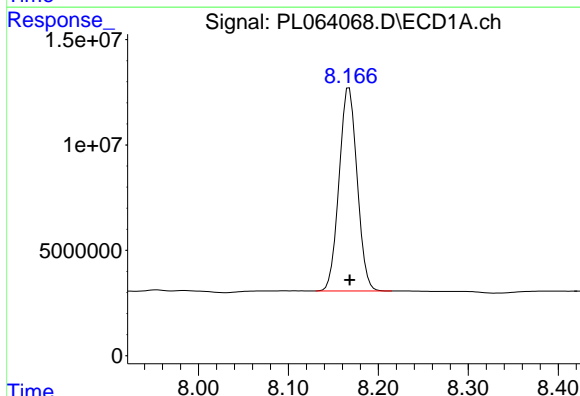
R.T.: 6.240 min  
 Delta R.T.: -0.010 min  
 Response: 143014336  
 Conc: 1163.93 ng/ml

Instrument :  
 ECD\_L  
 ClientSampleId :  
 ICVPL011221



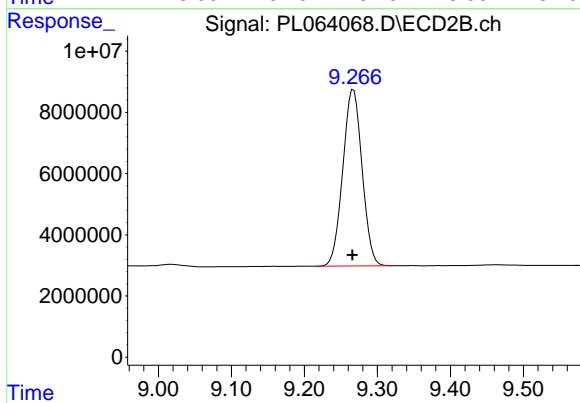
#27 Chlordane-5

R.T.: 0.000 min  
 Exp R.T. : 7.145 min  
 Response: 0  
 Conc: N.D.



#28 Decachlorobiphenyl

R.T.: 8.168 min  
 Delta R.T.: 0.000 min  
 Response: 134443255  
 Conc: 44.05 ng/ml



#28 Decachlorobiphenyl

R.T.: 9.267 min  
 Delta R.T.: 0.001 min  
 Response: 105644352  
 Conc: 44.51 ng/ml