

Data Path : Z:\pestpcbsrv\HPCHEM1\ECD_L\Data\PL011223\
 Data File : PL080249.D
 Signal(s) : Signal #1: ECD1A.ch Signal #2: ECD2B.ch
 Acq On : 11 Jan 2023 22:18
 Operator : AR\AJ
 Sample : PCHLORICC1000
 Misc :
 ALS Vial : 10 Sample Multiplier: 1

Instrument :
 ECD_L
 ClientSampleId :
 PCHLORICC1000

Integration File signal 1: autoint1.e
 Integration File signal 2: autoint2.e
 Quant Time: Jan 12 00:56:34 2023
 Quant Method : Z:\pestpcbsrv\HPCHEM1\ECD_L\methods\PL011223.M
 Quant Title : GC Extractables
 QLast Update : Thu Jan 12 00:48:27 2023
 Response via : Initial Calibration
 Integrator: ChemStation

Volume Inj. : 1 µl
 Signal #1 Phase : ZB-MR2 Signal #2 Phase: ZB-MR1
 Signal #1 Info : 30M x 0.32mm x0.2 Signal #2 Info : 30M x 0.32mm x0.5µm

Compound	RT#1	RT#2	Resp#1	Resp#2	ng/ml	ng/ml

System Monitoring Compounds						
1) SA Tetrachlo...	3.352	2.691	210.6E6	290.9E6	101.204	101.763
28) SA Decachlor...	8.787	7.841	149.9E6	222.9E6	99.157	98.429
Target Compounds						
23) Chlordane-1	4.499	3.688	81353555	85125283	1006.642	1014.200
24) Chlordane-2	5.026	4.265	86290446	104.4E6	987.682	988.294
25) Chlordane-3	5.731	4.896	346.0E6	309.6E6	1020.635	1027.678
26) Chlordane-4	5.813	4.958	417.6E6	307.7E6	1013.137	1023.588
27) Chlordane-5	6.655	5.627	70833194	78532851	998.093	1004.880

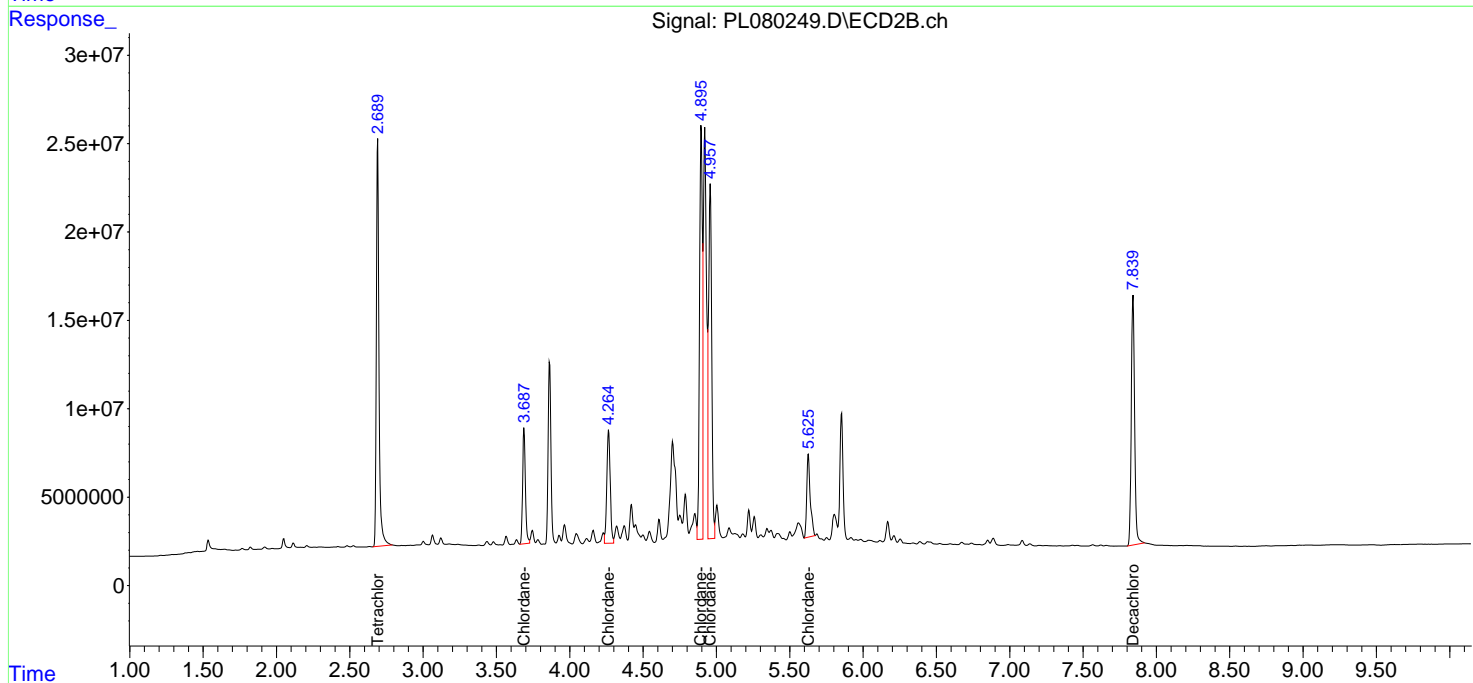
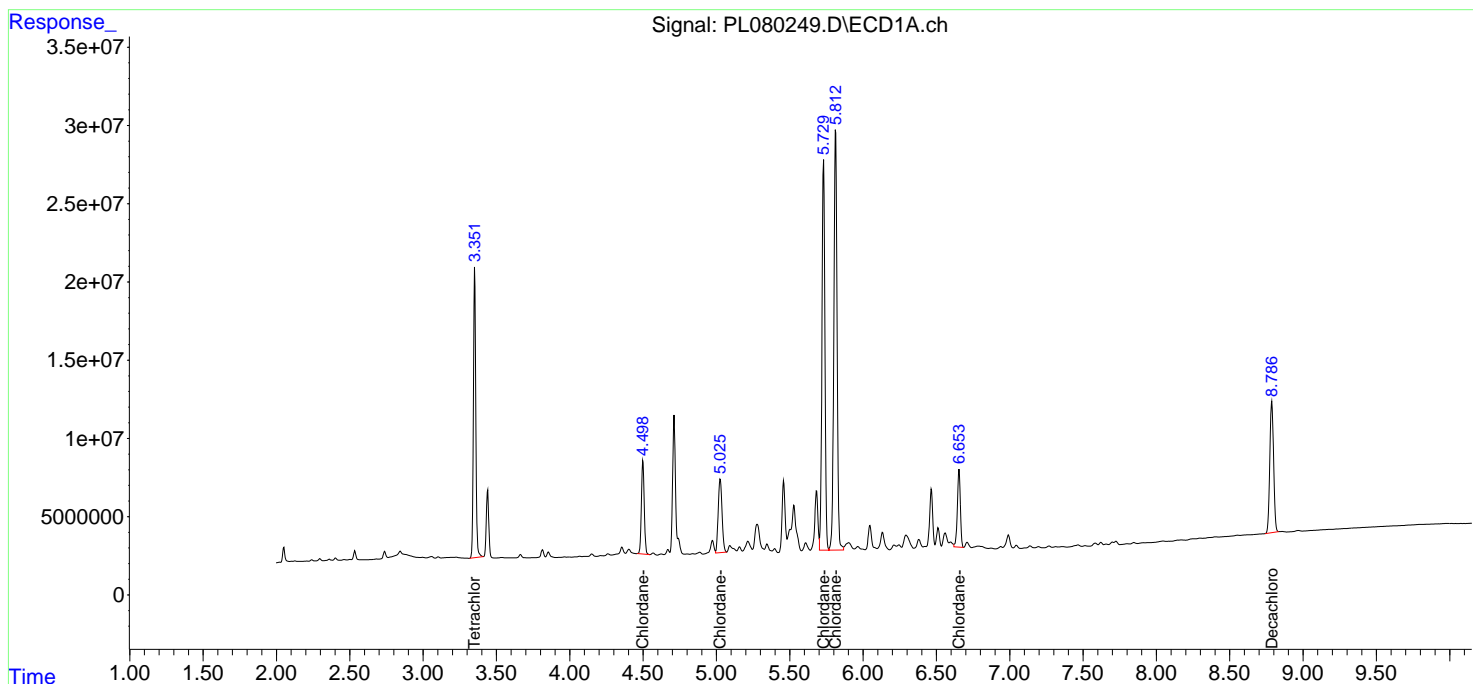
(f)=RT Delta > 1/2 Window (#)=Amounts differ by > 25% (m)=manual int.

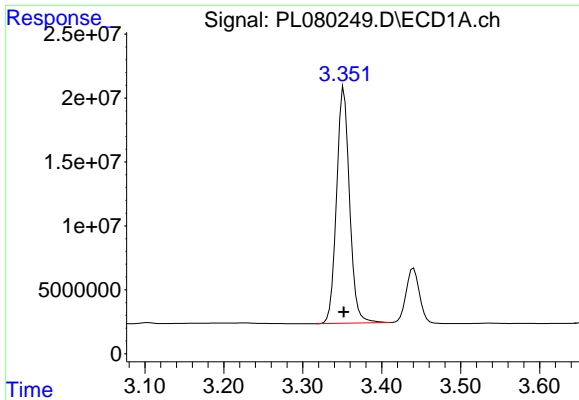
Data Path : Z:\pestpcbsrv\HPCHEM1\ECD_L\Data\PL011223\
 Data File : PL080249.D
 Signal(s) : Signal #1: ECD1A.ch Signal #2: ECD2B.ch
 Acq On : 11 Jan 2023 22:18
 Operator : AR\AJ
 Sample : PCHLORICC1000
 Misc :
 ALS Vial : 10 Sample Multiplier: 1

Instrument :
 ECD_L
 ClientSampleId :
 PCHLORICC1000

Integration File signal 1: autoint1.e
 Integration File signal 2: autoint2.e
 Quant Time: Jan 12 00:56:34 2023
 Quant Method : Z:\pestpcbsrv\HPCHEM1\ECD_L\methods\PL011223.M
 Quant Title : GC Extractables
 QLast Update : Thu Jan 12 00:48:27 2023
 Response via : Initial Calibration
 Integrator: ChemStation

Volume Inj. : 1 µl
 Signal #1 Phase : ZB-MR2 Signal #2 Phase: ZB-MR1
 Signal #1 Info : 30M x 0.32mm x0.2 Signal #2 Info : 30M x 0.32mm x0.5µm

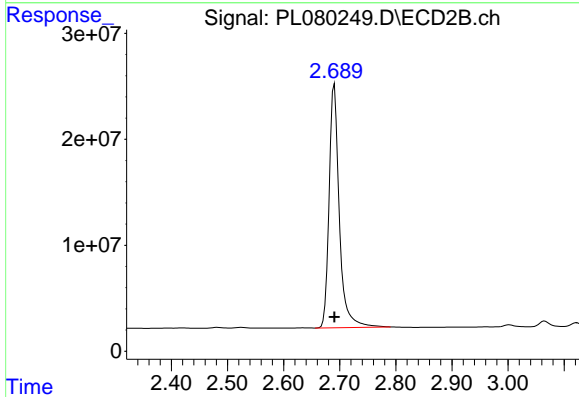




#1 Tetrachloro-m-xylene

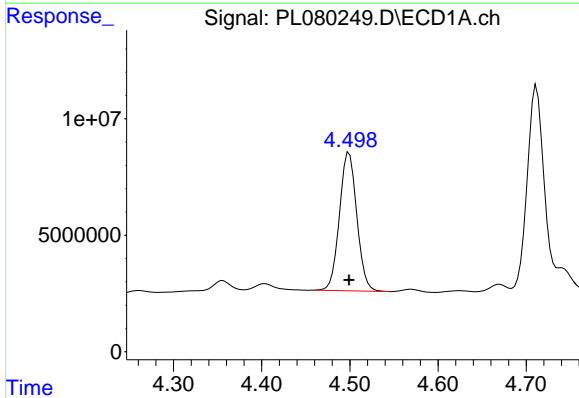
R.T.: 3.352 min
 Delta R.T.: 0.000 min
 Response: 210612672
 Conc: 101.20 ng/ml

Instrument :
 ECD_L
 ClientSampleId :
 PCHLORICC1000



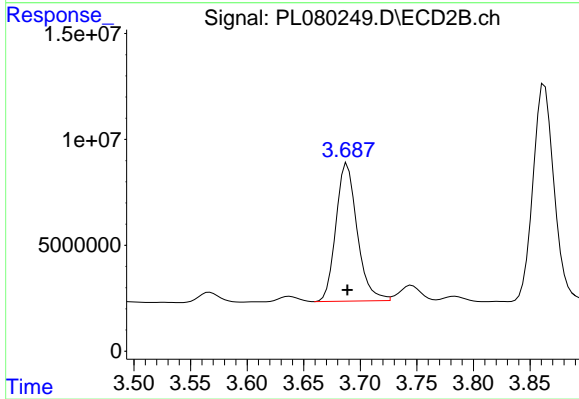
#1 Tetrachloro-m-xylene

R.T.: 2.691 min
 Delta R.T.: 0.000 min
 Response: 290944548
 Conc: 101.76 ng/ml



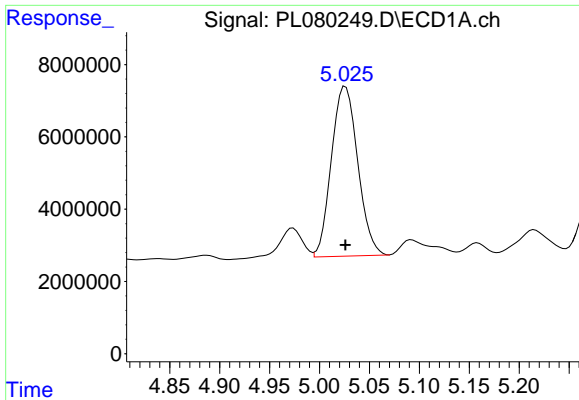
#23 Chlordane-1

R.T.: 4.499 min
 Delta R.T.: 0.000 min
 Response: 81353555
 Conc: 1006.64 ng/ml



#23 Chlordane-1

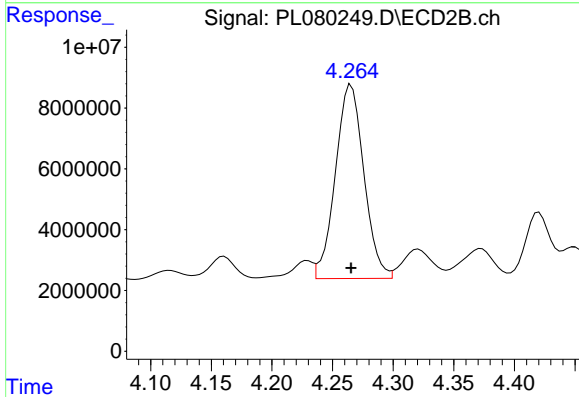
R.T.: 3.688 min
 Delta R.T.: 0.000 min
 Response: 85125283
 Conc: 1014.20 ng/ml



#24 Chlordane-2

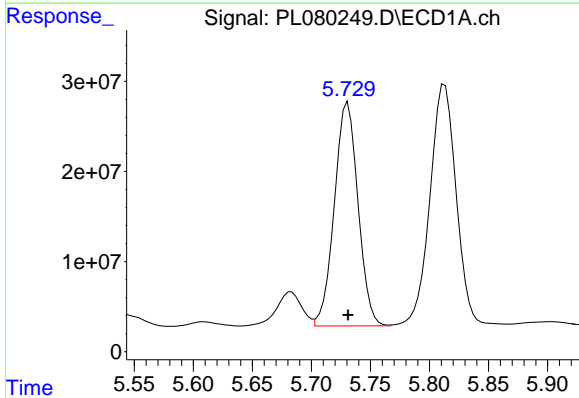
R.T.: 5.026 min
 Delta R.T.: 0.000 min
 Response: 86290446
 Conc: 987.68 ng/ml

Instrument :
 ECD_L
 ClientSampleId :
 PCHLORICC1000



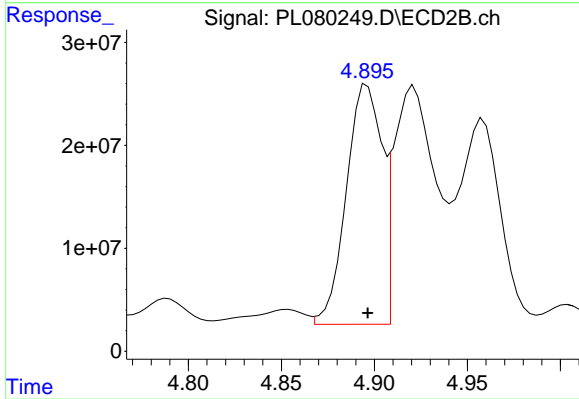
#24 Chlordane-2

R.T.: 4.265 min
 Delta R.T.: 0.000 min
 Response: 104428820
 Conc: 988.29 ng/ml



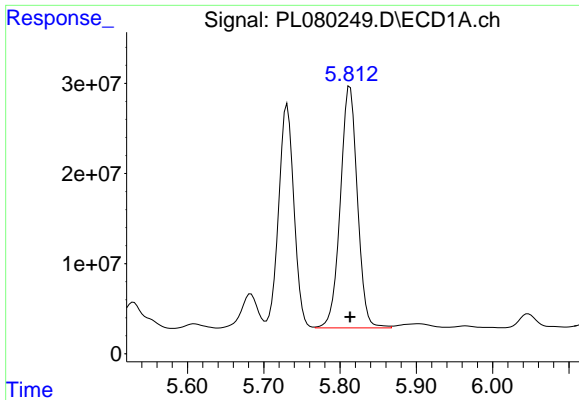
#25 Chlordane-3

R.T.: 5.731 min
 Delta R.T.: 0.000 min
 Response: 346039828
 Conc: 1020.63 ng/ml



#25 Chlordane-3

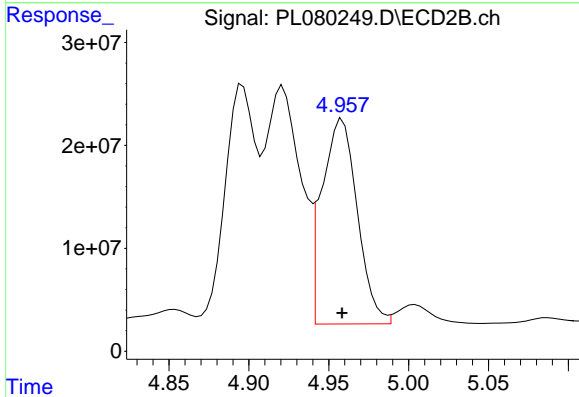
R.T.: 4.896 min
 Delta R.T.: 0.000 min
 Response: 309569566
 Conc: 1027.68 ng/ml



#26 Chlordane-4

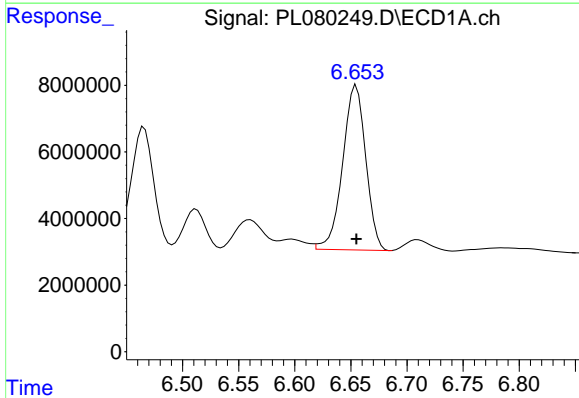
R.T.: 5.813 min
 Delta R.T.: 0.000 min
 Response: 417626062
 Conc: 1013.14 ng/ml

Instrument :
 ECD_L
 ClientSampleId :
 PCHLORICC1000



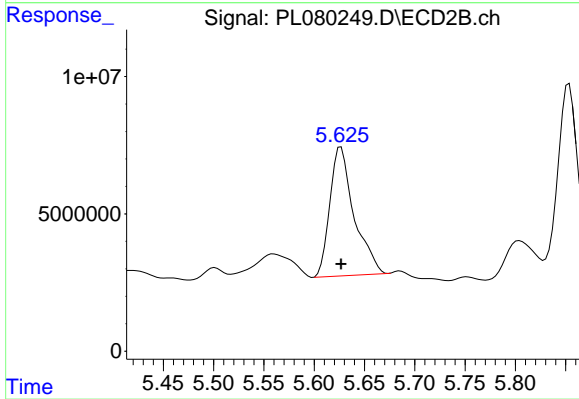
#26 Chlordane-4

R.T.: 4.958 min
 Delta R.T.: 0.000 min
 Response: 307682766
 Conc: 1023.59 ng/ml



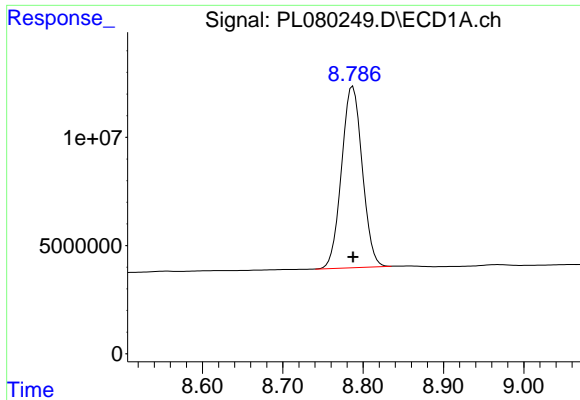
#27 Chlordane-5

R.T.: 6.655 min
 Delta R.T.: 0.000 min
 Response: 70833194
 Conc: 998.09 ng/ml



#27 Chlordane-5

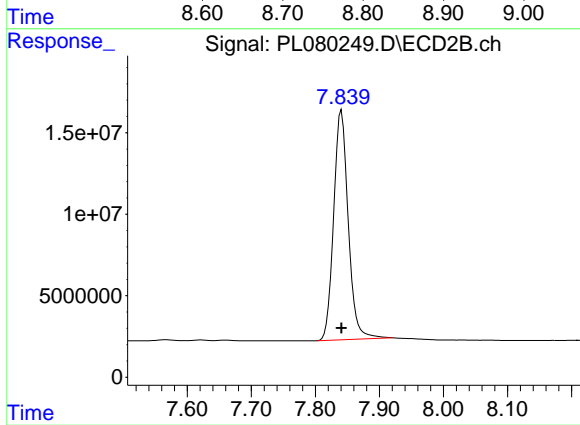
R.T.: 5.627 min
 Delta R.T.: 0.000 min
 Response: 78532851
 Conc: 1004.88 ng/ml



#28 Decachlorobiphenyl

R.T.: 8.787 min
Delta R.T.: 0.000 min
Response: 149940302
Conc: 99.16 ng/ml

Instrument :
ECD_L
ClientSampleId :
PCHLORICC1000



#28 Decachlorobiphenyl

R.T.: 7.841 min
Delta R.T.: 0.000 min
Response: 222942331
Conc: 98.43 ng/ml