

Data Path : Z:\pestpcbsrv\HPCHEM1\ECD_L\Data\PL011320\
 Data File : PL055702.D
 Signal(s) : Signal #1: ECD1A.ch Signal #2: ECD2B.ch
 Acq On : 13 Jan 2020 15:05
 Operator : AJ\MA
 Sample : I.BLK
 Misc :
 ALS Vial : 2 Sample Multiplier: 1

Instrument :
 ECD_L
 ClientSampleId :
 I.BLK

Integration File signal 1: autoint1.e
 Integration File signal 2: autoint2.e
 Quant Time: Jan 13 16:25:10 2020
 Quant Method : Z:\pestpcbsrv\HPCHEM1\ECD_L\methods\PL011020.M
 Quant Title : GC Extractables
 QLast Update : Fri Jan 10 00:58:33 2020
 Response via : Initial Calibration
 Integrator: ChemStation

Volume Inj. : 1 µl
 Signal #1 Phase : ZB-MR2 Signal #2 Phase: ZB-MR1
 Signal #1 Info : 30M x 0.32mm x0.2 Signal #2 Info : 30M x 0.32mm x0.5µm

Compound	RT#1	RT#2	Resp#1	Resp#2	ng/ml	ng/ml

System Monitoring Compounds						
1) SA Tetrachlo...	3.491	3.968	206.7E6	61749207	22.372	23.309
28) SA Decachlor...	8.237	8.957	180.5E6	45583014	20.559	21.925

Target Compounds

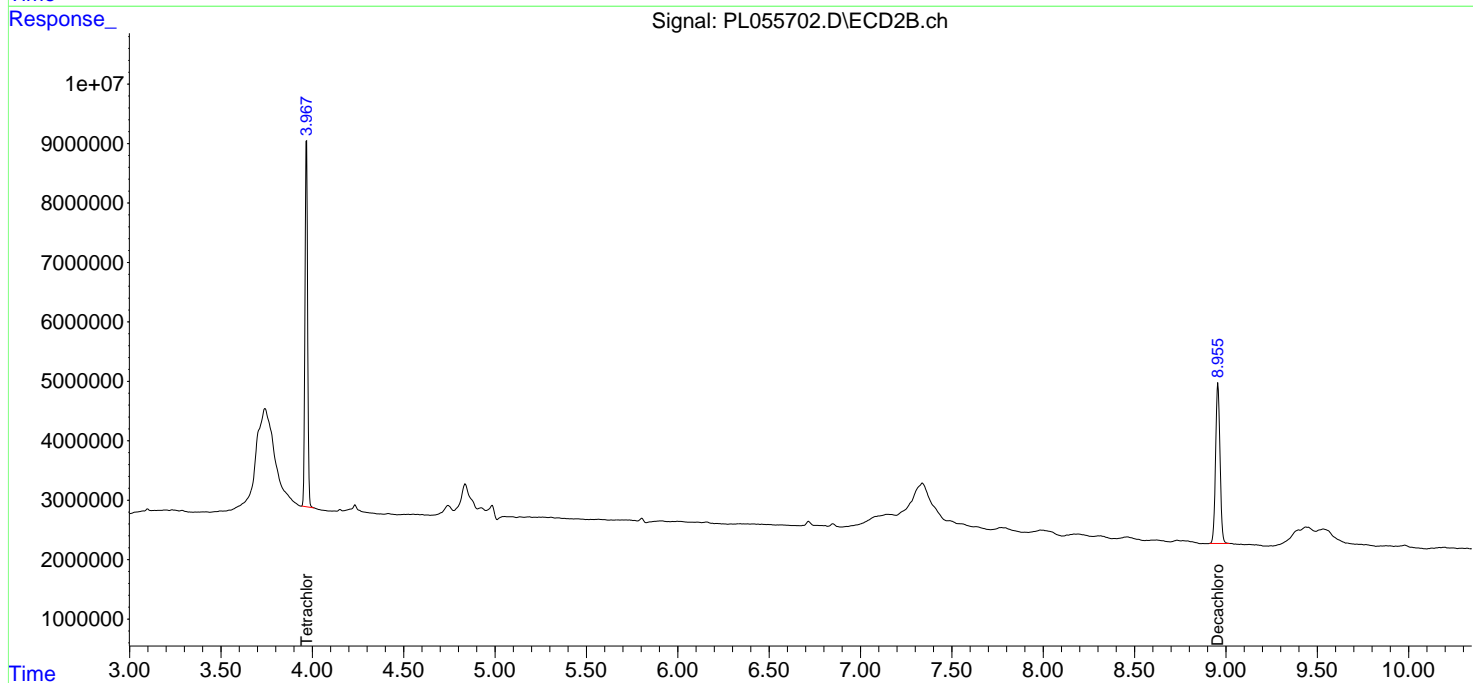
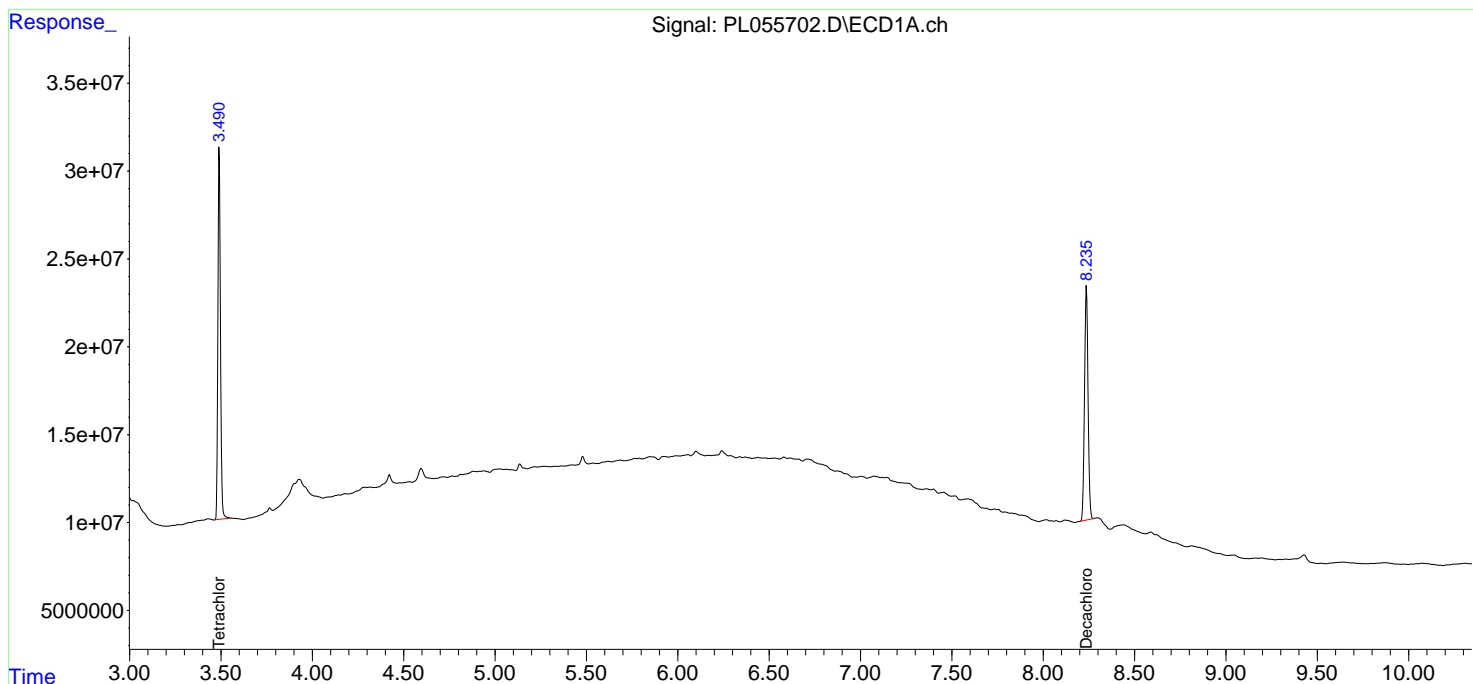
(f)=RT Delta > 1/2 Window (#)=Amounts differ by > 25% (m)=manual int.

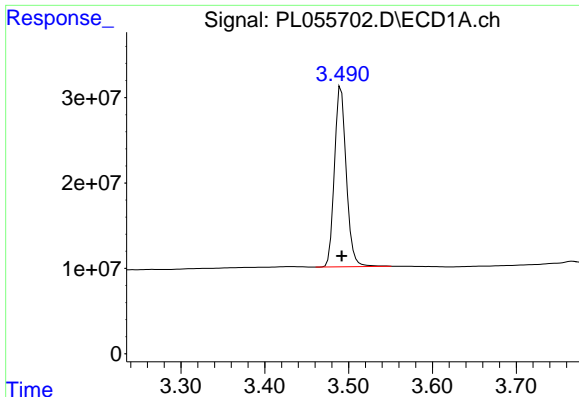
Data Path : Z:\pestpcbsrv\HPCHEM1\ECD_L\Data\PL011320\
 Data File : PL055702.D
 Signal(s) : Signal #1: ECD1A.ch Signal #2: ECD2B.ch
 Acq On : 13 Jan 2020 15:05
 Operator : AJ\MA
 Sample : I.BLK
 Misc :
 ALS Vial : 2 Sample Multiplier: 1

Instrument :
 ECD_L
 ClientSampleId :
 I.BLK

Integration File signal 1: autoint1.e
 Integration File signal 2: autoint2.e
 Quant Time: Jan 13 16:25:10 2020
 Quant Method : Z:\pestpcbsrv\HPCHEM1\ECD_L\methods\PL011020.M
 Quant Title : GC Extractables
 QLast Update : Fri Jan 10 00:58:33 2020
 Response via : Initial Calibration
 Integrator: ChemStation

Volume Inj. : 1 µl
 Signal #1 Phase : ZB-MR2 Signal #2 Phase: ZB-MR1
 Signal #1 Info : 30M x 0.32mm x0.2 Signal #2 Info : 30M x 0.32mm x0.5µm

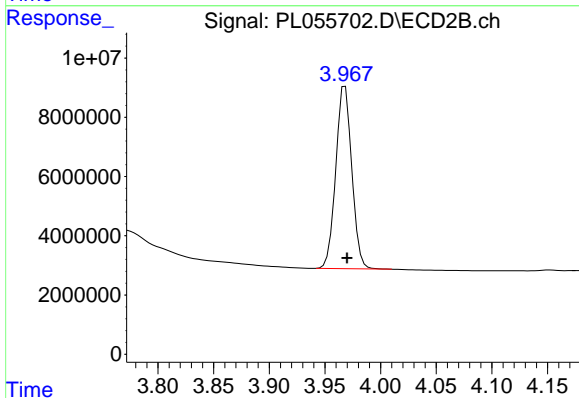




#1 Tetrachloro-m-xylene

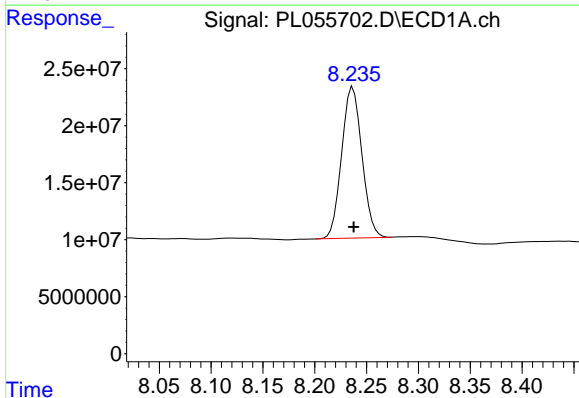
R.T.: 3.491 min
Delta R.T.: 0.000 min
Response: 206731096
Conc: 22.37 ng/ml

Instrument :
ECD_L
ClientSampled :
I.BLK



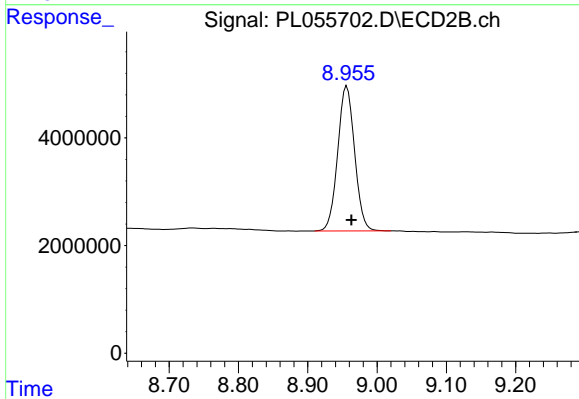
#1 Tetrachloro-m-xylene

R.T.: 3.968 min
Delta R.T.: -0.002 min
Response: 61749207
Conc: 23.31 ng/ml



#28 Decachlorobiphenyl

R.T.: 8.237 min
Delta R.T.: 0.000 min
Response: 180539512
Conc: 20.56 ng/ml



#28 Decachlorobiphenyl

R.T.: 8.957 min
Delta R.T.: -0.007 min
Response: 45583014
Conc: 21.92 ng/ml