

Data Path : Z:\pestpcbsrv\HPCHEM1\ECD\_L\Data\PL011320\  
 Data File : PL055706.D  
 Signal(s) : Signal #1: ECD1A.ch Signal #2: ECD2B.ch  
 Acq On : 13 Jan 2020 16:02  
 Operator : AJ\MA  
 Sample : PB126037BS  
 Misc :  
 ALS Vial : 15 Sample Multiplier: 1

**Instrument :**  
 ECD\_L  
**ClientSampled :**  
 PB126037BS

**Manual Integrations**  
**APPROVED**  
 mohammad  
 1/14/2020 12:10:40 PM

Integration File signal 1: autoint1.e  
 Integration File signal 2: autoint2.e  
 Quant Time: Jan 13 16:25:38 2020  
 Quant Method : Z:\pestpcbsrv\HPCHEM1\ECD\_L\methods\PL011020.M  
 Quant Title : GC Extractables  
 QLast Update : Fri Jan 10 00:58:33 2020  
 Response via : Initial Calibration  
 Integrator: ChemStation

Volume Inj. : 1 µl  
 Signal #1 Phase : ZB-MR2 Signal #2 Phase: ZB-MR1  
 Signal #1 Info : 30M x 0.32mm x0.2 Signal #2 Info : 30M x 0.32mm x0.5µm

Compound	RT#1	RT#2	Resp#1	Resp#2	ng/ml	ng/ml
-----						
System Monitoring Compounds						
1) SA Tetrachlo...	3.491	3.968	198.4E6	62455030	21.475	23.576
28) SA Decachlor...	8.235	8.954	184.9E6	47603113	21.059	22.896
Target Compounds						
2) A alpha-BHC	3.929	4.351	768.2E6	209.9E6	48.602	52.947
3) MA gamma-BHC...	4.212	4.631	739.3E6	193.1E6	50.050	51.948
4) MA Heptachlor	4.513	5.131	728.6E6	166.4E6	50.933	52.438
5) MB Aldrin	4.762	5.431	741.4E6	170.6E6	52.850	54.700
6) B beta-BHC	4.460	4.799	321.9E6	79970717	52.673	52.381
7) B delta-BHC	4.666	5.011	670.2E6	144.0E6	46.888	46.907m
8) B Heptachlo...	5.203	5.811	676.3E6	143.6E6	50.953	48.855
9) A Endosulfan I	5.541	6.164	635.4E6	139.7E6	51.423	52.758
10) B gamma-Chl...	5.428	6.042	689.3E6	149.4E6	51.489m	53.054
11) B alpha-Chl...	5.488	6.114	675.4E6	147.7E6	51.441	52.548
12) B 4,4'-DDE	5.650	6.268	648.7E6	144.0E6	52.170	54.208
13) MA Dieldrin	5.785	6.417	672.9E6	146.9E6	51.330	53.736
14) MA Endrin	6.041	6.633	600.6E6	120.6E6	52.009	53.502
15) B Endosulfa...	6.313	6.840	543.7E6	122.4E6	50.398	50.940
16) A 4,4'-DDD	6.164	6.753	492.2E6	113.4E6	51.932	54.726
17) MA 4,4'-DDT	6.405	7.048	505.5E6	108.8E6	58.862	55.202
18) B Endrin al...	6.481	6.963	457.2E6	102.5E6	48.432	50.486
19) B Endosulfa...	6.693	7.184	514.0E6	115.9E6	52.546	52.095
20) A Methoxychlor	6.947	7.501	227.3E6	54531200	52.939	52.091
21) B Endrin ke...	7.183	7.650	560.3E6	126.4E6	49.430	53.089
22) Mirex	7.373	8.100	371.6E6	84493740	54.276	51.535
-----						

(f)=RT Delta > 1/2 Window (#)=Amounts differ by > 25% (m)=manual int.

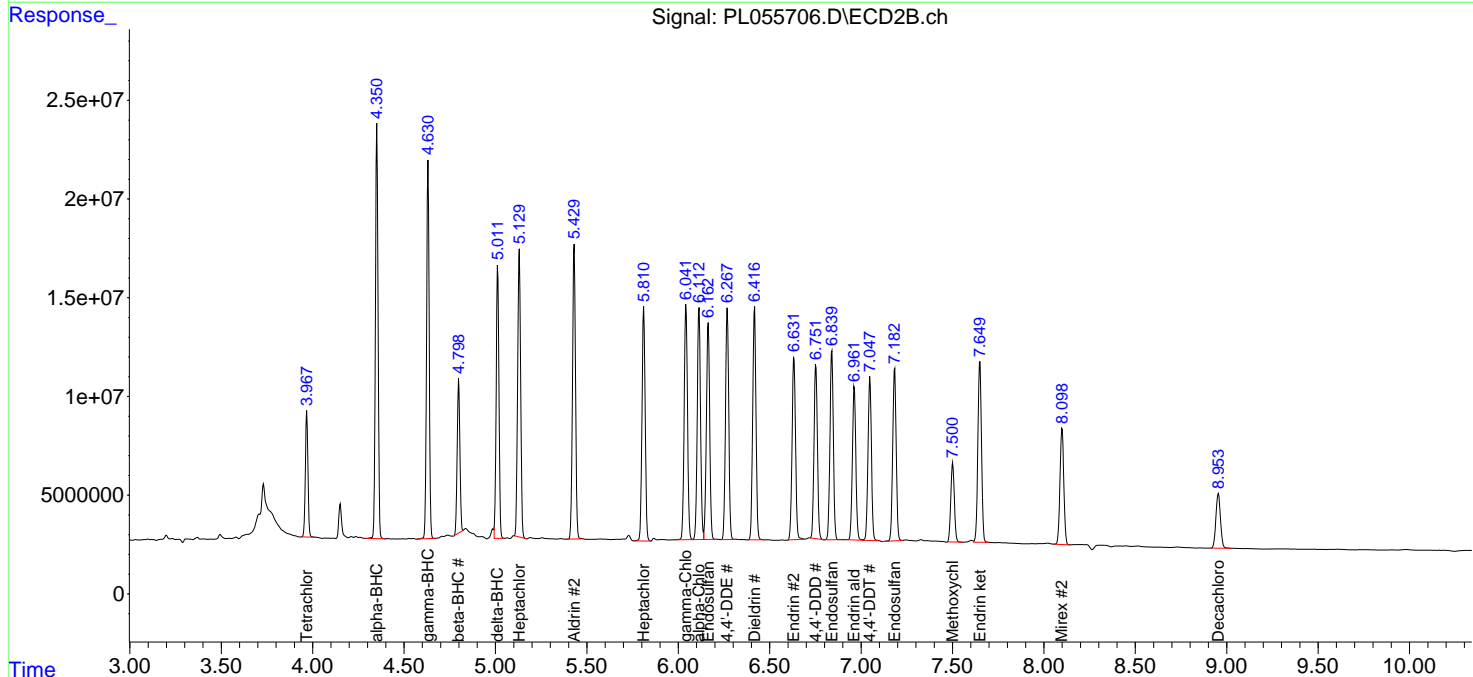
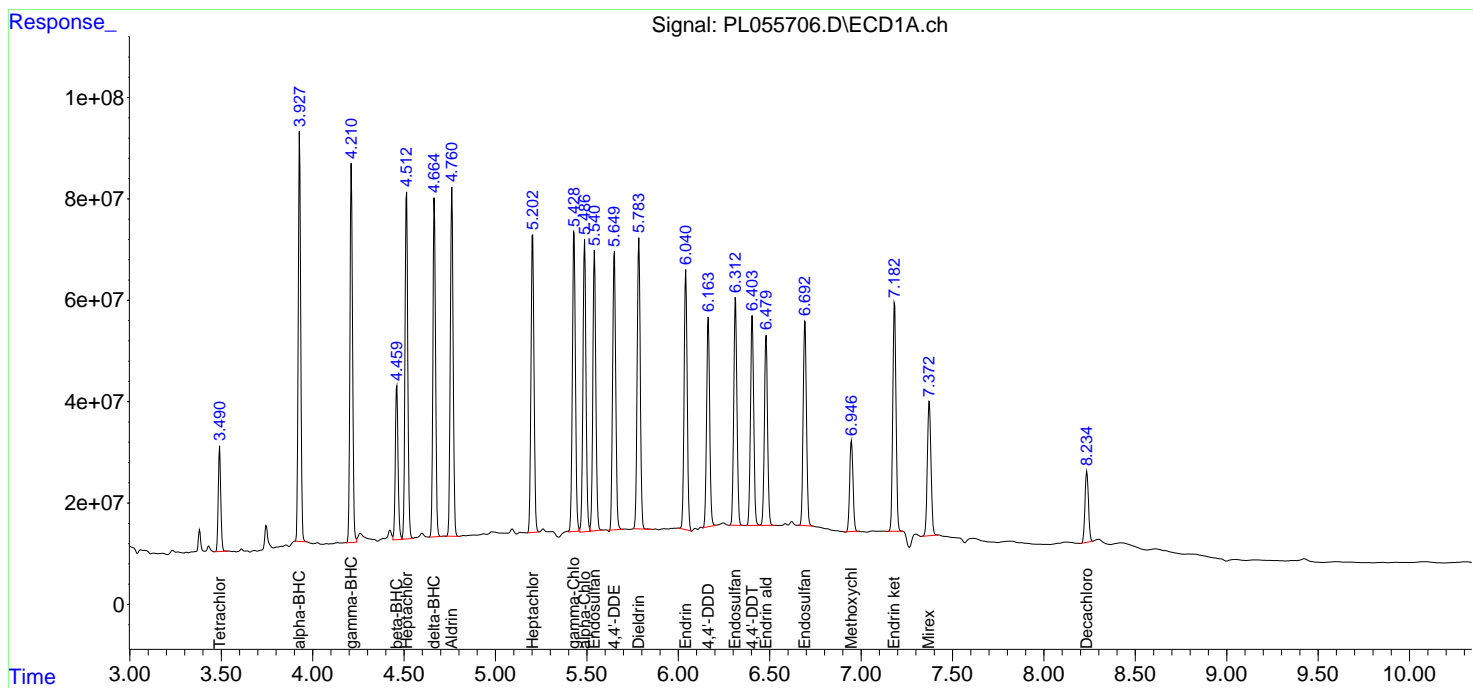
Data Path : Z:\pestpcbsrv\HPCHEM1\ECD\_L\Data\PL011320\  
 Data File : PL055706.D  
 Signal(s) : Signal #1: ECD1A.ch Signal #2: ECD2B.ch  
 Acq On : 13 Jan 2020 16:02  
 Operator : AJ\MA  
 Sample : PB126037BS  
 Misc :  
 ALS Vial : 15 Sample Multiplier: 1

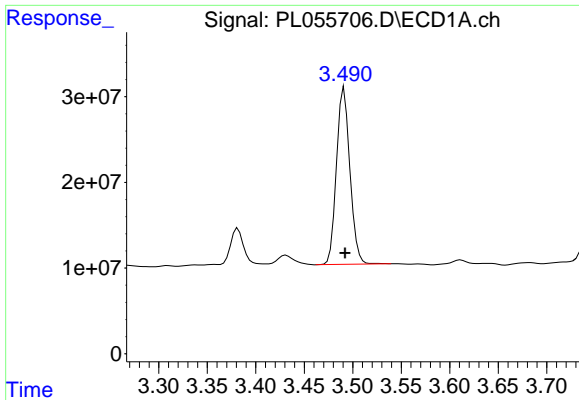
Instrument :  
 ECD\_L  
 ClientSampled :  
 PB126037BS

Manual Integrations  
**APPROVED**  
 mohammad  
 1/14/2020 12:10:40 PM

Integration File signal 1: autoint1.e  
 Integration File signal 2: autoint2.e  
 Quant Time: Jan 13 16:25:38 2020  
 Quant Method : Z:\pestpcbsrv\HPCHEM1\ECD\_L\methods\PL011020.M  
 Quant Title : GC Extractables  
 QLast Update : Fri Jan 10 00:58:33 2020  
 Response via : Initial Calibration  
 Integrator: ChemStation

Volume Inj. : 1 µl  
 Signal #1 Phase : ZB-MR2 Signal #2 Phase: ZB-MR1  
 Signal #1 Info : 30M x 0.32mm x0.2 Signal #2 Info : 30M x 0.32mm x0.5µm

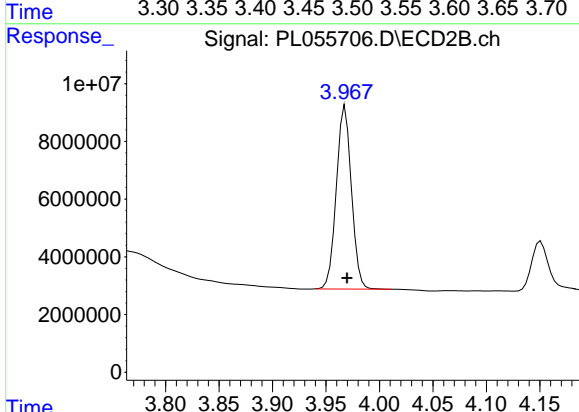




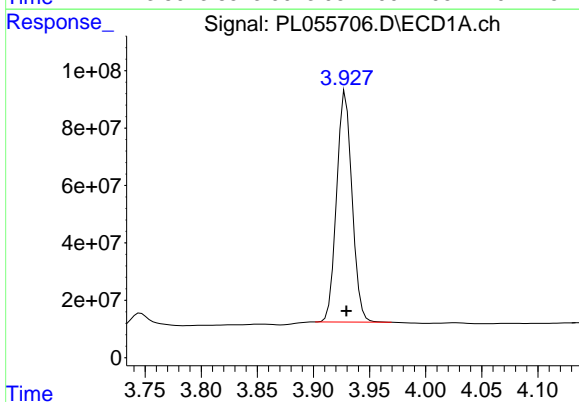
#1 Tetrachloro-m-xylene  
 R.T.: 3.491 min  
 Delta R.T.: 0.000 min  
 Response: 198447459  
 Conc: 21.48 ng/ml

Instrument :  
 ECD\_L  
 ClientSampled :  
 PB126037BS

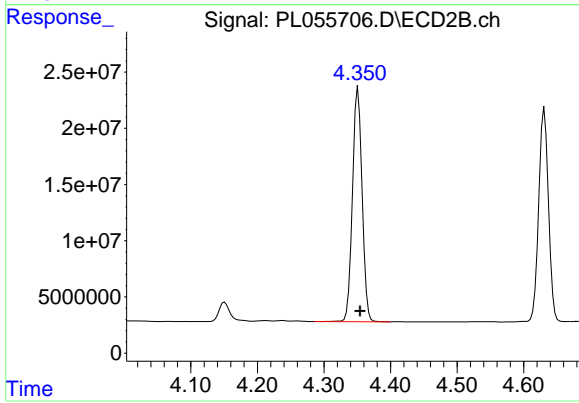
Manual Integrations  
 APPROVED  
 mohammad  
 1/14/2020 12:10:40 PM



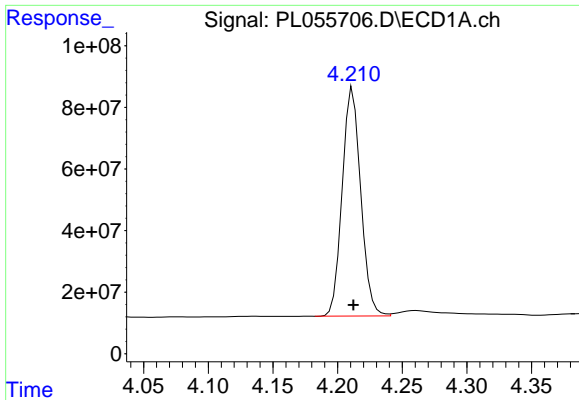
#1 Tetrachloro-m-xylene  
 R.T.: 3.968 min  
 Delta R.T.: -0.002 min  
 Response: 62455030  
 Conc: 23.58 ng/ml



#2 alpha-BHC  
 R.T.: 3.929 min  
 Delta R.T.: 0.000 min  
 Response: 768203017  
 Conc: 48.60 ng/ml



#2 alpha-BHC  
 R.T.: 4.351 min  
 Delta R.T.: -0.003 min  
 Response: 209903862  
 Conc: 52.95 ng/ml



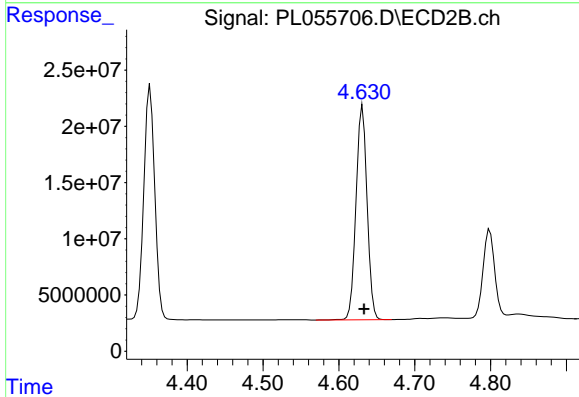
#3 gamma-BHC (Lindane)

R.T.: 4.212 min  
 Delta R.T.: 0.000 min  
 Response: 739320027  
 Conc: 50.05 ng/ml

Instrument :  
 ECD\_L  
 ClientSampled :  
 PB126037BS

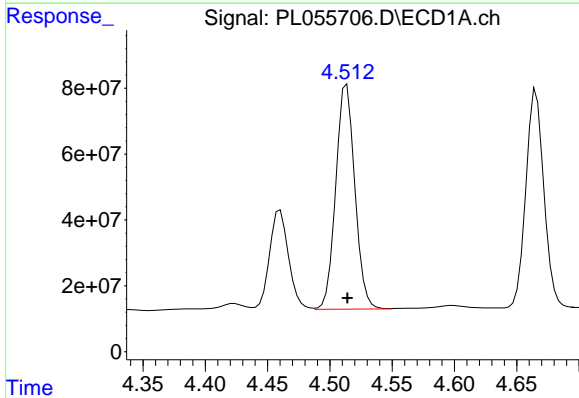
Manual Integrations  
 APPROVED

mohammad  
 1/14/2020 12:10:40 PM



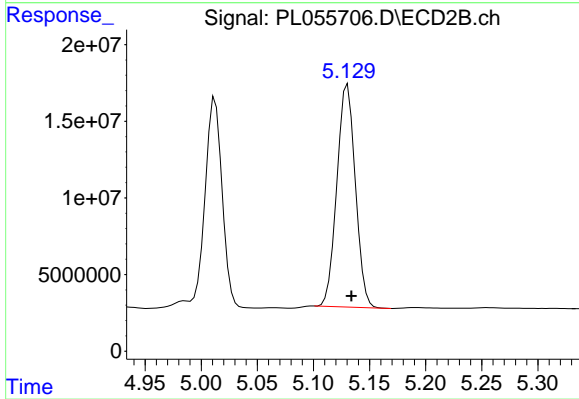
#3 gamma-BHC (Lindane)

R.T.: 4.631 min  
 Delta R.T.: -0.002 min  
 Response: 193132005  
 Conc: 51.95 ng/ml



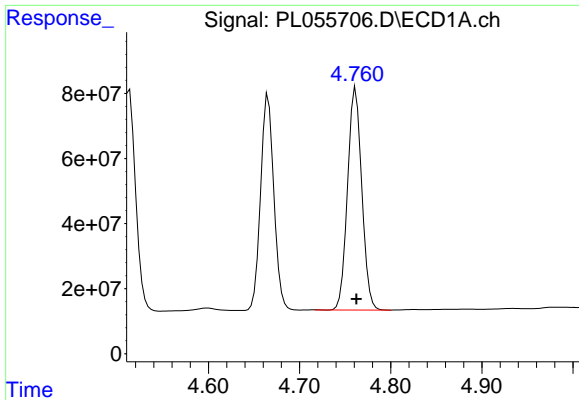
#4 Heptachlor

R.T.: 4.513 min  
 Delta R.T.: 0.000 min  
 Response: 728579176  
 Conc: 50.93 ng/ml



#4 Heptachlor

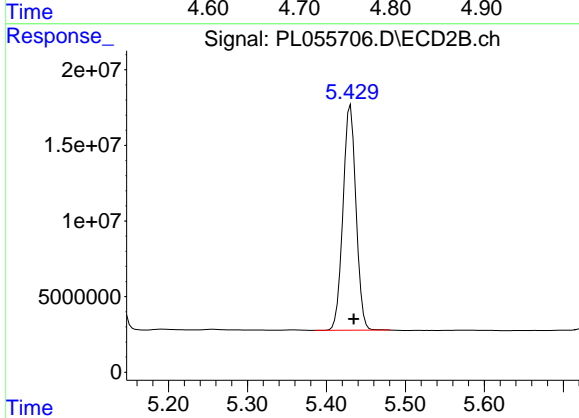
R.T.: 5.131 min  
 Delta R.T.: -0.003 min  
 Response: 166373614  
 Conc: 52.44 ng/ml



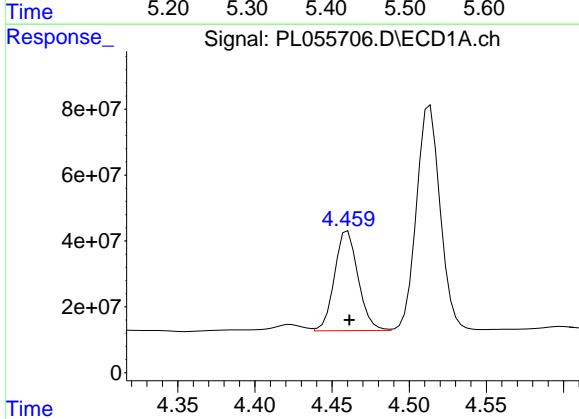
#5 Aldrin  
 R.T.: 4.762 min  
 Delta R.T.: 0.000 min  
 Response: 741426844  
 Conc: 52.85 ng/ml

Instrument :  
 ECD\_L  
 ClientSampled :  
 PB126037BS

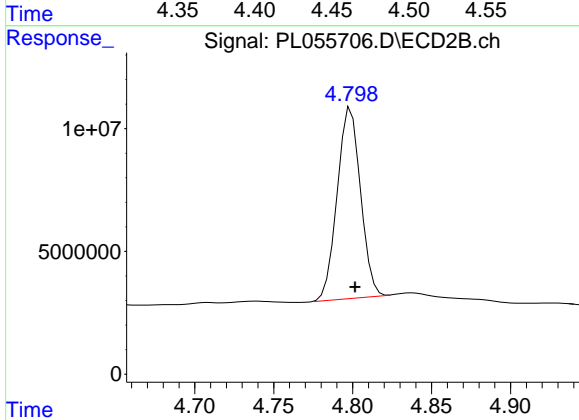
Manual Integrations  
 APPROVED  
 mohammad  
 1/14/2020 12:10:40 PM



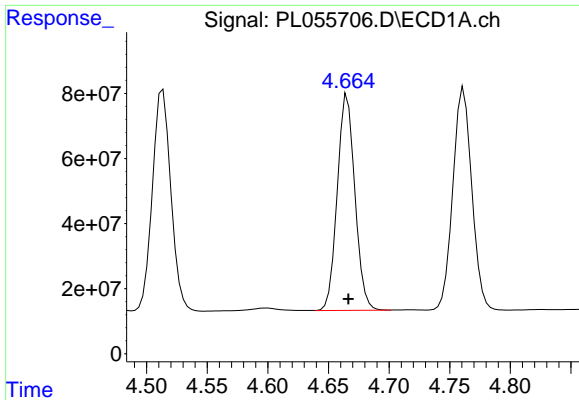
#5 Aldrin  
 R.T.: 5.431 min  
 Delta R.T.: -0.004 min  
 Response: 170603194  
 Conc: 54.70 ng/ml



#6 beta-BHC  
 R.T.: 4.460 min  
 Delta R.T.: -0.001 min  
 Response: 321911433  
 Conc: 52.67 ng/ml



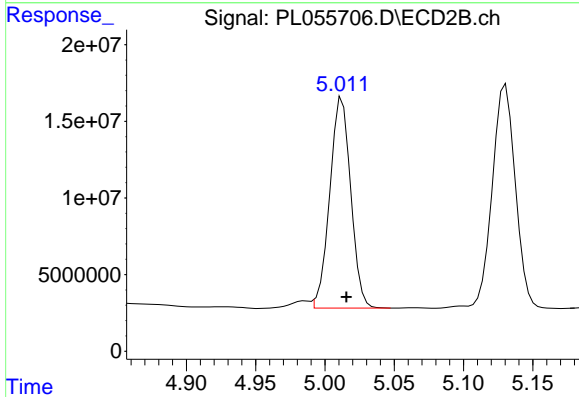
#6 beta-BHC  
 R.T.: 4.799 min  
 Delta R.T.: -0.003 min  
 Response: 79970717  
 Conc: 52.38 ng/ml



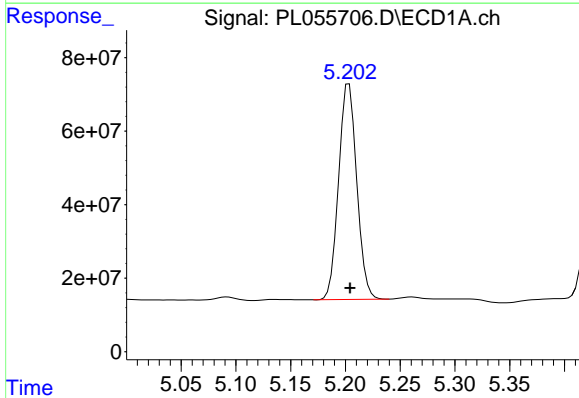
#7 delta-BHC  
 R.T.: 4.666 min  
 Delta R.T.: 0.000 min  
 Response: 670222973  
 Conc: 46.89 ng/ml

**Instrument :**  
 ECD\_L  
**ClientSampled :**  
 PB126037BS

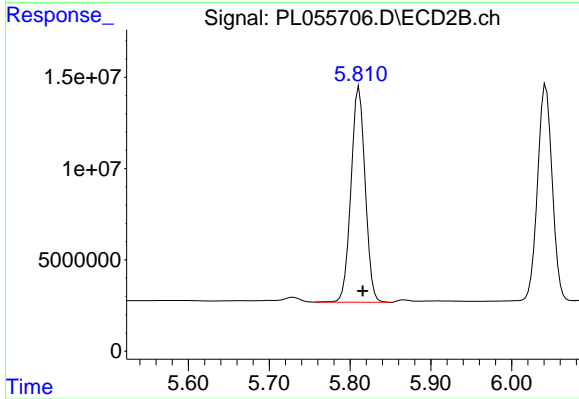
**Manual Integrations**  
**APPROVED**  
 mohammad  
 1/14/2020 12:10:40 PM



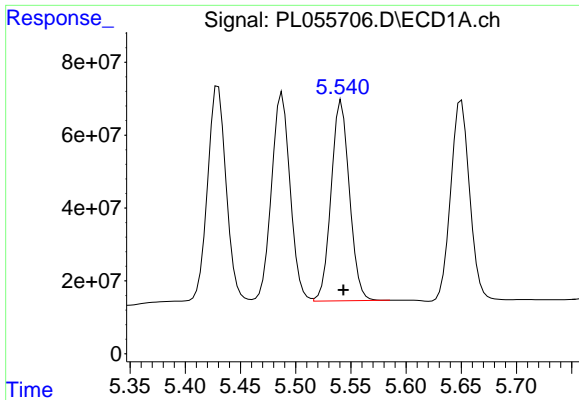
#7 delta-BHC  
 R.T.: 5.011 min  
 Delta R.T.: -0.004 min  
 Response: 143977297  
 Conc: 46.91 ng/ml m



#8 Heptachlor epoxide  
 R.T.: 5.203 min  
 Delta R.T.: 0.000 min  
 Response: 676338105  
 Conc: 50.95 ng/ml



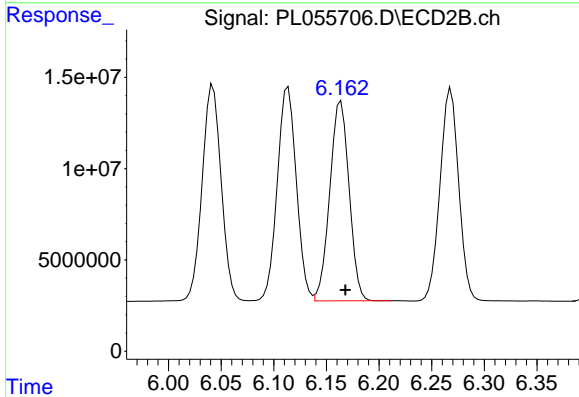
#8 Heptachlor epoxide  
 R.T.: 5.811 min  
 Delta R.T.: -0.004 min  
 Response: 143550168  
 Conc: 48.85 ng/ml



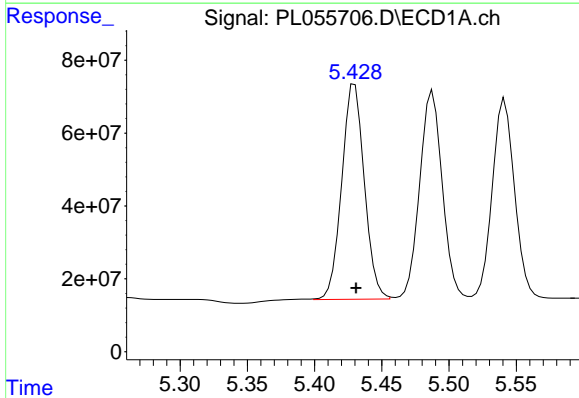
#9 Endosulfan I  
 R.T.: 5.541 min  
 Delta R.T.: -0.002 min  
 Response: 635362238  
 Conc: 51.42 ng/ml

**Instrument :**  
 ECD\_L  
**ClientSampled :**  
 PB126037BS

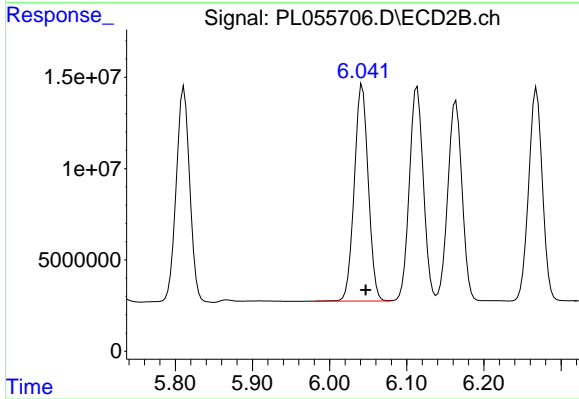
**Manual Integrations**  
**APPROVED**  
 mohammad  
 1/14/2020 12:10:40 PM



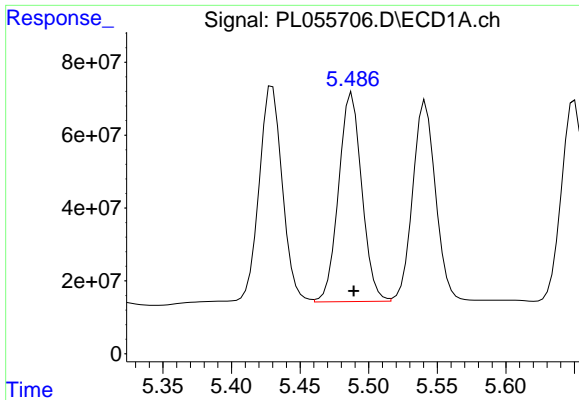
#9 Endosulfan I  
 R.T.: 6.164 min  
 Delta R.T.: -0.004 min  
 Response: 139687117  
 Conc: 52.76 ng/ml



#10 gamma-Chlordane  
 R.T.: 5.428 min  
 Delta R.T.: -0.003 min  
 Response: 689327303  
 Conc: 51.49 ng/ml m



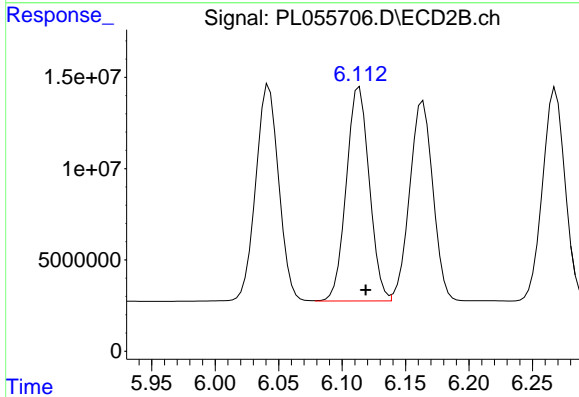
#10 gamma-Chlordane  
 R.T.: 6.042 min  
 Delta R.T.: -0.005 min  
 Response: 149363672  
 Conc: 53.05 ng/ml



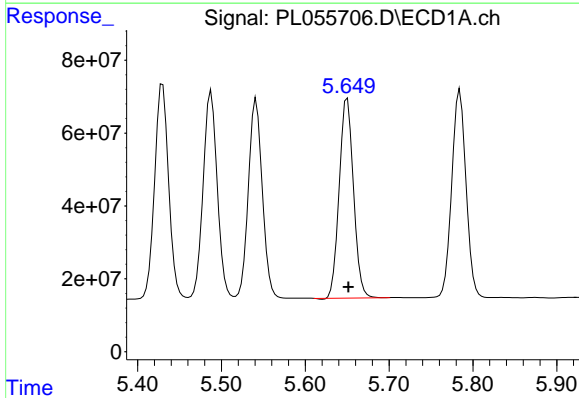
#11 alpha-Chlordane  
R.T.: 5.488 min  
Delta R.T.: -0.001 min  
Response: 675428762  
Conc: 51.44 ng/ml

Instrument :  
ECD\_L  
ClientSampled :  
PB126037BS

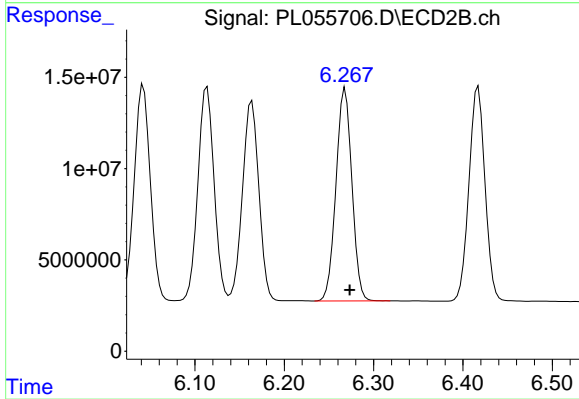
Manual Integrations  
APPROVED  
mohammad  
1/14/2020 12:10:40 PM



#11 alpha-Chlordane  
R.T.: 6.114 min  
Delta R.T.: -0.005 min  
Response: 147699573  
Conc: 52.55 ng/ml

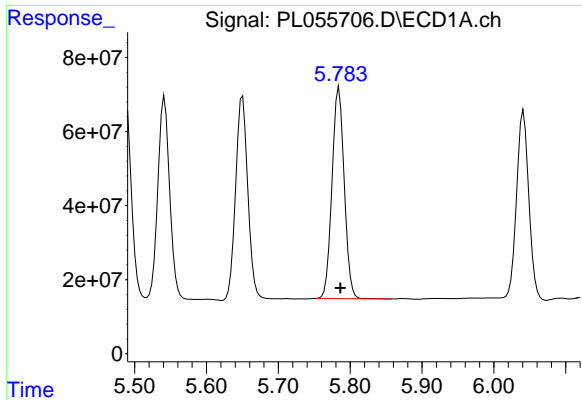


#12 4,4'-DDE  
R.T.: 5.650 min  
Delta R.T.: -0.001 min  
Response: 648695152  
Conc: 52.17 ng/ml



#12 4,4'-DDE  
R.T.: 6.268 min  
Delta R.T.: -0.005 min  
Response: 144022210  
Conc: 54.21 ng/ml





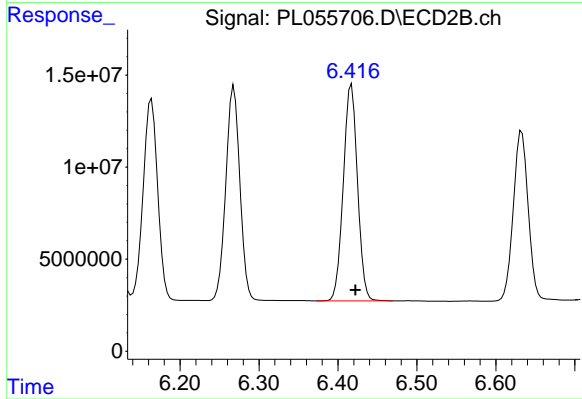
#13 Dieldrin

R.T.: 5.785 min  
 Delta R.T.: -0.002 min  
 Response: 672862093  
 Conc: 51.33 ng/ml

Instrument :  
 ECD\_L  
 ClientSampled :  
 PB126037BS

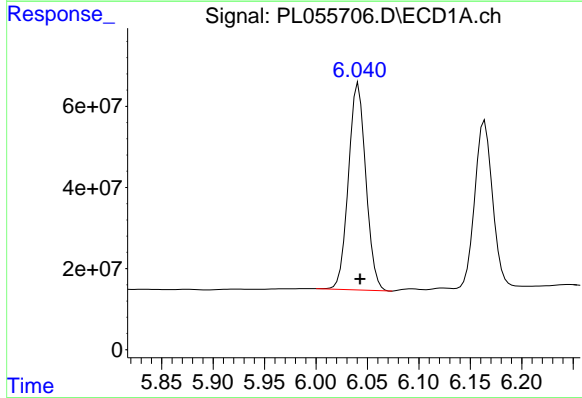
Manual Integrations  
 APPROVED

mohammad  
 1/14/2020 12:10:40 PM



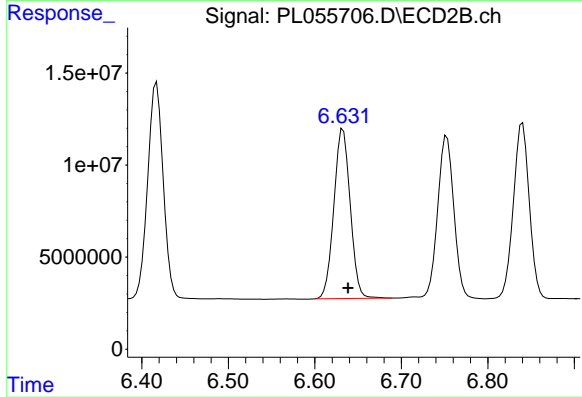
#13 Dieldrin

R.T.: 6.417 min  
 Delta R.T.: -0.005 min  
 Response: 146934936  
 Conc: 53.74 ng/ml



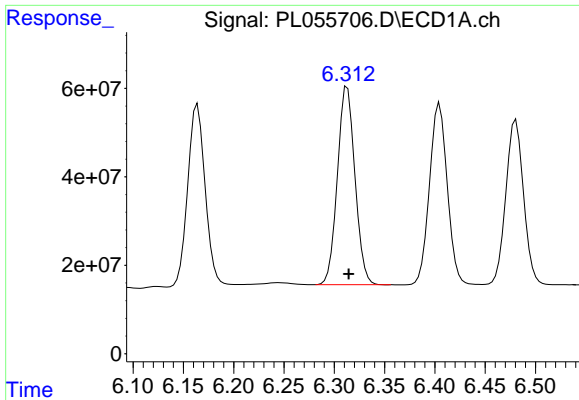
#14 Endrin

R.T.: 6.041 min  
 Delta R.T.: -0.002 min  
 Response: 600592078  
 Conc: 52.01 ng/ml



#14 Endrin

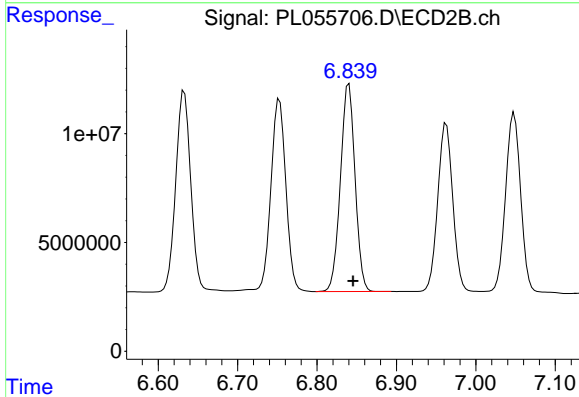
R.T.: 6.633 min  
 Delta R.T.: -0.006 min  
 Response: 120649624  
 Conc: 53.50 ng/ml



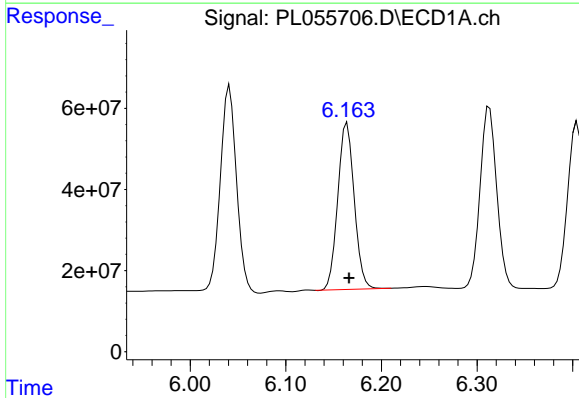
#15 Endosulfan II  
 R.T.: 6.313 min  
 Delta R.T.: -0.002 min  
 Response: 543655709  
 Conc: 50.40 ng/ml

**Instrument :**  
 ECD\_L  
**ClientSampled :**  
 PB126037BS

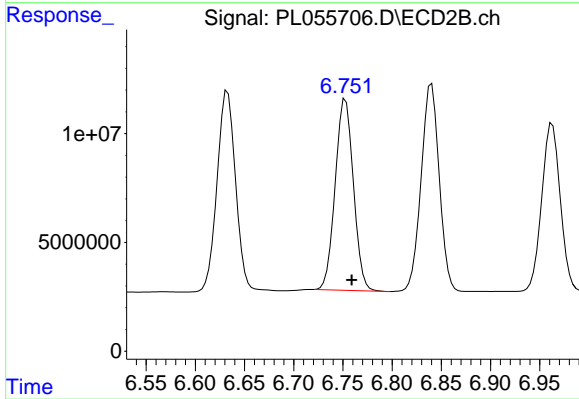
**Manual Integrations**  
**APPROVED**  
 mohammad  
 1/14/2020 12:10:40 PM



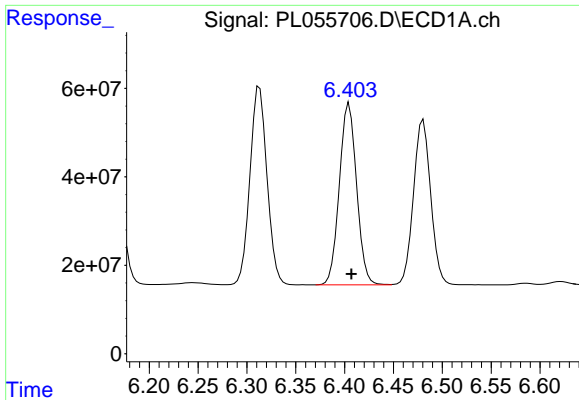
#15 Endosulfan II  
 R.T.: 6.840 min  
 Delta R.T.: -0.005 min  
 Response: 122380526  
 Conc: 50.94 ng/ml



#16 4,4'-DDD  
 R.T.: 6.164 min  
 Delta R.T.: -0.002 min  
 Response: 492163560  
 Conc: 51.93 ng/ml



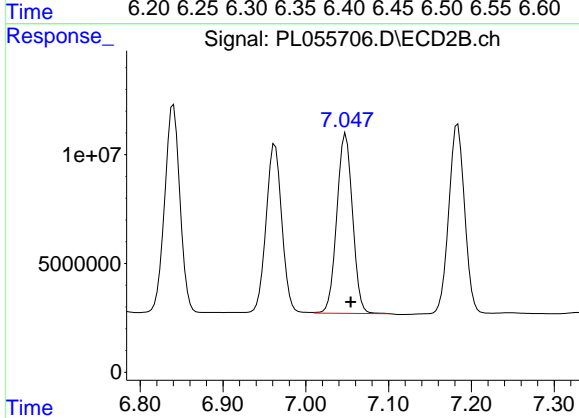
#16 4,4'-DDD  
 R.T.: 6.753 min  
 Delta R.T.: -0.006 min  
 Response: 113401890  
 Conc: 54.73 ng/ml



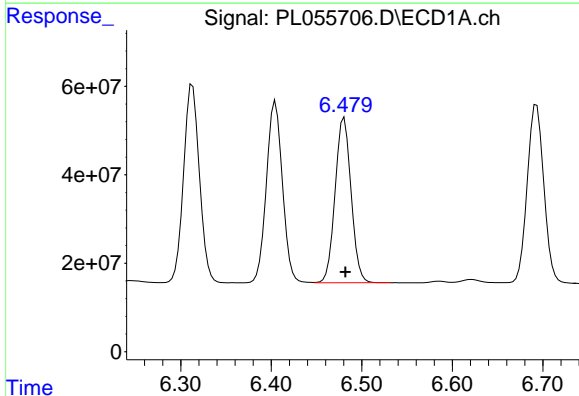
#17 4,4'-DDT  
 R.T.: 6.405 min  
 Delta R.T.: -0.002 min  
 Response: 505503374  
 Conc: 58.86 ng/ml

Instrument :  
 ECD\_L  
 ClientSampled :  
 PB126037BS

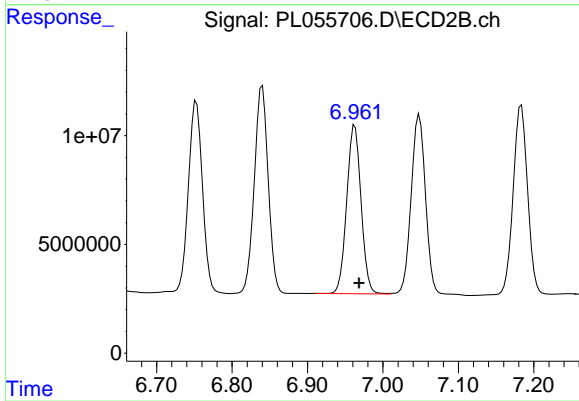
Manual Integrations  
 APPROVED  
 mohammad  
 1/14/2020 12:10:40 PM



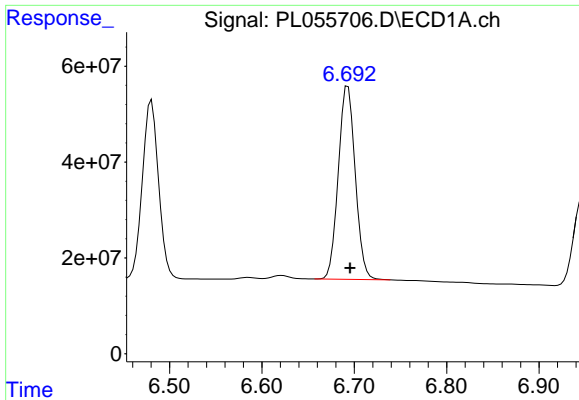
#17 4,4'-DDT  
 R.T.: 7.048 min  
 Delta R.T.: -0.006 min  
 Response: 108842189  
 Conc: 55.20 ng/ml



#18 Endrin aldehyde  
 R.T.: 6.481 min  
 Delta R.T.: -0.001 min  
 Response: 457151744  
 Conc: 48.43 ng/ml



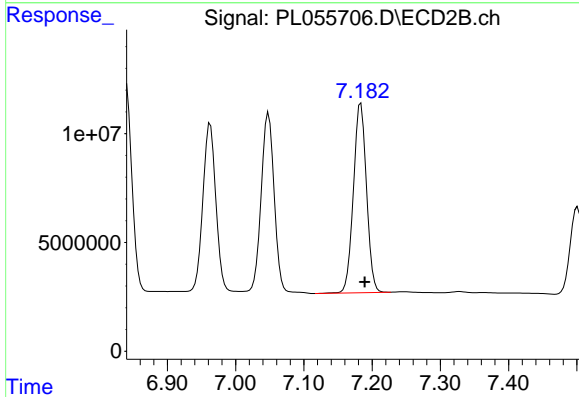
#18 Endrin aldehyde  
 R.T.: 6.963 min  
 Delta R.T.: -0.005 min  
 Response: 102514381  
 Conc: 50.49 ng/ml



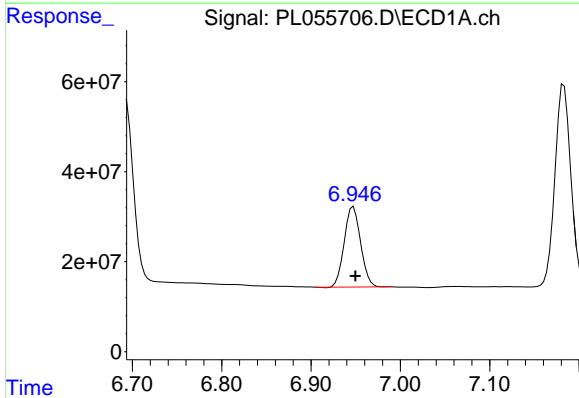
#19 Endosulfan Sulfate  
 R.T.: 6.693 min  
 Delta R.T.: -0.002 min  
 Response: 514017691  
 Conc: 52.55 ng/ml

**Instrument :**  
 ECD\_L  
**ClientSampled :**  
 PB126037BS

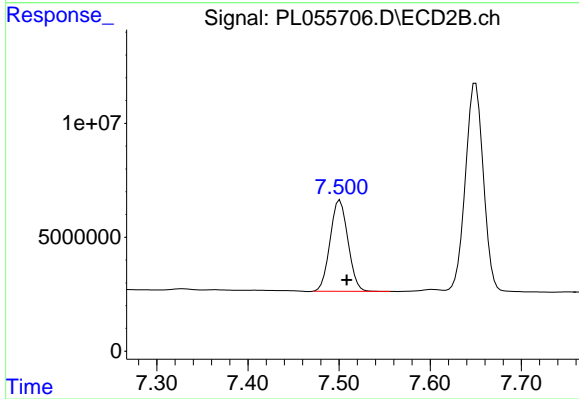
**Manual Integrations**  
**APPROVED**  
 mohammad  
 1/14/2020 12:10:40 PM



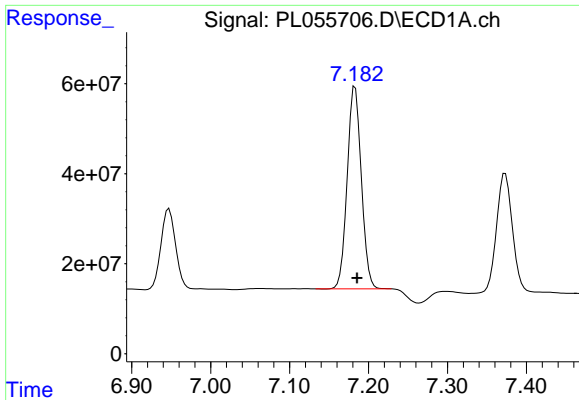
#19 Endosulfan Sulfate  
 R.T.: 7.184 min  
 Delta R.T.: -0.006 min  
 Response: 115902215  
 Conc: 52.10 ng/ml



#20 Methoxychlor  
 R.T.: 6.947 min  
 Delta R.T.: -0.002 min  
 Response: 227261626  
 Conc: 52.94 ng/ml



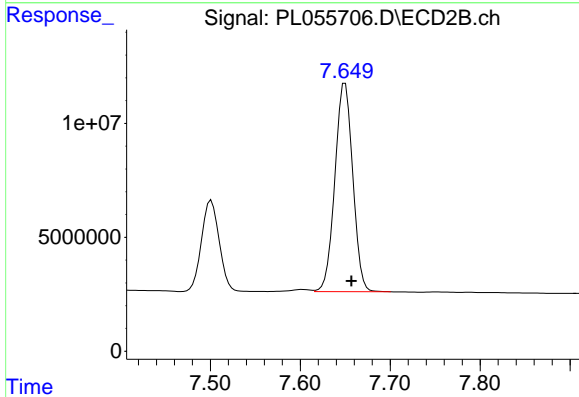
#20 Methoxychlor  
 R.T.: 7.501 min  
 Delta R.T.: -0.007 min  
 Response: 54531200  
 Conc: 52.09 ng/ml



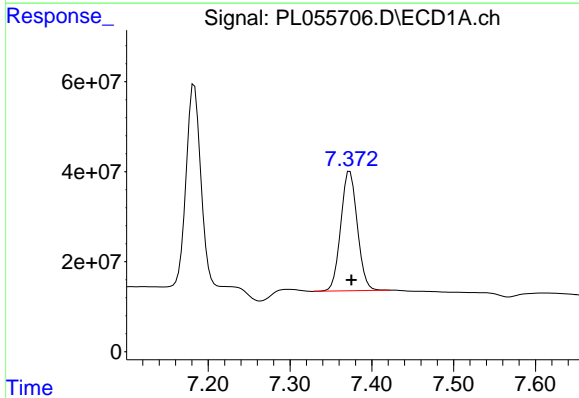
#21 Endrin ketone  
 R.T.: 7.183 min  
 Delta R.T.: -0.003 min  
 Response: 560314809  
 Conc: 49.43 ng/ml

Instrument :  
 ECD\_L  
 ClientSampled :  
 PB126037BS

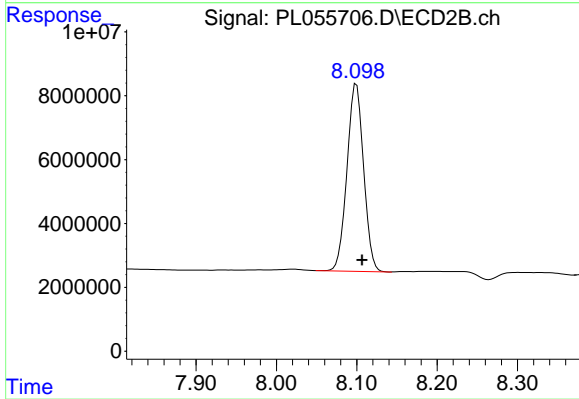
Manual Integrations  
 APPROVED  
 mohammad  
 1/14/2020 12:10:40 PM



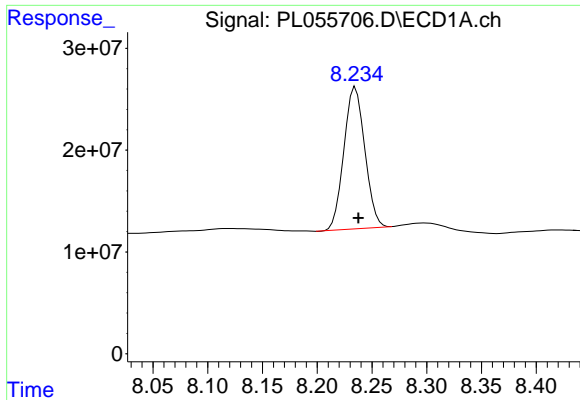
#21 Endrin ketone  
 R.T.: 7.650 min  
 Delta R.T.: -0.007 min  
 Response: 126408419  
 Conc: 53.09 ng/ml



#22 Mirex  
 R.T.: 7.373 min  
 Delta R.T.: -0.002 min  
 Response: 371638191  
 Conc: 54.28 ng/ml



#22 Mirex  
 R.T.: 8.100 min  
 Delta R.T.: -0.007 min  
 Response: 84493740  
 Conc: 51.54 ng/ml



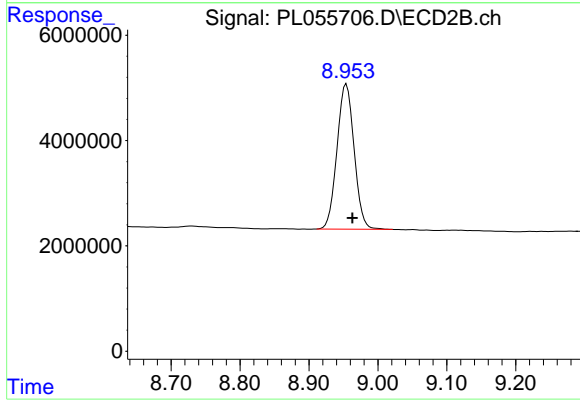
#28 Decachlorobiphenyl

R.T.: 8.235 min  
Delta R.T.: -0.003 min  
Response: 184931609  
Conc: 21.06 ng/ml

Instrument :  
ECD\_L  
ClientSampleId :  
PB126037BS

Manual Integrations  
APPROVED

mohammad  
1/14/2020 12:10:40 PM



#28 Decachlorobiphenyl

R.T.: 8.954 min  
Delta R.T.: -0.009 min  
Response: 47603113  
Conc: 22.90 ng/ml