

Data Path : Z:\pestpcbsrv\HPCHEM1\ECD_L\Data\PL011320\
 Data File : PL055714.D
 Signal(s) : Signal #1: ECD1A.ch Signal #2: ECD2B.ch
 Acq On : 13 Jan 2020 17:55
 Operator : AJ\MA
 Sample : I.BLK
 Misc :
 ALS Vial : 2 Sample Multiplier: 1

Instrument :
 ECD_L
 ClientSampleId :
 I.BLK

Integration File signal 1: autoint1.e
 Integration File signal 2: autoint2.e
 Quant Time: Jan 14 08:40:12 2020
 Quant Method : Z:\pestpcbsrv\HPCHEM1\ECD_L\methods\PL011020.M
 Quant Title : GC Extractables
 QLast Update : Fri Jan 10 00:58:33 2020
 Response via : Initial Calibration
 Integrator: ChemStation

Volume Inj. : 1 µl
 Signal #1 Phase : ZB-MR2 Signal #2 Phase: ZB-MR1
 Signal #1 Info : 30M x 0.32mm x0.2 Signal #2 Info : 30M x 0.32mm x0.5µm

Compound	RT#1	RT#2	Resp#1	Resp#2	ng/ml	ng/ml

System Monitoring Compounds						
1) SA Tetrachlo...	3.491	3.969	207.8E6	62082192	22.486	23.435
28) SA Decachlor...	8.235	8.955	193.1E6	47011499	21.991	22.612

Target Compounds

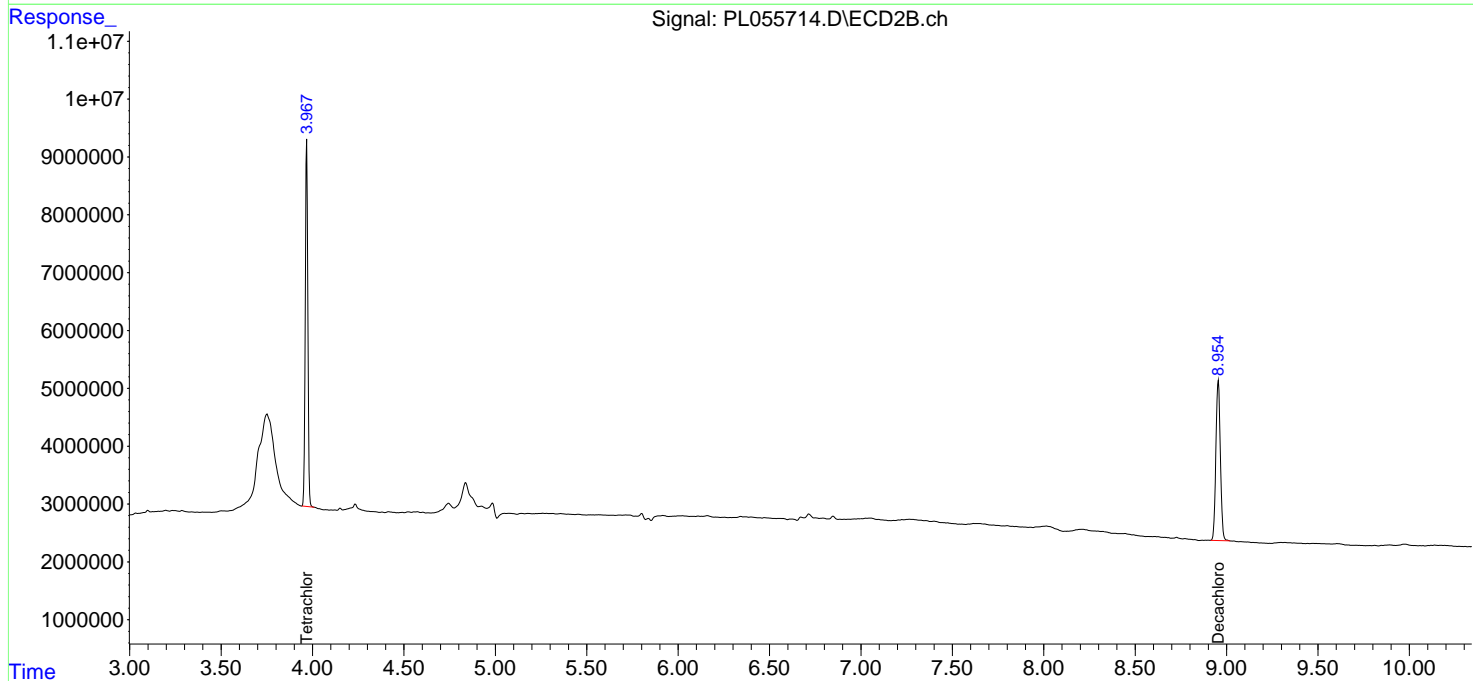
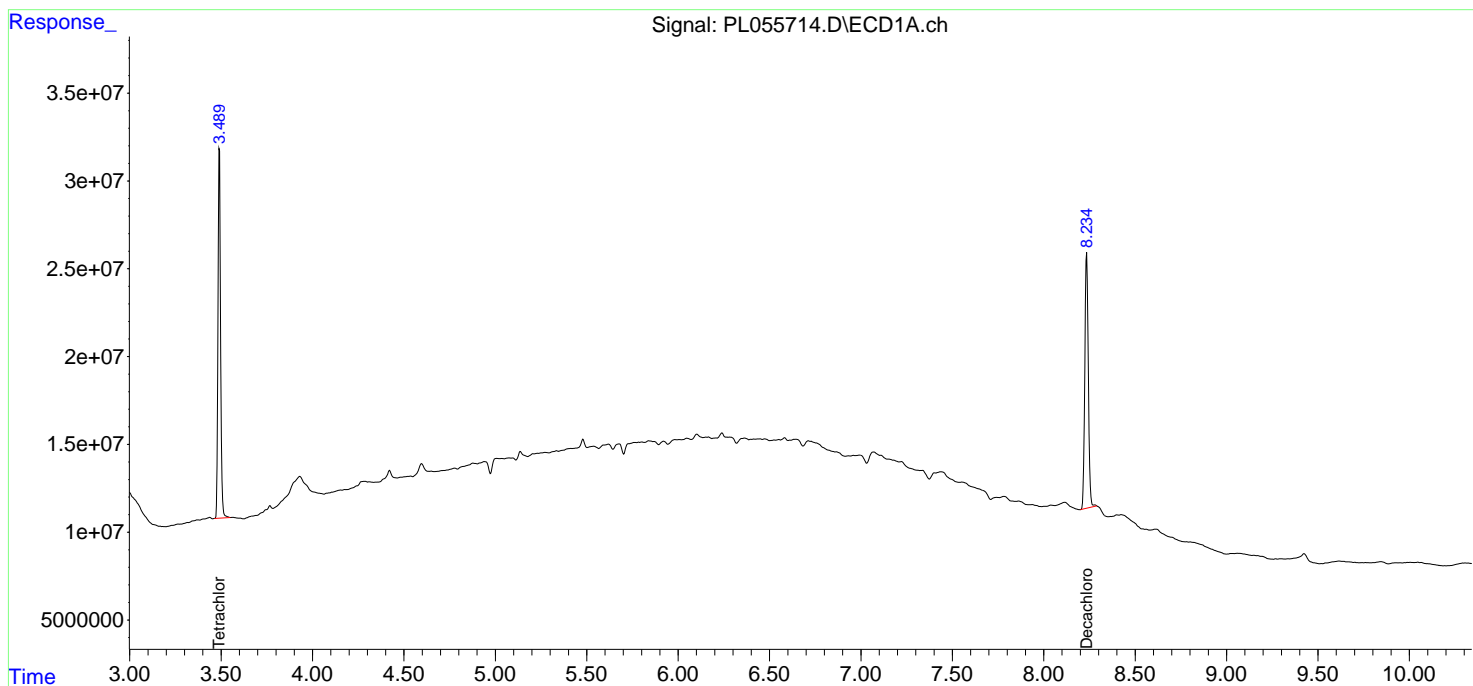
(f)=RT Delta > 1/2 Window (#)=Amounts differ by > 25% (m)=manual int.

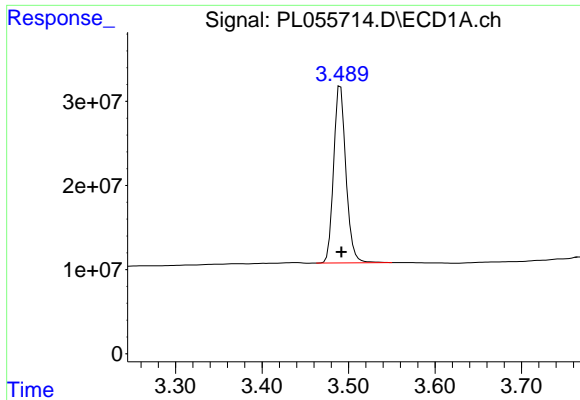
Data Path : Z:\pestpcbsrv\HPCHEM1\ECD_L\Data\PL011320\
 Data File : PL055714.D
 Signal(s) : Signal #1: ECD1A.ch Signal #2: ECD2B.ch
 Acq On : 13 Jan 2020 17:55
 Operator : AJ\MA
 Sample : I.BLK
 Misc :
 ALS Vial : 2 Sample Multiplier: 1

Instrument :
 ECD_L
 ClientSampleId :
 I.BLK

Integration File signal 1: autoint1.e
 Integration File signal 2: autoint2.e
 Quant Time: Jan 14 08:40:12 2020
 Quant Method : Z:\pestpcbsrv\HPCHEM1\ECD_L\methods\PL011020.M
 Quant Title : GC Extractables
 QLast Update : Fri Jan 10 00:58:33 2020
 Response via : Initial Calibration
 Integrator: ChemStation

Volume Inj. : 1 µl
 Signal #1 Phase : ZB-MR2 Signal #2 Phase: ZB-MR1
 Signal #1 Info : 30M x 0.32mm x0.2 Signal #2 Info : 30M x 0.32mm x0.5µm

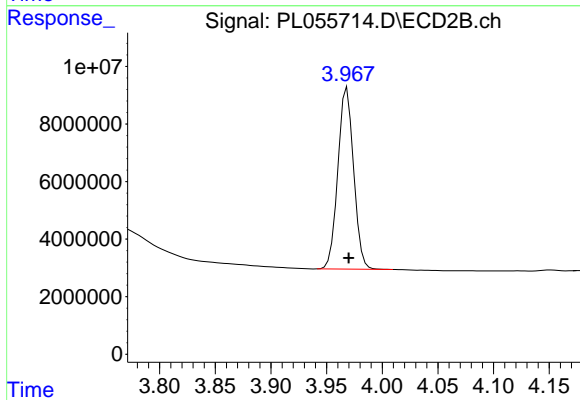




#1 Tetrachloro-m-xylene

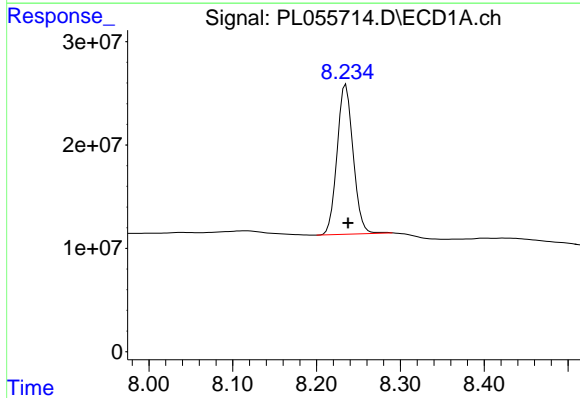
R.T.: 3.491 min
 Delta R.T.: -0.001 min
 Response: 207789067
 Conc: 22.49 ng/ml

Instrument :
 ECD_L
 ClientSampled :
 I.BLK



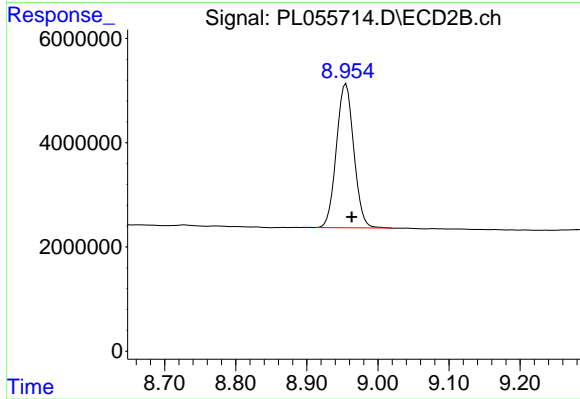
#1 Tetrachloro-m-xylene

R.T.: 3.969 min
 Delta R.T.: -0.001 min
 Response: 62082192
 Conc: 23.43 ng/ml



#28 Decachlorobiphenyl

R.T.: 8.235 min
 Delta R.T.: -0.003 min
 Response: 193120140
 Conc: 21.99 ng/ml



#28 Decachlorobiphenyl

R.T.: 8.955 min
 Delta R.T.: -0.008 min
 Response: 47011499
 Conc: 22.61 ng/ml