

Data Path : Z:\pestpcbsrv\HPCHEM1\ECD\_L\Data\PL011320\  
 Data File : PL055719.D  
 Signal(s) : Signal #1: ECD1A.ch Signal #2: ECD2B.ch  
 Acq On : 13 Jan 2020 19:06  
 Operator : AJ\MA  
 Sample : L1106-06MSD  
 Misc :  
 ALS Vial : 24 Sample Multiplier: 1

**Instrument :**  
 ECD\_L  
**ClientSampleId :**  
 CIY1-SB-01-0-52MSD

**Manual Integrations**  
**APPROVED**  
 mohammad  
 1/14/2020 12:10:59 PM

Integration File signal 1: autoint1.e  
 Integration File signal 2: autoint2.e  
 Quant Time: Jan 14 08:41:02 2020  
 Quant Method : Z:\pestpcbsrv\HPCHEM1\ECD\_L\methods\PL011020.M  
 Quant Title : GC Extractables  
 QLast Update : Fri Jan 10 00:58:33 2020  
 Response via : Initial Calibration  
 Integrator: ChemStation

Volume Inj. : 1 µl  
 Signal #1 Phase : ZB-MR2 Signal #2 Phase: ZB-MR1  
 Signal #1 Info : 30M x 0.32mm x0.2 Signal #2 Info : 30M x 0.32mm x0.5µm

	Compound	RT#1	RT#2	Resp#1	Resp#2	ng/ml	ng/ml
-----							
System Monitoring Compounds							
1)	SA Tetrachlo...	3.492	3.969	193.9E6	56663364	20.981	21.389
28)	SA Decachlor...	8.235	8.956	150.8E6	35041709	17.177	16.855
Target Compounds							
2)	A alpha-BHC	3.929	4.353	785.8E6	222.7E6	49.719	56.171
3)	MA gamma-BHC...	4.212	4.633	755.6E6	208.2E6	51.151	56.007
4)	MA Heptachlor	4.512	5.132	766.8E6	184.6E6	53.603m	58.189
5)	MB Aldrin	4.762	5.432	727.6E6	179.5E6	51.863	57.553
6)	B beta-BHC	4.460	4.801	319.4E6	76272132	52.268m	49.958
7)	B delta-BHC	4.666	5.014	707.6E6	150.2E6	49.500	48.943
8)	B Heptachlo...	5.203	5.813	686.9E6	146.8E6	51.750	49.959
9)	A Endosulfan I	5.543	6.165	551.7E6	134.1E6	44.649	50.631
10)	B gamma-Chl...	5.430	6.044	746.6E6	156.8E6	55.765	55.707
11)	B alpha-Chl...	5.488	6.115	677.0E6	152.9E6	51.561	54.414
12)	B 4,4'-DDE	5.650	6.269	681.4E6	151.9E6	54.803	57.164
13)	MA Dieldrin	5.785	6.419	702.9E6	151.8E6	53.621	55.501
14)	MA Endrin	6.042	6.635	617.2E6	121.5E6	53.443	53.888
15)	B Endosulfa...	6.316	6.845	866.1E6	209.5E6	80.284	87.202
16)	A 4,4'-DDD	6.165	6.755	497.4E6	136.8E6	52.488	66.011 #
17)	MA 4,4'-DDT	6.405	7.050	563.9E6	130.8E6	65.663	66.338
18)	B Endrin al...	6.481	6.964	455.1E6	105.6E6	48.216	52.005
19)	B Endosulfa...	6.693	7.185	549.5E6	110.1E6	56.173	49.483
20)	A Methoxychlor	6.946	7.503	339.9E6	59048791	79.186	56.406 #
21)	B Endrin ke...	7.183	7.652	535.8E6	135.0E6	47.268	56.679
22)	Mirex	7.374	8.100	353.8E6	82603075	51.676	50.382

(f)=RT Delta > 1/2 Window (#)=Amounts differ by > 25% (m)=manual int.

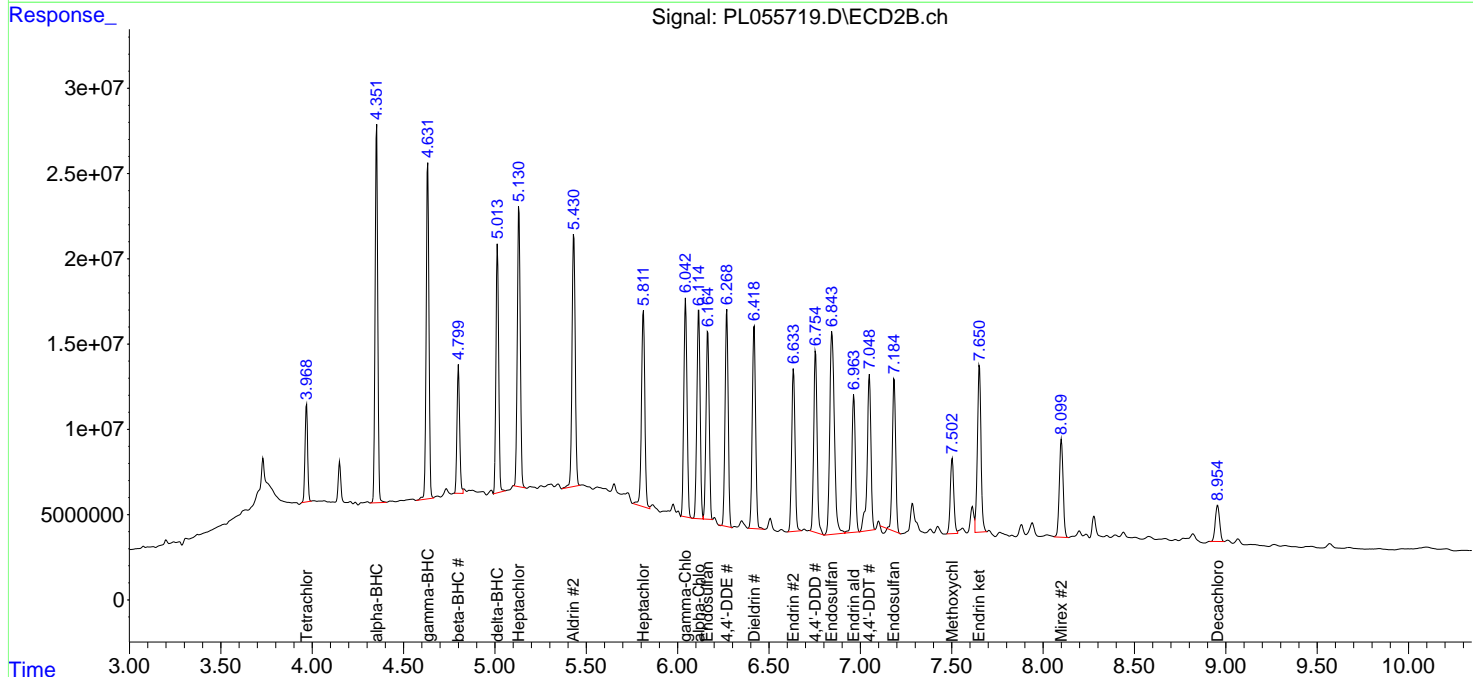
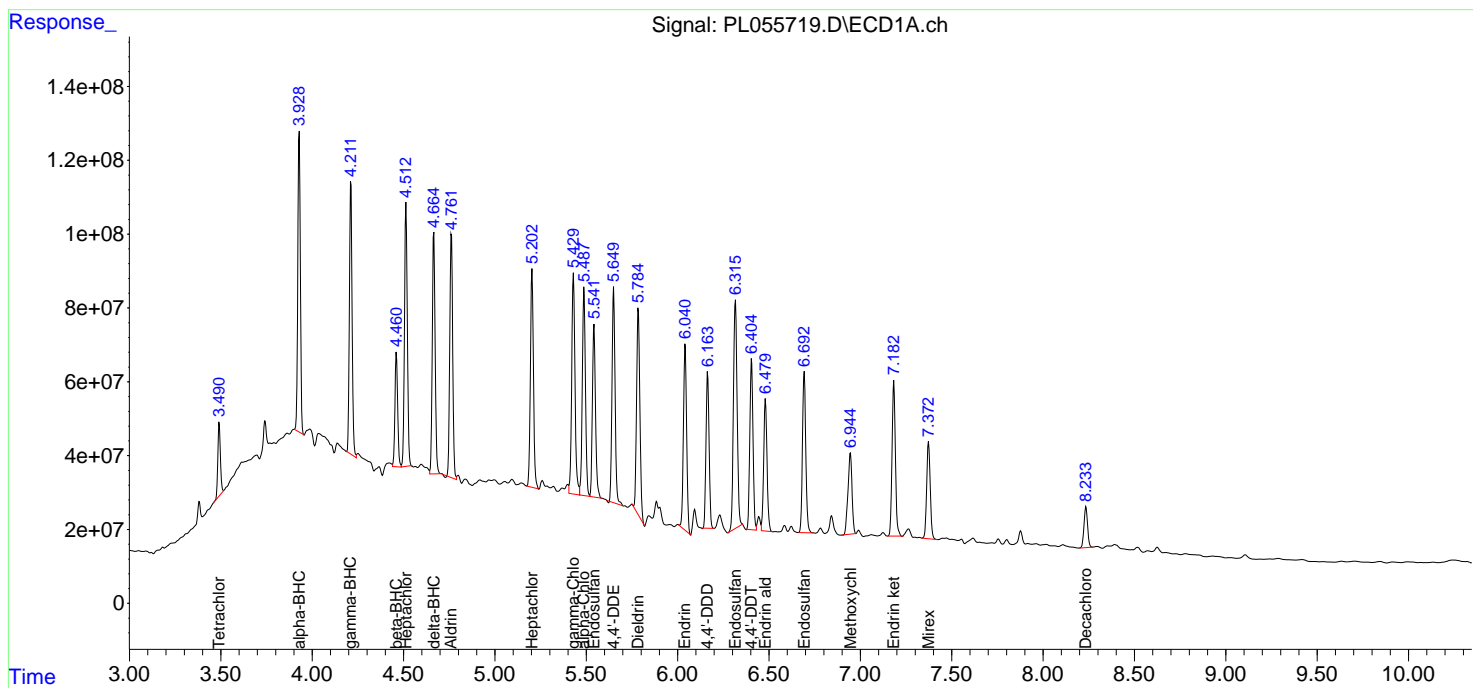
Data Path : Z:\pestpcbsrv\HPCHEM1\ECD\_L\Data\PL011320\  
 Data File : PL055719.D  
 Signal(s) : Signal #1: ECD1A.ch Signal #2: ECD2B.ch  
 Acq On : 13 Jan 2020 19:06  
 Operator : AJ\MA  
 Sample : L1106-06MSD  
 Misc :  
 ALS Vial : 24 Sample Multiplier: 1

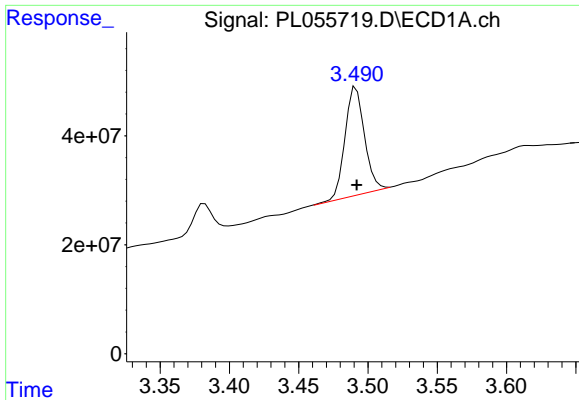
Instrument :  
 ECD\_L  
 Client Sampled :  
 CIY1-SB-01-0-52MSD

Manual Integrations  
**APPROVED**  
 mohammad  
 1/14/2020 12:10:59 PM

Integration File signal 1: autoint1.e  
 Integration File signal 2: autoint2.e  
 Quant Time: Jan 14 08:41:02 2020  
 Quant Method : Z:\pestpcbsrv\HPCHEM1\ECD\_L\methods\PL011020.M  
 Quant Title : GC Extractables  
 QLast Update : Fri Jan 10 00:58:33 2020  
 Response via : Initial Calibration  
 Integrator: ChemStation

Volume Inj. : 1 µl  
 Signal #1 Phase : ZB-MR2 Signal #2 Phase: ZB-MR1  
 Signal #1 Info : 30M x 0.32mm x0.2 Signal #2 Info : 30M x 0.32mm x0.5µm

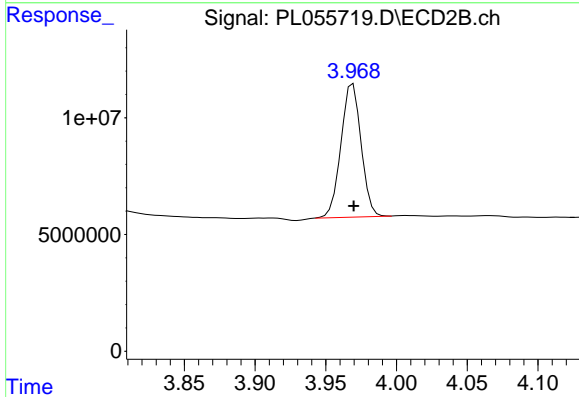




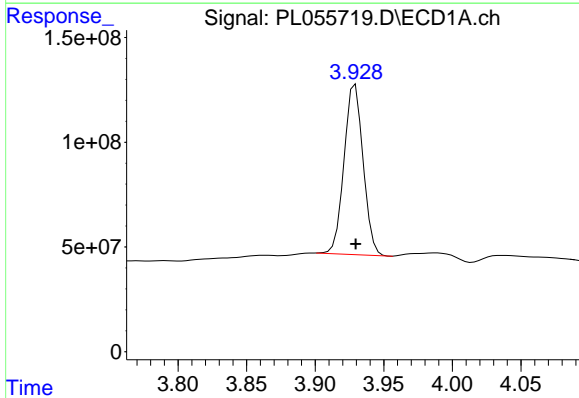
#1 Tetrachloro-m-xylene  
 R.T.: 3.492 min  
 Delta R.T.: 0.000 min  
 Response: 193882006  
 Conc: 20.98 ng/ml

Instrument :  
 ECD\_L  
 ClientSampleId :  
 CIY1-SB-01-0-52MSD

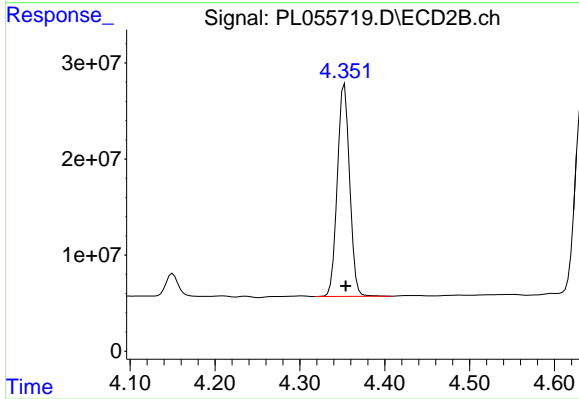
Manual Integrations  
 APPROVED  
 mohammad  
 1/14/2020 12:10:59 PM



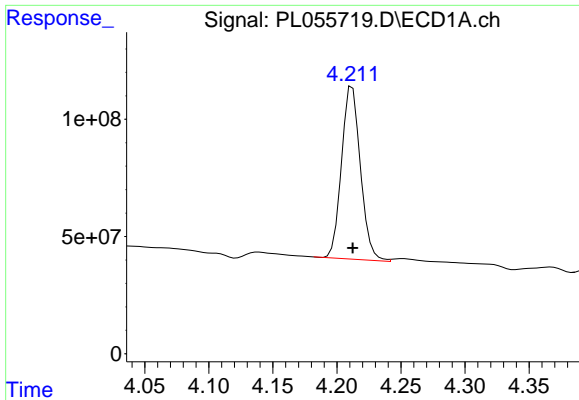
#1 Tetrachloro-m-xylene  
 R.T.: 3.969 min  
 Delta R.T.: 0.000 min  
 Response: 56663364  
 Conc: 21.39 ng/ml



#2 alpha-BHC  
 R.T.: 3.929 min  
 Delta R.T.: 0.000 min  
 Response: 785849477  
 Conc: 49.72 ng/ml



#2 alpha-BHC  
 R.T.: 4.353 min  
 Delta R.T.: -0.001 min  
 Response: 222683190  
 Conc: 56.17 ng/ml



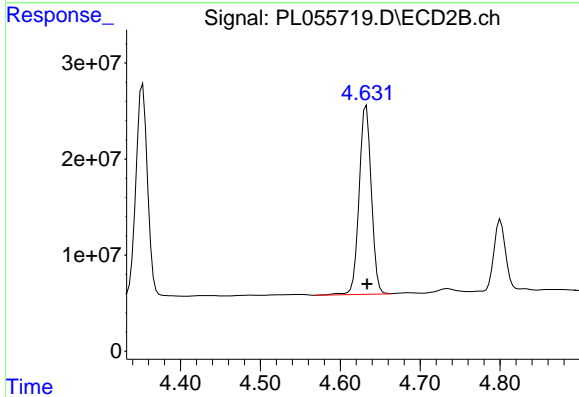
#3 gamma-BHC (Lindane)

R.T.: 4.212 min  
 Delta R.T.: 0.000 min  
 Response: 755586026  
 Conc: 51.15 ng/ml

Instrument :  
 ECD\_L  
 ClientSampleId :  
 CIY1-SB-01-0-52MSD

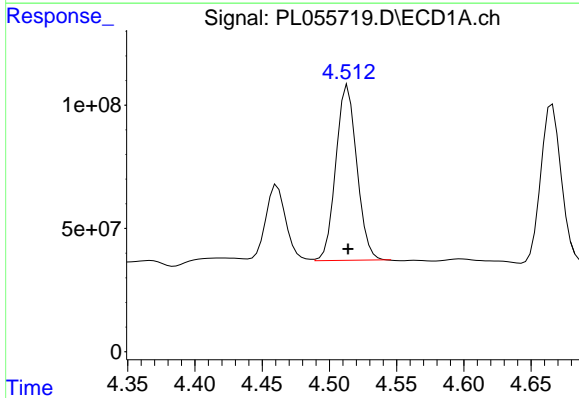
Manual Integrations  
 APPROVED

mohammad  
 1/14/2020 12:10:59 PM



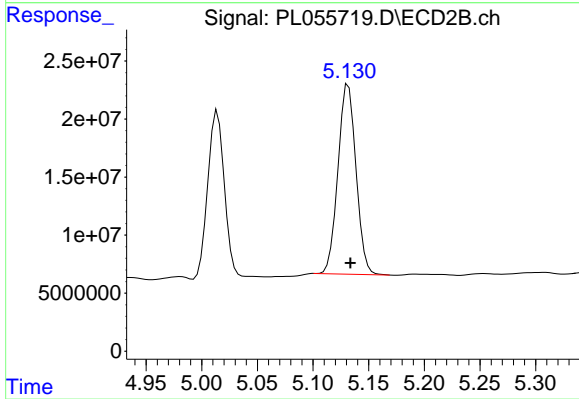
#3 gamma-BHC (Lindane)

R.T.: 4.633 min  
 Delta R.T.: 0.000 min  
 Response: 208222715  
 Conc: 56.01 ng/ml



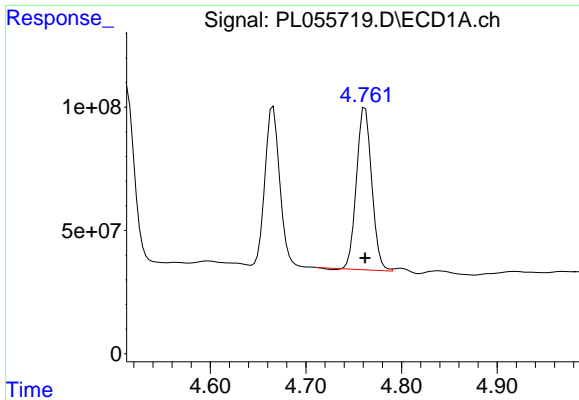
#4 Heptachlor

R.T.: 4.512 min  
 Delta R.T.: -0.002 min  
 Response: 766786199  
 Conc: 53.60 ng/ml m



#4 Heptachlor

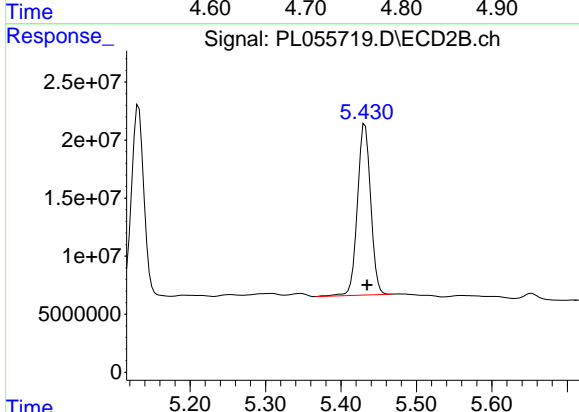
R.T.: 5.132 min  
 Delta R.T.: -0.002 min  
 Response: 184619871  
 Conc: 58.19 ng/ml



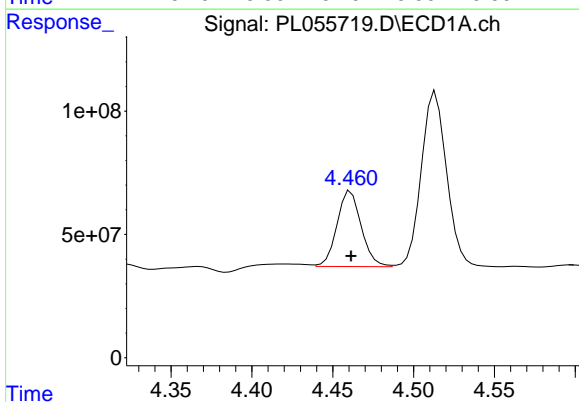
#5 Aldrin  
 R.T.: 4.762 min  
 Delta R.T.: 0.000 min  
 Response: 727570170  
 Conc: 51.86 ng/ml

Instrument :  
 ECD\_L  
 ClientSampleId :  
 CIY1-SB-01-0-52MSD

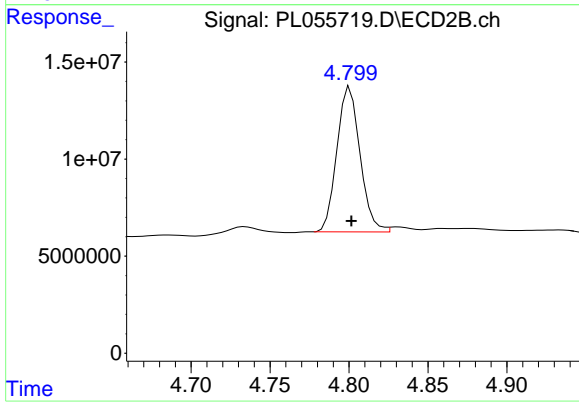
Manual Integrations  
 APPROVED  
 mohammad  
 1/14/2020 12:10:59 PM



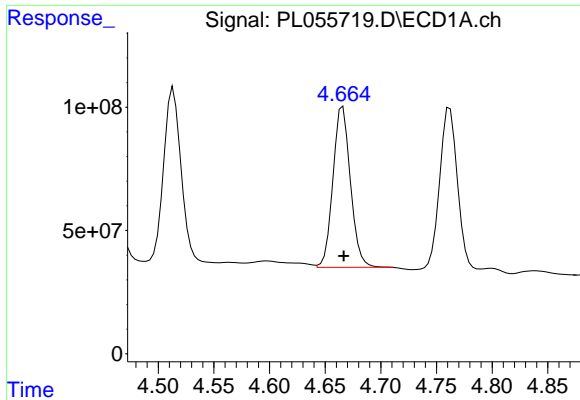
#5 Aldrin  
 R.T.: 5.432 min  
 Delta R.T.: -0.003 min  
 Response: 179502232  
 Conc: 57.55 ng/ml



#6 beta-BHC  
 R.T.: 4.460 min  
 Delta R.T.: -0.002 min  
 Response: 319438025  
 Conc: 52.27 ng/ml m



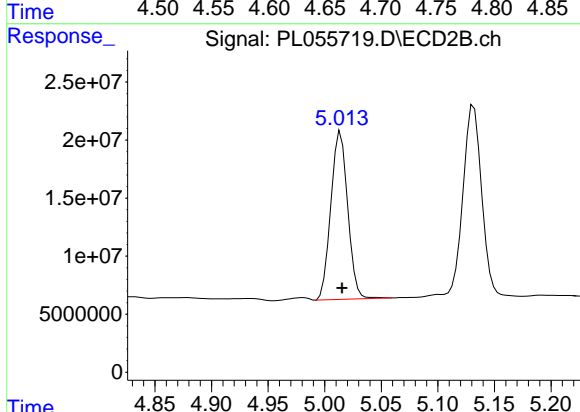
#6 beta-BHC  
 R.T.: 4.801 min  
 Delta R.T.: 0.000 min  
 Response: 76272132  
 Conc: 49.96 ng/ml



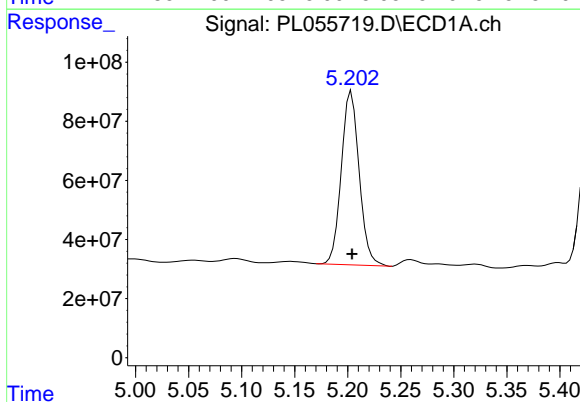
#7 delta-BHC  
 R.T.: 4.666 min  
 Delta R.T.: 0.000 min  
 Response: 707557613  
 Conc: 49.50 ng/ml

Instrument :  
 ECD\_L  
 ClientSampleId :  
 CIY1-SB-01-0-52MSD

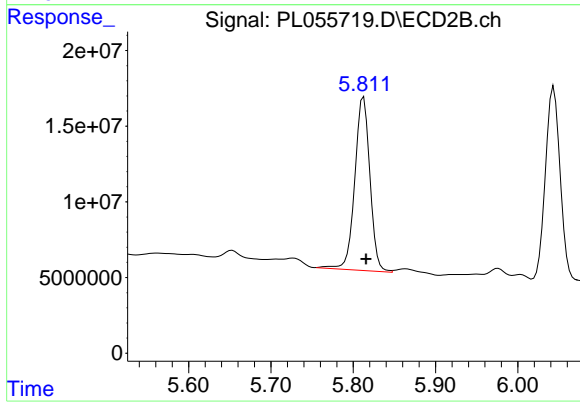
Manual Integrations  
 APPROVED  
 mohammad  
 1/14/2020 12:10:59 PM



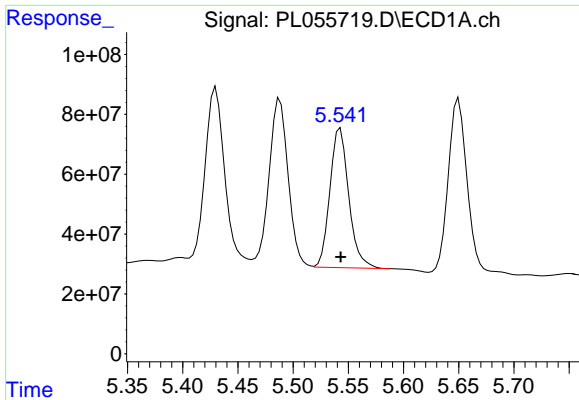
#7 delta-BHC  
 R.T.: 5.014 min  
 Delta R.T.: -0.001 min  
 Response: 150225564  
 Conc: 48.94 ng/ml



#8 Heptachlor epoxide  
 R.T.: 5.203 min  
 Delta R.T.: 0.000 min  
 Response: 686916489  
 Conc: 51.75 ng/ml



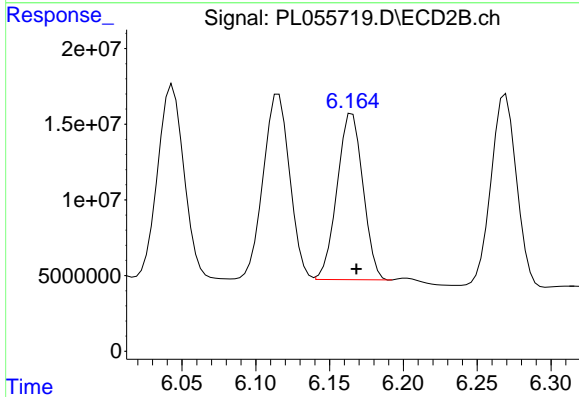
#8 Heptachlor epoxide  
 R.T.: 5.813 min  
 Delta R.T.: -0.003 min  
 Response: 146794936  
 Conc: 49.96 ng/ml



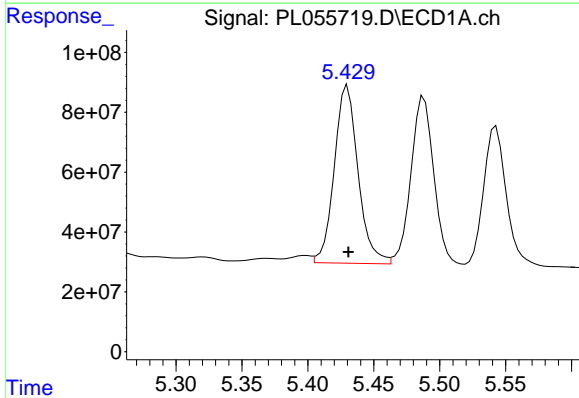
#9 Endosulfan I  
 R.T.: 5.543 min  
 Delta R.T.: 0.000 min  
 Response: 551666568  
 Conc: 44.65 ng/ml

**Instrument :**  
 ECD\_L  
**ClientSampleId :**  
 CIY1-SB-01-0-52MSD

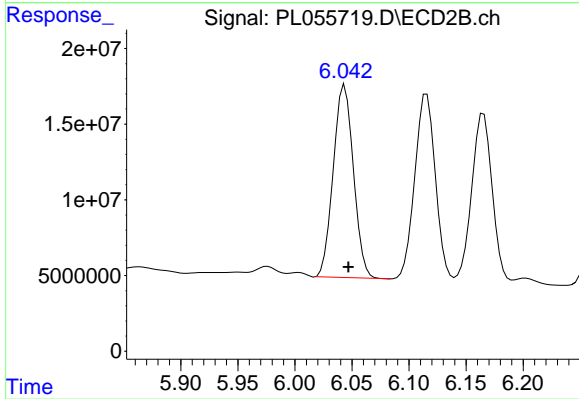
**Manual Integrations**  
**APPROVED**  
 mohammad  
 1/14/2020 12:10:59 PM



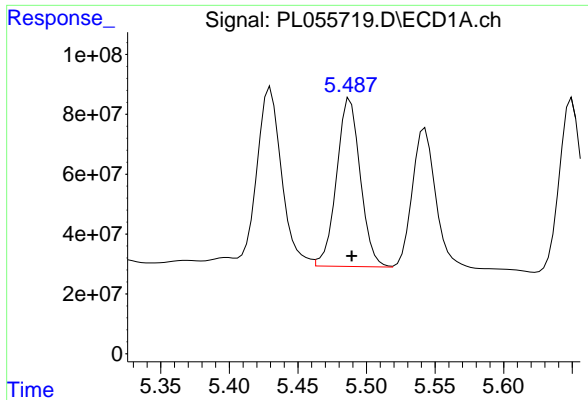
#9 Endosulfan I  
 R.T.: 6.165 min  
 Delta R.T.: -0.003 min  
 Response: 134055728  
 Conc: 50.63 ng/ml



#10 gamma-Chlordane  
 R.T.: 5.430 min  
 Delta R.T.: 0.000 min  
 Response: 746571433  
 Conc: 55.77 ng/ml



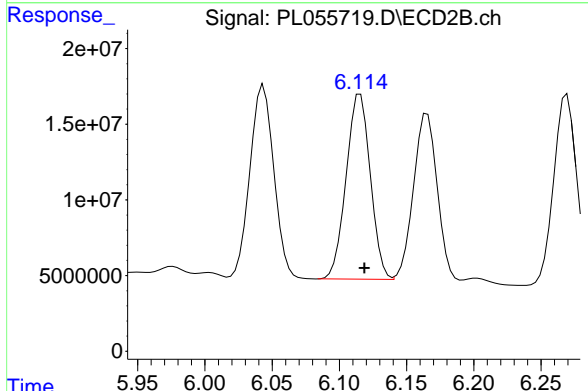
#10 gamma-Chlordane  
 R.T.: 6.044 min  
 Delta R.T.: -0.003 min  
 Response: 156835407  
 Conc: 55.71 ng/ml



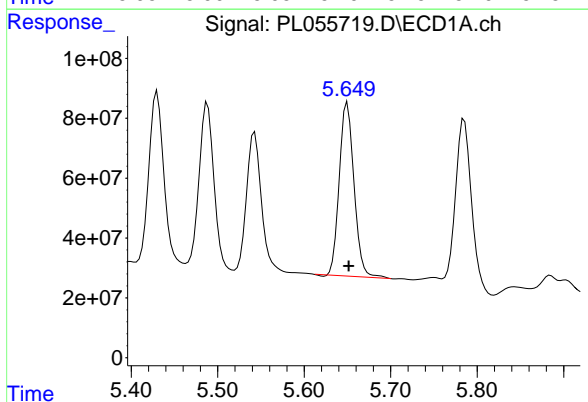
#11 alpha-Chlordane  
 R.T.: 5.488 min  
 Delta R.T.: -0.001 min  
 Response: 677003659  
 Conc: 51.56 ng/ml

Instrument :  
 ECD\_L  
 ClientSampleId :  
 CIY1-SB-01-0-52MSD

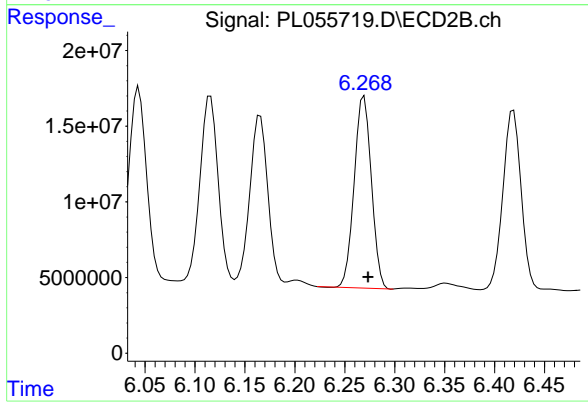
Manual Integrations  
 APPROVED  
 mohammad  
 1/14/2020 12:10:59 PM



#11 alpha-Chlordane  
 R.T.: 6.115 min  
 Delta R.T.: -0.003 min  
 Response: 152942714  
 Conc: 54.41 ng/ml

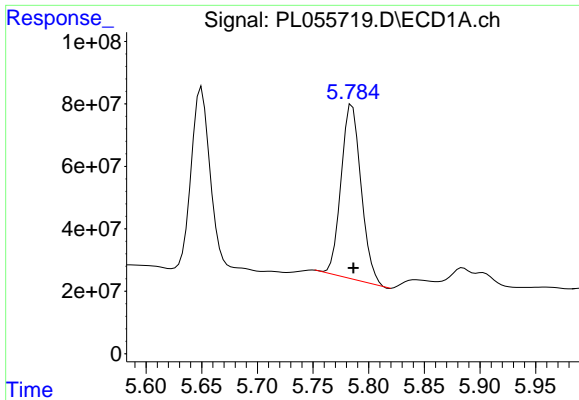


#12 4,4'-DDE  
 R.T.: 5.650 min  
 Delta R.T.: -0.002 min  
 Response: 681430941  
 Conc: 54.80 ng/ml



#12 4,4'-DDE  
 R.T.: 6.269 min  
 Delta R.T.: -0.004 min  
 Response: 151873683  
 Conc: 57.16 ng/ml

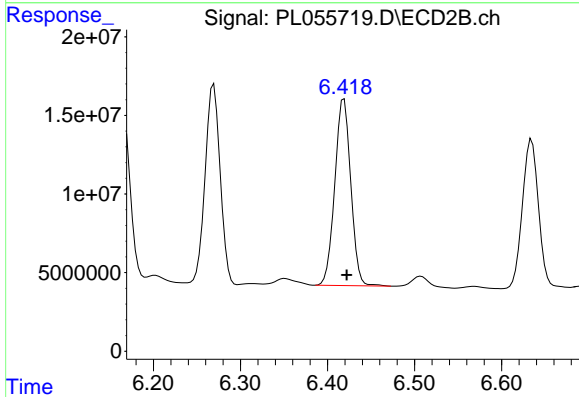




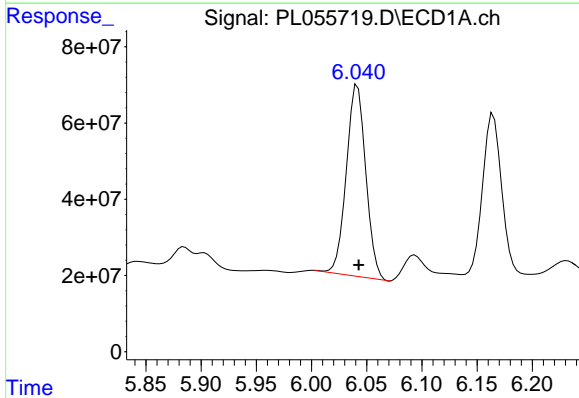
#13 Dieldrin  
 R.T.: 5.785 min  
 Delta R.T.: -0.001 min  
 Response: 702894561  
 Conc: 53.62 ng/ml

Instrument :  
 ECD\_L  
 ClientSampled :  
 CIY1-SB-01-0-52MSD

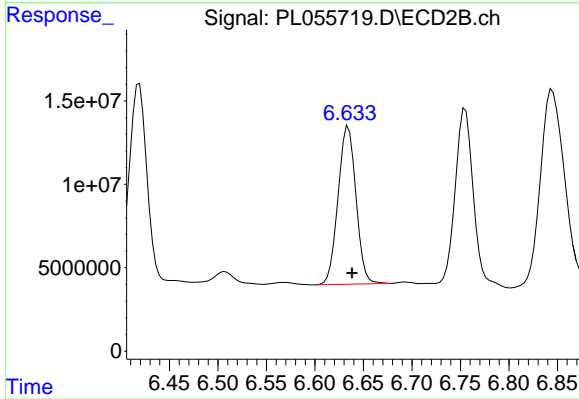
Manual Integrations  
 APPROVED  
 mohammad  
 1/14/2020 12:10:59 PM



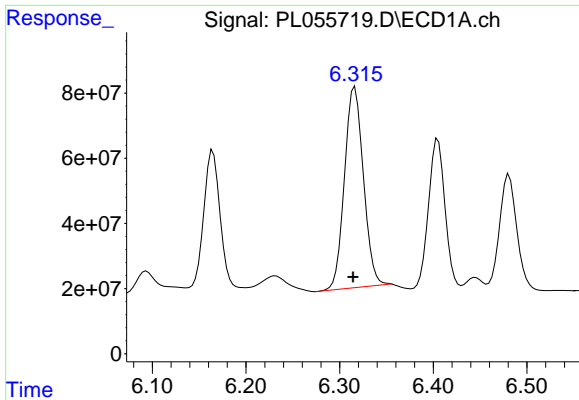
#13 Dieldrin  
 R.T.: 6.419 min  
 Delta R.T.: -0.003 min  
 Response: 151762027  
 Conc: 55.50 ng/ml



#14 Endrin  
 R.T.: 6.042 min  
 Delta R.T.: -0.001 min  
 Response: 617158370  
 Conc: 53.44 ng/ml



#14 Endrin  
 R.T.: 6.635 min  
 Delta R.T.: -0.004 min  
 Response: 121519126  
 Conc: 53.89 ng/ml



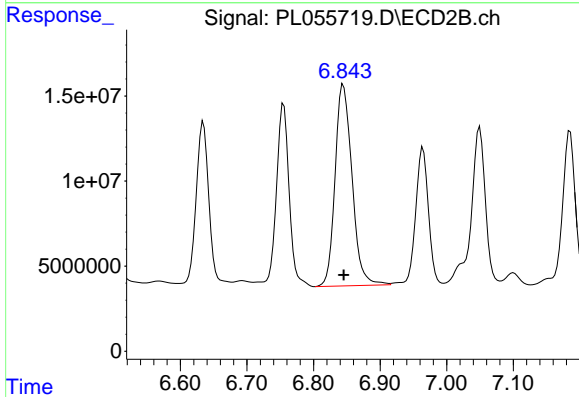
#15 Endosulfan II

R.T.: 6.316 min  
 Delta R.T.: 0.002 min  
 Response: 866052540  
 Conc: 80.28 ng/ml

Instrument :  
 ECD\_L  
 ClientSampled :  
 CIY1-SB-01-0-52MSD

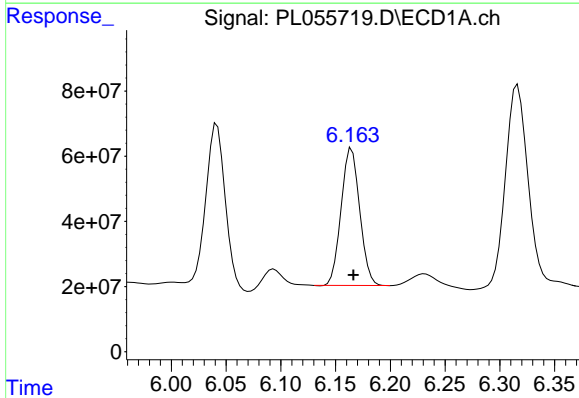
Manual Integrations  
 APPROVED

mohammad  
 1/14/2020 12:10:59 PM



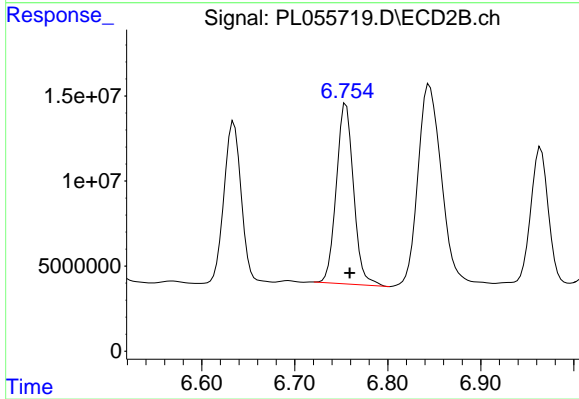
#15 Endosulfan II

R.T.: 6.845 min  
 Delta R.T.: 0.000 min  
 Response: 209497348  
 Conc: 87.20 ng/ml



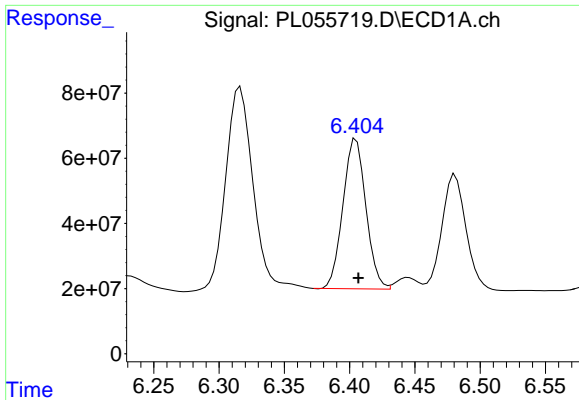
#16 4,4'-DDD

R.T.: 6.165 min  
 Delta R.T.: -0.002 min  
 Response: 497427248  
 Conc: 52.49 ng/ml



#16 4,4'-DDD

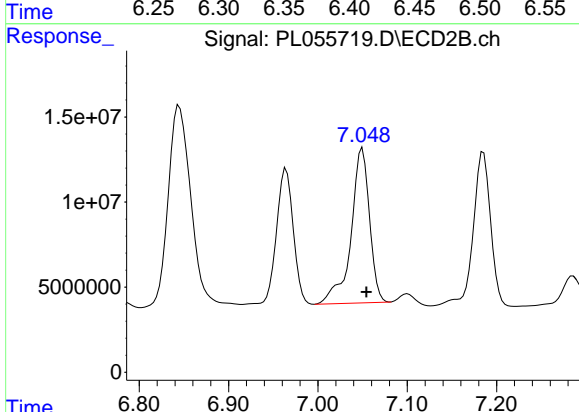
R.T.: 6.755 min  
 Delta R.T.: -0.004 min  
 Response: 136785570  
 Conc: 66.01 ng/ml



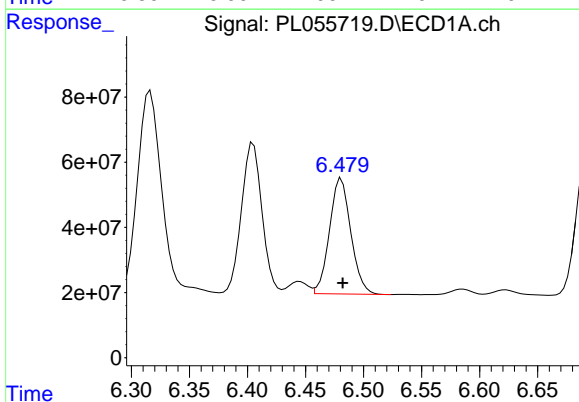
#17 4,4'-DDT  
 R.T.: 6.405 min  
 Delta R.T.: -0.002 min  
 Response: 563910882  
 Conc: 65.66 ng/ml

**Instrument :**  
 ECD\_L  
**ClientSampled :**  
 CIY1-SB-01-0-52MSD

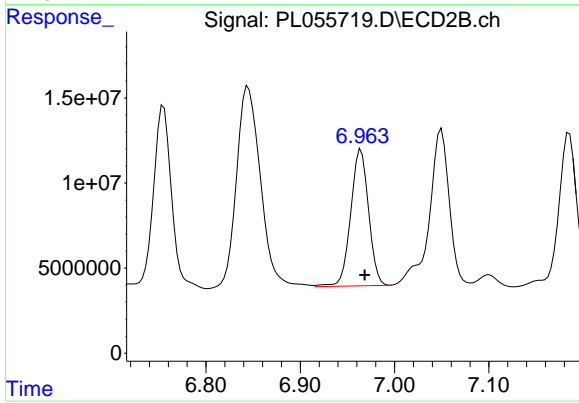
**Manual Integrations**  
**APPROVED**  
 mohammad  
 1/14/2020 12:10:59 PM



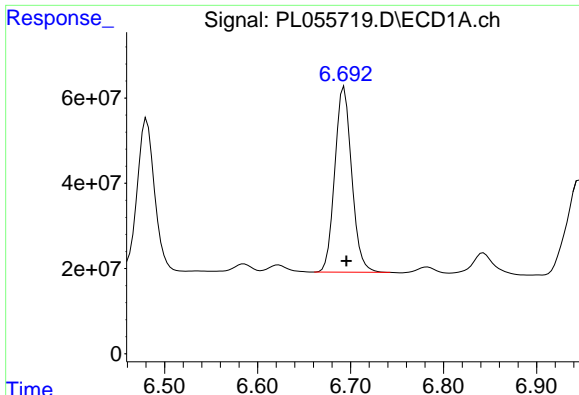
#17 4,4'-DDT  
 R.T.: 7.050 min  
 Delta R.T.: -0.004 min  
 Response: 130800332  
 Conc: 66.34 ng/ml



#18 Endrin aldehyde  
 R.T.: 6.481 min  
 Delta R.T.: -0.001 min  
 Response: 455119834  
 Conc: 48.22 ng/ml



#18 Endrin aldehyde  
 R.T.: 6.964 min  
 Delta R.T.: -0.004 min  
 Response: 105598232  
 Conc: 52.00 ng/ml



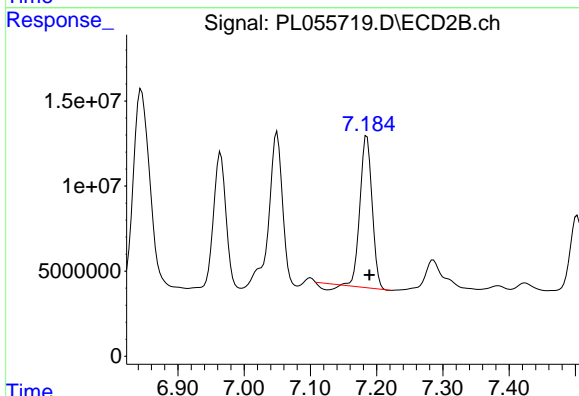
#19 Endosulfan Sulfate

R.T.: 6.693 min  
 Delta R.T.: -0.002 min  
 Response: 549501550  
 Conc: 56.17 ng/ml

Instrument :  
 ECD\_L  
 ClientSampleId :  
 CIY1-SB-01-0-52MSD

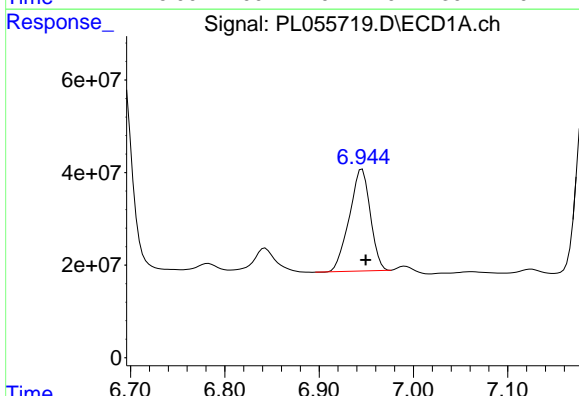
Manual Integrations  
 APPROVED

mohammad  
 1/14/2020 12:10:59 PM



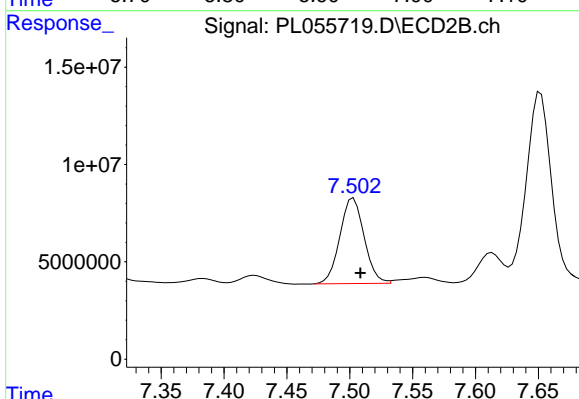
#19 Endosulfan Sulfate

R.T.: 7.185 min  
 Delta R.T.: -0.004 min  
 Response: 110090874  
 Conc: 49.48 ng/ml



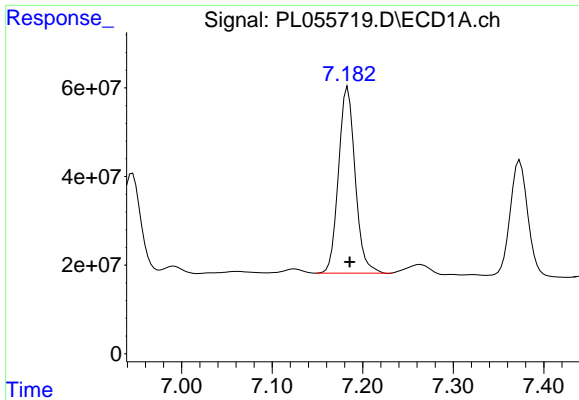
#20 Methoxychlor

R.T.: 6.946 min  
 Delta R.T.: -0.004 min  
 Response: 339935966  
 Conc: 79.19 ng/ml



#20 Methoxychlor

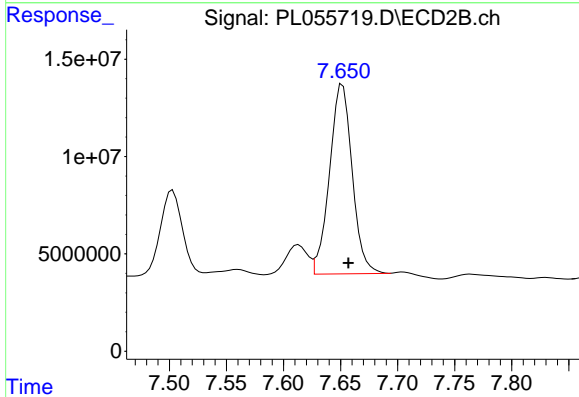
R.T.: 7.503 min  
 Delta R.T.: -0.005 min  
 Response: 59048791  
 Conc: 56.41 ng/ml



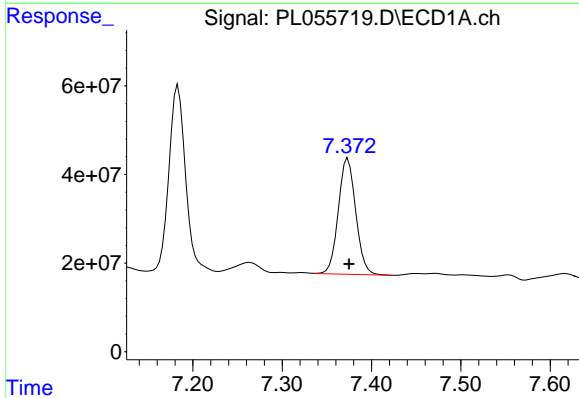
#21 Endrin ketone  
 R.T.: 7.183 min  
 Delta R.T.: -0.002 min  
 Response: 535812924  
 Conc: 47.27 ng/ml

Instrument :  
 ECD\_L  
 ClientSampleId :  
 CIY1-SB-01-0-52MSD

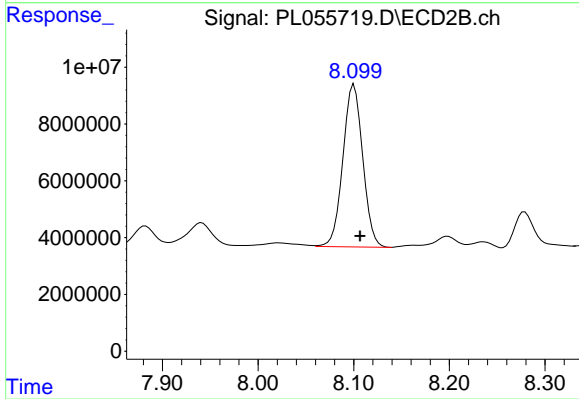
Manual Integrations  
 APPROVED  
 mohammad  
 1/14/2020 12:10:59 PM



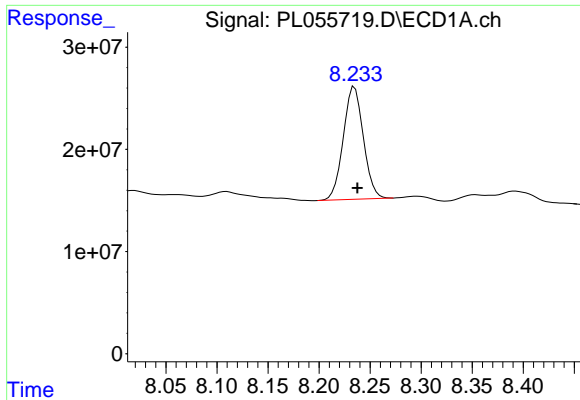
#21 Endrin ketone  
 R.T.: 7.652 min  
 Delta R.T.: -0.005 min  
 Response: 134955094  
 Conc: 56.68 ng/ml



#22 Mirex  
 R.T.: 7.374 min  
 Delta R.T.: -0.001 min  
 Response: 353834039  
 Conc: 51.68 ng/ml



#22 Mirex  
 R.T.: 8.100 min  
 Delta R.T.: -0.006 min  
 Response: 82603075  
 Conc: 50.38 ng/ml



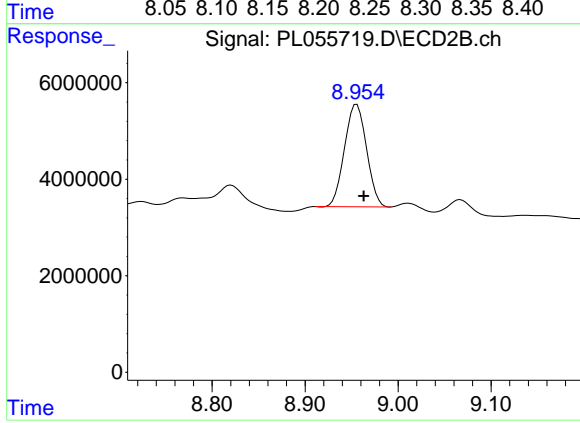
#28 Decachlorobiphenyl

R.T.: 8.235 min  
Delta R.T.: -0.003 min  
Response: 150843596  
Conc: 17.18 ng/ml

Instrument :  
ECD\_L  
ClientSampleId :  
CIY1-SB-01-0-52MSD

Manual Integrations  
APPROVED

mohammad  
1/14/2020 12:10:59 PM



#28 Decachlorobiphenyl

R.T.: 8.956 min  
Delta R.T.: -0.008 min  
Response: 35041709  
Conc: 16.85 ng/ml