

Data Path : Z:\pestpcbsrv\HPCHEM1\ECD_L\Data\PL011322\
 Data File : PL071974.D
 Signal(s) : Signal #1: ECD1A.ch Signal #2: ECD2B.ch
 Acq On : 13 Jan 2022 13:36
 Operator : AR\AJ
 Sample : PB142008BL
 Misc :
 ALS Vial : 6 Sample Multiplier: 1

Instrument :
 ECD_L
 ClientSampleId :

Integration File signal 1: autoint1.e
 Integration File signal 2: autoint2.e
 Quant Time: Jan 13 20:14:59 2022
 Quant Method : Z:\pestpcbsrv\HPCHEM1\ECD_L\methods\PL010422.M
 Quant Title : GC Extractables
 QLast Update : Thu Jan 06 10:33:37 2022
 Response via : Initial Calibration
 Integrator: ChemStation

Volume Inj. : 1 µl
 Signal #1 Phase : ZB-MR2 Signal #2 Phase: ZB-MR1
 Signal #1 Info : 30M x 0.32mm x0.2 Signal #2 Info : 30M x 0.32mm x0.5µm

Compound	RT#1	RT#2	Resp#1	Resp#2	ng/ml	ng/ml

System Monitoring Compounds						
1) SA Tetrachlo...	4.567	5.494	9345474	26408849	20.231	21.494
28) SA Decachlor...	10.329	11.392	16408055	27558263	22.694	23.256
Target Compounds						
6) B beta-BHC	6.046f	0.000	279671	0	1.034	N.D. #
7) B delta-BHC	0.000	6.975f	0	434206	N.D.	0.283 #
8) B Heptachlo...	0.000	7.941	0	763193	N.D.	0.546 #
9) A Endosulfan I	0.000	8.371	0	289939	N.D.	0.234 #
13) MA Dieldrin	0.000	8.670f	0	135703	N.D.	0.103 #
15) B Endosulfa...	0.000	9.140f	0	663357	N.D.	0.591 #
17) MA 4,4'-DDT	0.000	9.370f	0	37443	N.D.	0.040 #
18) B Endrin al...	0.000	9.266	0	87351	N.D.	0.103 #
21) B Endrin ke...	0.000	9.960f	0	109833	N.D.	0.097 #

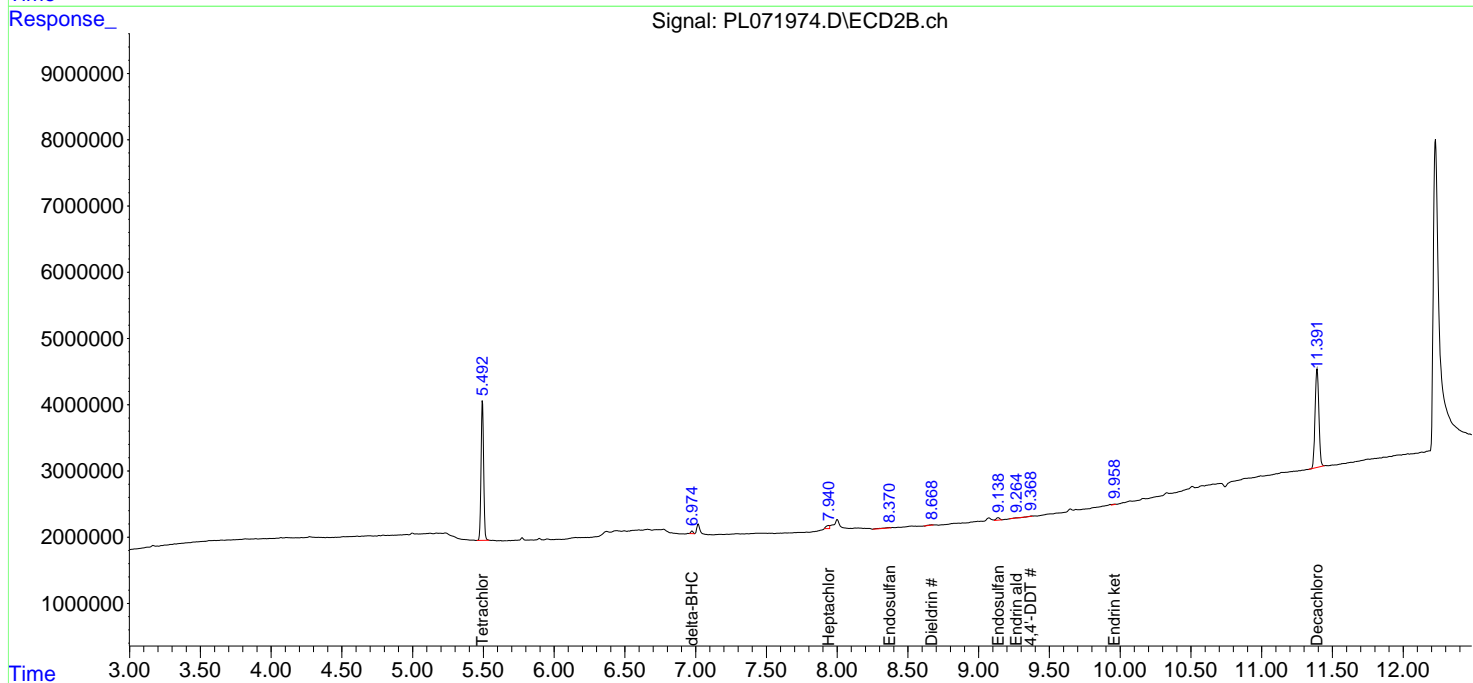
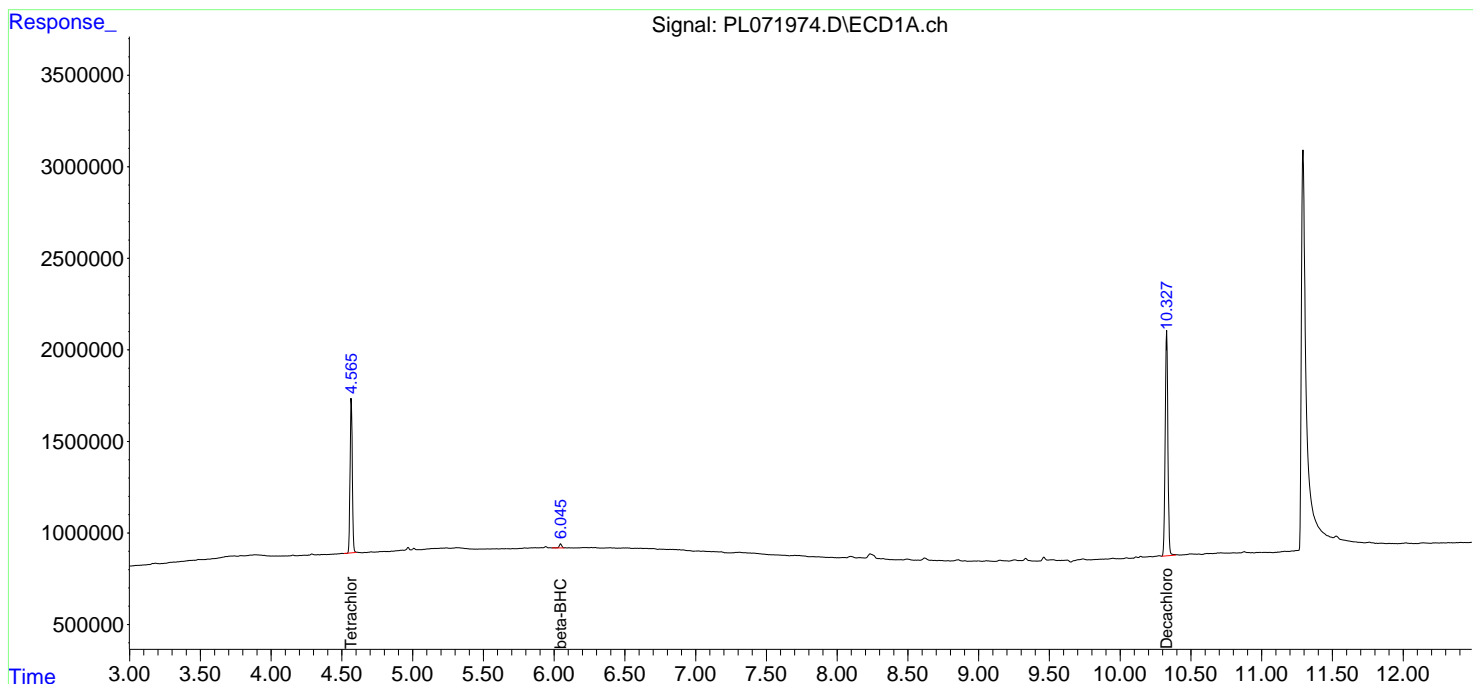
(f)=RT Delta > 1/2 Window (#)=Amounts differ by > 25% (m)=manual int.

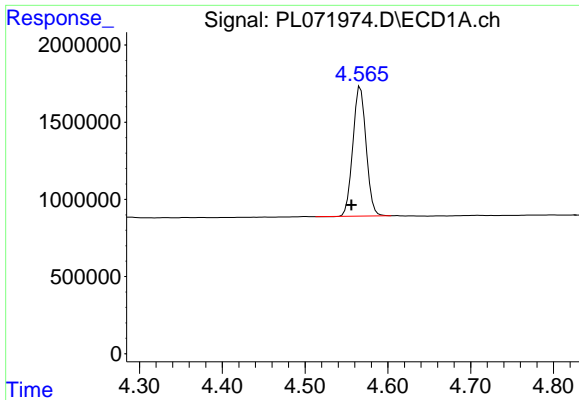
Data Path : Z:\pestpcbsrv\HPCHEM1\ECD_L\Data\PL011322\
 Data File : PL071974.D
 Signal(s) : Signal #1: ECD1A.ch Signal #2: ECD2B.ch
 Acq On : 13 Jan 2022 13:36
 Operator : AR\AJ
 Sample : PB142008BL
 Misc :
 ALS Vial : 6 Sample Multiplier: 1

Instrument :
 ECD_L
 ClientSampleId :

Integration File signal 1: autoint1.e
 Integration File signal 2: autoint2.e
 Quant Time: Jan 13 20:14:59 2022
 Quant Method : Z:\pestpcbsrv\HPCHEM1\ECD_L\methods\PL010422.M
 Quant Title : GC Extractables
 QLast Update : Thu Jan 06 10:33:37 2022
 Response via : Initial Calibration
 Integrator: ChemStation

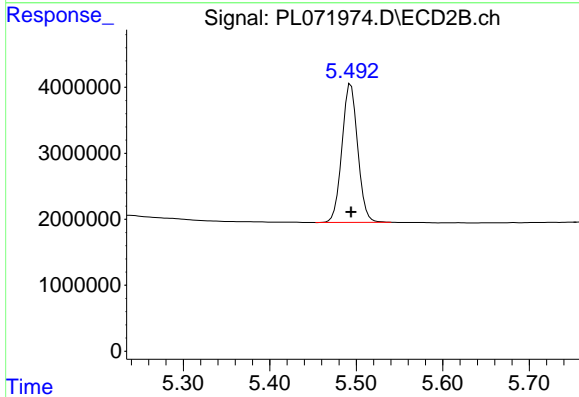
Volume Inj. : 1 µl
 Signal #1 Phase : ZB-MR2 Signal #2 Phase: ZB-MR1
 Signal #1 Info : 30M x 0.32mm x0.2 Signal #2 Info : 30M x 0.32mm x0.5µm



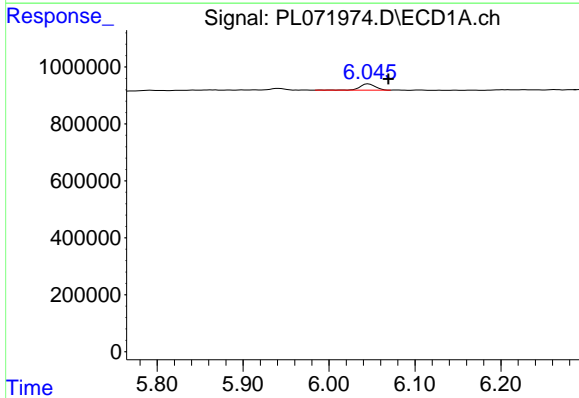


#1 Tetrachloro-m-xylene
 R.T.: 4.567 min
 Delta R.T.: 0.011 min
 Response: 9345474
 Conc: 20.23 ng/ml

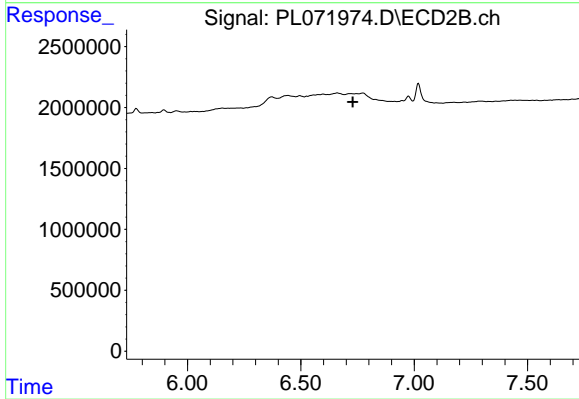
Instrument :
 ECD_L
 ClientSampleId :



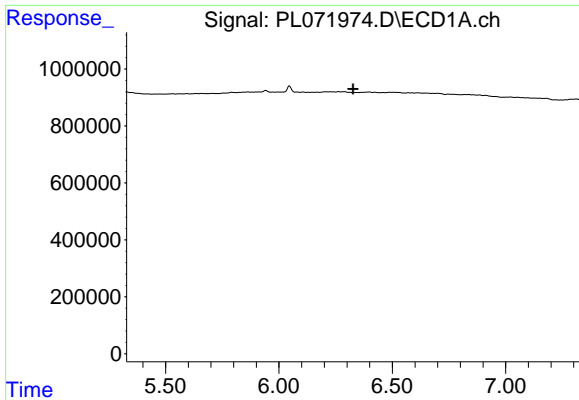
#1 Tetrachloro-m-xylene
 R.T.: 5.494 min
 Delta R.T.: 0.000 min
 Response: 26408849
 Conc: 21.49 ng/ml



#6 beta-BHC
 R.T.: 6.046 min
 Delta R.T.: -0.023 min
 Response: 279671
 Conc: 1.03 ng/ml



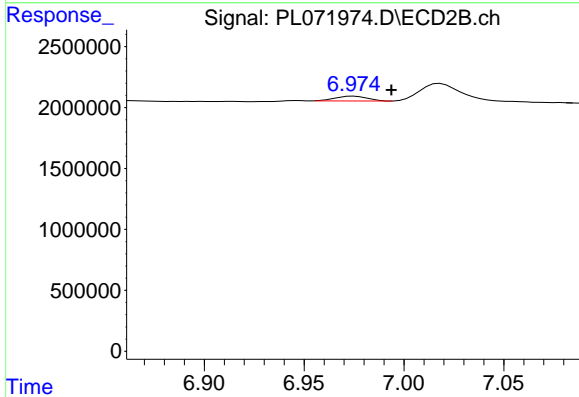
#6 beta-BHC
 R.T.: 0.000 min
 Exp R.T. : 6.729 min
 Response: 0
 Conc: N.D.



#7 delta-BHC

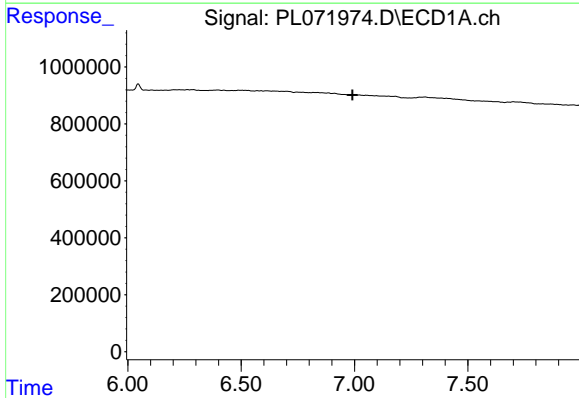
R.T.: 0.000 min
 Exp R.T.: 6.327 min
 Response: 0
 Conc: N.D.

Instrument :
 ECD_L
 ClientSampleId :



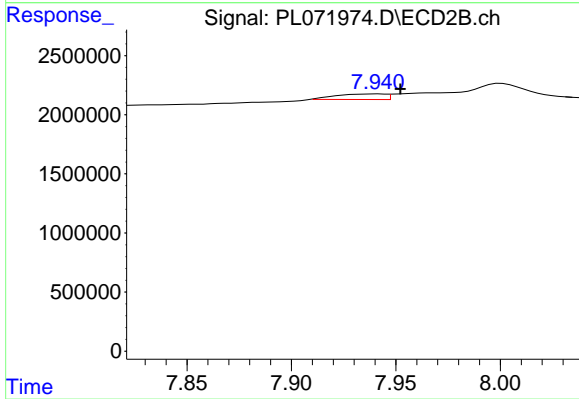
#7 delta-BHC

R.T.: 6.975 min
 Delta R.T.: -0.019 min
 Response: 434206
 Conc: 0.28 ng/ml



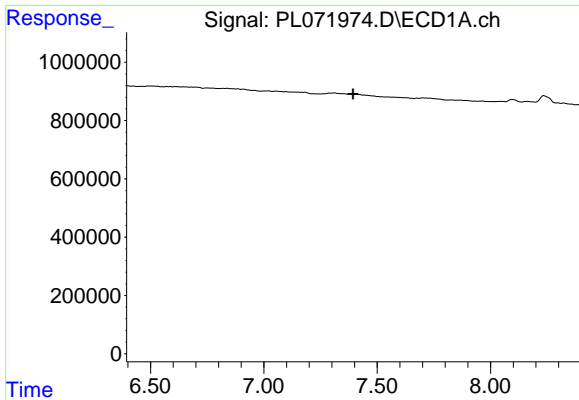
#8 Heptachlor epoxide

R.T.: 0.000 min
 Exp R.T.: 6.992 min
 Response: 0
 Conc: N.D.



#8 Heptachlor epoxide

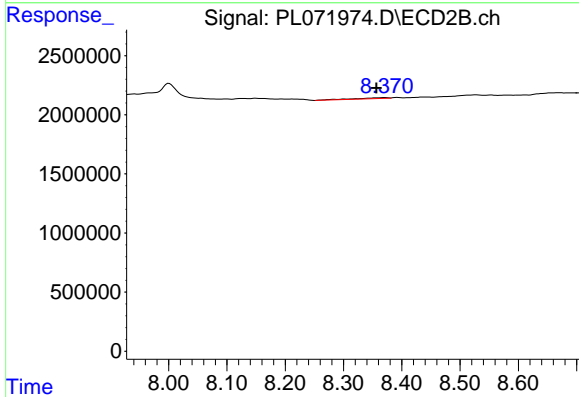
R.T.: 7.941 min
 Delta R.T.: -0.011 min
 Response: 763193
 Conc: 0.55 ng/ml



#9 Endosulfan I

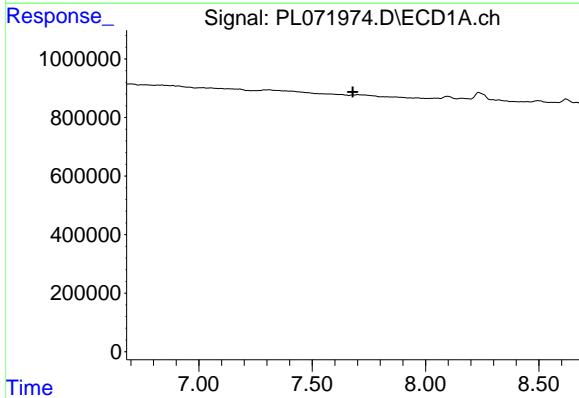
R.T.: 0.000 min
 Exp R.T.: 7.393 min
 Response: 0
 Conc: N.D.

Instrument :
 ECD_L
 ClientSampleId :



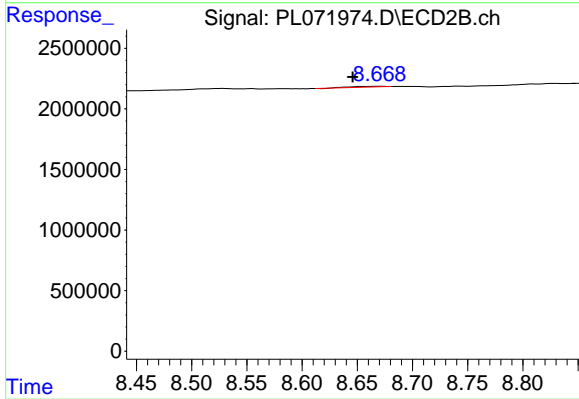
#9 Endosulfan I

R.T.: 8.371 min
 Delta R.T.: 0.014 min
 Response: 289939
 Conc: 0.23 ng/ml



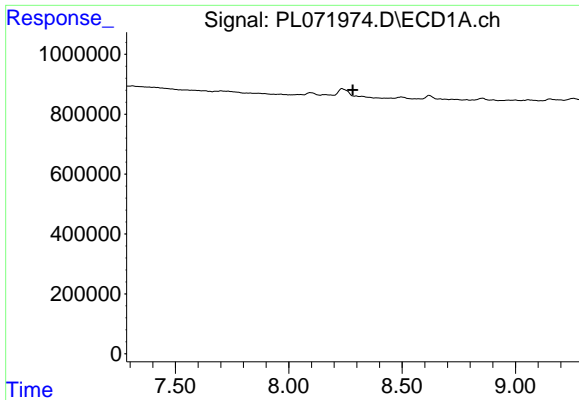
#13 Dieldrin

R.T.: 0.000 min
 Exp R.T.: 7.680 min
 Response: 0
 Conc: N.D.



#13 Dieldrin

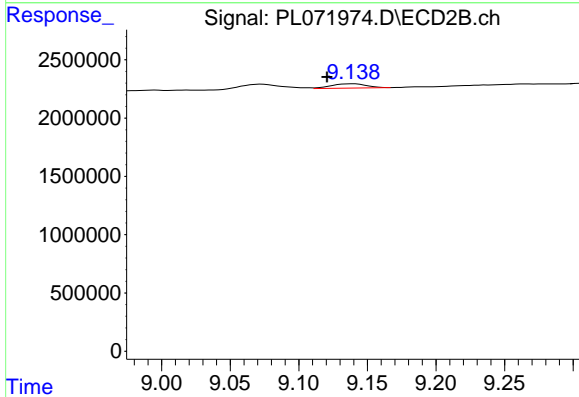
R.T.: 8.670 min
 Delta R.T.: 0.024 min
 Response: 135703
 Conc: 0.10 ng/ml



#15 Endosulfan II

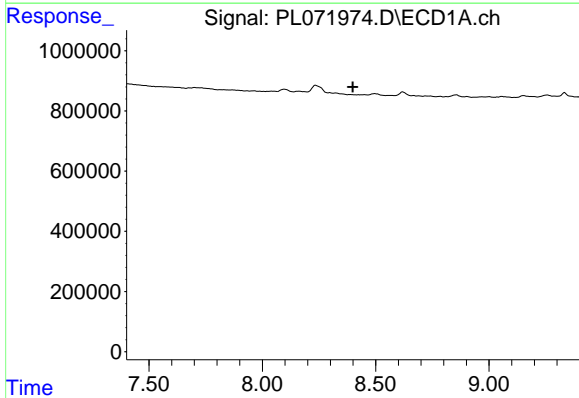
R.T.: 0.000 min
 Exp R.T.: 8.283 min
 Response: 0
 Conc: N.D.

Instrument :
 ECD_L
 ClientSampleId :



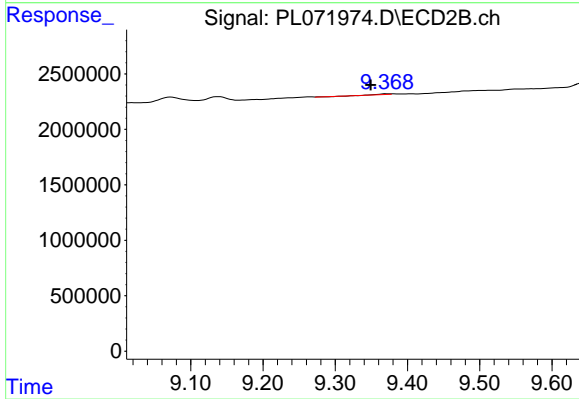
#15 Endosulfan II

R.T.: 9.140 min
 Delta R.T.: 0.019 min
 Response: 663357
 Conc: 0.59 ng/ml



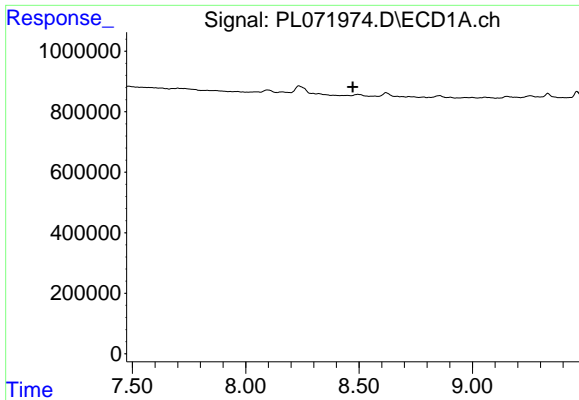
#17 4,4'-DDT

R.T.: 0.000 min
 Exp R.T.: 8.398 min
 Response: 0
 Conc: N.D.



#17 4,4'-DDT

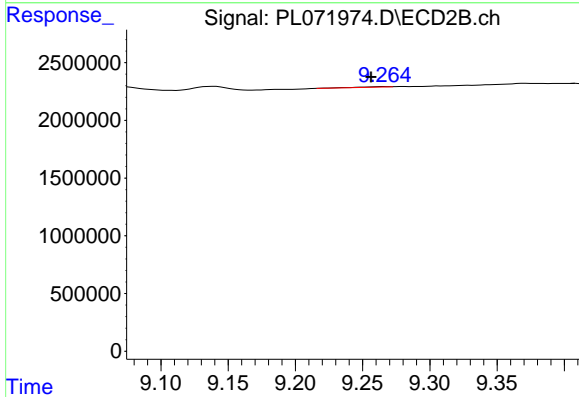
R.T.: 9.370 min
 Delta R.T.: 0.021 min
 Response: 37443
 Conc: 0.04 ng/ml



#18 Endrin aldehyde

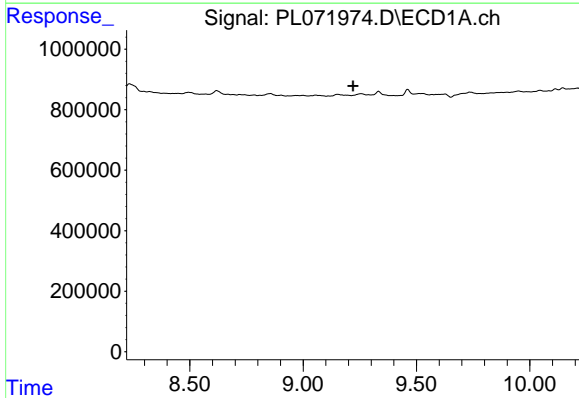
R.T.: 0.000 min
 Exp R.T. : 8.472 min
 Response: 0
 Conc: N.D.

Instrument :
 ECD_L
 ClientSampleId :



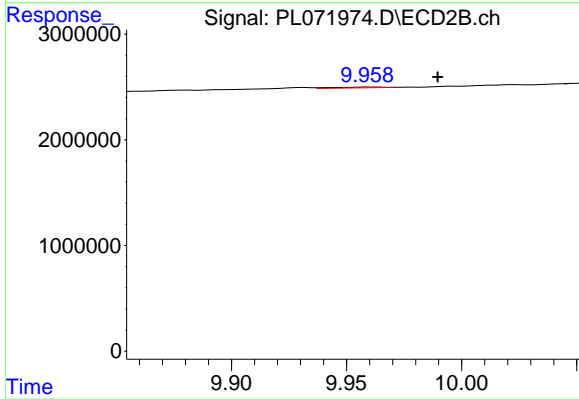
#18 Endrin aldehyde

R.T.: 9.266 min
 Delta R.T.: 0.010 min
 Response: 87351
 Conc: 0.10 ng/ml



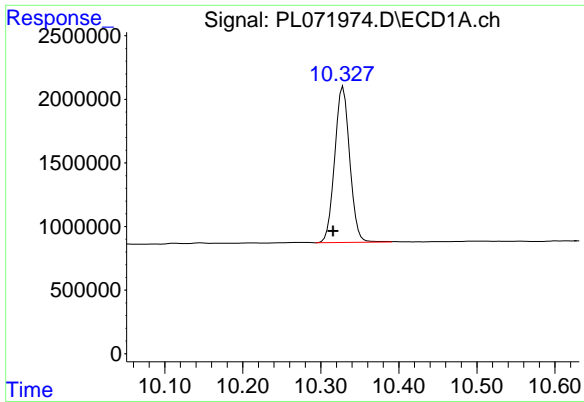
#21 Endrin ketone

R.T.: 0.000 min
 Exp R.T. : 9.220 min
 Response: 0
 Conc: N.D.



#21 Endrin ketone

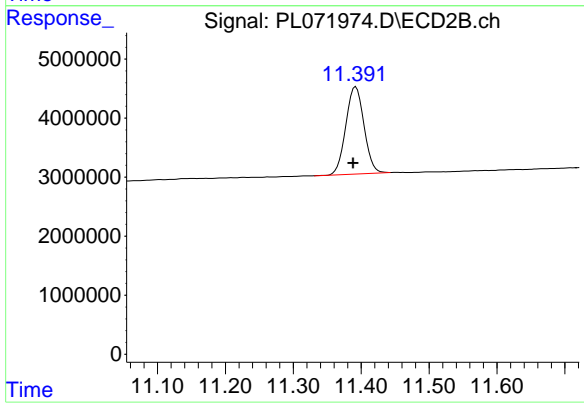
R.T.: 9.960 min
 Delta R.T.: -0.030 min
 Response: 109833
 Conc: 0.10 ng/ml



#28 Decachlorobiphenyl

R.T.: 10.329 min
Delta R.T.: 0.013 min
Response: 16408055
Conc: 22.69 ng/ml

Instrument :
ECD_L
ClientSampleId :



#28 Decachlorobiphenyl

R.T.: 11.392 min
Delta R.T.: 0.004 min
Response: 27558263
Conc: 23.26 ng/ml