

Data Path : Z:\pestpcbsrv\HPCHEM1\ECD_L\Data\PL011419\
 Data File : PL043864.D
 Signal(s) : Signal #1: ECD1A.ch Signal #2: ECD2B.ch
 Acq On : 14 Jan 2019 13:23
 Operator : AJ\SJ
 Sample : K1118-01
 Misc :
 ALS Vial : 6 Sample Multiplier: 1

Instrument :
 ECD_L
ClientSampleId :
 FENCE-SOIL-PILE-1

Integration File signal 1: autoint1.e
 Integration File signal 2: autoint2.e
 Quant Time: Jan 14 21:35:24 2019
 Quant Method : Z:\pestpcbsrv\HPCHEM1\ECD_L\methods\PL011119.M
 Quant Title : GC Extractables
 QLast Update : Sat Jan 12 01:24:53 2019
 Response via : Initial Calibration
 Integrator: ChemStation

Volume Inj. : 2 µl
 Signal #1 Phase : ZB-MR1 Signal #2 Phase: ZB-MR2
 Signal #1 Info : 30M x 0.32mm x0.5 Signal #2 Info : 30M x 0.32mm x0.25µm

Compound	RT#1	RT#2	Resp#1	Resp#2	ng/ml	ng/ml

System Monitoring Compounds						
1) SA Tetrachlo...	3.525	4.007	51487079	21092919	10.489	10.823
28) SA Decachlor...	8.250	9.078	78259252	21669291	13.848	13.641
Target Compounds						
6) B beta-BHC	4.454f	0.000	7283605	0	2.447	N.D. #
8) B Heptachlo...	5.284f	0.000	8798880	0	1.384	N.D. #
10) B gamma-Chl...	5.475	0.000	7200654	0	1.122	N.D. #
11) B alpha-Chl...	5.475f	0.000	7200654	0	1.140	N.D. #
13) MA Dieldrin	5.804	6.430f	19145124	6094040	3.073	2.857
14) MA Endrin	6.120f	6.708	21883834	5619234	4.034	3.204
15) B Endosulfa...	6.324	0.000	8217128	0	1.579	N.D. #
16) A 4,4'-DDD	0.000	6.844	0	4268816	N.D.	2.825 #
17) MA 4,4'-DDT	6.427	0.000	30934177	0	6.782	N.D. #
23) Chlordane-1	4.454	0.000	7283605	0	32.562	N.D. #
25) Chlordane-3	5.475	0.000	7200654	0	9.916	N.D. #
26) Chlordane-4	5.475	0.000	7200654	0	11.299	N.D. #
27) Chlordane-5	6.324	0.000	8217128	0	41.239	N.D. #

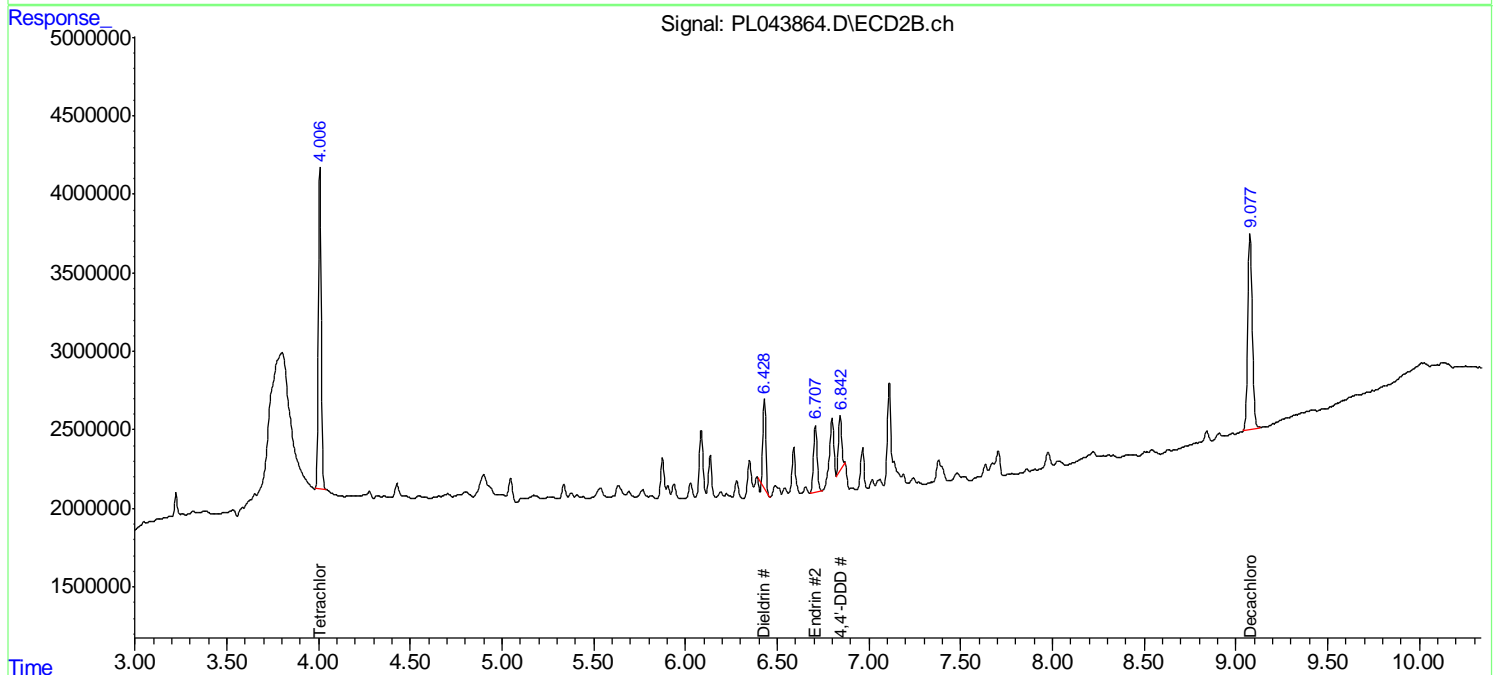
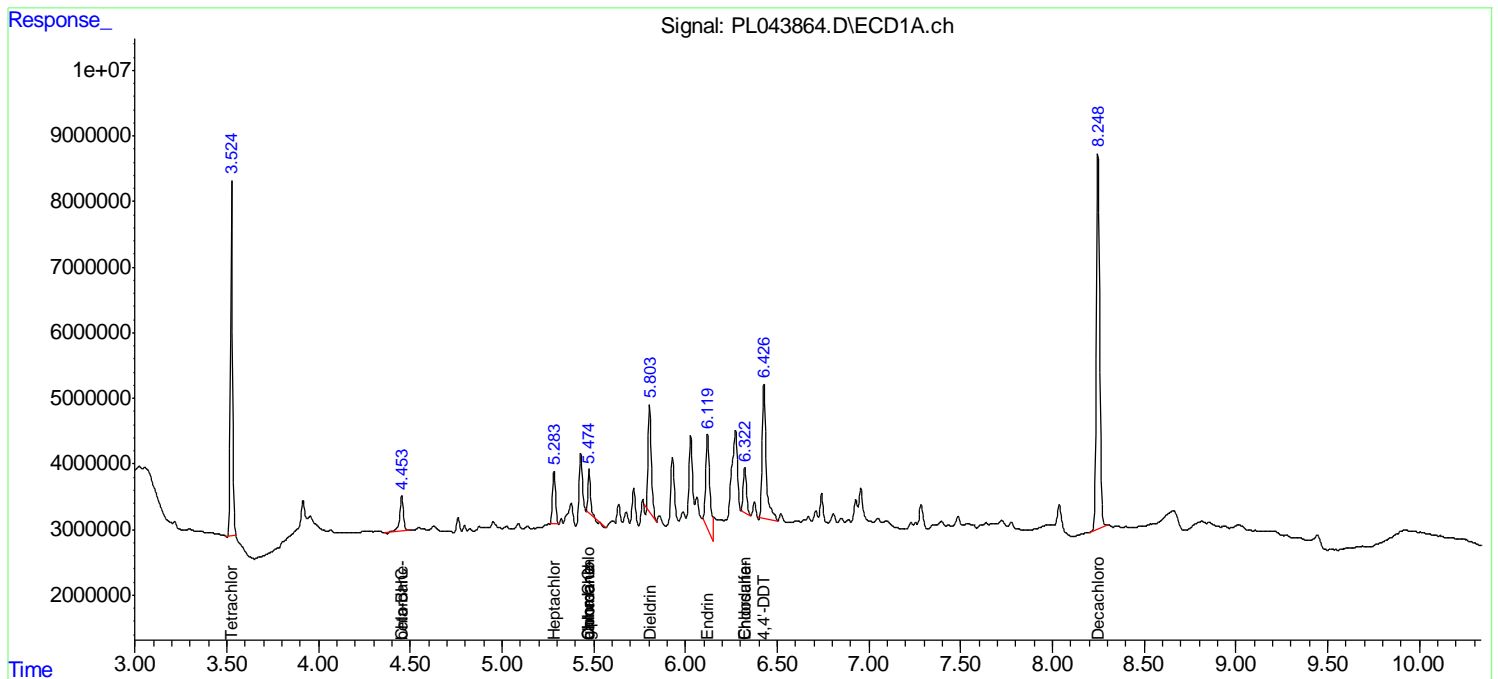
(f)=RT Delta > 1/2 Window (#)=Amounts differ by > 25% (m)=manual int.

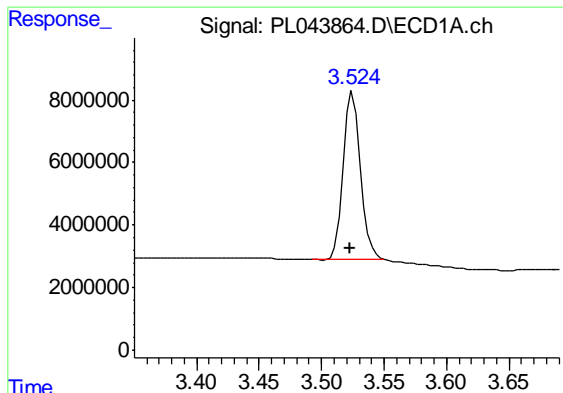
Data Path : Z:\pestpcbsrv\HPCHEM1\ECD_L\Data\PL011419\
 Data File : PL043864.D
 Signal(s) : Signal #1: ECD1A.ch Signal #2: ECD2B.ch
 Acq On : 14 Jan 2019 13:23
 Operator : AJ\SJ
 Sample : K1118-01
 Misc :
 ALS Vial : 6 Sample Multiplier: 1

Instrument :
 ECD_L
ClientSampleId :
 FENCE-SOIL-PILE-1

Integration File signal 1: autoint1.e
 Integration File signal 2: autoint2.e
 Quant Time: Jan 14 21:35:24 2019
 Quant Method : Z:\pestpcbsrv\HPCHEM1\ECD_L\methods\PL011119.M
 Quant Title : GC Extractables
 QLast Update : Sat Jan 12 01:24:53 2019
 Response via : Initial Calibration
 Integrator: ChemStation

Volume Inj. : 2 µl
 Signal #1 Phase : ZB-MR1 Signal #2 Phase: ZB-MR2
 Signal #1 Info : 30M x 0.32mm x0.5 Signal #2 Info : 30M x 0.32mm x0.25µm

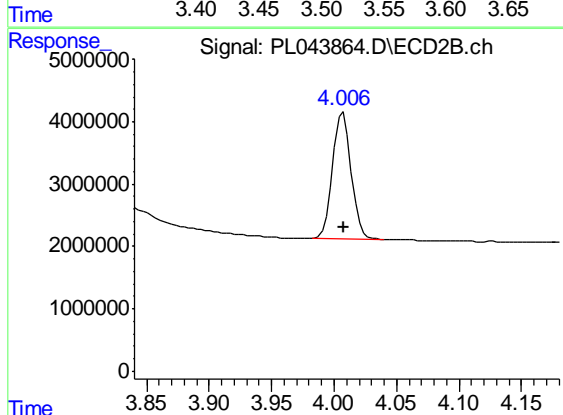




#1 Tetrachloro-m-xylene

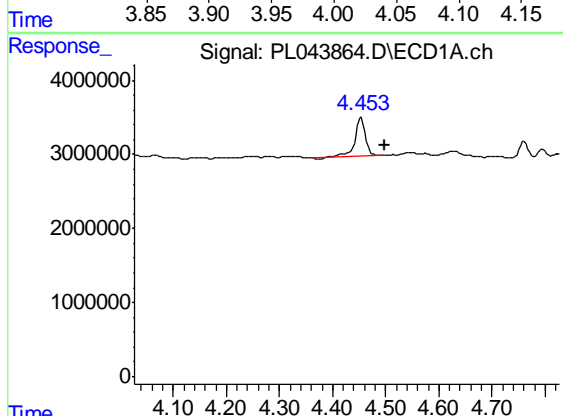
R.T.: 3.525 min
 Delta R.T.: 0.002 min
 Response: 51487079
 Conc: 10.49 ng/ml

Instrument :
 ECD_L
 ClientSampleId :
 FENCE-SOIL-PILE-1



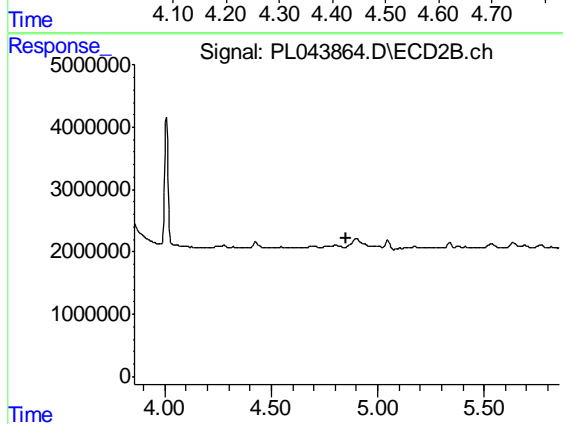
#1 Tetrachloro-m-xylene

R.T.: 4.007 min
 Delta R.T.: 0.000 min
 Response: 21092919
 Conc: 10.82 ng/ml



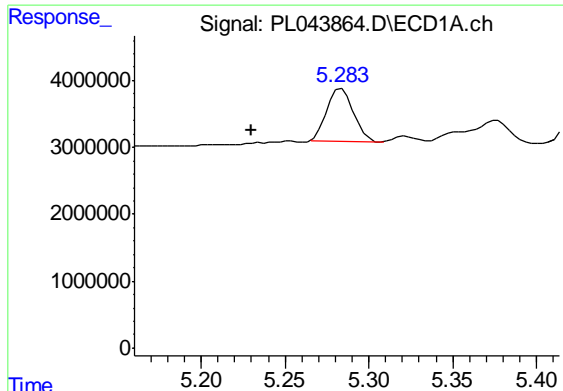
#6 beta-BHC

R.T.: 4.454 min
 Delta R.T.: -0.044 min
 Response: 7283605
 Conc: 2.45 ng/ml



#6 beta-BHC

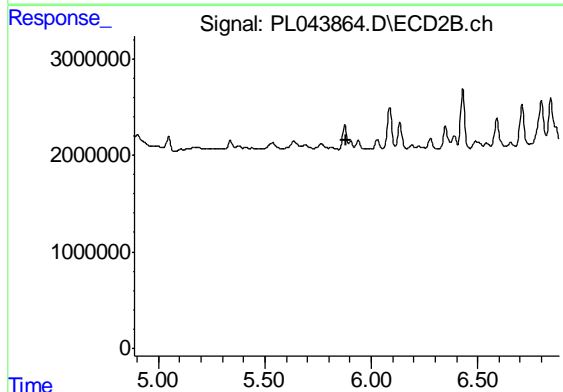
R.T.: 0.000 min
 Exp R.T. : 4.855 min
 Response: 0
 Conc: N.D.



#8 Heptachlor epoxide

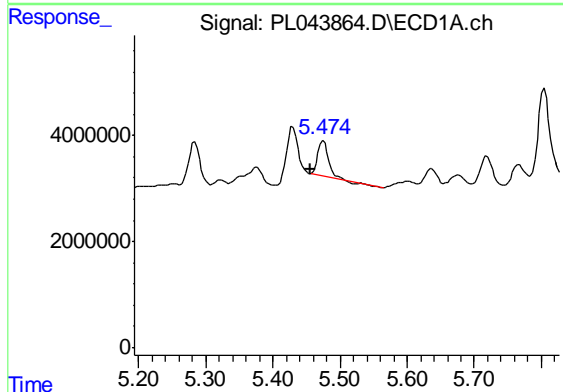
R.T.: 5.284 min
 Delta R.T.: 0.054 min
 Response: 8798880
 Conc: 1.38 ng/ml

Instrument :
 ECD_L
 ClientSampleId :
 FENCE-SOIL-PILE-1



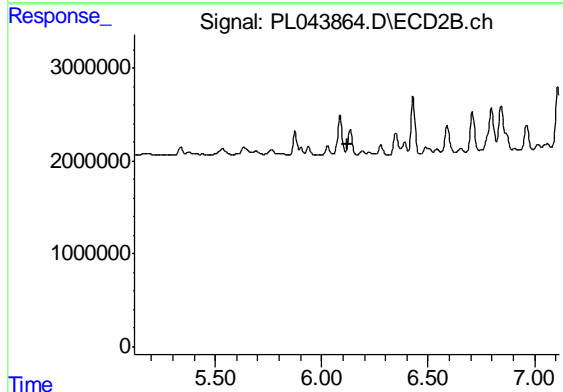
#8 Heptachlor epoxide

R.T.: 0.000 min
 Exp R.T. : 5.885 min
 Response: 0
 Conc: N.D.



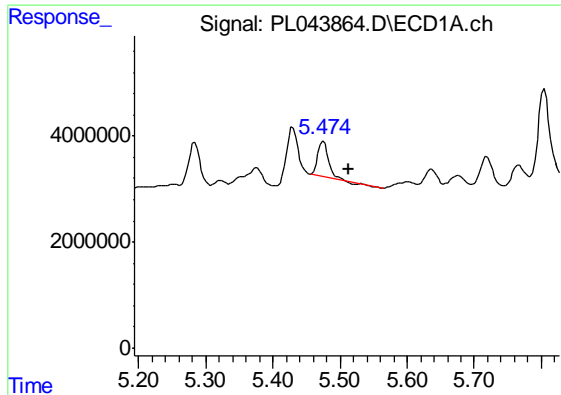
#10 gamma-Chlordane

R.T.: 5.475 min
 Delta R.T.: 0.020 min
 Response: 7200654
 Conc: 1.12 ng/ml



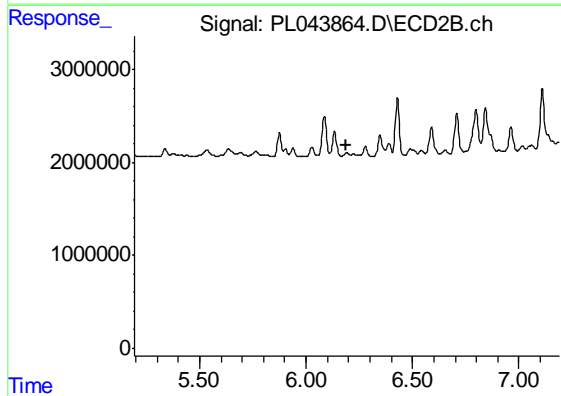
#10 gamma-Chlordane

R.T.: 0.000 min
 Exp R.T. : 6.119 min
 Response: 0
 Conc: N.D.

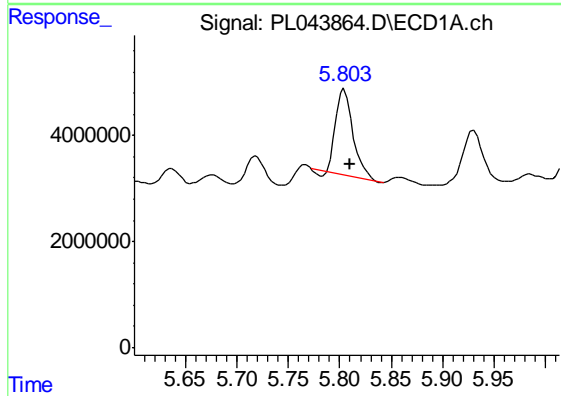


#11 alpha-Chlordane
 R.T.: 5.475 min
 Delta R.T.: -0.038 min
 Response: 7200654
 Conc: 1.14 ng/ml

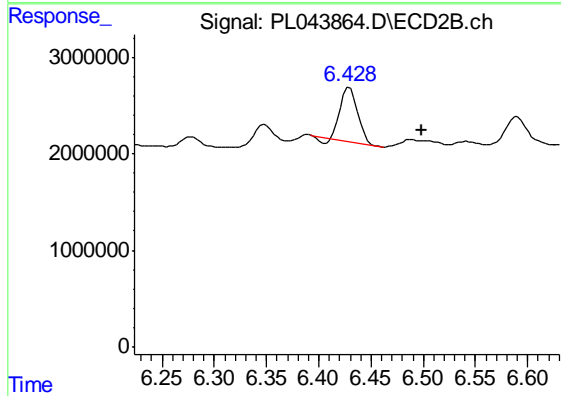
Instrument :
 ECD_L
 ClientSampleId :
 FENCE-SOIL-PILE-1



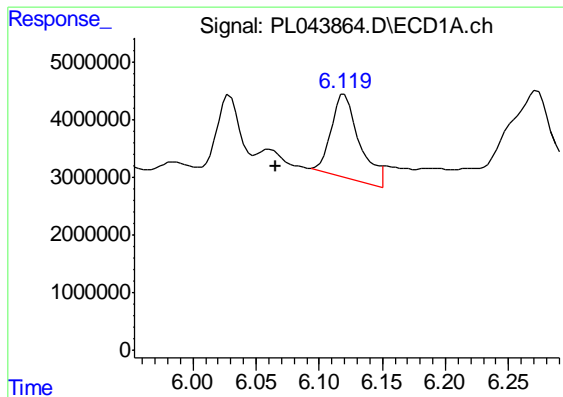
#11 alpha-Chlordane
 R.T.: 0.000 min
 Exp R.T. : 6.191 min
 Response: 0
 Conc: N.D.



#13 Dieldrin
 R.T.: 5.804 min
 Delta R.T.: -0.006 min
 Response: 19145124
 Conc: 3.07 ng/ml

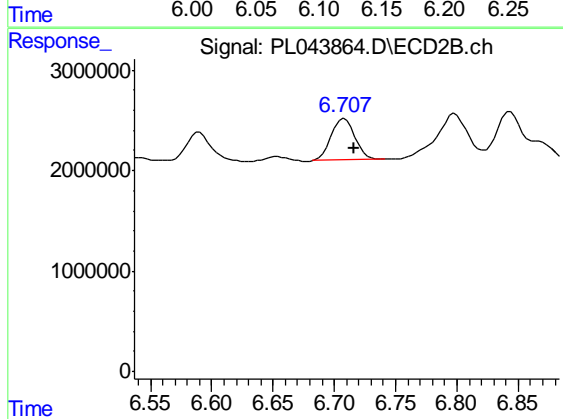


#13 Dieldrin
 R.T.: 6.430 min
 Delta R.T.: -0.069 min
 Response: 6094040
 Conc: 2.86 ng/ml

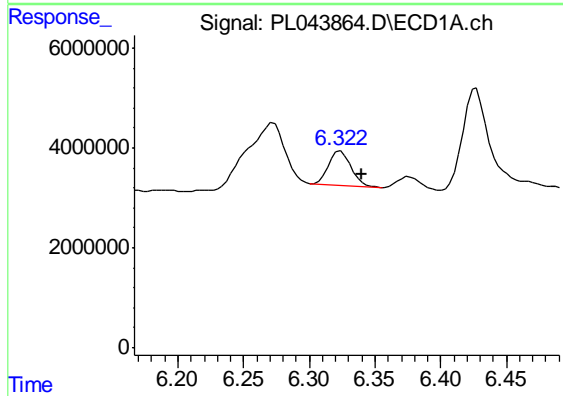


#14 Endrin
 R.T.: 6.120 min
 Delta R.T.: 0.054 min
 Response: 21883834
 Conc: 4.03 ng/ml

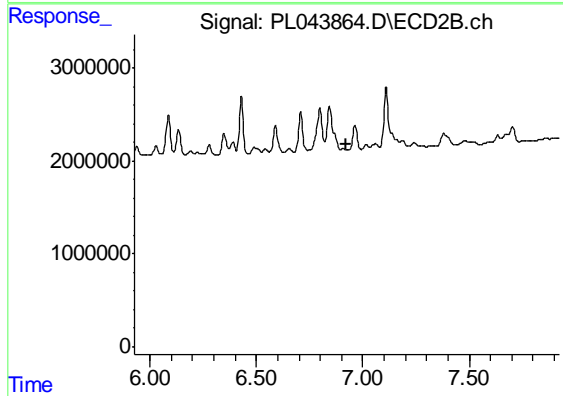
Instrument :
 ECD_L
 ClientSampleId :
 FENCE-SOIL-PILE-1



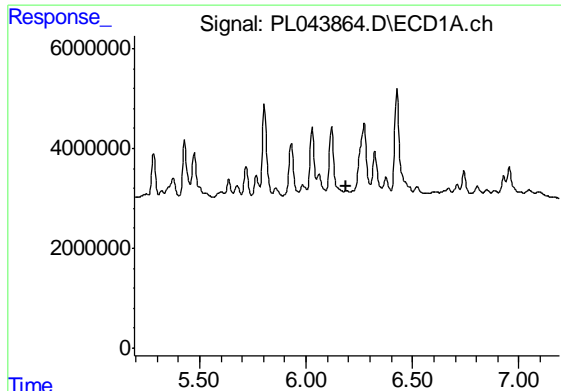
#14 Endrin
 R.T.: 6.708 min
 Delta R.T.: -0.008 min
 Response: 5619234
 Conc: 3.20 ng/ml



#15 Endosulfan II
 R.T.: 6.324 min
 Delta R.T.: -0.016 min
 Response: 8217128
 Conc: 1.58 ng/ml



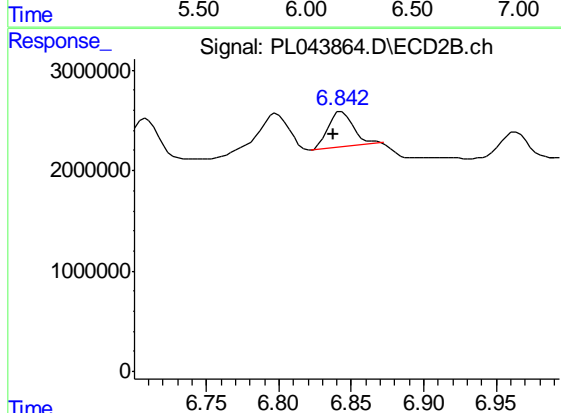
#15 Endosulfan II
 R.T.: 0.000 min
 Exp R.T. : 6.925 min
 Response: 0
 Conc: N.D.



#16 4,4'-DDD

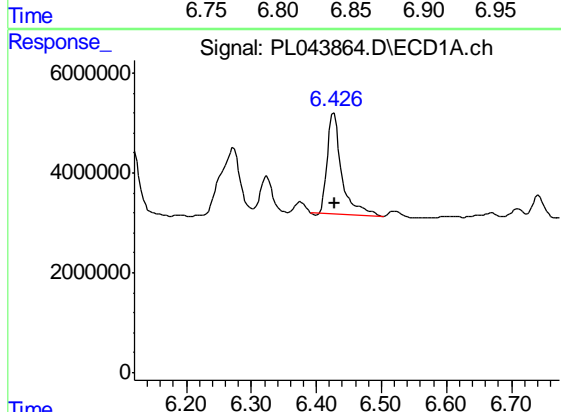
R.T.: 0.000 min
 Exp R.T. : 6.191 min
 Response: 0
 Conc: N.D.

Instrument :
 ECD_L
 ClientSampled :
 FENCE-SOIL-PILE-1



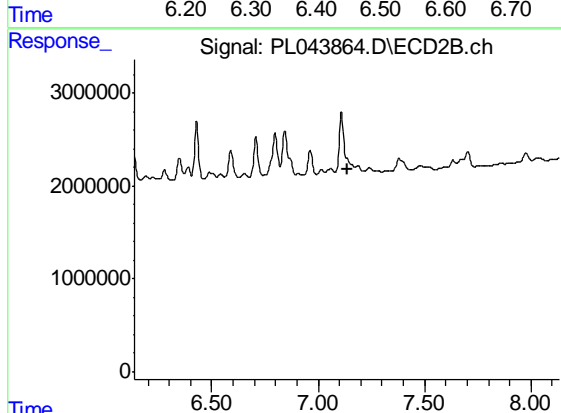
#16 4,4'-DDD

R.T.: 6.844 min
 Delta R.T.: 0.006 min
 Response: 4268816
 Conc: 2.83 ng/ml



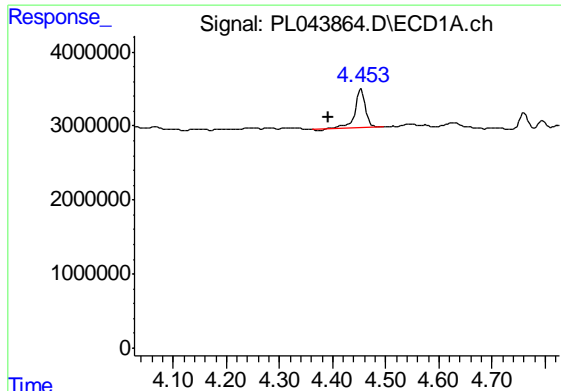
#17 4,4'-DDT

R.T.: 6.427 min
 Delta R.T.: -0.002 min
 Response: 30934177
 Conc: 6.78 ng/ml



#17 4,4'-DDT

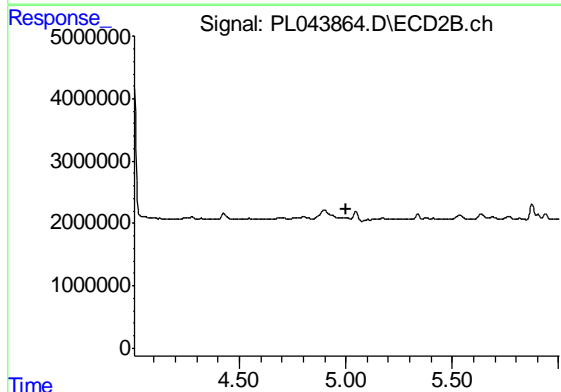
R.T.: 0.000 min
 Exp R.T. : 7.136 min
 Response: 0
 Conc: N.D.



#23 Chlordane-1

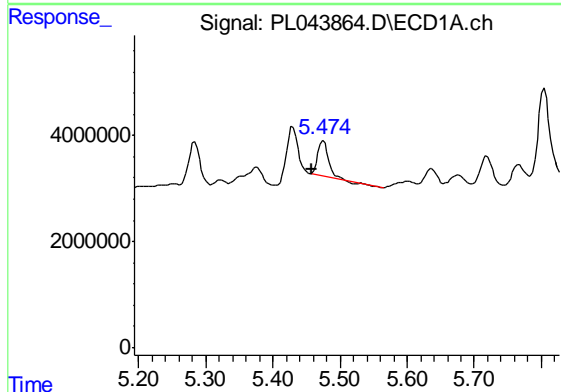
R.T.: 4.454 min
 Delta R.T.: 0.063 min
 Response: 7283605
 Conc: 32.56 ng/ml

Instrument :
 ECD_L
 ClientSampleId :
 FENCE-SOIL-PILE-1



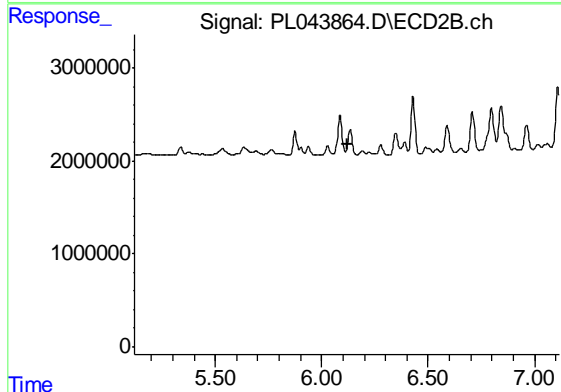
#23 Chlordane-1

R.T.: 0.000 min
 Exp R.T. : 5.005 min
 Response: 0
 Conc: N.D.



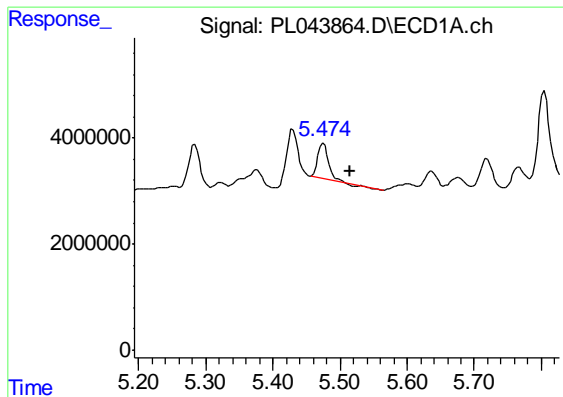
#25 Chlordane-3

R.T.: 5.475 min
 Delta R.T.: 0.018 min
 Response: 7200654
 Conc: 9.92 ng/ml



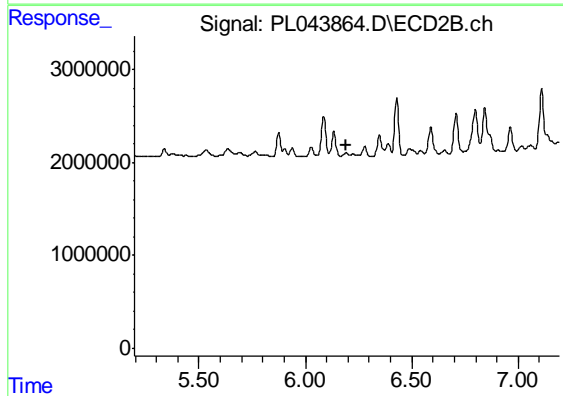
#25 Chlordane-3

R.T.: 0.000 min
 Exp R.T. : 6.119 min
 Response: 0
 Conc: N.D.

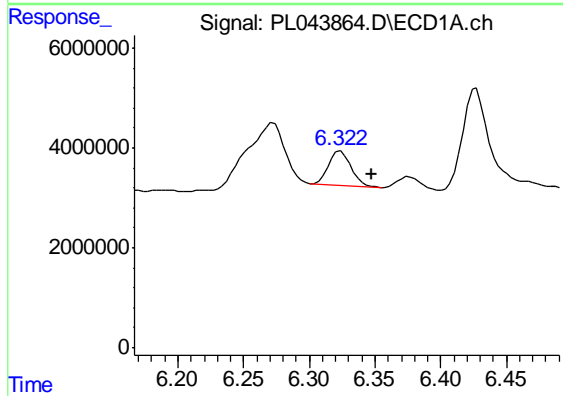


#26 Chlordane-4
 R.T.: 5.475 min
 Delta R.T.: -0.039 min
 Response: 7200654
 Conc: 11.30 ng/ml

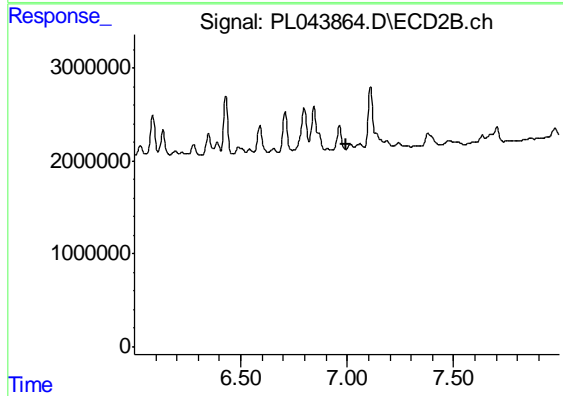
Instrument :
 ECD_L
 ClientSampleId :
 FENCE-SOIL-PILE-1



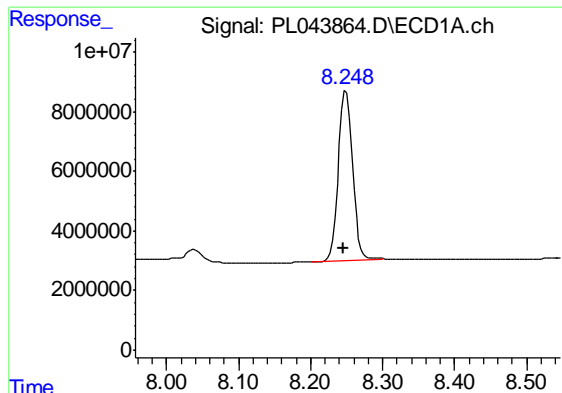
#26 Chlordane-4
 R.T.: 0.000 min
 Exp R.T. : 6.194 min
 Response: 0
 Conc: N.D.



#27 Chlordane-5
 R.T.: 6.324 min
 Delta R.T.: -0.024 min
 Response: 8217128
 Conc: 41.24 ng/ml



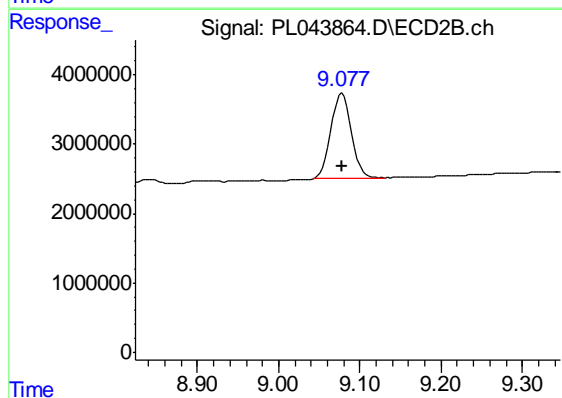
#27 Chlordane-5
 R.T.: 0.000 min
 Exp R.T. : 6.998 min
 Response: 0
 Conc: N.D.



#28 Decachlorobiphenyl

R.T.: 8.250 min
Delta R.T.: 0.004 min
Response: 78259252
Conc: 13.85 ng/ml

Instrument :
ECD_L
ClientSampleId :
FENCE-SOIL-PILE-1



#28 Decachlorobiphenyl

R.T.: 9.078 min
Delta R.T.: 0.000 min
Response: 21669291
Conc: 13.64 ng/ml