

Data Path : Z:\pestpcbsrv\HPCHEM1\ECD_L\Data\PL011420\
 Data File : PL055734.D
 Signal(s) : Signal #1: ECD1A.ch Signal #2: ECD2B.ch
 Acq On : 14 Jan 2020 14:27
 Operator : AJ\MA
 Sample : L1108-03
 Misc :
 ALS Vial : 13 Sample Multiplier: 1

Instrument :
 ECD_L
 ClientSampleId :

Integration File signal 1: autoint1.e
 Integration File signal 2: autoint2.e
 Quant Time: Jan 14 22:06:12 2020
 Quant Method : Z:\pestpcbsrv\HPCHEM1\ECD_L\methods\PL011020.M
 Quant Title : GC Extractables
 QLast Update : Fri Jan 10 00:58:33 2020
 Response via : Initial Calibration
 Integrator: ChemStation

Volume Inj. : 1 µl
 Signal #1 Phase : ZB-MR2 Signal #2 Phase: ZB-MR1
 Signal #1 Info : 30M x 0.32mm x0.2 Signal #2 Info : 30M x 0.32mm x0.5µm

Compound	RT#1	RT#2	Resp#1	Resp#2	ng/ml	ng/ml

System Monitoring Compounds						
1) SA Tetrachlo...	3.491	3.968	121.4E6	36342469	13.138	13.719
28) SA Decachlor...	8.237	8.957	106.8E6	27933106	12.163	13.435

Target Compounds

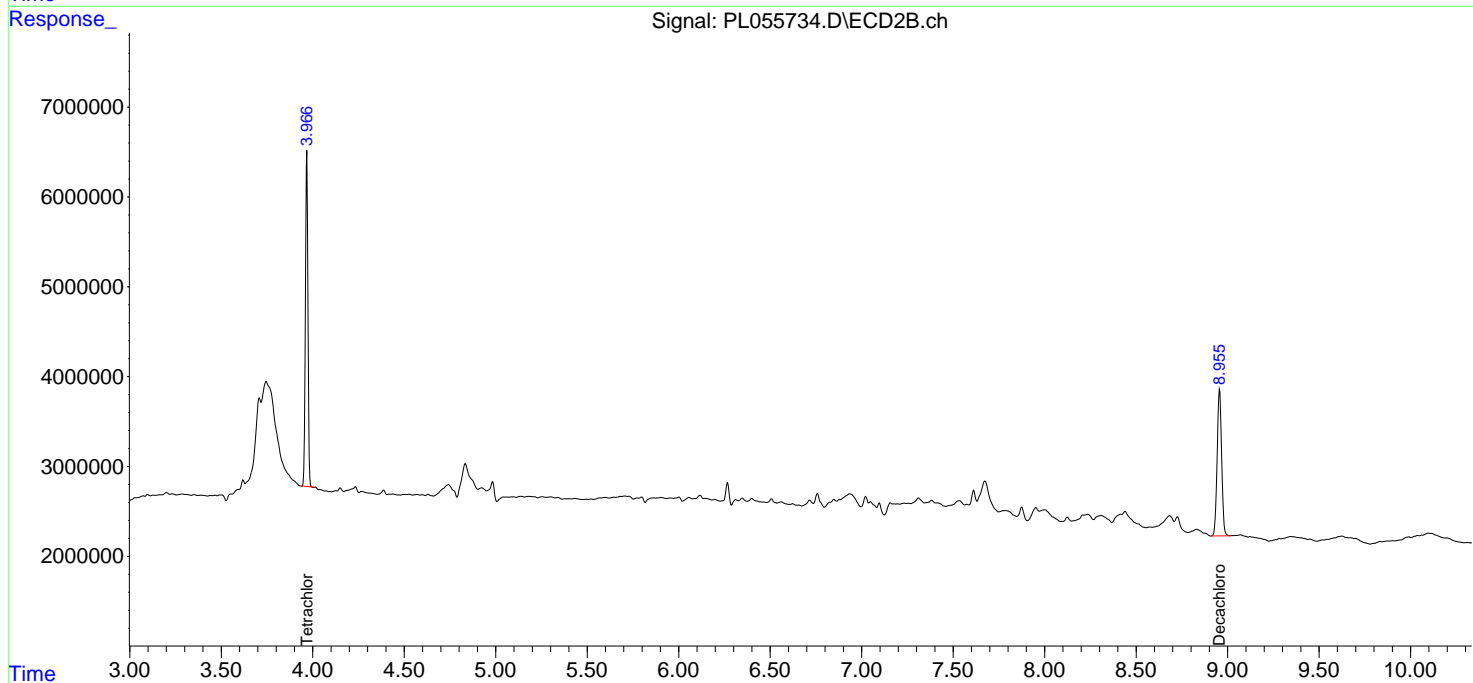
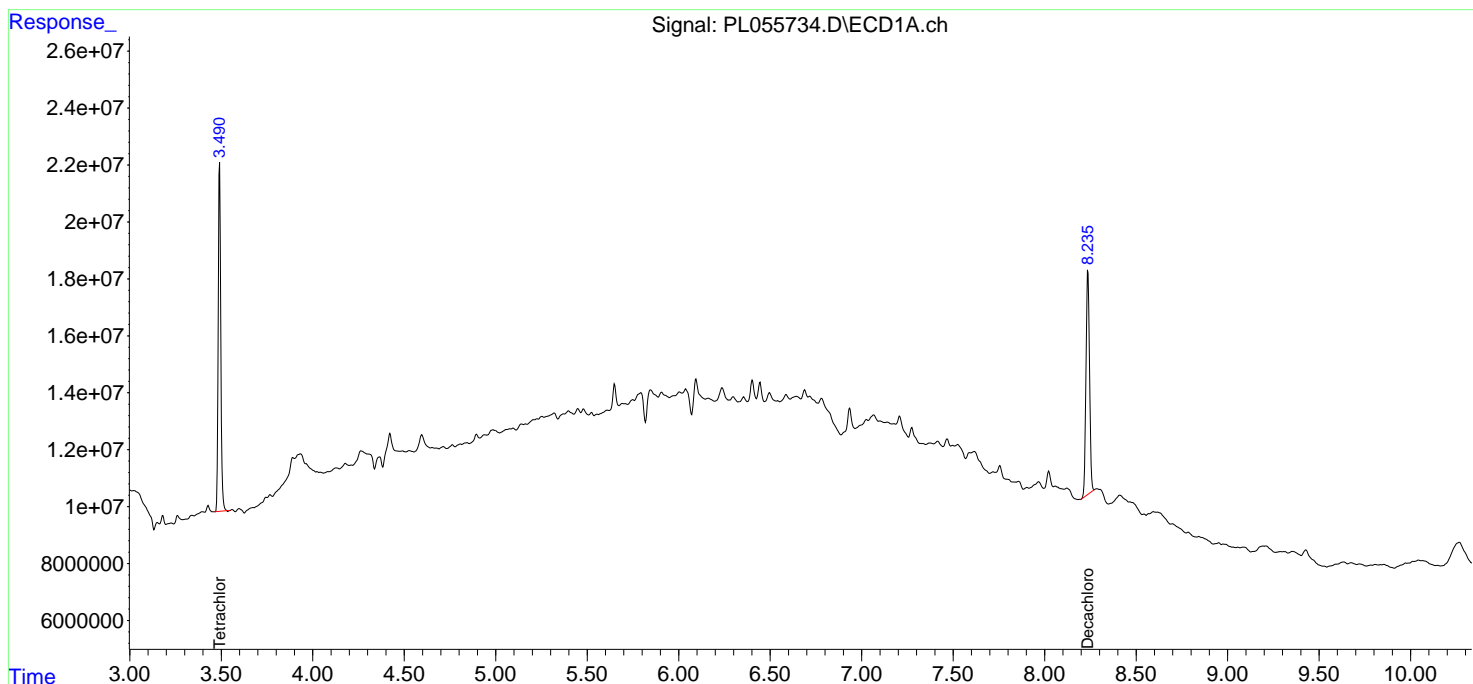
(f)=RT Delta > 1/2 Window (#)=Amounts differ by > 25% (m)=manual int.

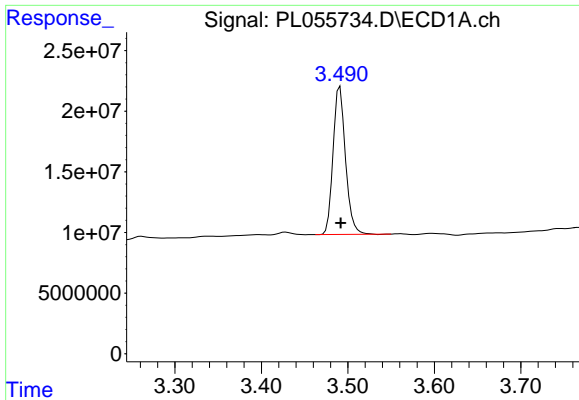
Data Path : Z:\pestpcbsrv\HPCHEM1\ECD_L\Data\PL011420\
Data File : PL055734.D
Signal(s) : Signal #1: ECD1A.ch Signal #2: ECD2B.ch
Acq On : 14 Jan 2020 14:27
Operator : AJ\MA
Sample : L1108-03
Misc :
ALS Vial : 13 Sample Multiplier: 1

Instrument :
ECD_L
ClientSampled :

Integration File signal 1: autoint1.e
Integration File signal 2: autoint2.e
Quant Time: Jan 14 22:06:12 2020
Quant Method : Z:\pestpcbsrv\HPCHEM1\ECD_L\methods\PL011020.M
Quant Title : GC Extractables
QLast Update : Fri Jan 10 00:58:33 2020
Response via : Initial Calibration
Integrator: ChemStation

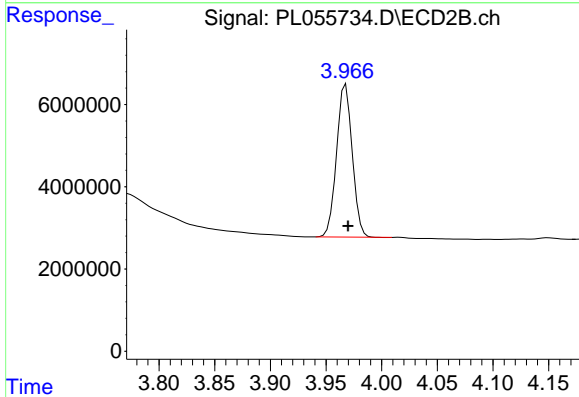
Volume Inj. : 1 µl
Signal #1 Phase : ZB-MR2 Signal #2 Phase: ZB-MR1
Signal #1 Info : 30M x 0.32mm x0.2 Signal #2 Info : 30M x 0.32mm x0.5µm



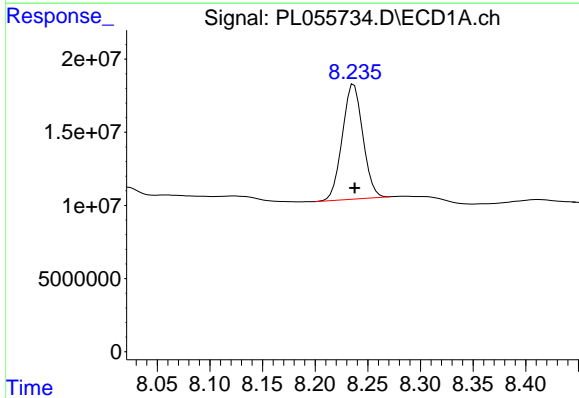


#1 Tetrachloro-m-xylene
 R.T.: 3.491 min
 Delta R.T.: 0.000 min
 Response: 121406252
 Conc: 13.14 ng/ml

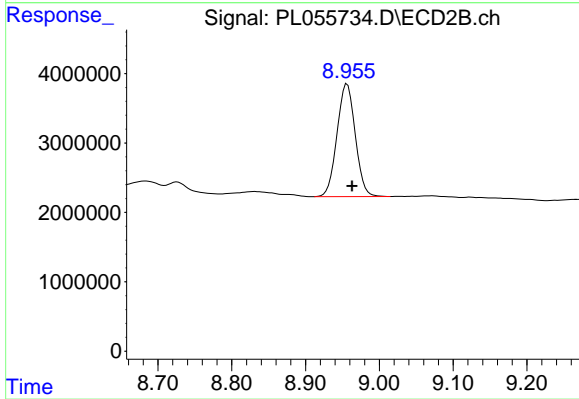
Instrument :
 ECD_L
 ClientSampleId :



#1 Tetrachloro-m-xylene
 R.T.: 3.968 min
 Delta R.T.: -0.002 min
 Response: 36342469
 Conc: 13.72 ng/ml



#28 Decachlorobiphenyl
 R.T.: 8.237 min
 Delta R.T.: 0.000 min
 Response: 106816293
 Conc: 12.16 ng/ml



#28 Decachlorobiphenyl
 R.T.: 8.957 min
 Delta R.T.: -0.007 min
 Response: 27933106
 Conc: 13.44 ng/ml