

Data Path : Z:\pestpcbsrv\HPCHEM1\ECD_L\Data\PL011420\
 Data File : PL055738.D
 Signal(s) : Signal #1: ECD1A.ch Signal #2: ECD2B.ch
 Acq On : 14 Jan 2020 15:23
 Operator : AJ\MA
 Sample : PB126086BL
 Misc :
 ALS Vial : 15 Sample Multiplier: 1

Instrument :
 ECD_L
 ClientSampleId :

Integration File signal 1: autoint1.e
 Integration File signal 2: autoint2.e
 Quant Time: Jan 14 22:06:49 2020
 Quant Method : Z:\pestpcbsrv\HPCHEM1\ECD_L\methods\PL011020.M
 Quant Title : GC Extractables
 QLast Update : Fri Jan 10 00:58:33 2020
 Response via : Initial Calibration
 Integrator: ChemStation

Volume Inj. : 1 µl
 Signal #1 Phase : ZB-MR2 Signal #2 Phase: ZB-MR1
 Signal #1 Info : 30M x 0.32mm x0.2 Signal #2 Info : 30M x 0.32mm x0.5µm

Compound	RT#1	RT#2	Resp#1	Resp#2	ng/ml	ng/ml

System Monitoring Compounds						
1) SA Tetrachlo...	3.491	3.968	227.3E6	66580669	24.603	25.133
28) SA Decachlor...	8.236	8.956	202.0E6	50839463	22.997	24.453
Target Compounds						
25) Chlordane-3	5.401f	0.000	143.7E6	0	122.097	N.D. #

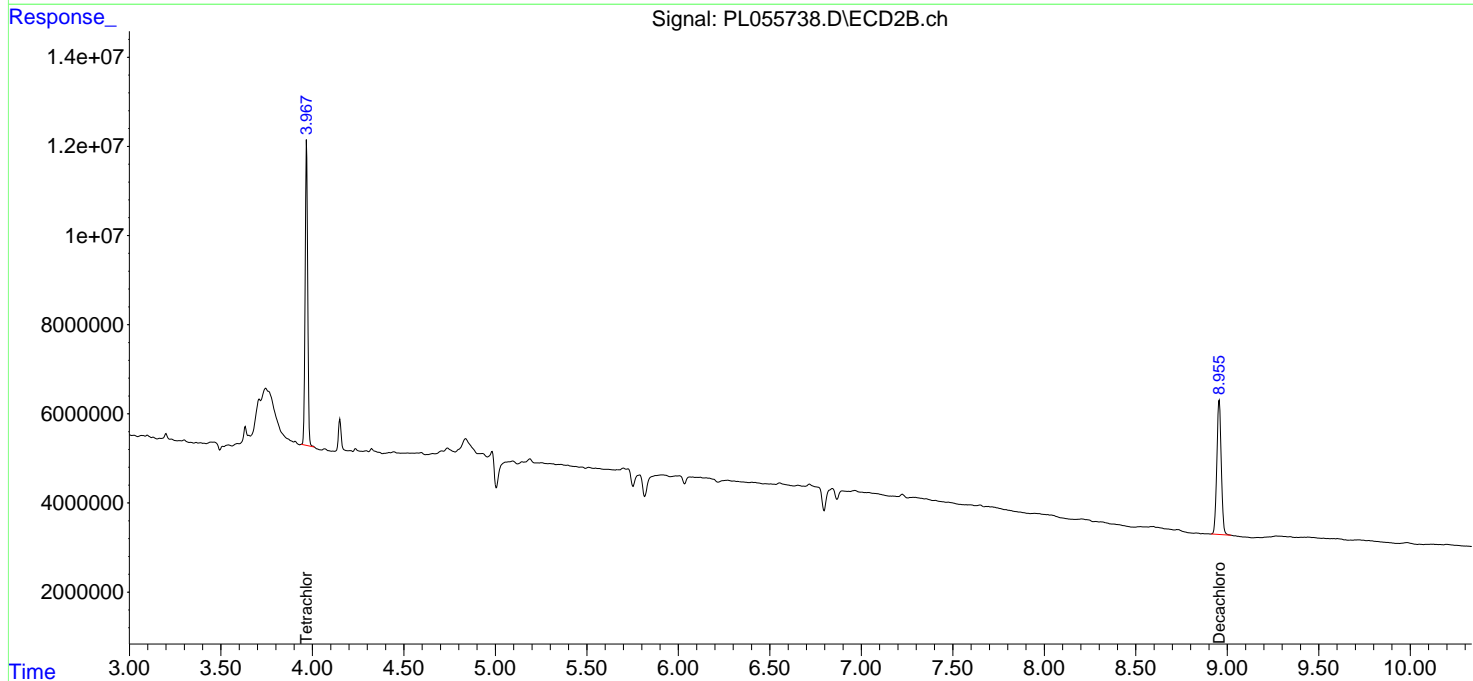
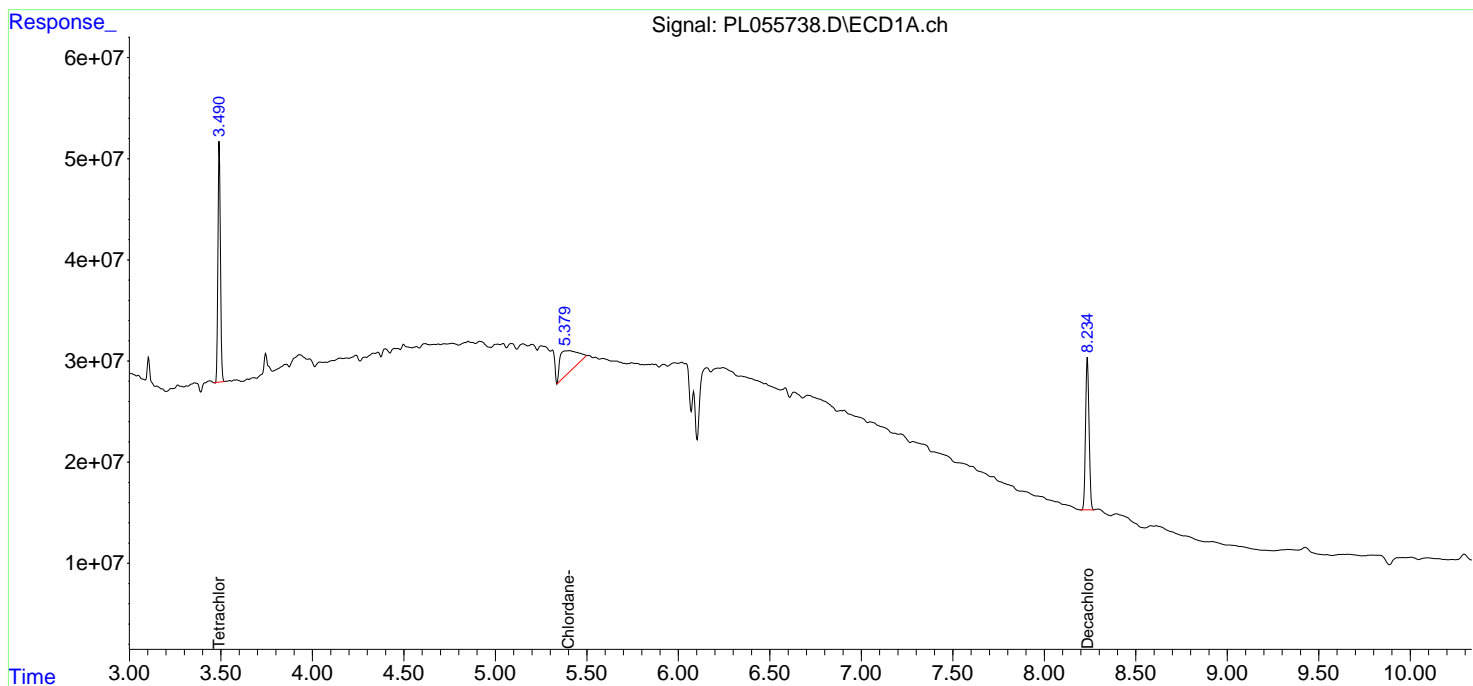
(f)=RT Delta > 1/2 Window (#)=Amounts differ by > 25% (m)=manual int.

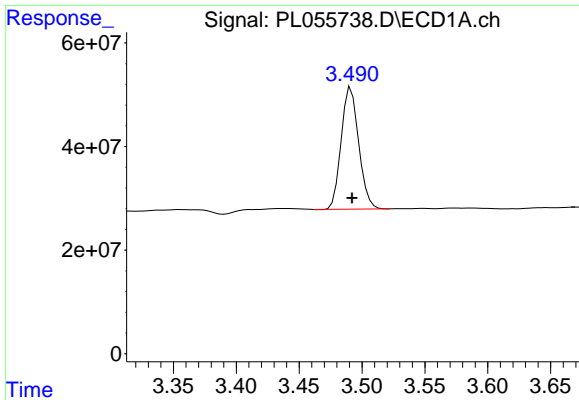
Data Path : Z:\pestpcbsrv\HPCHEM1\ECD_L\Data\PL011420\
 Data File : PL055738.D
 Signal(s) : Signal #1: ECD1A.ch Signal #2: ECD2B.ch
 Acq On : 14 Jan 2020 15:23
 Operator : AJ\MA
 Sample : PB126086BL
 Misc :
 ALS Vial : 15 Sample Multiplier: 1

Instrument :
 ECD_L
 ClientSampled :

Integration File signal 1: autoint1.e
 Integration File signal 2: autoint2.e
 Quant Time: Jan 14 22:06:49 2020
 Quant Method : Z:\pestpcbsrv\HPCHEM1\ECD_L\methods\PL011020.M
 Quant Title : GC Extractables
 QLast Update : Fri Jan 10 00:58:33 2020
 Response via : Initial Calibration
 Integrator: ChemStation

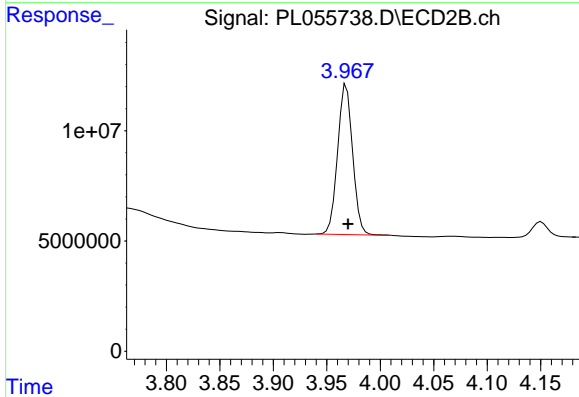
Volume Inj. : 1 µl
 Signal #1 Phase : ZB-MR2 Signal #2 Phase: ZB-MR1
 Signal #1 Info : 30M x 0.32mm x0.2 Signal #2 Info : 30M x 0.32mm x0.5µm



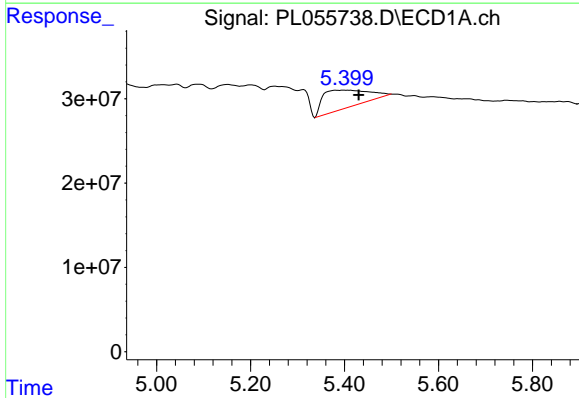


#1 Tetrachloro-m-xylene
 R.T.: 3.491 min
 Delta R.T.: 0.000 min
 Response: 227348978
 Conc: 24.60 ng/ml

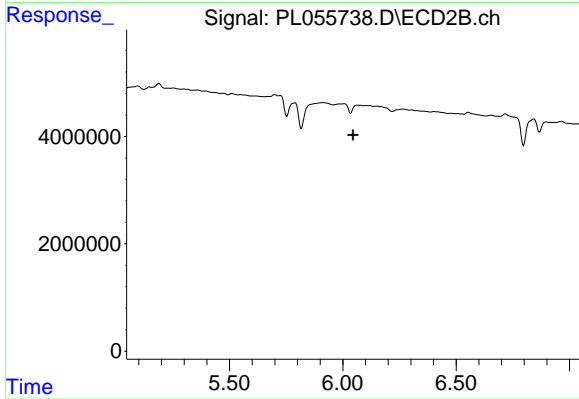
Instrument :
 ECD_L
 ClientSampleId :



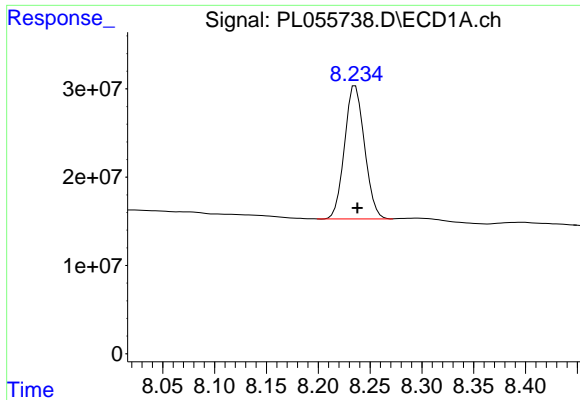
#1 Tetrachloro-m-xylene
 R.T.: 3.968 min
 Delta R.T.: -0.001 min
 Response: 66580669
 Conc: 25.13 ng/ml



#25 Chlordane-3
 R.T.: 5.401 min
 Delta R.T.: -0.030 min
 Response: 143718532
 Conc: 122.10 ng/ml



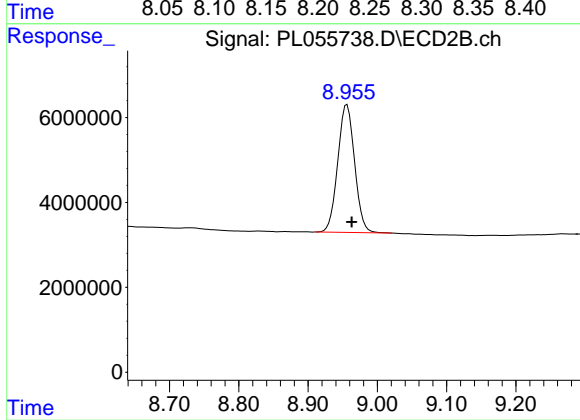
#25 Chlordane-3
 R.T.: 0.000 min
 Exp R.T.: 6.046 min
 Response: 0
 Conc: N.D.



#28 Decachlorobiphenyl

R.T.: 8.236 min
Delta R.T.: -0.002 min
Response: 201957310
Conc: 23.00 ng/ml

Instrument :
ECD_L
ClientSampleId :



#28 Decachlorobiphenyl

R.T.: 8.956 min
Delta R.T.: -0.007 min
Response: 50839463
Conc: 24.45 ng/ml