

Data Path : Z:\pestpcbsrv\HPCHEM1\ECD_L\Data\PL011420\
 Data File : PL055730.D
 Signal(s) : Signal #1: ECD1A.ch Signal #2: ECD2B.ch
 Acq On : 14 Jan 2020 13:30
 Operator : AJ\MA
 Sample : L1004-07
 Misc :
 ALS Vial : 9 Sample Multiplier: 1

Instrument :
 ECD_L
 ClientSampleId :
 BU-RO-229

Manual Integrations
 APPROVED

mohammad
 1/15/2020 4:13:34 PM

Integration File signal 1: autoint1.e
 Integration File signal 2: autoint2.e
 Quant Time: Jan 14 22:05:25 2020
 Quant Method : Z:\pestpcbsrv\HPCHEM1\ECD_L\methods\PL011020.M
 Quant Title : GC Extractables
 QLast Update : Fri Jan 10 00:58:33 2020
 Response via : Initial Calibration
 Integrator: ChemStation

Volume Inj. : 1 µl
 Signal #1 Phase : ZB-MR2 Signal #2 Phase: ZB-MR1
 Signal #1 Info : 30M x 0.32mm x0.2 Signal #2 Info : 30M x 0.32mm x0.5µm

Compound	RT#1	RT#2	Resp#1	Resp#2	ng/ml	ng/ml

System Monitoring Compounds						
1) SA Tetrachlo...	3.490	3.968	152.9E6	41627340	16.545	15.714
28) SA Decachlor...	8.235	8.954	143.4E6	37893148	16.329	18.226
Target Compounds						
4) MA Heptachlor	4.512	5.129	36913677	3512444	2.581m	1.107m#
10) B gamma-Chl...	5.430	6.042	11138067	5493303	0.832	1.951 #
11) B alpha-Chl...	5.487	6.115	19194540	11567273	1.462	4.115 #
12) B 4,4'-DDE	5.650	6.268	41972632	11703822	3.376	4.405 #
16) A 4,4'-DDD	6.163	6.754	5659792	1718261	0.597m	0.829m#
17) MA 4,4'-DDT	6.403	7.047	7514679	1526238	0.875m	0.774m

(f)=RT Delta > 1/2 Window (#)=Amounts differ by > 25% (m)=manual int.

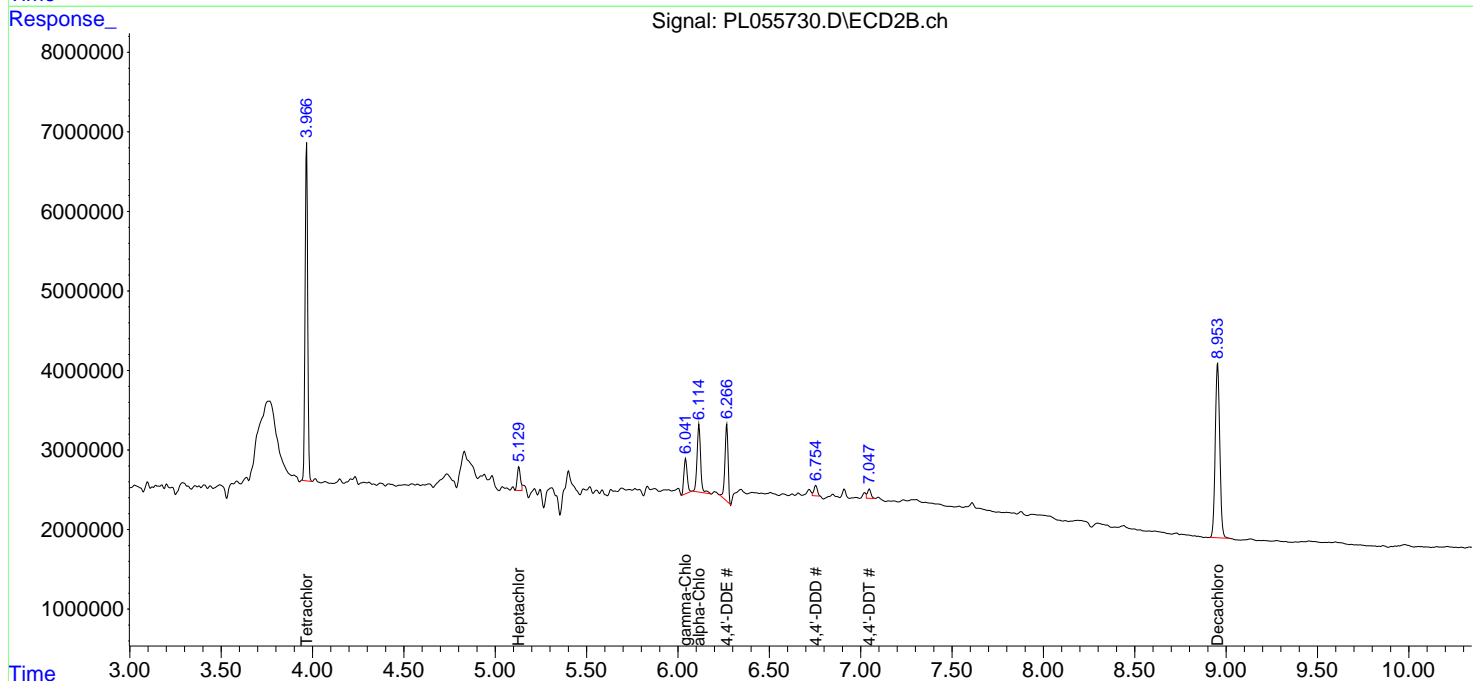
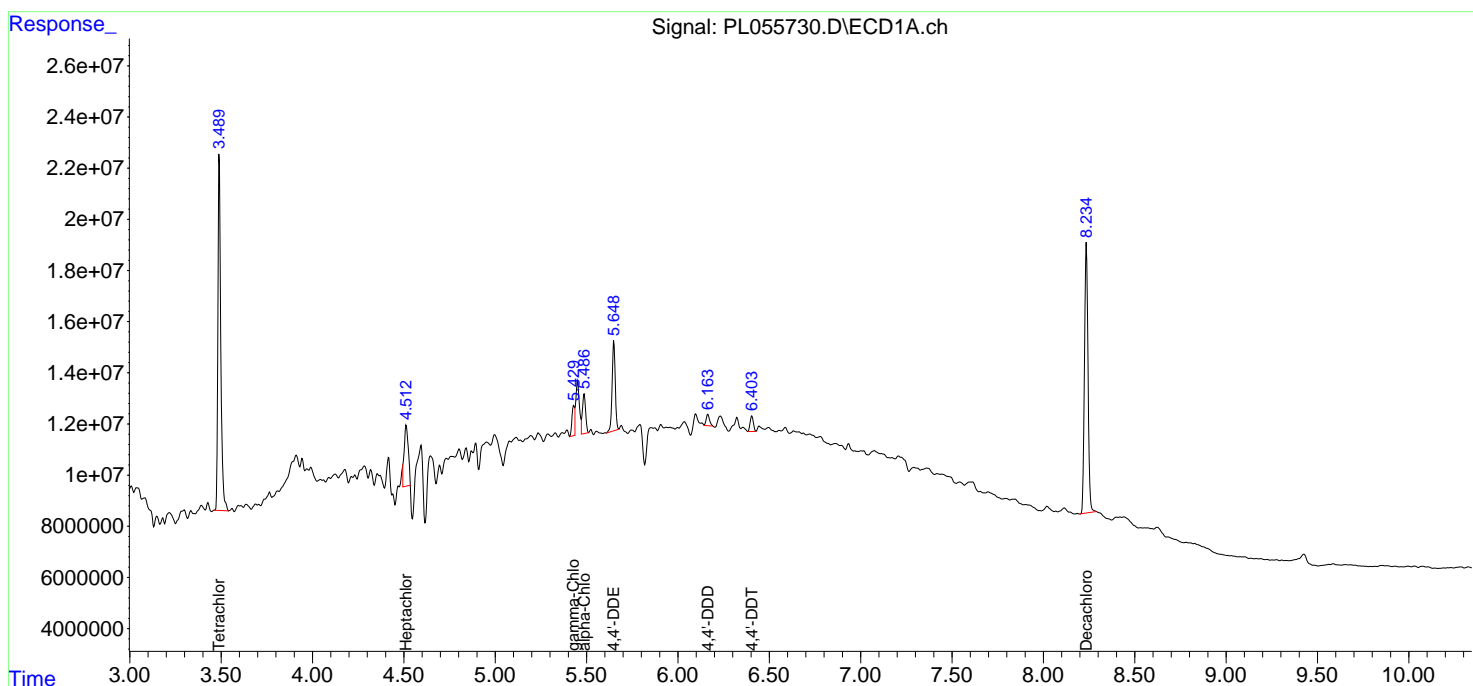
Data Path : Z:\pestpcbsrv\HPCHEM1\ECD_L\Data\PL011420\
 Data File : PL055730.D
 Signal(s) : Signal #1: ECD1A.ch Signal #2: ECD2B.ch
 Acq On : 14 Jan 2020 13:30
 Operator : AJ\MA
 Sample : L1004-07
 Misc :
 ALS Vial : 9 Sample Multiplier: 1

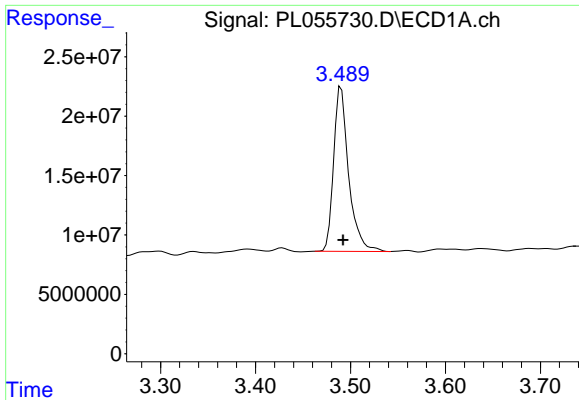
Instrument :
 ECD_L
 ClientSampled :
 BU-RO-229

Manual Integrations
APPROVED
 mohammad
 1/15/2020 4:13:34 PM

Integration File signal 1: autoint1.e
 Integration File signal 2: autoint2.e
 Quant Time: Jan 14 22:05:25 2020
 Quant Method : Z:\pestpcbsrv\HPCHEM1\ECD_L\methods\PL011020.M
 Quant Title : GC Extractables
 QLast Update : Fri Jan 10 00:58:33 2020
 Response via : Initial Calibration
 Integrator: ChemStation

Volume Inj. : 1 µl
 Signal #1 Phase : ZB-MR2 Signal #2 Phase: ZB-MR1
 Signal #1 Info : 30M x 0.32mm x0.2 Signal #2 Info : 30M x 0.32mm x0.5µm

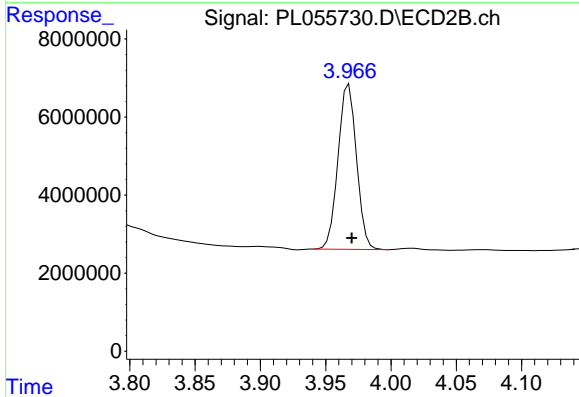




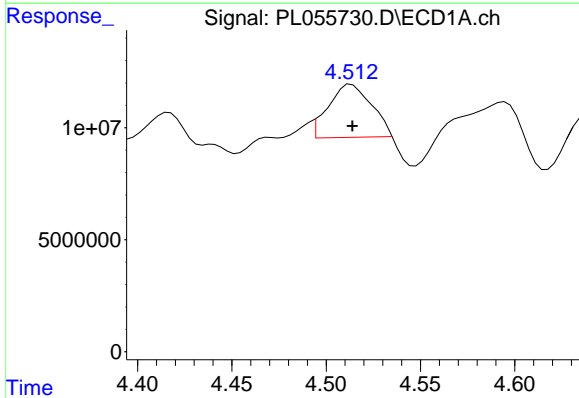
#1 Tetrachloro-m-xylene
 R.T.: 3.490 min
 Delta R.T.: -0.002 min
 Response: 152886035
 Conc: 16.54 ng/ml

Instrument :
 ECD_L
ClientSampled :
 BU-RO-229

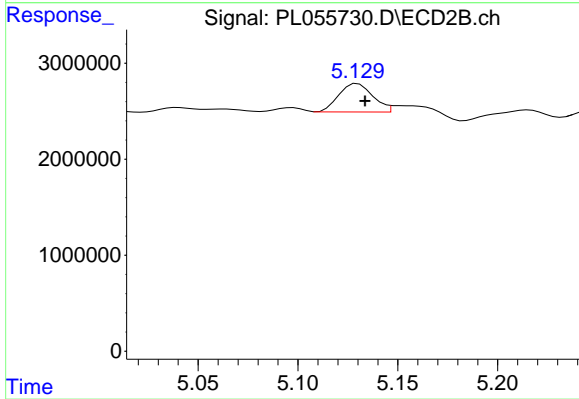
Manual Integrations
APPROVED
 mohammad
 1/15/2020 4:13:34 PM



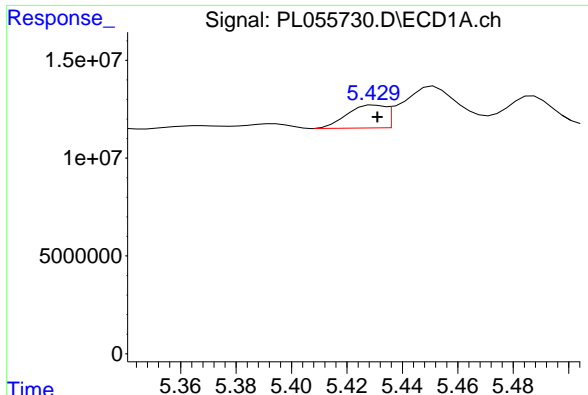
#1 Tetrachloro-m-xylene
 R.T.: 3.968 min
 Delta R.T.: -0.002 min
 Response: 41627340
 Conc: 15.71 ng/ml



#4 Heptachlor
 R.T.: 4.512 min
 Delta R.T.: -0.002 min
 Response: 36913677
 Conc: 2.58 ng/ml m



#4 Heptachlor
 R.T.: 5.129 min
 Delta R.T.: -0.005 min
 Response: 3512444
 Conc: 1.11 ng/ml m



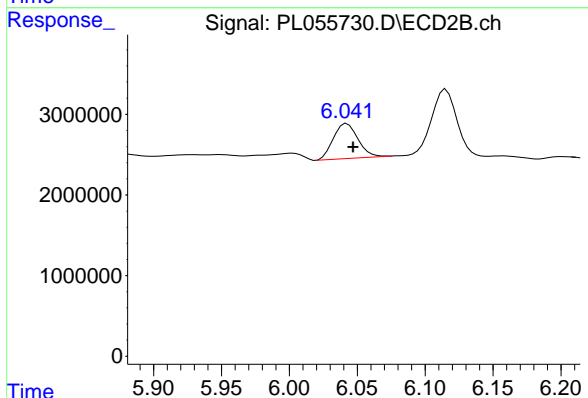
#10 gamma-Chlordane

R.T.: 5.430 min
 Delta R.T.: 0.000 min
 Response: 11138067
 Conc: 0.83 ng/ml

Instrument :
 ECD_L
 ClientSampled :
 BU-RO-229

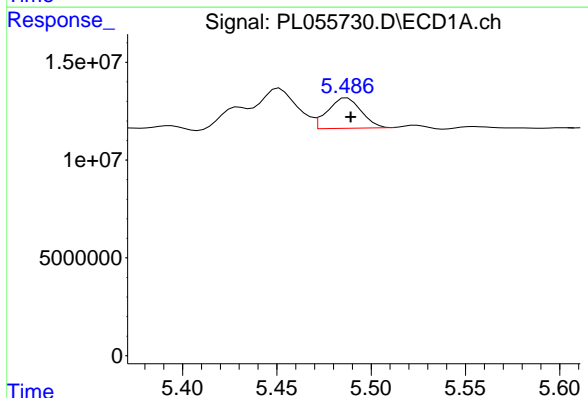
Manual Integrations
 APPROVED

mohammad
 1/15/2020 4:13:34 PM



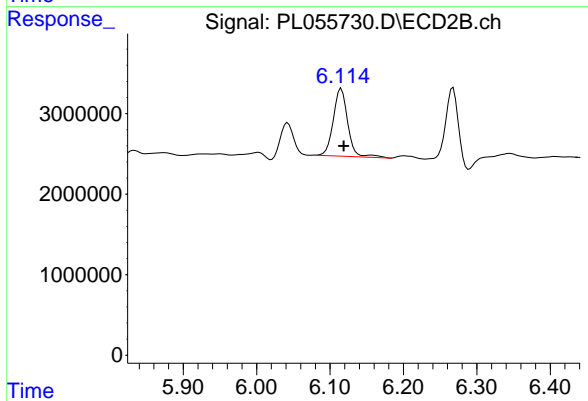
#10 gamma-Chlordane

R.T.: 6.042 min
 Delta R.T.: -0.004 min
 Response: 5493303
 Conc: 1.95 ng/ml



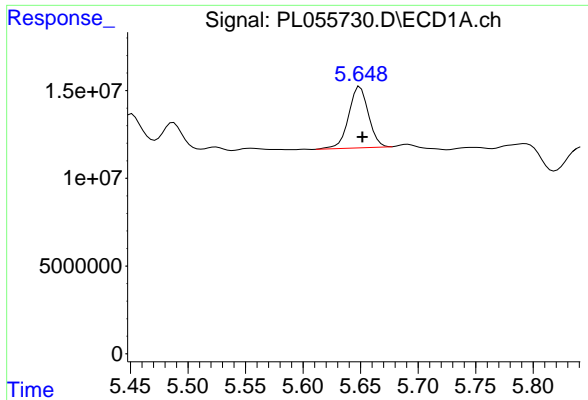
#11 alpha-Chlordane

R.T.: 5.487 min
 Delta R.T.: -0.002 min
 Response: 19194540
 Conc: 1.46 ng/ml



#11 alpha-Chlordane

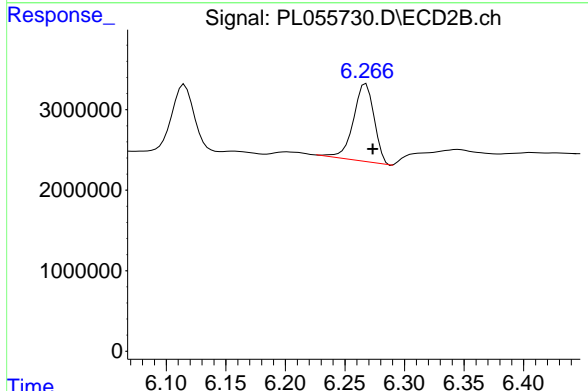
R.T.: 6.115 min
 Delta R.T.: -0.003 min
 Response: 11567273
 Conc: 4.12 ng/ml



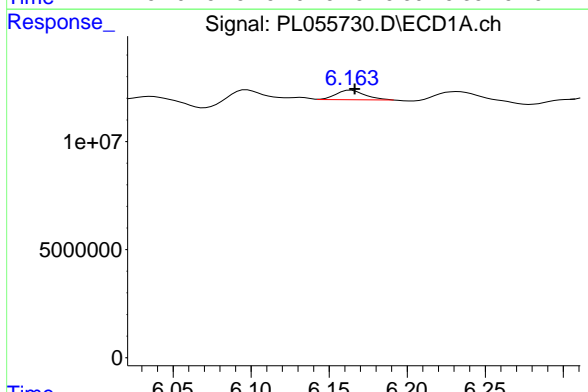
#12 4,4'-DDE
 R.T.: 5.650 min
 Delta R.T.: -0.002 min
 Response: 41972632
 Conc: 3.38 ng/ml

Instrument :
 ECD_L
 ClientSampled :
 BU-RO-229

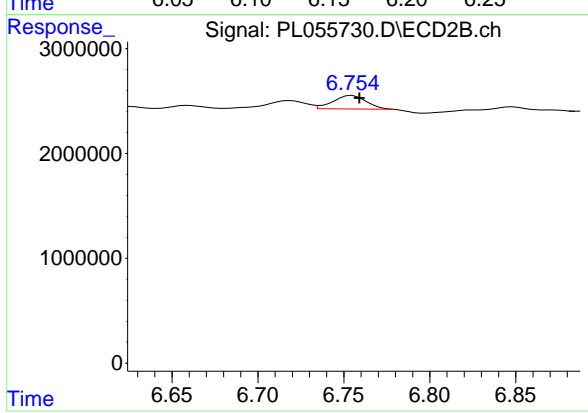
Manual Integrations
APPROVED
 mohammad
 1/15/2020 4:13:34 PM



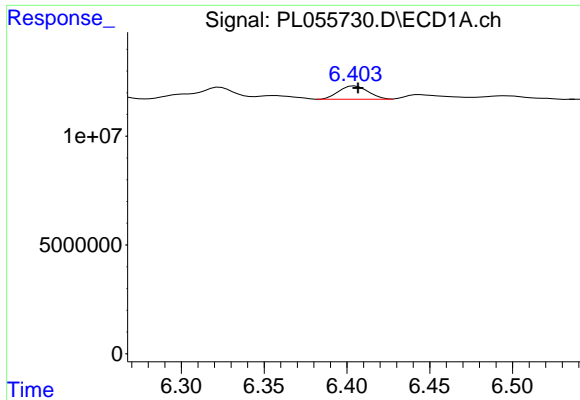
#12 4,4'-DDE
 R.T.: 6.268 min
 Delta R.T.: -0.006 min
 Response: 11703822
 Conc: 4.41 ng/ml



#16 4,4'-DDD
 R.T.: 6.163 min
 Delta R.T.: -0.003 min
 Response: 5659792
 Conc: 0.60 ng/ml m



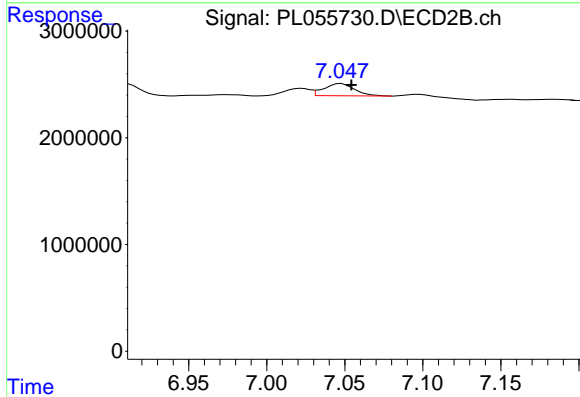
#16 4,4'-DDD
 R.T.: 6.754 min
 Delta R.T.: -0.005 min
 Response: 1718261
 Conc: 0.83 ng/ml m



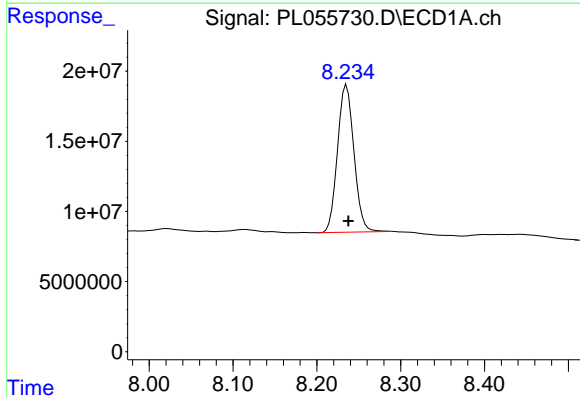
#17 4,4'-DDT
R.T.: 6.403 min
Delta R.T.: -0.003 min
Response: 7514679
Conc: 0.88 ng/ml m

Instrument :
ECD_L
ClientSampled :
BU-RO-229

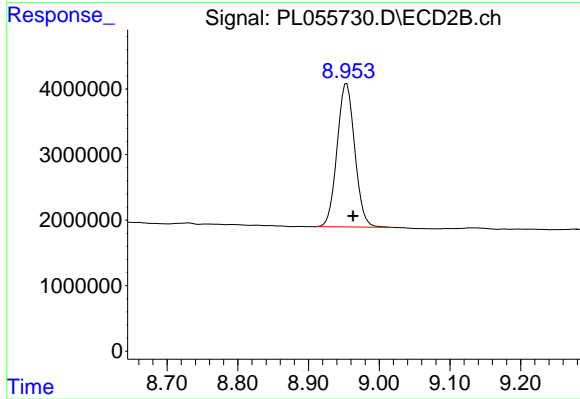
Manual Integrations
APPROVED
mohammad
1/15/2020 4:13:34 PM



#17 4,4'-DDT
R.T.: 7.047 min
Delta R.T.: -0.008 min
Response: 1526238
Conc: 0.77 ng/ml m



#28 Decachlorobiphenyl
R.T.: 8.235 min
Delta R.T.: -0.002 min
Response: 143395365
Conc: 16.33 ng/ml



#28 Decachlorobiphenyl
R.T.: 8.954 min
Delta R.T.: -0.009 min
Response: 37893148
Conc: 18.23 ng/ml