

Data Path : Z:\pestpcbsrv\HPCHEM1\ECD_L\Data\PL011422\
 Data File : PL071998.D
 Signal(s) : Signal #1: ECD1A.ch Signal #2: ECD2B.ch
 Acq On : 14 Jan 2022 14:22
 Operator : AR\AJ
 Sample : N1130-04
 Misc :
 ALS Vial : 9 Sample Multiplier: 1

Instrument :
 ECD_L
ClientSampleId :
 TP-5D

Manual Integrations
APPROVED
 Reviewed By :Abdul Mirza 01/17/2022
 Supervised By :Ankita Jodhani 01/17/2022

Integration File signal 1: autoint1.e
 Integration File signal 2: autoint2.e
 Quant Time: Jan 14 21:35:34 2022
 Quant Method : Z:\pestpcbsrv\HPCHEM1\ECD_L\methods\PL010422.M
 Quant Title : GC Extractables
 QLast Update : Thu Jan 06 10:33:37 2022
 Response via : Initial Calibration
 Integrator: ChemStation

Volume Inj. : 1 µl
 Signal #1 Phase : ZB-MR2 Signal #2 Phase: ZB-MR1
 Signal #1 Info : 30M x 0.32mm x0.2 Signal #2 Info : 30M x 0.32mm x0.5µm

Compound	RT#1	RT#2	Resp#1	Resp#2	ng/ml	ng/ml

System Monitoring Compounds						
1) SA Tetrachlo...	4.558	5.494	11163873	31646245	24.167	25.757
28) SA Decachlor...	10.320	11.390	16385304	29022222	22.662m	24.491

Target Compounds

(f)=RT Delta > 1/2 Window (#)=Amounts differ by > 25% (m)=manual int.

Data Path : Z:\pestpcbsrv\HPCHEM1\ECD_L\Data\PL011422\
 Data File : PL071998.D
 Signal(s) : Signal #1: ECD1A.ch Signal #2: ECD2B.ch
 Acq On : 14 Jan 2022 14:22
 Operator : AR\AJ
 Sample : N1130-04
 Misc :
 ALS Vial : 9 Sample Multiplier: 1

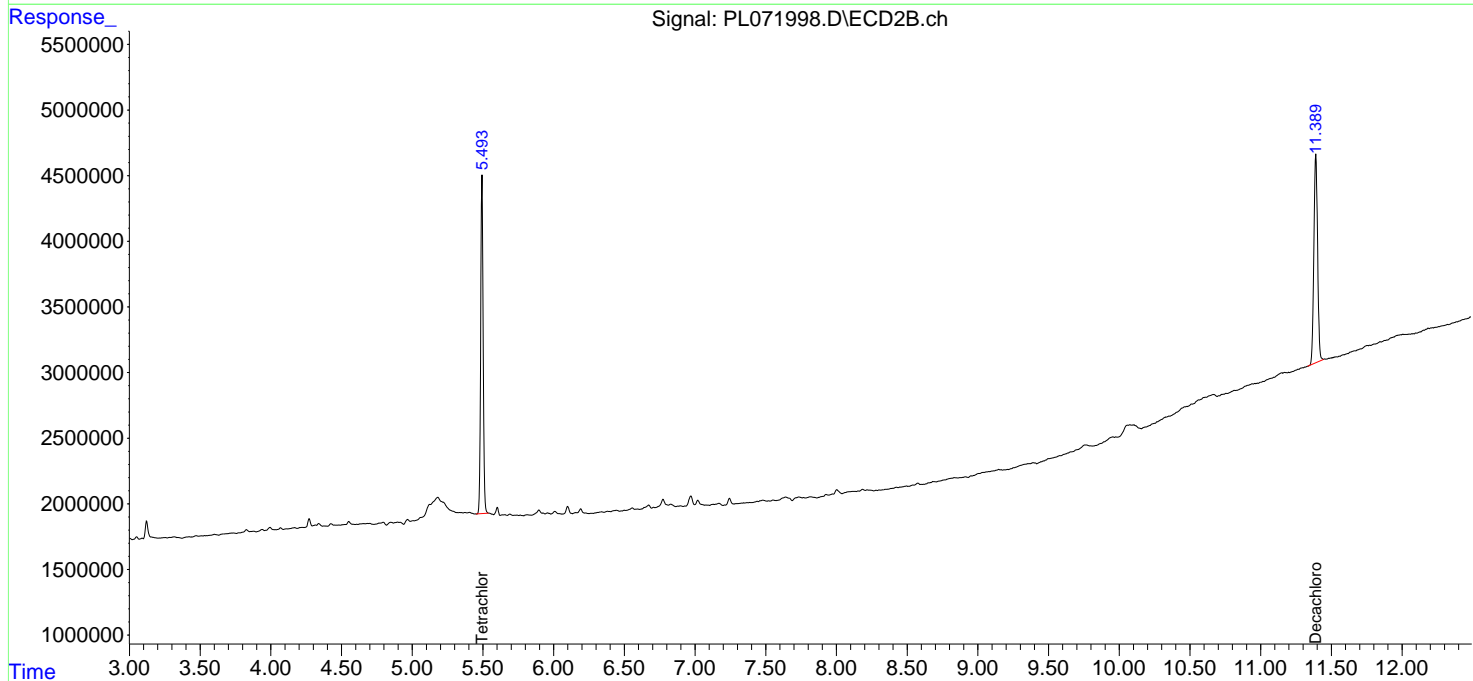
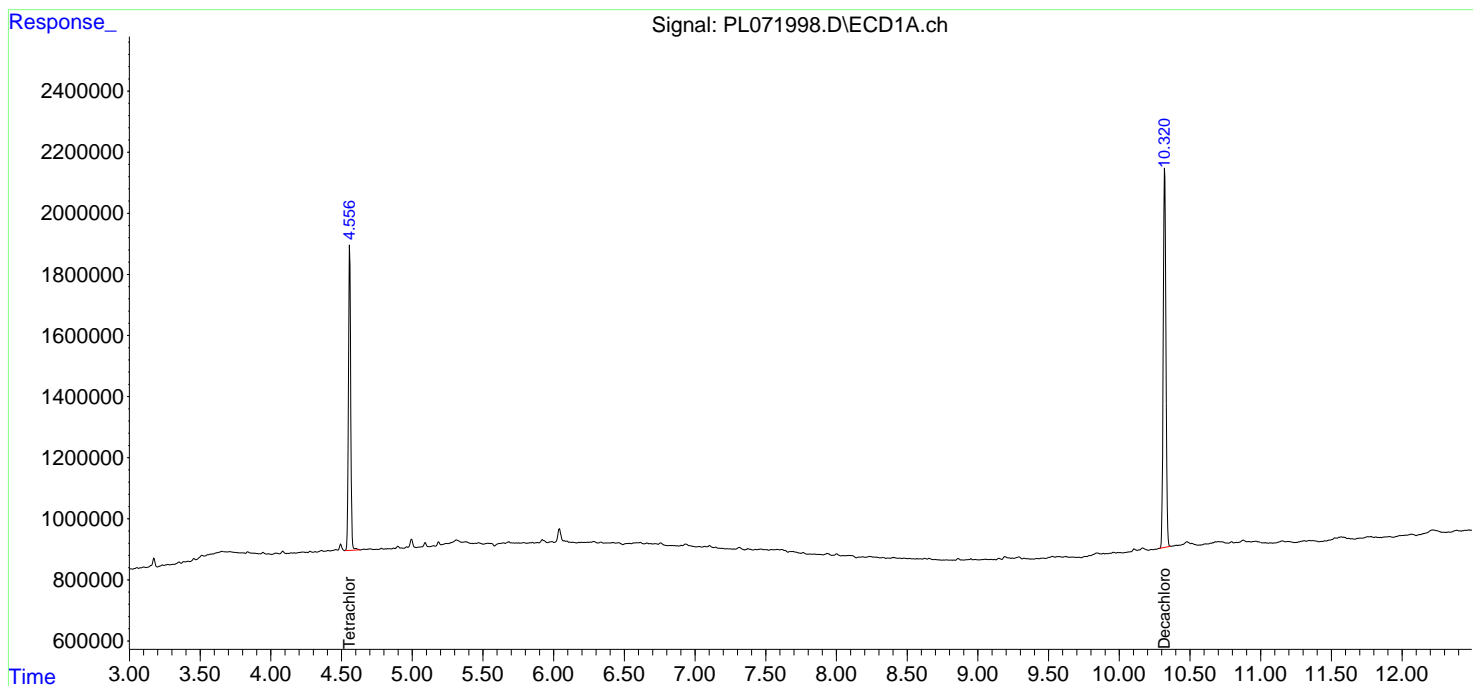
Instrument :
 ECD_L
ClientSampleId :
 TP-5D

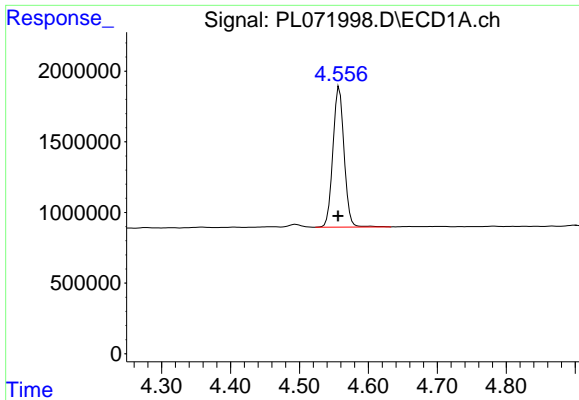
Manual Integrations
APPROVED

Reviewed By :Abdul Mirza 01/17/2022
 Supervised By :Ankita Jodhani 01/17/2022

Integration File signal 1: autoint1.e
 Integration File signal 2: autoint2.e
 Quant Time: Jan 14 21:35:34 2022
 Quant Method : Z:\pestpcbsrv\HPCHEM1\ECD_L\methods\PL010422.M
 Quant Title : GC Extractables
 QLast Update : Thu Jan 06 10:33:37 2022
 Response via : Initial Calibration
 Integrator: ChemStation

Volume Inj. : 1 µl
 Signal #1 Phase : ZB-MR2 Signal #2 Phase: ZB-MR1
 Signal #1 Info : 30M x 0.32mm x0.2 Signal #2 Info : 30M x 0.32mm x0.5µm





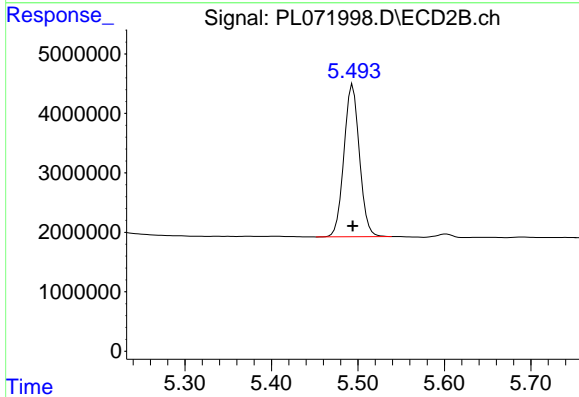
#1 Tetrachloro-m-xylene

R.T.: 4.558 min
 Delta R.T.: 0.002 min
 Response: 11163873
 Conc: 24.17 ng/ml

Instrument :
 ECD_L
 ClientSampleId :
 TP-5D

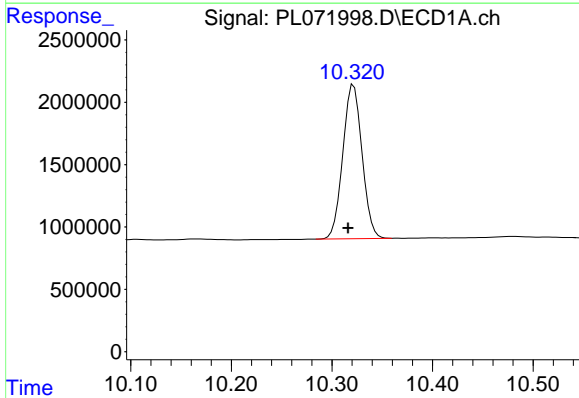
Manual Integrations
 APPROVED

Reviewed By :Abdul Mirza 01/17/2022
 Supervised By :Ankita Jodhani 01/17/2022



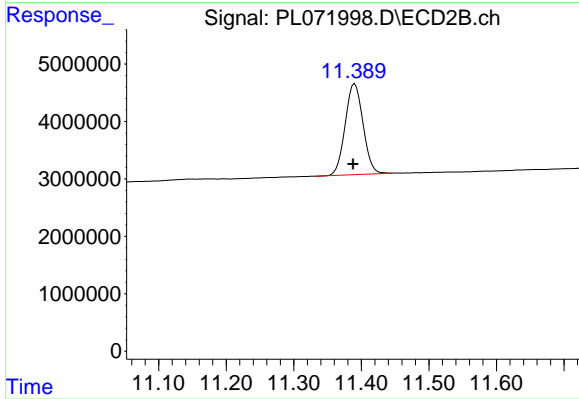
#1 Tetrachloro-m-xylene

R.T.: 5.494 min
 Delta R.T.: 0.000 min
 Response: 31646245
 Conc: 25.76 ng/ml



#28 Decachlorobiphenyl

R.T.: 10.320 min
 Delta R.T.: 0.004 min
 Response: 16385304
 Conc: 22.66 ng/ml m



#28 Decachlorobiphenyl

R.T.: 11.390 min
 Delta R.T.: 0.002 min
 Response: 29022222
 Conc: 24.49 ng/ml