

Data Path : Z:\pestpcbsrv\HPCHEM1\ECD_L\Data\PL011720\
 Data File : PL055817.D
 Signal(s) : Signal #1: ECD1A.ch Signal #2: ECD2B.ch
 Acq On : 17 Jan 2020 14:03
 Operator : AJ\MA
 Sample : PB126156BSD
 Misc :
 ALS Vial : 8 Sample Multiplier: 1

Instrument :
 ECD_L
 ClientSampleId :
 PB126156BSD

Integration File signal 1: autoint1.e
 Integration File signal 2: autoint2.e
 Quant Time: Jan 18 00:32:06 2020
 Quant Method : Z:\pestpcbsrv\HPCHEM1\ECD_L\methods\PL011020.M
 Quant Title : GC Extractables
 QLast Update : Fri Jan 10 00:58:33 2020
 Response via : Initial Calibration
 Integrator: ChemStation

Volume Inj. : 1 µl
 Signal #1 Phase : ZB-MR2 Signal #2 Phase: ZB-MR1
 Signal #1 Info : 30M x 0.32mm x0.2 Signal #2 Info : 30M x 0.32mm x0.5µm

	Compound	RT#1	RT#2	Resp#1	Resp#2	ng/ml	ng/ml

System Monitoring Compounds							
1)	SA Tetrachlo...	3.490	3.968	191.5E6	59128947	20.727	22.320
28)	SA Decachlor...	8.235	8.955	185.9E6	42927378	21.169	20.647
Target Compounds							
2)	A alpha-BHC	3.928	4.351	749.0E6	201.1E6	47.385	50.733
3)	MA gamma-BHC...	4.211	4.631	720.6E6	183.6E6	48.782	49.391
4)	MA Heptachlor	4.512	5.130	740.3E6	169.2E6	51.749	53.335
5)	MB Aldrin	4.760	5.431	713.0E6	162.5E6	50.825	52.117
6)	B beta-BHC	4.460	4.799	311.1E6	76891601	50.903	50.364
7)	B delta-BHC	4.665	5.013	642.5E6	131.4E6	44.950	42.816
8)	Heptachlo...	5.202	5.811	651.8E6	128.5E6	49.103	43.740
9)	A Endosulfan I	5.541	6.164	608.9E6	132.1E6	49.279	49.880
10)	B gamma-Chl...	5.428	6.043	685.6E6	142.7E6	51.208	50.669
11)	B alpha-Chl...	5.487	6.114	655.6E6	139.9E6	49.931	49.791
12)	B 4,4'-DDE	5.649	6.269	625.2E6	136.4E6	50.277	51.335
13)	MA Dieldrin	5.784	6.418	651.2E6	138.6E6	49.680	50.688
14)	MA Endrin	6.040	6.633	581.0E6	110.7E6	50.316	49.078
15)	B Endosulfa...	6.312	6.841	534.7E6	117.0E6	49.564	48.694
16)	A 4,4'-DDD	6.164	6.754	476.1E6	107.2E6	50.238	51.727
17)	MA 4,4'-DDT	6.404	7.049	498.5E6	105.4E6	58.044	53.459
18)	B Endrin al...	6.480	6.963	447.1E6	97844676	47.364	48.186
19)	B Endosulfa...	6.692	7.184	507.6E6	108.9E6	51.890	48.961
20)	A Methoxychlor	6.947	7.502	238.6E6	52694998	55.585	50.337
21)	B Endrin ke...	7.183	7.651	556.4E6	118.3E6	49.084	49.695
22)	Mirex	7.372	8.100	358.8E6	77541996	52.399	47.295
24)	Chlordane-2	0.000	5.431f	0	162.5E6	N.D.	1695.342 #
25)	Chlordane-3	5.428	6.043	685.6E6	142.7E6	582.428	417.694 #
26)	Chlordane-4	5.487	6.114	655.6E6	139.9E6	671.468	348.896 #
27)	Chlordane-5	6.312	0.000	534.7E6	0	1485.276	N.D. #

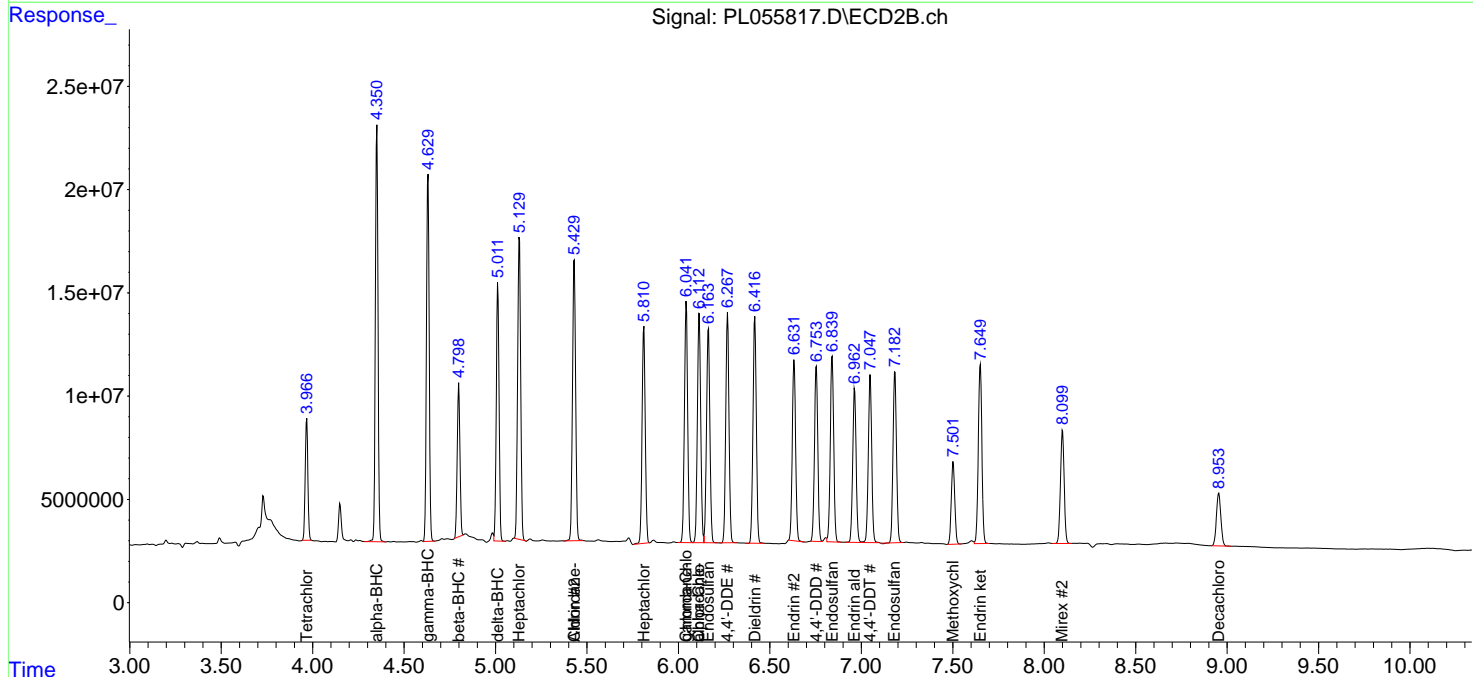
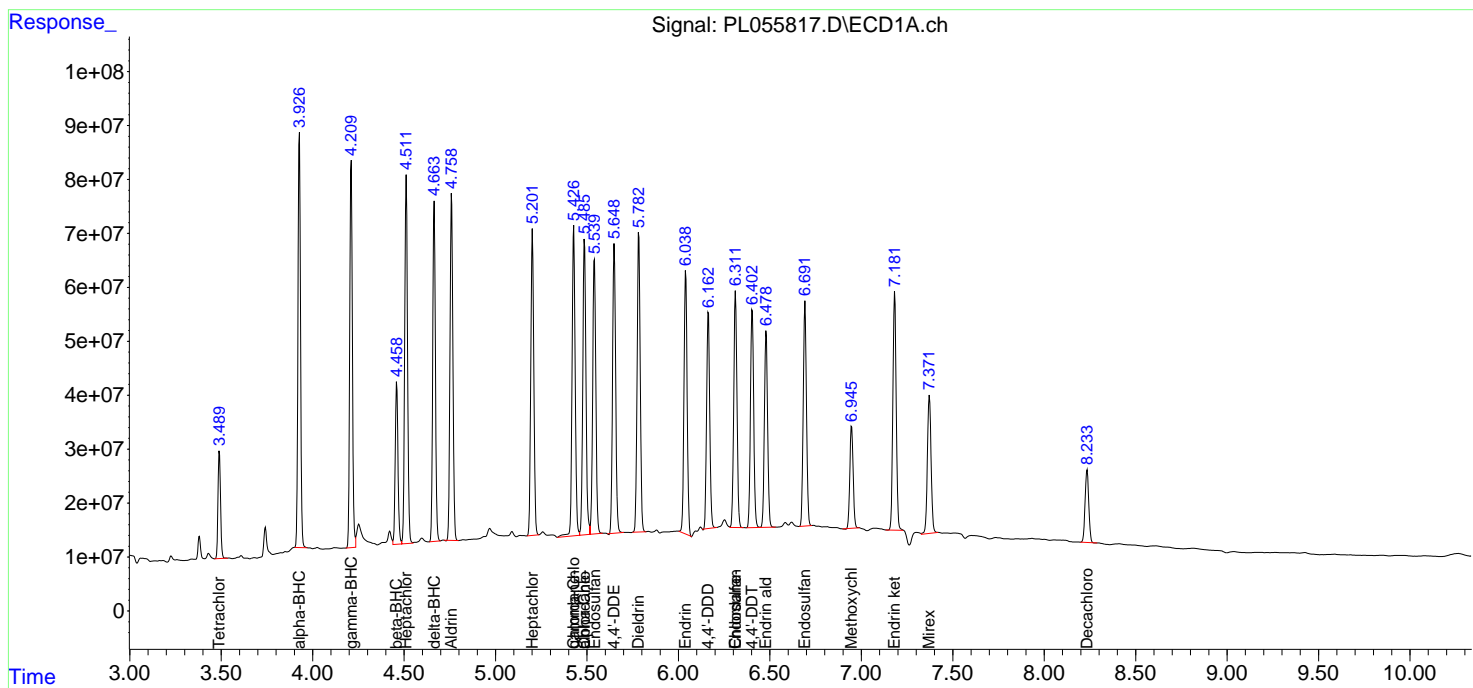
(f)=RT Delta > 1/2 Window (#)=Amounts differ by > 25% (m)=manual int.

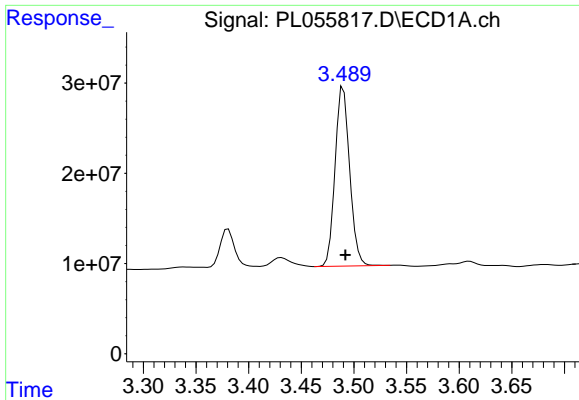
Data Path : Z:\pestpcbsrv\HPCHEM1\ECD_L\Data\PL011720\
 Data File : PL055817.D
 Signal(s) : Signal #1: ECD1A.ch Signal #2: ECD2B.ch
 Acq On : 17 Jan 2020 14:03
 Operator : AJ\MA
 Sample : PB126156BSD
 Misc :
 ALS Vial : 8 Sample Multiplier: 1

Instrument :
 ECD_L
 ClientSampled :
 PB126156BSD

Integration File signal 1: autoint1.e
 Integration File signal 2: autoint2.e
 Quant Time: Jan 18 00:32:06 2020
 Quant Method : Z:\pestpcbsrv\HPCHEM1\ECD_L\methods\PL011020.M
 Quant Title : GC Extractables
 QLast Update : Fri Jan 10 00:58:33 2020
 Response via : Initial Calibration
 Integrator: ChemStation

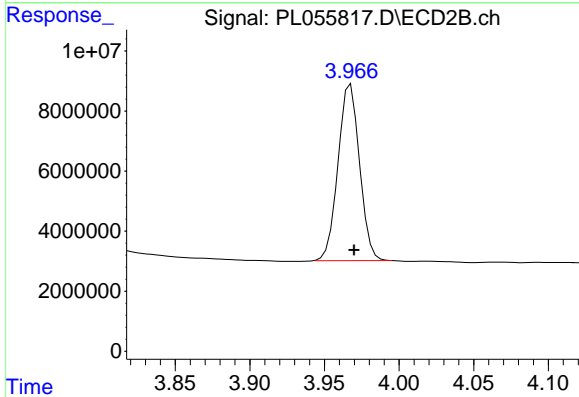
Volume Inj. : 1 µl
 Signal #1 Phase : ZB-MR2 Signal #2 Phase: ZB-MR1
 Signal #1 Info : 30M x 0.32mm x0.2 Signal #2 Info : 30M x 0.32mm x0.5µm



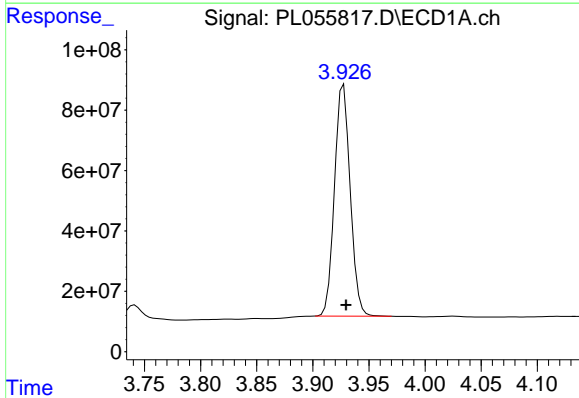


#1 Tetrachloro-m-xylene
 R.T.: 3.490 min
 Delta R.T.: -0.002 min
 Response: 191527195
 Conc: 20.73 ng/ml

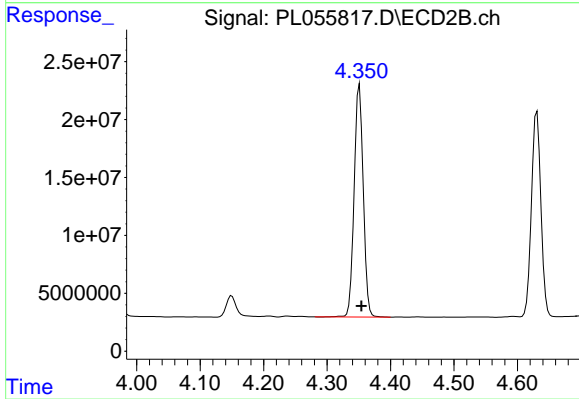
Instrument :
 ECD_L
 ClientSampleId :
 PB126156BSD



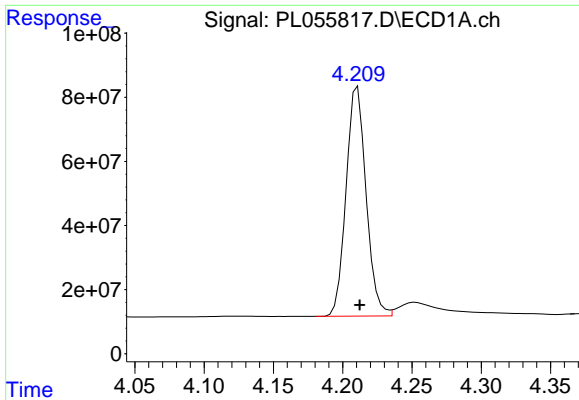
#1 Tetrachloro-m-xylene
 R.T.: 3.968 min
 Delta R.T.: -0.002 min
 Response: 59128947
 Conc: 22.32 ng/ml



#2 alpha-BHC
 R.T.: 3.928 min
 Delta R.T.: -0.002 min
 Response: 748958868
 Conc: 47.38 ng/ml

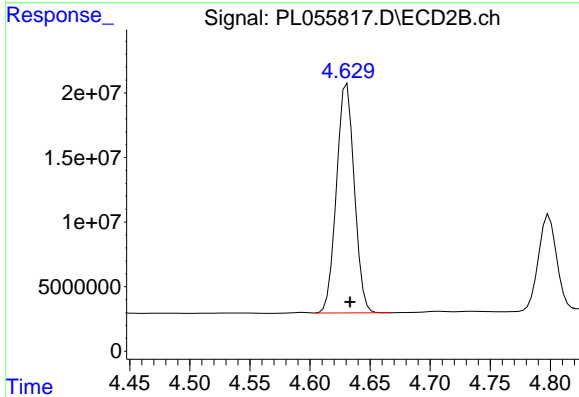


#2 alpha-BHC
 R.T.: 4.351 min
 Delta R.T.: -0.003 min
 Response: 201124692
 Conc: 50.73 ng/ml

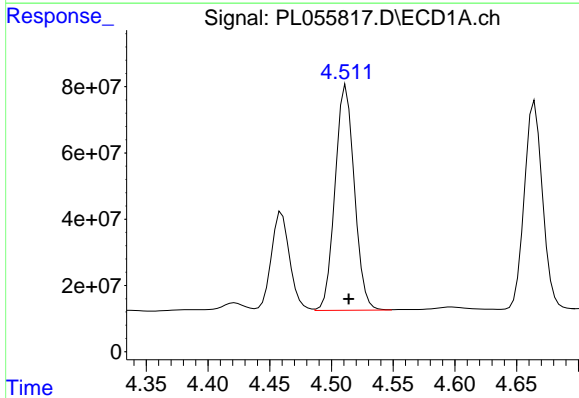


#3 gamma-BHC (Lindane)
R.T.: 4.211 min
Delta R.T.: -0.002 min
Response: 720591885
Conc: 48.78 ng/ml

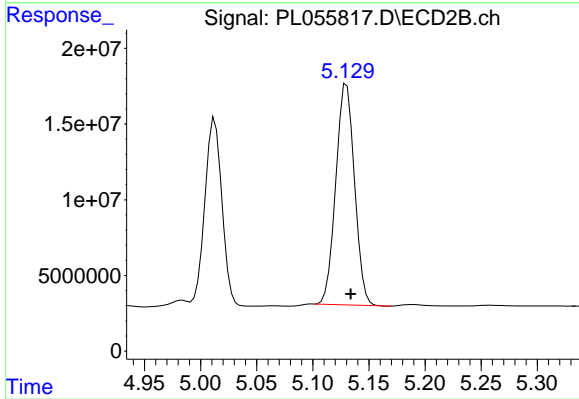
Instrument :
ECD_L
ClientSampleId :
PB126156BSD



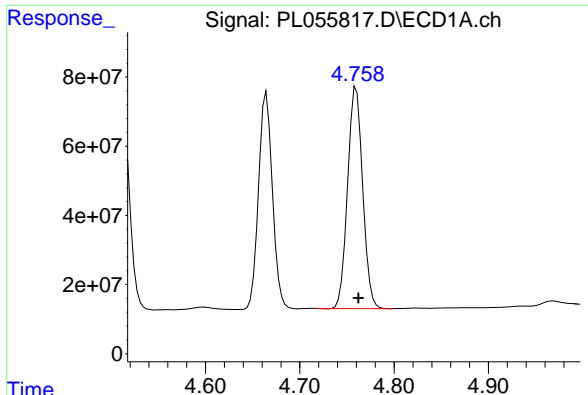
#3 gamma-BHC (Lindane)
R.T.: 4.631 min
Delta R.T.: -0.003 min
Response: 183624352
Conc: 49.39 ng/ml



#4 Heptachlor
R.T.: 4.512 min
Delta R.T.: -0.002 min
Response: 740257819
Conc: 51.75 ng/ml



#4 Heptachlor
R.T.: 5.130 min
Delta R.T.: -0.003 min
Response: 169220564
Conc: 53.34 ng/ml



#5 Aldrin

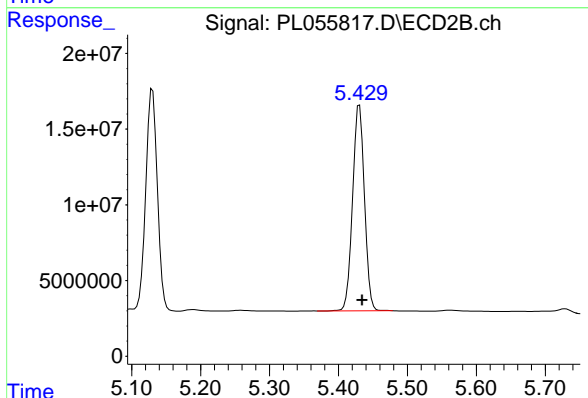
R.T.: 4.760 min

Delta R.T.: -0.002 min

Response: 713007800

Conc: 50.82 ng/ml

Instrument :
ECD_L
ClientSampleId :
PB126156BSD



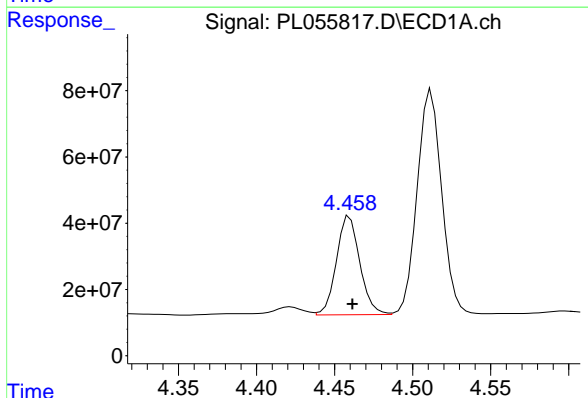
#5 Aldrin

R.T.: 5.431 min

Delta R.T.: -0.004 min

Response: 162549216

Conc: 52.12 ng/ml



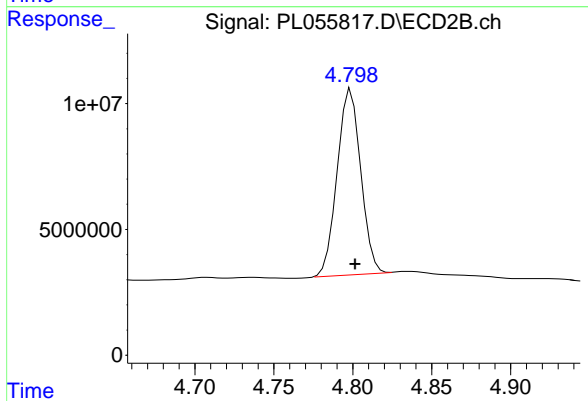
#6 beta-BHC

R.T.: 4.460 min

Delta R.T.: -0.002 min

Response: 311098033

Conc: 50.90 ng/ml



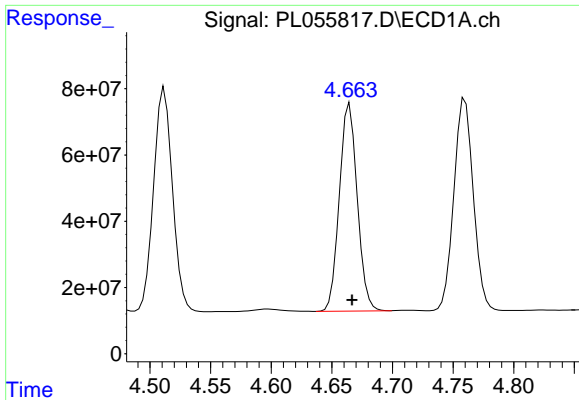
#6 beta-BHC

R.T.: 4.799 min

Delta R.T.: -0.003 min

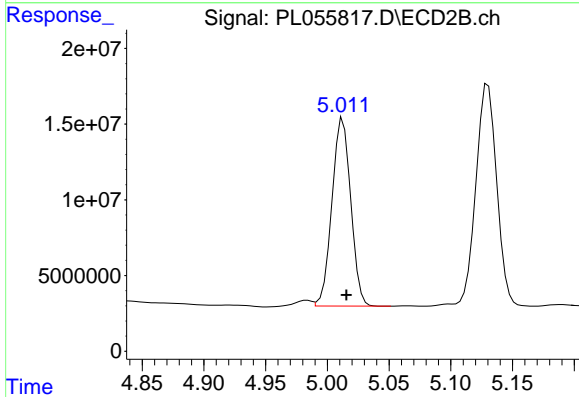
Response: 76891601

Conc: 50.36 ng/ml

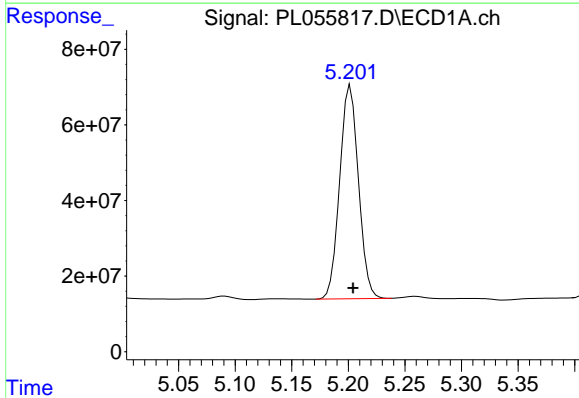


#7 delta-BHC
R.T.: 4.665 min
Delta R.T.: -0.002 min
Response: 642520828
Conc: 44.95 ng/ml

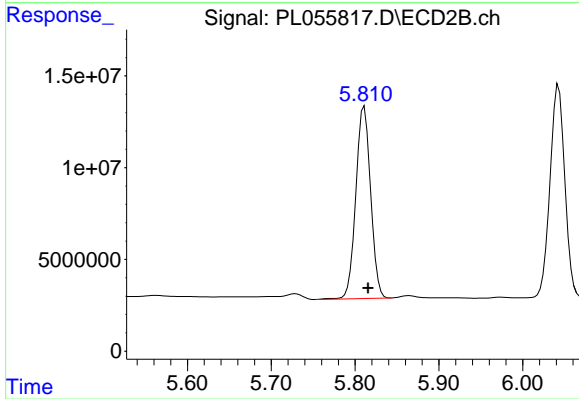
Instrument :
ECD_L
ClientSampleId :
PB126156BSD



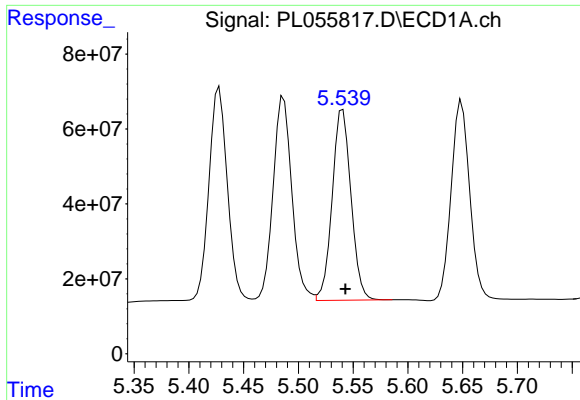
#7 delta-BHC
R.T.: 5.013 min
Delta R.T.: -0.003 min
Response: 131420839
Conc: 42.82 ng/ml



#8 Heptachlor epoxide
R.T.: 5.202 min
Delta R.T.: -0.002 min
Response: 651782007
Conc: 49.10 ng/ml



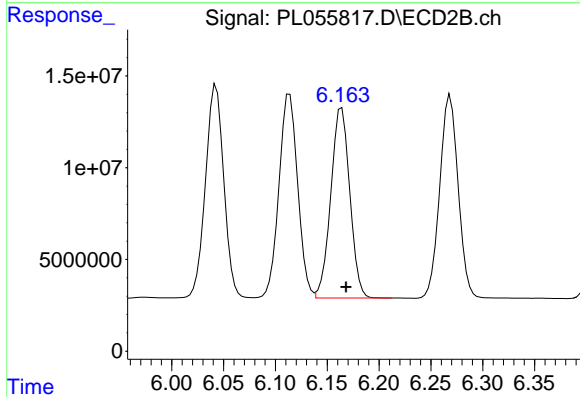
#8 Heptachlor epoxide
R.T.: 5.811 min
Delta R.T.: -0.005 min
Response: 128520306
Conc: 43.74 ng/ml



#9 Endosulfan I

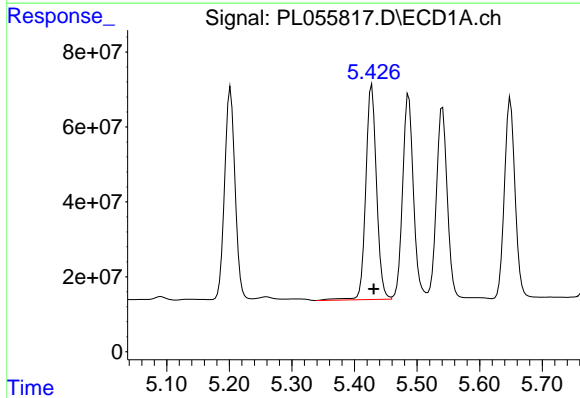
R.T.: 5.541 min
 Delta R.T.: -0.003 min
 Response: 608868788
 Conc: 49.28 ng/ml

Instrument :
 ECD_L
 ClientSampleId :
 PB126156BSD



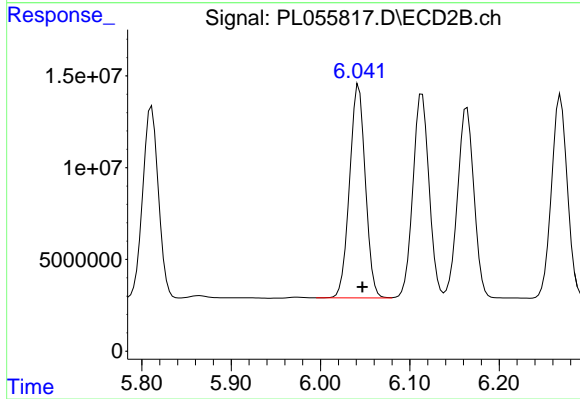
#9 Endosulfan I

R.T.: 6.164 min
 Delta R.T.: -0.004 min
 Response: 132066292
 Conc: 49.88 ng/ml



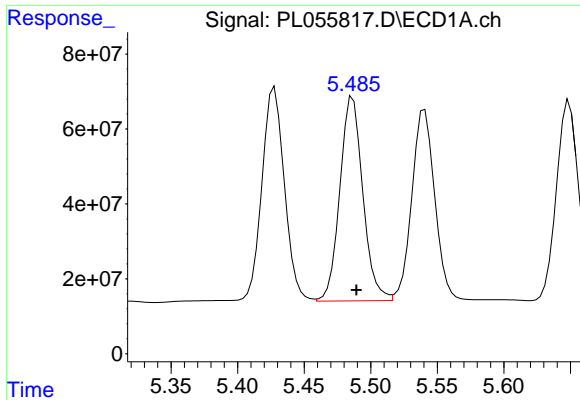
#10 gamma-Chlordane

R.T.: 5.428 min
 Delta R.T.: -0.003 min
 Response: 685567307
 Conc: 51.21 ng/ml



#10 gamma-Chlordane

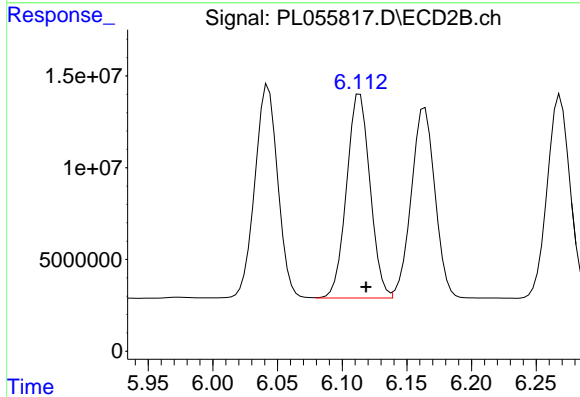
R.T.: 6.043 min
 Delta R.T.: -0.004 min
 Response: 142650763
 Conc: 50.67 ng/ml



#11 alpha-Chlordane

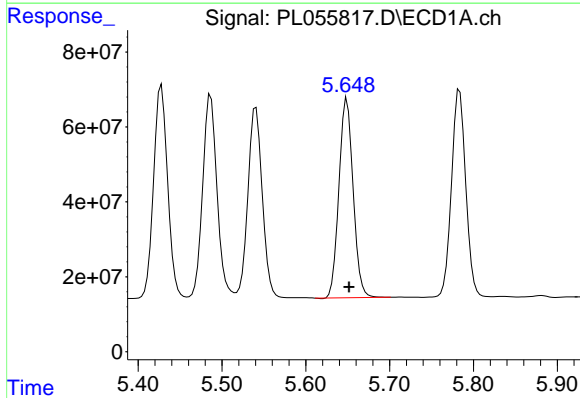
R.T.: 5.487 min
 Delta R.T.: -0.003 min
 Response: 655605727
 Conc: 49.93 ng/ml

Instrument :
 ECD_L
 ClientSampleId :
 PB126156BSD



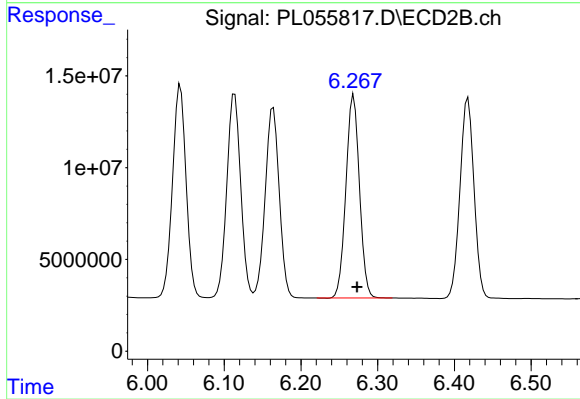
#11 alpha-Chlordane

R.T.: 6.114 min
 Delta R.T.: -0.005 min
 Response: 139948194
 Conc: 49.79 ng/ml



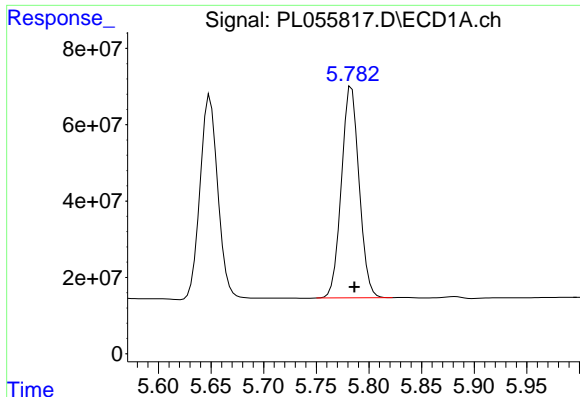
#12 4,4'-DDE

R.T.: 5.649 min
 Delta R.T.: -0.002 min
 Response: 625153433
 Conc: 50.28 ng/ml



#12 4,4'-DDE

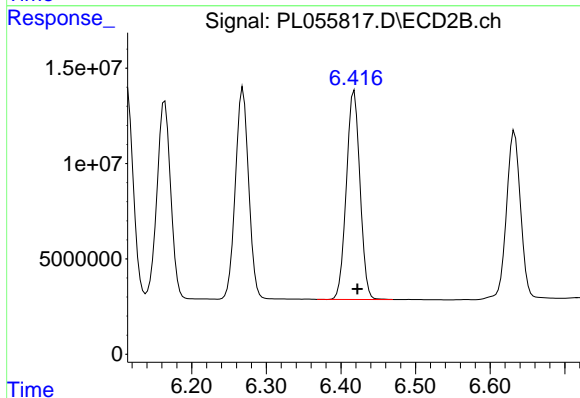
R.T.: 6.269 min
 Delta R.T.: -0.005 min
 Response: 136389263
 Conc: 51.34 ng/ml



#13 Dieldrin

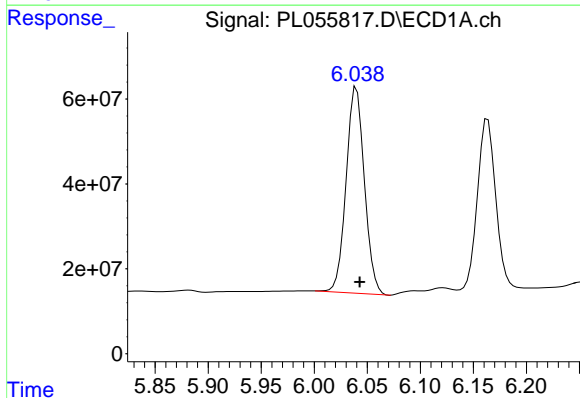
R.T.: 5.784 min
 Delta R.T.: -0.003 min
 Response: 651234059
 Conc: 49.68 ng/ml

Instrument :
 ECD_L
 ClientSampled :
 PB126156BSD



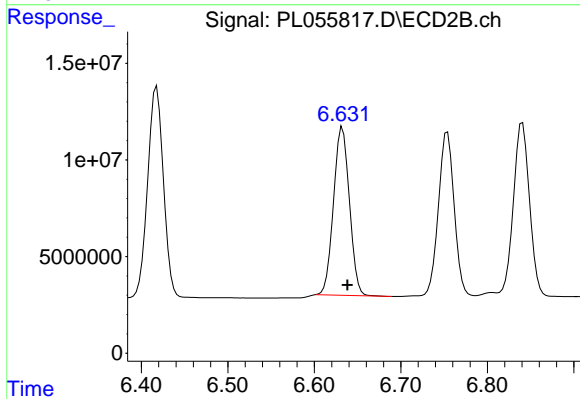
#13 Dieldrin

R.T.: 6.418 min
 Delta R.T.: -0.004 min
 Response: 138599542
 Conc: 50.69 ng/ml



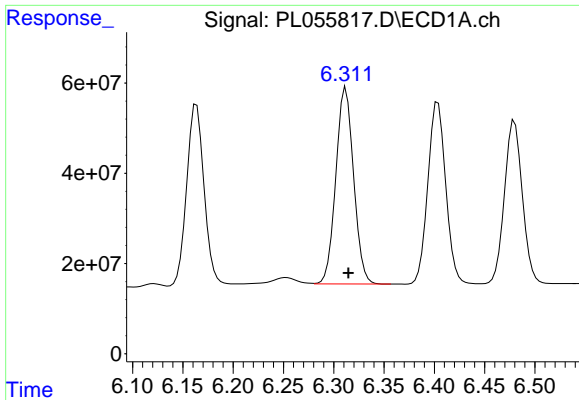
#14 Endrin

R.T.: 6.040 min
 Delta R.T.: -0.003 min
 Response: 581039303
 Conc: 50.32 ng/ml



#14 Endrin

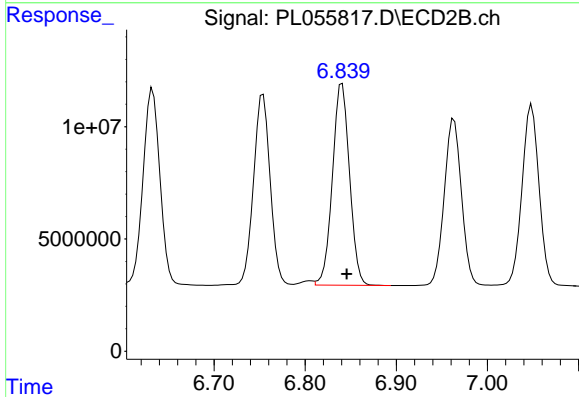
R.T.: 6.633 min
 Delta R.T.: -0.006 min
 Response: 110672068
 Conc: 49.08 ng/ml



#15 Endosulfan II

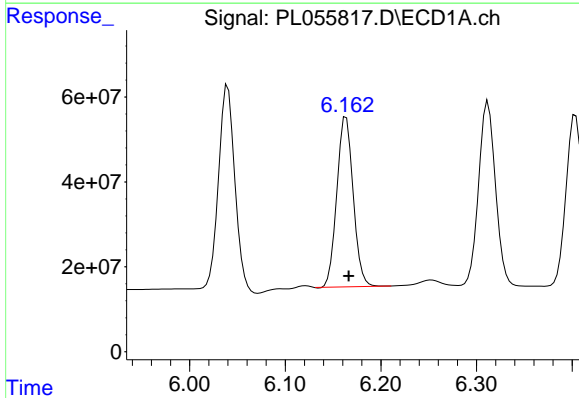
R.T.: 6.312 min
Delta R.T.: -0.002 min
Response: 534666372
Conc: 49.56 ng/ml

Instrument :
ECD_L
ClientSampled :
PB126156BSD



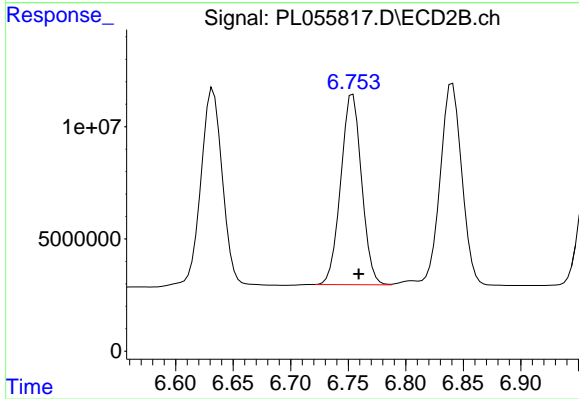
#15 Endosulfan II

R.T.: 6.841 min
Delta R.T.: -0.005 min
Response: 116983853
Conc: 48.69 ng/ml



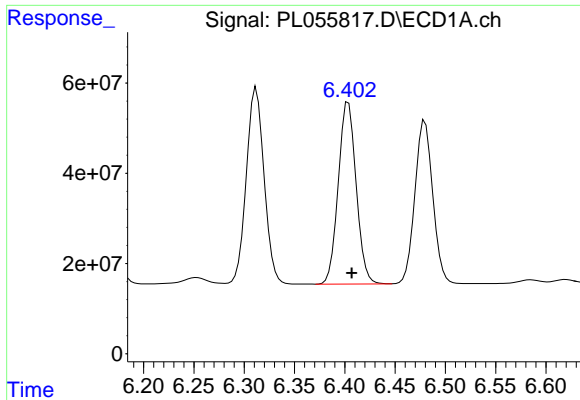
#16 4,4'-DDD

R.T.: 6.164 min
Delta R.T.: -0.003 min
Response: 476112445
Conc: 50.24 ng/ml



#16 4,4'-DDD

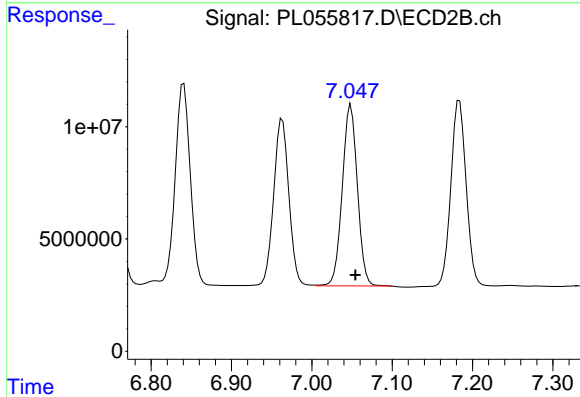
R.T.: 6.754 min
Delta R.T.: -0.005 min
Response: 107186200
Conc: 51.73 ng/ml



#17 4,4'-DDT

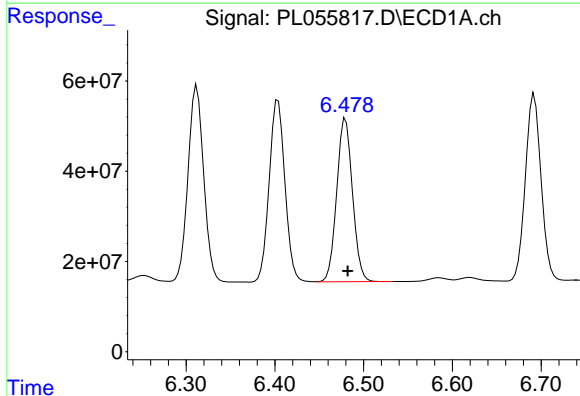
R.T.: 6.404 min
 Delta R.T.: -0.003 min
 Response: 498486292
 Conc: 58.04 ng/ml

Instrument :
 ECD_L
 ClientSampleId :
 PB126156BSD



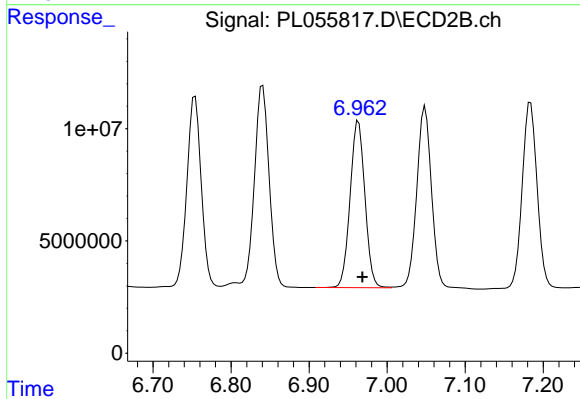
#17 4,4'-DDT

R.T.: 7.049 min
 Delta R.T.: -0.006 min
 Response: 105406989
 Conc: 53.46 ng/ml



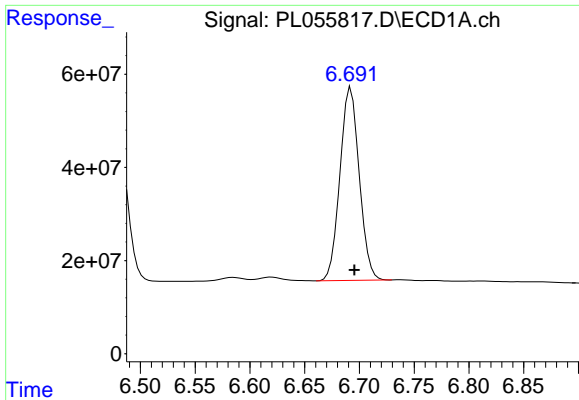
#18 Endrin aldehyde

R.T.: 6.480 min
 Delta R.T.: -0.002 min
 Response: 447072821
 Conc: 47.36 ng/ml



#18 Endrin aldehyde

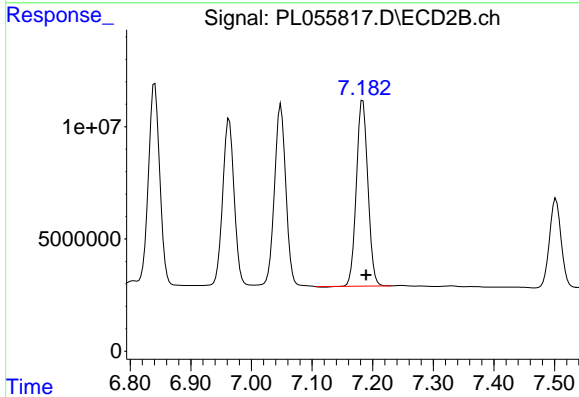
R.T.: 6.963 min
 Delta R.T.: -0.005 min
 Response: 97844676
 Conc: 48.19 ng/ml



#19 Endosulfan Sulfate

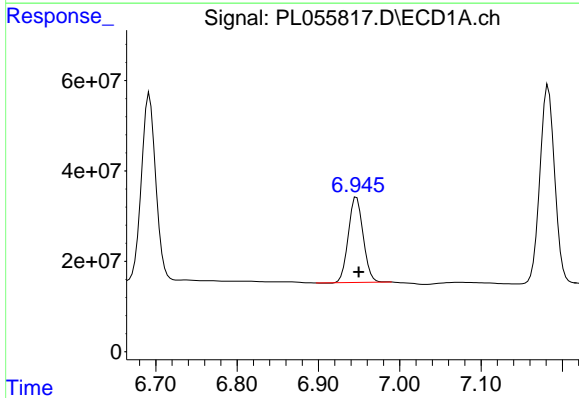
R.T.: 6.692 min
 Delta R.T.: -0.003 min
 Response: 507595541
 Conc: 51.89 ng/ml

Instrument :
 ECD_L
 ClientSampleId :
 PB126156BSD



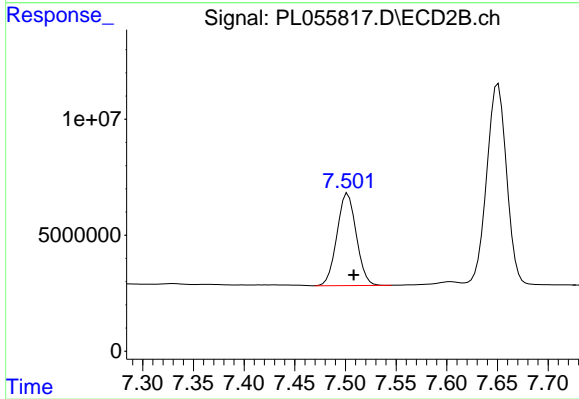
#19 Endosulfan Sulfate

R.T.: 7.184 min
 Delta R.T.: -0.005 min
 Response: 108929552
 Conc: 48.96 ng/ml



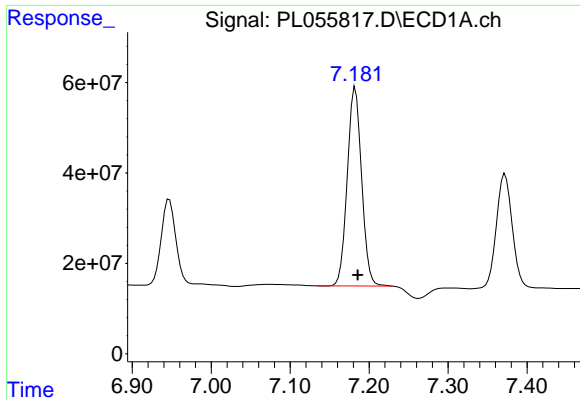
#20 Methoxychlor

R.T.: 6.947 min
 Delta R.T.: -0.003 min
 Response: 238621025
 Conc: 55.59 ng/ml



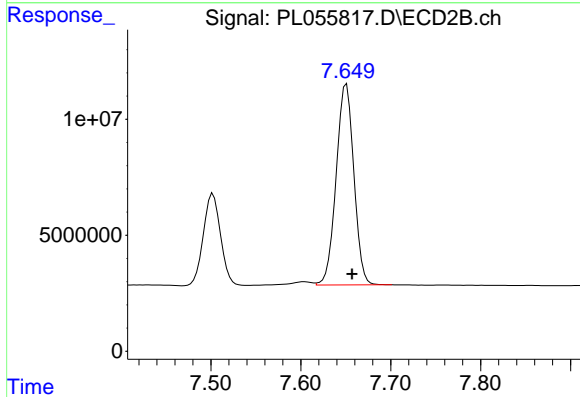
#20 Methoxychlor

R.T.: 7.502 min
 Delta R.T.: -0.006 min
 Response: 52694998
 Conc: 50.34 ng/ml

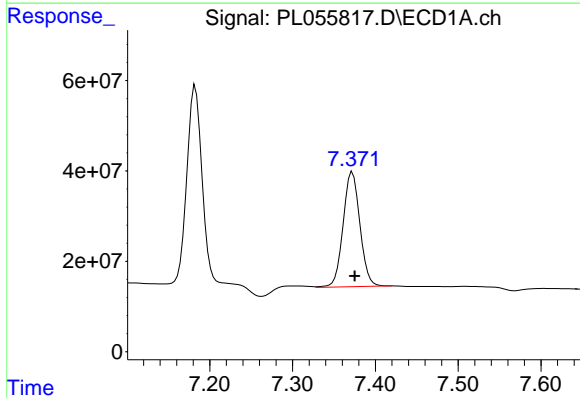


#21 Endrin ketone
 R.T.: 7.183 min
 Delta R.T.: -0.003 min
 Response: 556391737
 Conc: 49.08 ng/ml

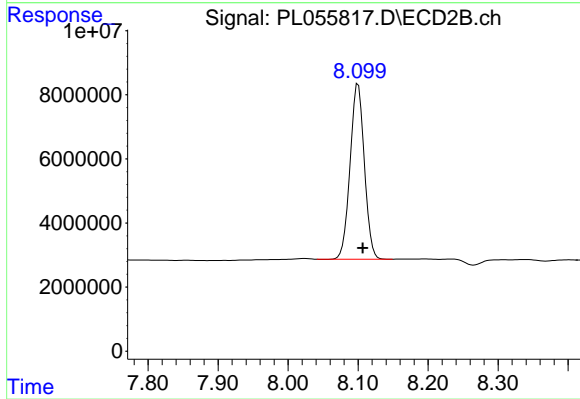
Instrument :
 ECD_L
 ClientSampleId :
 PB126156BSD



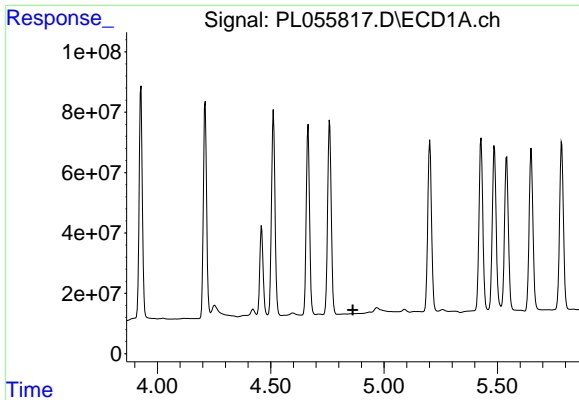
#21 Endrin ketone
 R.T.: 7.651 min
 Delta R.T.: -0.006 min
 Response: 118325606
 Conc: 49.69 ng/ml



#22 Mirex
 R.T.: 7.372 min
 Delta R.T.: -0.003 min
 Response: 358783245
 Conc: 52.40 ng/ml



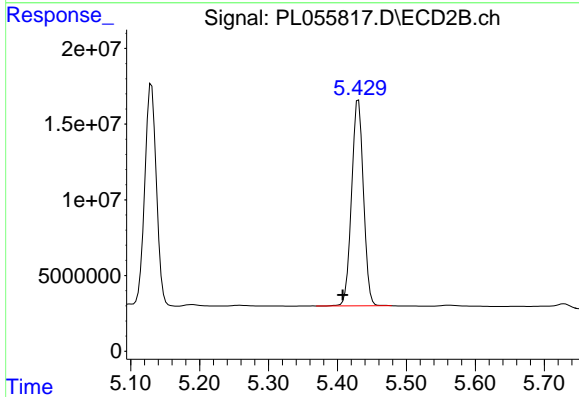
#22 Mirex
 R.T.: 8.100 min
 Delta R.T.: -0.007 min
 Response: 77541996
 Conc: 47.29 ng/ml



#24 Chlordane-2

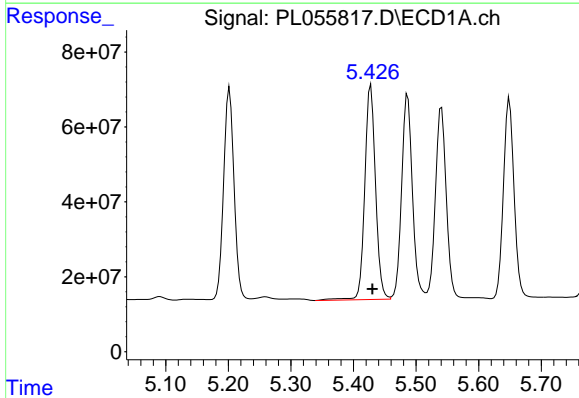
R.T.: 0.000 min
 Exp R.T.: 4.862 min
 Response: 0
 Conc: N.D.

Instrument :
 ECD_L
 ClientSampleId :
 PB126156BSD



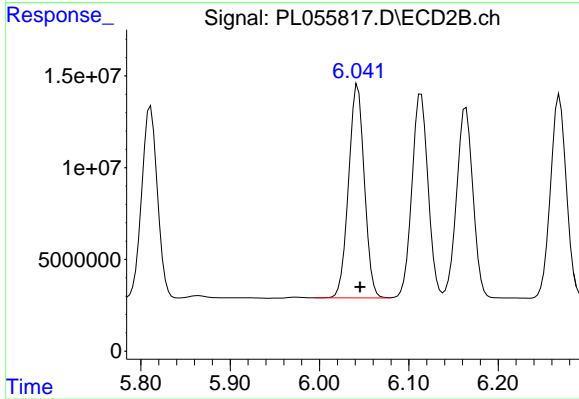
#24 Chlordane-2

R.T.: 5.431 min
 Delta R.T.: 0.023 min
 Response: 162549216
 Conc: 1695.34 ng/ml



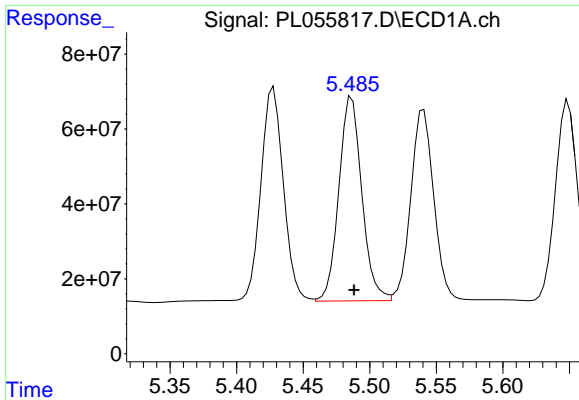
#25 Chlordane-3

R.T.: 5.428 min
 Delta R.T.: -0.003 min
 Response: 685567307
 Conc: 582.43 ng/ml



#25 Chlordane-3

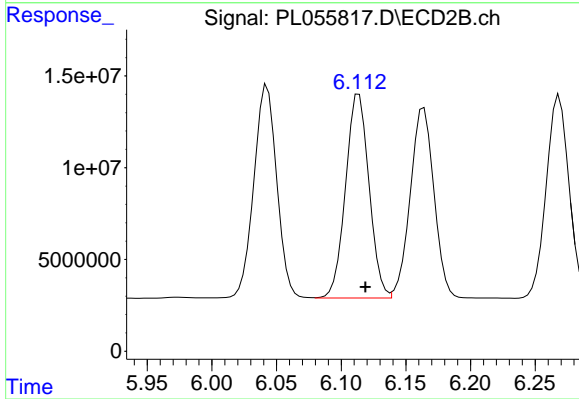
R.T.: 6.043 min
 Delta R.T.: -0.003 min
 Response: 142650763
 Conc: 417.69 ng/ml



#26 Chlordane-4

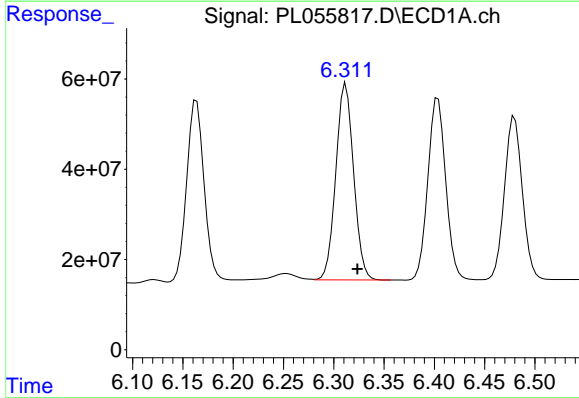
R.T.: 5.487 min
 Delta R.T.: -0.002 min
 Response: 655605727
 Conc: 671.47 ng/ml

Instrument :
 ECD_L
 ClientSampleId :
 PB126156BSD



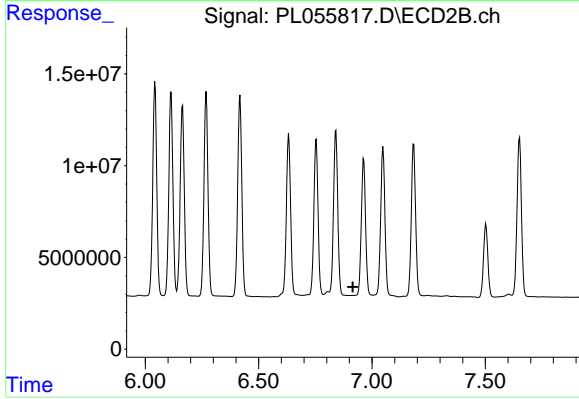
#26 Chlordane-4

R.T.: 6.114 min
 Delta R.T.: -0.005 min
 Response: 139948194
 Conc: 348.90 ng/ml



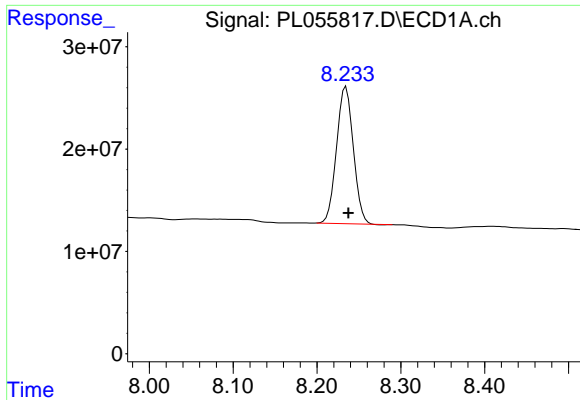
#27 Chlordane-5

R.T.: 6.312 min
 Delta R.T.: -0.011 min
 Response: 534666372
 Conc: 1485.28 ng/ml



#27 Chlordane-5

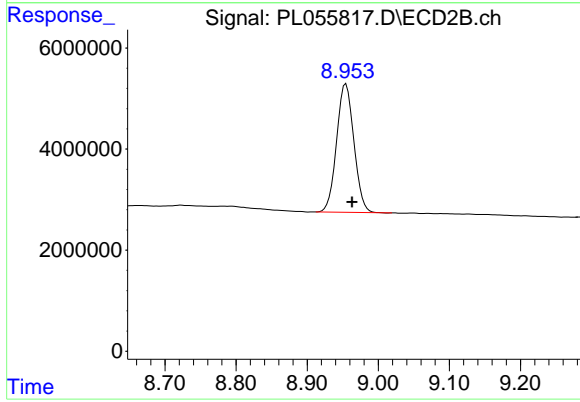
R.T.: 0.000 min
 Exp R.T.: 6.915 min
 Response: 0
 Conc: N.D.



#28 Decachlorobiphenyl

R.T.: 8.235 min
Delta R.T.: -0.003 min
Response: 185899238
Conc: 21.17 ng/ml

Instrument :
ECD_L
ClientSampleId :
PB126156BSD



#28 Decachlorobiphenyl

R.T.: 8.955 min
Delta R.T.: -0.009 min
Response: 42927378
Conc: 20.65 ng/ml