

Data Path : Z:\pestpcbsrv\HPCHEM1\ECD\_L\Data\PL011819\  
 Data File : PL044056.D  
 Signal(s) : Signal #1: ECD1A.ch Signal #2: ECD2B.ch  
 Acq On : 18 Jan 2019 12:24  
 Operator : AJ\SJ  
 Sample : RESCHK  
 Misc :  
 ALS Vial : 4 Sample Multiplier: 1

Instrument :  
 ECD\_L  
 ClientSampleId :  
 RESCHK

Integration File signal 1: autoint1.e  
 Integration File signal 2: autoint2.e  
 Quant Time: Jan 19 03:13:10 2019  
 Quant Method : Z:\pestpcbsrv\HPCHEM1\ECD\_L\methods\PL011819.M  
 Quant Title : GC Extractables  
 QLast Update : Sat Jan 19 02:56:00 2019  
 Response via : Initial Calibration  
 Integrator: ChemStation

Volume Inj. : 2 µl  
 Signal #1 Phase : ZB-MR1 Signal #2 Phase: ZB-MR2  
 Signal #1 Info : 30M x 0.32mm x0.5 Signal #2 Info : 30M x 0.32mm x0.25µm

	Compound	RT#1	RT#2	Resp#1	Resp#2	ng/ml	ng/ml
-----							
System Monitoring Compounds							
1)	SA Tetrachlo...	3.385	4.008	144.0E6	66322631	26.462	28.142
28)	SA Decachlor...	8.088	9.079	167.5E6	66709457	28.338	29.463
Target Compounds							
9)	A Endosulfan I	5.403	6.243	75062146	35632615	12.257	13.664
10)	B gamma-Chl...	5.294	6.120	83514290	38436385	12.436	13.602
11)	B alpha-Chl...	5.403f	6.243f	75062146	35632615	11.418	12.676
12)	B 4,4'-DDE	5.518	6.349	155.4E6	65606643	26.476	27.393
13)	MA Dieldrin	5.644	6.500	175.4E6	75360032	27.129	28.073
15)	B Endosulfa...	6.111f	0.000	20681876	0	3.633	N.D. #
16)	A 4,4'-DDD	0.000	6.800f	0	9717781	N.D.	4.807 #
19)	B Endosulfa...	6.553	7.273	142.8E6	62576720	24.969	26.139
20)	A Methoxychlor	6.814	7.595	397.3E6	165.9E6	152.186	141.279
21)	B Endrin ke...	7.039	7.743	144.1E6	58067323	23.057	24.457
25)	Chlordane-3	5.294	6.120	83514290	38436385	101.979	96.986
26)	Chlordane-4	5.403	6.243	75062146	35632615	102.683	74.616 #
27)	Chlordane-5	6.111	0.000	20681876	0	92.089	N.D. #
-----							

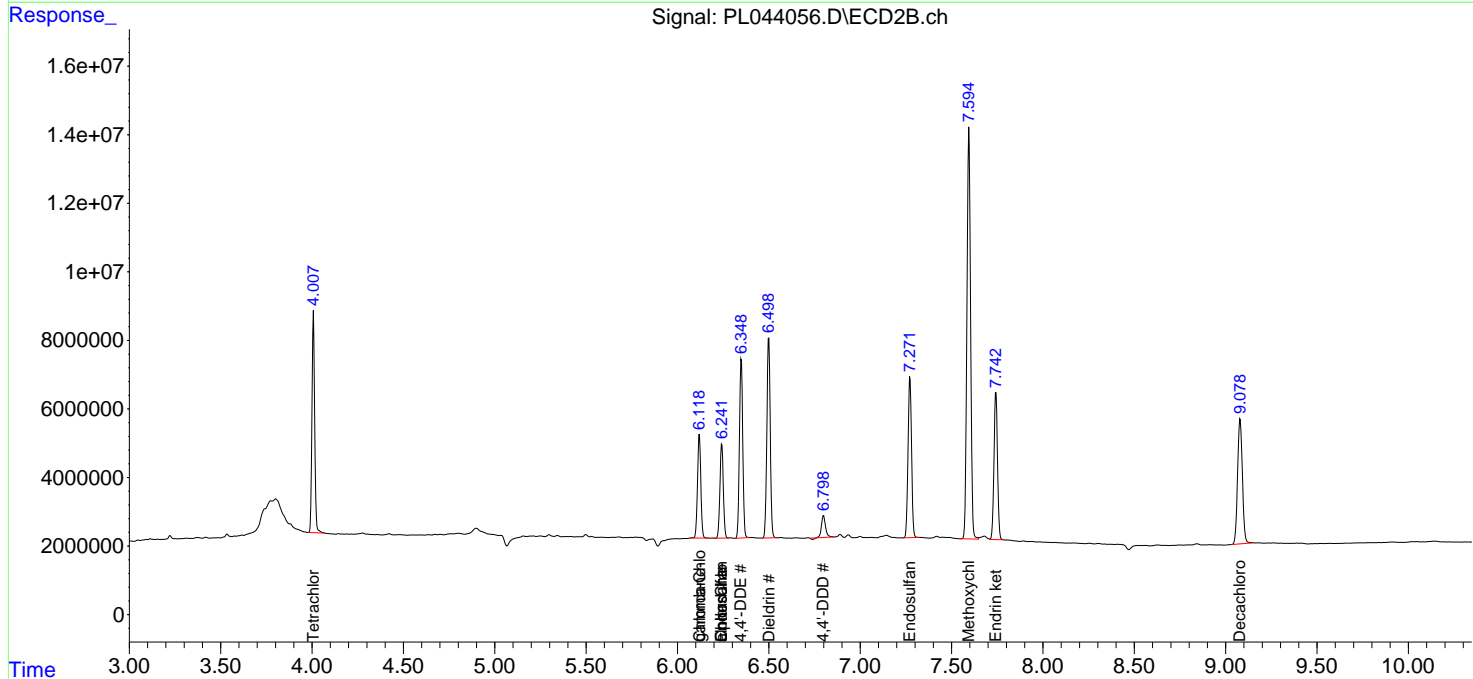
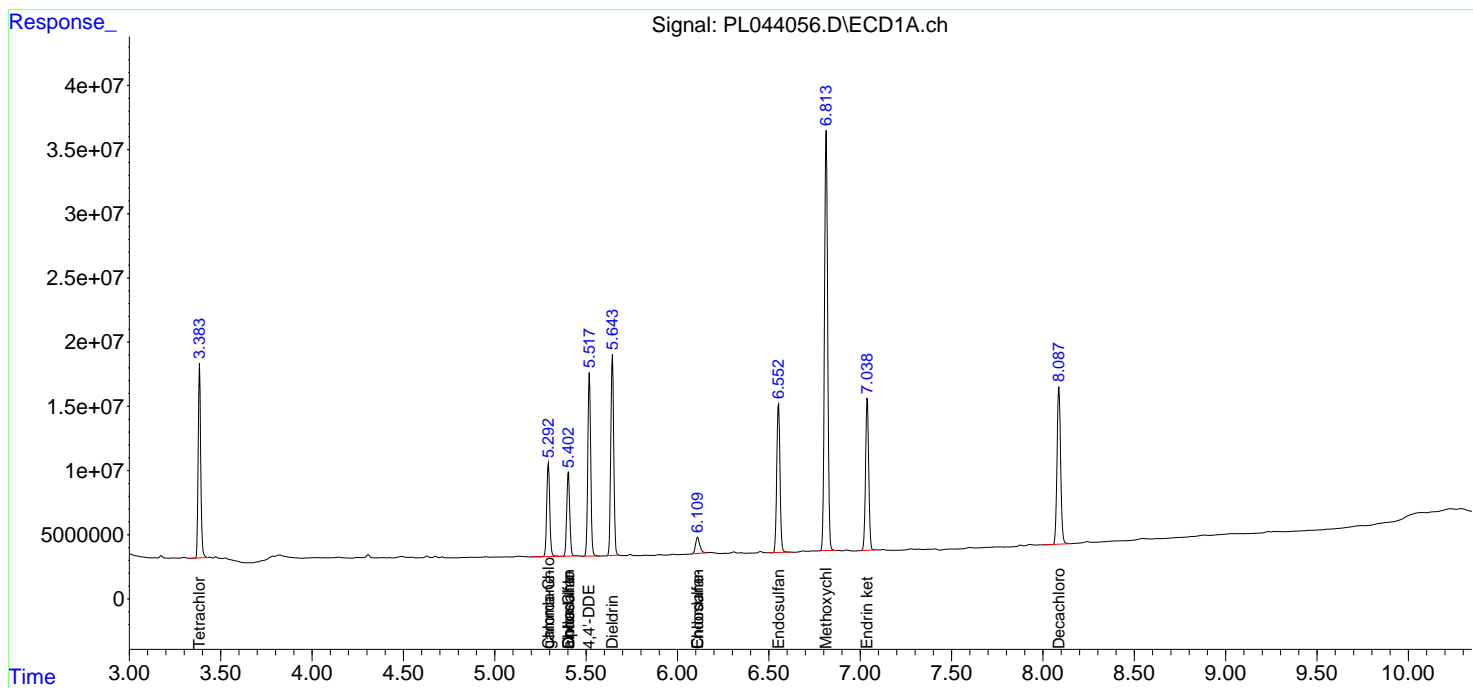
(f)=RT Delta > 1/2 Window (#)=Amounts differ by > 25% (m)=manual int.

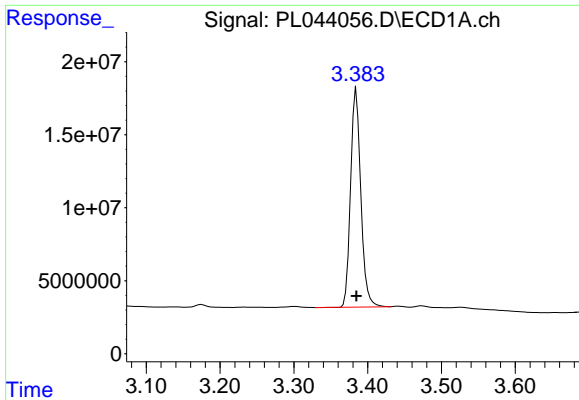
Data Path : Z:\pestpcbsrv\HPCHEM1\ECD\_L\Data\PL011819\  
 Data File : PL044056.D  
 Signal(s) : Signal #1: ECD1A.ch Signal #2: ECD2B.ch  
 Acq On : 18 Jan 2019 12:24  
 Operator : AJ\SJ  
 Sample : RESCHK  
 Misc :  
 ALS Vial : 4 Sample Multiplier: 1

Instrument :  
 ECD\_L  
 ClientSampled :  
 RESCHK

Integration File signal 1: autoint1.e  
 Integration File signal 2: autoint2.e  
 Quant Time: Jan 19 03:13:10 2019  
 Quant Method : Z:\pestpcbsrv\HPCHEM1\ECD\_L\methods\PL011819.M  
 Quant Title : GC Extractables  
 QLast Update : Sat Jan 19 02:56:00 2019  
 Response via : Initial Calibration  
 Integrator: ChemStation

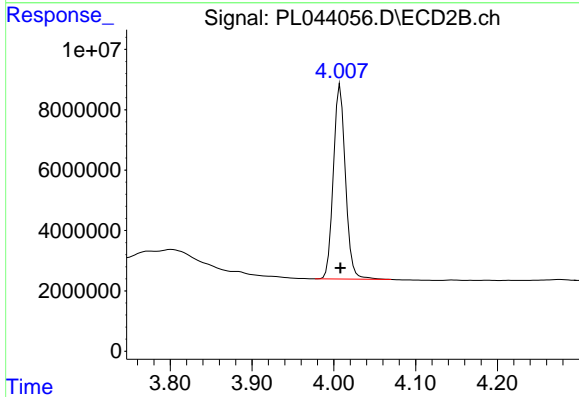
Volume Inj. : 2 µl  
 Signal #1 Phase : ZB-MR1 Signal #2 Phase: ZB-MR2  
 Signal #1 Info : 30M x 0.32mm x0.5 Signal #2 Info : 30M x 0.32mm x0.25µm



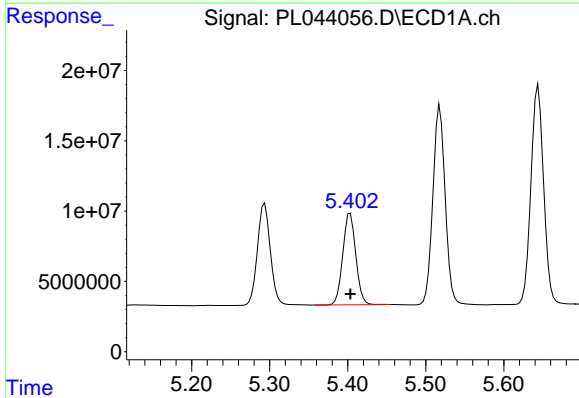


#1 Tetrachloro-m-xylene  
 R.T.: 3.385 min  
 Delta R.T.: 0.000 min  
 Response: 143982046  
 Conc: 26.46 ng/ml

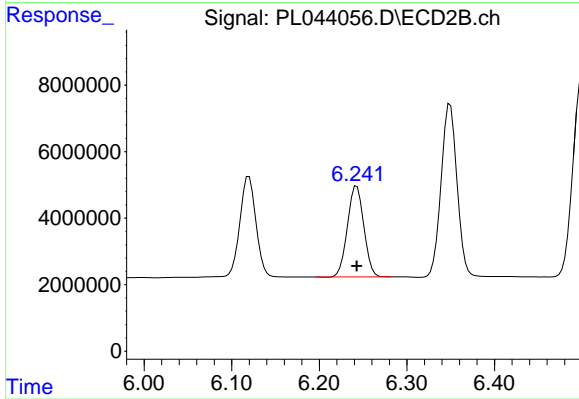
Instrument :  
 ECD\_L  
 ClientSampleId :  
 RESCHK



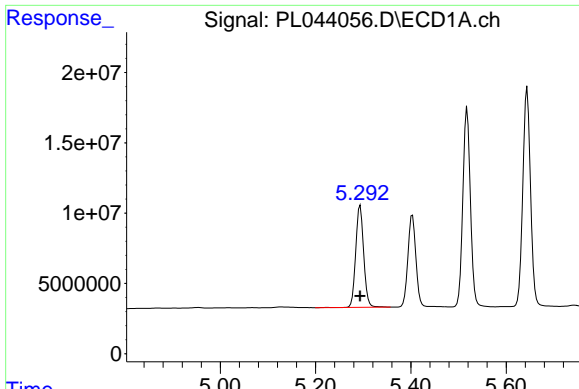
#1 Tetrachloro-m-xylene  
 R.T.: 4.008 min  
 Delta R.T.: 0.000 min  
 Response: 66322631  
 Conc: 28.14 ng/ml



#9 Endosulfan I  
 R.T.: 5.403 min  
 Delta R.T.: 0.000 min  
 Response: 75062146  
 Conc: 12.26 ng/ml



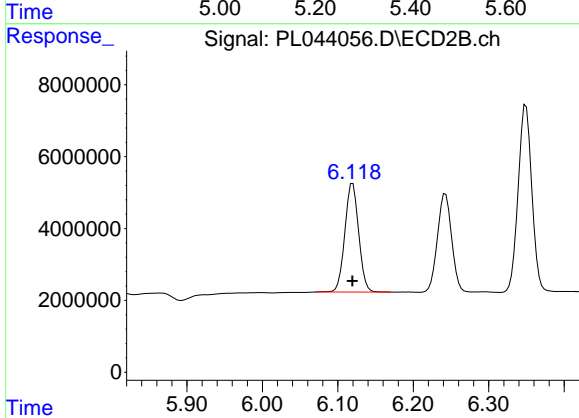
#9 Endosulfan I  
 R.T.: 6.243 min  
 Delta R.T.: 0.000 min  
 Response: 35632615  
 Conc: 13.66 ng/ml



#10 gamma-Chlordane

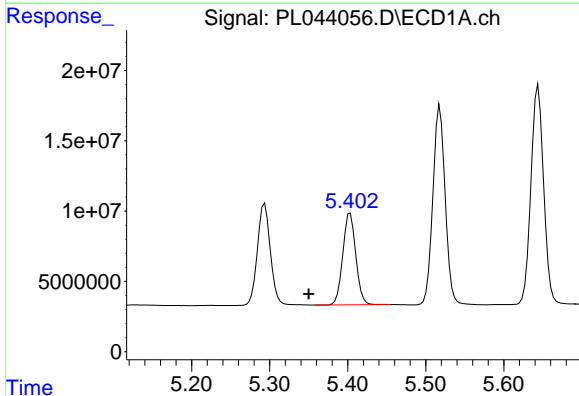
R.T.: 5.294 min  
 Delta R.T.: 0.000 min  
 Response: 83514290  
 Conc: 12.44 ng/ml

Instrument :  
 ECD\_L  
 ClientSampled :  
 RESCHK



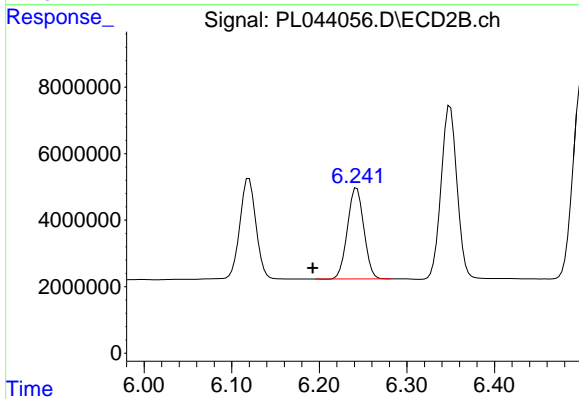
#10 gamma-Chlordane

R.T.: 6.120 min  
 Delta R.T.: 0.000 min  
 Response: 38436385  
 Conc: 13.60 ng/ml



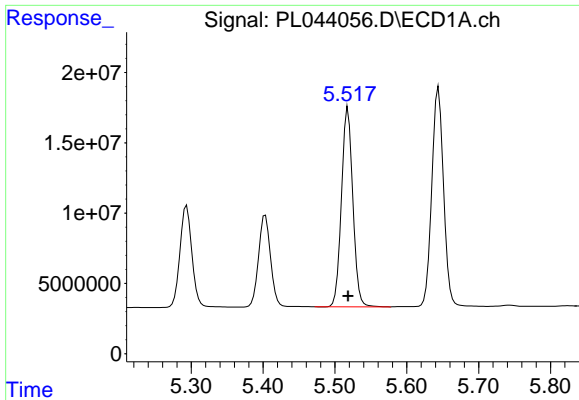
#11 alpha-Chlordane

R.T.: 5.403 min  
 Delta R.T.: 0.053 min  
 Response: 75062146  
 Conc: 11.42 ng/ml



#11 alpha-Chlordane

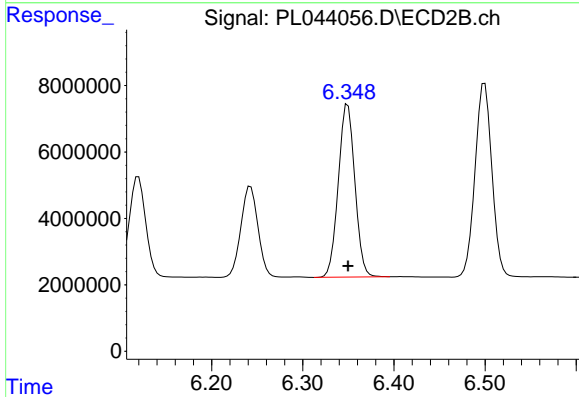
R.T.: 6.243 min  
 Delta R.T.: 0.050 min  
 Response: 35632615  
 Conc: 12.68 ng/ml



#12 4,4'-DDE

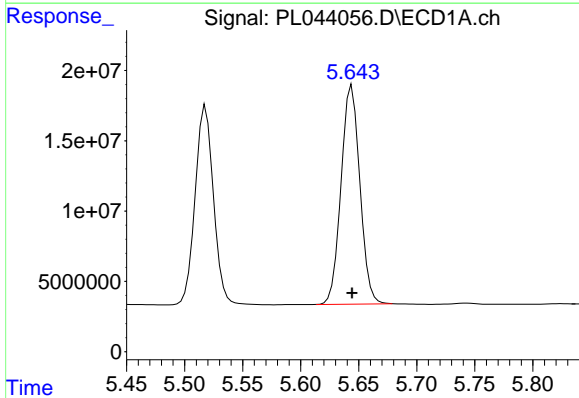
R.T.: 5.518 min  
 Delta R.T.: 0.000 min  
 Response: 155397666  
 Conc: 26.48 ng/ml

Instrument :  
 ECD\_L  
 ClientSampleId :  
 RESCHK



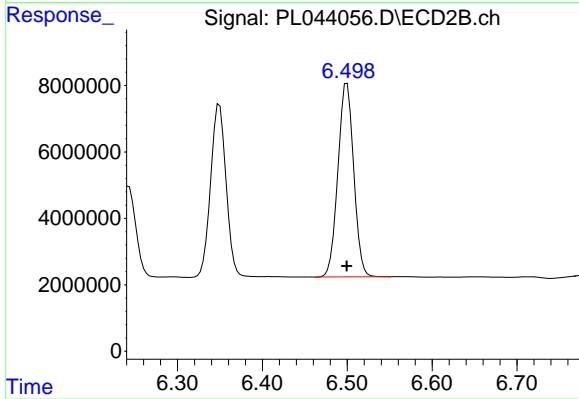
#12 4,4'-DDE

R.T.: 6.349 min  
 Delta R.T.: 0.000 min  
 Response: 65606643  
 Conc: 27.39 ng/ml



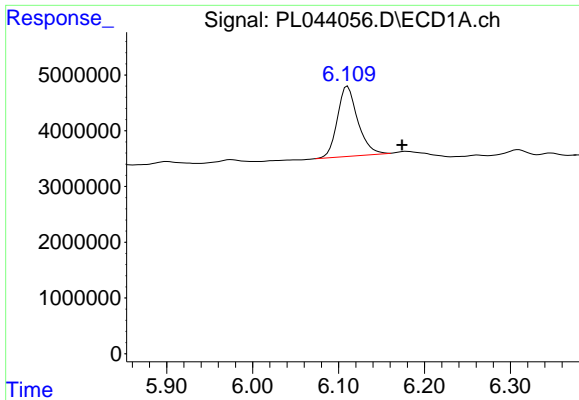
#13 Dieldrin

R.T.: 5.644 min  
 Delta R.T.: 0.000 min  
 Response: 175444139  
 Conc: 27.13 ng/ml



#13 Dieldrin

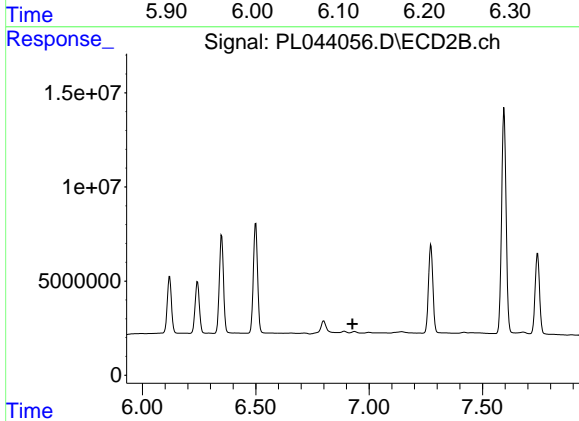
R.T.: 6.500 min  
 Delta R.T.: 0.000 min  
 Response: 75360032  
 Conc: 28.07 ng/ml



#15 Endosulfan II

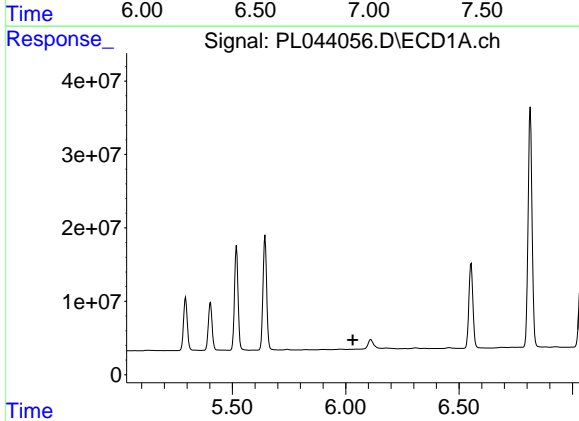
R.T.: 6.111 min  
 Delta R.T.: -0.063 min  
 Response: 20681876  
 Conc: 3.63 ng/ml

Instrument :  
 ECD\_L  
 ClientSampled :  
 RESCHK



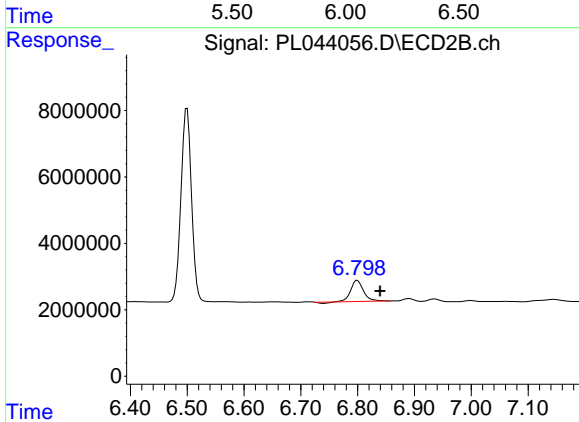
#15 Endosulfan II

R.T.: 0.000 min  
 Exp R.T. : 6.927 min  
 Response: 0  
 Conc: N.D.



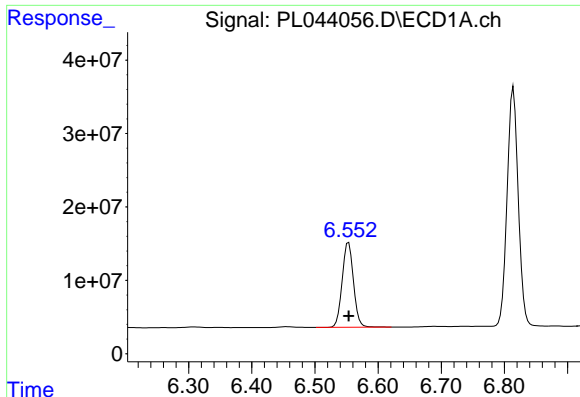
#16 4,4'-DDD

R.T.: 0.000 min  
 Exp R.T. : 6.031 min  
 Response: 0  
 Conc: N.D.



#16 4,4'-DDD

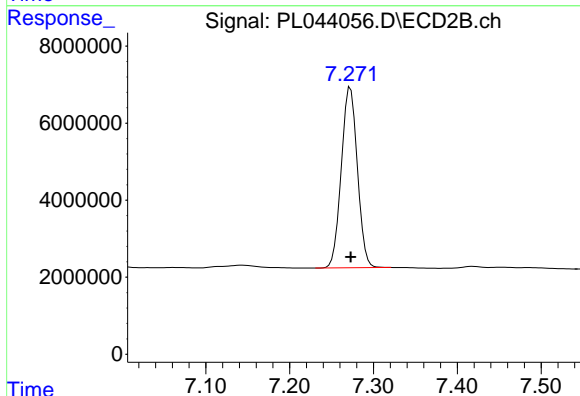
R.T.: 6.800 min  
 Delta R.T.: -0.040 min  
 Response: 9717781  
 Conc: 4.81 ng/ml



#19 Endosulfan Sulfate

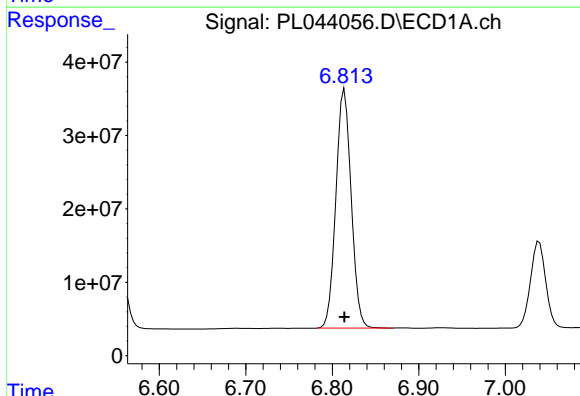
R.T.: 6.553 min  
Delta R.T.: 0.000 min  
Response: 142845863  
Conc: 24.97 ng/ml

Instrument :  
ECD\_L  
ClientSampleId :  
RESCHK



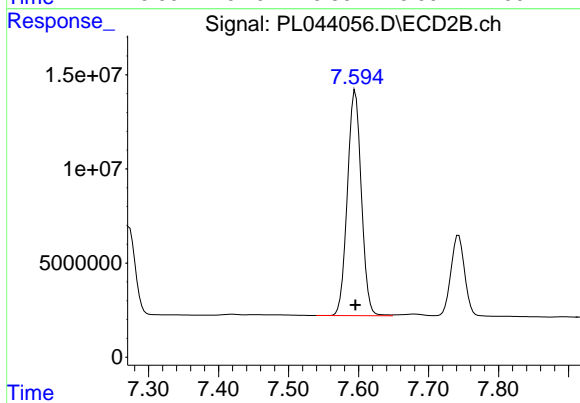
#19 Endosulfan Sulfate

R.T.: 7.273 min  
Delta R.T.: 0.000 min  
Response: 62576720  
Conc: 26.14 ng/ml



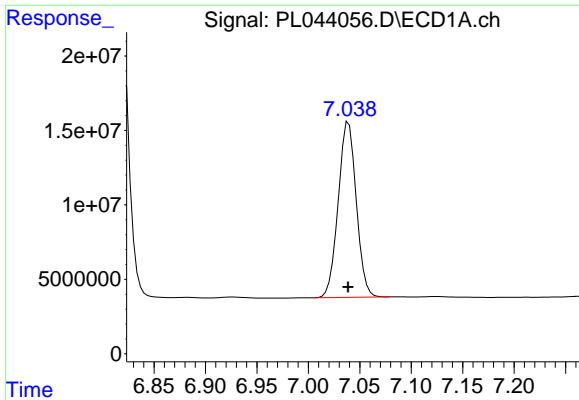
#20 Methoxychlor

R.T.: 6.814 min  
Delta R.T.: 0.000 min  
Response: 397281665  
Conc: 152.19 ng/ml



#20 Methoxychlor

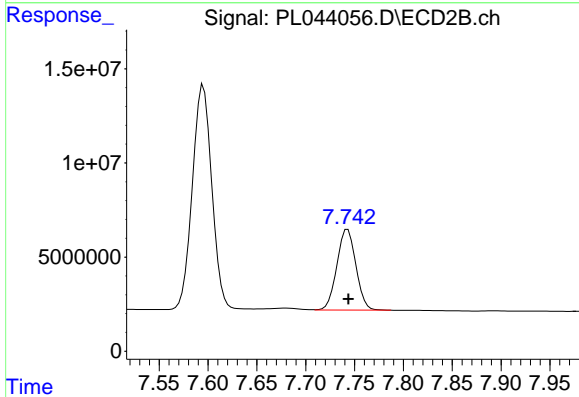
R.T.: 7.595 min  
Delta R.T.: 0.000 min  
Response: 165910165  
Conc: 141.28 ng/ml



#21 Endrin ketone

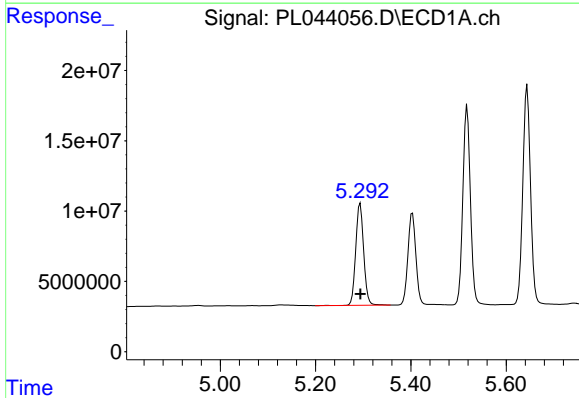
R.T.: 7.039 min  
 Delta R.T.: 0.000 min  
 Response: 144055737  
 Conc: 23.06 ng/ml

Instrument :  
 ECD\_L  
 ClientSampleId :  
 RESCHK



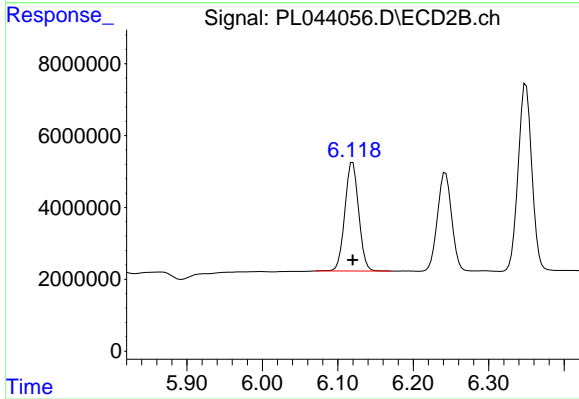
#21 Endrin ketone

R.T.: 7.743 min  
 Delta R.T.: 0.000 min  
 Response: 58067323  
 Conc: 24.46 ng/ml



#25 Chlordane-3

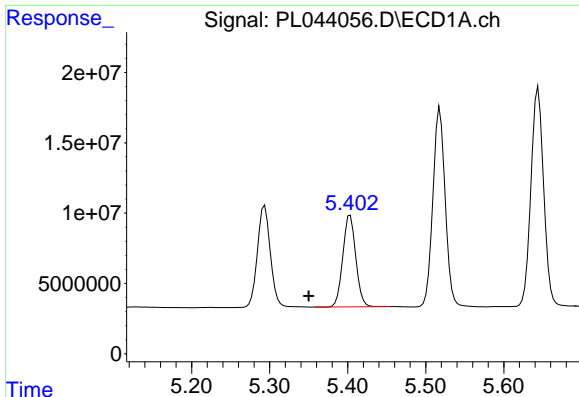
R.T.: 5.294 min  
 Delta R.T.: 0.000 min  
 Response: 83514290  
 Conc: 101.98 ng/ml



#25 Chlordane-3

R.T.: 6.120 min  
 Delta R.T.: 0.000 min  
 Response: 38436385  
 Conc: 96.99 ng/ml

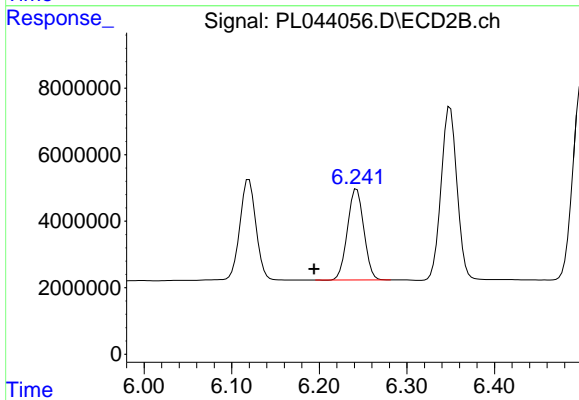




#26 Chlordane-4

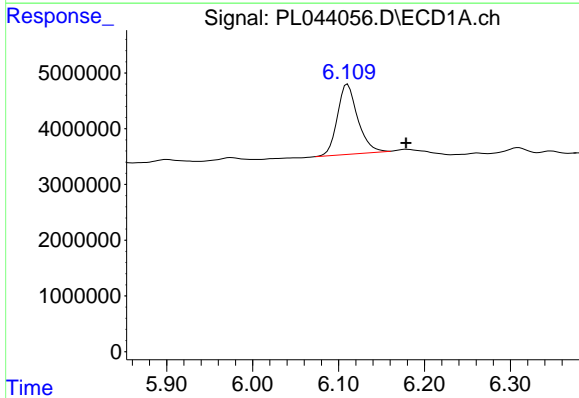
R.T.: 5.403 min  
 Delta R.T.: 0.053 min  
 Response: 75062146  
 Conc: 102.68 ng/ml

Instrument :  
 ECD\_L  
 ClientSampled :  
 RESCHK



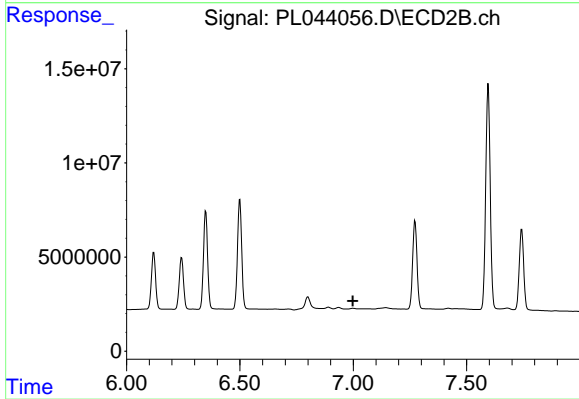
#26 Chlordane-4

R.T.: 6.243 min  
 Delta R.T.: 0.049 min  
 Response: 35632615  
 Conc: 74.62 ng/ml



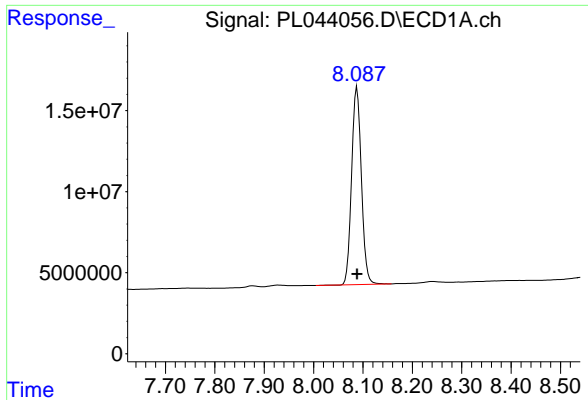
#27 Chlordane-5

R.T.: 6.111 min  
 Delta R.T.: -0.068 min  
 Response: 20681876  
 Conc: 92.09 ng/ml



#27 Chlordane-5

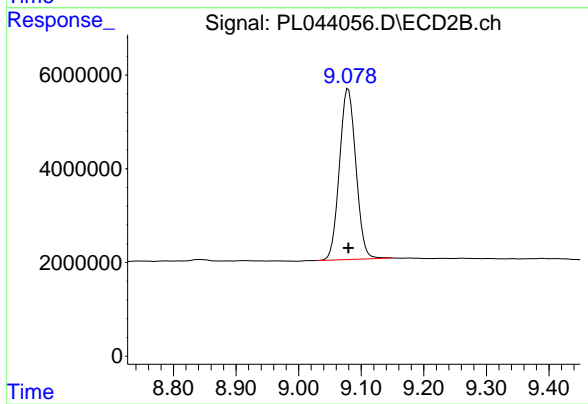
R.T.: 0.000 min  
 Exp R.T. : 6.998 min  
 Response: 0  
 Conc: N.D.



#28 Decachlorobiphenyl

R.T.: 8.088 min  
Delta R.T.: 0.000 min  
Response: 167485177  
Conc: 28.34 ng/ml

Instrument :  
ECD\_L  
ClientSampleId :  
RESCHK



#28 Decachlorobiphenyl

R.T.: 9.079 min  
Delta R.T.: 0.000 min  
Response: 66709457  
Conc: 29.46 ng/ml