

Data Path : Z:\pestpcbsrv\HPCHEM1\ECD\_L\Data\PL011819\  
 Data File : PL044055.D  
 Signal(s) : Signal #1: ECD1A.ch Signal #2: ECD2B.ch  
 Acq On : 18 Jan 2019 12:09  
 Operator : AJ\SJ  
 Sample : PEM  
 Misc :  
 ALS Vial : 3 Sample Multiplier: 1

**Instrument :**  
 ECD\_L  
**ClientSampled :**  
 PEM

**Manual Integrations**  
**APPROVED**  
 Sohil  
 1/21/2019 10:05:27 AM

Integration File signal 1: autoint1.e  
 Integration File signal 2: autoint2.e  
 Quant Time: Jan 19 03:13:01 2019  
 Quant Method : Z:\pestpcbsrv\HPCHEM1\ECD\_L\methods\PL011819.M  
 Quant Title : GC Extractables  
 QLast Update : Sat Jan 19 02:56:00 2019  
 Response via : Initial Calibration  
 Integrator: ChemStation

Volume Inj. : 2 µl  
 Signal #1 Phase : ZB-MR1 Signal #2 Phase: ZB-MR2  
 Signal #1 Info : 30M x 0.32mm x0.5 Signal #2 Info : 30M x 0.32mm x0.25µm

Compound	RT#1	RT#2	Resp#1	Resp#2	ng/ml	ng/ml
-----						
System Monitoring Compounds						
1) SA Tetrachlo...	3.384	4.008	106.8E6	49941826	19.635	21.191
28) SA Decachlor...	8.086	9.079	123.7E6	50041340	20.936m	22.101
Target Compounds						
2) A alpha-BHC	3.817	4.399	69090366	30189581	8.375	9.124
3) MA gamma-BHC...	4.097	4.684	61935769	29983399	8.510	9.736
6) B beta-BHC	4.350	4.854	28623324	14279770	9.682	10.553m
12) B 4,4'-DDE	5.516	6.348	1094428	692689	0.186m	0.289m#
14) MA Endrin	5.898	6.717	308.5E6	120.0E6	53.032	51.585
16) A 4,4'-DDD	6.030	6.840	1290004	469748	0.275m	0.232m
17) MA 4,4'-DDT	6.267	7.136	596.0E6	230.5E6	118.451	105.508m
18) B Endrin al...	6.339	7.050	1372979	553637	0.292m	0.276m
20) A Methoxychlor	6.814	7.594	764.8E6	300.4E6	292.985	255.795
21) B Endrin ke...	7.037	7.741	3157781	1485303	0.505m	0.626m
-----						

(f)=RT Delta > 1/2 Window (#)=Amounts differ by > 25% (m)=manual int.

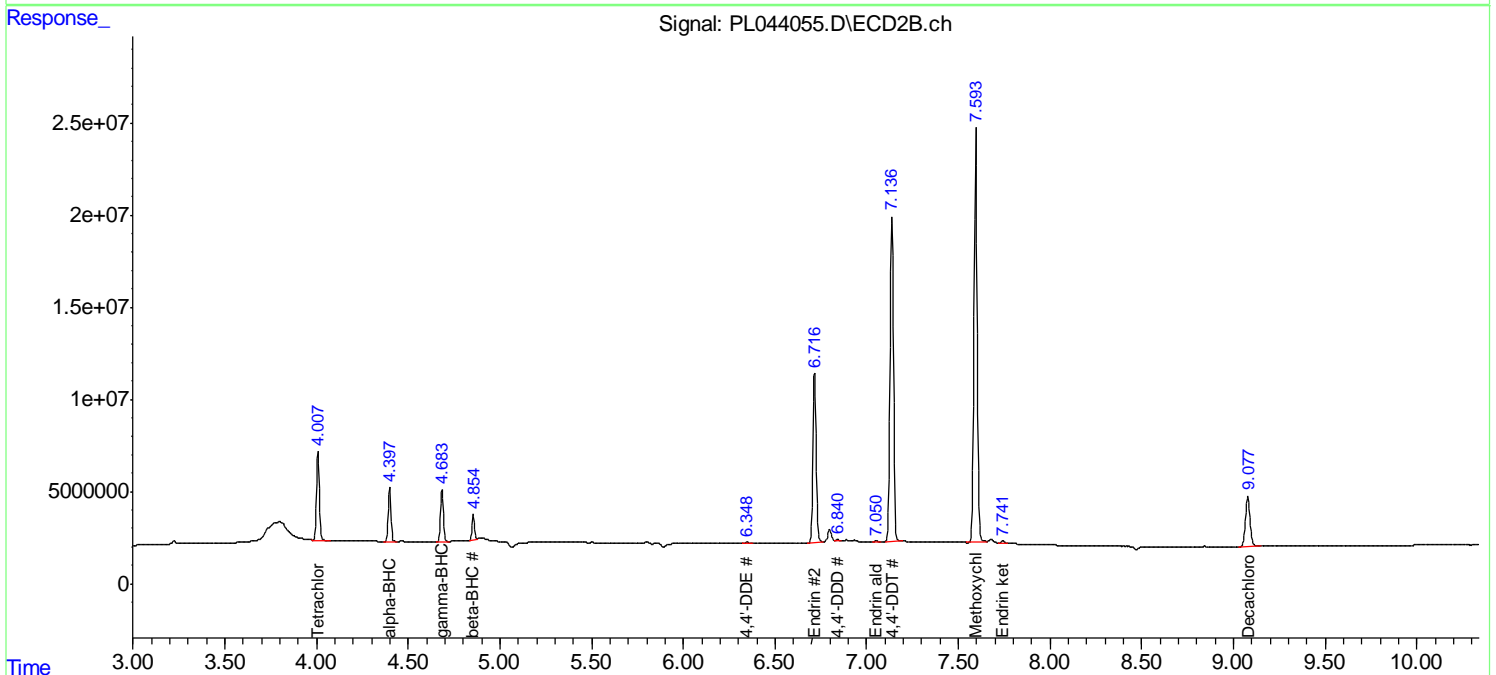
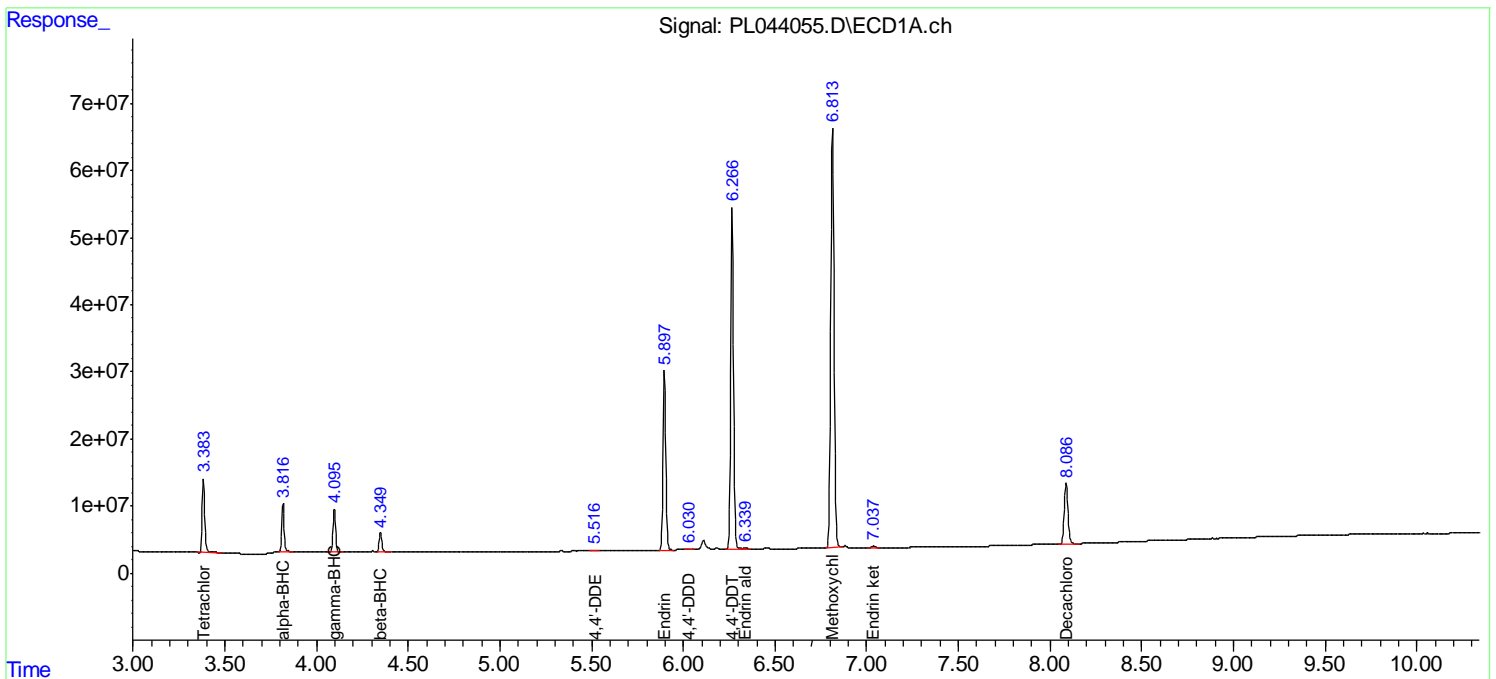
Data Path : Z:\pestpcbsrv\HPCHEM1\ECD\_L\Data\PL011819\  
 Data File : PL044055.D  
 Signal(s) : Signal #1: ECD1A.ch Signal #2: ECD2B.ch  
 Acq On : 18 Jan 2019 12:09  
 Operator : AJ\SJ  
 Sample : PEM  
 Misc :  
 ALS Vial : 3 Sample Multiplier: 1

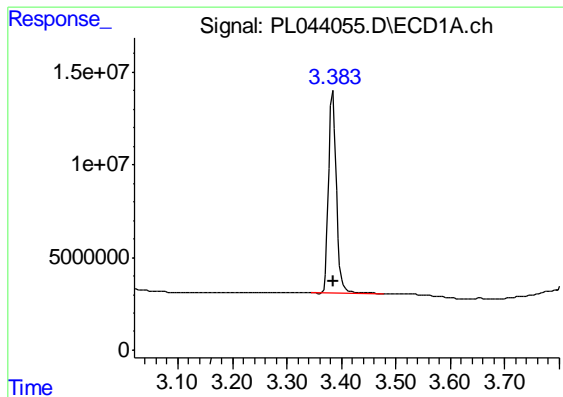
Instrument :  
 ECD\_L  
 ClientSampled :  
 PEM

Manual Integrations  
**APPROVED**  
 Sohil  
 1/21/2019 10:05:27 AM

Integration File signal 1: autoint1.e  
 Integration File signal 2: autoint2.e  
 Quant Time: Jan 19 03:13:01 2019  
 Quant Method : Z:\pestpcbsrv\HPCHEM1\ECD\_L\methods\PL011819.M  
 Quant Title : GC Extractables  
 QLast Update : Sat Jan 19 02:56:00 2019  
 Response via : Initial Calibration  
 Integrator: ChemStation

Volume Inj. : 2 µl  
 Signal #1 Phase : ZB-MR1 Signal #2 Phase: ZB-MR2  
 Signal #1 Info : 30M x 0.32mm x0.5 Signal #2 Info : 30M x 0.32mm x0.25µm





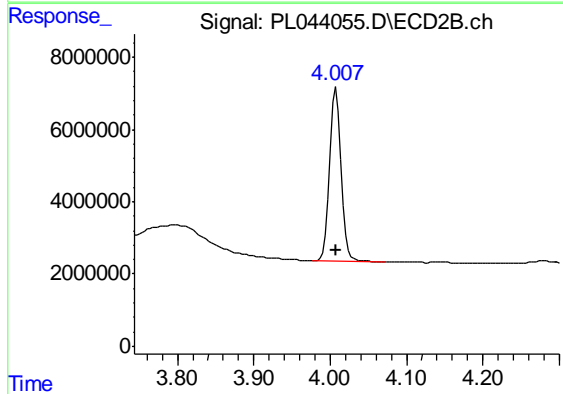
#1 Tetrachloro-m-xylene

R.T.: 3.384 min  
 Delta R.T.: 0.000 min  
 Response: 106836610  
 Conc: 19.64 ng/ml

Instrument :  
 ECD\_L  
 ClientSampled :  
 PEM

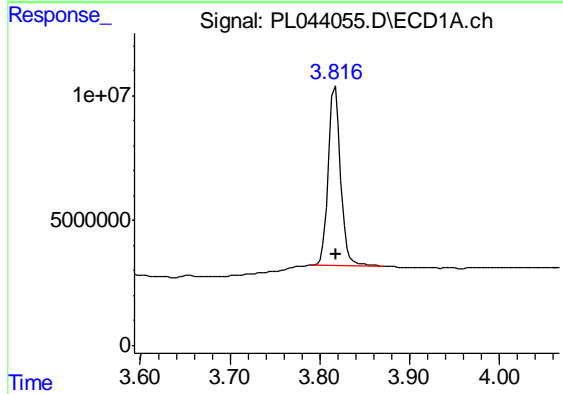
Manual Integrations  
 APPROVED

Sohil  
 1/21/2019 10:05:27 AM



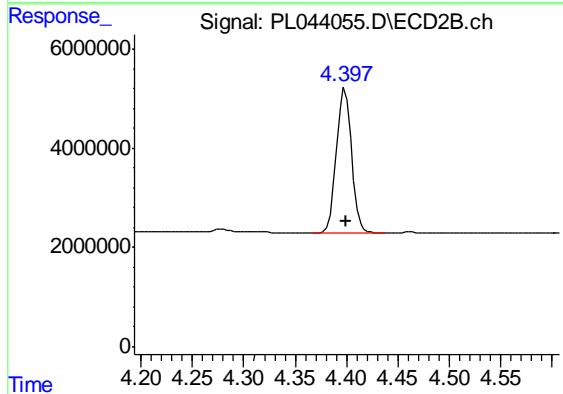
#1 Tetrachloro-m-xylene

R.T.: 4.008 min  
 Delta R.T.: 0.000 min  
 Response: 49941826  
 Conc: 21.19 ng/ml



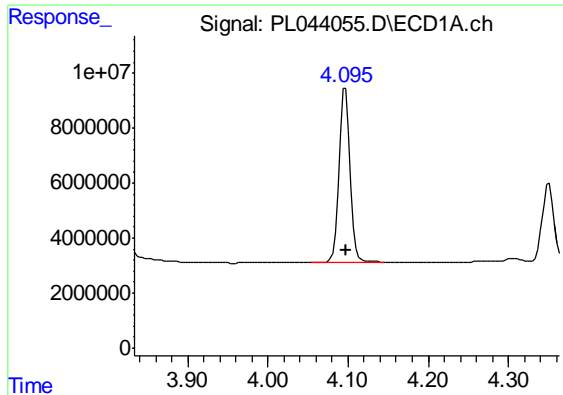
#2 alpha-BHC

R.T.: 3.817 min  
 Delta R.T.: 0.000 min  
 Response: 69090366  
 Conc: 8.38 ng/ml



#2 alpha-BHC

R.T.: 4.399 min  
 Delta R.T.: 0.000 min  
 Response: 30189581  
 Conc: 9.12 ng/ml



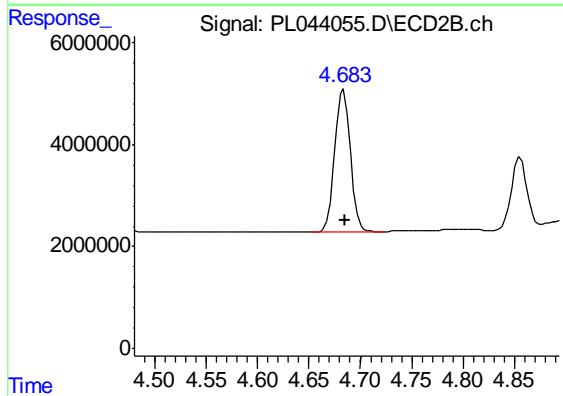
#3 gamma-BHC (Lindane)

R.T.: 4.097 min  
 Delta R.T.: 0.000 min  
 Response: 61935769  
 Conc: 8.51 ng/ml

Instrument :  
 ECD\_L  
 ClientSampled :  
 PEM

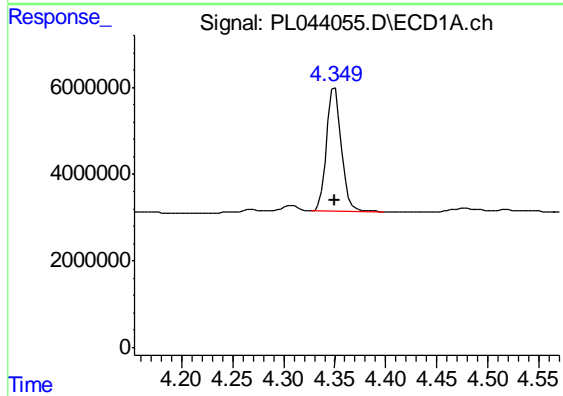
Manual Integrations  
 APPROVED

Sohil  
 1/21/2019 10:05:27 AM



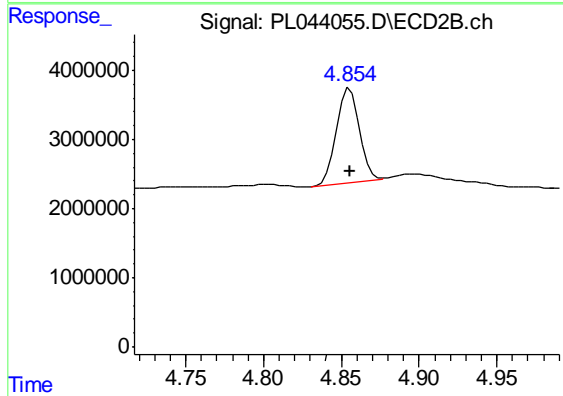
#3 gamma-BHC (Lindane)

R.T.: 4.684 min  
 Delta R.T.: 0.000 min  
 Response: 29983399  
 Conc: 9.74 ng/ml



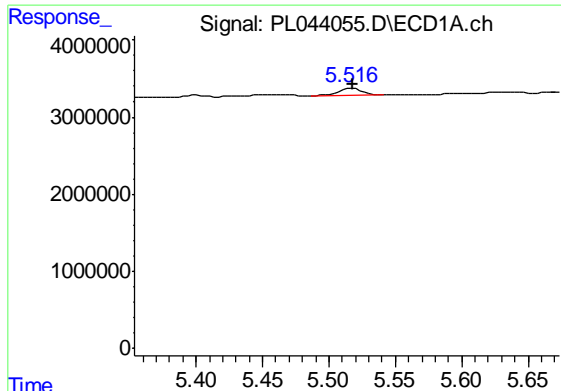
#6 beta-BHC

R.T.: 4.350 min  
 Delta R.T.: 0.000 min  
 Response: 28623324  
 Conc: 9.68 ng/ml



#6 beta-BHC

R.T.: 4.854 min  
 Delta R.T.: -0.002 min  
 Response: 14279770  
 Conc: 10.55 ng/ml m

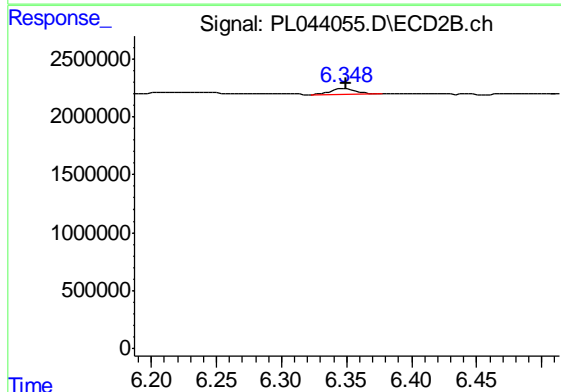


#12 4,4'-DDE

R.T.: 5.516 min  
 Delta R.T.: -0.003 min  
 Response: 1094428  
 Conc: 0.19 ng/ml m

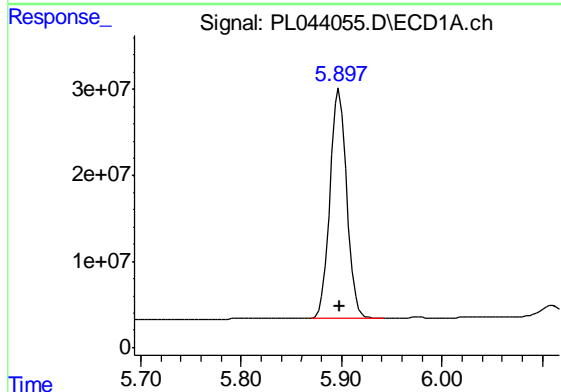
Instrument :  
 ECD\_L  
 ClientSampled :  
 PEM

Manual Integrations  
 APPROVED  
 Sohil  
 1/21/2019 10:05:27 AM



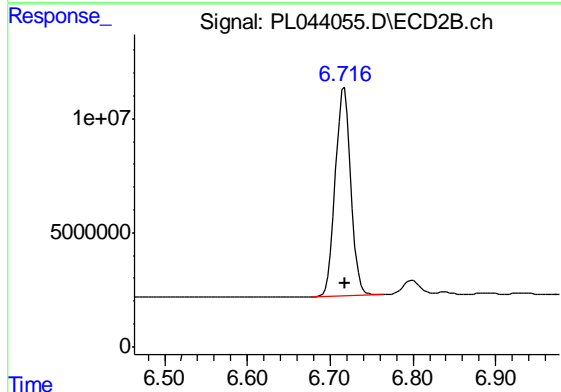
#12 4,4'-DDE

R.T.: 6.348 min  
 Delta R.T.: -0.002 min  
 Response: 692689  
 Conc: 0.29 ng/ml m



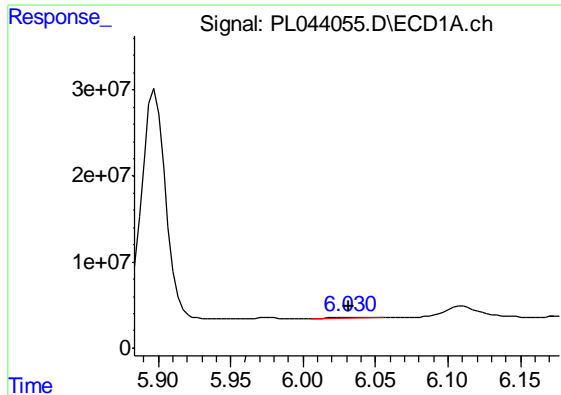
#14 Endrin

R.T.: 5.898 min  
 Delta R.T.: 0.000 min  
 Response: 308479193  
 Conc: 53.03 ng/ml



#14 Endrin

R.T.: 6.717 min  
 Delta R.T.: 0.000 min  
 Response: 12006668  
 Conc: 51.59 ng/ml



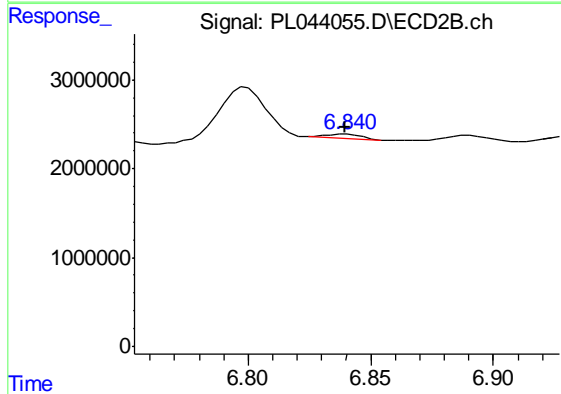
#16 4,4'-DDD

R.T.: 6.030 min  
 Delta R.T.: -0.001 min  
 Response: 1290004  
 Conc: 0.28 ng/ml m

Instrument :  
 ECD\_L  
 ClientSampled :  
 PEM

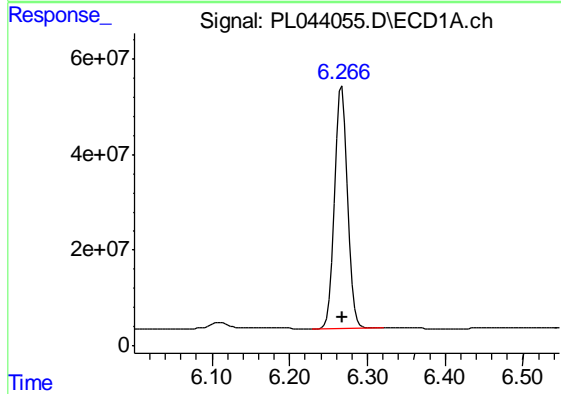
Manual Integrations  
 APPROVED

Sohil  
 1/21/2019 10:05:27 AM



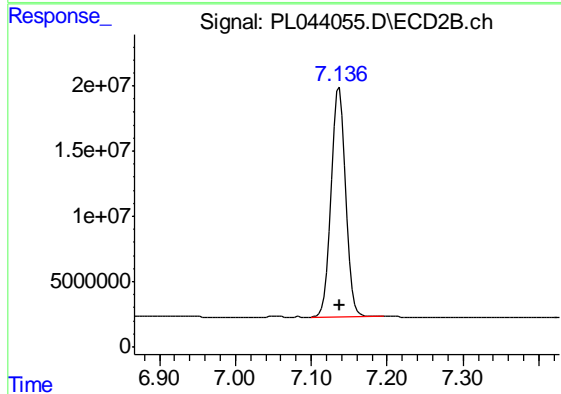
#16 4,4'-DDD

R.T.: 6.840 min  
 Delta R.T.: 0.000 min  
 Response: 469748  
 Conc: 0.23 ng/ml m



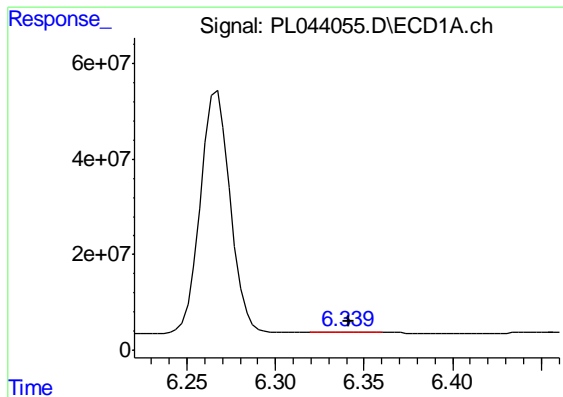
#17 4,4'-DDT

R.T.: 6.267 min  
 Delta R.T.: 0.000 min  
 Response: 596010213  
 Conc: 118.45 ng/ml



#17 4,4'-DDT

R.T.: 7.136 min  
 Delta R.T.: -0.002 min  
 Response: 230521836  
 Conc: 105.51 ng/ml m



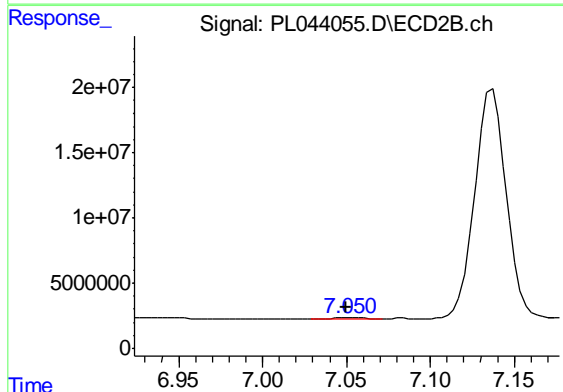
#18 Endrin aldehyde

R.T.: 6.339 min  
 Delta R.T.: -0.003 min  
 Response: 1372979  
 Conc: 0.29 ng/ml m

Instrument :  
 ECD\_L  
 ClientSampled :  
 PEM

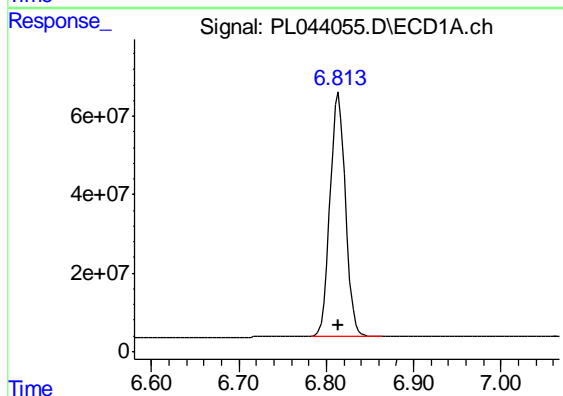
Manual Integrations  
 APPROVED

Sohil  
 1/21/2019 10:05:27 AM



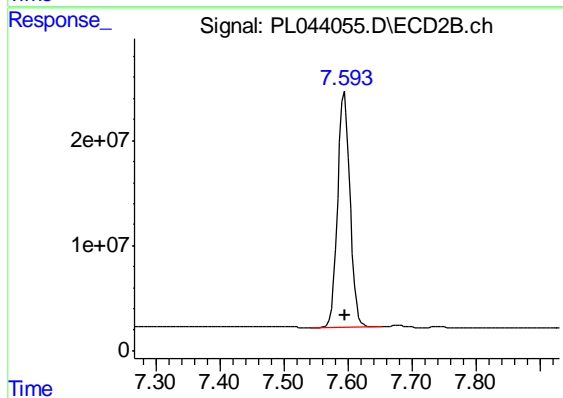
#18 Endrin aldehyde

R.T.: 7.050 min  
 Delta R.T.: 0.000 min  
 Response: 553637  
 Conc: 0.28 ng/ml m



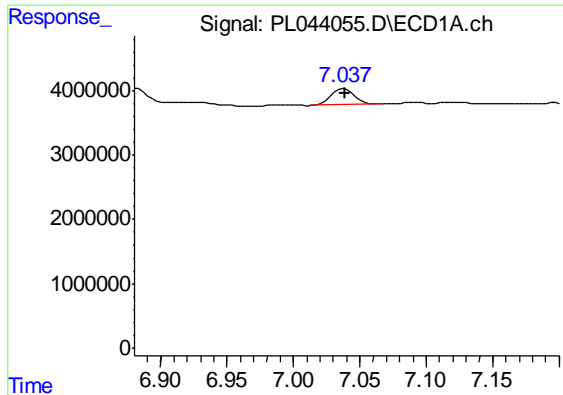
#20 Methoxychlor

R.T.: 6.814 min  
 Delta R.T.: 0.000 min  
 Response: 764838169  
 Conc: 292.99 ng/ml



#20 Methoxychlor

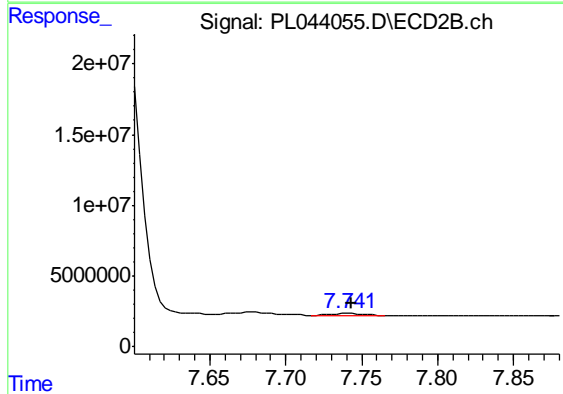
R.T.: 7.594 min  
 Delta R.T.: 0.000 min  
 Response: 300390075  
 Conc: 255.79 ng/ml



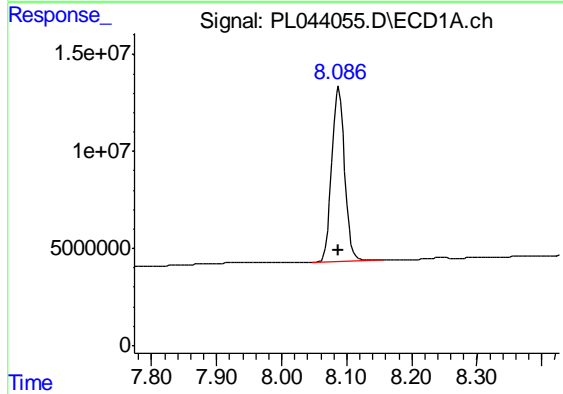
#21 Endrin ketone  
 R.T.: 7.037 min  
 Delta R.T.: -0.002 min  
 Response: 3157781  
 Conc: 0.51 ng/ml m

Instrument :  
 ECD\_L  
 ClientSampled :  
 PEM

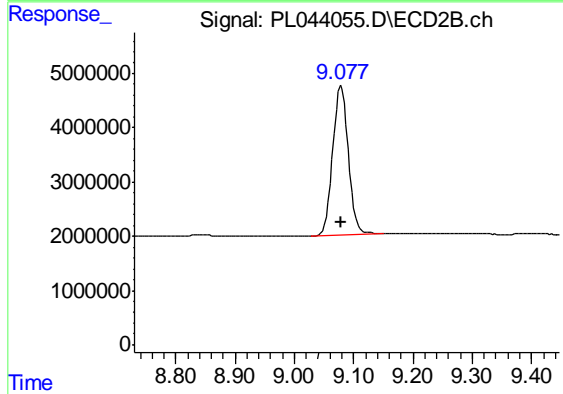
Manual Integrations  
**APPROVED**  
 Sohil  
 1/21/2019 10:05:27 AM



#21 Endrin ketone  
 R.T.: 7.741 min  
 Delta R.T.: -0.003 min  
 Response: 1485303  
 Conc: 0.63 ng/ml m



#28 Decachlorobiphenyl  
 R.T.: 8.086 min  
 Delta R.T.: -0.001 min  
 Response: 123738082  
 Conc: 20.94 ng/ml m



#28 Decachlorobiphenyl  
 R.T.: 9.079 min  
 Delta R.T.: 0.000 min  
 Response: 50041340  
 Conc: 22.10 ng/ml