

Data Path : Z:\pestpcbsrv\HPCHEM1\ECD_L\Data\PL011819\
 Data File : PL044059.D
 Signal(s) : Signal #1: ECD1A.ch Signal #2: ECD2B.ch
 Acq On : 18 Jan 2019 13:06
 Operator : AJ\SJ
 Sample : PSTDICC050
 Misc :
 ALS Vial : 7 Sample Multiplier: 1

Instrument :
 ECD_L
 ClientSampleId :
 PSTDICC050

Integration File signal 1: autoint1.e
 Integration File signal 2: autoint2.e
 Quant Time: Jan 18 14:00:02 2019
 Quant Method : Z:\pestpcbsrv\HPCHEM1\ECD_L\methods\PL011819.M
 Quant Title : GC Extractables
 QLast Update : Fri Jan 18 13:58:48 2019
 Response via : Initial Calibration
 Integrator: ChemStation

Volume Inj. : 2 µl
 Signal #1 Phase : ZB-MR1 Signal #2 Phase: ZB-MR2
 Signal #1 Info : 30M x 0.32mm x0.5 Signal #2 Info : 30M x 0.32mm x0.25µm

Compound	RT#1	RT#2	Resp#1	Resp#2	ng/ml	ng/ml

System Monitoring Compounds						
1) SA Tetrachlo...	3.385	4.008	284.2E6	121.5E6	50.000	50.000
28) SA Decachlor...	8.088	9.080	300.6E6	115.6E6	50.000	50.000
Target Compounds						
2) A alpha-BHC	3.818	4.399	441.3E6	173.6E6	50.000	50.000
3) MA gamma-BHC...	4.097	4.685	392.2E6	160.1E6	50.000	50.000
4) MA Heptachlor	4.387	5.194	393.2E6	160.4E6	50.000	50.000
5) MB Aldrin	4.629	5.499	389.1E6	154.6E6	50.000	50.000
6) B beta-BHC	4.351	4.856	151.3E6	69481982	50.000	50.000
7) B delta-BHC	4.548	5.073	364.9E6	122.4E6	50.000	50.000
8) B Heptachlo...	5.069	5.886	348.9E6	128.2E6	50.000	50.000
9) A Endosulfan I	5.403	6.243	325.0E6	132.4E6	50.000	50.000
10) B gamma-Chl...	5.294	6.120	353.7E6	144.4E6	50.000	50.000
11) B alpha-Chl...	5.350	6.193	345.9E6	143.1E6	50.000	50.000
12) B 4,4'-DDE	5.518	6.350	316.4E6	124.3E6	50.000	50.000
13) MA Dieldrin	5.644	6.499	346.6E6	138.3E6	50.000	50.000
14) MA Endrin	5.899	6.717	309.5E6	125.0E6	50.000	50.000
15) B Endosulfa...	6.174	6.927	294.5E6	120.7E6	50.000	50.000
16) A 4,4'-DDD	6.031	6.840	256.9E6	103.3E6	50.000	50.000
17) MA 4,4'-DDT	6.268	7.138	270.9E6	110.4E6	50.000	50.000
18) B Endrin al...	6.341	7.050	245.2E6	101.9E6	50.000	50.000
19) B Endosulfa...	6.553	7.273	300.7E6	121.9E6	50.000	50.000
20) A Methoxychlor	6.814	7.595	135.6E6	60164999	50.000	50.000
21) B Endrin ke...	7.039	7.744	331.9E6	122.3E6	50.000	50.000

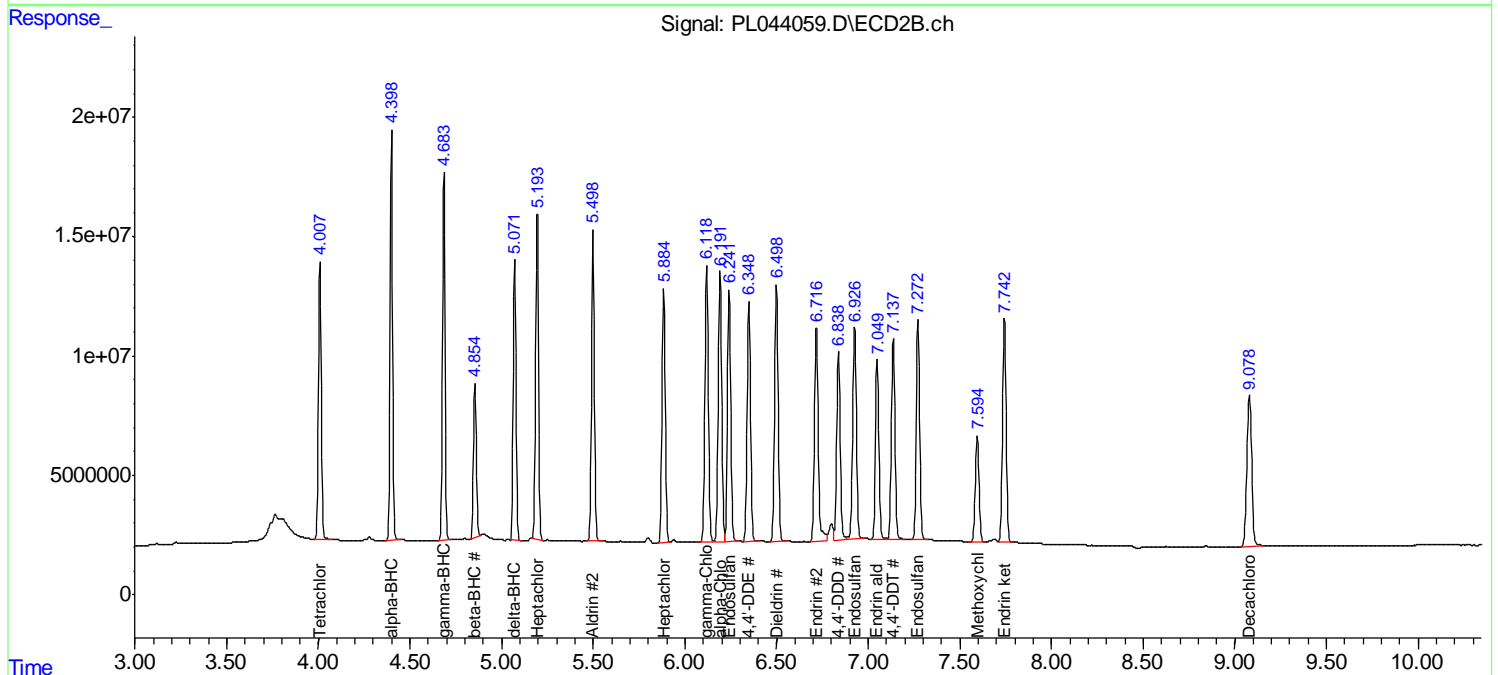
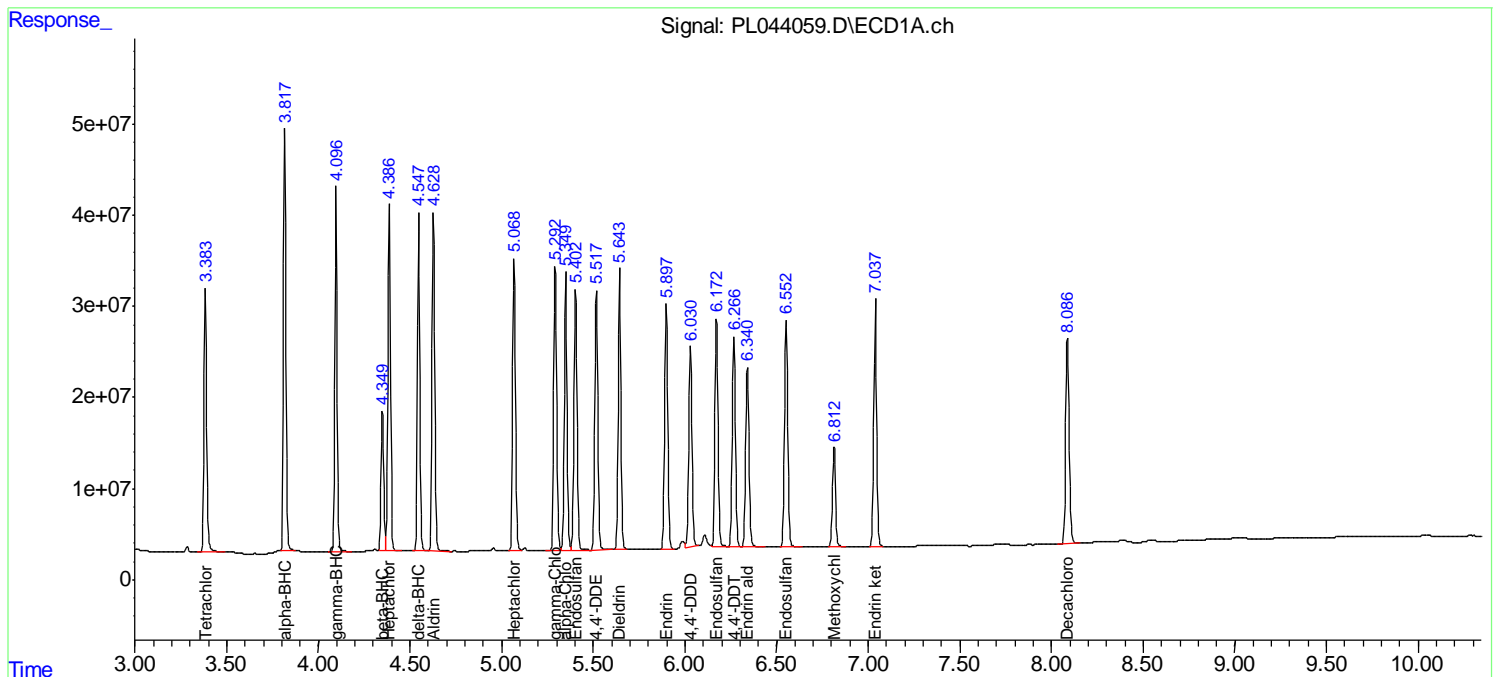
(f)=RT Delta > 1/2 Window (#)=Amounts differ by > 25% (m)=manual int.

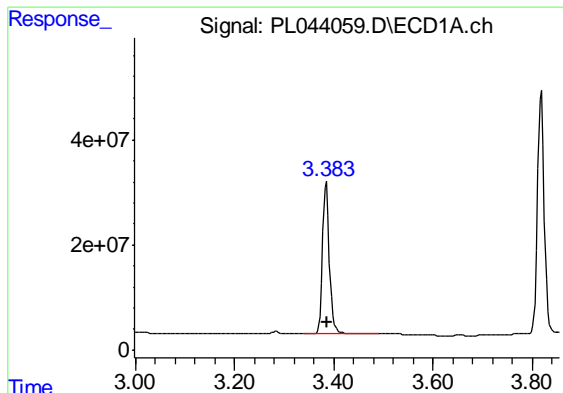
Data Path : Z:\pestpcbsrv\HPCHEM1\ECD_L\Data\PL011819\
 Data File : PL044059.D
 Signal(s) : Signal #1: ECD1A.ch Signal #2: ECD2B.ch
 Acq On : 18 Jan 2019 13:06
 Operator : AJ\SJ
 Sample : PSTDI0050
 Misc :
 ALS Vial : 7 Sample Multiplier: 1

Instrument :
 ECD_L
 Client Sampled :
 PSTDI0050

Integration File signal 1: autoint1.e
 Integration File signal 2: autoint2.e
 Quant Time: Jan 18 14:00:02 2019
 Quant Method : Z:\pestpcbsrv\HPCHEM1\ECD_L\methods\PL011819.M
 Quant Title : GC Extractables
 QLast Update : Fri Jan 18 13:58:48 2019
 Response via : Initial Calibration
 Integrator: ChemStation

Volume Inj. : 2 µl
 Signal #1 Phase : ZB-MR1 Signal #2 Phase: ZB-MR2
 Signal #1 Info : 30M x 0.32mm x0.5 Signal #2 Info : 30M x 0.32mm x0.25µm

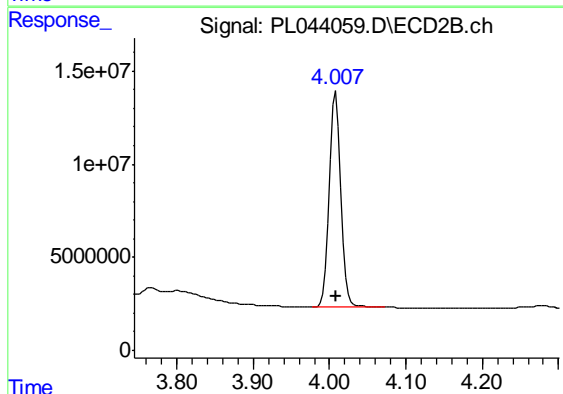




#1 Tetrachloro-m-xylene

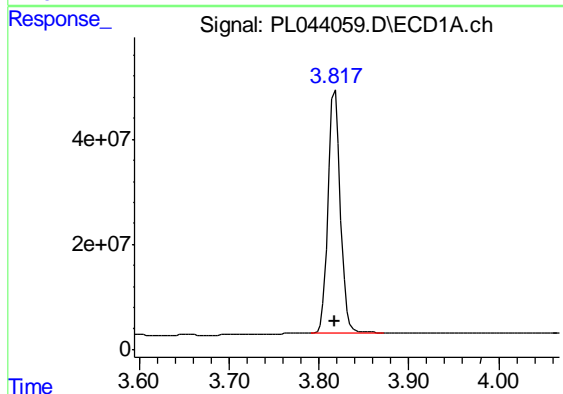
R.T.: 3.385 min
 Delta R.T.: 0.000 min
 Response: 284175379
 Conc: 50.00 ng/ml

Instrument :
 ECD_L
 ClientSampleId :
 PSTDICC050



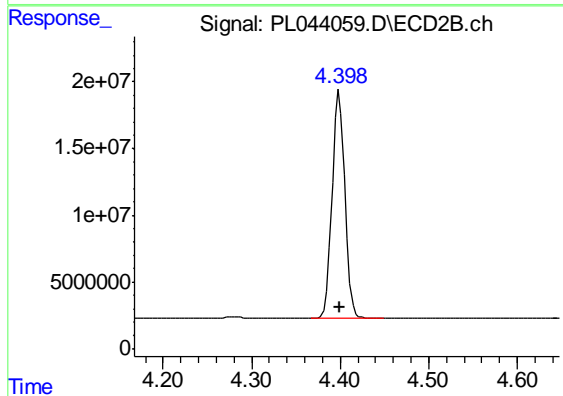
#1 Tetrachloro-m-xylene

R.T.: 4.008 min
 Delta R.T.: 0.000 min
 Response: 121509750
 Conc: 50.00 ng/ml



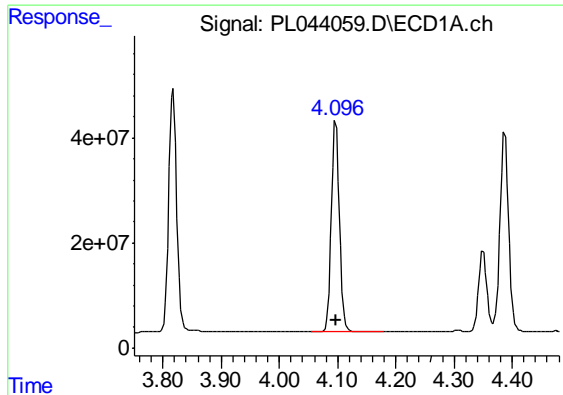
#2 alpha-BHC

R.T.: 3.818 min
 Delta R.T.: 0.000 min
 Response: 441281401
 Conc: 50.00 ng/ml



#2 alpha-BHC

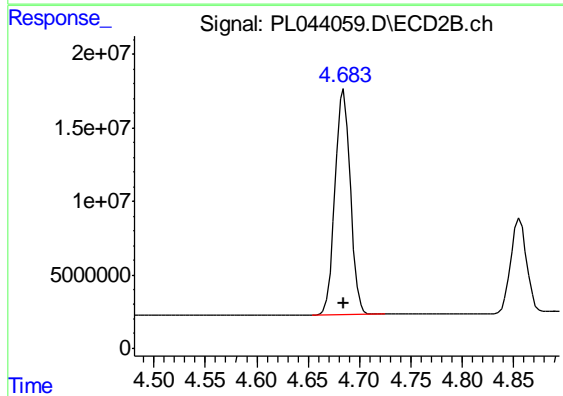
R.T.: 4.399 min
 Delta R.T.: 0.000 min
 Response: 173639807
 Conc: 50.00 ng/ml



#3 gamma-BHC (Lindane)

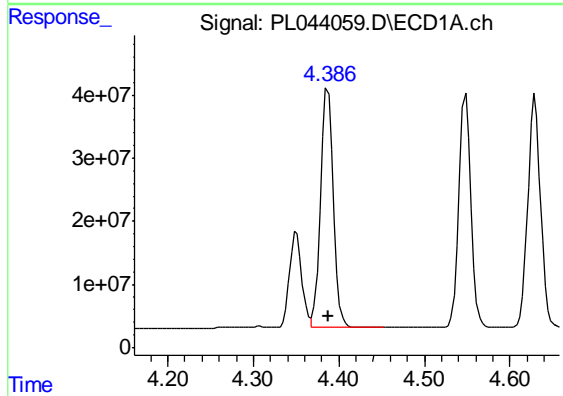
R.T.: 4.097 min
 Delta R.T.: 0.000 min
 Response: 392218385
 Conc: 50.00 ng/ml

Instrument :
 ECD_L
 ClientSampleId :
 PSTDICC050



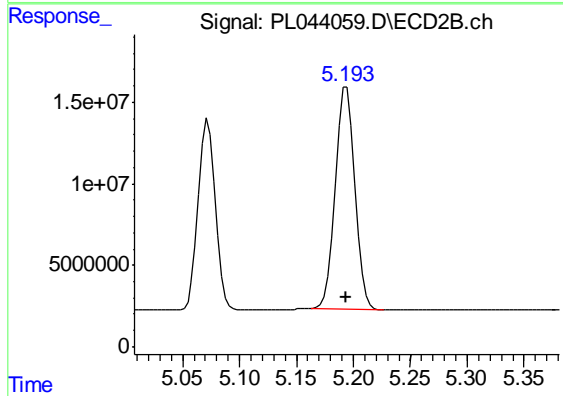
#3 gamma-BHC (Lindane)

R.T.: 4.685 min
 Delta R.T.: 0.000 min
 Response: 160149182
 Conc: 50.00 ng/ml



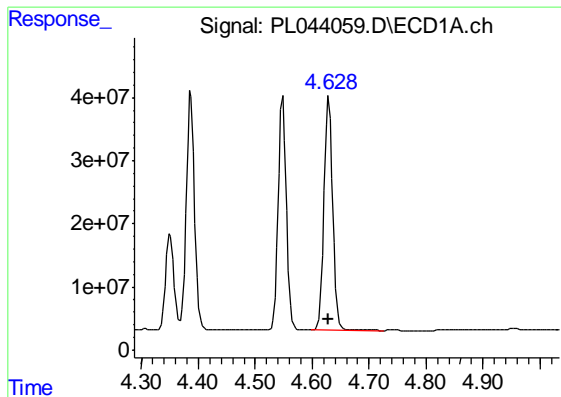
#4 Heptachlor

R.T.: 4.387 min
 Delta R.T.: 0.000 min
 Response: 393236303
 Conc: 50.00 ng/ml



#4 Heptachlor

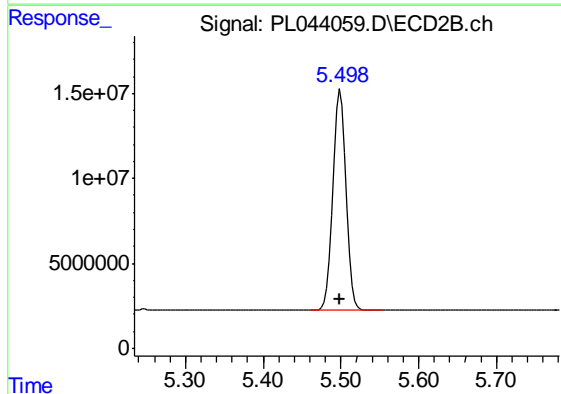
R.T.: 5.194 min
 Delta R.T.: 0.000 min
 Response: 160420992
 Conc: 50.00 ng/ml



#5 Aldrin

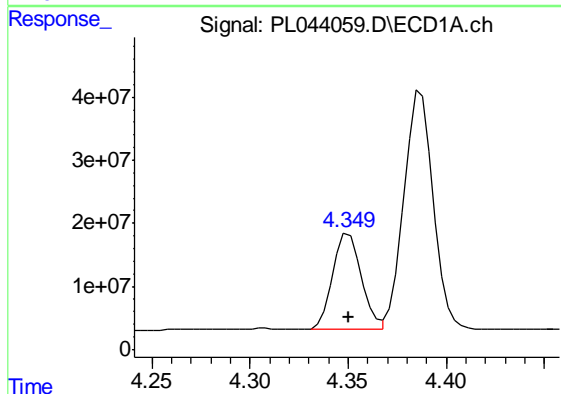
R.T.: 4.629 min
 Delta R.T.: 0.000 min
 Response: 389142857
 Conc: 50.00 ng/ml

Instrument :
 ECD_L
 ClientSampleId :
 PSTDICC050



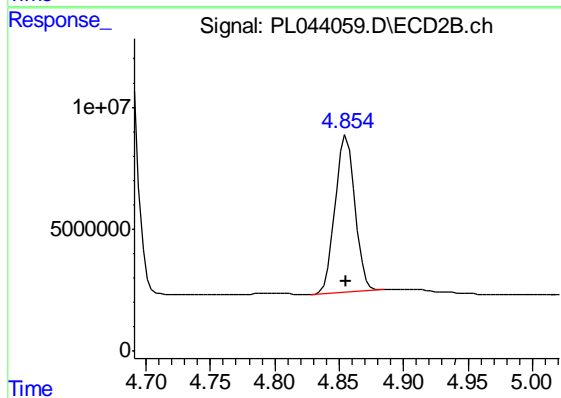
#5 Aldrin

R.T.: 5.499 min
 Delta R.T.: 0.000 min
 Response: 154584184
 Conc: 50.00 ng/ml



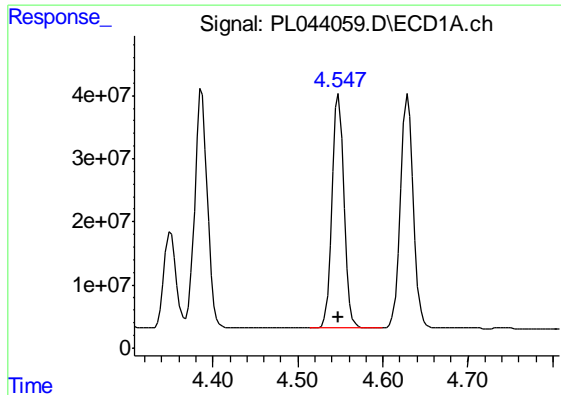
#6 beta-BHC

R.T.: 4.351 min
 Delta R.T.: 0.000 min
 Response: 151287680
 Conc: 50.00 ng/ml



#6 beta-BHC

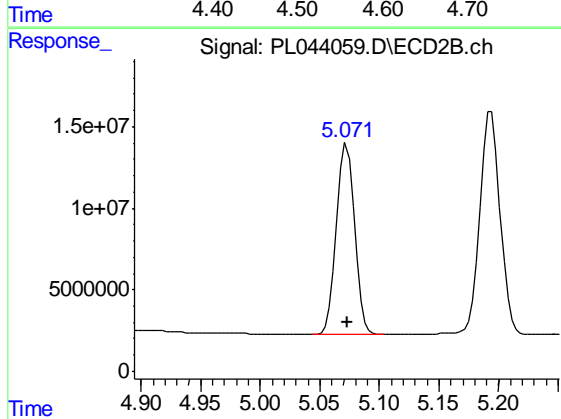
R.T.: 4.856 min
 Delta R.T.: 0.000 min
 Response: 69481982
 Conc: 50.00 ng/ml



#7 delta-BHC

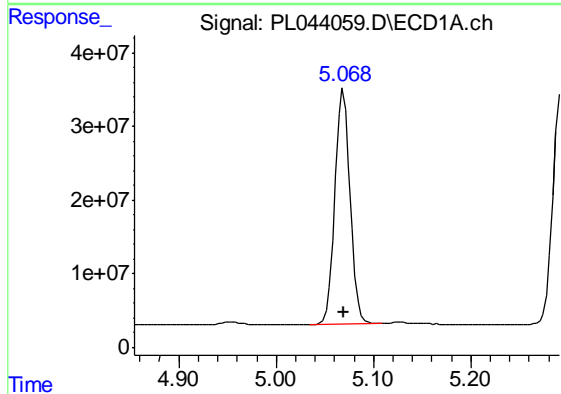
R.T.: 4.548 min
Delta R.T.: 0.000 min
Response: 364938914
Conc: 50.00 ng/ml

Instrument :
ECD_L
ClientSampleId :
PSTDICC050



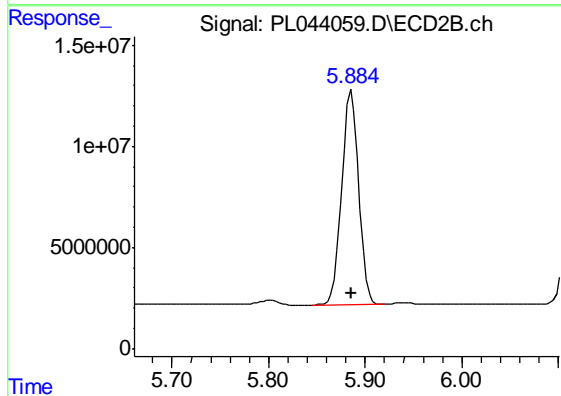
#7 delta-BHC

R.T.: 5.073 min
Delta R.T.: 0.000 min
Response: 122410704
Conc: 50.00 ng/ml



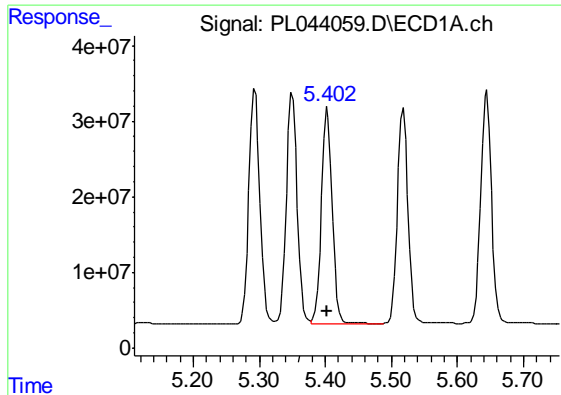
#8 Heptachlor epoxide

R.T.: 5.069 min
Delta R.T.: 0.000 min
Response: 348876149
Conc: 50.00 ng/ml



#8 Heptachlor epoxide

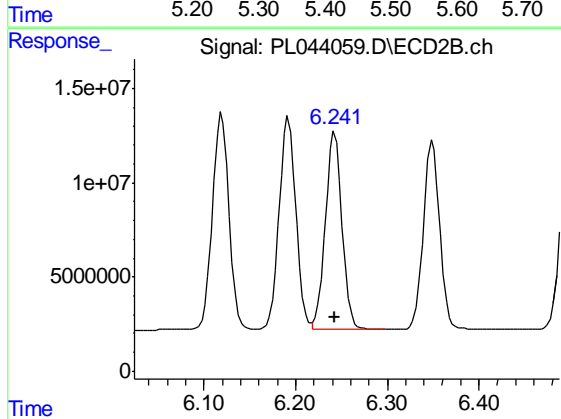
R.T.: 5.886 min
Delta R.T.: 0.000 min
Response: 128227182
Conc: 50.00 ng/ml



#9 Endosulfan I

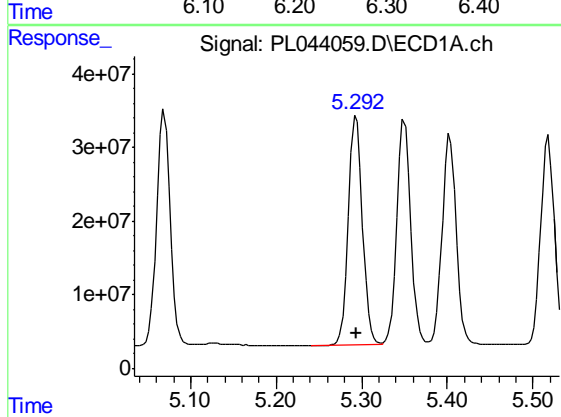
R.T.: 5.403 min
 Delta R.T.: 0.000 min
 Response: 325009500
 Conc: 50.00 ng/ml

Instrument :
 ECD_L
 ClientSampleId :
 PSTDICC050



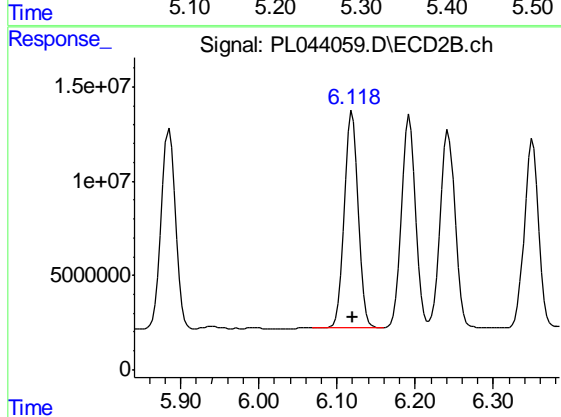
#9 Endosulfan I

R.T.: 6.243 min
 Delta R.T.: 0.000 min
 Response: 132392304
 Conc: 50.00 ng/ml



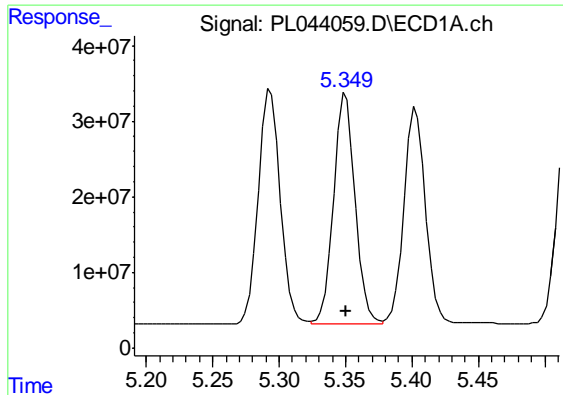
#10 gamma-Chlordane

R.T.: 5.294 min
 Delta R.T.: 0.000 min
 Response: 353685624
 Conc: 50.00 ng/ml



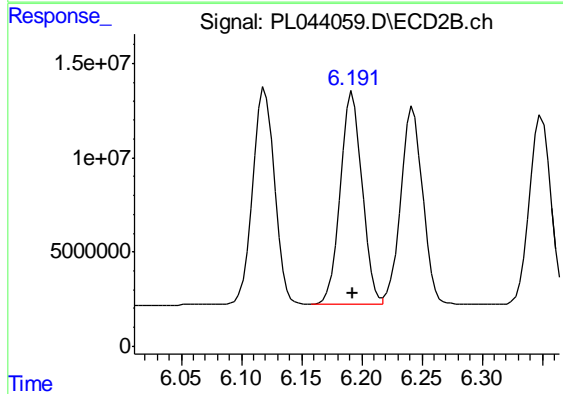
#10 gamma-Chlordane

R.T.: 6.120 min
 Delta R.T.: 0.000 min
 Response: 144396970
 Conc: 50.00 ng/ml

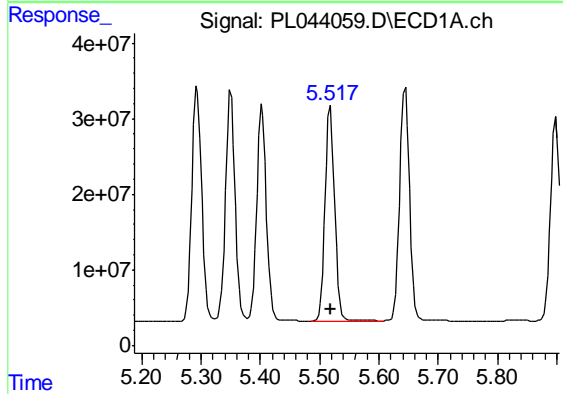


#11 alpha-Chlordane
 R.T.: 5.350 min
 Delta R.T.: 0.000 min
 Response: 345894682
 Conc: 50.00 ng/ml

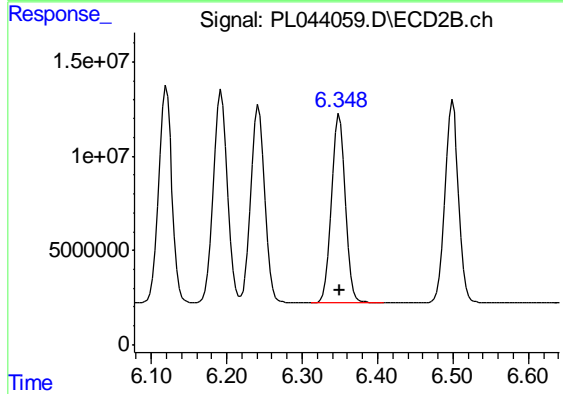
Instrument :
 ECD_L
 ClientSampleId :
 PSTDICC050



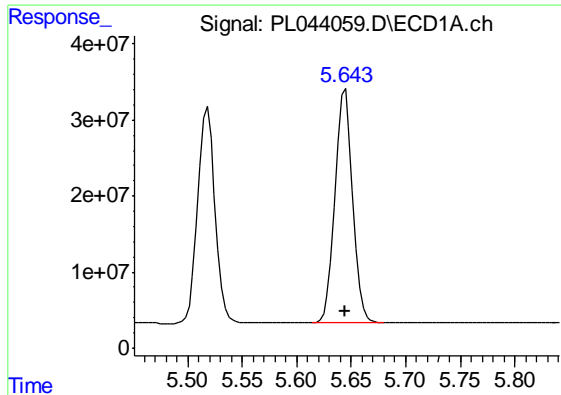
#11 alpha-Chlordane
 R.T.: 6.193 min
 Delta R.T.: 0.000 min
 Response: 143055038
 Conc: 50.00 ng/ml



#12 4,4'-DDE
 R.T.: 5.518 min
 Delta R.T.: 0.000 min
 Response: 316383878
 Conc: 50.00 ng/ml



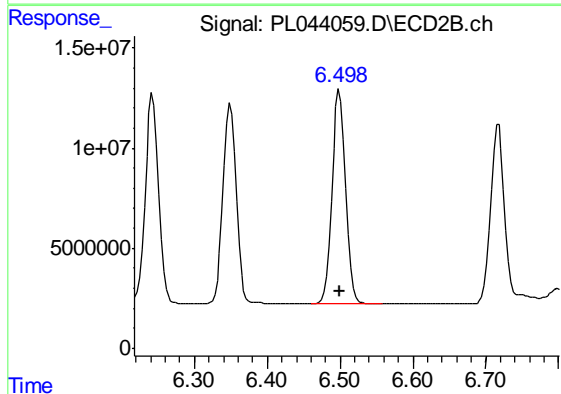
#12 4,4'-DDE
 R.T.: 6.350 min
 Delta R.T.: 0.000 min
 Response: 124349814
 Conc: 50.00 ng/ml



#13 Dieldrin

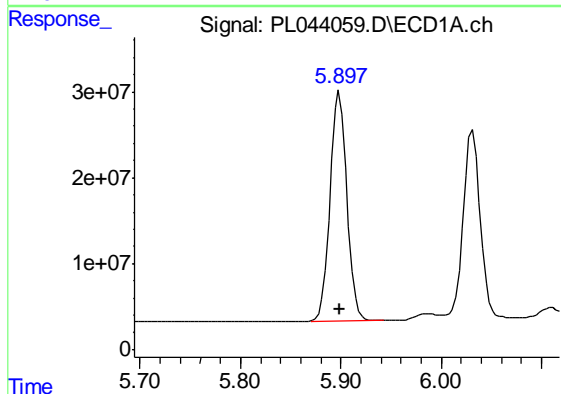
R.T.: 5.644 min
 Delta R.T.: 0.000 min
 Response: 346604886
 Conc: 50.00 ng/ml

Instrument :
 ECD_L
 ClientSampled :
 PSTDICC050



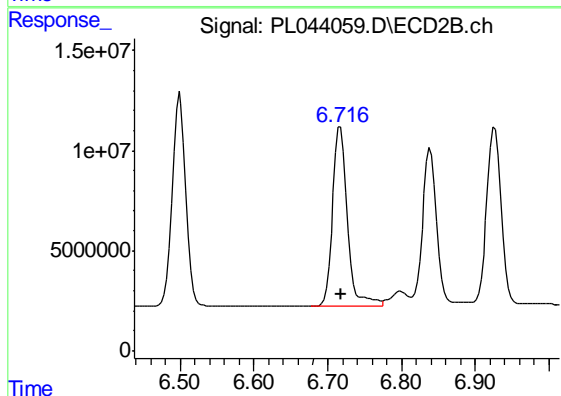
#13 Dieldrin

R.T.: 6.499 min
 Delta R.T.: 0.000 min
 Response: 138302163
 Conc: 50.00 ng/ml



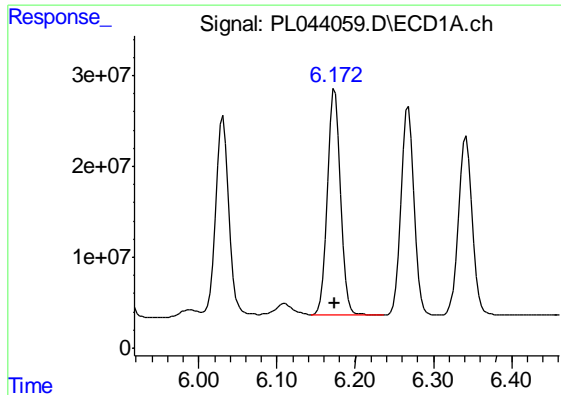
#14 Endrin

R.T.: 5.899 min
 Delta R.T.: 0.000 min
 Response: 309458085
 Conc: 50.00 ng/ml



#14 Endrin

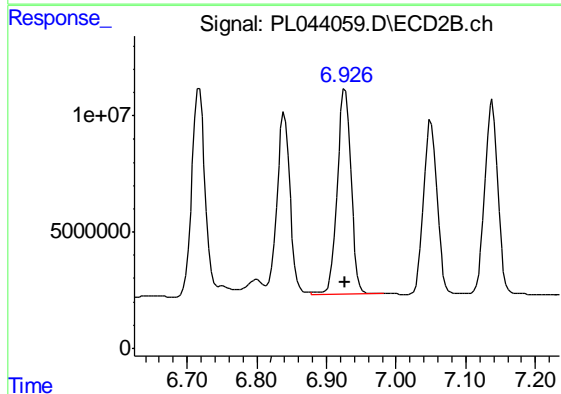
R.T.: 6.717 min
 Delta R.T.: 0.000 min
 Response: 125014319
 Conc: 50.00 ng/ml



#15 Endosulfan II

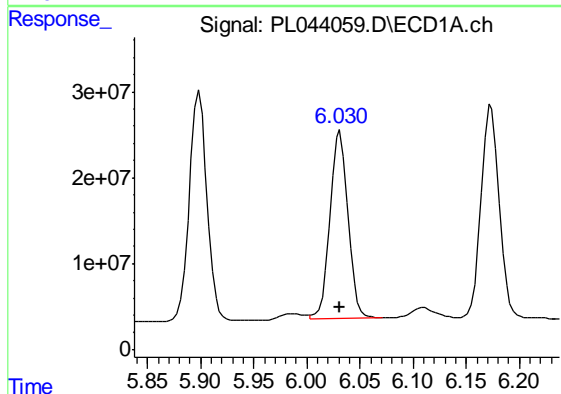
R.T.: 6.174 min
 Delta R.T.: 0.000 min
 Response: 294493638
 Conc: 50.00 ng/ml

Instrument :
 ECD_L
 ClientSampleId :
 PSTDICC050



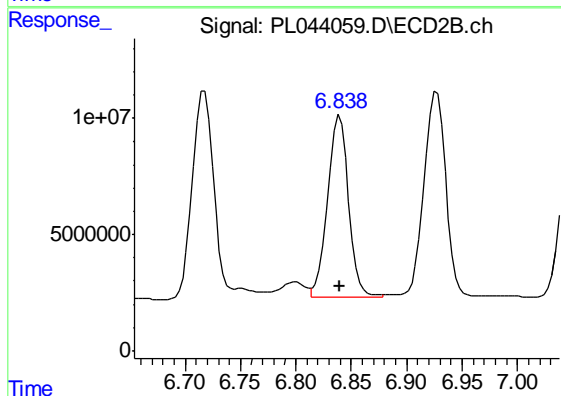
#15 Endosulfan II

R.T.: 6.927 min
 Delta R.T.: 0.000 min
 Response: 120747833
 Conc: 50.00 ng/ml



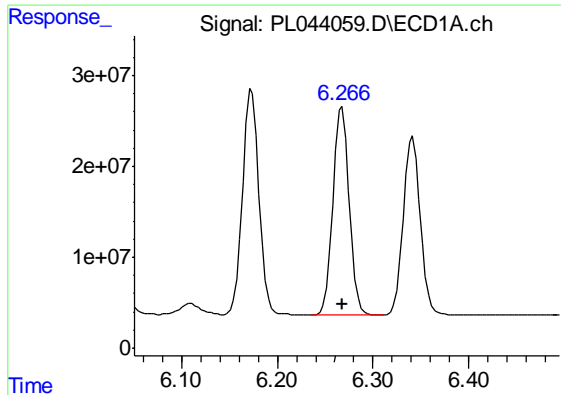
#16 4,4'-DDD

R.T.: 6.031 min
 Delta R.T.: 0.000 min
 Response: 256899384
 Conc: 50.00 ng/ml



#16 4,4'-DDD

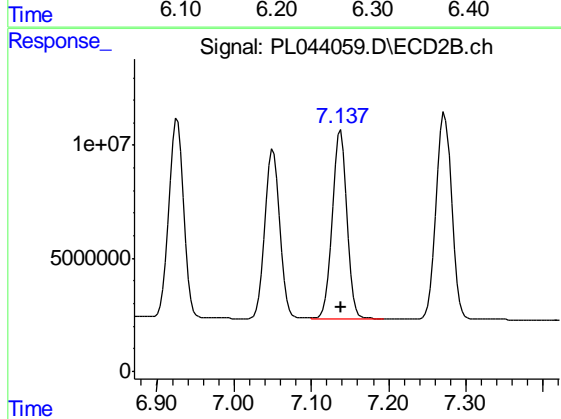
R.T.: 6.840 min
 Delta R.T.: 0.000 min
 Response: 103331393
 Conc: 50.00 ng/ml



#17 4,4'-DDT

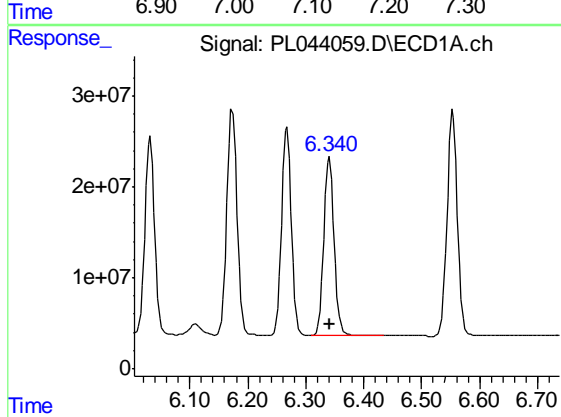
R.T.: 6.268 min
 Delta R.T.: 0.000 min
 Response: 270930230
 Conc: 50.00 ng/ml

Instrument :
 ECD_L
 ClientSampleId :
 PSTDICC050



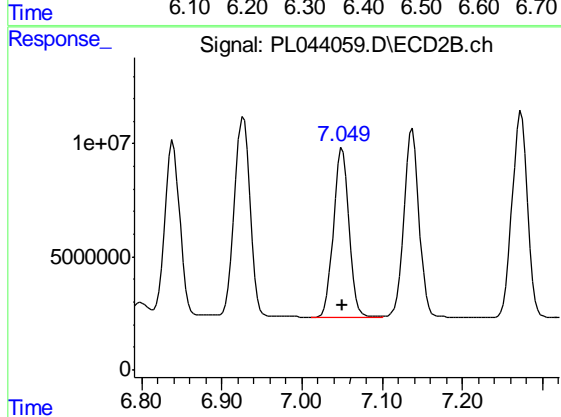
#17 4,4'-DDT

R.T.: 7.138 min
 Delta R.T.: 0.000 min
 Response: 110368811
 Conc: 50.00 ng/ml



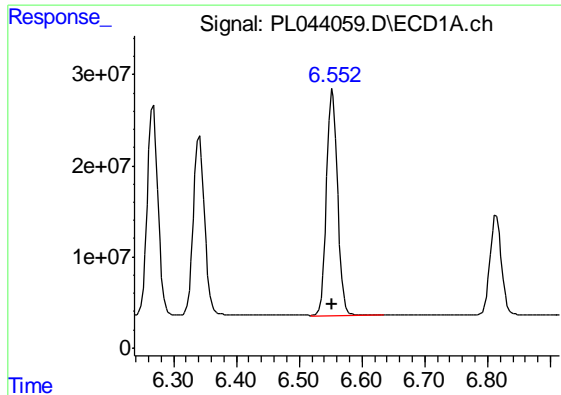
#18 Endrin aldehyde

R.T.: 6.341 min
 Delta R.T.: 0.000 min
 Response: 245206615
 Conc: 50.00 ng/ml



#18 Endrin aldehyde

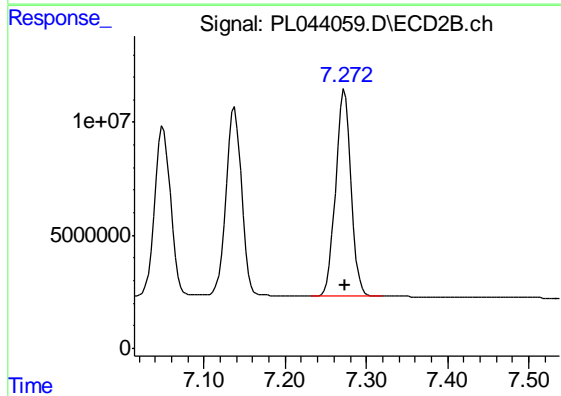
R.T.: 7.050 min
 Delta R.T.: 0.000 min
 Response: 101856688
 Conc: 50.00 ng/ml



#19 Endosulfan Sulfate

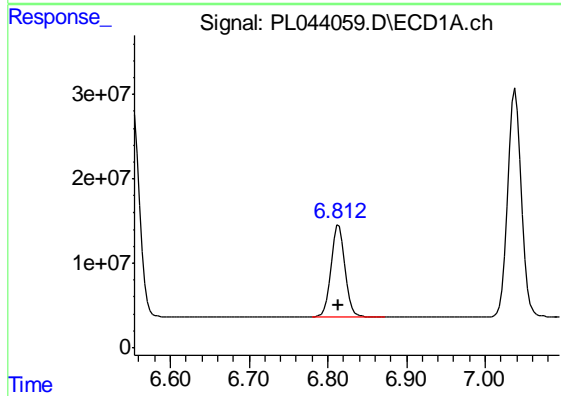
R.T.: 6.553 min
 Delta R.T.: 0.000 min
 Response: 300684568
 Conc: 50.00 ng/ml

Instrument :
 ECD_L
 ClientSampleId :
 PSTDICC050



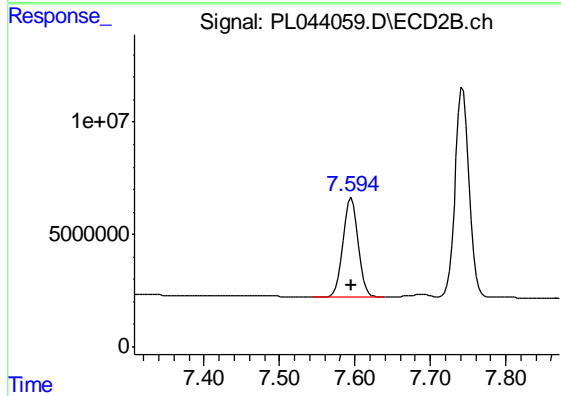
#19 Endosulfan Sulfate

R.T.: 7.273 min
 Delta R.T.: 0.000 min
 Response: 121853313
 Conc: 50.00 ng/ml



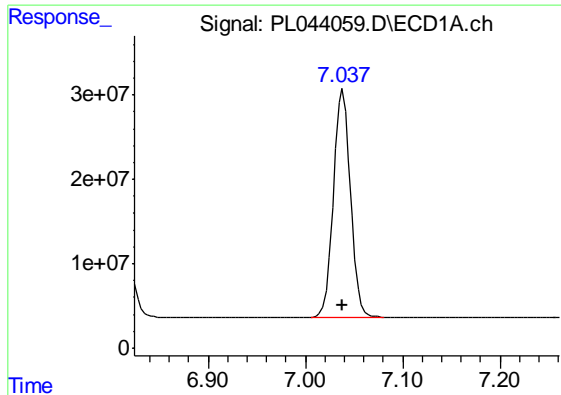
#20 Methoxychlor

R.T.: 6.814 min
 Delta R.T.: 0.000 min
 Response: 135603178
 Conc: 50.00 ng/ml



#20 Methoxychlor

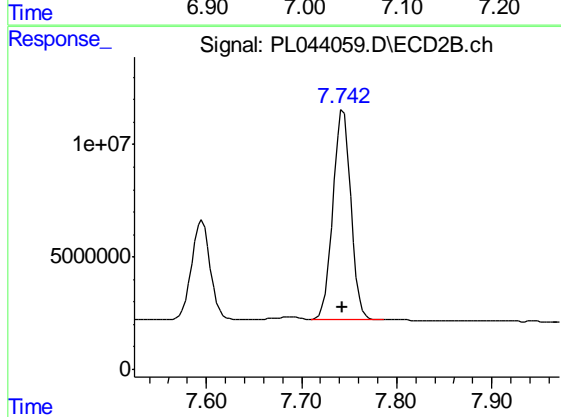
R.T.: 7.595 min
 Delta R.T.: 0.000 min
 Response: 60164999
 Conc: 50.00 ng/ml



#21 Endrin ketone

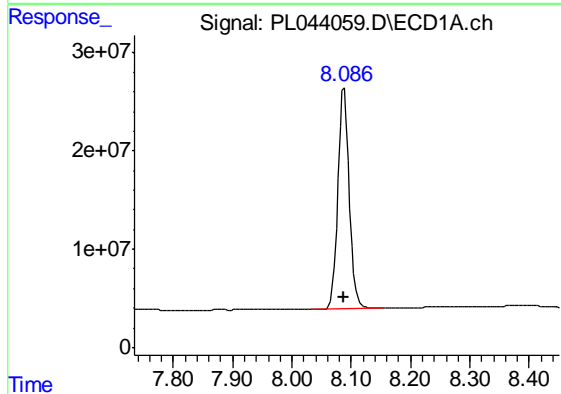
R.T.: 7.039 min
 Delta R.T.: 0.000 min
 Response: 331914651
 Conc: 50.00 ng/ml

Instrument :
 ECD_L
 ClientSampleId :
 PSTDICC050



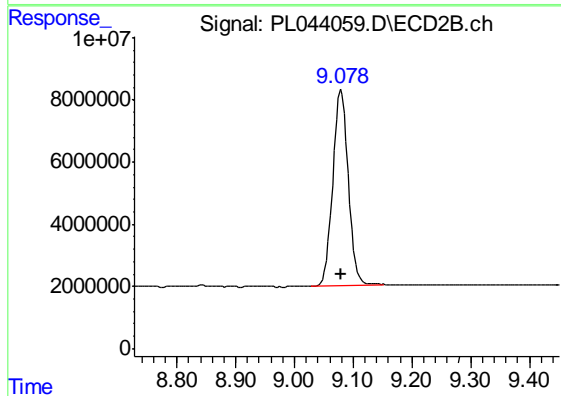
#21 Endrin ketone

R.T.: 7.744 min
 Delta R.T.: 0.000 min
 Response: 122283580
 Conc: 50.00 ng/ml



#28 Decachlorobiphenyl

R.T.: 8.088 min
 Delta R.T.: 0.000 min
 Response: 300566270
 Conc: 50.00 ng/ml



#28 Decachlorobiphenyl

R.T.: 9.080 min
 Delta R.T.: 0.000 min
 Response: 115569871
 Conc: 50.00 ng/ml