

Data Path : Z:\pestpcbsrv\HPCHEM1\ECD_L\Data\PL011819\
 Data File : PL044060.D
 Signal(s) : Signal #1: ECD1A.ch Signal #2: ECD2B.ch
 Acq On : 18 Jan 2019 13:20
 Operator : AJ\SJ
 Sample : PSTDICC025
 Misc :
 ALS Vial : 8 Sample Multiplier: 1

Instrument :
 ECD_L
 ClientSampleId :
 PSTDICC025

Integration File signal 1: autoint1.e
 Integration File signal 2: autoint2.e
 Quant Time: Jan 18 14:00:10 2019
 Quant Method : Z:\pestpcbsrv\HPCHEM1\ECD_L\methods\PL011819.M
 Quant Title : GC Extractables
 QLast Update : Fri Jan 18 13:58:48 2019
 Response via : Initial Calibration
 Integrator: ChemStation

Volume Inj. : 2 µl
 Signal #1 Phase : ZB-MR1 Signal #2 Phase: ZB-MR2
 Signal #1 Info : 30M x 0.32mm x0.5 Signal #2 Info : 30M x 0.32mm x0.25µm

Compound	RT#1	RT#2	Resp#1	Resp#2	ng/ml	ng/ml

System Monitoring Compounds						
1) SA Tetrachlo...	3.384	4.008	135.6E6	58020041	23.867	23.875
28) SA Decachlor...	8.087	9.080	148.8E6	58935895	24.749	25.498
Target Compounds						
2) A alpha-BHC	3.817	4.399	199.9E6	80280805	22.646	23.117
3) MA gamma-BHC...	4.097	4.685	177.5E6	75315573	22.628	23.514
4) MA Heptachlor	4.387	5.194	180.8E6	77195856	22.993	24.060
5) MB Aldrin	4.629	5.500	174.0E6	73148156	22.353	23.660
6) B beta-BHC	4.350	4.856	72114732	34395278	23.834	24.751
7) B delta-BHC	4.548	5.073	161.6E6	51829427	22.139	21.170
8) B Heptachlo...	5.069	5.885	160.8E6	59609709	23.048	23.244
9) A Endosulfan I	5.403	6.243	150.1E6	64602699	23.097	24.398
10) B gamma-Chl...	5.294	6.120	163.5E6	70103777	23.110	24.275
11) B alpha-Chl...	5.350	6.193	161.3E6	70089952	23.317	24.498
12) B 4,4'-DDE	5.518	6.350	140.3E6	58261792	22.170	23.427
13) MA Dieldrin	5.644	6.500	155.0E6	65864669	22.366	23.812
14) MA Endrin	5.898	6.718	140.0E6	58004884	22.621	23.199
15) B Endosulfa...	6.173	6.927	137.2E6	60024573	23.301	24.855
16) A 4,4'-DDD	6.031	6.840	111.4E6	49419559	21.676	23.913
17) MA 4,4'-DDT	6.268	7.138	119.7E6	53091637	22.085	24.052
18) B Endrin al...	6.341	7.051	114.5E6	50289210	23.338	24.686
19) B Endosulfa...	6.553	7.273	139.4E6	60140951	23.185	24.678
20) A Methoxychlor	6.814	7.596	64447032	30040872	23.763	24.965
21) B Endrin ke...	7.039	7.743	152.3E6	59160244	22.949	24.190

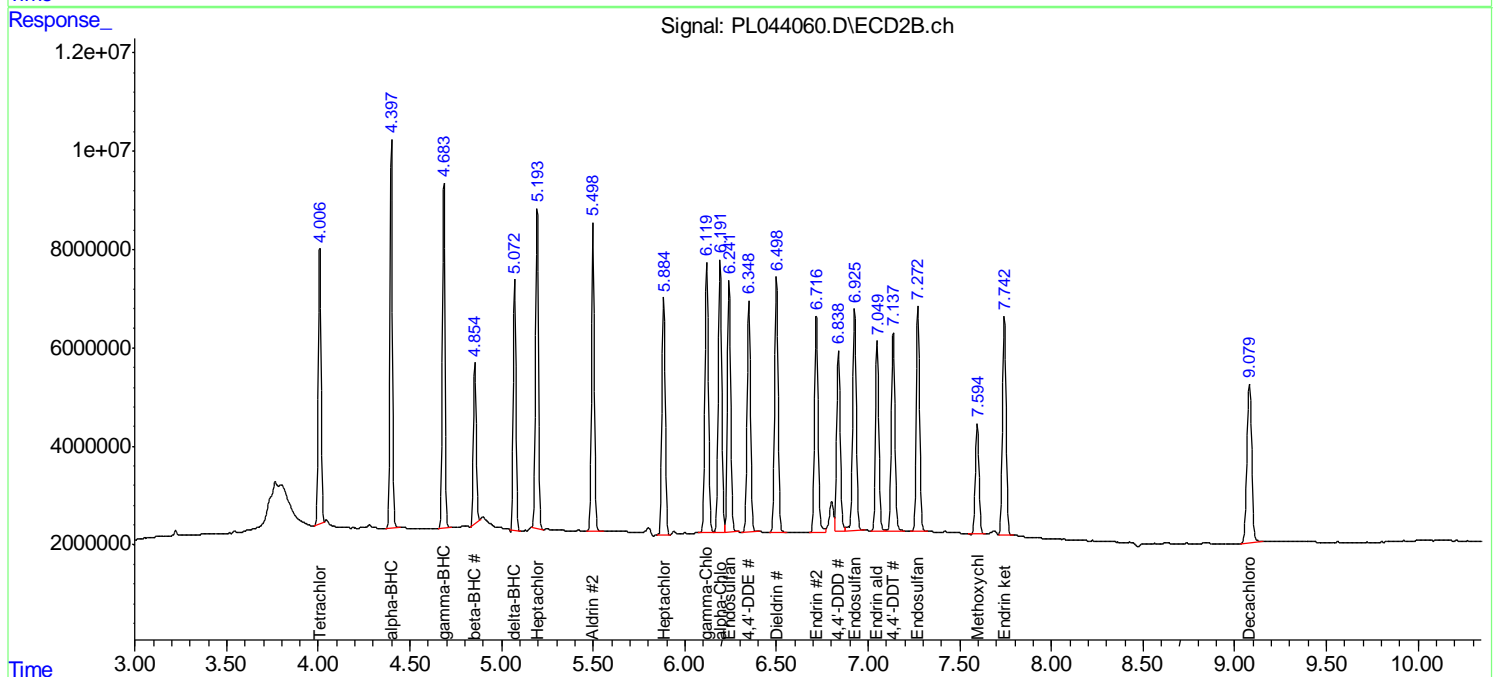
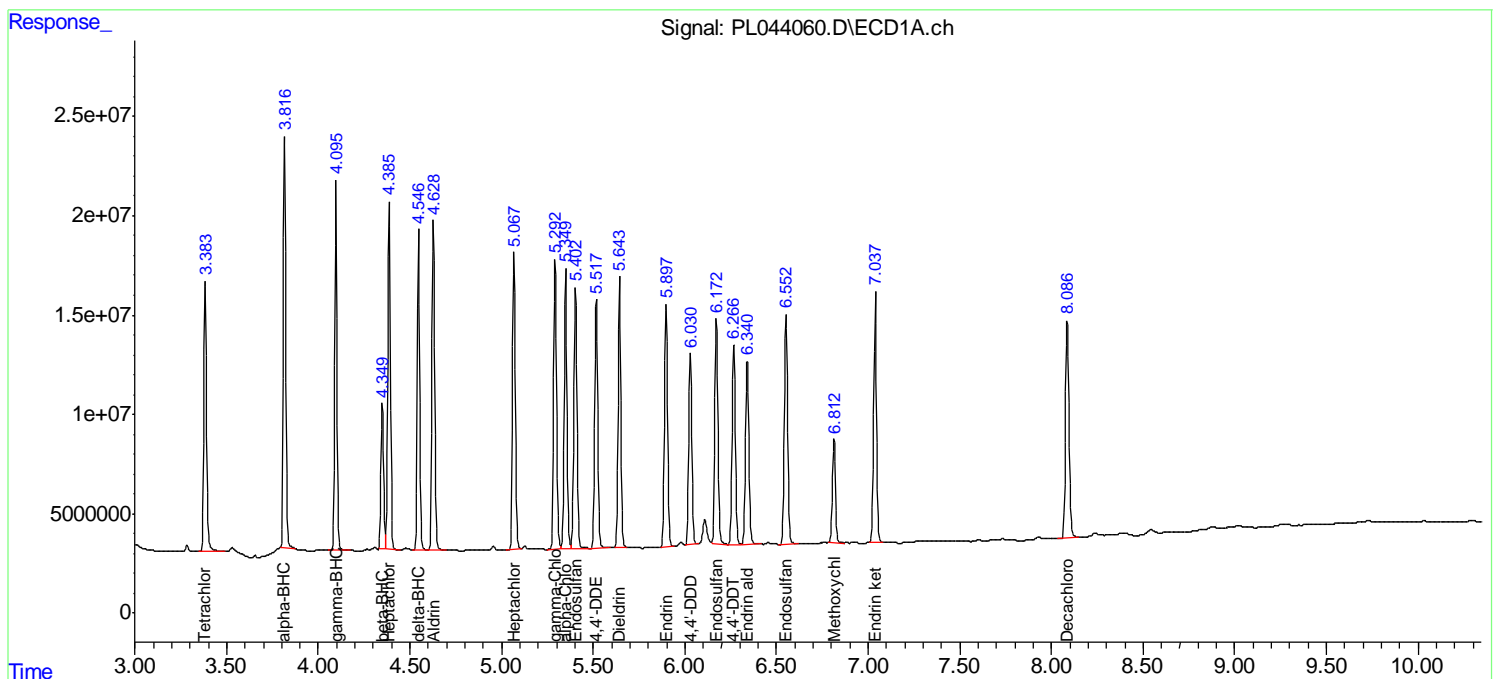
(f)=RT Delta > 1/2 Window (#)=Amounts differ by > 25% (m)=manual int.

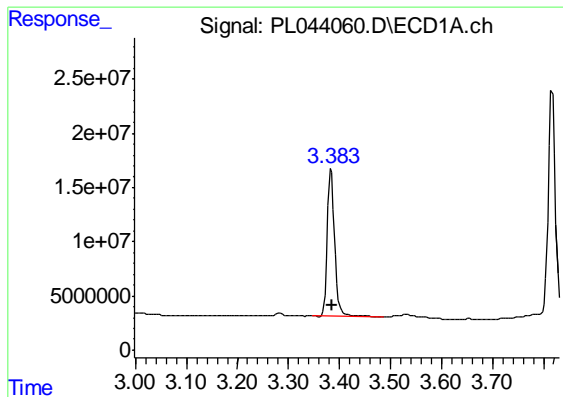
Data Path : Z:\pestpcbsrv\HPCHEM1\ECD_L\Data\PL011819\
 Data File : PL044060.D
 Signal(s) : Signal #1: ECD1A.ch Signal #2: ECD2B.ch
 Acq On : 18 Jan 2019 13:20
 Operator : AJ\SJ
 Sample : PSTDICC025
 Misc :
 ALS Vial : 8 Sample Multiplier: 1

Instrument :
 ECD_L
 ClientSampled :
 PSTDICC025

Integration File signal 1: autoint1.e
 Integration File signal 2: autoint2.e
 Quant Time: Jan 18 14:00:10 2019
 Quant Method : Z:\pestpcbsrv\HPCHEM1\ECD_L\methods\PL011819.M
 Quant Title : GC Extractables
 QLast Update : Fri Jan 18 13:58:48 2019
 Response via : Initial Calibration
 Integrator: ChemStation

Volume Inj. : 2 µl
 Signal #1 Phase : ZB-MR1 Signal #2 Phase: ZB-MR2
 Signal #1 Info : 30M x 0.32mm x0.5 Signal #2 Info : 30M x 0.32mm x0.25µm

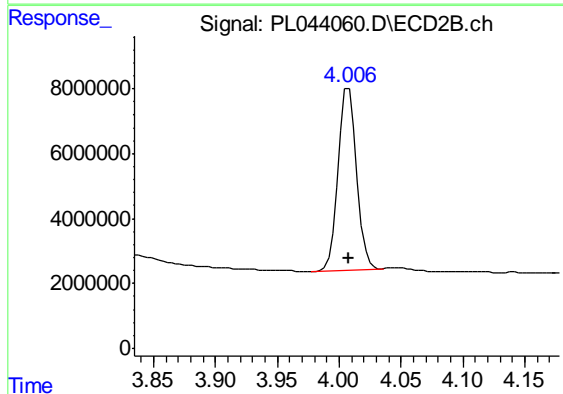




#1 Tetrachloro-m-xylene

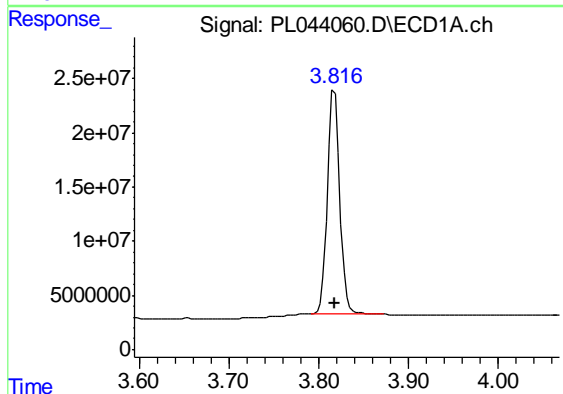
R.T.: 3.384 min
 Delta R.T.: 0.000 min
 Response: 135647380
 Conc: 23.87 ng/ml

Instrument :
 ECD_L
 ClientSampleId :
 PSTDICC025



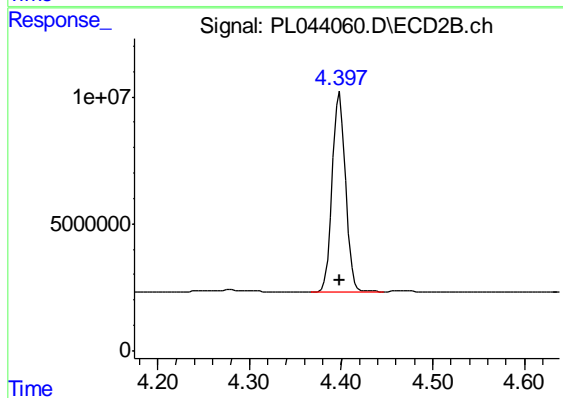
#1 Tetrachloro-m-xylene

R.T.: 4.008 min
 Delta R.T.: 0.000 min
 Response: 58020041
 Conc: 23.87 ng/ml



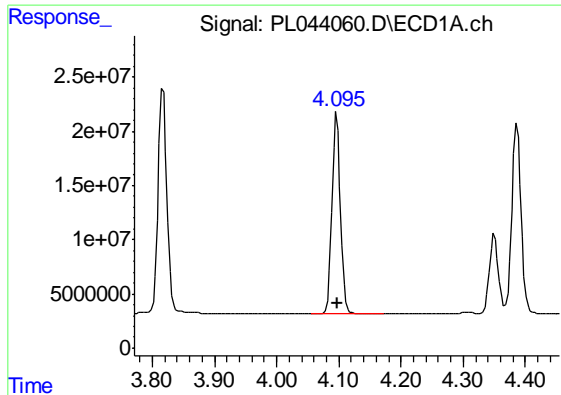
#2 alpha-BHC

R.T.: 3.817 min
 Delta R.T.: 0.000 min
 Response: 199867559
 Conc: 22.65 ng/ml



#2 alpha-BHC

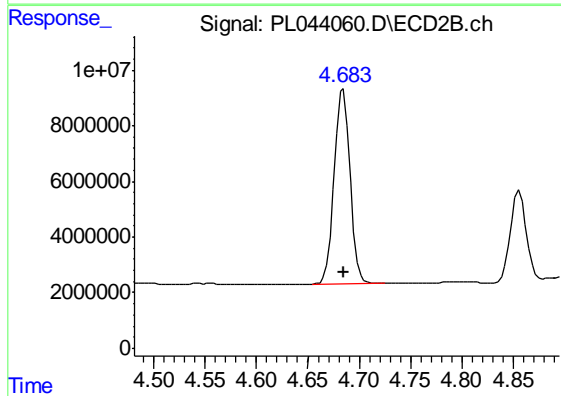
R.T.: 4.399 min
 Delta R.T.: 0.000 min
 Response: 80280805
 Conc: 23.12 ng/ml



#3 gamma-BHC (Lindane)

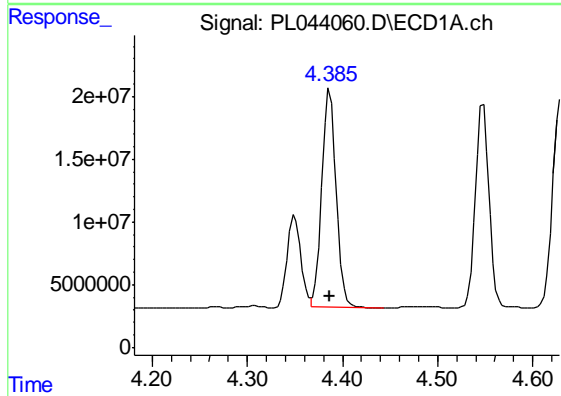
R.T.: 4.097 min
 Delta R.T.: 0.000 min
 Response: 177498904
 Conc: 22.63 ng/ml

Instrument :
 ECD_L
 ClientSampleId :
 PSTDICC025



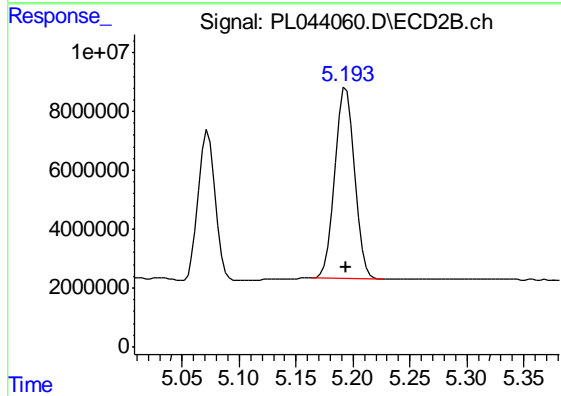
#3 gamma-BHC (Lindane)

R.T.: 4.685 min
 Delta R.T.: 0.000 min
 Response: 75315573
 Conc: 23.51 ng/ml



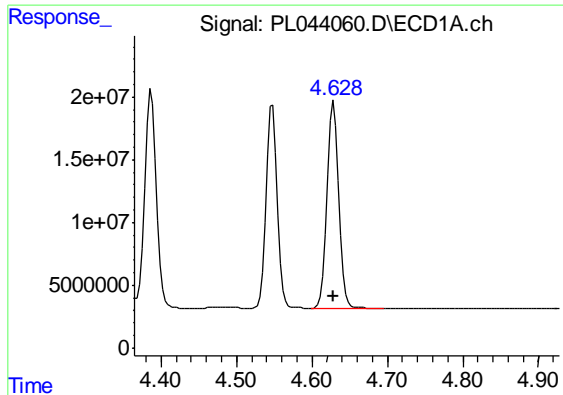
#4 Heptachlor

R.T.: 4.387 min
 Delta R.T.: 0.000 min
 Response: 180834127
 Conc: 22.99 ng/ml



#4 Heptachlor

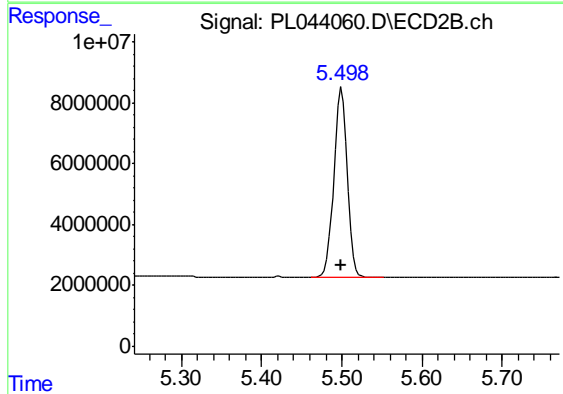
R.T.: 5.194 min
 Delta R.T.: 0.000 min
 Response: 77195856
 Conc: 24.06 ng/ml



#5 Aldrin

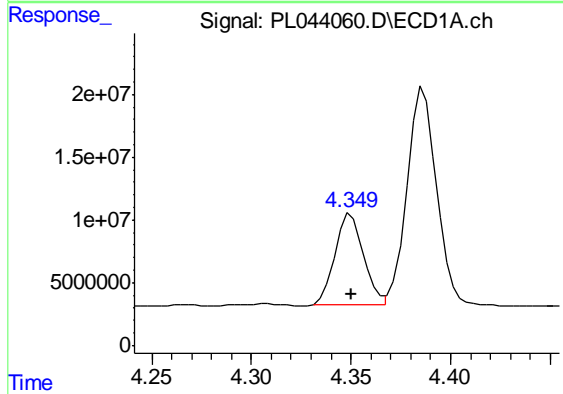
R.T.: 4.629 min
 Delta R.T.: 0.000 min
 Response: 173972535
 Conc: 22.35 ng/ml

Instrument :
 ECD_L
 ClientSampleId :
 PSTDICC025



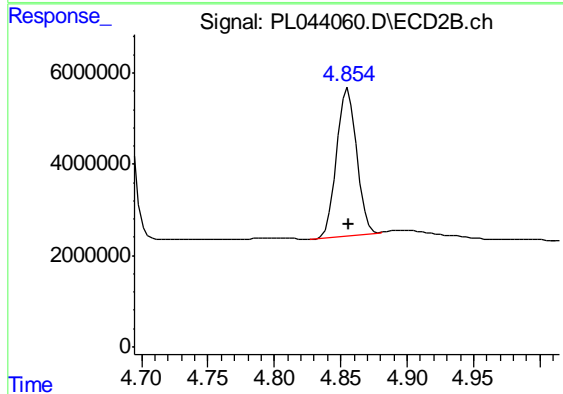
#5 Aldrin

R.T.: 5.500 min
 Delta R.T.: 0.000 min
 Response: 73148156
 Conc: 23.66 ng/ml



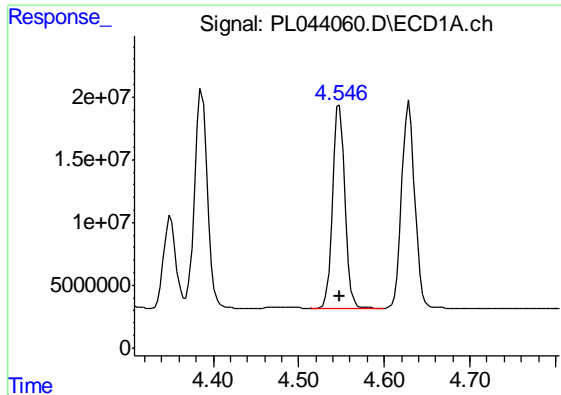
#6 beta-BHC

R.T.: 4.350 min
 Delta R.T.: 0.000 min
 Response: 72114732
 Conc: 23.83 ng/ml



#6 beta-BHC

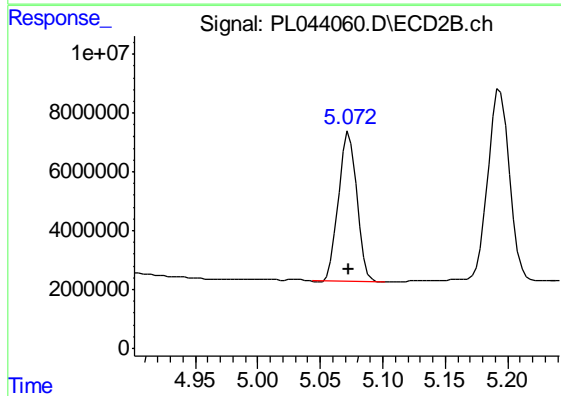
R.T.: 4.856 min
 Delta R.T.: 0.000 min
 Response: 34395278
 Conc: 24.75 ng/ml



#7 delta-BHC

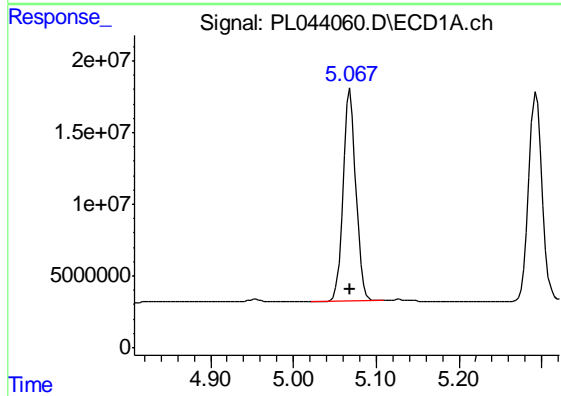
R.T.: 4.548 min
 Delta R.T.: 0.000 min
 Response: 161589762
 Conc: 22.14 ng/ml

Instrument :
 ECD_L
 ClientSampleId :
 PSTDICC025



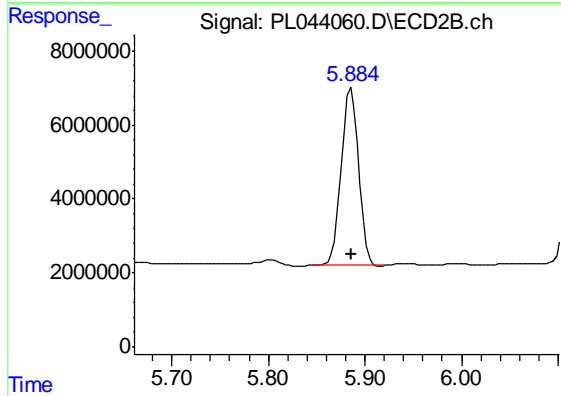
#7 delta-BHC

R.T.: 5.073 min
 Delta R.T.: 0.000 min
 Response: 51829427
 Conc: 21.17 ng/ml



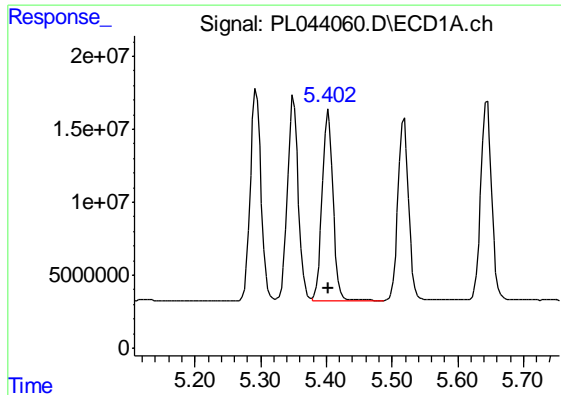
#8 Heptachlor epoxide

R.T.: 5.069 min
 Delta R.T.: 0.000 min
 Response: 160817059
 Conc: 23.05 ng/ml



#8 Heptachlor epoxide

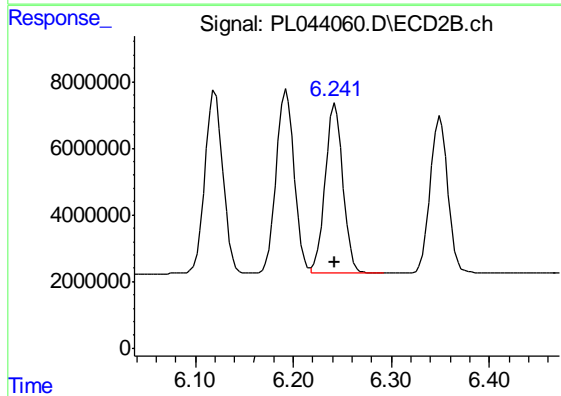
R.T.: 5.885 min
 Delta R.T.: 0.000 min
 Response: 59609709
 Conc: 23.24 ng/ml



#9 Endosulfan I

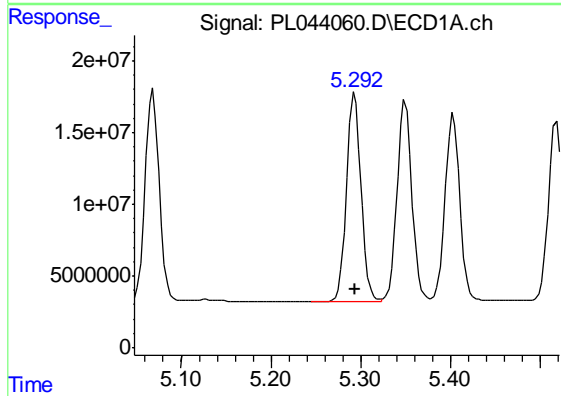
R.T.: 5.403 min
 Delta R.T.: 0.000 min
 Response: 150135180
 Conc: 23.10 ng/ml

Instrument :
 ECD_L
 ClientSampleId :
 PSTDICC025



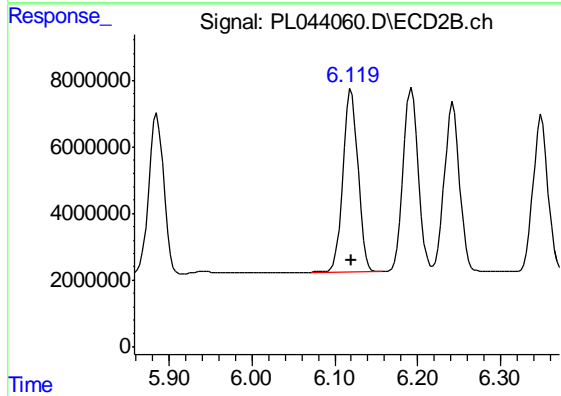
#9 Endosulfan I

R.T.: 6.243 min
 Delta R.T.: 0.000 min
 Response: 64602699
 Conc: 24.40 ng/ml



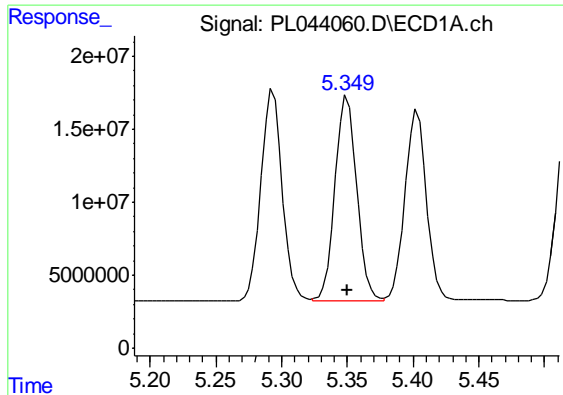
#10 gamma-Chlordane

R.T.: 5.294 min
 Delta R.T.: 0.000 min
 Response: 163475614
 Conc: 23.11 ng/ml



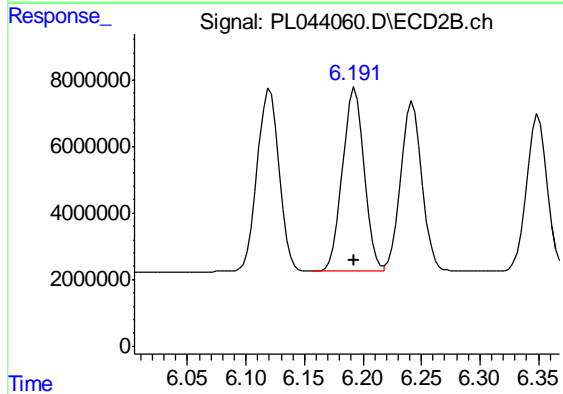
#10 gamma-Chlordane

R.T.: 6.120 min
 Delta R.T.: 0.000 min
 Response: 70103777
 Conc: 24.27 ng/ml

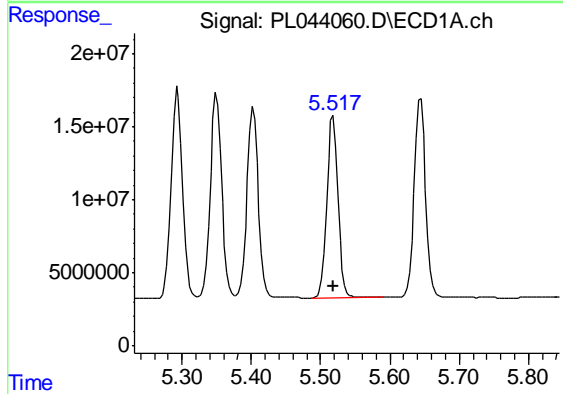


#11 alpha-Chlordane
 R.T.: 5.350 min
 Delta R.T.: 0.000 min
 Response: 161307058
 Conc: 23.32 ng/ml

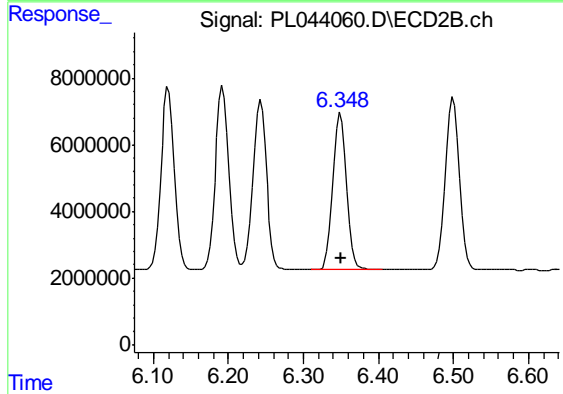
Instrument :
 ECD_L
 ClientSampleId :
 PSTDICC025



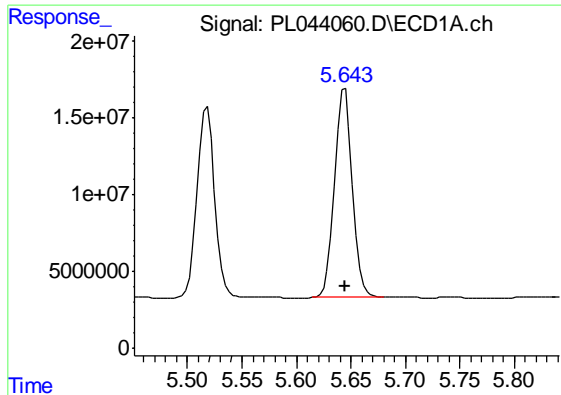
#11 alpha-Chlordane
 R.T.: 6.193 min
 Delta R.T.: 0.000 min
 Response: 70089952
 Conc: 24.50 ng/ml



#12 4,4'-DDE
 R.T.: 5.518 min
 Delta R.T.: 0.000 min
 Response: 140284355
 Conc: 22.17 ng/ml

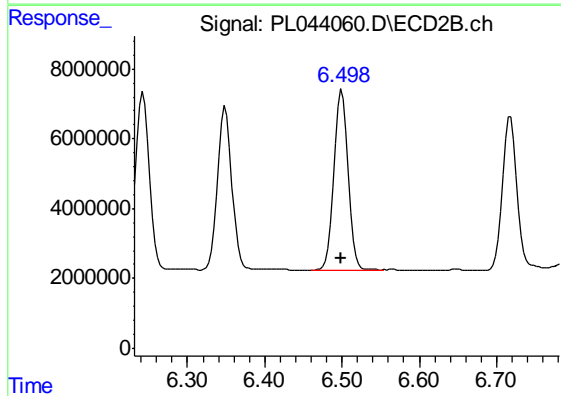


#12 4,4'-DDE
 R.T.: 6.350 min
 Delta R.T.: 0.000 min
 Response: 58261792
 Conc: 23.43 ng/ml

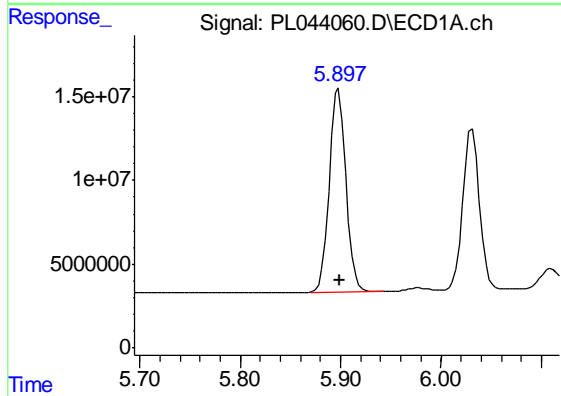


#13 Dieldrin
 R.T.: 5.644 min
 Delta R.T.: 0.000 min
 Response: 155039978
 Conc: 22.37 ng/ml

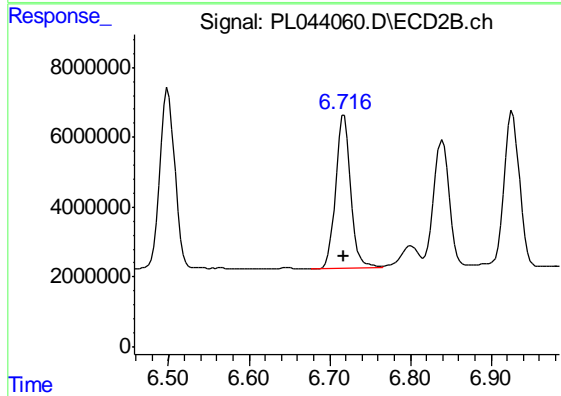
Instrument :
 ECD_L
 ClientSampled :
 PSTDICC025



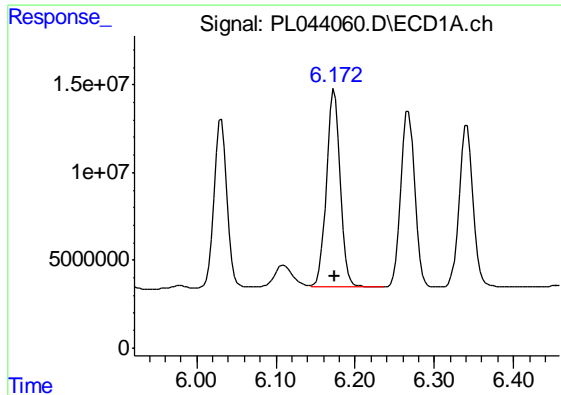
#13 Dieldrin
 R.T.: 6.500 min
 Delta R.T.: 0.000 min
 Response: 65864669
 Conc: 23.81 ng/ml



#14 Endrin
 R.T.: 5.898 min
 Delta R.T.: 0.000 min
 Response: 140005428
 Conc: 22.62 ng/ml



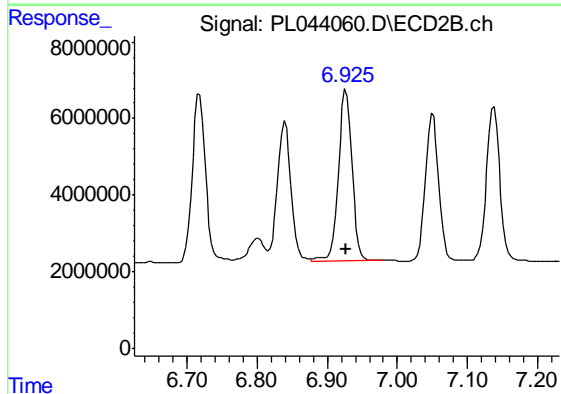
#14 Endrin
 R.T.: 6.718 min
 Delta R.T.: 0.000 min
 Response: 58004884
 Conc: 23.20 ng/ml



#15 Endosulfan II

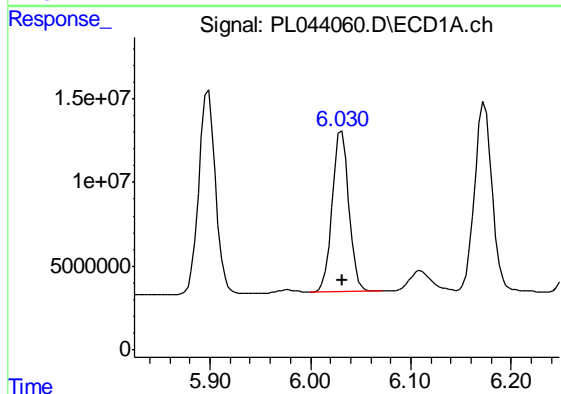
R.T.: 6.173 min
 Delta R.T.: 0.000 min
 Response: 137240478
 Conc: 23.30 ng/ml

Instrument :
 ECD_L
 ClientSampleId :
 PSTDICC025



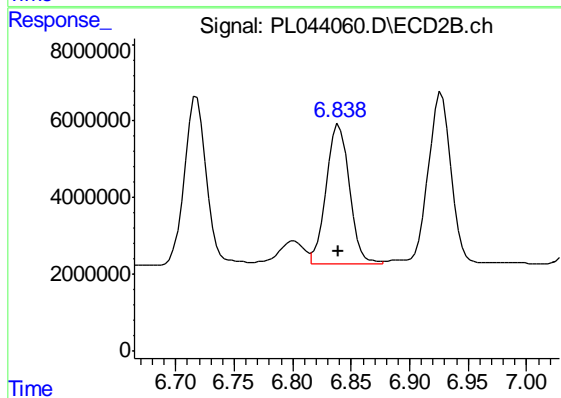
#15 Endosulfan II

R.T.: 6.927 min
 Delta R.T.: 0.000 min
 Response: 60024573
 Conc: 24.86 ng/ml



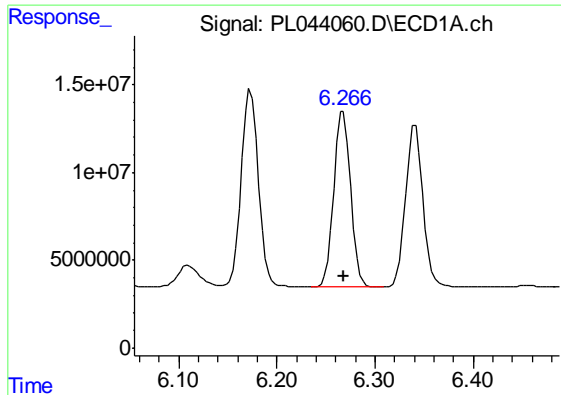
#16 4,4'-DDD

R.T.: 6.031 min
 Delta R.T.: 0.000 min
 Response: 111372943
 Conc: 21.68 ng/ml



#16 4,4'-DDD

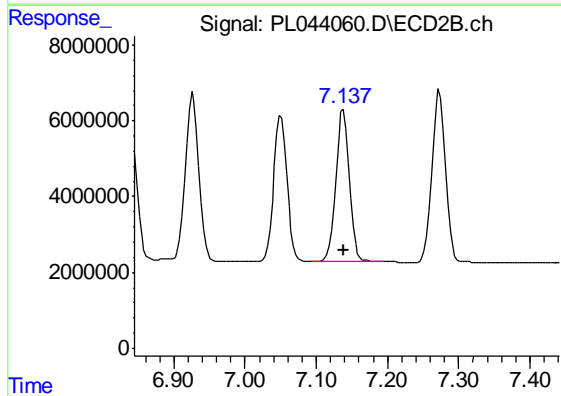
R.T.: 6.840 min
 Delta R.T.: 0.000 min
 Response: 49419559
 Conc: 23.91 ng/ml



#17 4,4'-DDT

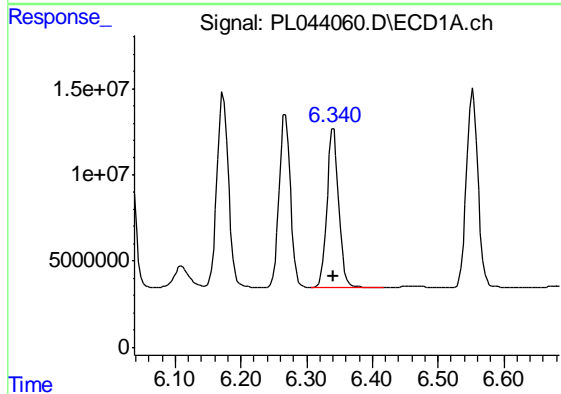
R.T.: 6.268 min
 Delta R.T.: 0.000 min
 Response: 119671743
 Conc: 22.09 ng/ml

Instrument :
 ECD_L
 ClientSampleId :
 PSTDICC025



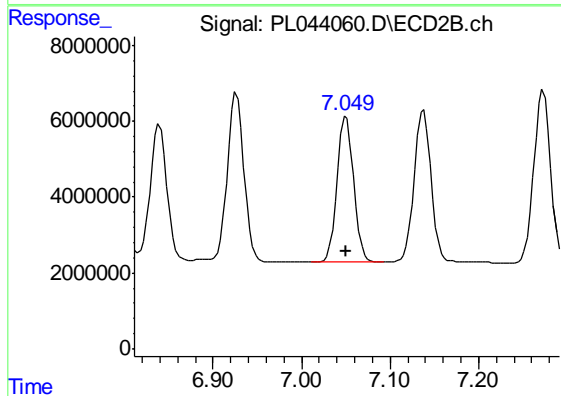
#17 4,4'-DDT

R.T.: 7.138 min
 Delta R.T.: 0.000 min
 Response: 53091637
 Conc: 24.05 ng/ml



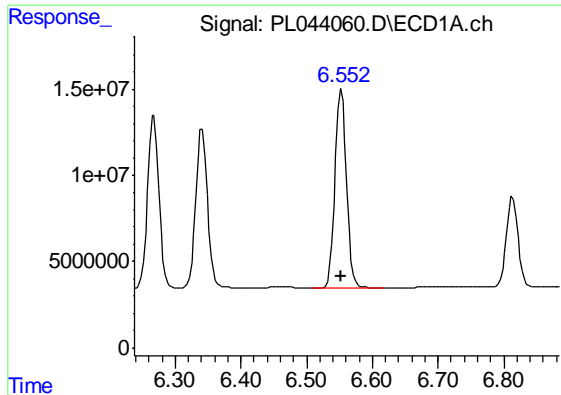
#18 Endrin aldehyde

R.T.: 6.341 min
 Delta R.T.: 0.000 min
 Response: 114452838
 Conc: 23.34 ng/ml



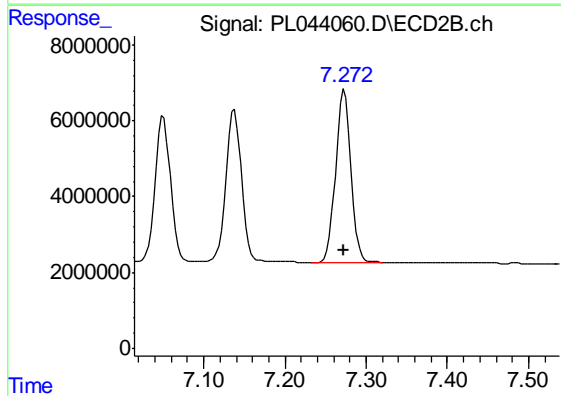
#18 Endrin aldehyde

R.T.: 7.051 min
 Delta R.T.: 0.000 min
 Response: 50289210
 Conc: 24.69 ng/ml

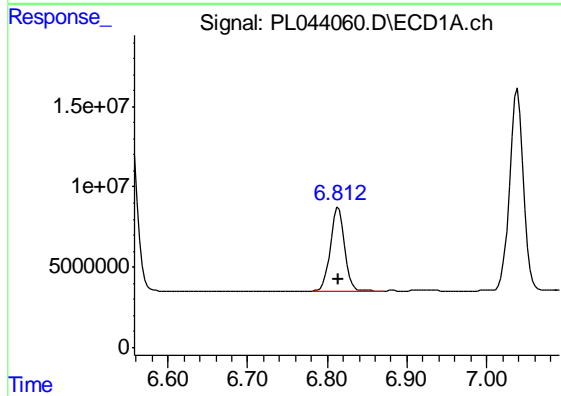


#19 Endosulfan Sulfate
 R.T.: 6.553 min
 Delta R.T.: 0.000 min
 Response: 139425389
 Conc: 23.18 ng/ml

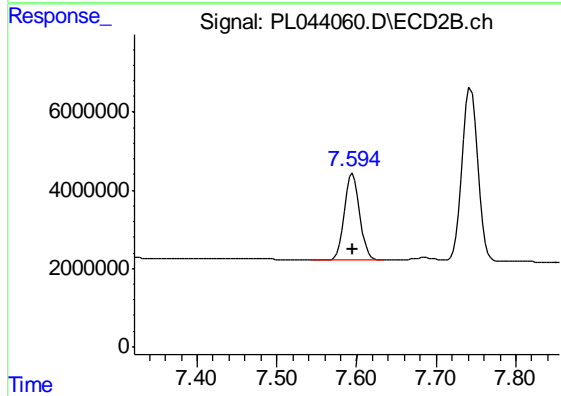
Instrument :
 ECD_L
 ClientSampleId :
 PSTDICC025



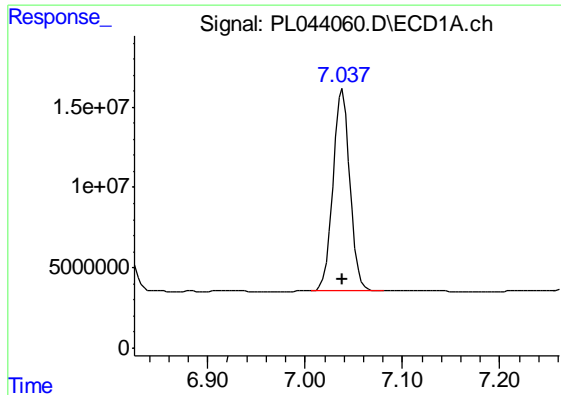
#19 Endosulfan Sulfate
 R.T.: 7.273 min
 Delta R.T.: 0.000 min
 Response: 60140951
 Conc: 24.68 ng/ml



#20 Methoxychlor
 R.T.: 6.814 min
 Delta R.T.: 0.000 min
 Response: 64447032
 Conc: 23.76 ng/ml



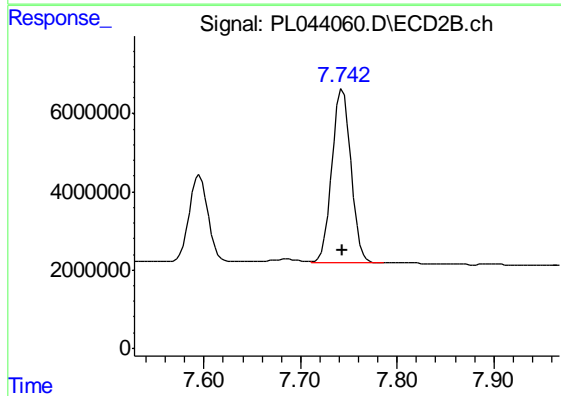
#20 Methoxychlor
 R.T.: 7.596 min
 Delta R.T.: 0.000 min
 Response: 30040872
 Conc: 24.97 ng/ml



#21 Endrin ketone

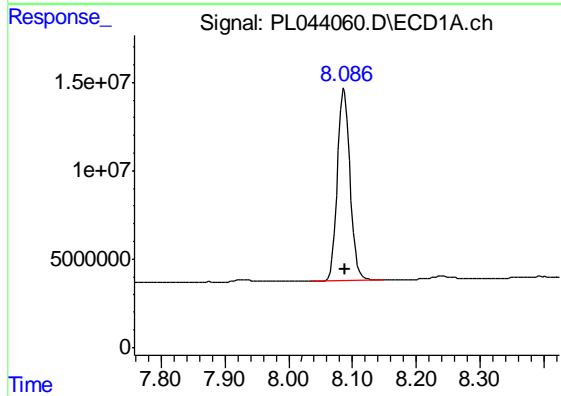
R.T.: 7.039 min
Delta R.T.: 0.000 min
Response: 152342861
Conc: 22.95 ng/ml

Instrument :
ECD_L
ClientSampleId :
PSTDICC025



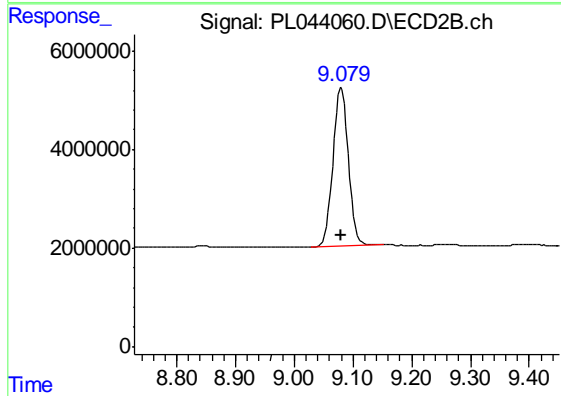
#21 Endrin ketone

R.T.: 7.743 min
Delta R.T.: 0.000 min
Response: 59160244
Conc: 24.19 ng/ml



#28 Decachlorobiphenyl

R.T.: 8.087 min
Delta R.T.: 0.000 min
Response: 148777213
Conc: 24.75 ng/ml



#28 Decachlorobiphenyl

R.T.: 9.080 min
Delta R.T.: 0.000 min
Response: 58935895
Conc: 25.50 ng/ml