

Data Path : Z:\pestpcbsrv\HPCHEM1\ECD_L\Data\PL011819\
 Data File : PL044062.D
 Signal(s) : Signal #1: ECD1A.ch Signal #2: ECD2B.ch
 Acq On : 18 Jan 2019 13:48
 Operator : AJ\SJ
 Sample : PCHLORICC500
 Misc :
 ALS Vial : 10 Sample Multiplier: 1

Instrument :
 ECD_L
 ClientSampleId :
 PCHLORICC500

Integration File signal 1: autoint1.e
 Integration File signal 2: autoint2.e
 Quant Time: Jan 19 02:49:18 2019
 Quant Method : Z:\pestpcbsrv\HPCHEM1\ECD_L\methods\PL011819.M
 Quant Title : GC Extractables
 QLast Update : Sat Jan 19 02:48:54 2019
 Response via : Initial Calibration
 Integrator: ChemStation

Volume Inj. : 2 µl
 Signal #1 Phase : ZB-MR1 Signal #2 Phase: ZB-MR2
 Signal #1 Info : 30M x 0.32mm x0.5 Signal #2 Info : 30M x 0.32mm x0.25µm

	Compound	RT#1	RT#2	Resp#1	Resp#2	ng/ml	ng/ml

System Monitoring Compounds							
1)	SA Tetrachlo...	3.384	4.008	305.8E6	119.5E6	50.000	50.000
28)	SA Decachlor...	8.087	9.080	300.3E6	111.4E6	50.000	50.000
Target Compounds							
23)	Chlordane-1	4.238	5.005	115.9E6	58297140	500.000	500.000
24)	Chlordane-2	4.733	5.474	128.1E6	59047652	500.000	500.000
25)	Chlordane-3	5.294	6.120	409.5E6	198.2E6	500.000	500.000
26)	Chlordane-4	5.350	6.194	365.5E6	238.8E6	500.000	500.000
27)	Chlordane-5	6.179	6.998	112.3E6	45332855	500.000	500.000

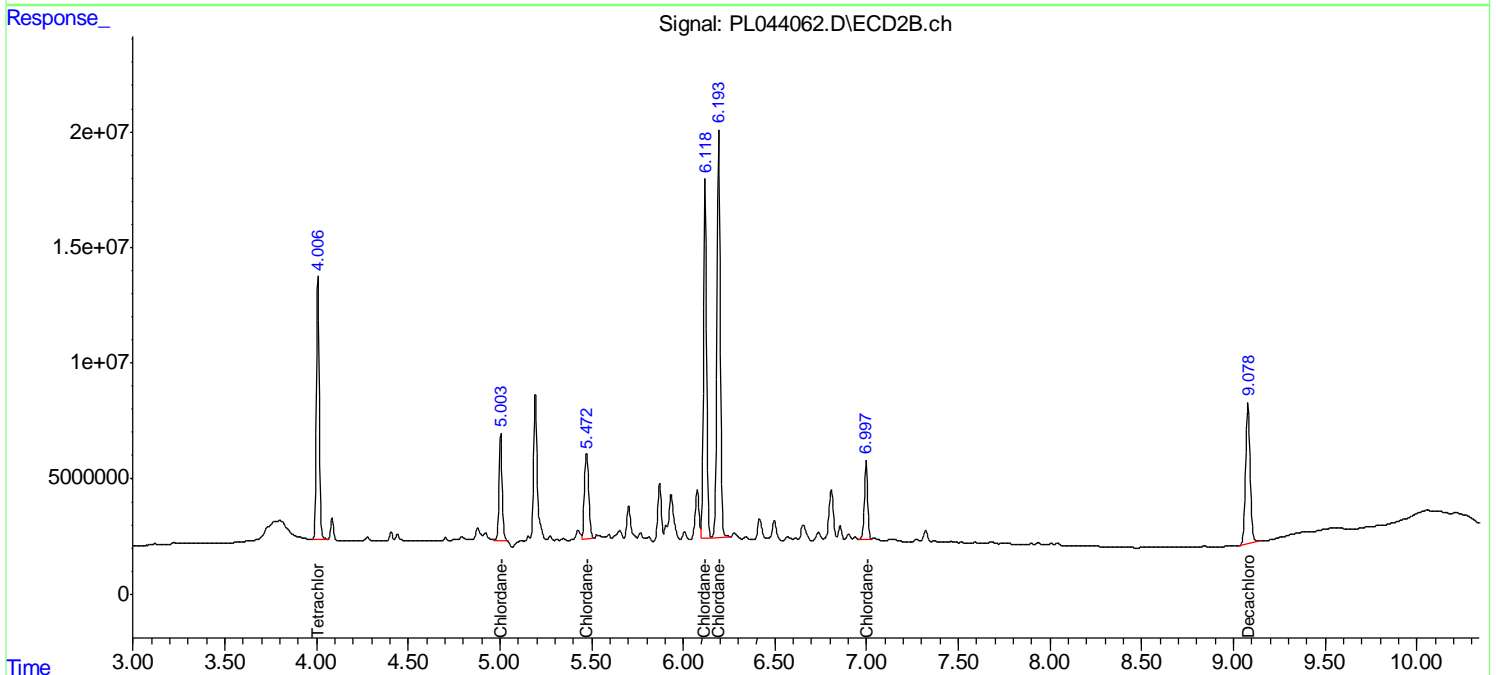
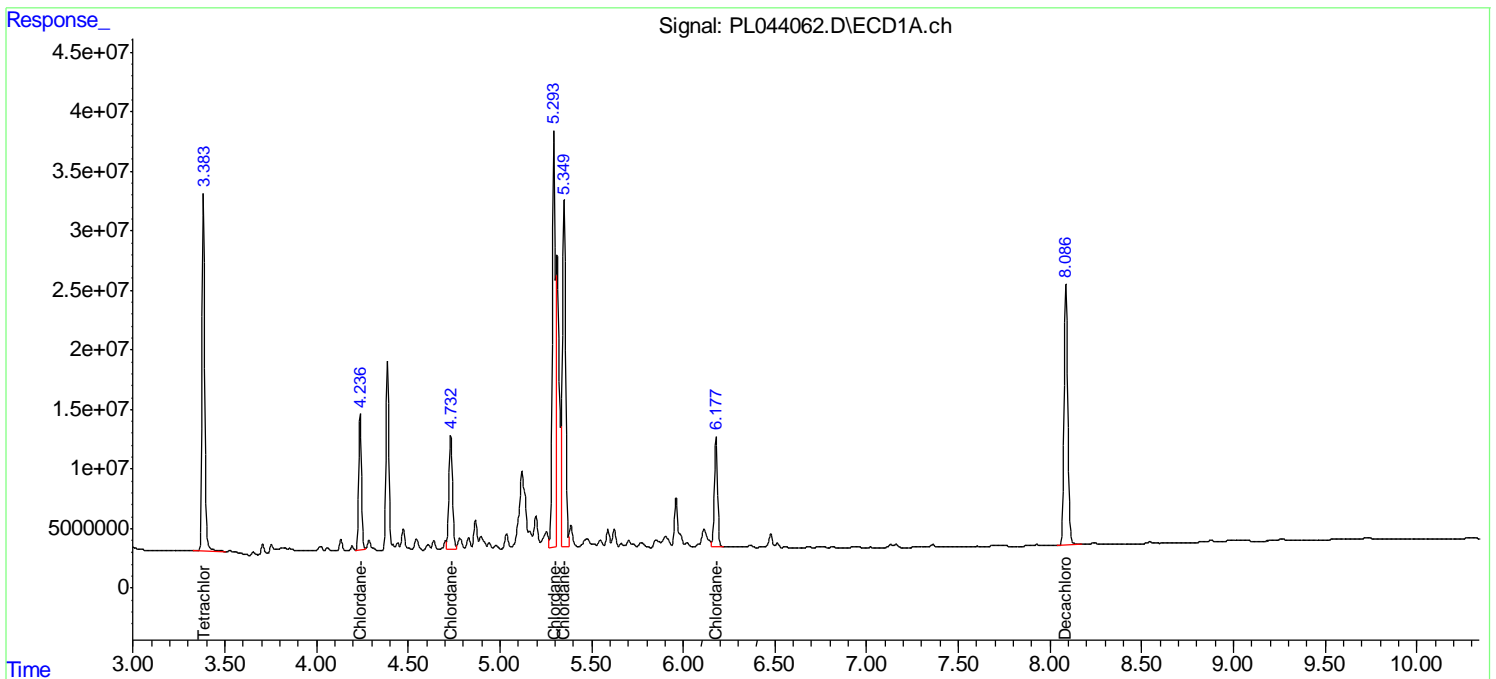
(f)=RT Delta > 1/2 Window (#)=Amounts differ by > 25% (m)=manual int.

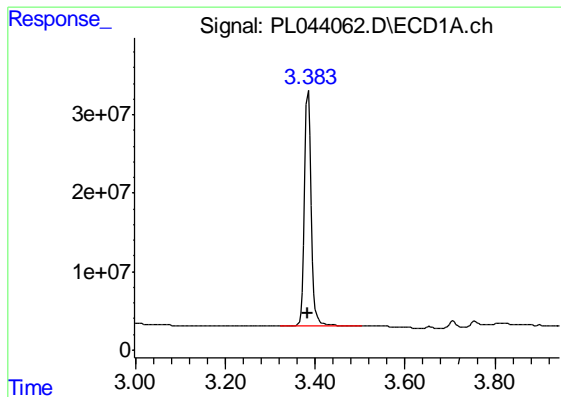
Data Path : Z:\pestpcbsrv\HPCHEM1\ECD_L\Data\PL011819\
 Data File : PL044062.D
 Signal(s) : Signal #1: ECD1A.ch Signal #2: ECD2B.ch
 Acq On : 18 Jan 2019 13:48
 Operator : AJ\SJ
 Sample : PCHLORICC500
 Misc :
 ALS Vial : 10 Sample Multiplier: 1

Instrument :
 ECD_L
 ClientSampleId :
 PCHLORICC500

Integration File signal 1: autoint1.e
 Integration File signal 2: autoint2.e
 Quant Time: Jan 19 02:49:18 2019
 Quant Method : Z:\pestpcbsrv\HPCHEM1\ECD_L\methods\PL011819.M
 Quant Title : GC Extractables
 QLast Update : Sat Jan 19 02:48:54 2019
 Response via : Initial Calibration
 Integrator: ChemStation

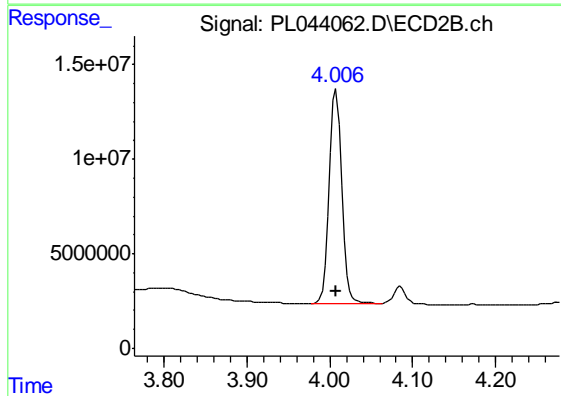
Volume Inj. : 2 µl
 Signal #1 Phase : ZB-MR1 Signal #2 Phase: ZB-MR2
 Signal #1 Info : 30M x 0.32mm x0.5 Signal #2 Info : 30M x 0.32mm x0.25µm



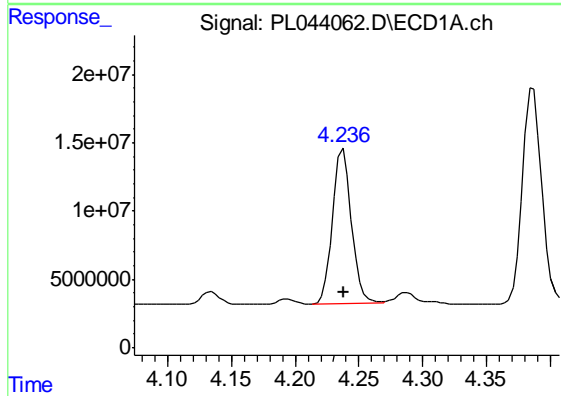


#1 Tetrachloro-m-xylene
 R.T.: 3.384 min
 Delta R.T.: 0.000 min
 Response: 305763197
 Conc: 50.00 ng/ml

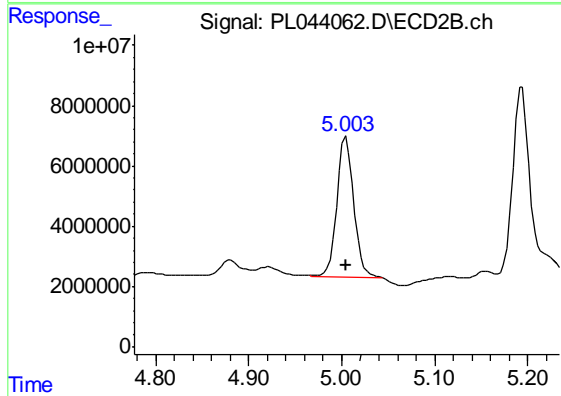
Instrument :
 ECD_L
 ClientSampleId :
 PCHLORICC500



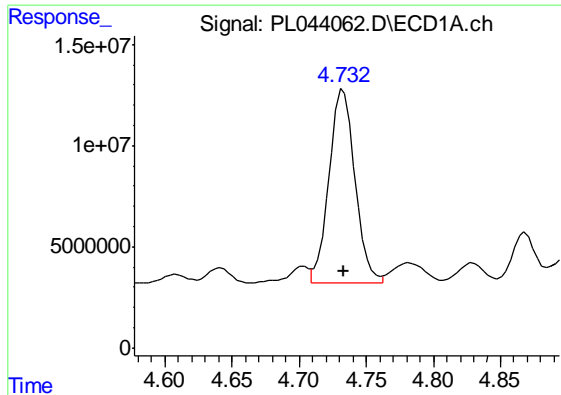
#1 Tetrachloro-m-xylene
 R.T.: 4.008 min
 Delta R.T.: 0.000 min
 Response: 119540540
 Conc: 50.00 ng/ml



#23 Chlordane-1
 R.T.: 4.238 min
 Delta R.T.: 0.000 min
 Response: 115908865
 Conc: 500.00 ng/ml



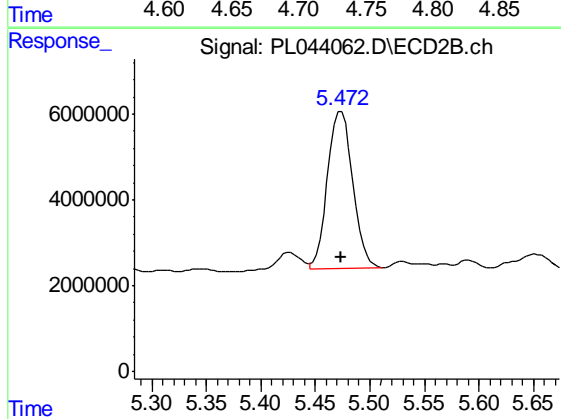
#23 Chlordane-1
 R.T.: 5.005 min
 Delta R.T.: 0.000 min
 Response: 58297140
 Conc: 500.00 ng/ml



#24 Chlordane-2

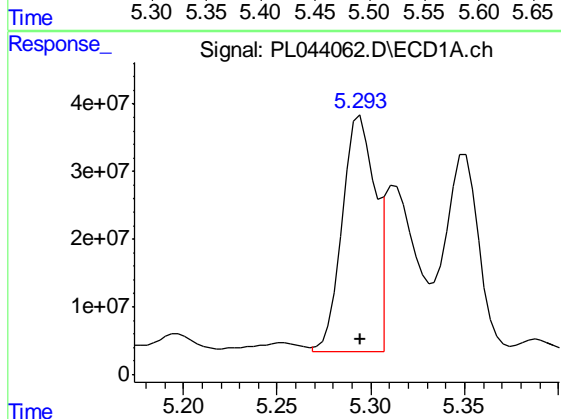
R.T.: 4.733 min
 Delta R.T.: 0.000 min
 Response: 128100293
 Conc: 500.00 ng/ml

Instrument :
 ECD_L
 ClientSampleId :
 PCHLORICC500



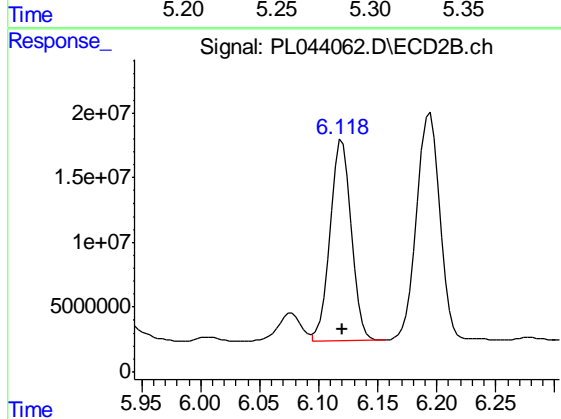
#24 Chlordane-2

R.T.: 5.474 min
 Delta R.T.: 0.000 min
 Response: 59047652
 Conc: 500.00 ng/ml



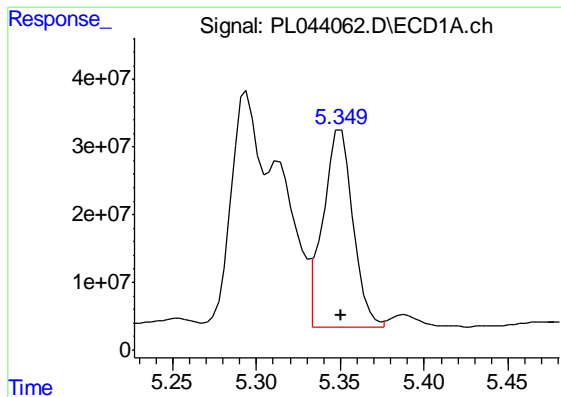
#25 Chlordane-3

R.T.: 5.294 min
 Delta R.T.: 0.000 min
 Response: 409466993
 Conc: 500.00 ng/ml



#25 Chlordane-3

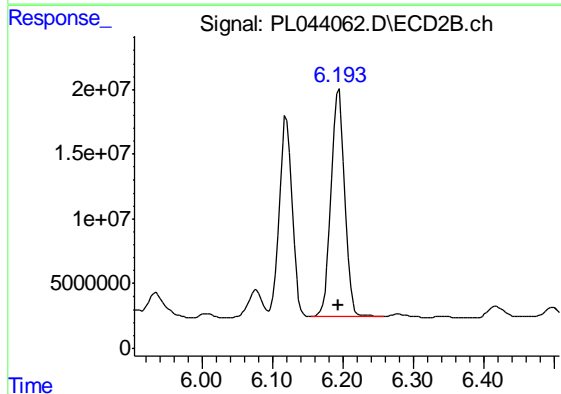
R.T.: 6.120 min
 Delta R.T.: 0.000 min
 Response: 198153743
 Conc: 500.00 ng/ml



#26 Chlordane-4

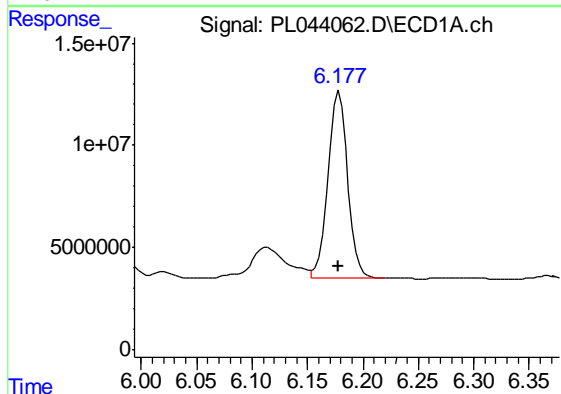
R.T.: 5.350 min
 Delta R.T.: 0.000 min
 Response: 365503642
 Conc: 500.00 ng/ml

Instrument :
 ECD_L
 ClientSampleId :
 PCHLORICC500



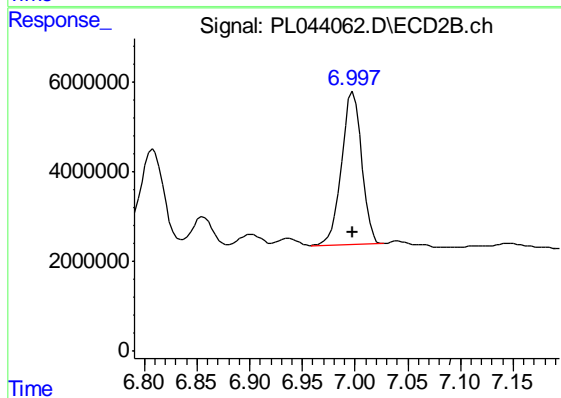
#26 Chlordane-4

R.T.: 6.194 min
 Delta R.T.: 0.000 min
 Response: 238773717
 Conc: 500.00 ng/ml



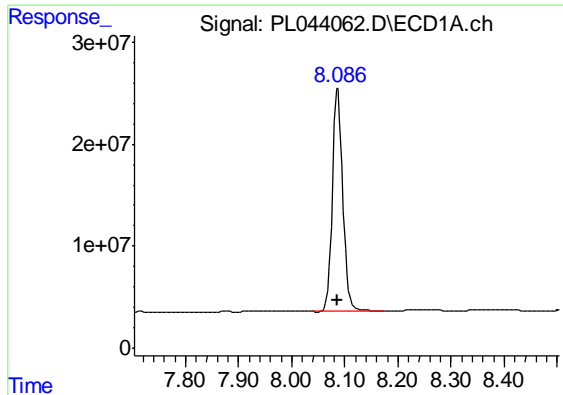
#27 Chlordane-5

R.T.: 6.179 min
 Delta R.T.: 0.000 min
 Response: 112292457
 Conc: 500.00 ng/ml



#27 Chlordane-5

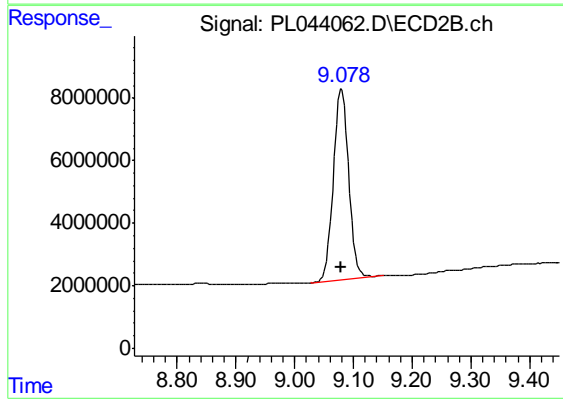
R.T.: 6.998 min
 Delta R.T.: 0.000 min
 Response: 45332855
 Conc: 500.00 ng/ml



#28 Decachlorobiphenyl

R.T.: 8.087 min
Delta R.T.: 0.000 min
Response: 300303023
Conc: 50.00 ng/ml

Instrument :
ECD_L
ClientSampleId :
PCHLORICC500



#28 Decachlorobiphenyl

R.T.: 9.080 min
Delta R.T.: 0.000 min
Response: 111449074
Conc: 50.00 ng/ml