

Data Path : Z:\pestpcbsrv\HPCHEM1\ECD_L\Data\PL011819\
 Data File : PL044075.D
 Signal(s) : Signal #1: ECD1A.ch Signal #2: ECD2B.ch
 Acq On : 18 Jan 2019 17:05
 Operator : AJ\SJ
 Sample : K1171-01
 Misc :
 ALS Vial : 20 Sample Multiplier: 1

Instrument :
 ECD_L
 ClientSampleId :
 EB6-011619-S-001

Manual Integrations
 APPROVED

Sohil
 1/21/2019 10:05:50 AM

Integration File signal 1: autoint1.e
 Integration File signal 2: autoint2.e
 Quant Time: Jan 19 03:15:19 2019
 Quant Method : Z:\pestpcbsrv\HPCHEM1\ECD_L\methods\PL011819.M
 Quant Title : GC Extractables
 QLast Update : Sat Jan 19 02:56:00 2019
 Response via : Initial Calibration
 Integrator: ChemStation

Volume Inj. : 2 µl
 Signal #1 Phase : ZB-MR1 Signal #2 Phase: ZB-MR2
 Signal #1 Info : 30M x 0.32mm x0.5 Signal #2 Info : 30M x 0.32mm x0.25µm

Compound	RT#1	RT#2	Resp#1	Resp#2	ng/ml	ng/ml

System Monitoring Compounds						
1) SA Tetrachlo...	3.382	4.008	114.0E6	53572957	20.952m	22.732
28) SA Decachlor...	8.086	9.080	85957079	30738690	14.544	13.576
Target Compounds						
12) B 4,4'-DDE	5.518	6.349	150.0E6	57953137	25.563	24.198
13) MA Dieldrin	5.640	6.499	21749547	12079500	3.363m	4.500m#
17) MA 4,4'-DDT	6.267	7.137	153.5E6	57733702	30.516	26.424m

(f)=RT Delta > 1/2 Window (#)=Amounts differ by > 25% (m)=manual int.

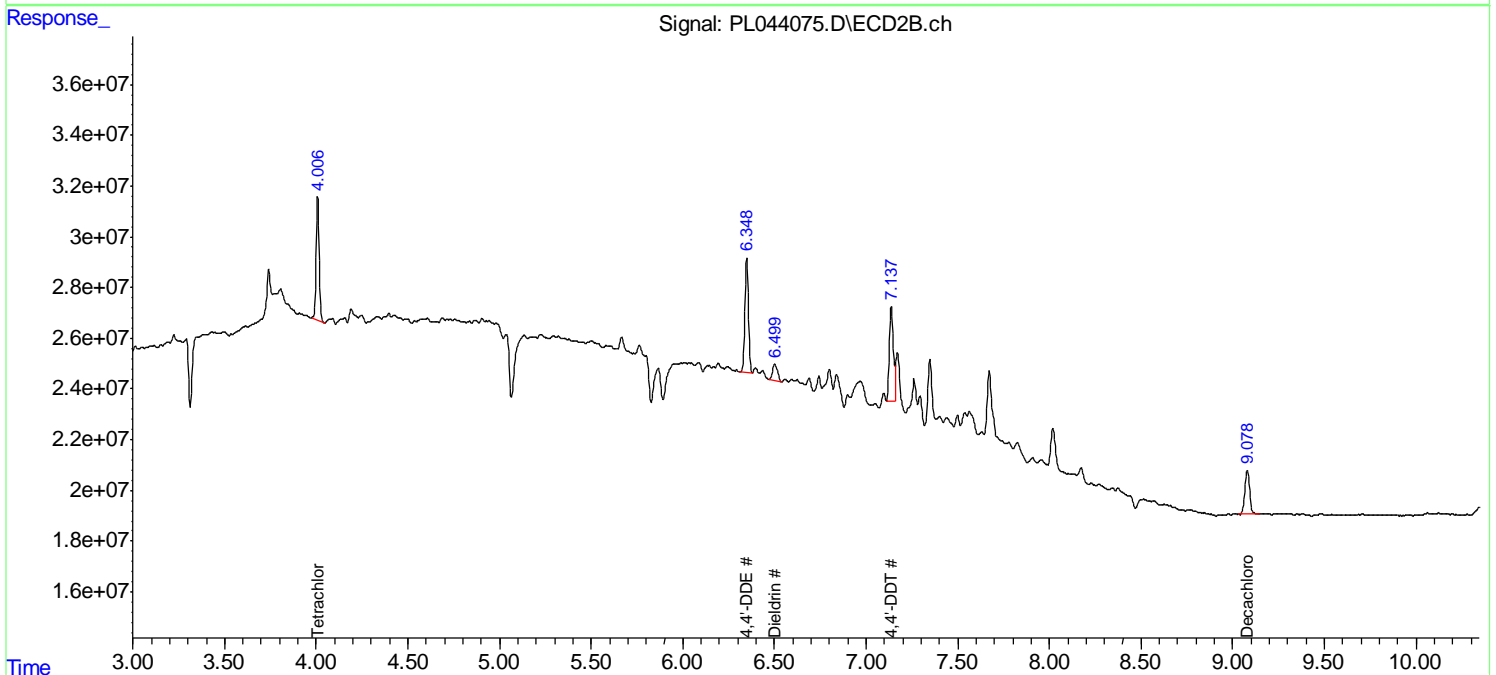
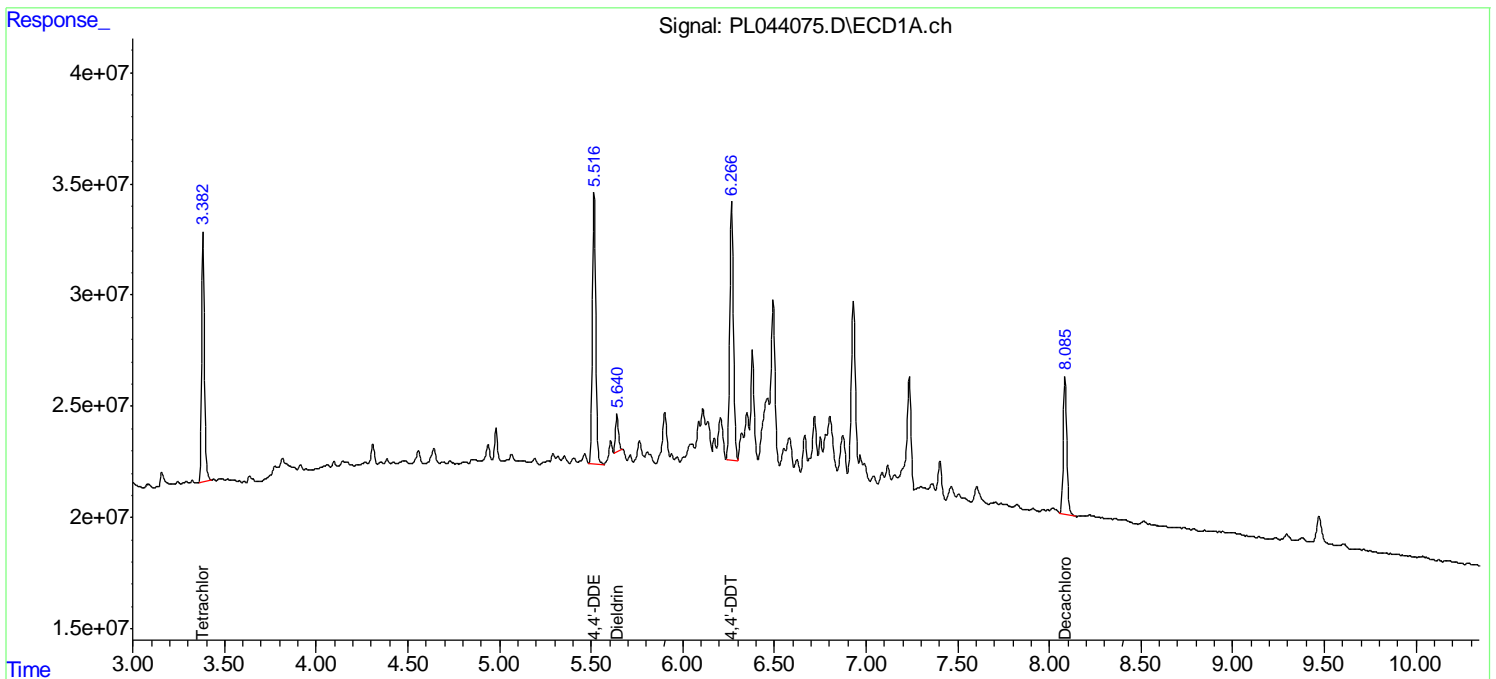
Data Path : Z:\pestpcbsrv\HPCHEM1\ECD_L\Data\PL011819\
 Data File : PL044075.D
 Signal(s) : Signal #1: ECD1A.ch Signal #2: ECD2B.ch
 Acq On : 18 Jan 2019 17:05
 Operator : AJ\SJ
 Sample : K1171-01
 Misc :
 ALS Vial : 20 Sample Multiplier: 1

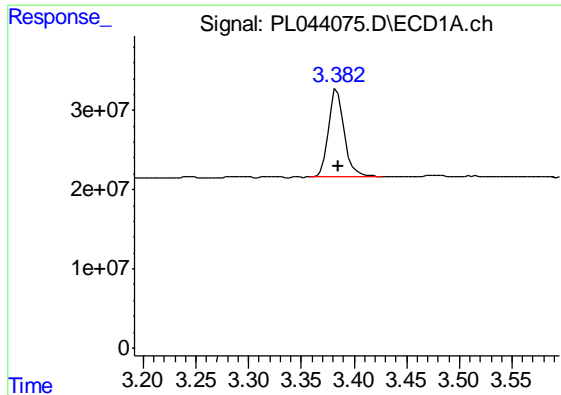
Instrument :
 ECD_L
ClientSampled :
 EB6-011619-S-001

Manual Integrations
APPROVED
 Sohil
 1/21/2019 10:05:50 AM

Integration File signal 1: autoint1.e
 Integration File signal 2: autoint2.e
 Quant Time: Jan 19 03:15:19 2019
 Quant Method : Z:\pestpcbsrv\HPCHEM1\ECD_L\methods\PL011819.M
 Quant Title : GC Extractables
 QLast Update : Sat Jan 19 02:56:00 2019
 Response via : Initial Calibration
 Integrator: ChemStation

Volume Inj. : 2 µl
 Signal #1 Phase : ZB-MR1 Signal #2 Phase: ZB-MR2
 Signal #1 Info : 30M x 0.32mm x0.5 Signal #2 Info : 30M x 0.32mm x0.25µm





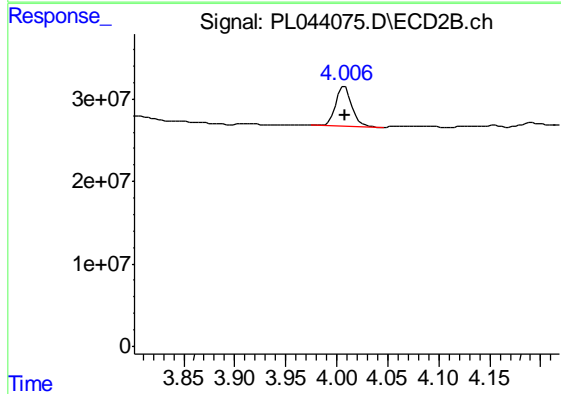
#1 Tetrachloro-m-xylene

R.T.: 3.382 min
 Delta R.T.: -0.003 min
 Response: 114003784
 Conc: 20.95 ng/ml m

Instrument :
 ECD_L
 ClientSampled :
 EB6-011619-S-001

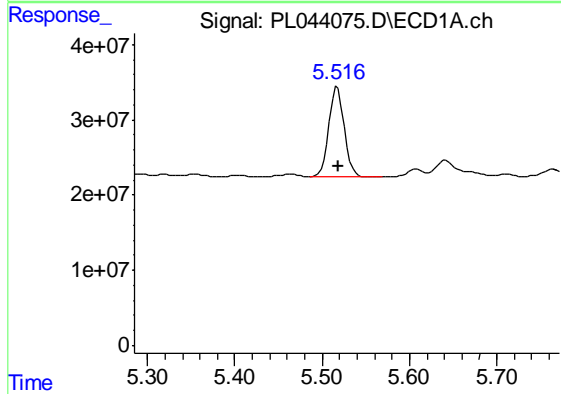
Manual Integrations
 APPROVED

Sohil
 1/21/2019 10:05:50 AM



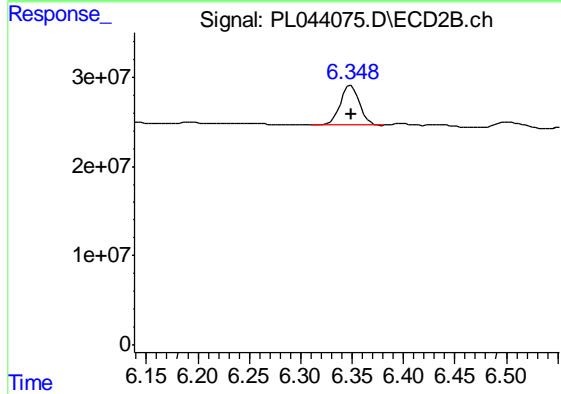
#1 Tetrachloro-m-xylene

R.T.: 4.008 min
 Delta R.T.: 0.000 min
 Response: 53572957
 Conc: 22.73 ng/ml



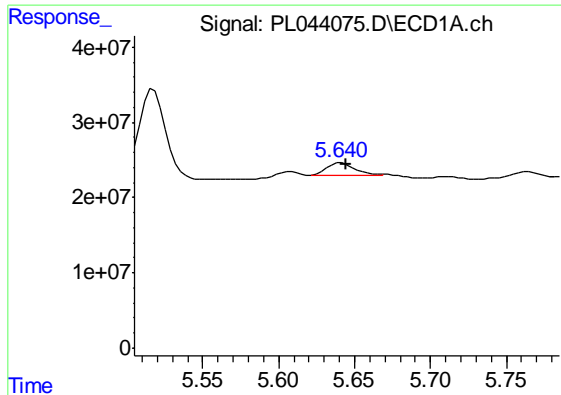
#12 4,4'-DDE

R.T.: 5.518 min
 Delta R.T.: 0.000 min
 Response: 150042333
 Conc: 25.56 ng/ml



#12 4,4'-DDE

R.T.: 6.349 min
 Delta R.T.: 0.000 min
 Response: 57953137
 Conc: 24.20 ng/ml



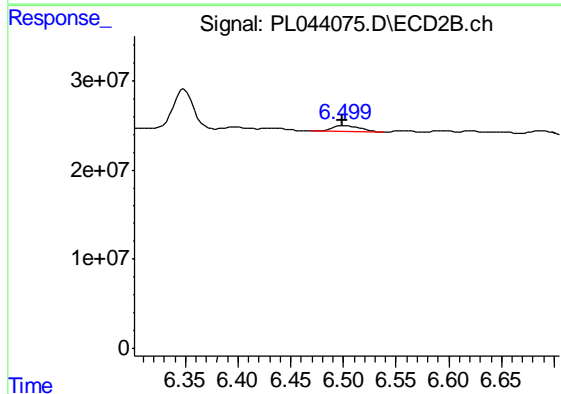
#13 Dieldrin

R.T.: 5.640 min
 Delta R.T.: -0.005 min
 Response: 21749547
 Conc: 3.36 ng/ml m

Instrument :
 ECD_L
 ClientSampled :
 EB6-011619-S-001

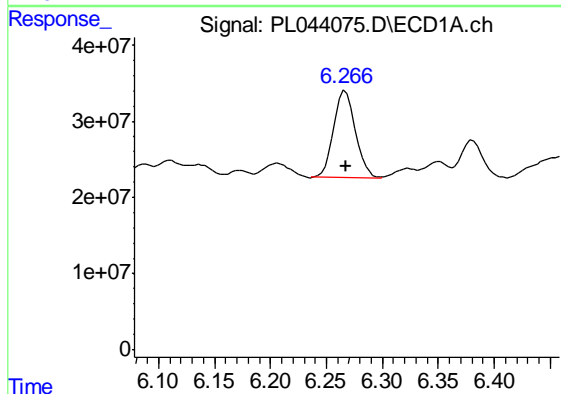
Manual Integrations
 APPROVED

Sohil
 1/21/2019 10:05:50 AM



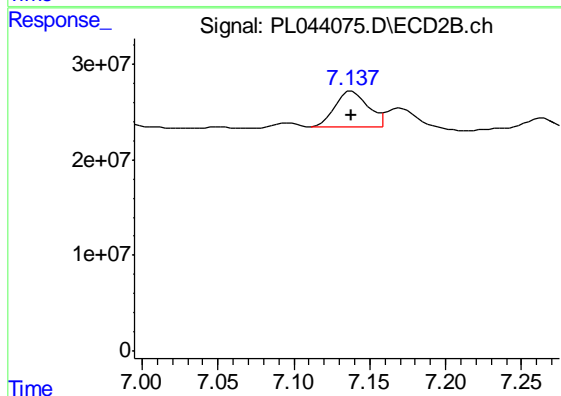
#13 Dieldrin

R.T.: 6.499 min
 Delta R.T.: 0.000 min
 Response: 12079500
 Conc: 4.50 ng/ml m



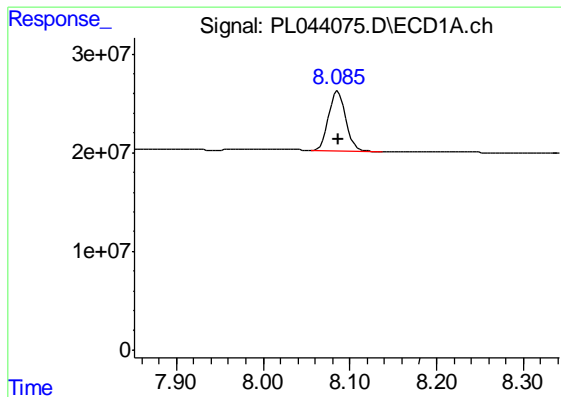
#17 4,4'-DDT

R.T.: 6.267 min
 Delta R.T.: 0.000 min
 Response: 153546010
 Conc: 30.52 ng/ml



#17 4,4'-DDT

R.T.: 7.137 min
 Delta R.T.: -0.001 min
 Response: 57733702
 Conc: 26.42 ng/ml m



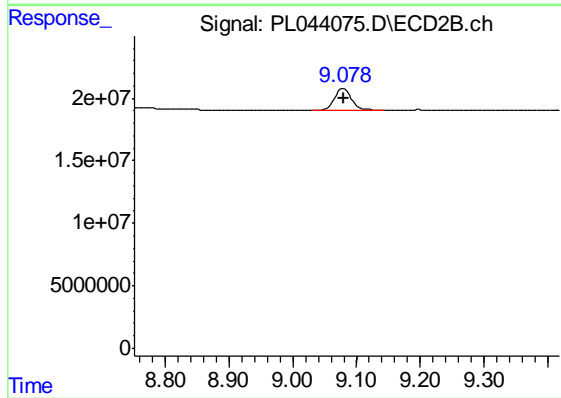
#28 Decachlorobiphenyl

R.T.: 8.086 min
Delta R.T.: -0.002 min
Response: 85957079
Conc: 14.54 ng/ml

Instrument :
ECD_L
ClientSampleId :
EB6-011619-S-001

Manual Integrations
APPROVED

Sohil
1/21/2019 10:05:50 AM



#28 Decachlorobiphenyl

R.T.: 9.080 min
Delta R.T.: 0.000 min
Response: 30738690
Conc: 13.58 ng/ml