

Data Path : Z:\pestpcbsrv\HPCHEM1\ECD\_L\Data\PL011819\  
 Data File : PL044080.D  
 Signal(s) : Signal #1: ECD1A.ch Signal #2: ECD2B.ch  
 Acq On : 18 Jan 2019 18:30  
 Operator : AJ\SJ  
 Sample : K1171-02  
 Misc :  
 ALS Vial : 23 Sample Multiplier: 1

Instrument :  
 ECD\_L  
 ClientSampleId :  
 EB6-011619-S-002

Manual Integrations  
 APPROVED

Sohil  
 1/21/2019 10:06:02 AM

Integration File signal 1: autoint1.e  
 Integration File signal 2: autoint2.e  
 Quant Time: Jan 19 03:16:16 2019  
 Quant Method : Z:\pestpcbsrv\HPCHEM1\ECD\_L\methods\PL011819.M  
 Quant Title : GC Extractables  
 QLast Update : Sat Jan 19 02:56:00 2019  
 Response via : Initial Calibration  
 Integrator: ChemStation

Volume Inj. : 2 µl  
 Signal #1 Phase : ZB-MR1 Signal #2 Phase: ZB-MR2  
 Signal #1 Info : 30M x 0.32mm x0.5 Signal #2 Info : 30M x 0.32mm x0.25µm

Compound	RT#1	RT#2	Resp#1	Resp#2	ng/ml	ng/ml
-----						
System Monitoring Compounds						
1) SA Tetrachlo...	3.384	4.008	203.6E6	79565182	37.427	33.761
28) SA Decachlor...	8.086	9.080	203.7E6	61909561	34.457	27.343
Target Compounds						
12) B 4,4'-DDE	5.516	6.350	19847095	5756628	3.381	2.404m#
17) MA 4,4'-DDT	6.267	7.136	14299125	3689487	2.842	1.689m#
-----						

(f)=RT Delta > 1/2 Window (#)=Amounts differ by > 25% (m)=manual int.

Data Path : Z:\pestpcbsrv\HPCHEM1\ECD\_L\Data\PL011819\  
 Data File : PL044080.D  
 Signal(s) : Signal #1: ECD1A.ch Signal #2: ECD2B.ch  
 Acq On : 18 Jan 2019 18:30  
 Operator : AJ\SJ  
 Sample : K1171-02  
 Misc :  
 ALS Vial : 23 Sample Multiplier: 1

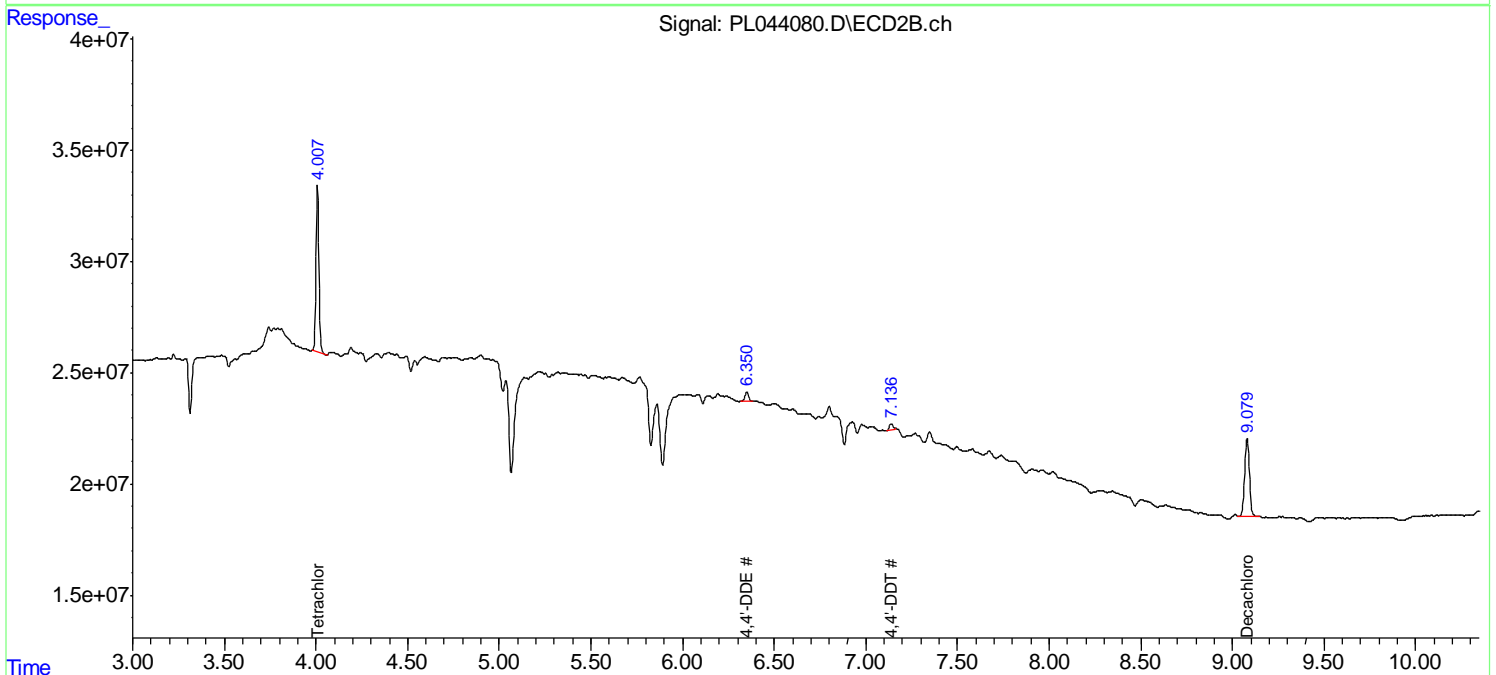
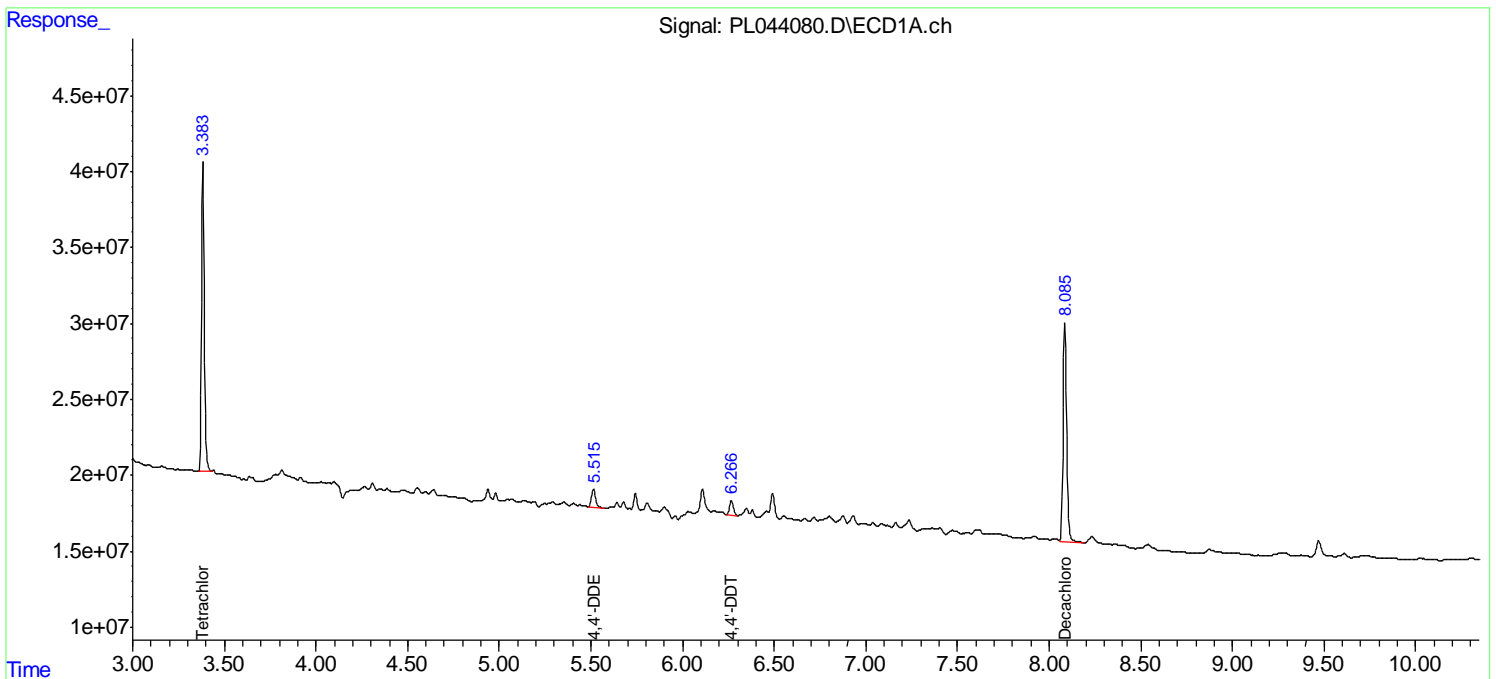
Instrument :  
 ECD\_L  
 ClientSampleId :  
 EB6-011619-S-002

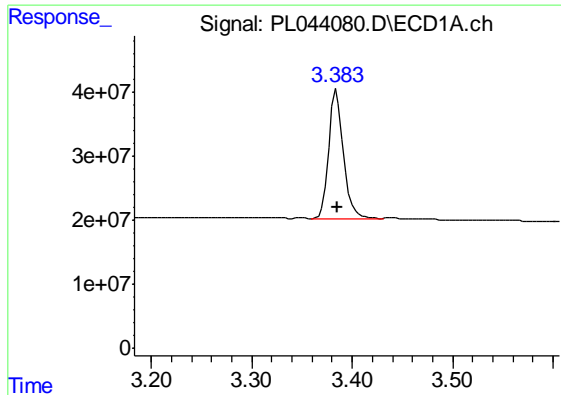
Manual Integrations  
 APPROVED

Sohil  
 1/21/2019 10:06:02 AM

Integration File signal 1: autoint1.e  
 Integration File signal 2: autoint2.e  
 Quant Time: Jan 19 03:16:16 2019  
 Quant Method : Z:\pestpcbsrv\HPCHEM1\ECD\_L\methods\PL011819.M  
 Quant Title : GC Extractables  
 QLast Update : Sat Jan 19 02:56:00 2019  
 Response via : Initial Calibration  
 Integrator: ChemStation

Volume Inj. : 2 µl  
 Signal #1 Phase : ZB-MR1 Signal #2 Phase: ZB-MR2  
 Signal #1 Info : 30M x 0.32mm x0.5 Signal #2 Info : 30M x 0.32mm x0.25µm





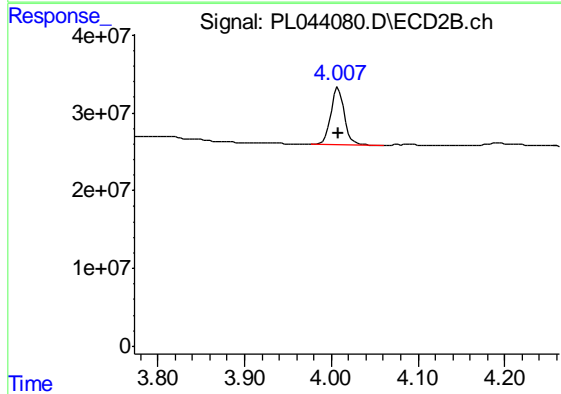
#1 Tetrachloro-m-xylene

R.T.: 3.384 min  
 Delta R.T.: 0.000 min  
 Response: 203644761  
 Conc: 37.43 ng/ml

Instrument :  
 ECD\_L  
 ClientSampled :  
 EB6-011619-S-002

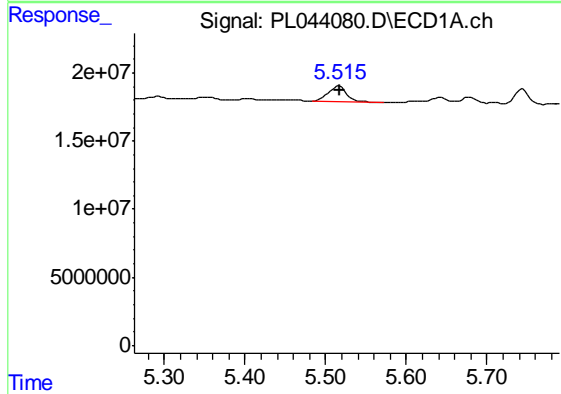
Manual Integrations  
 APPROVED

Sohil  
 1/21/2019 10:06:02 AM



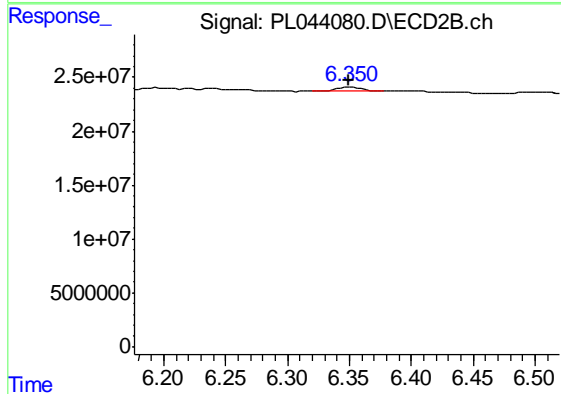
#1 Tetrachloro-m-xylene

R.T.: 4.008 min  
 Delta R.T.: 0.000 min  
 Response: 79565182  
 Conc: 33.76 ng/ml



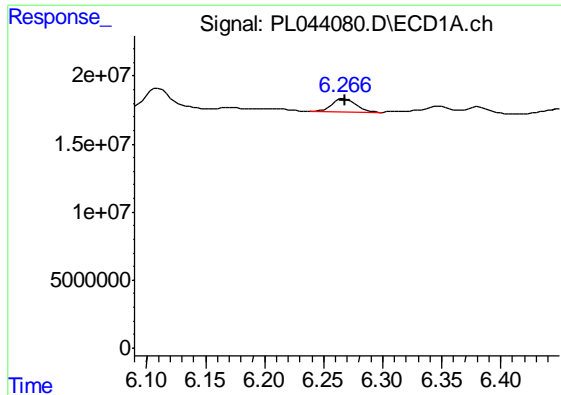
#12 4,4'-DDE

R.T.: 5.516 min  
 Delta R.T.: -0.002 min  
 Response: 19847095  
 Conc: 3.38 ng/ml



#12 4,4'-DDE

R.T.: 6.350 min  
 Delta R.T.: 0.000 min  
 Response: 5756628  
 Conc: 2.40 ng/ml m



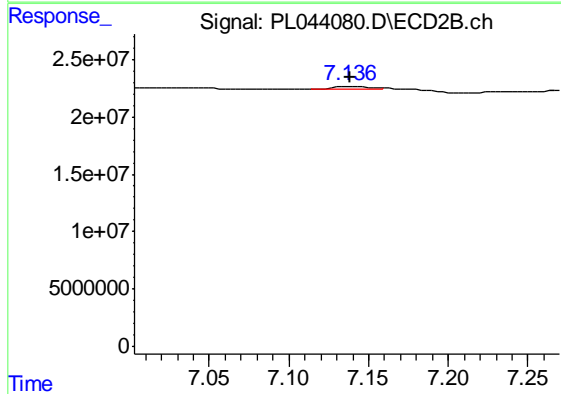
#17 4,4'-DDT

R.T.: 6.267 min  
 Delta R.T.: 0.000 min  
 Response: 14299125  
 Conc: 2.84 ng/ml

Instrument :  
 ECD\_L  
 ClientSampleId :  
 EB6-011619-S-002

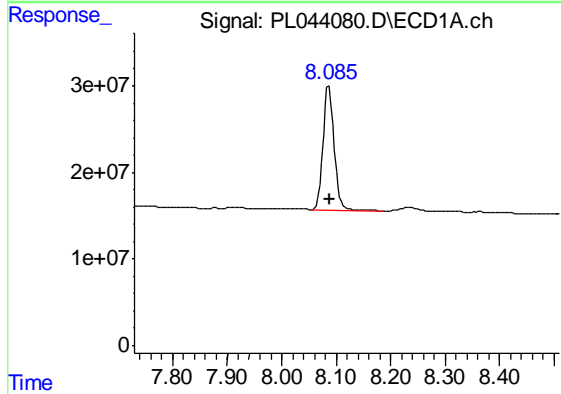
Manual Integrations  
 APPROVED

Sohil  
 1/21/2019 10:06:02 AM



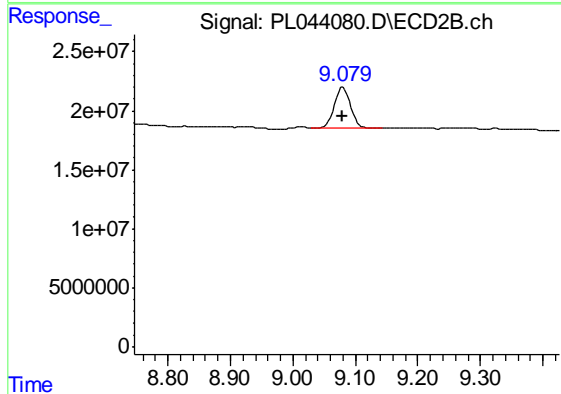
#17 4,4'-DDT

R.T.: 7.136 min  
 Delta R.T.: -0.002 min  
 Response: 3689487  
 Conc: 1.69 ng/ml m



#28 Decachlorobiphenyl

R.T.: 8.086 min  
 Delta R.T.: -0.001 min  
 Response: 203655371  
 Conc: 34.46 ng/ml



#28 Decachlorobiphenyl

R.T.: 9.080 min  
 Delta R.T.: 0.000 min  
 Response: 61909561  
 Conc: 27.34 ng/ml