

Data Path : Z:\pestpcbsrv\HPCHEM1\ECD_L\Data\PL011821\
 Data File : PL064175.D
 Signal(s) : Signal #1: ECD1A.ch Signal #2: ECD2B.ch
 Acq On : 18 Jan 2021 11:07
 Operator : AR\AJ
 Sample : PEM
 Misc :
 ALS Vial : 3 Sample Multiplier: 1

Instrument :
 ECD_L
ClientSampled :
 PEM

Manual Integrations
APPROVED
 Ankita
 1/19/2021 12:10:35 PM

Integration File signal 1: autoint1.e
 Integration File signal 2: autoint2.e
 Quant Time: Jan 18 14:05:57 2021
 Quant Method : Z:\pestpcbsrv\HPCHEM1\ECD_L\methods\PL011221.M
 Quant Title : GC Extractables
 QLast Update : Mon Jan 18 13:25:12 2021
 Response via : Initial Calibration
 Integrator: ChemStation

Volume Inj. : 1 µl
 Signal #1 Phase : ZB-MR2 Signal #2 Phase: ZB-MR1
 Signal #1 Info : 30M x 0.32mm x0.2 Signal #2 Info : 30M x 0.32mm x0.5µm

| Compound | RT#1 | RT#2 | Resp#1 | Resp#2 | ng/ml | ng/ml |
|-----------------------------|-------|-------|----------|----------|---------|---------|
| ----- | | | | | | |
| System Monitoring Compounds | | | | | | |
| 1) SA Tetrachlo... | 3.435 | 4.108 | 60232833 | 49731265 | 20.088 | 19.453 |
| 28) SA Decachlor... | 8.169 | 9.271 | 62395414 | 46712819 | 20.444 | 19.682 |
| Target Compounds | | | | | | |
| 2) A alpha-BHC | 3.868 | 4.510 | 45664795 | 30434146 | 9.181 | 8.328 |
| 3) MA gamma-BHC... | 4.149 | 4.801 | 48497693 | 29770403 | 10.460 | 8.452 |
| 6) B beta-BHC | 4.397 | 4.978 | 22517451 | 18035757 | 9.669m | 8.012 |
| 12) B 4,4'-DDE | 5.585 | 6.483 | 703209 | 449236 | 0.200m | 0.169m |
| 14) MA Endrin | 5.969 | 6.865 | 182.9E6 | 111.0E6 | 52.666 | 48.594 |
| 16) A 4,4'-DDD | 6.099 | 6.984 | 1398288 | 1350958 | 0.479m | 0.609m# |
| 17) MA 4,4'-DDT | 6.340 | 7.283 | 339.4E6 | 222.8E6 | 113.700 | 98.384 |
| 18) B Endrin al... | 6.409 | 7.203 | 977361 | 464916 | 0.341m | 0.214m# |
| 20) A Methoxychlor | 6.887 | 7.742 | 388.2E6 | 297.7E6 | 232.315 | 220.328 |
| 21) B Endrin ke... | 7.106 | 7.907 | 2931201 | 1703352 | 0.816m | 0.683 |

(f)=RT Delta > 1/2 Window (#)=Amounts differ by > 25% (m)=manual int.

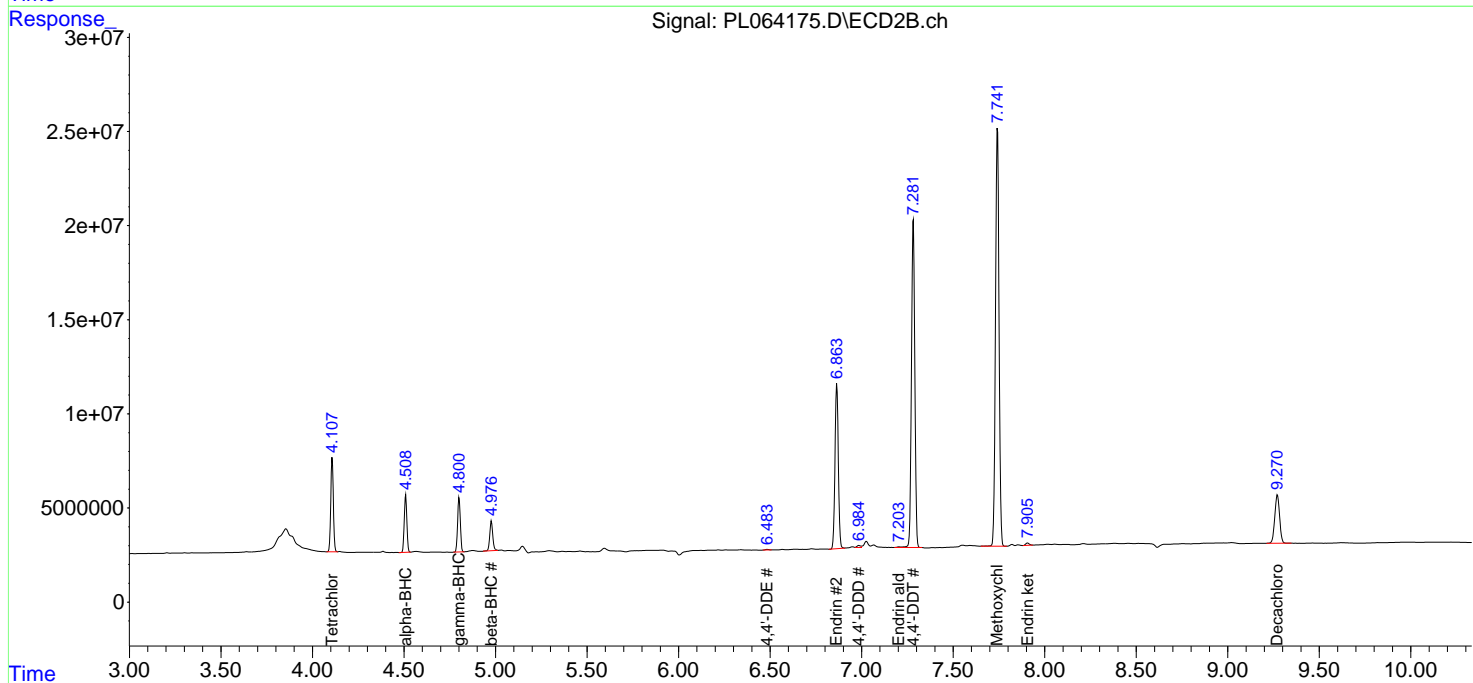
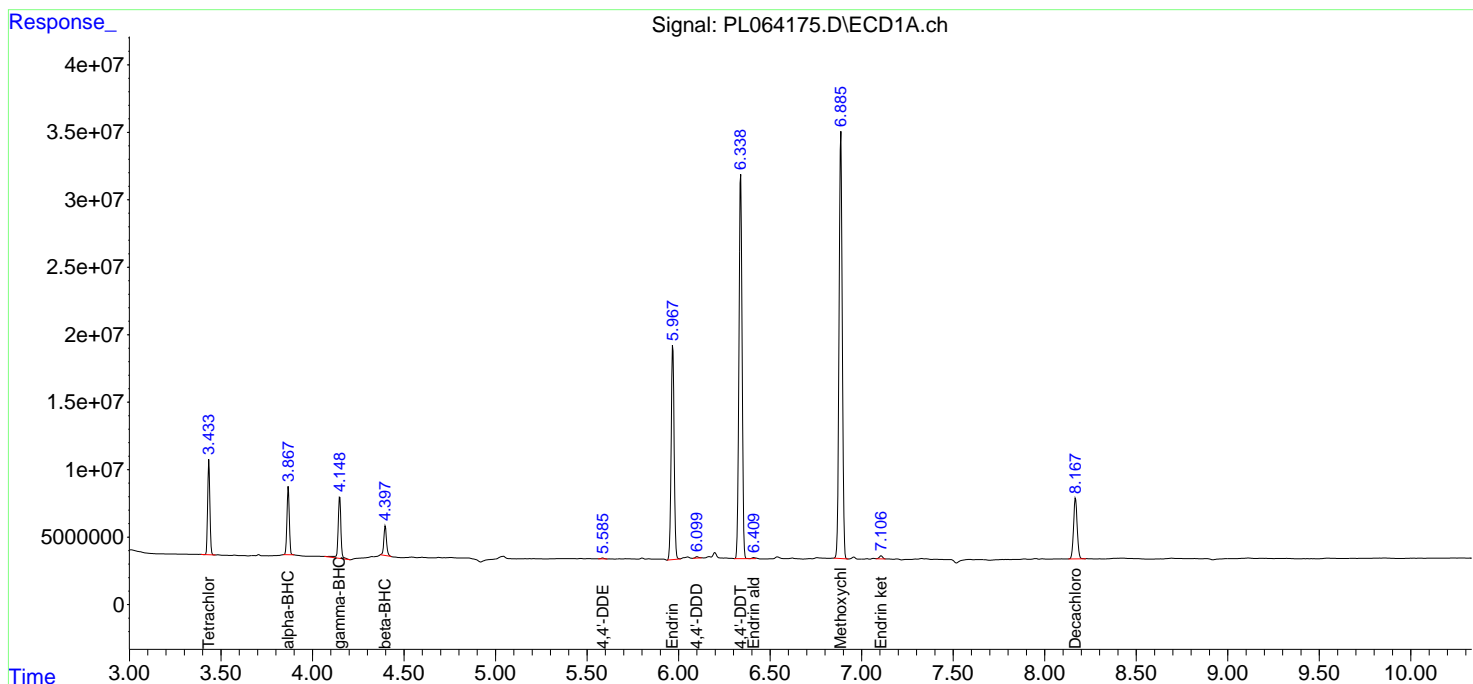
Data Path : Z:\pestpcbsrv\HPCHEM1\ECD_L\Data\PL011821\
 Data File : PL064175.D
 Signal(s) : Signal #1: ECD1A.ch Signal #2: ECD2B.ch
 Acq On : 18 Jan 2021 11:07
 Operator : AR\AJ
 Sample : PEM
 Misc :
 ALS Vial : 3 Sample Multiplier: 1

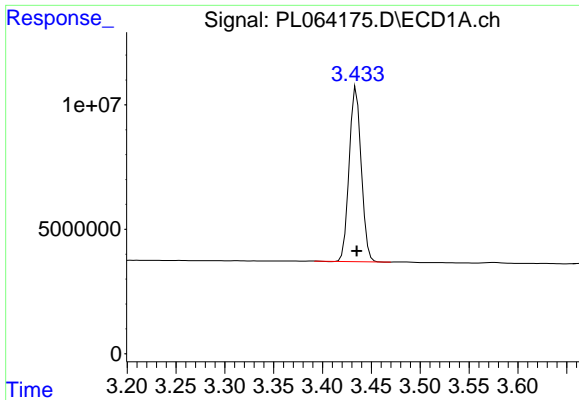
Instrument :
 ECD_L
 Client Sampled :
 PEM

Manual Integrations
APPROVED
 Ankita
 1/19/2021 12:10:35 PM

Integration File signal 1: autoint1.e
 Integration File signal 2: autoint2.e
 Quant Time: Jan 18 14:05:57 2021
 Quant Method : Z:\pestpcbsrv\HPCHEM1\ECD_L\methods\PL011221.M
 Quant Title : GC Extractables
 QLast Update : Mon Jan 18 13:25:12 2021
 Response via : Initial Calibration
 Integrator: ChemStation

Volume Inj. : 1 µl
 Signal #1 Phase : ZB-MR2 Signal #2 Phase: ZB-MR1
 Signal #1 Info : 30M x 0.32mm x0.2 Signal #2 Info : 30M x 0.32mm x0.5µm

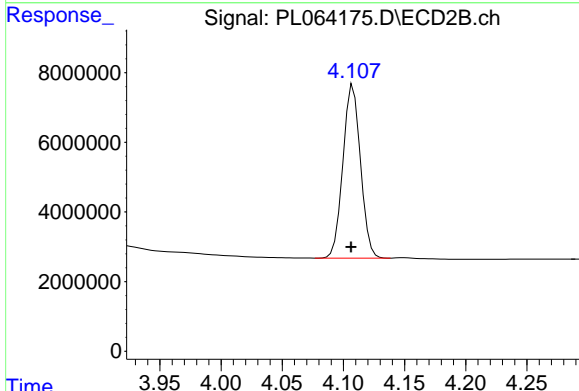




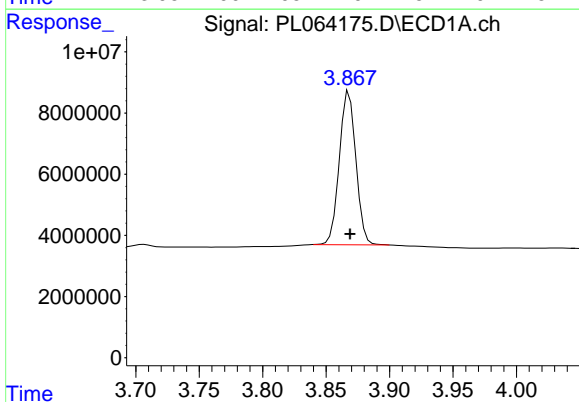
#1 Tetrachloro-m-xylene
 R.T.: 3.435 min
 Delta R.T.: 0.000 min
 Response: 60232833
 Conc: 20.09 ng/ml

Instrument :
 ECD_L
 ClientSampled :
 PEM

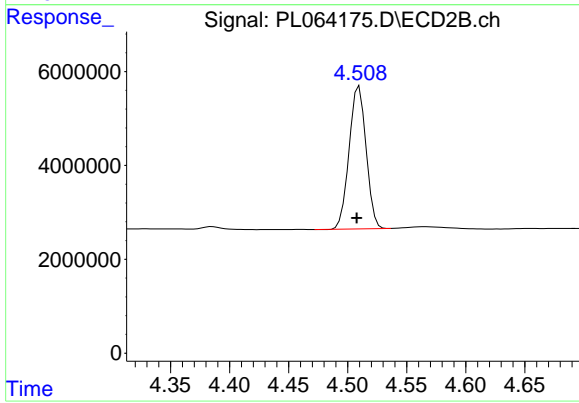
Manual Integrations
 APPROVED
 Ankita
 1/19/2021 12:10:35 PM



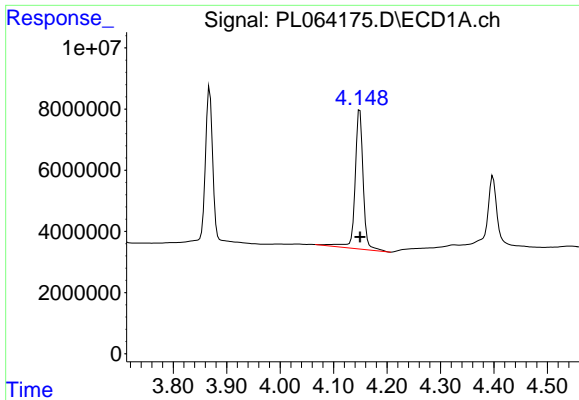
#1 Tetrachloro-m-xylene
 R.T.: 4.108 min
 Delta R.T.: 0.002 min
 Response: 49731265
 Conc: 19.45 ng/ml



#2 alpha-BHC
 R.T.: 3.868 min
 Delta R.T.: 0.000 min
 Response: 45664795
 Conc: 9.18 ng/ml



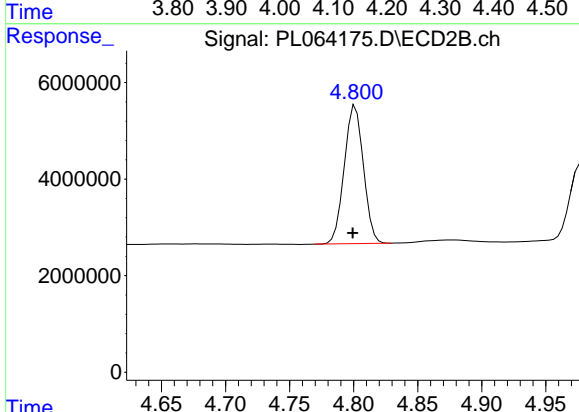
#2 alpha-BHC
 R.T.: 4.510 min
 Delta R.T.: 0.002 min
 Response: 30434146
 Conc: 8.33 ng/ml



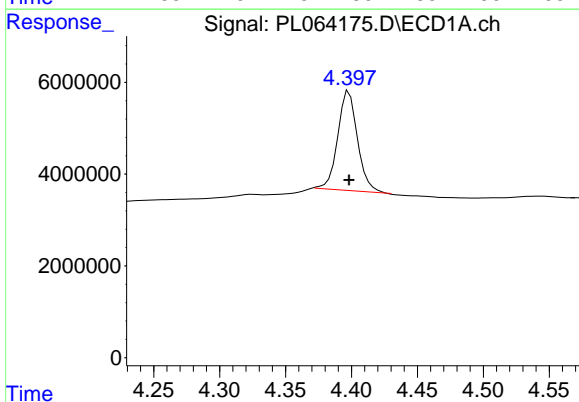
#3 gamma-BHC (Lindane)
 R.T.: 4.149 min
 Delta R.T.: 0.000 min
 Response: 48497693
 Conc: 10.46 ng/ml

Instrument :
 ECD_L
 ClientSampled :
 PEM

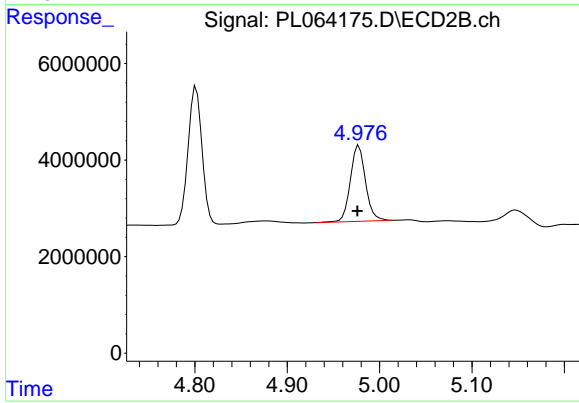
Manual Integrations
 APPROVED
 Ankita
 1/19/2021 12:10:35 PM



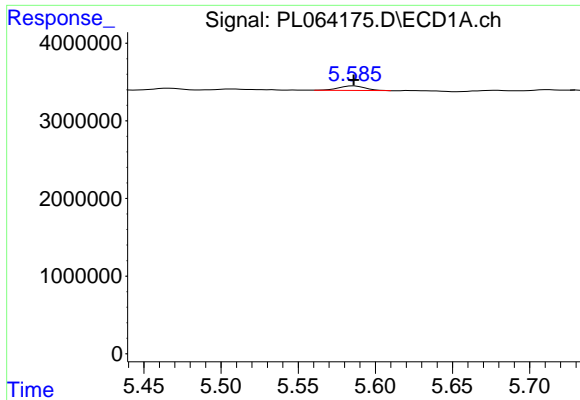
#3 gamma-BHC (Lindane)
 R.T.: 4.801 min
 Delta R.T.: 0.002 min
 Response: 29770403
 Conc: 8.45 ng/ml



#6 beta-BHC
 R.T.: 4.397 min
 Delta R.T.: -0.002 min
 Response: 22517451
 Conc: 9.67 ng/ml m



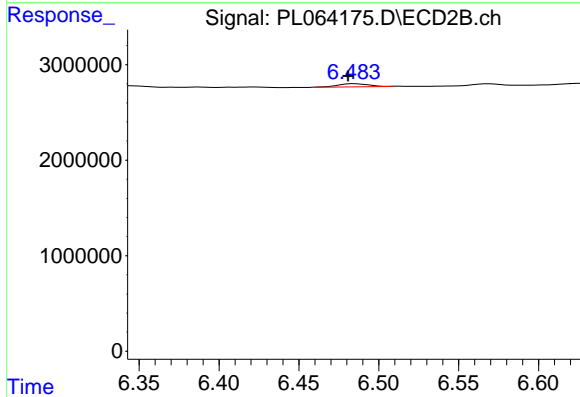
#6 beta-BHC
 R.T.: 4.978 min
 Delta R.T.: 0.002 min
 Response: 18035757
 Conc: 8.01 ng/ml



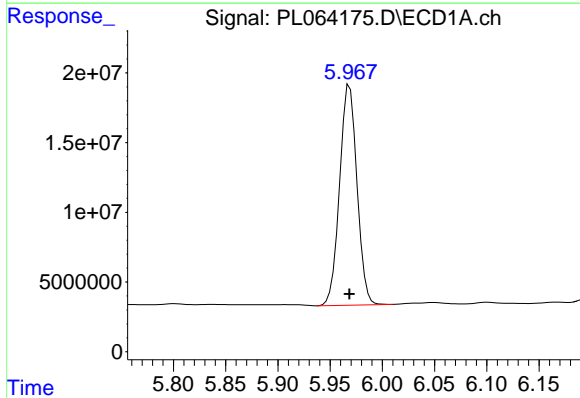
#12 4,4'-DDE
 R.T.: 5.585 min
 Delta R.T.: -0.001 min
 Response: 703209
 Conc: 0.20 ng/ml m

Instrument :
 ECD_L
 ClientSampled :
 PEM

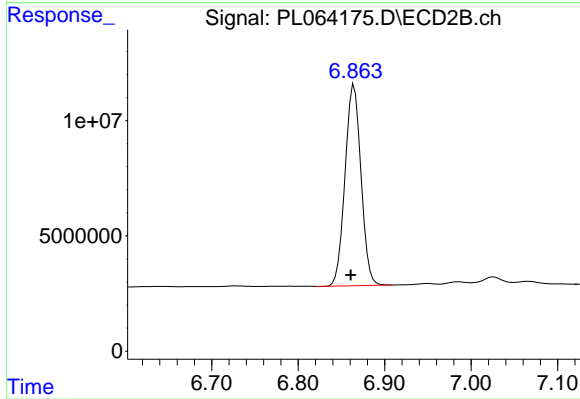
Manual Integrations
APPROVED
 Ankita
 1/19/2021 12:10:35 PM



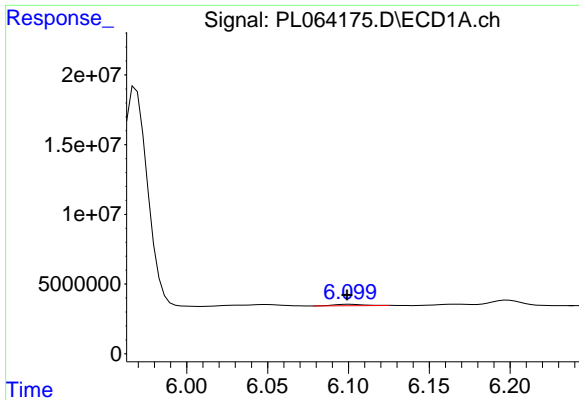
#12 4,4'-DDE
 R.T.: 6.483 min
 Delta R.T.: 0.002 min
 Response: 449236
 Conc: 0.17 ng/ml m



#14 Endrin
 R.T.: 5.969 min
 Delta R.T.: 0.000 min
 Response: 182878274
 Conc: 52.67 ng/ml



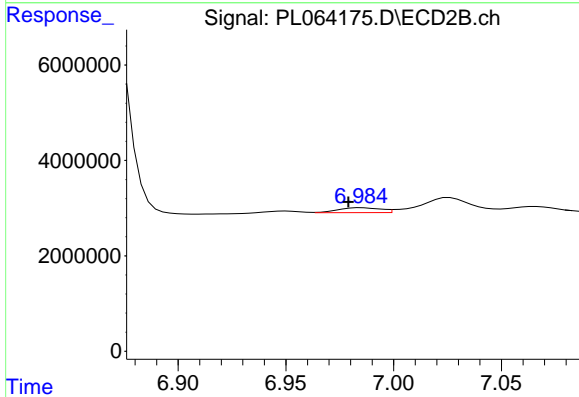
#14 Endrin
 R.T.: 6.865 min
 Delta R.T.: 0.004 min
 Response: 110966804
 Conc: 48.59 ng/ml



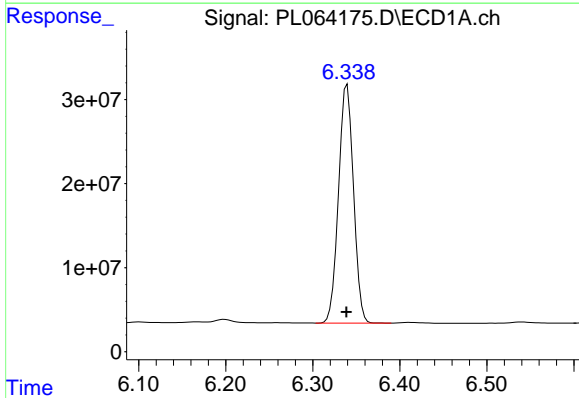
#16 4,4'-DDD
 R.T.: 6.099 min
 Delta R.T.: 0.000 min
 Response: 1398288
 Conc: 0.48 ng/ml m

Instrument :
 ECD_L
 ClientSampled :
 PEM

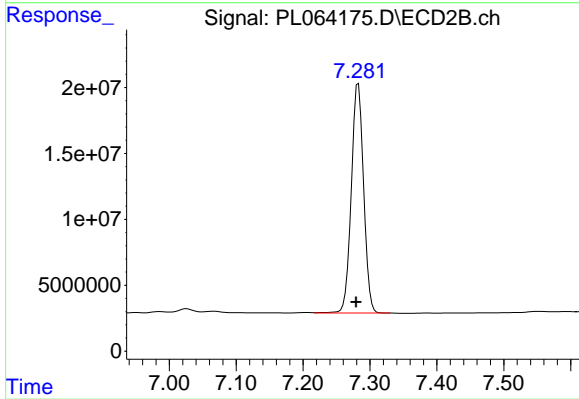
Manual Integrations
 APPROVED
 Ankita
 1/19/2021 12:10:35 PM



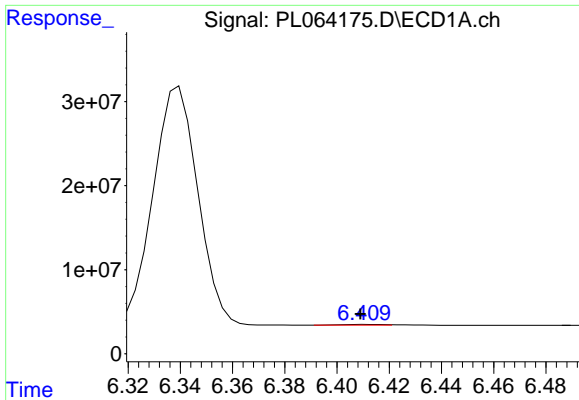
#16 4,4'-DDD
 R.T.: 6.984 min
 Delta R.T.: 0.005 min
 Response: 1350958
 Conc: 0.61 ng/ml m



#17 4,4'-DDT
 R.T.: 6.340 min
 Delta R.T.: 0.000 min
 Response: 339435310
 Conc: 113.70 ng/ml



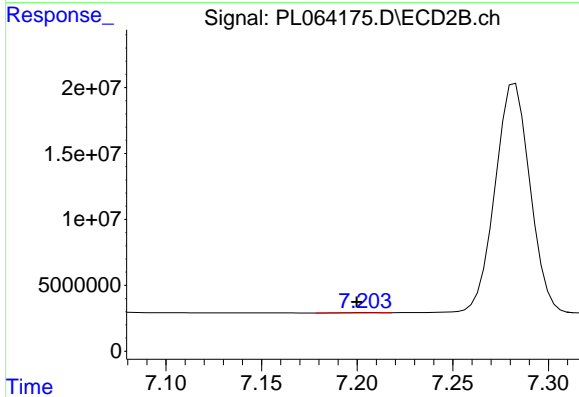
#17 4,4'-DDT
 R.T.: 7.283 min
 Delta R.T.: 0.003 min
 Response: 222836751
 Conc: 98.38 ng/ml



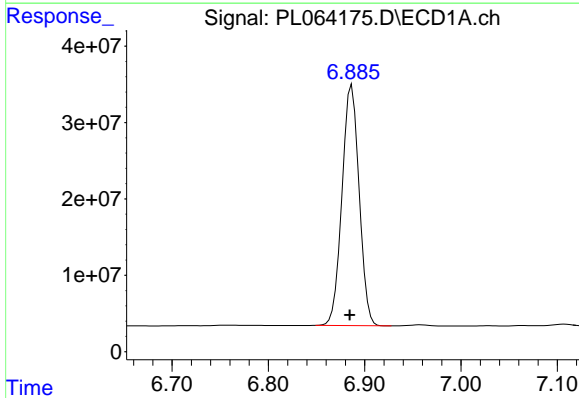
#18 Endrin aldehyde
 R.T.: 6.409 min
 Delta R.T.: 0.000 min
 Response: 977361
 Conc: 0.34 ng/ml m

Instrument :
 ECD_L
 ClientSampled :
 PEM

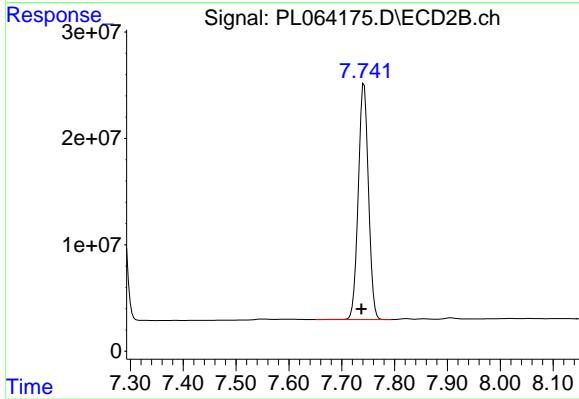
Manual Integrations
 APPROVED
 Ankita
 1/19/2021 12:10:35 PM



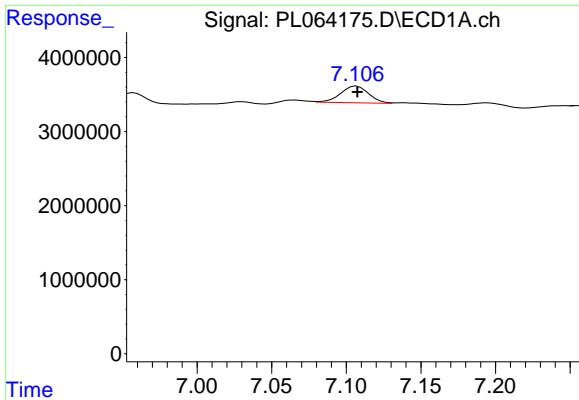
#18 Endrin aldehyde
 R.T.: 7.203 min
 Delta R.T.: 0.003 min
 Response: 464916
 Conc: 0.21 ng/ml m



#20 Methoxychlor
 R.T.: 6.887 min
 Delta R.T.: 0.002 min
 Response: 388231354
 Conc: 232.31 ng/ml



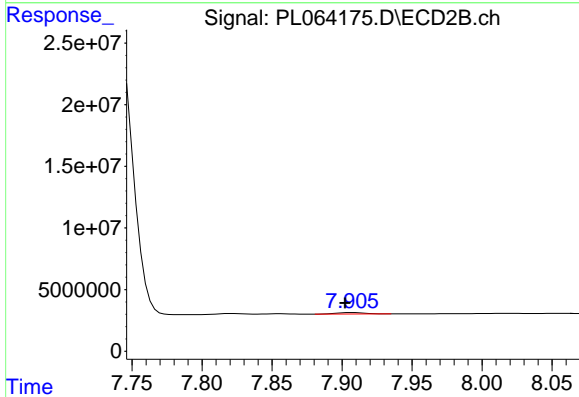
#20 Methoxychlor
 R.T.: 7.742 min
 Delta R.T.: 0.005 min
 Response: 297697205
 Conc: 220.33 ng/ml



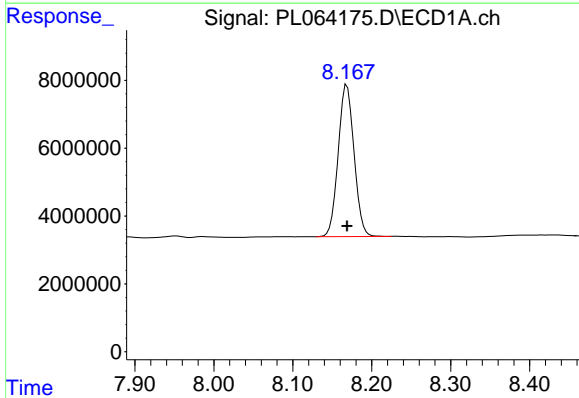
#21 Endrin ketone
 R.T.: 7.106 min
 Delta R.T.: -0.002 min
 Response: 2931201
 Conc: 0.82 ng/ml m

Instrument :
 ECD_L
 ClientSampled :
 PEM

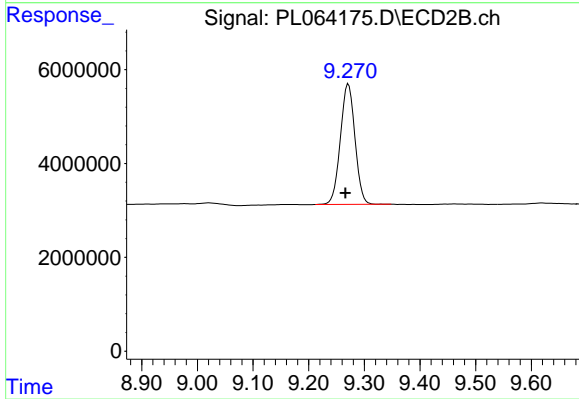
Manual Integrations
 APPROVED
 Ankita
 1/19/2021 12:10:35 PM



#21 Endrin ketone
 R.T.: 7.907 min
 Delta R.T.: 0.004 min
 Response: 1703352
 Conc: 0.68 ng/ml



#28 Decachlorobiphenyl
 R.T.: 8.169 min
 Delta R.T.: 0.000 min
 Response: 62395414
 Conc: 20.44 ng/ml



#28 Decachlorobiphenyl
 R.T.: 9.271 min
 Delta R.T.: 0.005 min
 Response: 46712819
 Conc: 19.68 ng/ml