

Data Path : Z:\pestpcbsrv\HPCHEM1\ECD_L\Data\PL011821\
 Data File : PL064183.D
 Signal(s) : Signal #1: ECD1A.ch Signal #2: ECD2B.ch
 Acq On : 18 Jan 2021 13:05
 Operator : AR\AJ
 Sample : PEM
 Misc :
 ALS Vial : 3 Sample Multiplier: 1

Instrument :
 ECD_L
ClientSampled :
 PEM

Manual Integrations
APPROVED
 Ankita
 1/19/2021 12:10:40 PM

Integration File signal 1: autoint1.e
 Integration File signal 2: autoint2.e
 Quant Time: Jan 18 15:22:33 2021
 Quant Method : Z:\pestpcbsrv\HPCHEM1\ECD_L\methods\PL011221.M
 Quant Title : GC Extractables
 QLast Update : Mon Jan 18 13:25:12 2021
 Response via : Initial Calibration
 Integrator: ChemStation

Volume Inj. : 1 µl
 Signal #1 Phase : ZB-MR2 Signal #2 Phase: ZB-MR1
 Signal #1 Info : 30M x 0.32mm x0.2 Signal #2 Info : 30M x 0.32mm x0.5µm

Compound	RT#1	RT#2	Resp#1	Resp#2	ng/ml	ng/ml

System Monitoring Compounds						
1) SA Tetrachlo...	3.435	4.107	64220851	52077845	21.418	20.371
28) SA Decachlor...	8.170	9.272	67649149	50142716	22.165	21.127
Target Compounds						
2) A alpha-BHC	3.869	4.509	49260963	32568727	9.904	8.912
3) MA gamma-BHC...	4.149	4.801	46724633	31487847	10.078	8.939
6) B beta-BHC	4.398	4.977	22927932	22117058	9.903	10.752
12) B 4,4'-DDE	5.585	6.482	1037497	457278	0.295m	0.172m#
14) MA Endrin	5.970	6.864	193.8E6	121.1E6	55.820	53.035
16) A 4,4'-DDD	6.099	6.982	1516147	1666085	0.520m	0.752m#
17) MA 4,4'-DDT	6.340	7.282	358.7E6	240.9E6	120.145	106.380
18) B Endrin al...	6.409	7.202	1494231	824955	0.521m	0.380m#
20) A Methoxychlor	6.888	7.742	414.8E6	324.3E6	248.196	239.998
21) B Endrin ke...	7.106	7.906	3592951	1973019	1.000m	0.791

(f)=RT Delta > 1/2 Window (#)=Amounts differ by > 25% (m)=manual int.

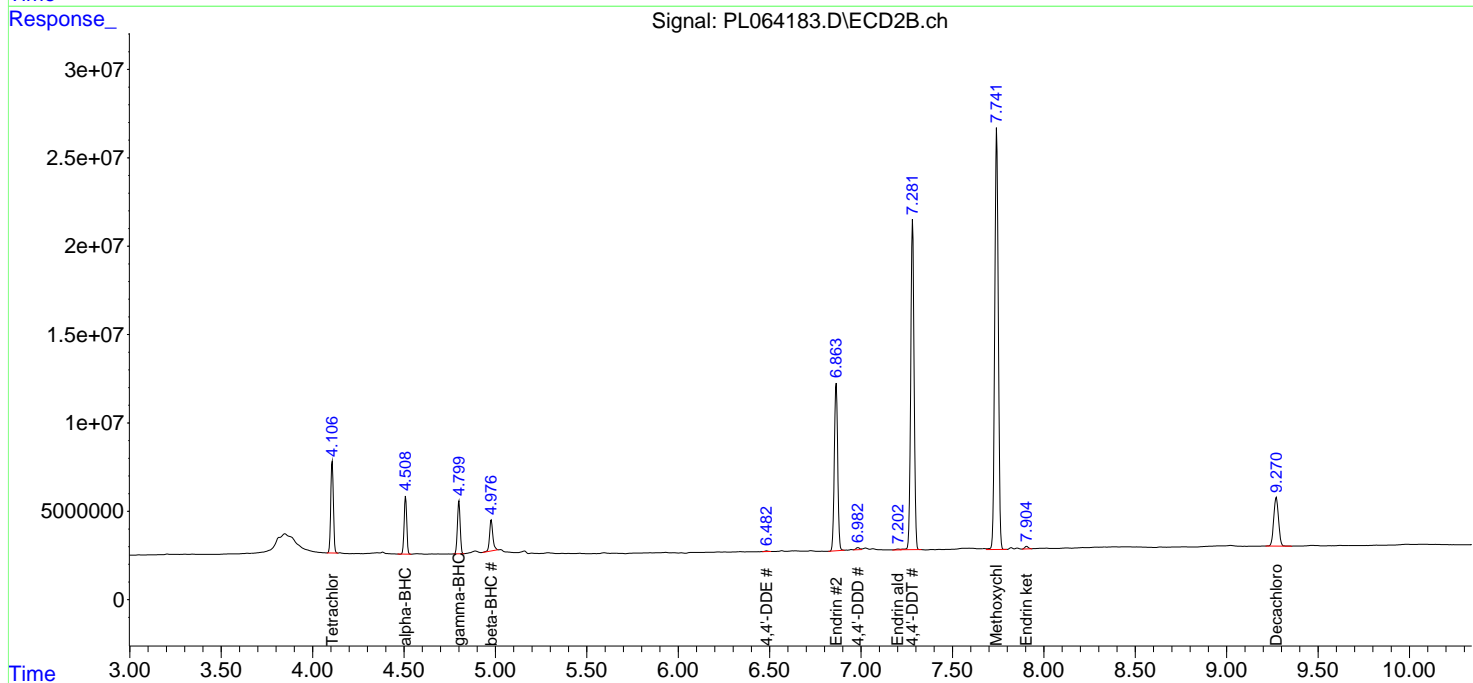
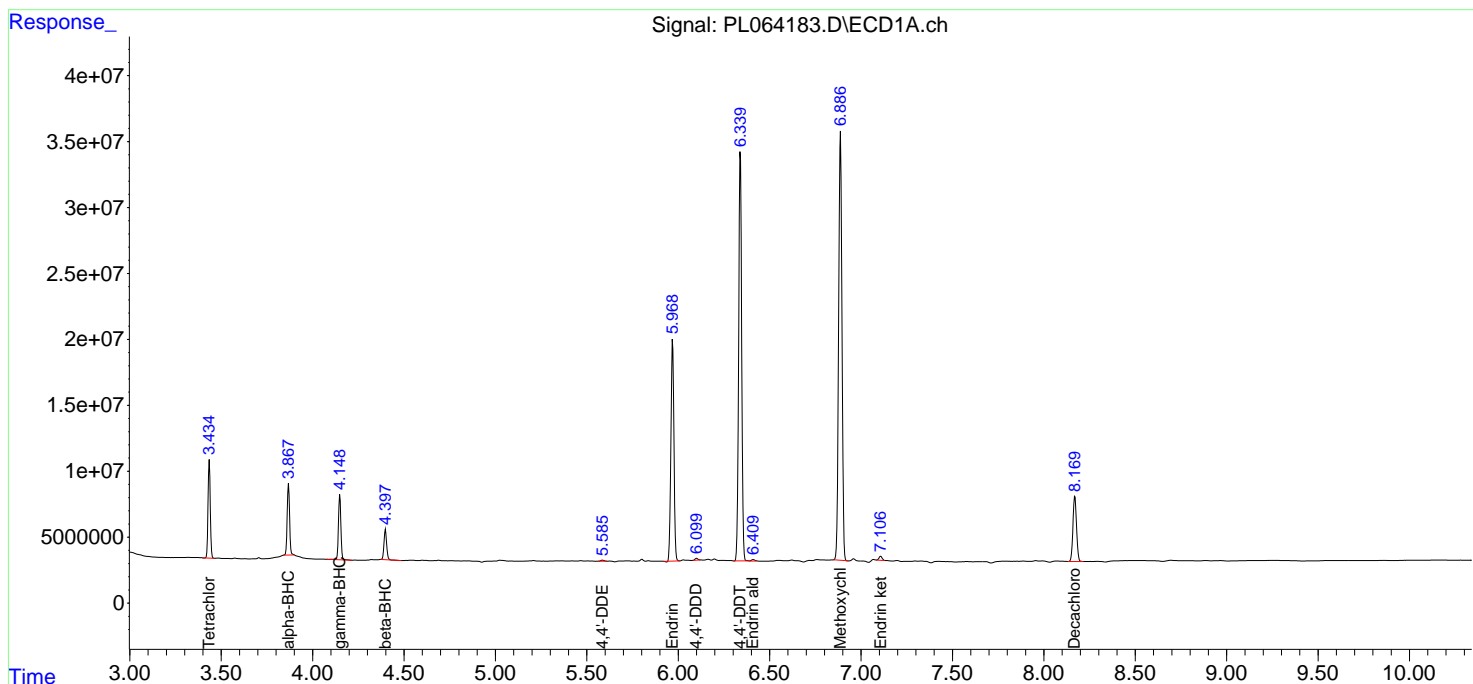
Data Path : Z:\pestpcbsrv\HPCHEM1\ECD_L\Data\PL011821\
 Data File : PL064183.D
 Signal(s) : Signal #1: ECD1A.ch Signal #2: ECD2B.ch
 Acq On : 18 Jan 2021 13:05
 Operator : AR\AJ
 Sample : PEM
 Misc :
 ALS Vial : 3 Sample Multiplier: 1

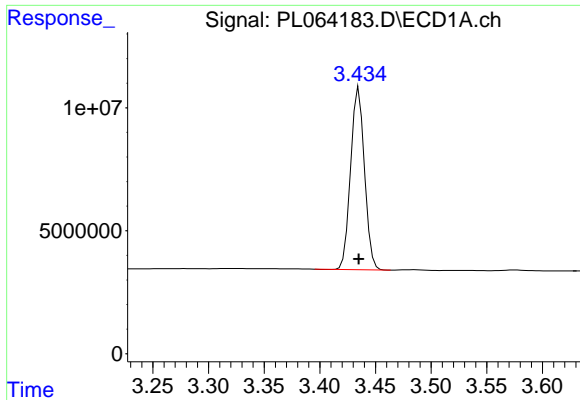
Instrument :
 ECD_L
 ClientSampled :
 PEM

Manual Integrations
APPROVED
 Ankita
 1/19/2021 12:10:40 PM

Integration File signal 1: autoint1.e
 Integration File signal 2: autoint2.e
 Quant Time: Jan 18 15:22:33 2021
 Quant Method : Z:\pestpcbsrv\HPCHEM1\ECD_L\methods\PL011221.M
 Quant Title : GC Extractables
 QLast Update : Mon Jan 18 13:25:12 2021
 Response via : Initial Calibration
 Integrator: ChemStation

Volume Inj. : 1 µl
 Signal #1 Phase : ZB-MR2 Signal #2 Phase: ZB-MR1
 Signal #1 Info : 30M x 0.32mm x0.2 Signal #2 Info : 30M x 0.32mm x0.5µm

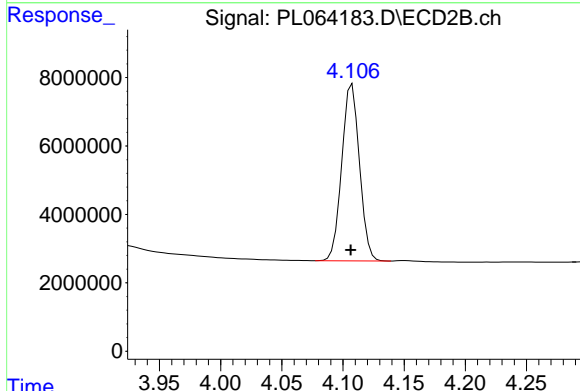




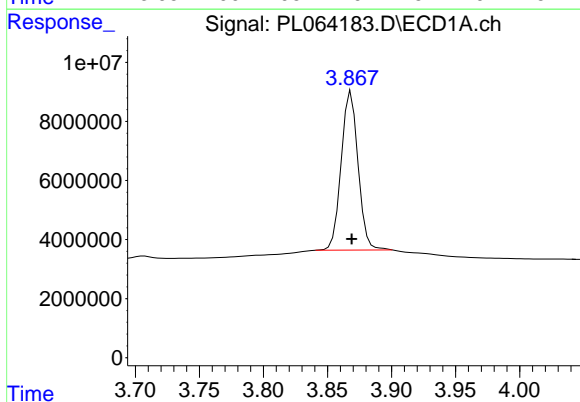
#1 Tetrachloro-m-xylene
 R.T.: 3.435 min
 Delta R.T.: 0.000 min
 Response: 64220851
 Conc: 21.42 ng/ml

Instrument :
 ECD_L
 ClientSampled :
 PEM

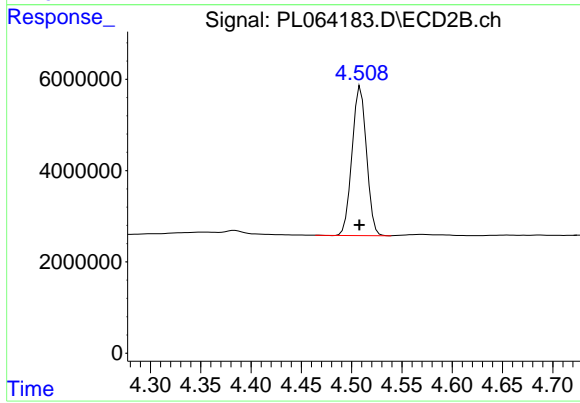
Manual Integrations
 APPROVED
 Ankita
 1/19/2021 12:10:40 PM



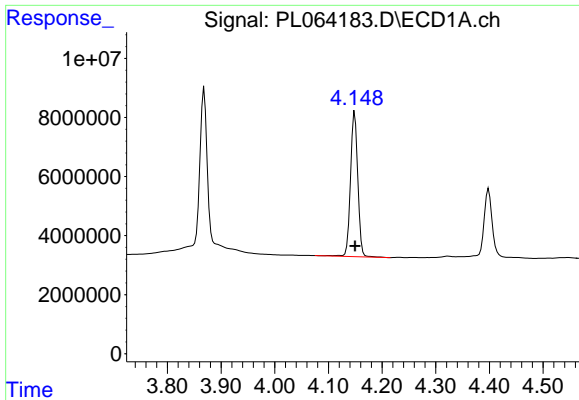
#1 Tetrachloro-m-xylene
 R.T.: 4.107 min
 Delta R.T.: 0.001 min
 Response: 52077845
 Conc: 20.37 ng/ml



#2 alpha-BHC
 R.T.: 3.869 min
 Delta R.T.: 0.000 min
 Response: 49260963
 Conc: 9.90 ng/ml



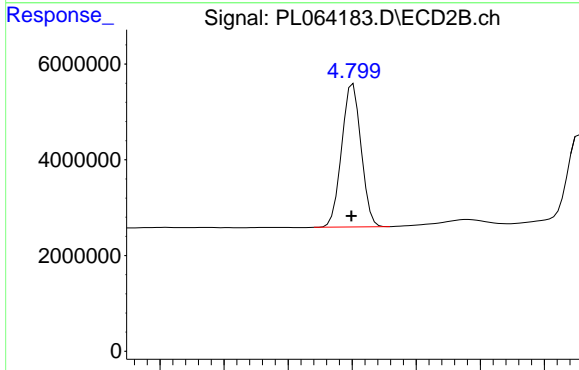
#2 alpha-BHC
 R.T.: 4.509 min
 Delta R.T.: 0.001 min
 Response: 32568727
 Conc: 8.91 ng/ml



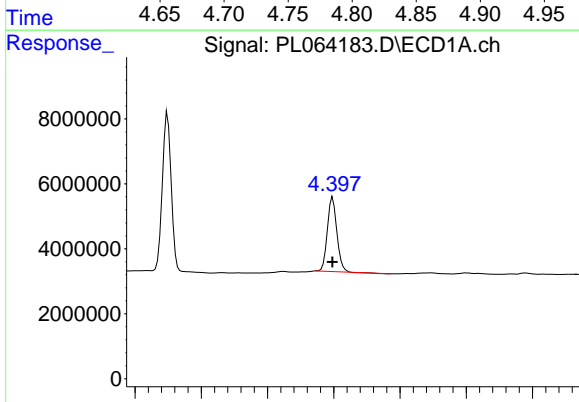
#3 gamma-BHC (Lindane)
 R.T.: 4.149 min
 Delta R.T.: 0.000 min
 Response: 46724633
 Conc: 10.08 ng/ml

Instrument :
 ECD_L
 ClientSampled :
 PEM

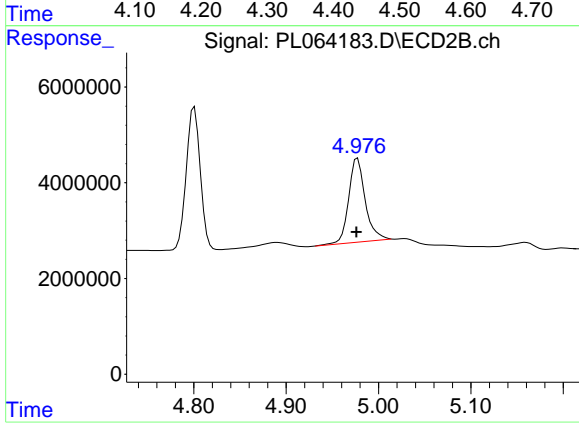
Manual Integrations
 APPROVED
 Ankita
 1/19/2021 12:10:40 PM



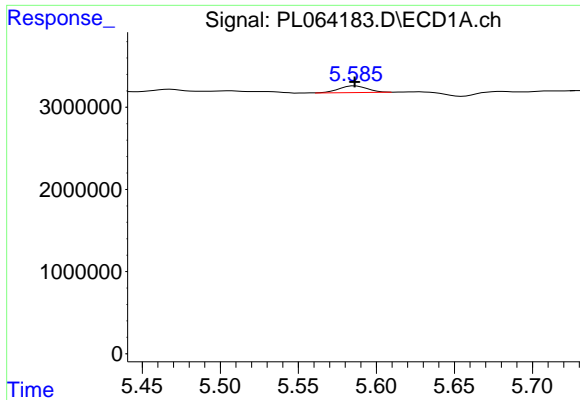
#3 gamma-BHC (Lindane)
 R.T.: 4.801 min
 Delta R.T.: 0.001 min
 Response: 31487847
 Conc: 8.94 ng/ml



#6 beta-BHC
 R.T.: 4.398 min
 Delta R.T.: 0.000 min
 Response: 22927932
 Conc: 9.90 ng/ml



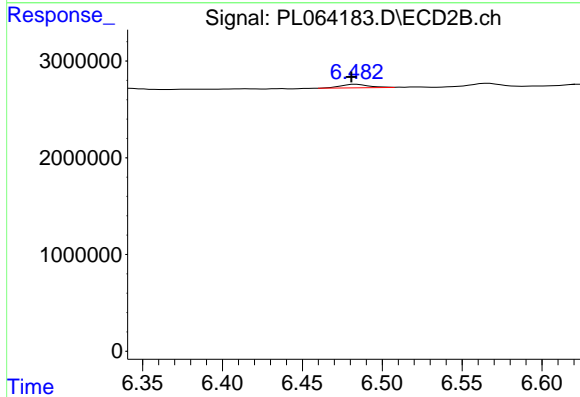
#6 beta-BHC
 R.T.: 4.977 min
 Delta R.T.: 0.001 min
 Response: 22117058
 Conc: 10.75 ng/ml



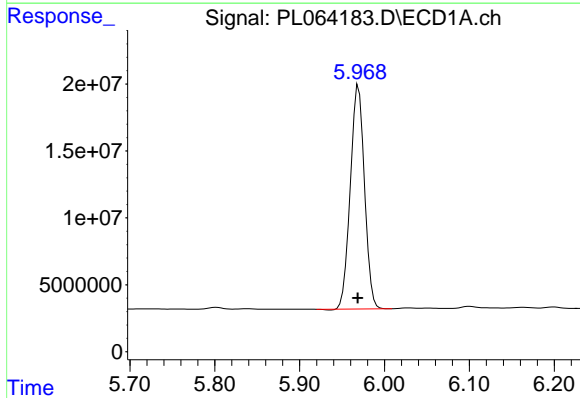
#12 4,4'-DDE
 R.T.: 5.585 min
 Delta R.T.: 0.000 min
 Response: 1037497
 Conc: 0.29 ng/ml m

Instrument :
 ECD_L
ClientSampled :
 PEM

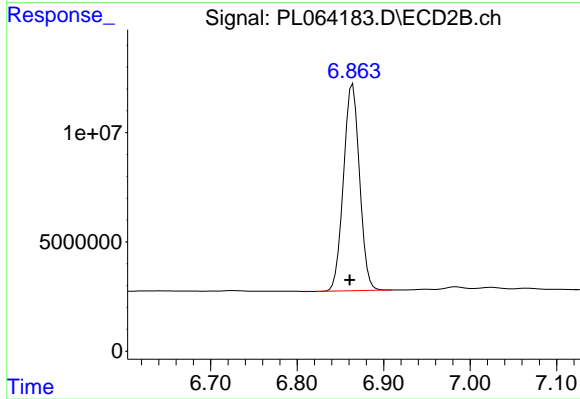
Manual Integrations
APPROVED
 Ankita
 1/19/2021 12:10:40 PM



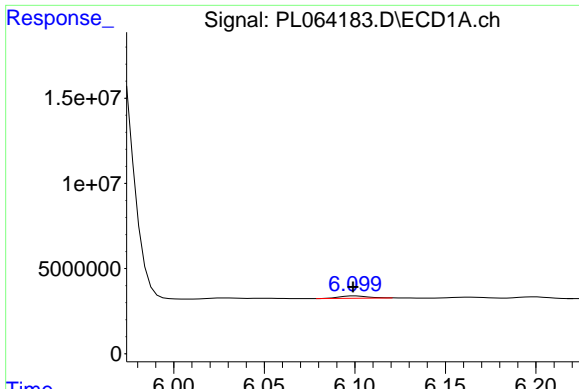
#12 4,4'-DDE
 R.T.: 6.482 min
 Delta R.T.: 0.002 min
 Response: 457278
 Conc: 0.17 ng/ml m



#14 Endrin
 R.T.: 5.970 min
 Delta R.T.: 0.000 min
 Response: 193830850
 Conc: 55.82 ng/ml



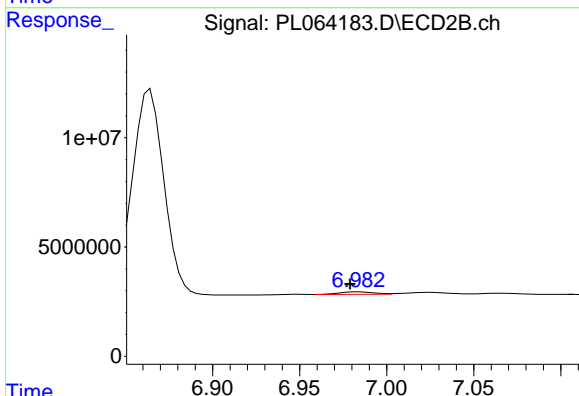
#14 Endrin
 R.T.: 6.864 min
 Delta R.T.: 0.003 min
 Response: 121106077
 Conc: 53.03 ng/ml



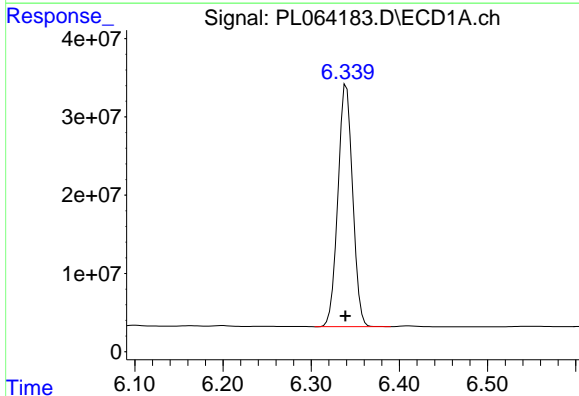
#16 4,4'-DDD
 R.T.: 6.099 min
 Delta R.T.: 0.000 min
 Response: 1516147
 Conc: 0.52 ng/ml m

Instrument :
 ECD_L
ClientSampled :
 PEM

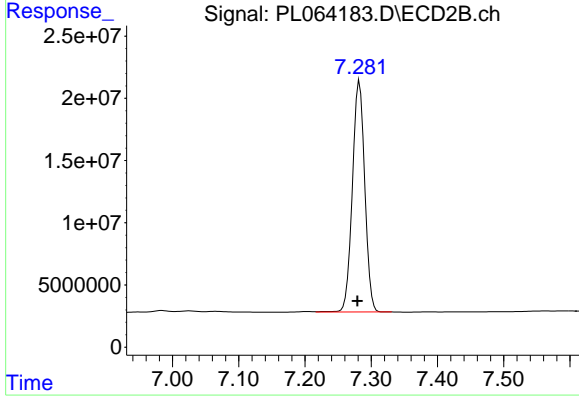
Manual Integrations
APPROVED
 Ankita
 1/19/2021 12:10:40 PM



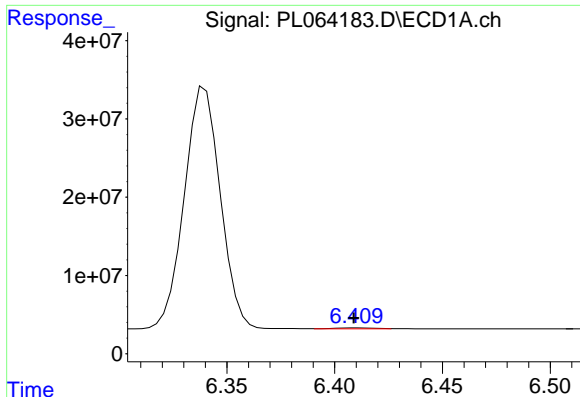
#16 4,4'-DDD
 R.T.: 6.982 min
 Delta R.T.: 0.003 min
 Response: 1666085
 Conc: 0.75 ng/ml m



#17 4,4'-DDT
 R.T.: 6.340 min
 Delta R.T.: 0.001 min
 Response: 358673425
 Conc: 120.14 ng/ml



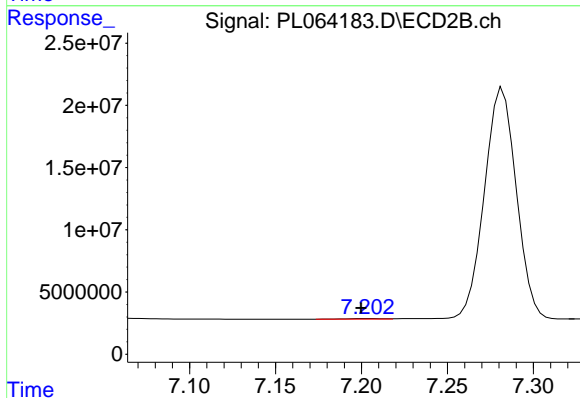
#17 4,4'-DDT
 R.T.: 7.282 min
 Delta R.T.: 0.003 min
 Response: 240947470
 Conc: 106.38 ng/ml



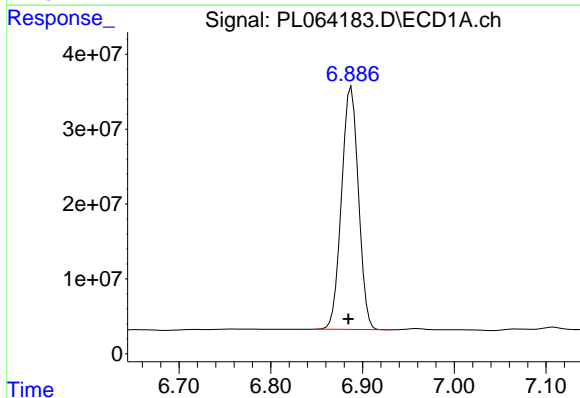
#18 Endrin aldehyde
 R.T.: 6.409 min
 Delta R.T.: 0.000 min
 Response: 1494231
 Conc: 0.52 ng/ml m

Instrument :
 ECD_L
 ClientSampled :
 PEM

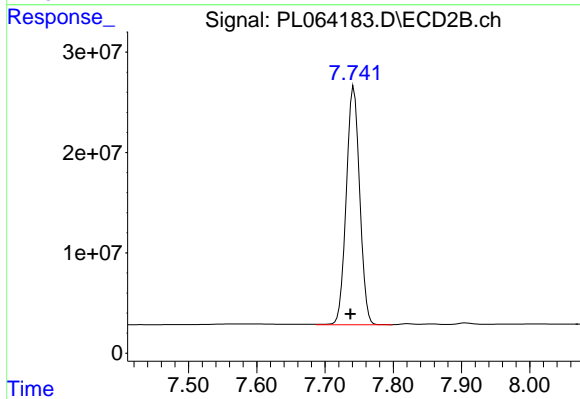
Manual Integrations
 APPROVED
 Ankita
 1/19/2021 12:10:40 PM



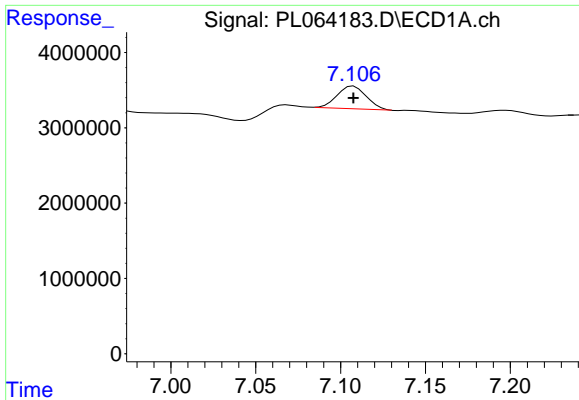
#18 Endrin aldehyde
 R.T.: 7.202 min
 Delta R.T.: 0.002 min
 Response: 824955
 Conc: 0.38 ng/ml m



#20 Methoxychlor
 R.T.: 6.888 min
 Delta R.T.: 0.003 min
 Response: 414771090
 Conc: 248.20 ng/ml



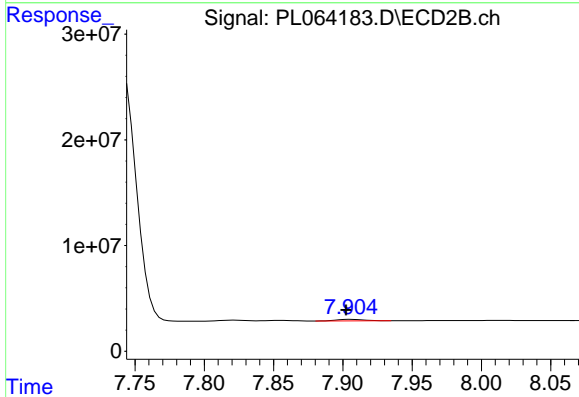
#20 Methoxychlor
 R.T.: 7.742 min
 Delta R.T.: 0.005 min
 Response: 324275374
 Conc: 240.00 ng/ml



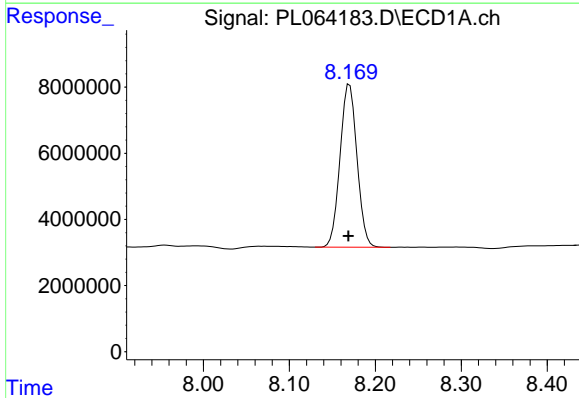
#21 Endrin ketone
 R.T.: 7.106 min
 Delta R.T.: -0.001 min
 Response: 3592951
 Conc: 1.00 ng/ml m

Instrument :
 ECD_L
 ClientSampled :
 PEM

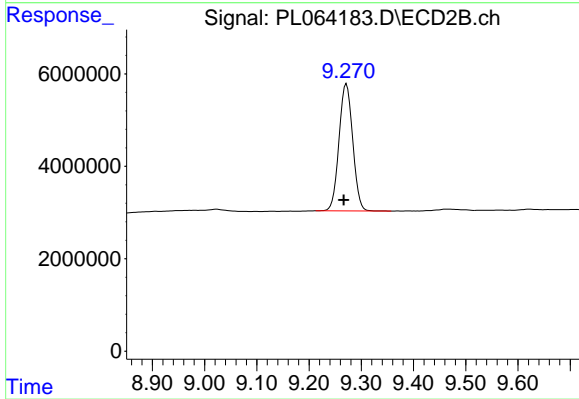
Manual Integrations
APPROVED
 Ankita
 1/19/2021 12:10:40 PM



#21 Endrin ketone
 R.T.: 7.906 min
 Delta R.T.: 0.003 min
 Response: 1973019
 Conc: 0.79 ng/ml



#28 Decachlorobiphenyl
 R.T.: 8.170 min
 Delta R.T.: 0.001 min
 Response: 67649149
 Conc: 22.17 ng/ml



#28 Decachlorobiphenyl
 R.T.: 9.272 min
 Delta R.T.: 0.005 min
 Response: 50142716
 Conc: 21.13 ng/ml