

Data Path : Z:\pestpcbsrv\HPCHEM1\ECD_L\Data\PL011921\
 Data File : PL064209.D
 Signal(s) : Signal #1: ECD1A.ch Signal #2: ECD2B.ch
 Acq On : 19 Jan 2021 10:53
 Operator : AR\AJ
 Sample : PCHLORCCC500
 Misc :
 ALS Vial : 5 Sample Multiplier: 1

Instrument :
 ECD_L
 ClientSampleId :
 PCHLORCCC500

Integration File signal 1: autoint1.e
 Integration File signal 2: autoint2.e
 Quant Time: Jan 20 00:42:14 2021
 Quant Method : Z:\pestpcbsrv\HPCHEM1\ECD_L\methods\PL011221.M
 Quant Title : GC Extractables
 QLast Update : Mon Jan 18 13:25:12 2021
 Response via : Initial Calibration
 Integrator: ChemStation

Volume Inj. : 1 µl
 Signal #1 Phase : ZB-MR2 Signal #2 Phase: ZB-MR1
 Signal #1 Info : 30M x 0.32mm x0.2 Signal #2 Info : 30M x 0.32mm x0.5µm

	Compound	RT#1	RT#2	Resp#1	Resp#2	ng/ml	ng/ml

System Monitoring Compounds							
1)	SA Tetrachlo...	3.440	4.108	176.3E6	123.2E6	58.796	48.177
28)	SA Decachlor...	8.173	9.270	137.0E6	103.8E6	44.902	43.736
Target Compounds							
23)	Chlordane-1	4.303	5.122	55062903	46587769	472.818	417.160
24)	Chlordane-2	4.802	5.598	62712687	52891965	445.595	417.197
25)	Chlordane-3	5.368	6.254	181.6E6	177.0E6	454.397	437.791
26)	Chlordane-4	5.426	6.328	146.5E6	215.5E6	445.121	435.891
27)	Chlordane-5	6.255	7.147	58250991	34425290	415.684	450.718

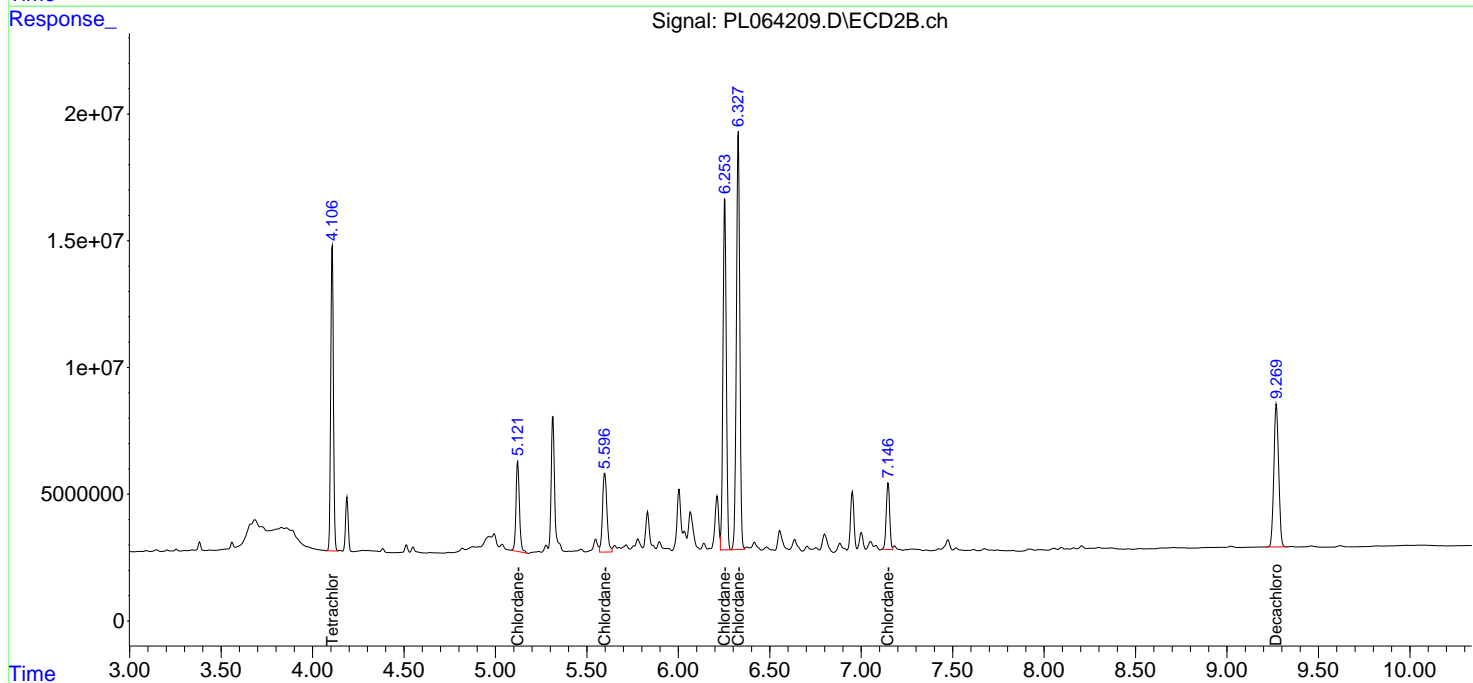
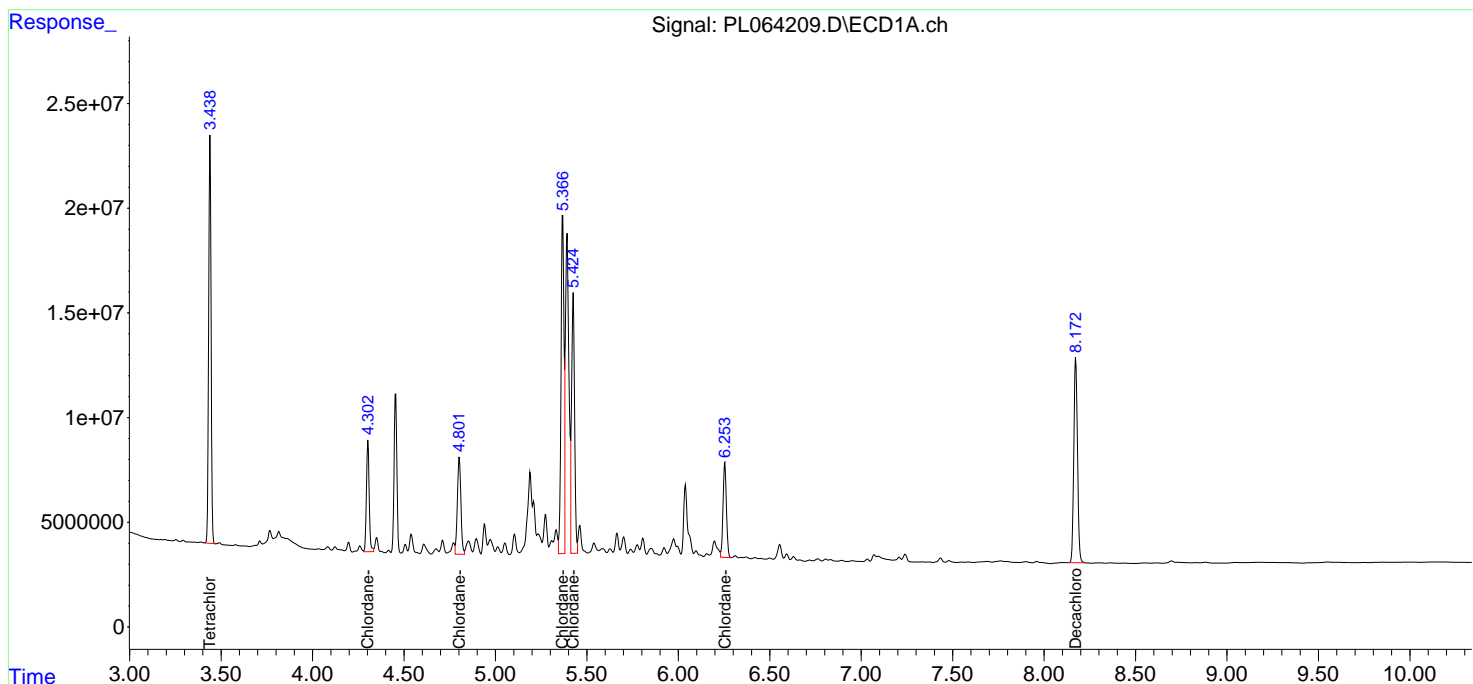
(f)=RT Delta > 1/2 Window (#)=Amounts differ by > 25% (m)=manual int.

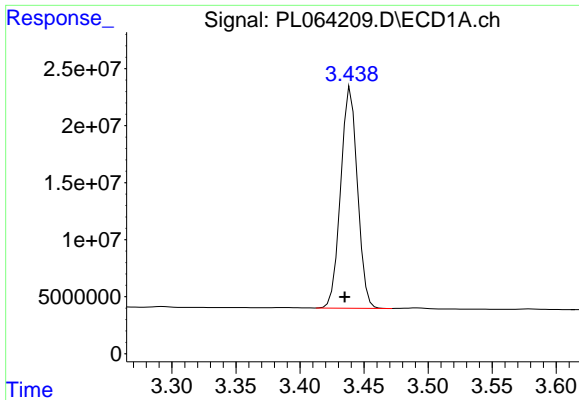
Data Path : Z:\pestpcbsrv\HPCHEM1\ECD_L\Data\PL011921\
 Data File : PL064209.D
 Signal(s) : Signal #1: ECD1A.ch Signal #2: ECD2B.ch
 Acq On : 19 Jan 2021 10:53
 Operator : AR\AJ
 Sample : PCHLORCCC500
 Misc :
 ALS Vial : 5 Sample Multiplier: 1

Instrument :
 ECD_L
 ClientSampled :
 PCHLORCCC500

Integration File signal 1: autoint1.e
 Integration File signal 2: autoint2.e
 Quant Time: Jan 20 00:42:14 2021
 Quant Method : Z:\pestpcbsrv\HPCHEM1\ECD_L\methods\PL011221.M
 Quant Title : GC Extractables
 QLast Update : Mon Jan 18 13:25:12 2021
 Response via : Initial Calibration
 Integrator: ChemStation

Volume Inj. : 1 µl
 Signal #1 Phase : ZB-MR2 Signal #2 Phase: ZB-MR1
 Signal #1 Info : 30M x 0.32mm x0.2 Signal #2 Info : 30M x 0.32mm x0.5µm

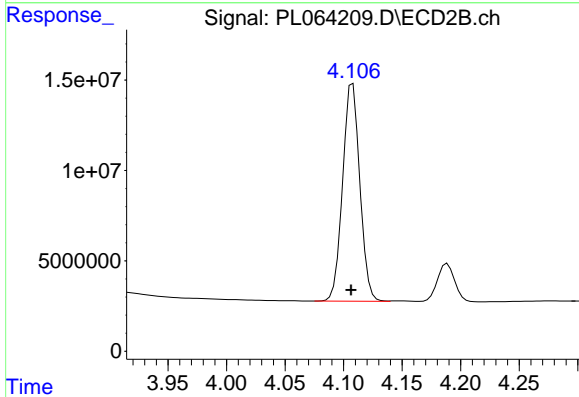




#1 Tetrachloro-m-xylene

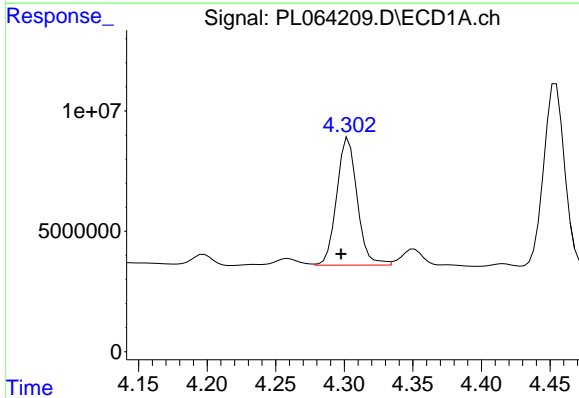
R.T.: 3.440 min
 Delta R.T.: 0.005 min
 Response: 176300124
 Conc: 58.80 ng/ml

Instrument :
 ECD_L
 ClientSampleId :
 PCHLORCCC500



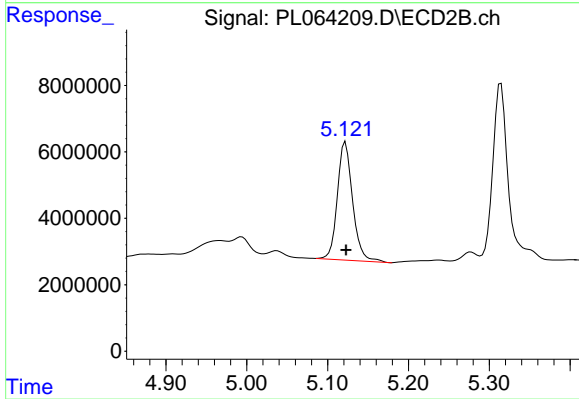
#1 Tetrachloro-m-xylene

R.T.: 4.108 min
 Delta R.T.: 0.001 min
 Response: 123161612
 Conc: 48.18 ng/ml



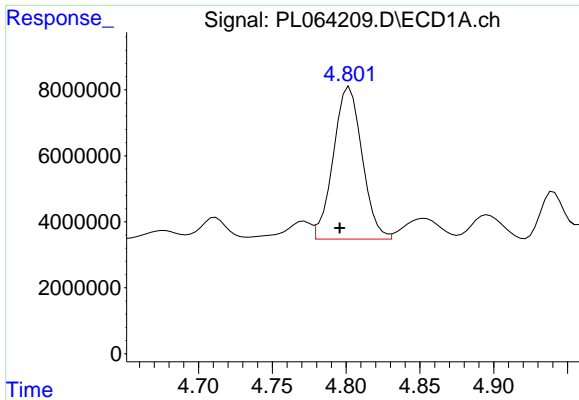
#23 Chlordane-1

R.T.: 4.303 min
 Delta R.T.: 0.005 min
 Response: 55062903
 Conc: 472.82 ng/ml



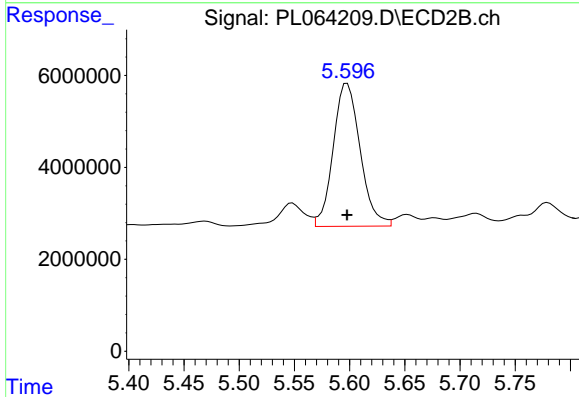
#23 Chlordane-1

R.T.: 5.122 min
 Delta R.T.: 0.000 min
 Response: 46587769
 Conc: 417.16 ng/ml

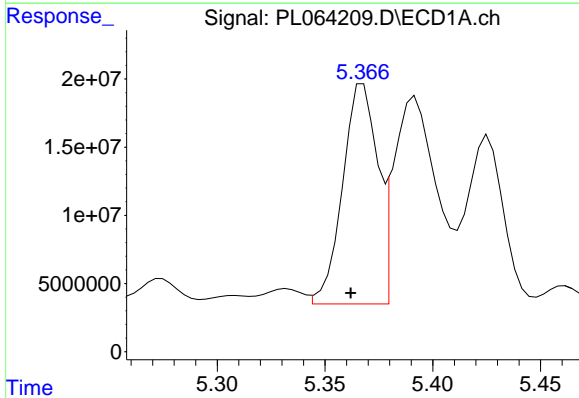


#24 Chlordane-2
R.T.: 4.802 min
Delta R.T.: 0.007 min
Response: 62712687
Conc: 445.60 ng/ml

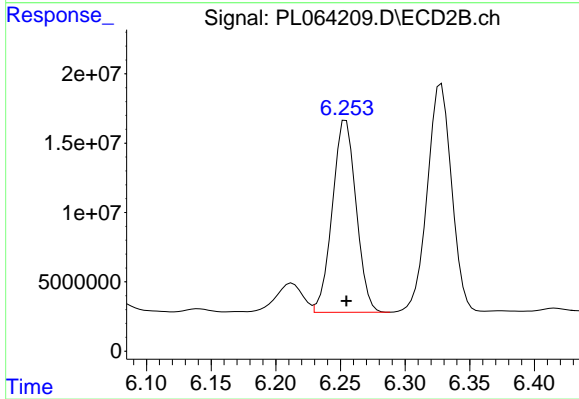
Instrument :
ECD_L
ClientSampleId :
PCHLORCCC500



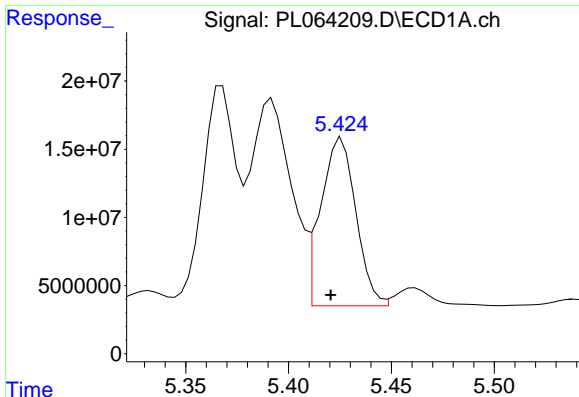
#24 Chlordane-2
R.T.: 5.598 min
Delta R.T.: 0.000 min
Response: 52891965
Conc: 417.20 ng/ml



#25 Chlordane-3
R.T.: 5.368 min
Delta R.T.: 0.006 min
Response: 181556855
Conc: 454.40 ng/ml



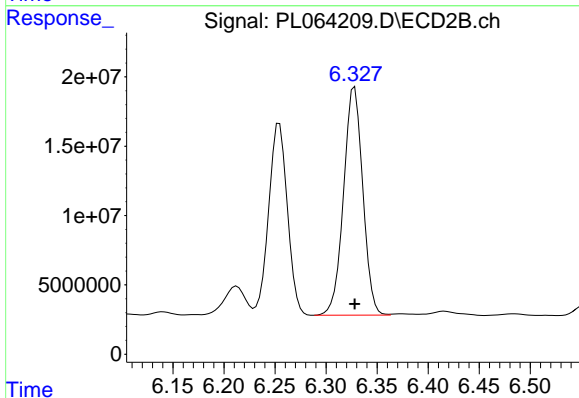
#25 Chlordane-3
R.T.: 6.254 min
Delta R.T.: 0.000 min
Response: 177014807
Conc: 437.79 ng/ml



#26 Chlordane-4

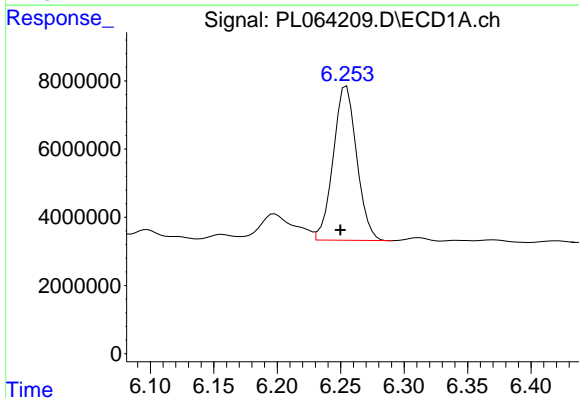
R.T.: 5.426 min
Delta R.T.: 0.005 min
Response: 146457776
Conc: 445.12 ng/ml

Instrument :
ECD_L
ClientSampleId :
PCHLORCCC500



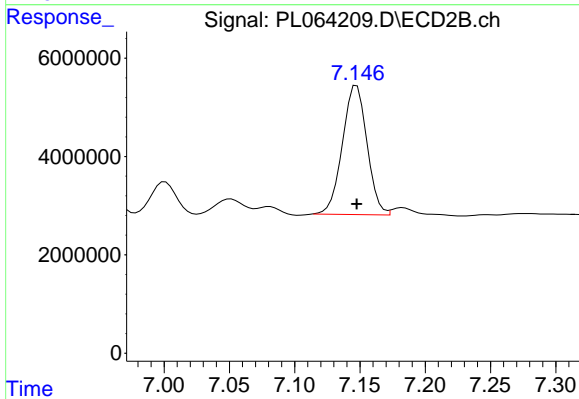
#26 Chlordane-4

R.T.: 6.328 min
Delta R.T.: 0.000 min
Response: 215454727
Conc: 435.89 ng/ml



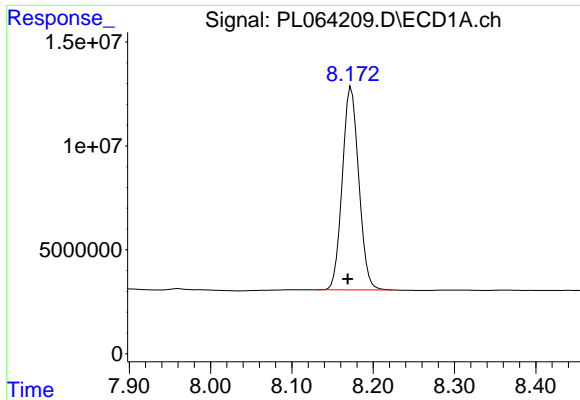
#27 Chlordane-5

R.T.: 6.255 min
Delta R.T.: 0.005 min
Response: 58250991
Conc: 415.68 ng/ml



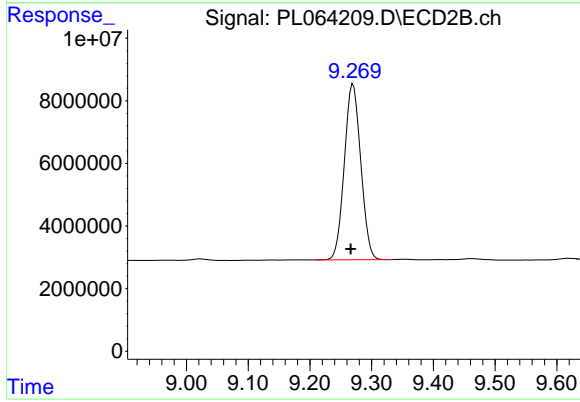
#27 Chlordane-5

R.T.: 7.147 min
Delta R.T.: 0.000 min
Response: 34425290
Conc: 450.72 ng/ml



#28 Decachlorobiphenyl
R.T.: 8.173 min
Delta R.T.: 0.004 min
Response: 137043827
Conc: 44.90 ng/ml

Instrument :
ECD_L
ClientSampleId :
PCHLORCCC500



#28 Decachlorobiphenyl
R.T.: 9.270 min
Delta R.T.: 0.004 min
Response: 103803788
Conc: 43.74 ng/ml