

Data Path : Z:\pestpcbsrv\HPCHEM1\ECD_L\Data\PL011921\
 Data File : PL064210.D
 Signal(s) : Signal #1: ECD1A.ch Signal #2: ECD2B.ch
 Acq On : 19 Jan 2021 11:09
 Operator : AR\AJ
 Sample : PTOXCCC500
 Misc :
 ALS Vial : 6 Sample Multiplier: 1

Instrument :
 ECD_L
 ClientSampleId :
 PTOXCCC500

Integration File signal 1: autoint1.e
 Integration File signal 2: autoint2.e
 Quant Time: Jan 20 06:31:00 2021
 Quant Method : Z:\pestpcbsrv\HPCHEM1\ECD_L\methods\LTX011221.M
 Quant Title : GC Extractables
 QLast Update : Mon Jan 18 13:43:30 2021
 Response via : Initial Calibration
 Integrator: ChemStation

Volume Inj. : 2 µl
 Signal #1 Phase : Rtx-CLPesticide 1 Signal #2 Phase: Rtx-CLPesticide 1
 Signal #1 Info : 30M x 0.32mm x0.3 Signal #2 Info : 30M x 0.32mm x 0.25µm

Compound	RT#1	RT#2	Resp#1	Resp#2	ng/ml	ng/ml

System Monitoring Compounds						
1) SA Tetrachlo...	3.438	4.108	156.9E6	130.4E6	58.704	56.748
7) SA Decachlor...	8.171	9.269	140.4E6	103.5E6	53.945	50.545
Target Compounds						
2) Toxaphene-1	5.680	6.731	10168597	9824005	529.110	536.302
3) Toxaphene-2	5.838	7.244	9048939	10309010	494.347	554.611
4) Toxaphene-3	6.277	7.318	28674699	18316999	540.830	545.227
5) Toxaphene-4	6.875	7.407	20633722	17784351	539.706	534.901
6) Toxaphene-5	7.005	7.828	29809596	13990334	497.443	517.727

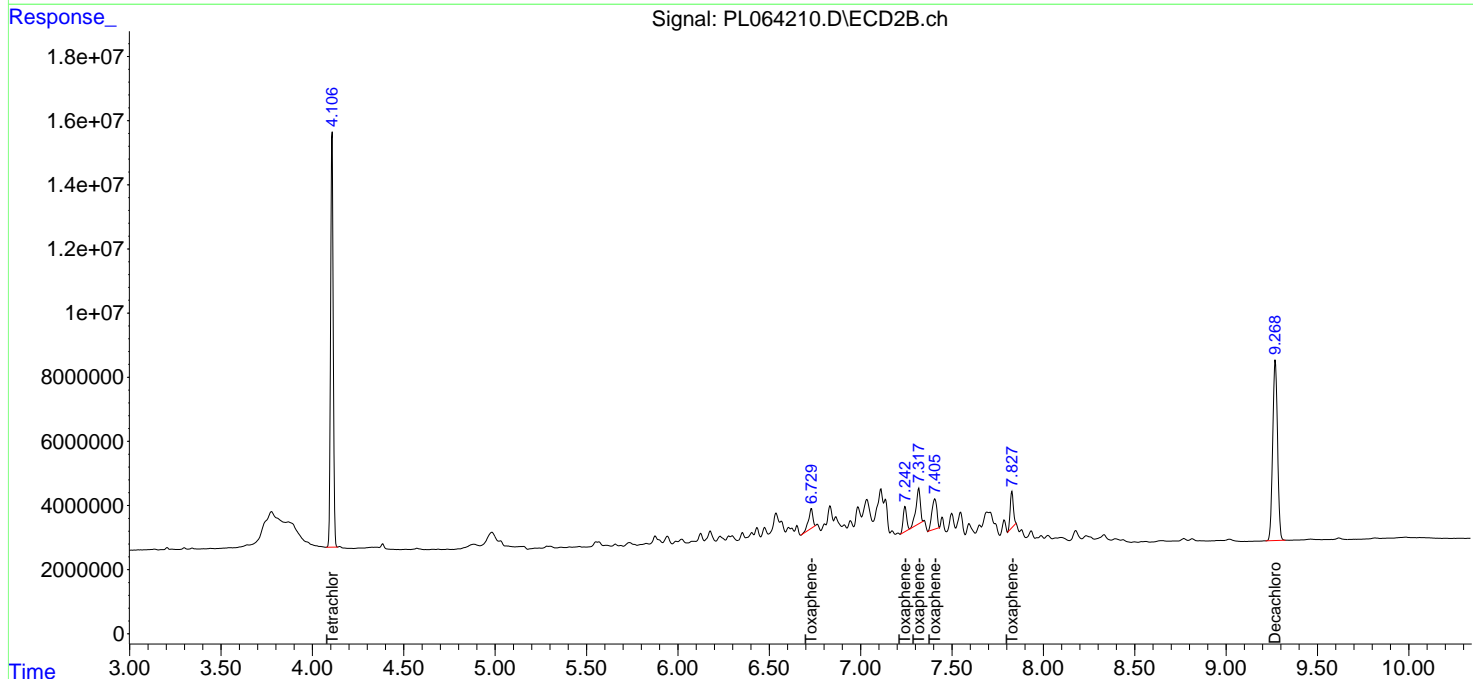
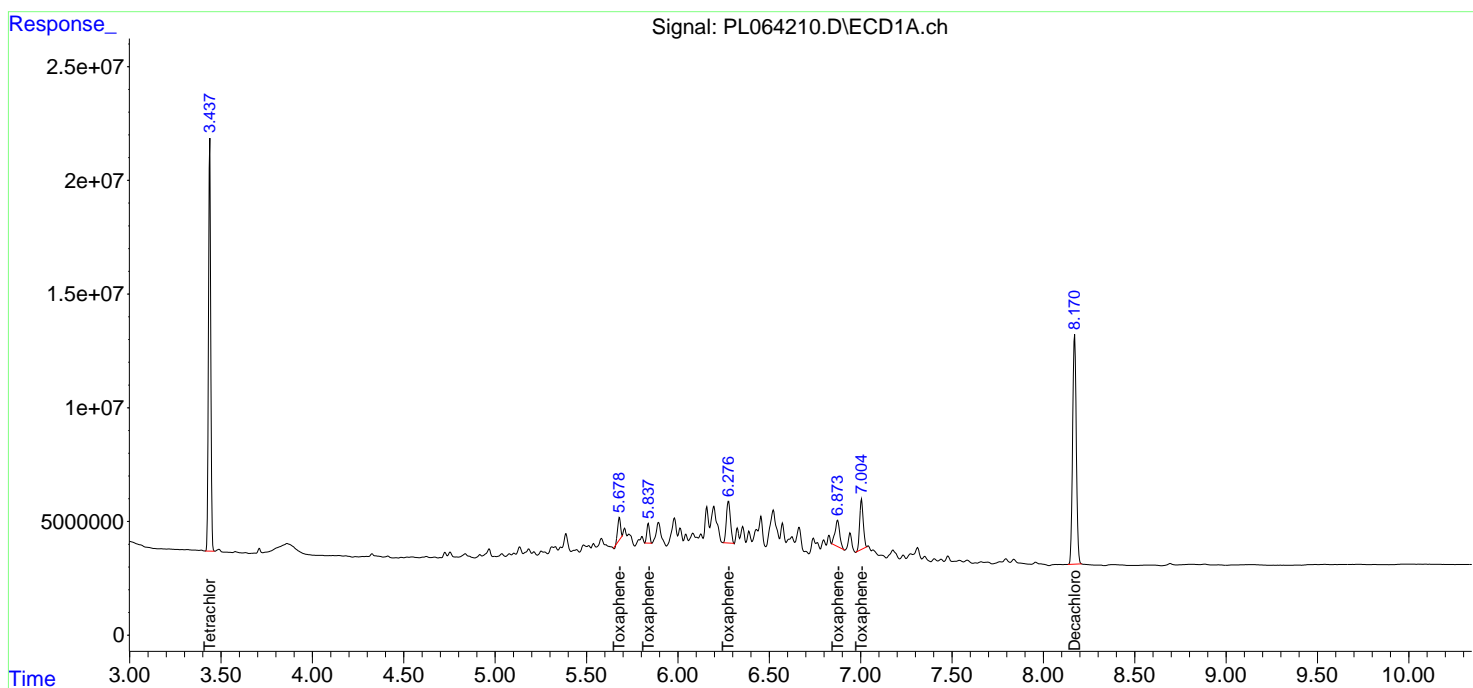
(f)=RT Delta > 1/2 Window (#)=Amounts differ by > 25% (m)=manual int.

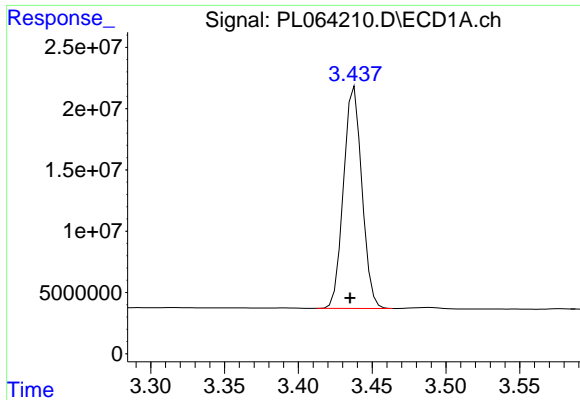
Data Path : Z:\pestpcbsrv\HPCHEM1\ECD_L\Data\PL011921\
 Data File : PL064210.D
 Signal(s) : Signal #1: ECD1A.ch Signal #2: ECD2B.ch
 Acq On : 19 Jan 2021 11:09
 Operator : AR\AJ
 Sample : PTOXCCC500
 Misc :
 ALS Vial : 6 Sample Multiplier: 1

Instrument :
 ECD_L
 ClientSampled :
 PTOXCCC500

Integration File signal 1: autoint1.e
 Integration File signal 2: autoint2.e
 Quant Time: Jan 20 06:31:00 2021
 Quant Method : Z:\pestpcbsrv\HPCHEM1\ECD_L\methods\LTX011221.M
 Quant Title : GC Extractables
 QLast Update : Mon Jan 18 13:43:30 2021
 Response via : Initial Calibration
 Integrator: ChemStation

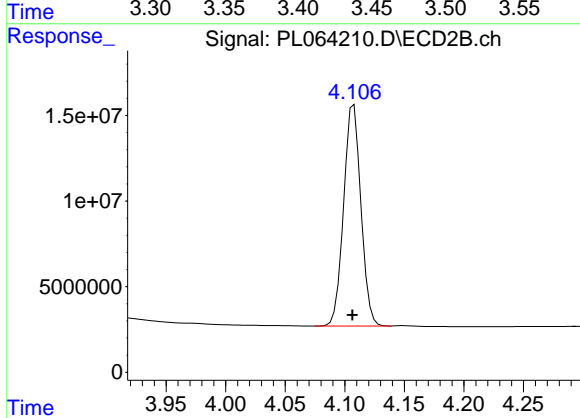
Volume Inj. : 2 µl
 Signal #1 Phase : Rtx-CLPesticide 1 Signal #2 Phase: Rtx-CLPesticide 1
 Signal #1 Info : 30M x 0.32mm x0.3 Signal #2 Info : 30M x 0.32mm x 0.25µm



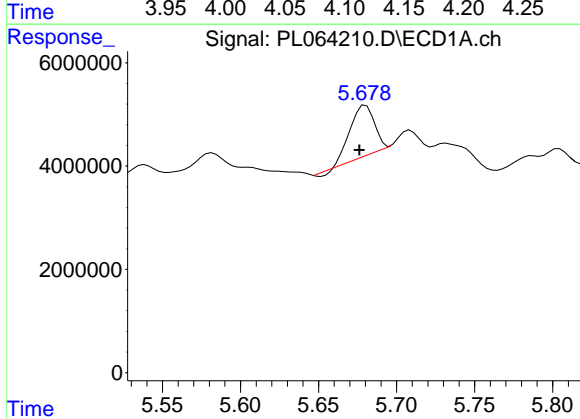


#1 Tetrachloro-m-xylene
 R.T.: 3.438 min
 Delta R.T.: 0.003 min
 Response: 156937333
 Conc: 58.70 ng/ml

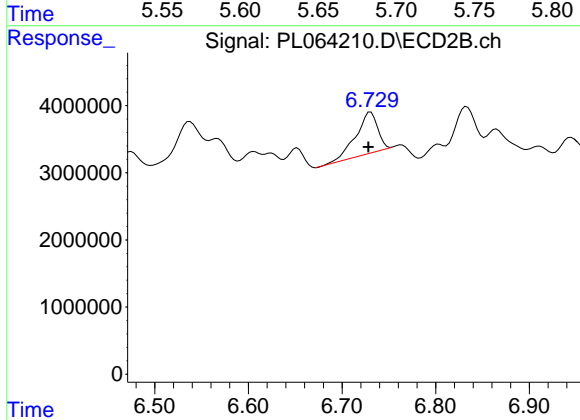
Instrument :
 ECD_L
 ClientSampleId :
 PTOXCCC500



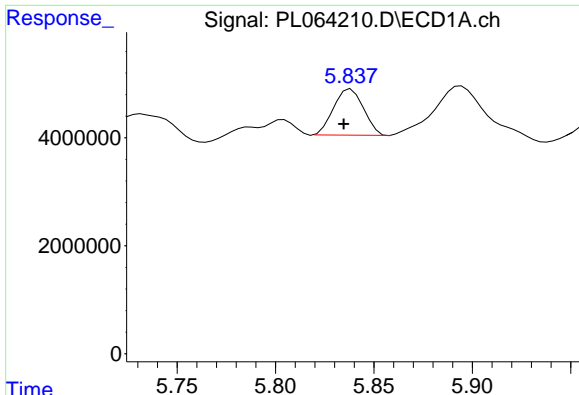
#1 Tetrachloro-m-xylene
 R.T.: 4.108 min
 Delta R.T.: 0.001 min
 Response: 130397874
 Conc: 56.75 ng/ml



#2 Toxaphene-1
 R.T.: 5.680 min
 Delta R.T.: 0.004 min
 Response: 10168597
 Conc: 529.11 ng/ml



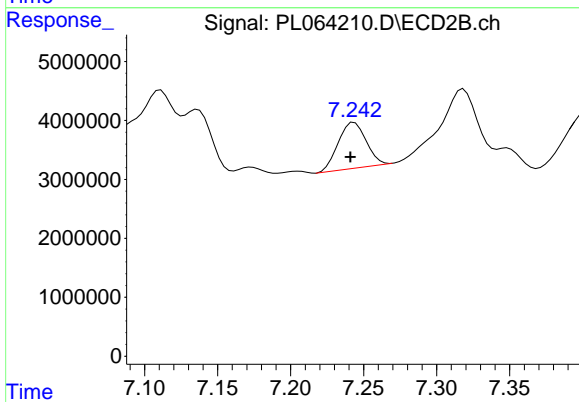
#2 Toxaphene-1
 R.T.: 6.731 min
 Delta R.T.: 0.002 min
 Response: 9824005
 Conc: 536.30 ng/ml



#3 Toxaphene-2

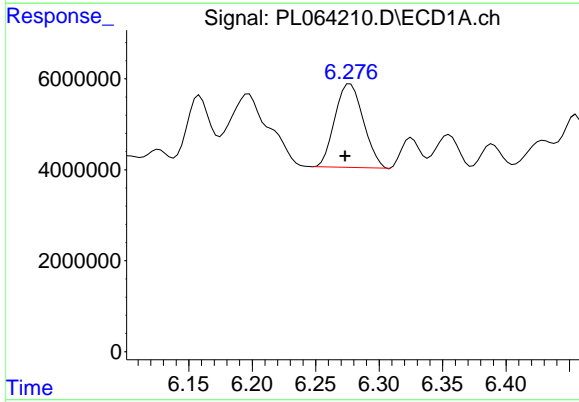
R.T.: 5.838 min
 Delta R.T.: 0.004 min
 Response: 9048939
 Conc: 494.35 ng/ml

Instrument :
 ECD_L
 ClientSampleId :
 PTOXCCC500



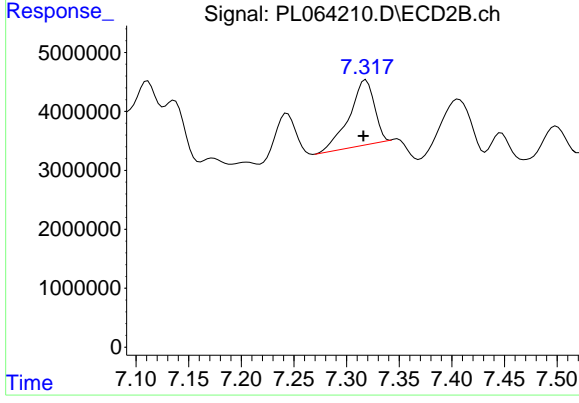
#3 Toxaphene-2

R.T.: 7.244 min
 Delta R.T.: 0.003 min
 Response: 10309010
 Conc: 554.61 ng/ml



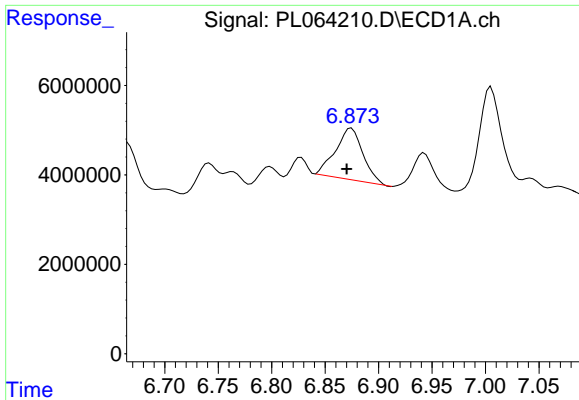
#4 Toxaphene-3

R.T.: 6.277 min
 Delta R.T.: 0.004 min
 Response: 28674699
 Conc: 540.83 ng/ml



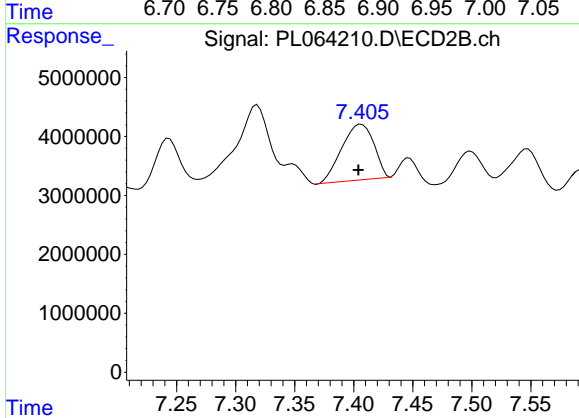
#4 Toxaphene-3

R.T.: 7.318 min
 Delta R.T.: 0.002 min
 Response: 18316999
 Conc: 545.23 ng/ml

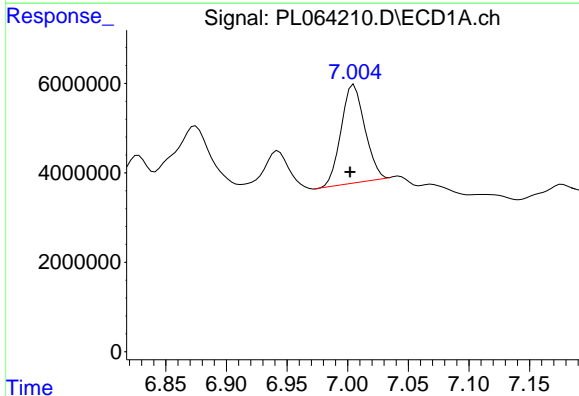


#5 Toxaphene-4
 R.T.: 6.875 min
 Delta R.T.: 0.004 min
 Response: 20633722
 Conc: 539.71 ng/ml

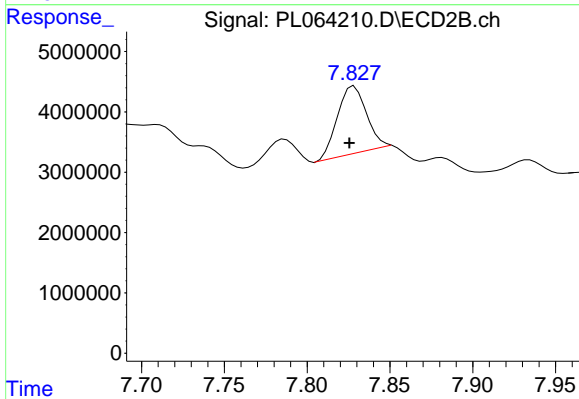
Instrument :
 ECD_L
 ClientSampleId :
 PTOXCCC500



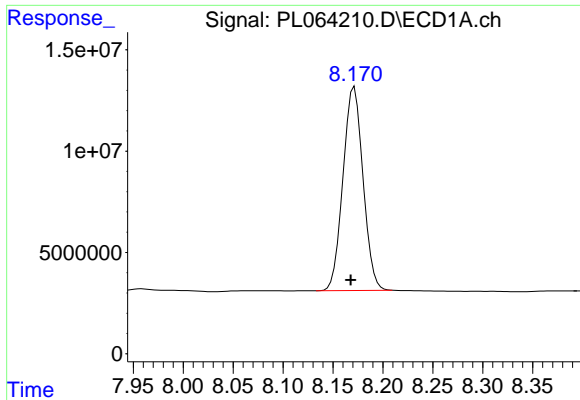
#5 Toxaphene-4
 R.T.: 7.407 min
 Delta R.T.: 0.003 min
 Response: 17784351
 Conc: 534.90 ng/ml



#6 Toxaphene-5
 R.T.: 7.005 min
 Delta R.T.: 0.003 min
 Response: 29809596
 Conc: 497.44 ng/ml



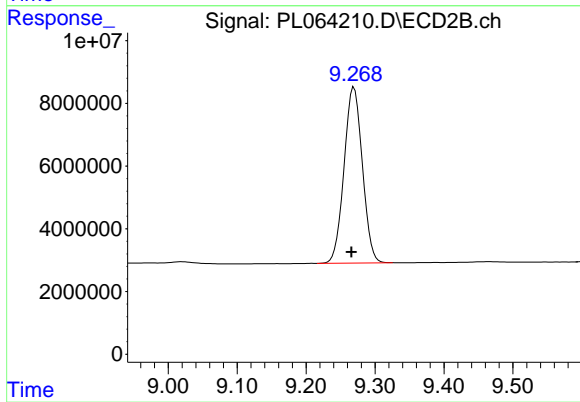
#6 Toxaphene-5
 R.T.: 7.828 min
 Delta R.T.: 0.003 min
 Response: 13990334
 Conc: 517.73 ng/ml



#7 Decachlorobiphenyl

R.T.: 8.171 min
Delta R.T.: 0.004 min
Response: 140390983
Conc: 53.95 ng/ml

Instrument :
ECD_L
ClientSampleId :
PTOXCCC500



#7 Decachlorobiphenyl

R.T.: 9.269 min
Delta R.T.: 0.004 min
Response: 103527492
Conc: 50.54 ng/ml