

Data Path : Z:\pestpcbsrv\HPCHEM1\ECD_L\Data\PL011921\
 Data File : PL064211.D
 Signal(s) : Signal #1: ECD1A.ch Signal #2: ECD2B.ch
 Acq On : 19 Jan 2021 11:29
 Operator : AR\AJ
 Sample : PB134192BL
 Misc :
 ALS Vial : 7 Sample Multiplier: 1

Instrument :
 ECD_L
 ClientSampleId :
 PB134192BL

Integration File signal 1: autoint1.e
 Integration File signal 2: autoint2.e
 Quant Time: Jan 20 00:43:05 2021
 Quant Method : Z:\pestpcbsrv\HPCHEM1\ECD_L\methods\PL011221.M
 Quant Title : GC Extractables
 QLast Update : Mon Jan 18 13:25:12 2021
 Response via : Initial Calibration
 Integrator: ChemStation

Volume Inj. : 1 µl
 Signal #1 Phase : ZB-MR2 Signal #2 Phase: ZB-MR1
 Signal #1 Info : 30M x 0.32mm x0.2 Signal #2 Info : 30M x 0.32mm x0.5µm

| Compound | RT#1 | RT#2 | Resp#1 | Resp#2 | ng/ml | ng/ml |
|-----------------------------|-------|-------|----------|----------|--------|--------|
| ----- | | | | | | |
| System Monitoring Compounds | | | | | | |
| 1) SA Tetrachlo... | 3.440 | 4.108 | 64562757 | 53298118 | 21.532 | 20.848 |
| 28) SA Decachlor... | 8.173 | 9.271 | 60114462 | 44575545 | 19.696 | 18.781 |

Target Compounds

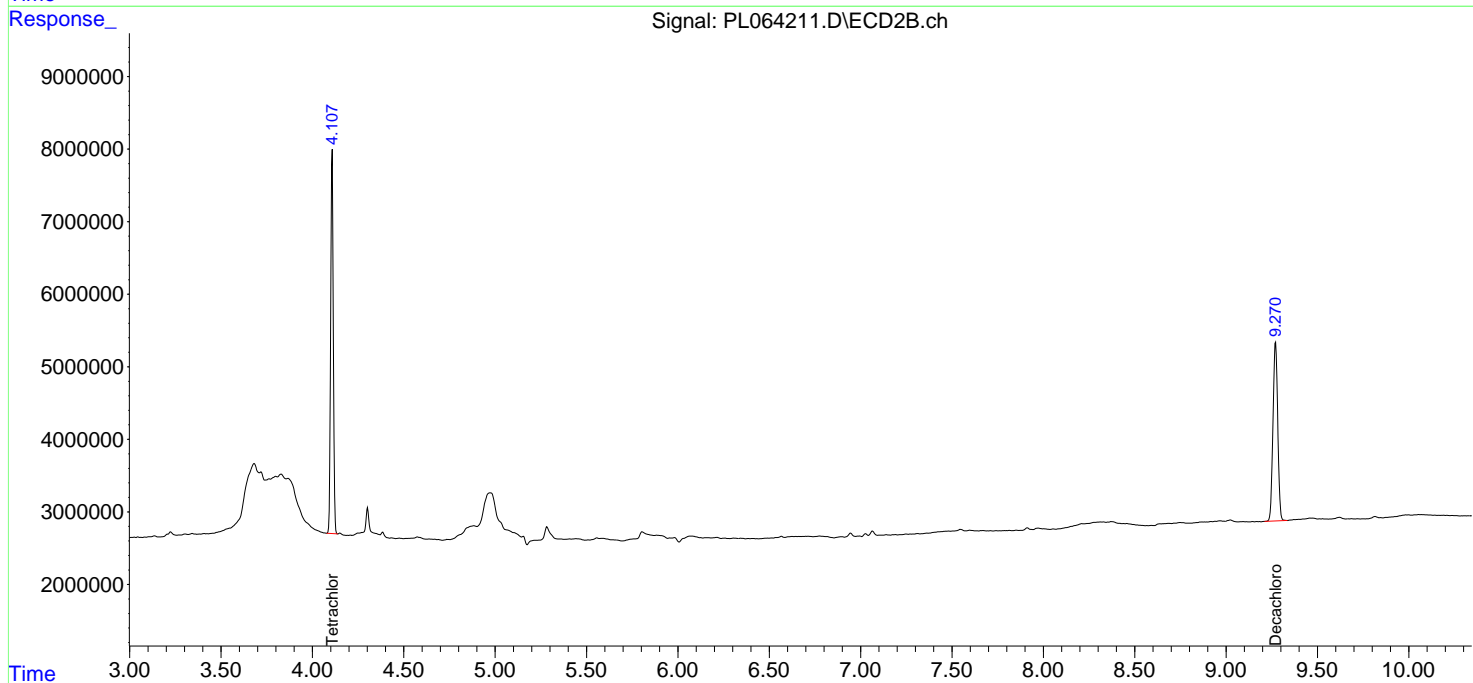
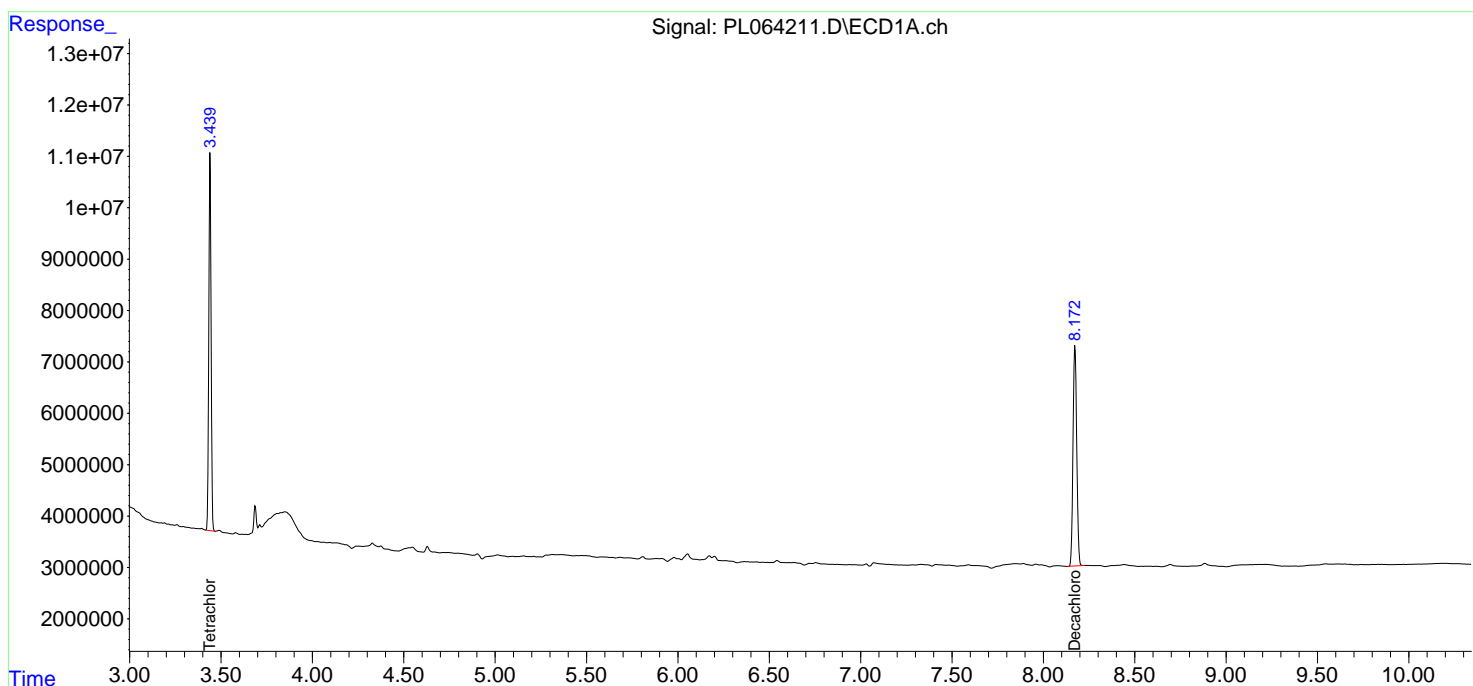
 (f)=RT Delta > 1/2 Window (#)=Amounts differ by > 25% (m)=manual int.

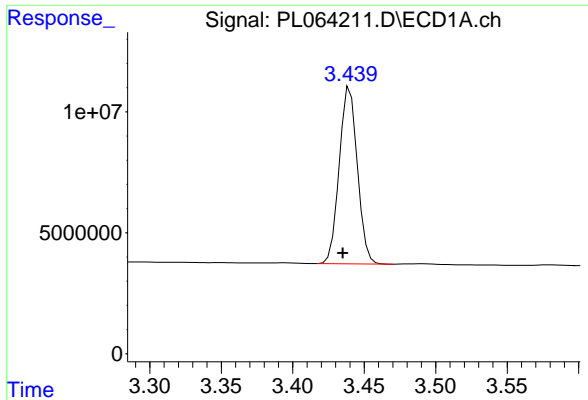
Data Path : Z:\pestpcbsrv\HPCHEM1\ECD_L\Data\PL011921\
 Data File : PL064211.D
 Signal(s) : Signal #1: ECD1A.ch Signal #2: ECD2B.ch
 Acq On : 19 Jan 2021 11:29
 Operator : AR\AJ
 Sample : PB134192BL
 Misc :
 ALS Vial : 7 Sample Multiplier: 1

Instrument :
 ECD_L
 ClientSampled :
 PB134192BL

Integration File signal 1: autoint1.e
 Integration File signal 2: autoint2.e
 Quant Time: Jan 20 00:43:05 2021
 Quant Method : Z:\pestpcbsrv\HPCHEM1\ECD_L\methods\PL011221.M
 Quant Title : GC Extractables
 QLast Update : Mon Jan 18 13:25:12 2021
 Response via : Initial Calibration
 Integrator: ChemStation

Volume Inj. : 1 µl
 Signal #1 Phase : ZB-MR2 Signal #2 Phase: ZB-MR1
 Signal #1 Info : 30M x 0.32mm x0.2 Signal #2 Info : 30M x 0.32mm x0.5µm

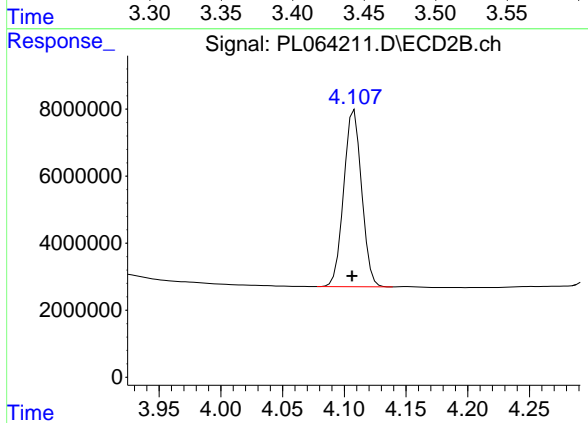




#1 Tetrachloro-m-xylene

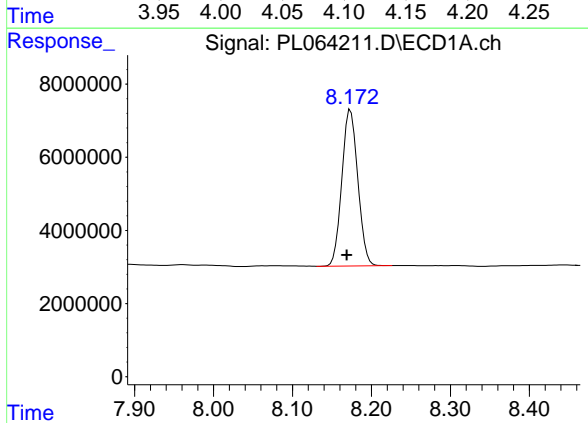
R.T.: 3.440 min
 Delta R.T.: 0.005 min
 Response: 64562757
 Conc: 21.53 ng/ml

Instrument :
 ECD_L
 ClientSampled :
 PB134192BL



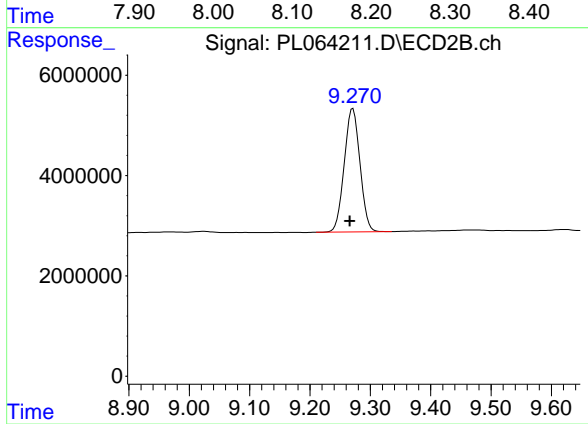
#1 Tetrachloro-m-xylene

R.T.: 4.108 min
 Delta R.T.: 0.002 min
 Response: 53298118
 Conc: 20.85 ng/ml



#28 Decachlorobiphenyl

R.T.: 8.173 min
 Delta R.T.: 0.005 min
 Response: 60114462
 Conc: 19.70 ng/ml



#28 Decachlorobiphenyl

R.T.: 9.271 min
 Delta R.T.: 0.005 min
 Response: 44575545
 Conc: 18.78 ng/ml