

Data Path : Z:\pestpcbsrv\HPCHEM1\ECD\_L\Data\PL011921\  
 Data File : PL064220.D  
 Signal(s) : Signal #1: ECD1A.ch Signal #2: ECD2B.ch  
 Acq On : 19 Jan 2021 14:02  
 Operator : AR\AJ  
 Sample : PEM  
 Misc :  
 ALS Vial : 3 Sample Multiplier: 1

Instrument :  
 ECD\_L  
 ClientSampled :  
 PEM

Manual Integrations  
 APPROVED

Ankita  
 1/20/2021 11:35:26 AM

Integration File signal 1: autoint1.e  
 Integration File signal 2: autoint2.e  
 Quant Time: Jan 20 00:45:55 2021  
 Quant Method : Z:\pestpcbsrv\HPCHEM1\ECD\_L\methods\PL011221.M  
 Quant Title : GC Extractables  
 QLast Update : Mon Jan 18 13:25:12 2021  
 Response via : Initial Calibration  
 Integrator: ChemStation

Volume Inj. : 1 µl  
 Signal #1 Phase : ZB-MR2 Signal #2 Phase: ZB-MR1  
 Signal #1 Info : 30M x 0.32mm x0.2 Signal #2 Info : 30M x 0.32mm x0.5µm

Compound	RT#1	RT#2	Resp#1	Resp#2	ng/ml	ng/ml
-----						
System Monitoring Compounds						
1) SA Tetrachlo...	3.434	4.107	63217254	51250341	21.083	20.047
28) SA Decachlor...	8.166	9.268	60787650	45307581	19.917	19.090
Target Compounds						
2) A alpha-BHC	3.868	4.508	46997739	31938473	9.449	8.739
3) MA gamma-BHC...	4.148	4.800	43378613	30472958	9.356	8.651
6) B beta-BHC	4.398	4.976	21204266	21597868	8.918	10.404
12) B 4,4'-DDE	5.583	6.480	1107242	458642	0.314m	0.172m#
14) MA Endrin	5.966	6.862	172.3E6	112.0E6	49.612	49.058
16) A 4,4'-DDD	6.096	6.980	6988789	4684408	2.396	2.113
17) MA 4,4'-DDT	6.337	7.280	309.0E6	217.4E6	103.508	96.006
18) B Endrin al...	6.407	7.200	2029343	654706	0.707	0.302m#
20) A Methoxychlor	6.883	7.740	376.2E6	294.9E6	225.093	218.286
21) B Endrin ke...	7.104	7.903	6463011	3459673	1.800	1.387
-----						

(f)=RT Delta > 1/2 Window (#)=Amounts differ by > 25% (m)=manual int.

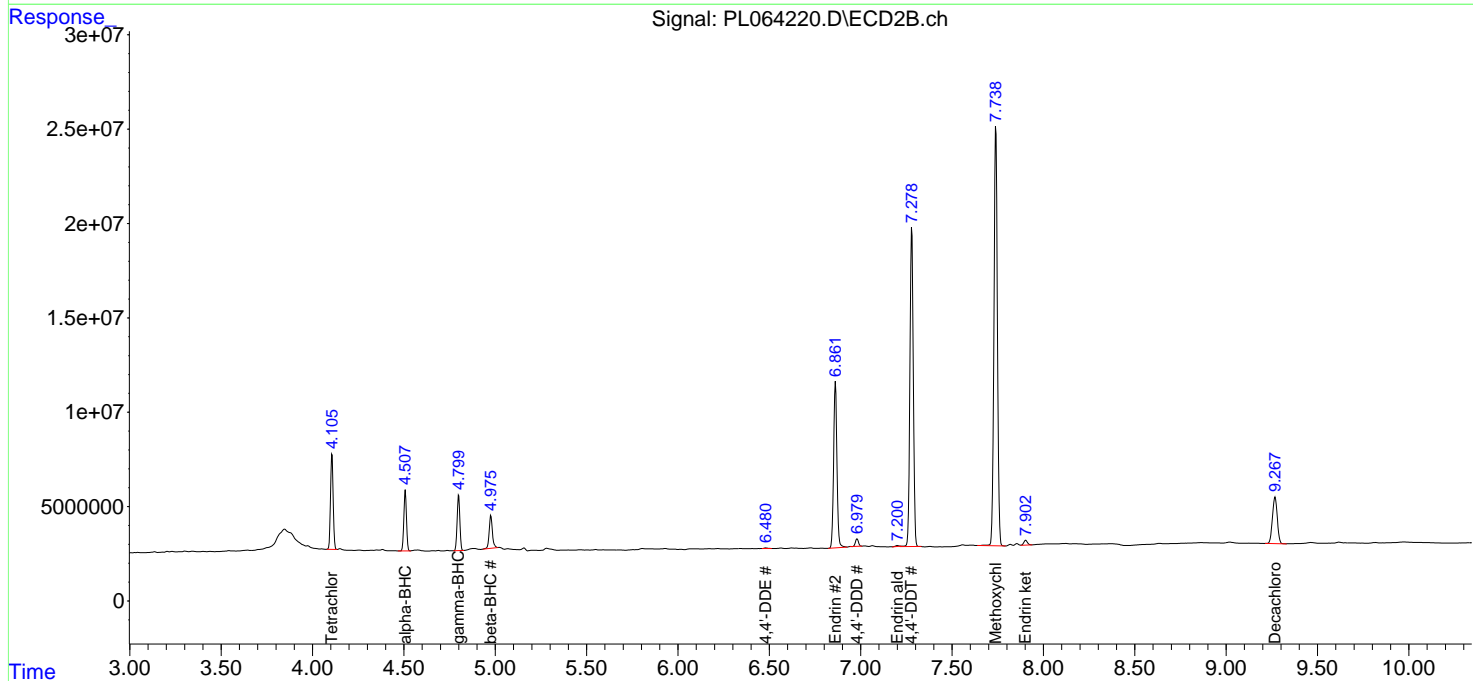
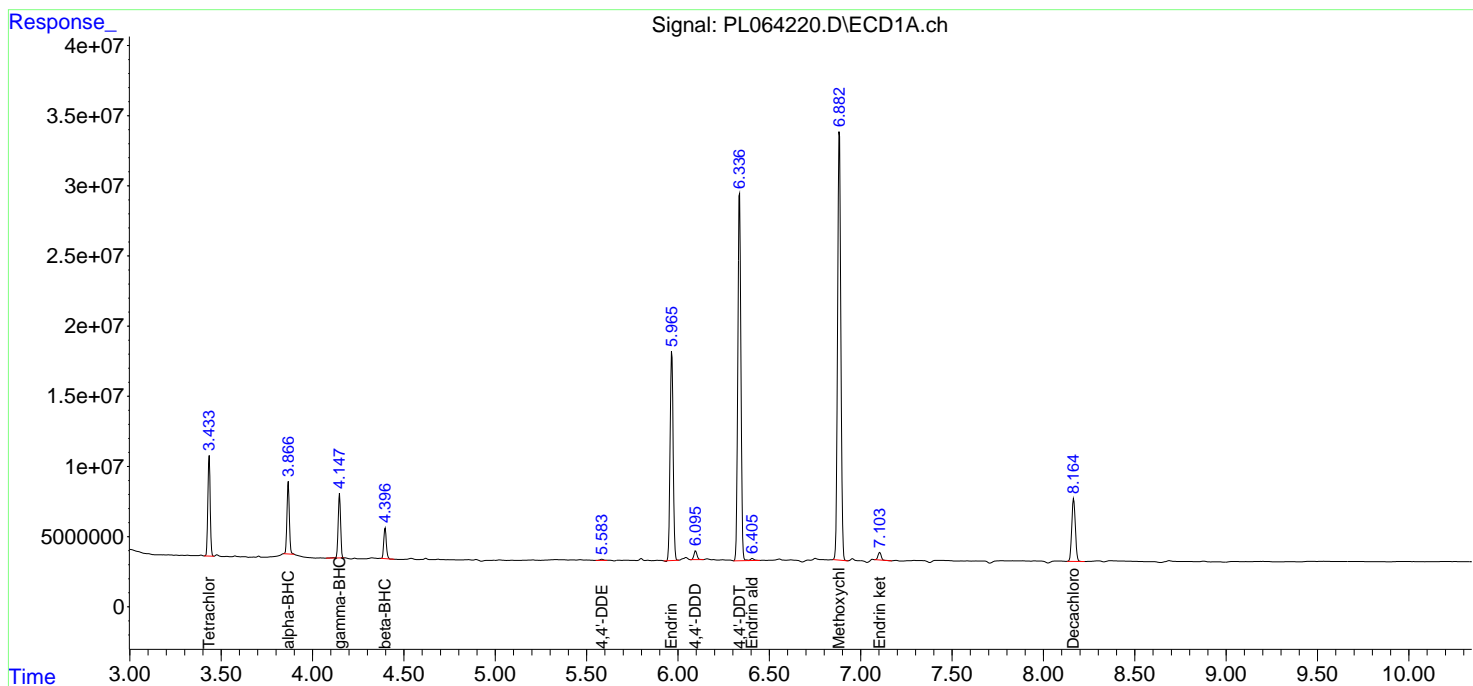
Data Path : Z:\pestpcbsrv\HPCHEM1\ECD\_L\Data\PL011921\  
 Data File : PL064220.D  
 Signal(s) : Signal #1: ECD1A.ch Signal #2: ECD2B.ch  
 Acq On : 19 Jan 2021 14:02  
 Operator : AR\AJ  
 Sample : PEM  
 Misc :  
 ALS Vial : 3 Sample Multiplier: 1

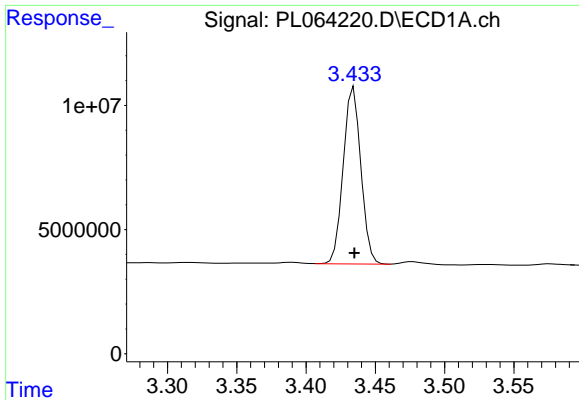
Instrument :  
 ECD\_L  
 ClientSampled :  
 PEM

Manual Integrations  
**APPROVED**  
 Ankita  
 1/20/2021 11:35:26 AM

Integration File signal 1: autoint1.e  
 Integration File signal 2: autoint2.e  
 Quant Time: Jan 20 00:45:55 2021  
 Quant Method : Z:\pestpcbsrv\HPCHEM1\ECD\_L\methods\PL011221.M  
 Quant Title : GC Extractables  
 QLast Update : Mon Jan 18 13:25:12 2021  
 Response via : Initial Calibration  
 Integrator: ChemStation

Volume Inj. : 1 µl  
 Signal #1 Phase : ZB-MR2 Signal #2 Phase: ZB-MR1  
 Signal #1 Info : 30M x 0.32mm x0.2 Signal #2 Info : 30M x 0.32mm x0.5µm

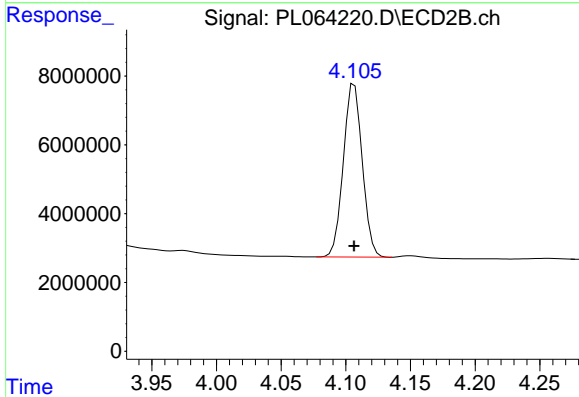




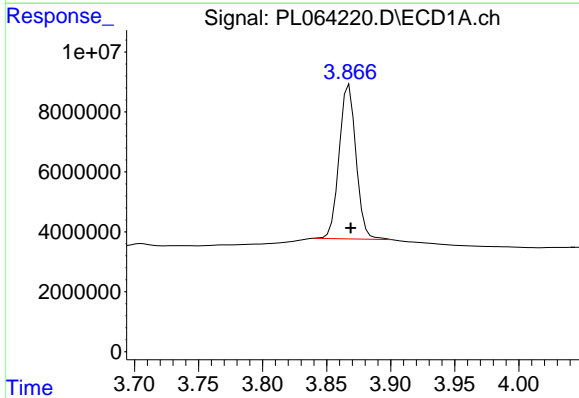
#1 Tetrachloro-m-xylene  
 R.T.: 3.434 min  
 Delta R.T.: 0.000 min  
 Response: 63217254  
 Conc: 21.08 ng/ml

Instrument :  
 ECD\_L  
 ClientSampled :  
 PEM

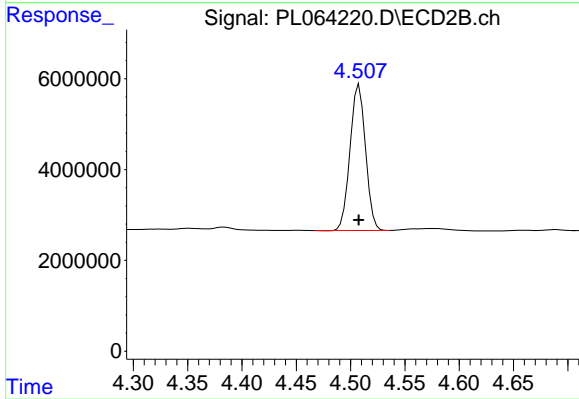
Manual Integrations  
 APPROVED  
 Ankita  
 1/20/2021 11:35:26 AM



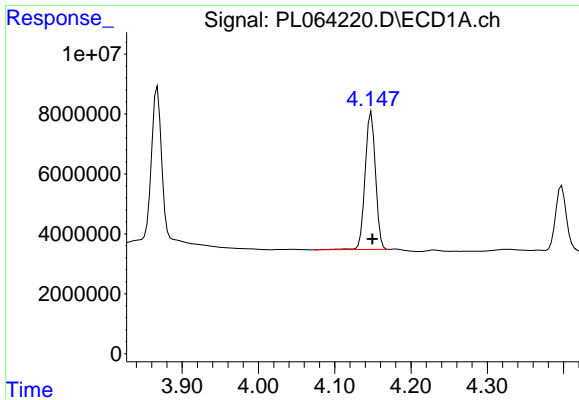
#1 Tetrachloro-m-xylene  
 R.T.: 4.107 min  
 Delta R.T.: 0.000 min  
 Response: 51250341  
 Conc: 20.05 ng/ml



#2 alpha-BHC  
 R.T.: 3.868 min  
 Delta R.T.: -0.001 min  
 Response: 46997739  
 Conc: 9.45 ng/ml



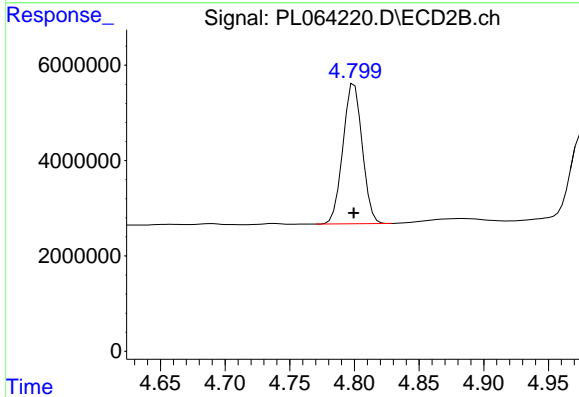
#2 alpha-BHC  
 R.T.: 4.508 min  
 Delta R.T.: 0.000 min  
 Response: 31938473  
 Conc: 8.74 ng/ml



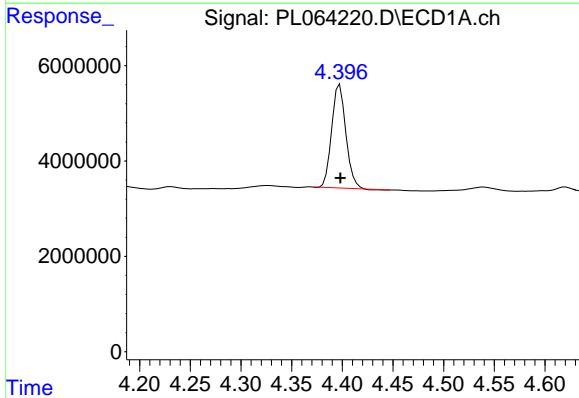
#3 gamma-BHC (Lindane)  
 R.T.: 4.148 min  
 Delta R.T.: -0.002 min  
 Response: 43378613  
 Conc: 9.36 ng/ml

Instrument :  
 ECD\_L  
 ClientSampled :  
 PEM

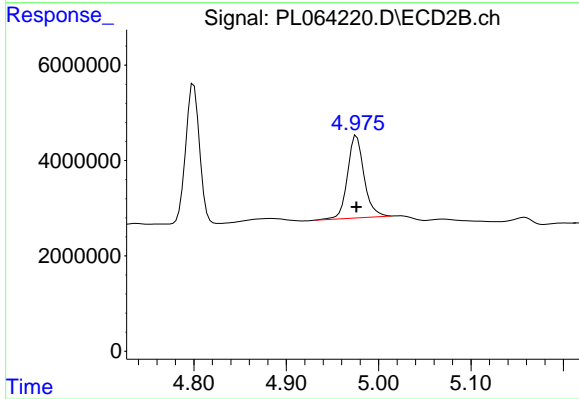
Manual Integrations  
 APPROVED  
 Ankita  
 1/20/2021 11:35:26 AM



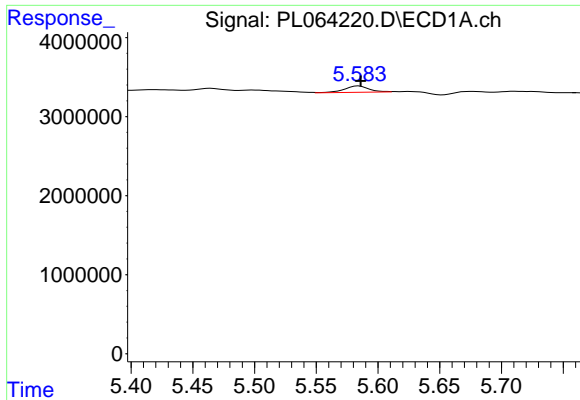
#3 gamma-BHC (Lindane)  
 R.T.: 4.800 min  
 Delta R.T.: 0.000 min  
 Response: 30472958  
 Conc: 8.65 ng/ml



#6 beta-BHC  
 R.T.: 4.398 min  
 Delta R.T.: 0.000 min  
 Response: 21204266  
 Conc: 8.92 ng/ml



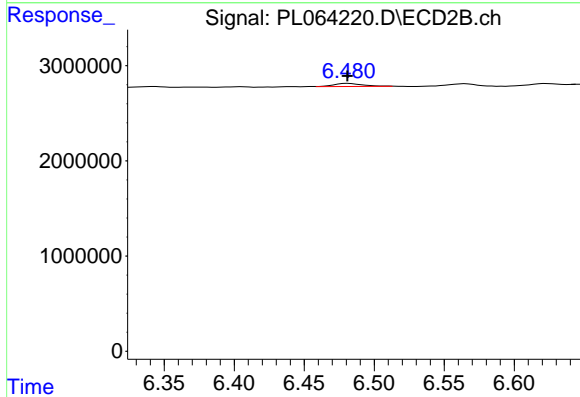
#6 beta-BHC  
 R.T.: 4.976 min  
 Delta R.T.: 0.000 min  
 Response: 21597868  
 Conc: 10.40 ng/ml



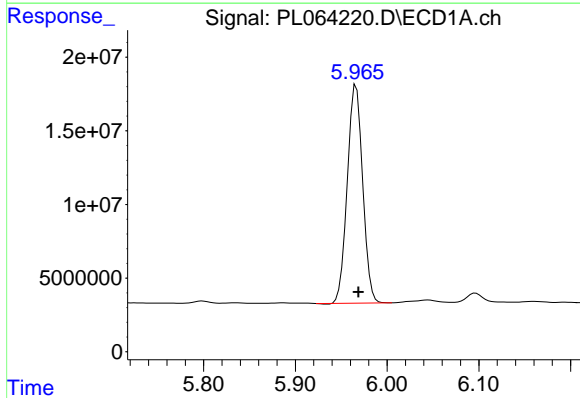
#12 4,4'-DDE  
 R.T.: 5.583 min  
 Delta R.T.: -0.003 min  
 Response: 1107242  
 Conc: 0.31 ng/ml m

Instrument :  
 ECD\_L  
 ClientSampled :  
 PEM

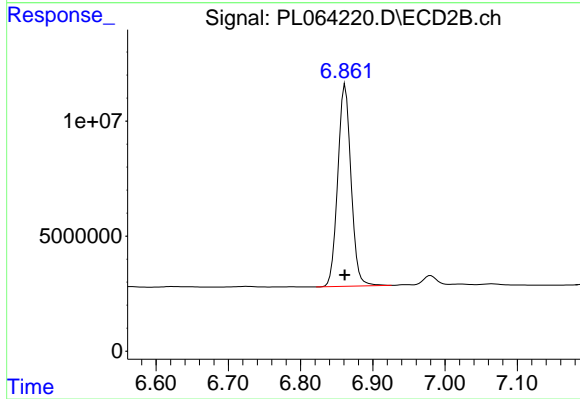
Manual Integrations  
 APPROVED  
 Ankita  
 1/20/2021 11:35:26 AM



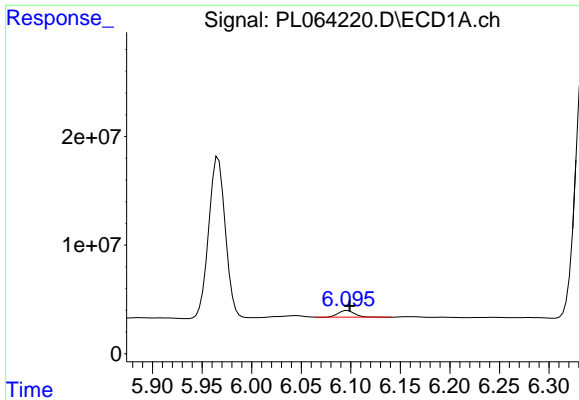
#12 4,4'-DDE  
 R.T.: 6.480 min  
 Delta R.T.: 0.000 min  
 Response: 458642  
 Conc: 0.17 ng/ml m



#14 Endrin  
 R.T.: 5.966 min  
 Delta R.T.: -0.002 min  
 Response: 172274287  
 Conc: 49.61 ng/ml



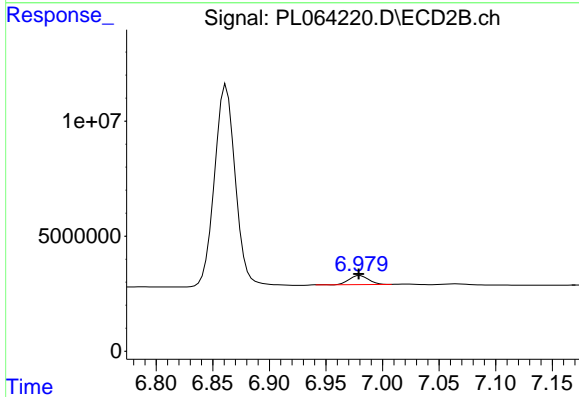
#14 Endrin  
 R.T.: 6.862 min  
 Delta R.T.: 0.001 min  
 Response: 112025061  
 Conc: 49.06 ng/ml



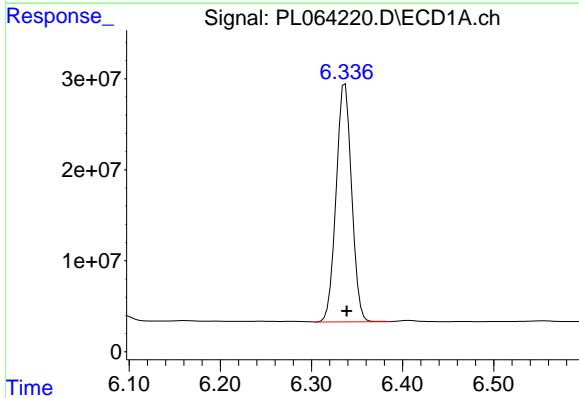
#16 4,4'-DDD  
 R.T.: 6.096 min  
 Delta R.T.: -0.003 min  
 Response: 6988789  
 Conc: 2.40 ng/ml

Instrument :  
 ECD\_L  
 ClientSampled :  
 PEM

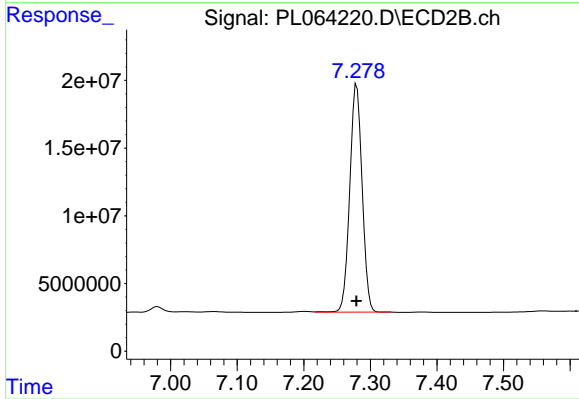
Manual Integrations  
 APPROVED  
 Ankita  
 1/20/2021 11:35:26 AM



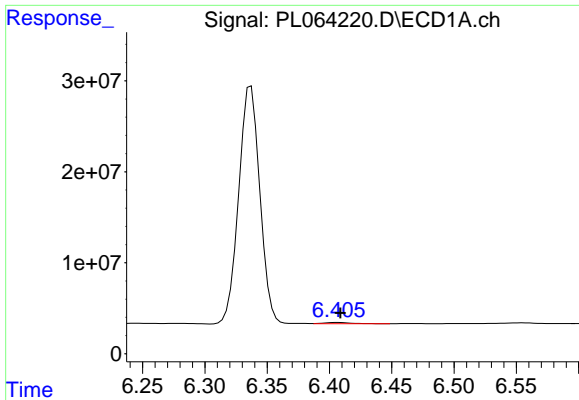
#16 4,4'-DDD  
 R.T.: 6.980 min  
 Delta R.T.: 0.001 min  
 Response: 4684408  
 Conc: 2.11 ng/ml



#17 4,4'-DDT  
 R.T.: 6.337 min  
 Delta R.T.: -0.002 min  
 Response: 309007109  
 Conc: 103.51 ng/ml



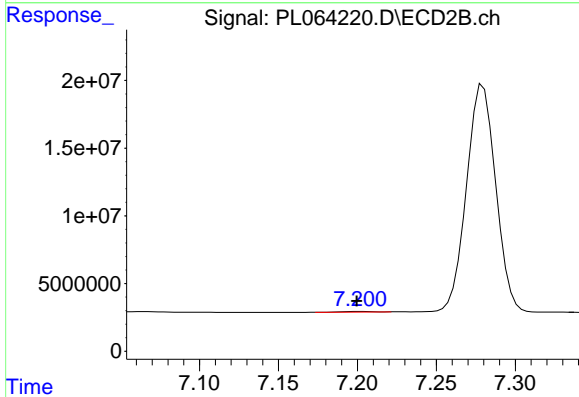
#17 4,4'-DDT  
 R.T.: 7.280 min  
 Delta R.T.: 0.000 min  
 Response: 217449976  
 Conc: 96.01 ng/ml



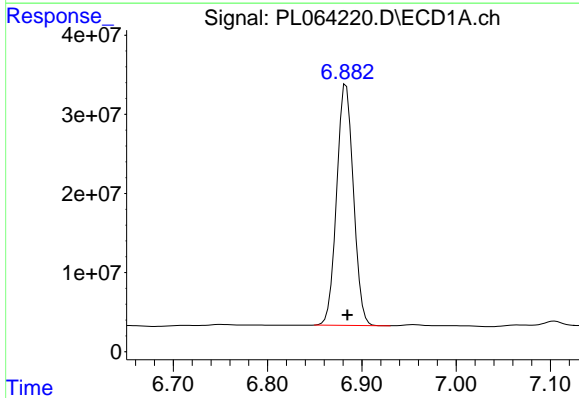
#18 Endrin aldehyde  
 R.T.: 6.407 min  
 Delta R.T.: -0.002 min  
 Response: 2029343  
 Conc: 0.71 ng/ml

Instrument :  
 ECD\_L  
 ClientSampled :  
 PEM

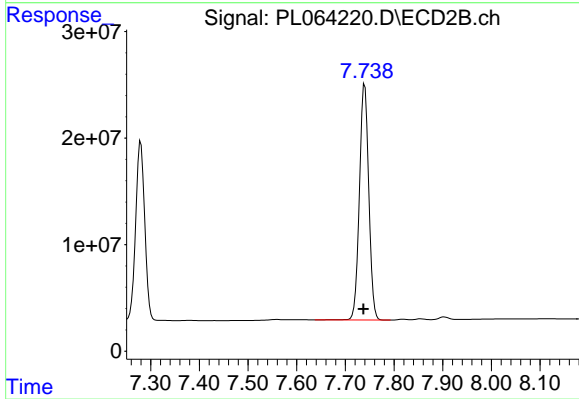
Manual Integrations  
 APPROVED  
 Ankita  
 1/20/2021 11:35:26 AM



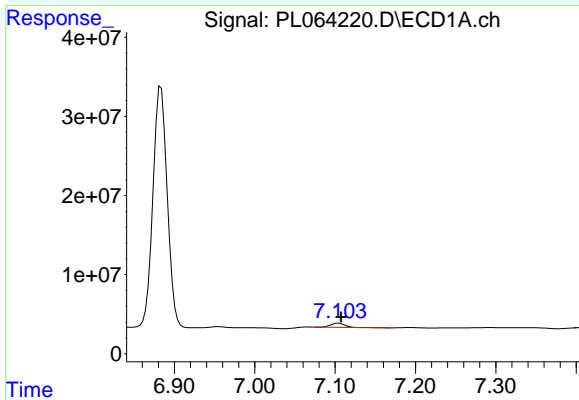
#18 Endrin aldehyde  
 R.T.: 7.200 min  
 Delta R.T.: 0.000 min  
 Response: 654706  
 Conc: 0.30 ng/ml m



#20 Methoxychlor  
 R.T.: 6.883 min  
 Delta R.T.: -0.001 min  
 Response: 376162424  
 Conc: 225.09 ng/ml



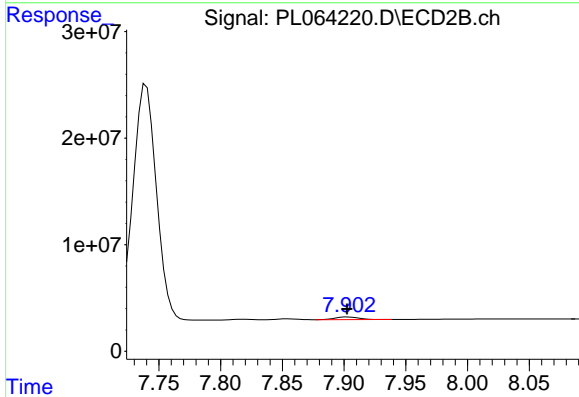
#20 Methoxychlor  
 R.T.: 7.740 min  
 Delta R.T.: 0.003 min  
 Response: 294938186  
 Conc: 218.29 ng/ml



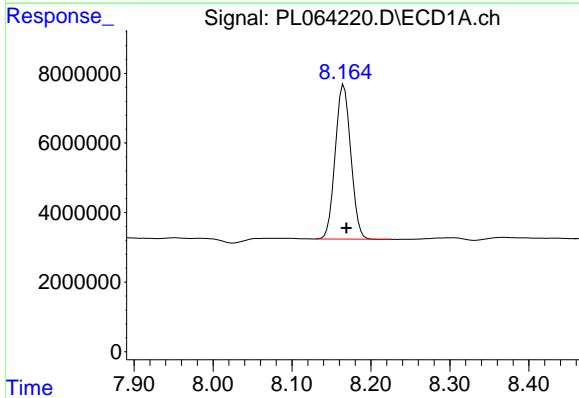
#21 Endrin ketone  
 R.T.: 7.104 min  
 Delta R.T.: -0.003 min  
 Response: 6463011  
 Conc: 1.80 ng/ml

Instrument :  
 ECD\_L  
 ClientSampled :  
 PEM

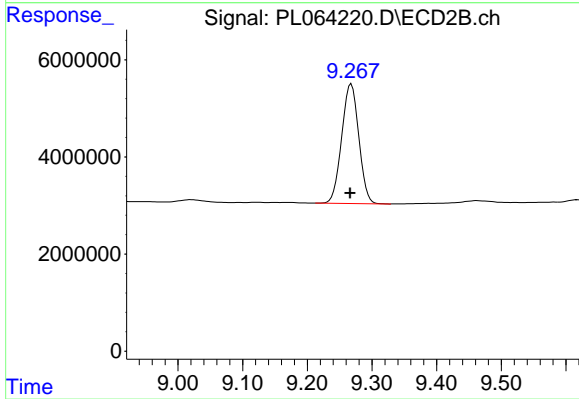
Manual Integrations  
 APPROVED  
 Ankita  
 1/20/2021 11:35:26 AM



#21 Endrin ketone  
 R.T.: 7.903 min  
 Delta R.T.: 0.000 min  
 Response: 3459673  
 Conc: 1.39 ng/ml



#28 Decachlorobiphenyl  
 R.T.: 8.166 min  
 Delta R.T.: -0.003 min  
 Response: 60787650  
 Conc: 19.92 ng/ml



#28 Decachlorobiphenyl  
 R.T.: 9.268 min  
 Delta R.T.: 0.002 min  
 Response: 45307581  
 Conc: 19.09 ng/ml