

Data Path : Z:\pestpcbsrv\HPCHEM1\ECD\_L\Data\PL011921\  
 Data File : PL064225.D  
 Signal(s) : Signal #1: ECD1A.ch Signal #2: ECD2B.ch  
 Acq On : 19 Jan 2021 15:45  
 Operator : AR\AJ  
 Sample : M1082-02MS  
 Misc :  
 ALS Vial : 16 Sample Multiplier: 1

Instrument :  
 ECD\_L  
 ClientSampleId :  
 BACKFILL-ASHCROFT-01MS

Integration File signal 1: autoint1.e  
 Integration File signal 2: autoint2.e  
 Quant Time: Jan 20 00:47:53 2021  
 Quant Method : Z:\pestpcbsrv\HPCHEM1\ECD\_L\methods\PL011221.M  
 Quant Title : GC Extractables  
 QLast Update : Mon Jan 18 13:25:12 2021  
 Response via : Initial Calibration  
 Integrator: ChemStation

Volume Inj. : 1 µl  
 Signal #1 Phase : ZB-MR2 Signal #2 Phase: ZB-MR1  
 Signal #1 Info : 30M x 0.32mm x0.2 Signal #2 Info : 30M x 0.32mm x0.5µm

	Compound	RT#1	RT#2	Resp#1	Resp#2	ng/ml	ng/ml
-----							
System Monitoring Compounds							
1)	SA Tetrachlo...	3.435	4.106	68793709	60039667	22.943	23.486
28)	SA Decachlor...	8.168	9.267	59451442	46964833	19.479	19.788
Target Compounds							
2)	A alpha-BHC	3.869	4.508	259.7E6	190.7E6	52.218	52.192
3)	MA gamma-BHC...	4.149	4.799	255.2E6	182.2E6	55.048	51.738
4)	MA Heptachlor	4.448	5.312	242.4E6	191.9E6	55.318	53.425
5)	MB Aldrin	4.694	5.623	222.9E6	161.4E6	55.620	52.004
6)	B beta-BHC	4.398	4.976	99884554	80297549	53.914	49.822
7)	B delta-BHC	4.600	5.197	151.9E6	108.0E6	32.809	34.023
8)	B Heptachlo...	5.135	6.017	212.9E6	142.0E6	56.168	54.500
9)	A Endosulfan I	5.471	6.379	189.8E6	137.5E6	53.722	50.153
10)	B gamma-Chl...	5.361	6.252	211.2E6	153.3E6	54.513	51.024
11)	B alpha-Chl...	5.419	6.325	206.0E6	152.7E6	53.839	50.171
12)	B 4,4'-DDE	5.585	6.482	190.3E6	137.5E6	54.019	51.619
13)	MA Dieldrin	5.713	6.640	200.0E6	142.4E6	53.780	50.634
14)	MA Endrin	5.967	6.862	185.1E6	118.9E6	53.297	52.049
15)	B Endosulfa...	6.239	7.075	174.3E6	117.9E6	51.408	46.677
16)	A 4,4'-DDD	6.098	6.980	147.8E6	107.1E6	50.691	48.325
17)	MA 4,4'-DDT	6.338	7.279	156.0E6	110.7E6	52.259	48.894
18)	B Endrin al...	6.408	7.200	143.6E6	103.8E6	50.067	47.896
19)	B Endosulfa...	6.620	7.424	155.9E6	109.5E6	45.942	44.349
20)	A Methoxychlor	6.885	7.739	83787526	63853048	50.138	47.258
21)	B Endrin ke...	7.107	7.903	174.8E6	118.1E6	48.671	47.344
22)	Mirex	7.294	8.356	135.0E6	94637927	49.628	46.651

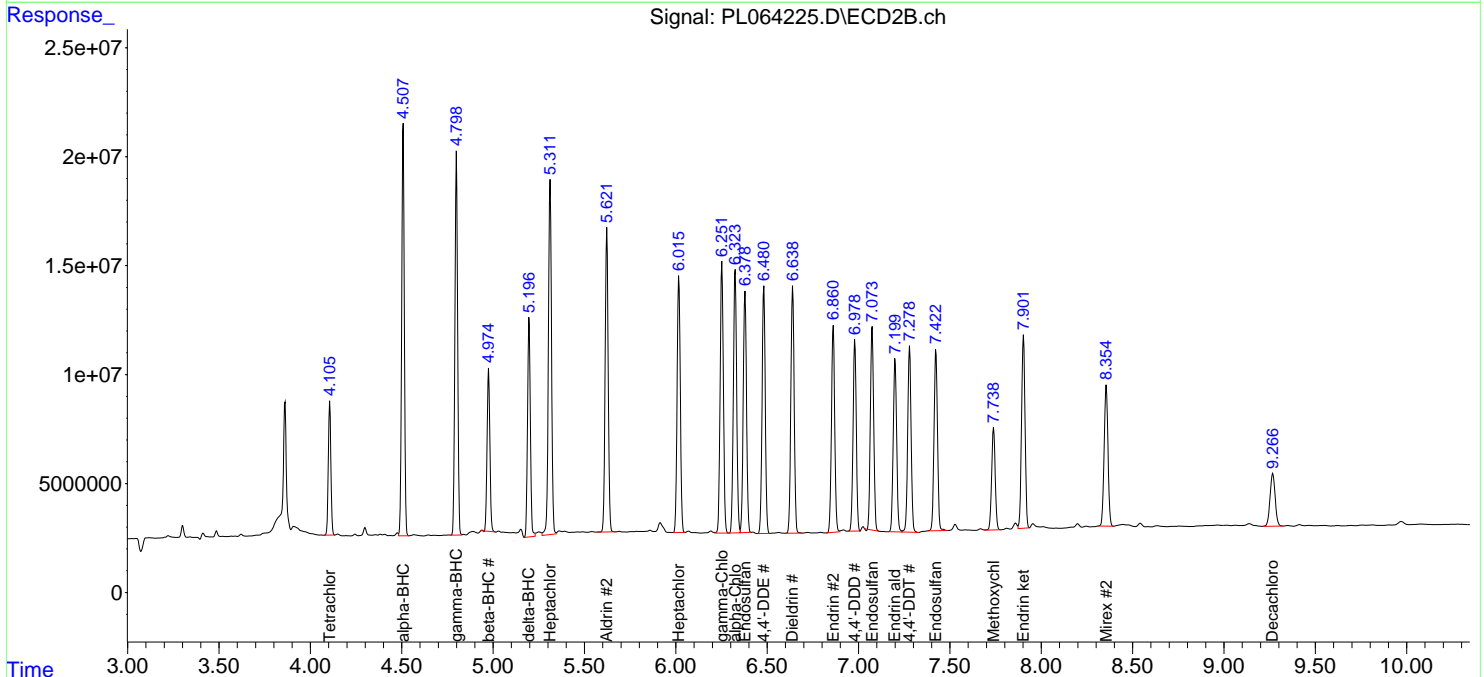
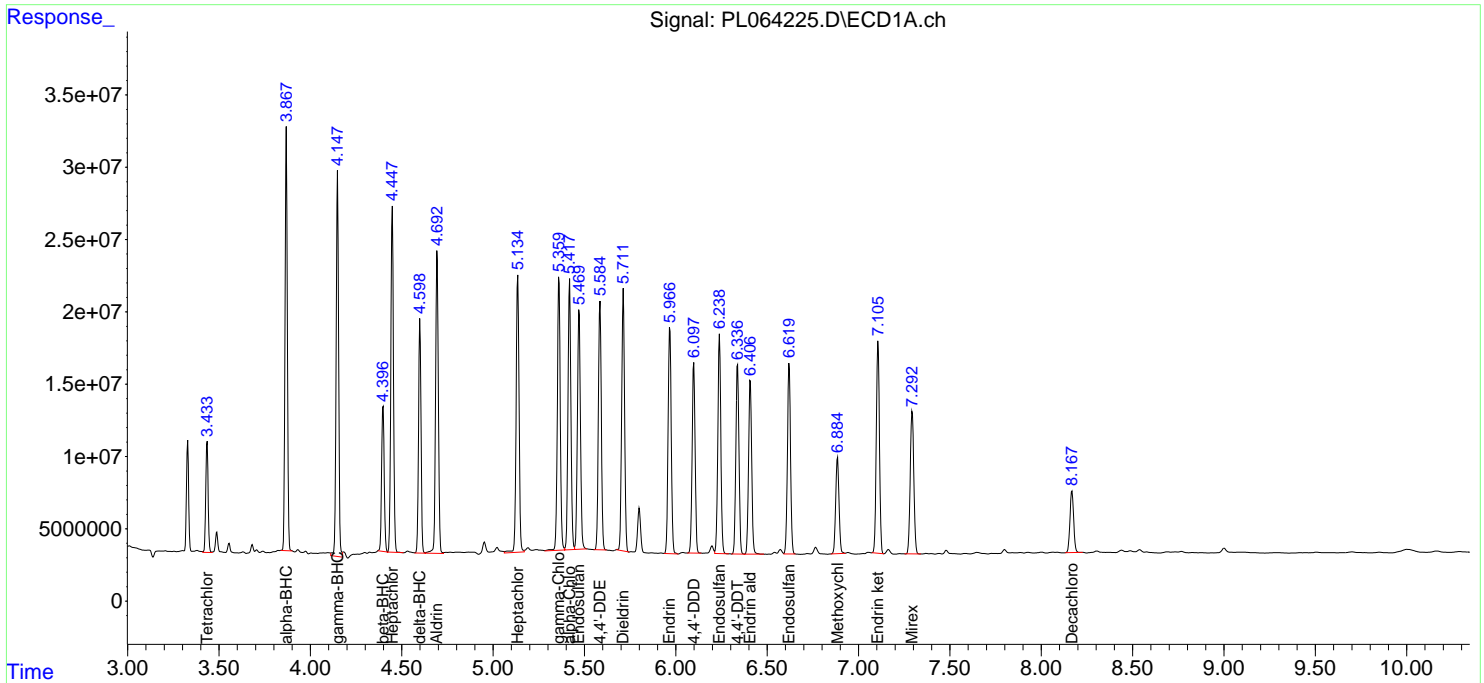
(f)=RT Delta > 1/2 Window (#)=Amounts differ by > 25% (m)=manual int.

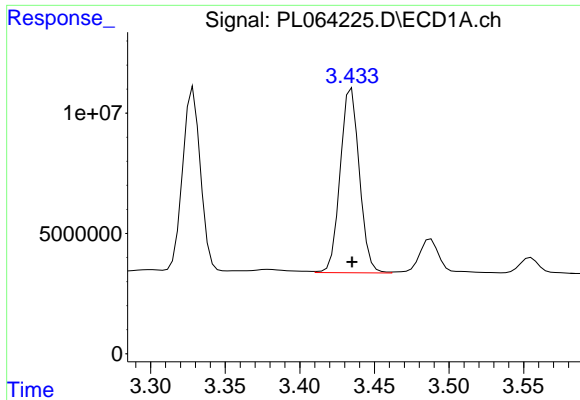
Data Path : Z:\pestpcbsrv\HPCHEM1\ECD\_L\Data\PL011921\  
 Data File : PL064225.D  
 Signal(s) : Signal #1: ECD1A.ch Signal #2: ECD2B.ch  
 Acq On : 19 Jan 2021 15:45  
 Operator : AR\AJ  
 Sample : M1082-02MS  
 Misc :  
 ALS Vial : 16 Sample Multiplier: 1

Instrument :  
 ECD\_L  
 Client Sampled :  
 BACKFILL-ASHCROFT-01MS

Integration File signal 1: autoint1.e  
 Integration File signal 2: autoint2.e  
 Quant Time: Jan 20 00:47:53 2021  
 Quant Method : Z:\pestpcbsrv\HPCHEM1\ECD\_L\methods\PL011221.M  
 Quant Title : GC Extractables  
 QLast Update : Mon Jan 18 13:25:12 2021  
 Response via : Initial Calibration  
 Integrator: ChemStation

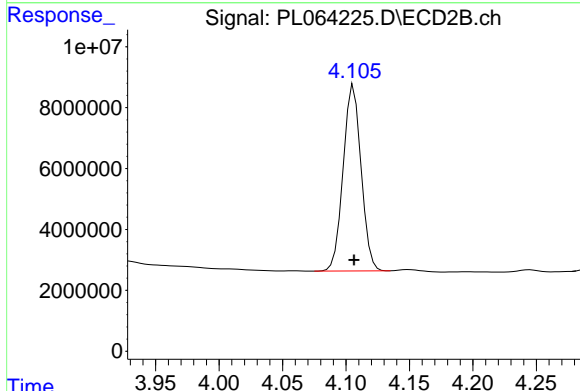
Volume Inj. : 1 µl  
 Signal #1 Phase : ZB-MR2 Signal #2 Phase: ZB-MR1  
 Signal #1 Info : 30M x 0.32mm x0.2 Signal #2 Info : 30M x 0.32mm x0.5µm



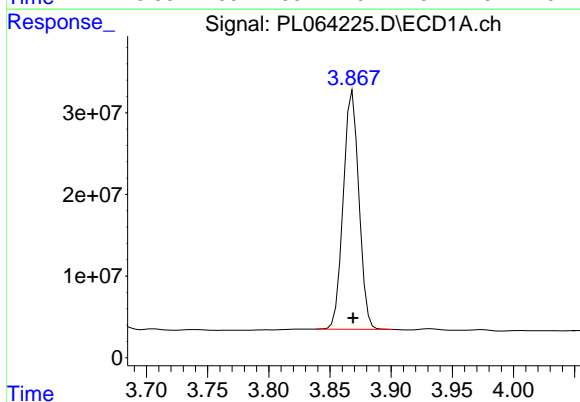


#1 Tetrachloro-m-xylene  
 R.T.: 3.435 min  
 Delta R.T.: 0.000 min  
 Response: 68793709  
 Conc: 22.94 ng/ml

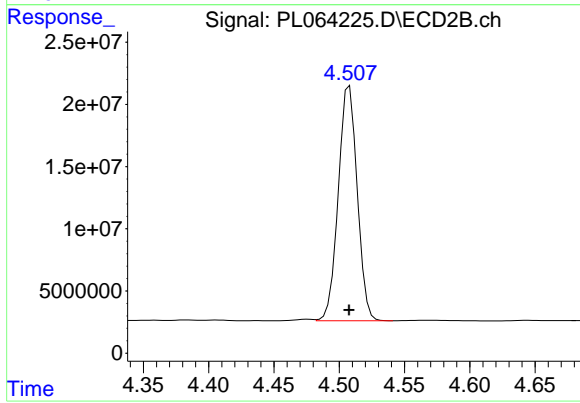
**Instrument :**  
 ECD\_L  
**ClientSampleId :**  
 BACKFILL-ASHCROFT-01MS



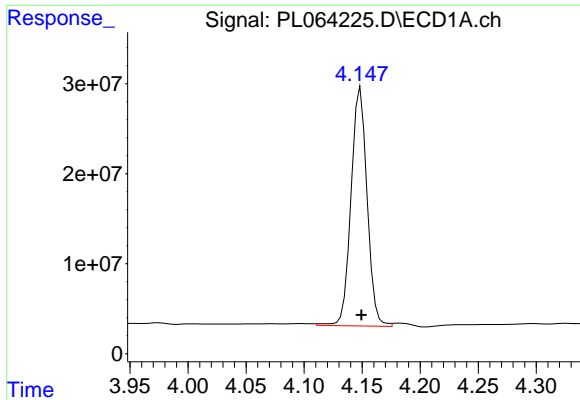
#1 Tetrachloro-m-xylene  
 R.T.: 4.106 min  
 Delta R.T.: 0.000 min  
 Response: 60039667  
 Conc: 23.49 ng/ml



#2 alpha-BHC  
 R.T.: 3.869 min  
 Delta R.T.: 0.000 min  
 Response: 259726721  
 Conc: 52.22 ng/ml

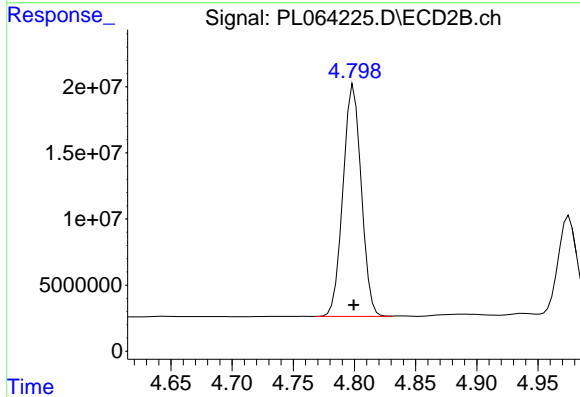


#2 alpha-BHC  
 R.T.: 4.508 min  
 Delta R.T.: 0.000 min  
 Response: 190738970  
 Conc: 52.19 ng/ml

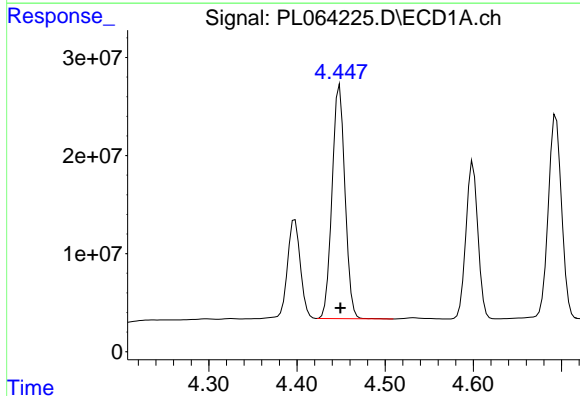


#3 gamma-BHC (Lindane)  
 R.T.: 4.149 min  
 Delta R.T.: 0.000 min  
 Response: 255228312  
 Conc: 55.05 ng/ml

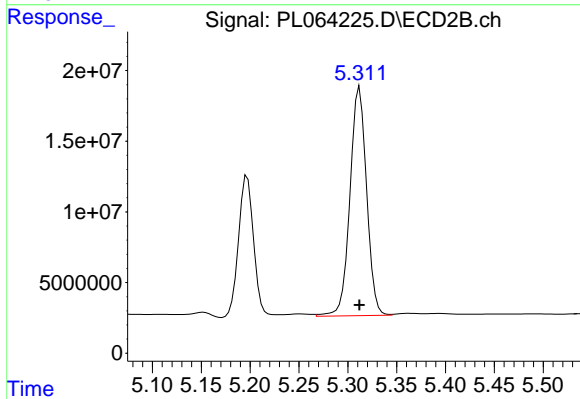
Instrument :  
 ECD\_L  
 ClientSampleId :  
 BACKFILL-ASHCROFT-01MS



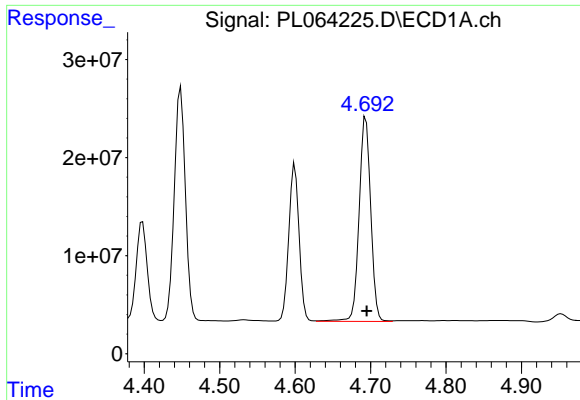
#3 gamma-BHC (Lindane)  
 R.T.: 4.799 min  
 Delta R.T.: 0.000 min  
 Response: 182244484  
 Conc: 51.74 ng/ml



#4 Heptachlor  
 R.T.: 4.448 min  
 Delta R.T.: 0.000 min  
 Response: 242391074  
 Conc: 55.32 ng/ml

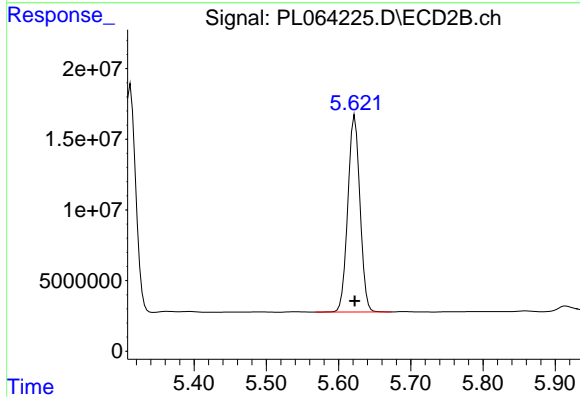


#4 Heptachlor  
 R.T.: 5.312 min  
 Delta R.T.: 0.000 min  
 Response: 191885509  
 Conc: 53.42 ng/ml

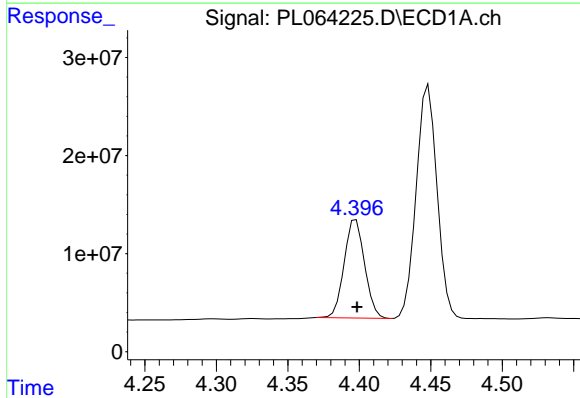


#5 Aldrin  
 R.T.: 4.694 min  
 Delta R.T.: -0.001 min  
 Response: 222868520  
 Conc: 55.62 ng/ml

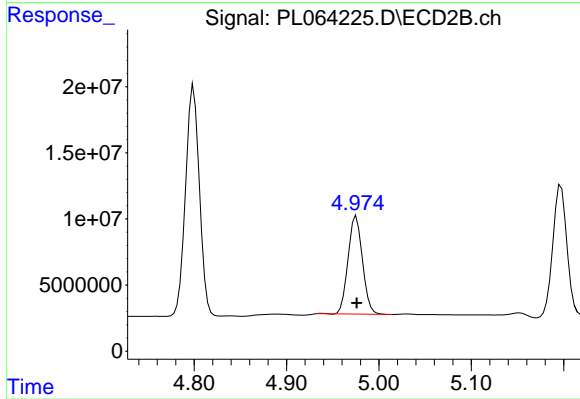
Instrument :  
 ECD\_L  
 ClientSampleId :  
 BACKFILL-ASHCROFT-01MS



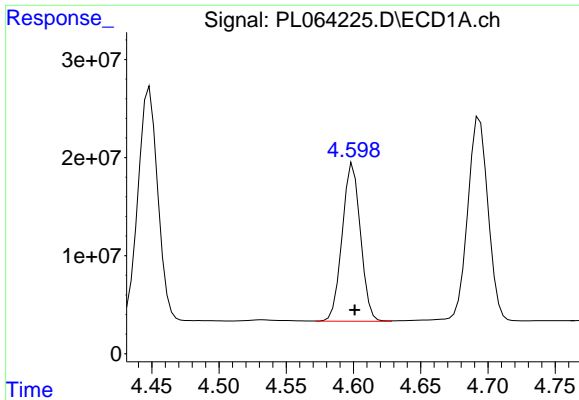
#5 Aldrin  
 R.T.: 5.623 min  
 Delta R.T.: 0.000 min  
 Response: 161410495  
 Conc: 52.00 ng/ml



#6 beta-BHC  
 R.T.: 4.398 min  
 Delta R.T.: 0.000 min  
 Response: 99884554  
 Conc: 53.91 ng/ml

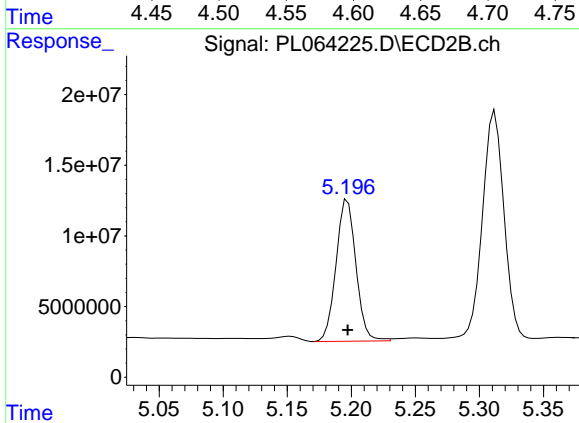


#6 beta-BHC  
 R.T.: 4.976 min  
 Delta R.T.: 0.000 min  
 Response: 80297549  
 Conc: 49.82 ng/ml

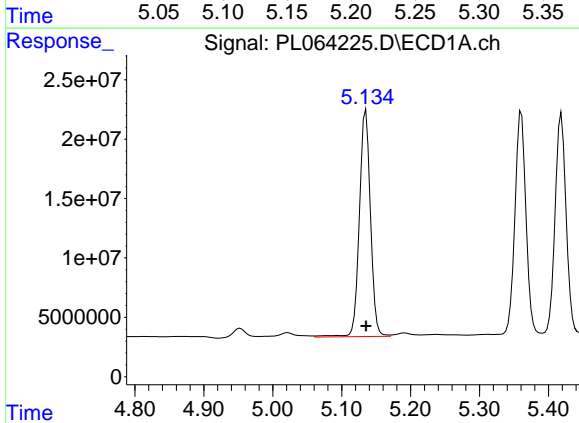


#7 delta-BHC  
 R.T.: 4.600 min  
 Delta R.T.: -0.001 min  
 Response: 151936024  
 Conc: 32.81 ng/ml

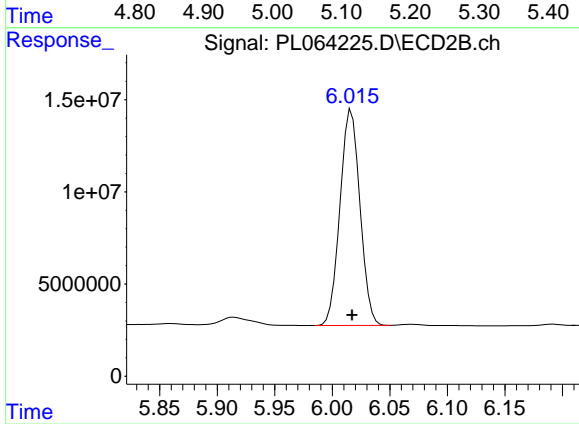
Instrument :  
 ECD\_L  
 ClientSampleId :  
 BACKFILL-ASHCROFT-01MS



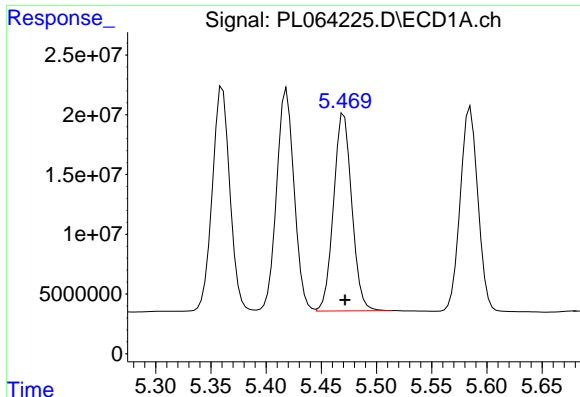
#7 delta-BHC  
 R.T.: 5.197 min  
 Delta R.T.: 0.000 min  
 Response: 108009752  
 Conc: 34.02 ng/ml



#8 Heptachlor epoxide  
 R.T.: 5.135 min  
 Delta R.T.: 0.000 min  
 Response: 212852698  
 Conc: 56.17 ng/ml



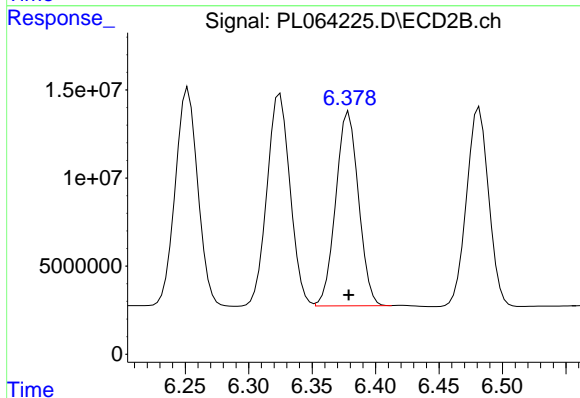
#8 Heptachlor epoxide  
 R.T.: 6.017 min  
 Delta R.T.: 0.000 min  
 Response: 141977688  
 Conc: 54.50 ng/ml



#9 Endosulfan I

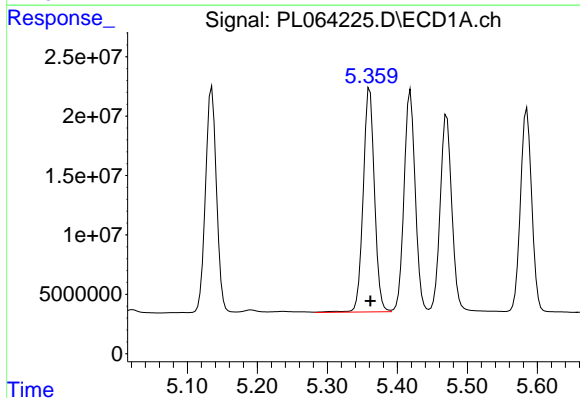
R.T.: 5.471 min  
Delta R.T.: -0.001 min  
Response: 189757723  
Conc: 53.72 ng/ml

Instrument :  
ECD\_L  
ClientSampleId :  
BACKFILL-ASHCROFT-01MS



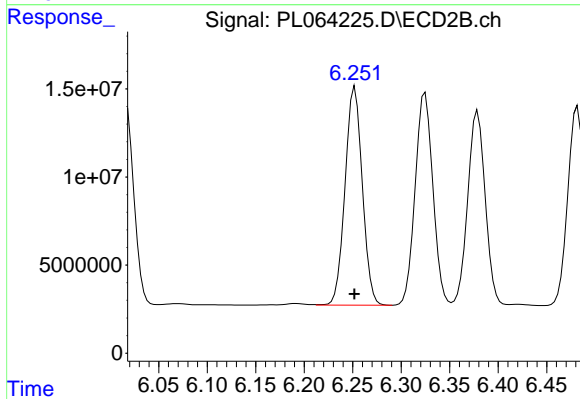
#9 Endosulfan I

R.T.: 6.379 min  
Delta R.T.: 0.000 min  
Response: 137457634  
Conc: 50.15 ng/ml



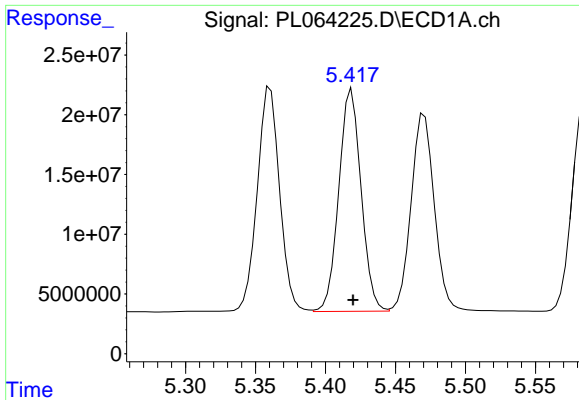
#10 gamma-Chlordane

R.T.: 5.361 min  
Delta R.T.: -0.001 min  
Response: 211166839  
Conc: 54.51 ng/ml



#10 gamma-Chlordane

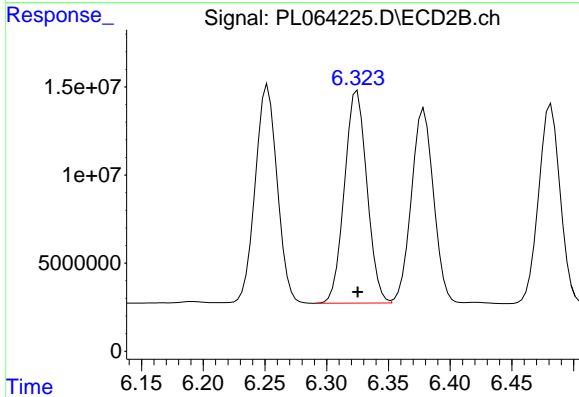
R.T.: 6.252 min  
Delta R.T.: 0.000 min  
Response: 153316604  
Conc: 51.02 ng/ml



#11 alpha-Chlordane

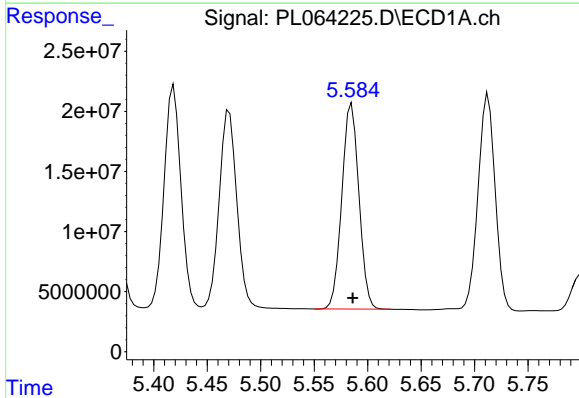
R.T.: 5.419 min  
 Delta R.T.: 0.000 min  
 Response: 20600000  
 Conc: 53.84 ng/ml

Instrument :  
 ECD\_L  
 ClientSampleId :  
 BACKFILL-ASHCROFT-01MS



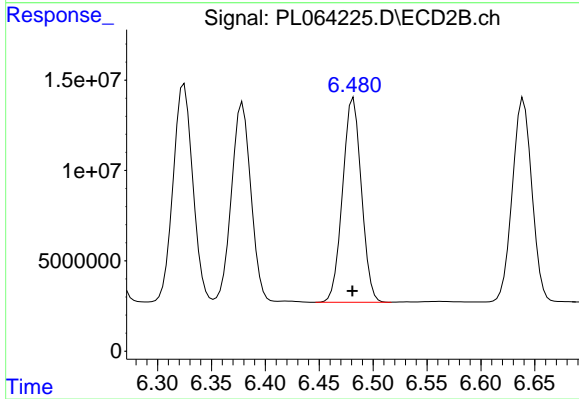
#11 alpha-Chlordane

R.T.: 6.325 min  
 Delta R.T.: 0.000 min  
 Response: 152728653  
 Conc: 50.17 ng/ml



#12 4,4'-DDE

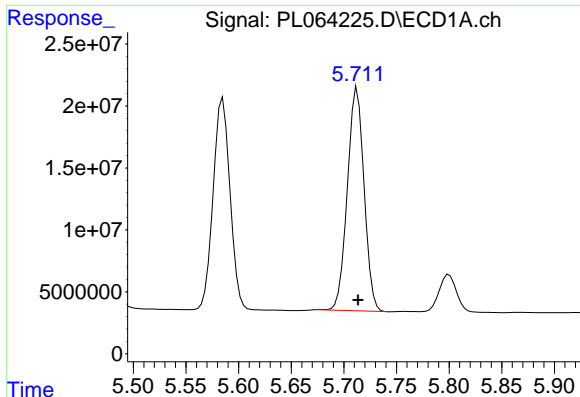
R.T.: 5.585 min  
 Delta R.T.: 0.000 min  
 Response: 190302598  
 Conc: 54.02 ng/ml



#12 4,4'-DDE

R.T.: 6.482 min  
 Delta R.T.: 0.001 min  
 Response: 137492109  
 Conc: 51.62 ng/ml

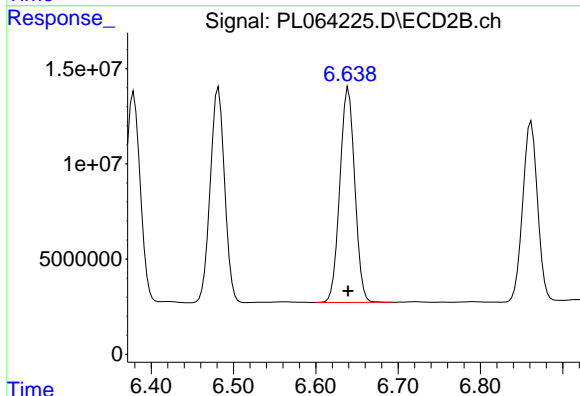




#13 Dieldrin

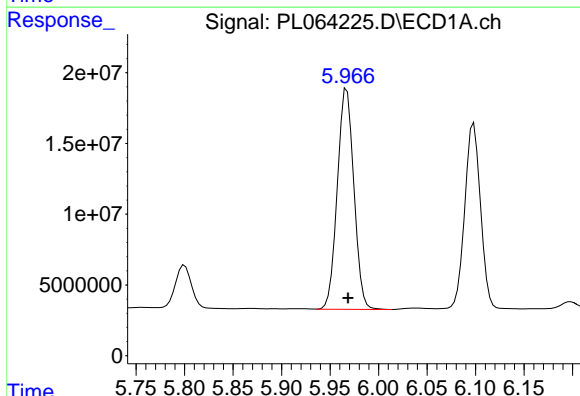
R.T.: 5.713 min  
 Delta R.T.: 0.000 min  
 Response: 200038524  
 Conc: 53.78 ng/ml

Instrument :  
 ECD\_L  
 ClientSampleId :  
 BACKFILL-ASHCROFT-01MS



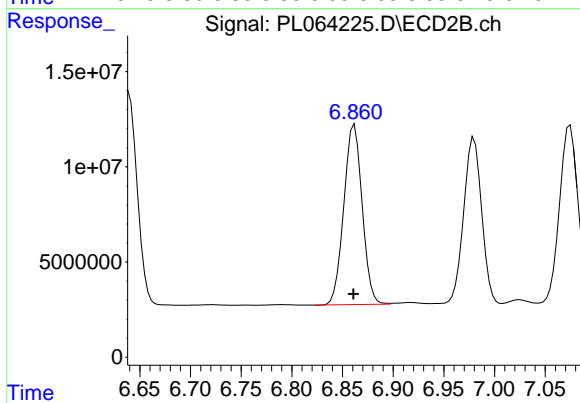
#13 Dieldrin

R.T.: 6.640 min  
 Delta R.T.: 0.000 min  
 Response: 142378694  
 Conc: 50.63 ng/ml



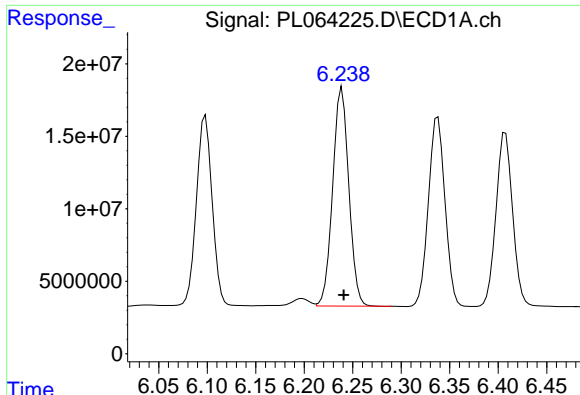
#14 Endrin

R.T.: 5.967 min  
 Delta R.T.: -0.001 min  
 Response: 185070146  
 Conc: 53.30 ng/ml



#14 Endrin

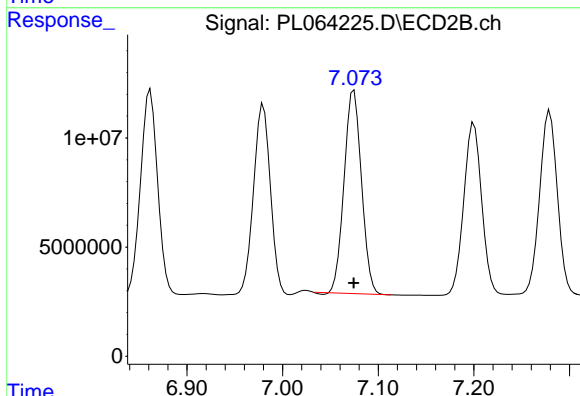
R.T.: 6.862 min  
 Delta R.T.: 0.000 min  
 Response: 118854895  
 Conc: 52.05 ng/ml



#15 Endosulfan II

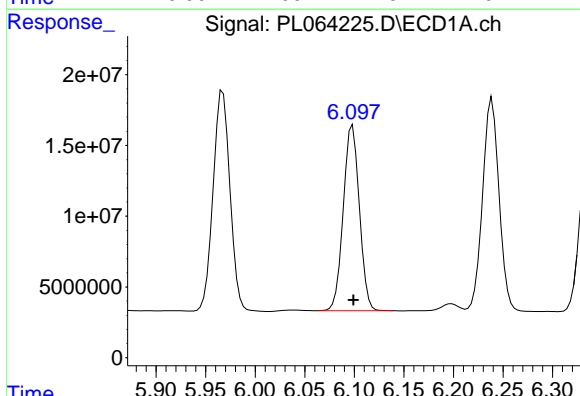
R.T.: 6.239 min  
 Delta R.T.: -0.002 min  
 Response: 174258022  
 Conc: 51.41 ng/ml

Instrument :  
 ECD\_L  
 ClientSampleId :  
 BACKFILL-ASHCROFT-01MS



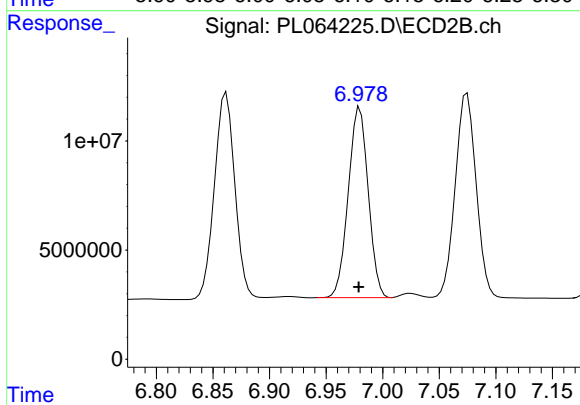
#15 Endosulfan II

R.T.: 7.075 min  
 Delta R.T.: 0.000 min  
 Response: 117913080  
 Conc: 46.68 ng/ml



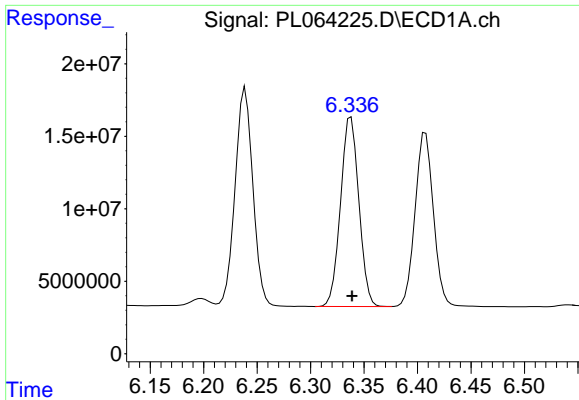
#16 4,4'-DDD

R.T.: 6.098 min  
 Delta R.T.: 0.000 min  
 Response: 147845072  
 Conc: 50.69 ng/ml



#16 4,4'-DDD

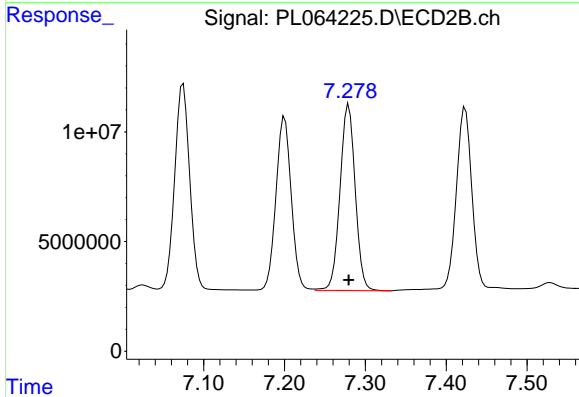
R.T.: 6.980 min  
 Delta R.T.: 0.000 min  
 Response: 107115012  
 Conc: 48.33 ng/ml



#17 4,4'-DDT

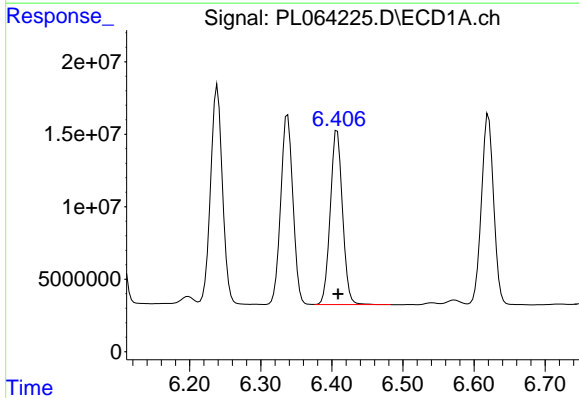
R.T.: 6.338 min  
Delta R.T.: 0.000 min  
Response: 156012470  
Conc: 52.26 ng/ml

Instrument :  
ECD\_L  
ClientSampleId :  
BACKFILL-ASHCROFT-01MS



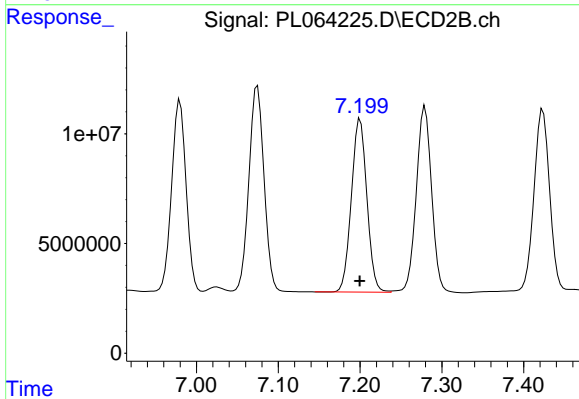
#17 4,4'-DDT

R.T.: 7.279 min  
Delta R.T.: 0.000 min  
Response: 110742949  
Conc: 48.89 ng/ml



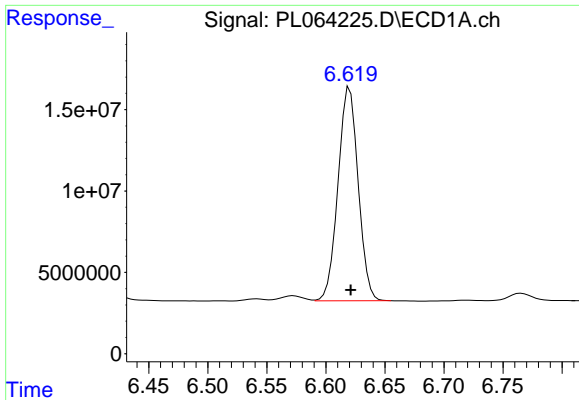
#18 Endrin aldehyde

R.T.: 6.408 min  
Delta R.T.: -0.001 min  
Response: 143617000  
Conc: 50.07 ng/ml



#18 Endrin aldehyde

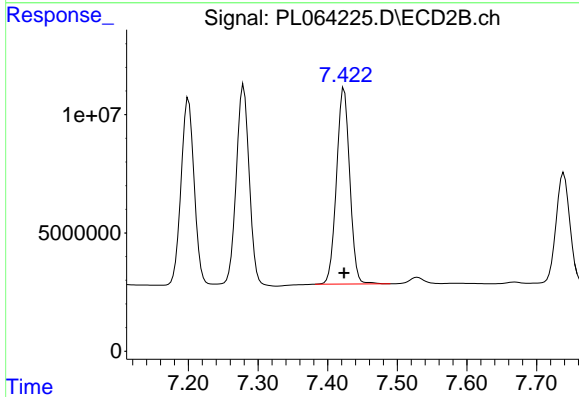
R.T.: 7.200 min  
Delta R.T.: 0.000 min  
Response: 103845341  
Conc: 47.90 ng/ml



#19 Endosulfan Sulfate

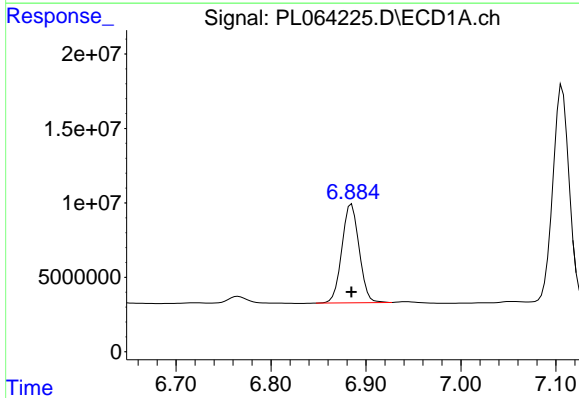
R.T.: 6.620 min  
 Delta R.T.: 0.000 min  
 Response: 155857590  
 Conc: 45.94 ng/ml

Instrument :  
 ECD\_L  
 ClientSampleId :  
 BACKFILL-ASHCROFT-01MS



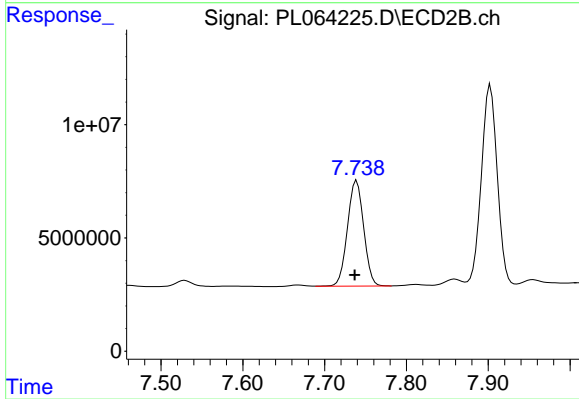
#19 Endosulfan Sulfate

R.T.: 7.424 min  
 Delta R.T.: 0.000 min  
 Response: 109542628  
 Conc: 44.35 ng/ml



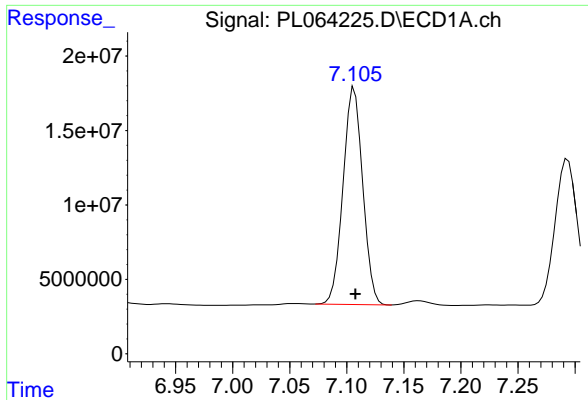
#20 Methoxychlor

R.T.: 6.885 min  
 Delta R.T.: 0.000 min  
 Response: 83787526  
 Conc: 50.14 ng/ml



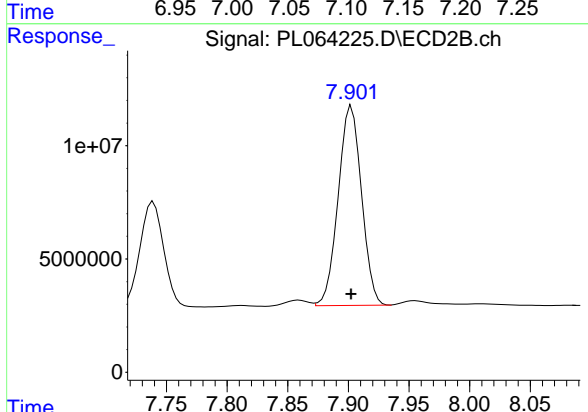
#20 Methoxychlor

R.T.: 7.739 min  
 Delta R.T.: 0.002 min  
 Response: 63853048  
 Conc: 47.26 ng/ml

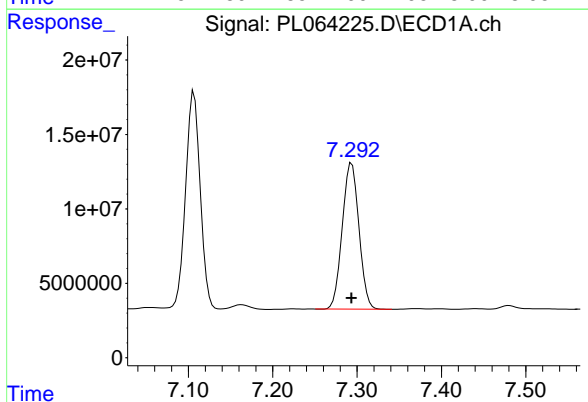


#21 Endrin ketone  
 R.T.: 7.107 min  
 Delta R.T.: 0.000 min  
 Response: 174792626  
 Conc: 48.67 ng/ml

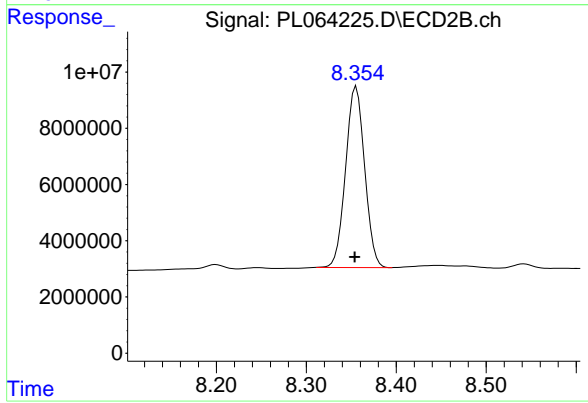
Instrument :  
 ECD\_L  
 ClientSampleId :  
 BACKFILL-ASHCROFT-01MS



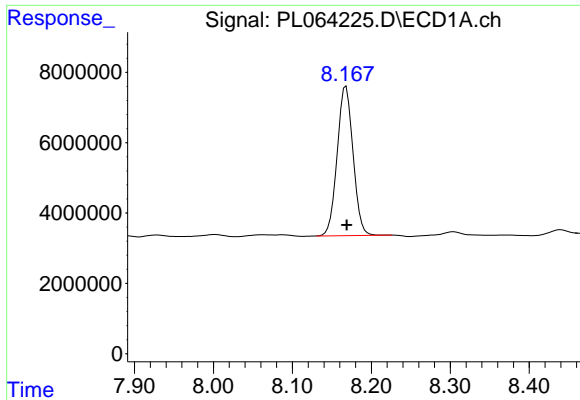
#21 Endrin ketone  
 R.T.: 7.903 min  
 Delta R.T.: 0.000 min  
 Response: 118085496  
 Conc: 47.34 ng/ml



#22 Mirex  
 R.T.: 7.294 min  
 Delta R.T.: 0.000 min  
 Response: 135021614  
 Conc: 49.63 ng/ml



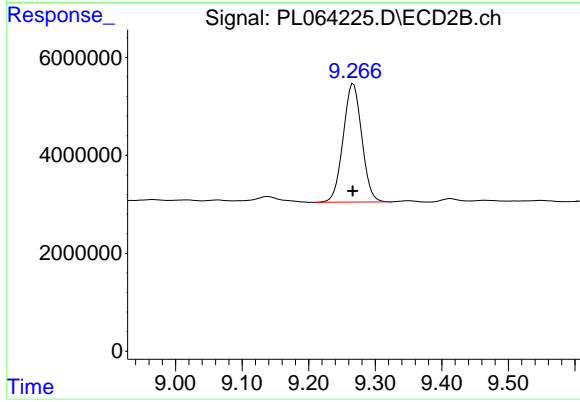
#22 Mirex  
 R.T.: 8.356 min  
 Delta R.T.: 0.002 min  
 Response: 94637927  
 Conc: 46.65 ng/ml



#28 Decachlorobiphenyl

R.T.: 8.168 min  
Delta R.T.: 0.000 min  
Response: 59451442  
Conc: 19.48 ng/ml

Instrument :  
ECD\_L  
ClientSampleId :  
BACKFILL-ASHCROFT-01MS



#28 Decachlorobiphenyl

R.T.: 9.267 min  
Delta R.T.: 0.000 min  
Response: 46964833  
Conc: 19.79 ng/ml