

Data Path : Z:\pestpcbsrv\HPCHEM1\ECD\_L\Data\PL011921\  
 Data File : PL064230.D  
 Signal(s) : Signal #1: ECD1A.ch Signal #2: ECD2B.ch  
 Acq On : 19 Jan 2021 16:56  
 Operator : AR\AJ  
 Sample : M1160-03DL 2X  
 Misc :  
 ALS Vial : 21 Sample Multiplier: 1

Instrument :  
 ECD\_L  
 ClientSampleId :  
 BASIN-1DL

Integration File signal 1: autoint1.e  
 Integration File signal 2: autoint2.e  
 Quant Time: Jan 20 05:40:56 2021  
 Quant Method : Z:\pestpcbsrv\HPCHEM1\ECD\_L\methods\PL011221.M  
 Quant Title : GC Extractables  
 QLast Update : Mon Jan 18 13:25:12 2021  
 Response via : Initial Calibration  
 Integrator: ChemStation

Volume Inj. : 1 µl  
 Signal #1 Phase : ZB-MR2 Signal #2 Phase: ZB-MR1  
 Signal #1 Info : 30M x 0.32mm x0.2 Signal #2 Info : 30M x 0.32mm x0.5µm

Compound	RT#1	RT#2	Resp#1	Resp#2	ng/ml	ng/ml
-----						
System Monitoring Compounds						
1) SA Tetrachlo...	3.435	4.107	33544353	25376035	11.187	9.926
28) SA Decachlor...	8.166	9.267	21156552	14864722	6.932	6.263
Target Compounds						
12) B 4,4'-DDE	5.585	6.482	175.9E6	115.8E6	49.938	43.467
13) MA Dieldrin	5.711	6.639	8354085	4757120	2.246	1.692
16) A 4,4'-DDD	6.097	6.979	23566354	15577923	8.080	7.028
17) MA 4,4'-DDT	6.337	7.280	44415037	30064061	14.878	13.274
-----						

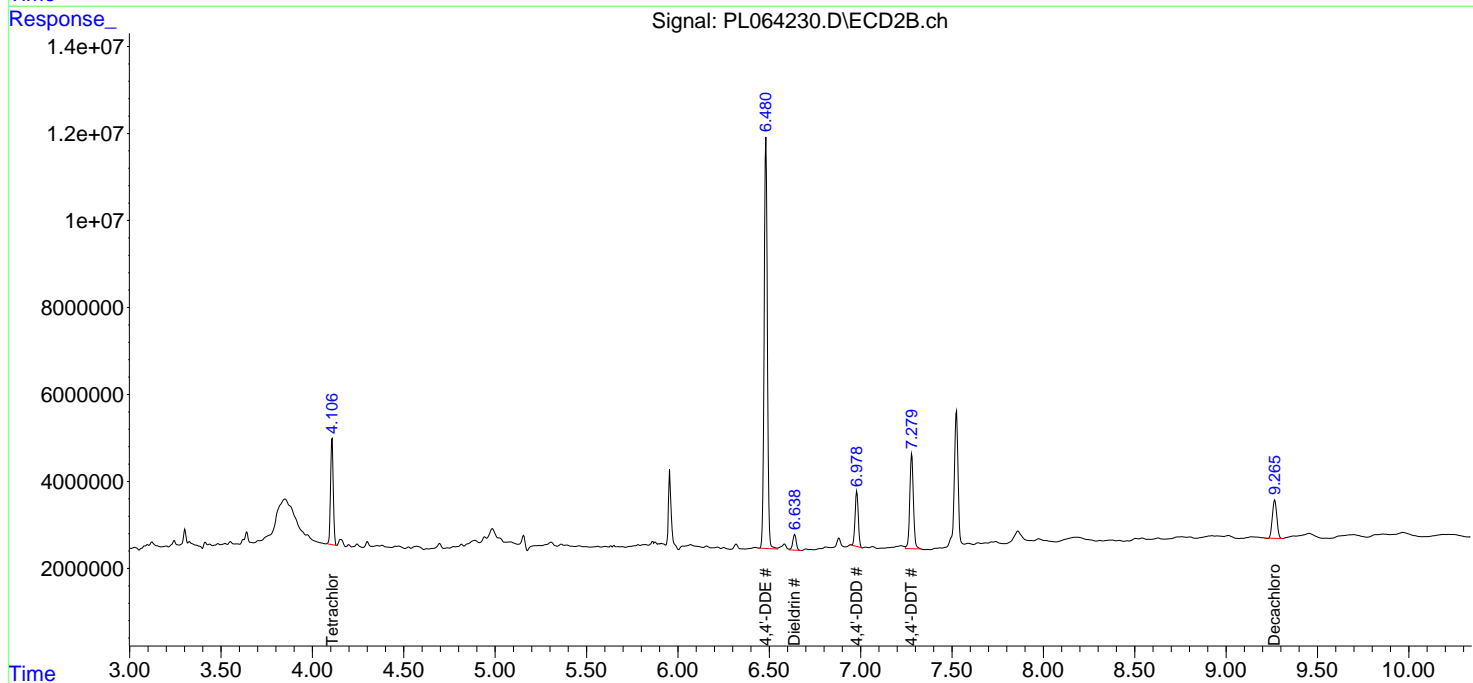
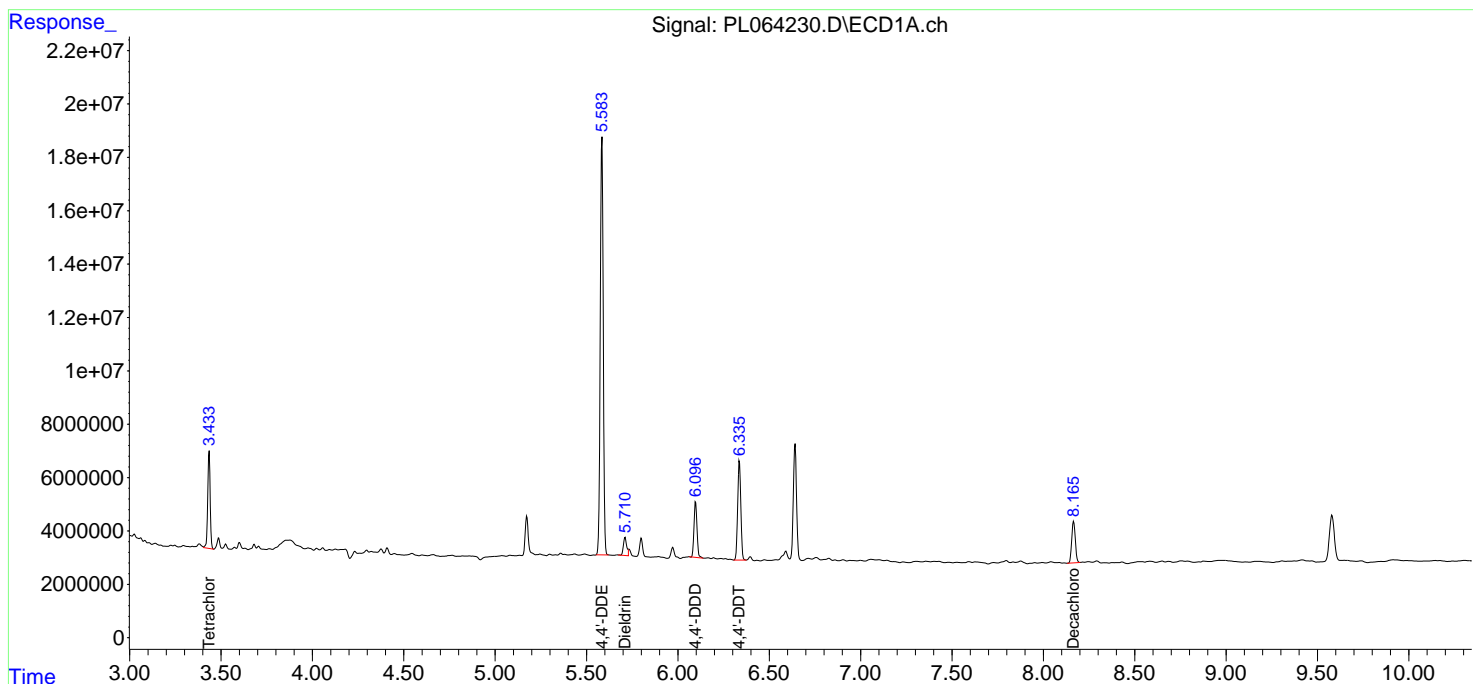
(f)=RT Delta > 1/2 Window (#)=Amounts differ by > 25% (m)=manual int.

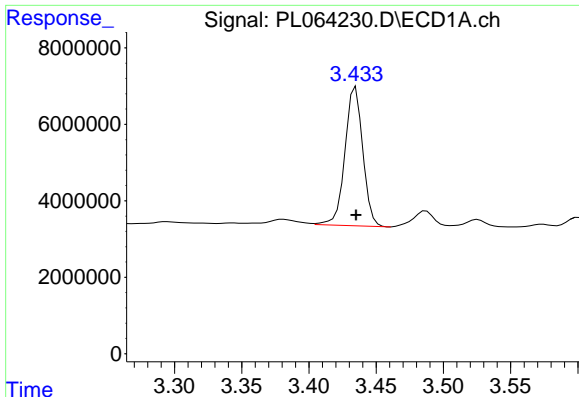
Data Path : Z:\pestpcbsrv\HPCHEM1\ECD\_L\Data\PL011921\  
 Data File : PL064230.D  
 Signal(s) : Signal #1: ECD1A.ch Signal #2: ECD2B.ch  
 Acq On : 19 Jan 2021 16:56  
 Operator : AR\AJ  
 Sample : M1160-03DL 2X  
 Misc :  
 ALS Vial : 21 Sample Multiplier: 1

Instrument :  
 ECD\_L  
 ClientSampleID :  
 BASIN-1DL

Integration File signal 1: autoint1.e  
 Integration File signal 2: autoint2.e  
 Quant Time: Jan 20 05:40:56 2021  
 Quant Method : Z:\pestpcbsrv\HPCHEM1\ECD\_L\methods\PL011221.M  
 Quant Title : GC Extractables  
 QLast Update : Mon Jan 18 13:25:12 2021  
 Response via : Initial Calibration  
 Integrator: ChemStation

Volume Inj. : 1 µl  
 Signal #1 Phase : ZB-MR2 Signal #2 Phase: ZB-MR1  
 Signal #1 Info : 30M x 0.32mm x0.2 Signal #2 Info : 30M x 0.32mm x0.5µm

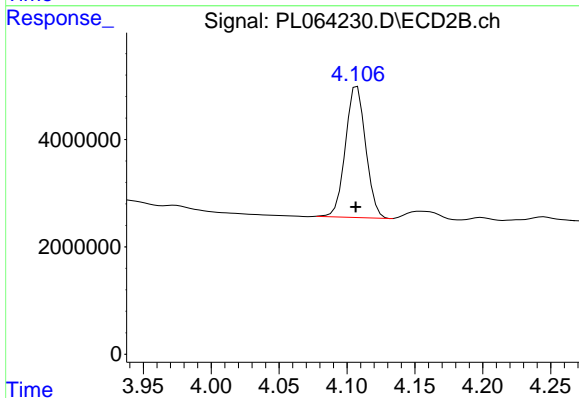




#1 Tetrachloro-m-xylene

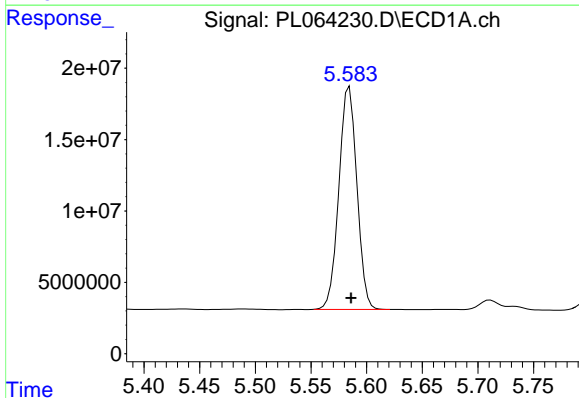
R.T.: 3.435 min  
 Delta R.T.: 0.000 min  
 Response: 33544353  
 Conc: 11.19 ng/ml

Instrument :  
 ECD\_L  
 ClientSampled :  
 BASIN-1DL



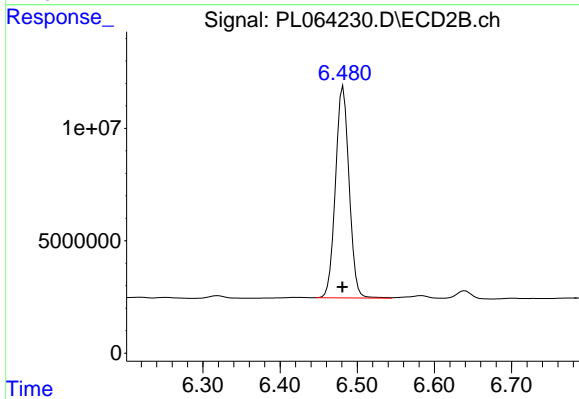
#1 Tetrachloro-m-xylene

R.T.: 4.107 min  
 Delta R.T.: 0.001 min  
 Response: 25376035  
 Conc: 9.93 ng/ml



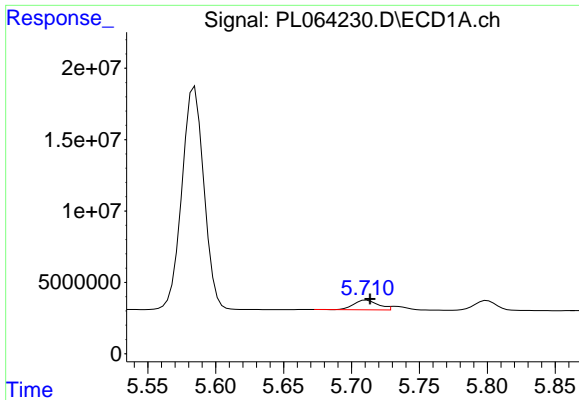
#12 4,4'-DDE

R.T.: 5.585 min  
 Delta R.T.: -0.001 min  
 Response: 175924150  
 Conc: 49.94 ng/ml



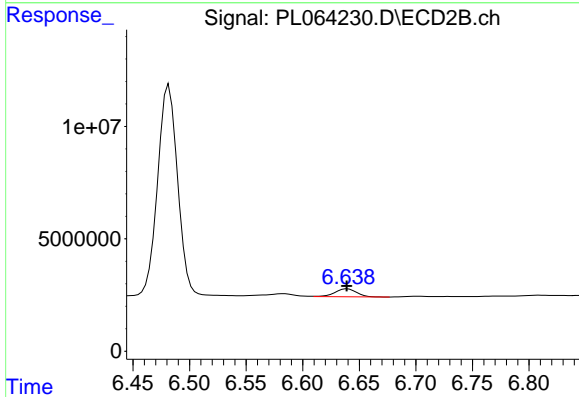
#12 4,4'-DDE

R.T.: 6.482 min  
 Delta R.T.: 0.001 min  
 Response: 115779991  
 Conc: 43.47 ng/ml

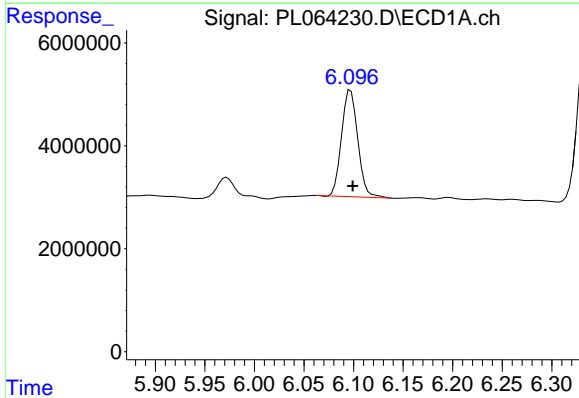


#13 Dieldrin  
 R.T.: 5.711 min  
 Delta R.T.: -0.002 min  
 Response: 8354085  
 Conc: 2.25 ng/ml

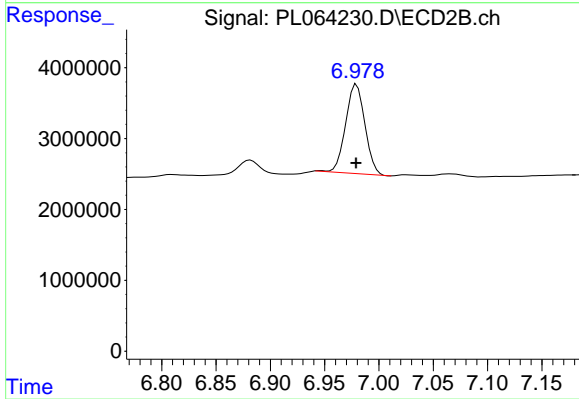
Instrument :  
 ECD\_L  
 ClientSampleId :  
 BASIN-1DL



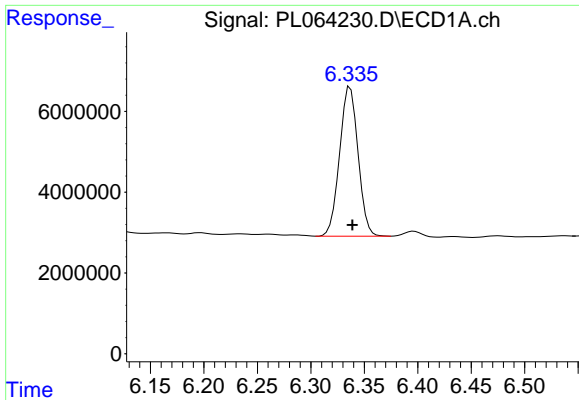
#13 Dieldrin  
 R.T.: 6.639 min  
 Delta R.T.: 0.000 min  
 Response: 4757120  
 Conc: 1.69 ng/ml



#16 4,4'-DDD  
 R.T.: 6.097 min  
 Delta R.T.: -0.002 min  
 Response: 23566354  
 Conc: 8.08 ng/ml

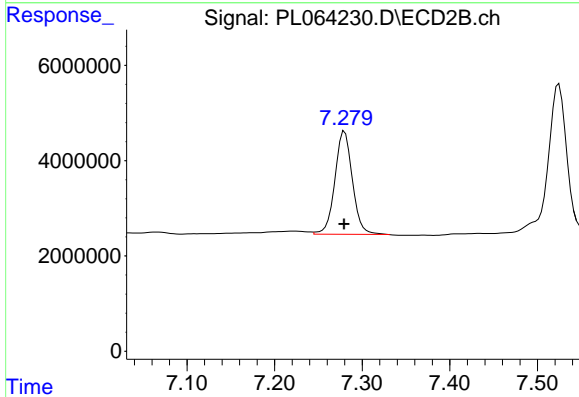


#16 4,4'-DDD  
 R.T.: 6.979 min  
 Delta R.T.: 0.000 min  
 Response: 15577923  
 Conc: 7.03 ng/ml

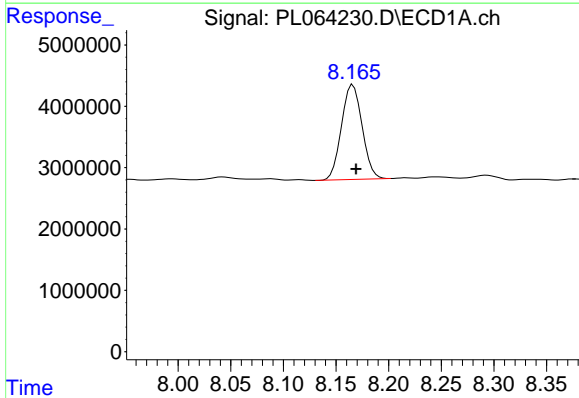


#17 4,4'-DDT  
 R.T.: 6.337 min  
 Delta R.T.: -0.002 min  
 Response: 44415037  
 Conc: 14.88 ng/ml

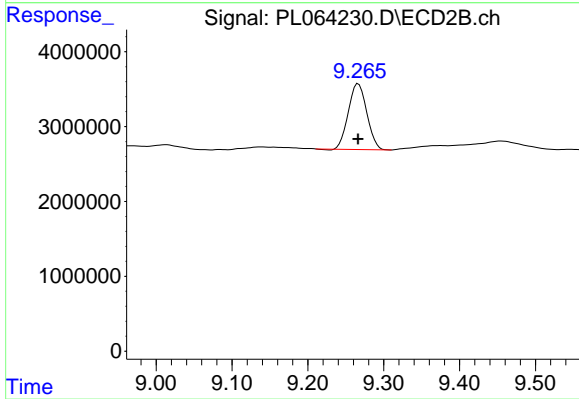
**Instrument :**  
 ECD\_L  
**ClientSampled :**  
 BASIN-1DL



#17 4,4'-DDT  
 R.T.: 7.280 min  
 Delta R.T.: 0.000 min  
 Response: 30064061  
 Conc: 13.27 ng/ml



#28 Decachlorobiphenyl  
 R.T.: 8.166 min  
 Delta R.T.: -0.003 min  
 Response: 21156552  
 Conc: 6.93 ng/ml



#28 Decachlorobiphenyl  
 R.T.: 9.267 min  
 Delta R.T.: 0.000 min  
 Response: 14864722  
 Conc: 6.26 ng/ml