

Data Path : Z:\pestpcbsrv\HPCHEM1\ECD_L\Data\PL011921\
 Data File : PL064232.D
 Signal(s) : Signal #1: ECD1A.ch Signal #2: ECD2B.ch
 Acq On : 19 Jan 2021 17:25
 Operator : AR\AJ
 Sample : M1160-11DL 2X
 Misc :
 ALS Vial : 23 Sample Multiplier: 1

Instrument :
 ECD_L
ClientSampleId :
 BASIN-5DL

Manual Integrations
APPROVED
 Ankita
 1/20/2021 11:35:30 AM

Integration File signal 1: autoint1.e
 Integration File signal 2: autoint2.e
 Quant Time: Jan 20 05:41:32 2021
 Quant Method : Z:\pestpcbsrv\HPCHEM1\ECD_L\methods\PL011221.M
 Quant Title : GC Extractables
 QLast Update : Mon Jan 18 13:25:12 2021
 Response via : Initial Calibration
 Integrator: ChemStation

Volume Inj. : 1 µl
 Signal #1 Phase : ZB-MR2 Signal #2 Phase: ZB-MR1
 Signal #1 Info : 30M x 0.32mm x0.2 Signal #2 Info : 30M x 0.32mm x0.5µm

Compound	RT#1	RT#2	Resp#1	Resp#2	ng/ml	ng/ml

System Monitoring Compounds						
1) SA Tetrachlo...	3.434	4.107	33148307	25842775	11.055	10.109
28) SA Decachlor...	8.166	9.267	25917555	21055289	8.492	8.871
Target Compounds						
12) B 4,4'-DDE	5.585	6.482	263.6E6	179.7E6	74.820	67.456
13) MA Dieldrin	5.710	6.640	11491699	7523967	3.090m	2.676
16) A 4,4'-DDD	6.098	6.980	27473395	19427038	9.420	8.765
17) MA 4,4'-DDT	6.337	7.280	99148437	66547934	33.212	29.381

(f)=RT Delta > 1/2 Window (#)=Amounts differ by > 25% (m)=manual int.

Data Path : Z:\pestpcbsrv\HPCHEM1\ECD_L\Data\PL011921\
 Data File : PL064232.D
 Signal(s) : Signal #1: ECD1A.ch Signal #2: ECD2B.ch
 Acq On : 19 Jan 2021 17:25
 Operator : AR\AJ
 Sample : M1160-11DL 2X
 Misc :
 ALS Vial : 23 Sample Multiplier: 1

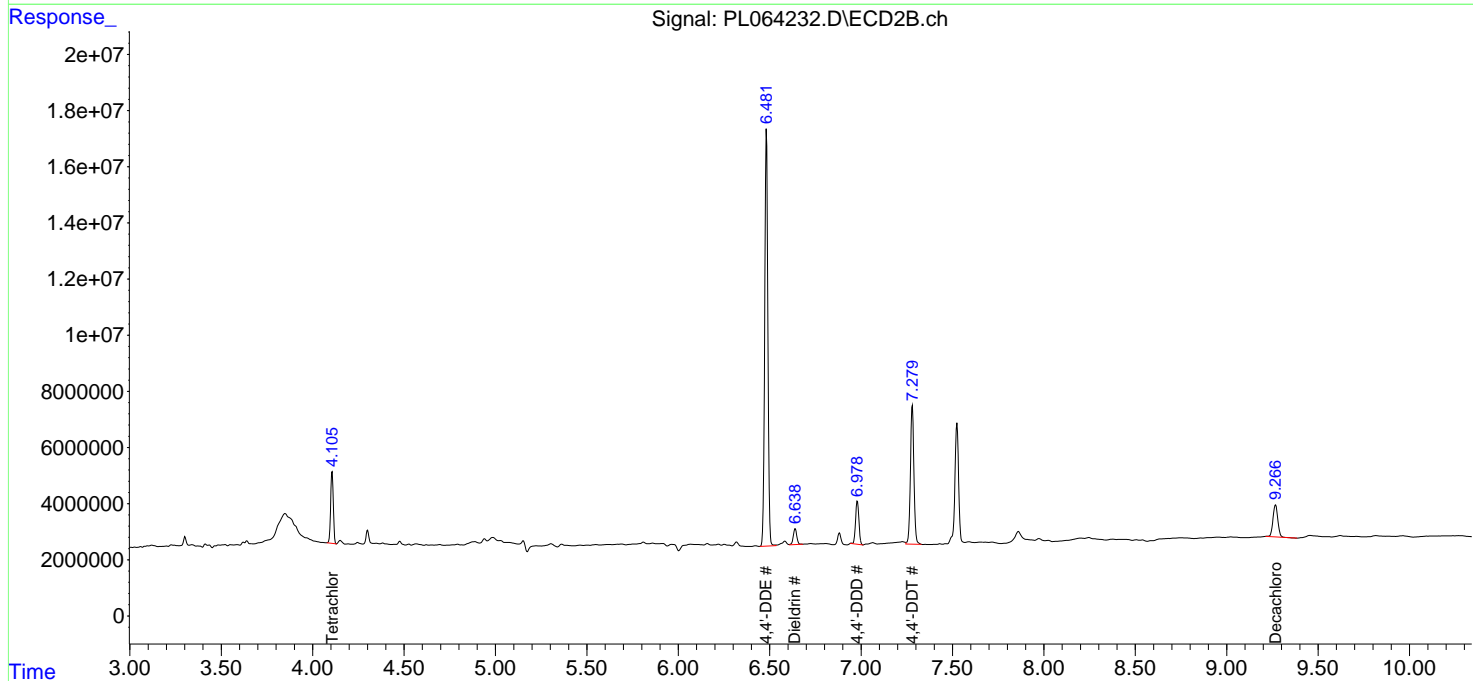
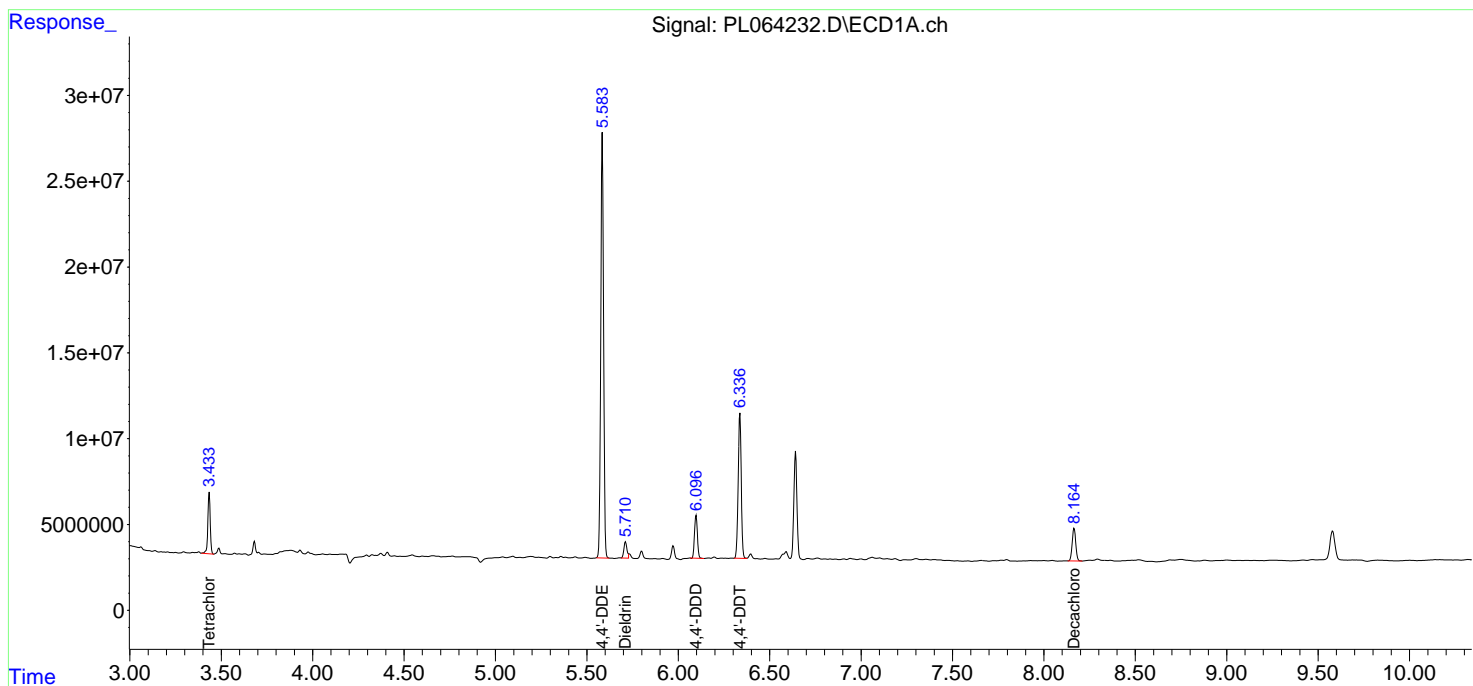
Instrument :
 ECD_L
 ClientSampled :
 BASIN-5DL

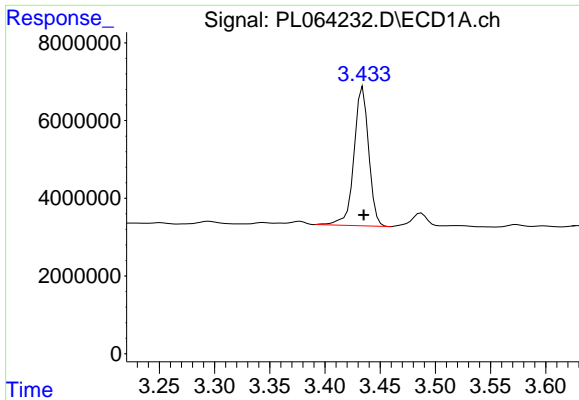
Manual Integrations
 APPROVED

Ankita
 1/20/2021 11:35:30 AM

Integration File signal 1: autoint1.e
 Integration File signal 2: autoint2.e
 Quant Time: Jan 20 05:41:32 2021
 Quant Method : Z:\pestpcbsrv\HPCHEM1\ECD_L\methods\PL011221.M
 Quant Title : GC Extractables
 QLast Update : Mon Jan 18 13:25:12 2021
 Response via : Initial Calibration
 Integrator: ChemStation

Volume Inj. : 1 µl
 Signal #1 Phase : ZB-MR2 Signal #2 Phase: ZB-MR1
 Signal #1 Info : 30M x 0.32mm x0.2 Signal #2 Info : 30M x 0.32mm x0.5µm

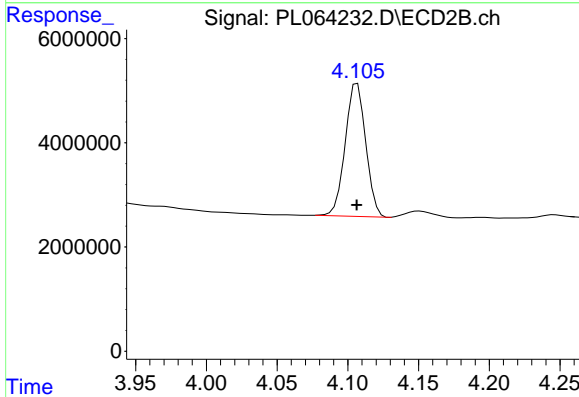




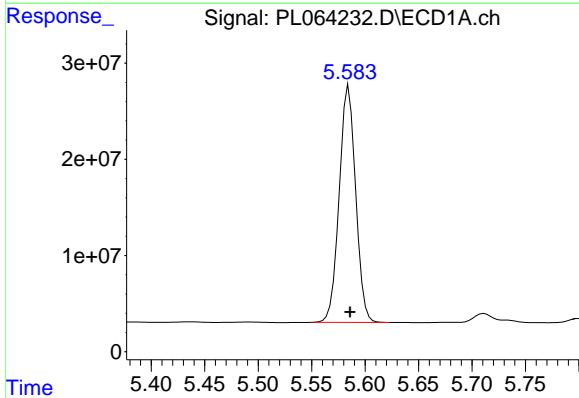
#1 Tetrachloro-m-xylene
 R.T.: 3.434 min
 Delta R.T.: 0.000 min
 Response: 33148307
 Conc: 11.05 ng/ml

Instrument :
 ECD_L
 ClientSampled :
 BASIN-5DL

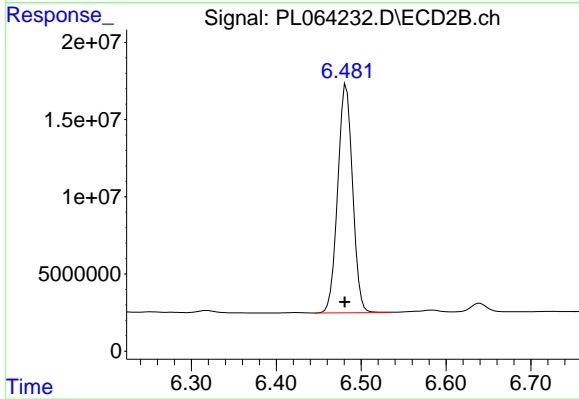
Manual Integrations
 APPROVED
 Ankita
 1/20/2021 11:35:30 AM



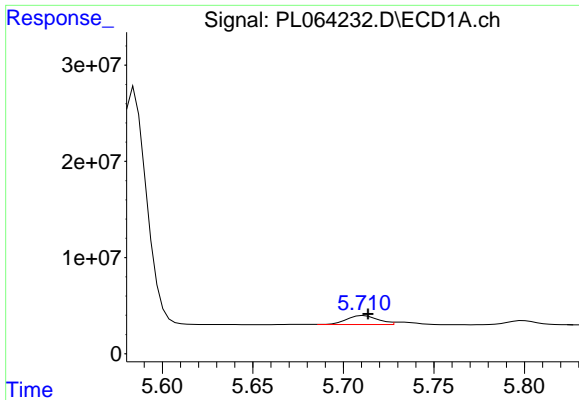
#1 Tetrachloro-m-xylene
 R.T.: 4.107 min
 Delta R.T.: 0.000 min
 Response: 25842775
 Conc: 10.11 ng/ml



#12 4,4'-DDE
 R.T.: 5.585 min
 Delta R.T.: -0.001 min
 Response: 263581109
 Conc: 74.82 ng/ml



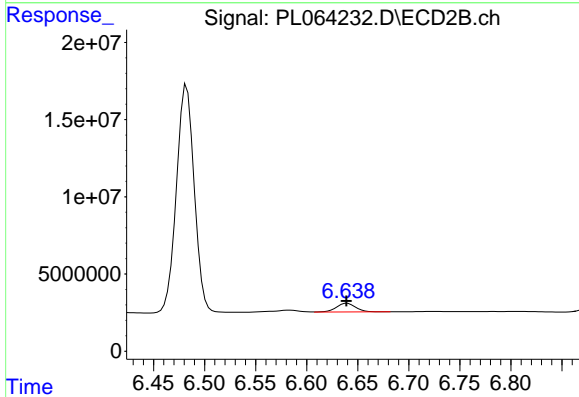
#12 4,4'-DDE
 R.T.: 6.482 min
 Delta R.T.: 0.002 min
 Response: 179674668
 Conc: 67.46 ng/ml



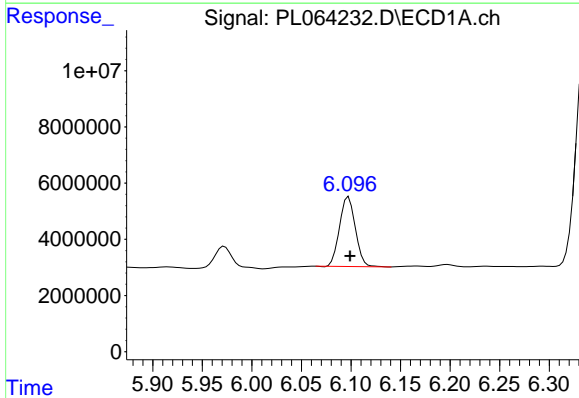
#13 Dieldrin
 R.T.: 5.710 min
 Delta R.T.: -0.004 min
 Response: 11491699
 Conc: 3.09 ng/ml m

Instrument :
 ECD_L
ClientSampled :
 BASIN-5DL

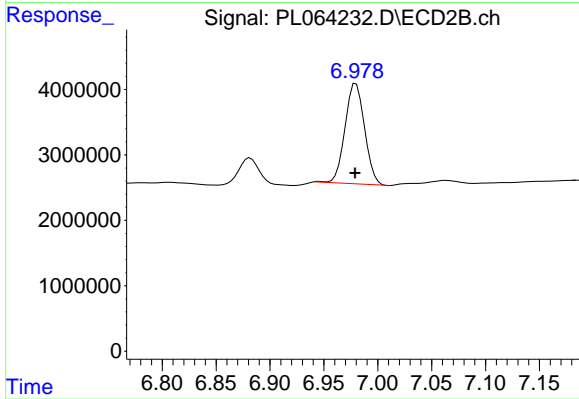
Manual Integrations
APPROVED
 Ankita
 1/20/2021 11:35:30 AM



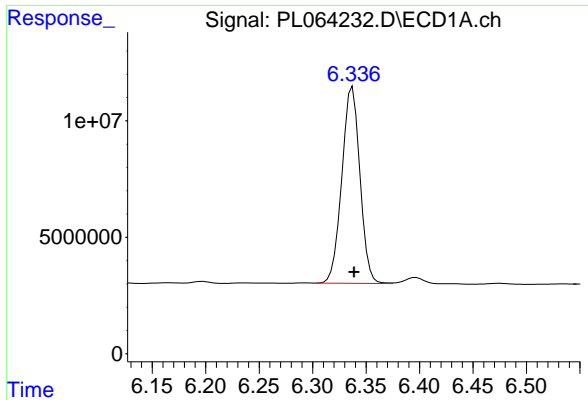
#13 Dieldrin
 R.T.: 6.640 min
 Delta R.T.: 0.000 min
 Response: 7523967
 Conc: 2.68 ng/ml



#16 4,4'-DDD
 R.T.: 6.098 min
 Delta R.T.: -0.002 min
 Response: 27473395
 Conc: 9.42 ng/ml



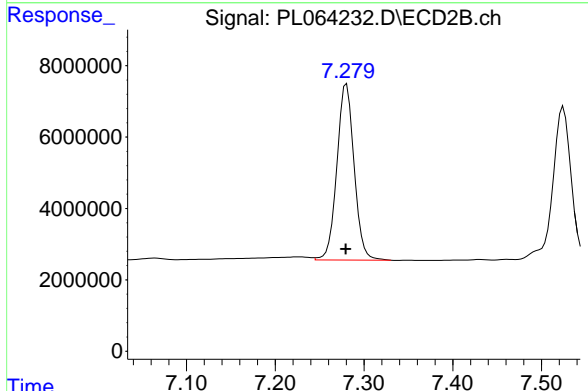
#16 4,4'-DDD
 R.T.: 6.980 min
 Delta R.T.: 0.000 min
 Response: 19427038
 Conc: 8.76 ng/ml



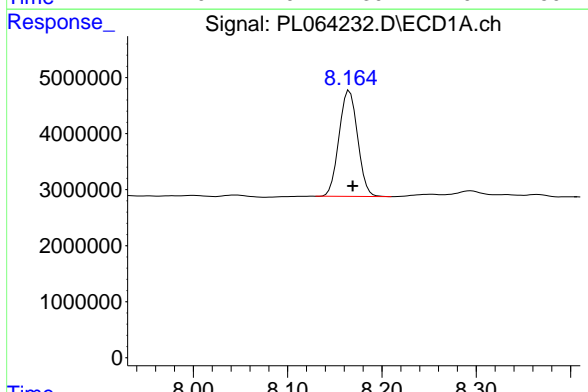
#17 4,4'-DDT
 R.T.: 6.337 min
 Delta R.T.: -0.001 min
 Response: 99148437
 Conc: 33.21 ng/ml

Instrument :
 ECD_L
ClientSampled :
 BASIN-5DL

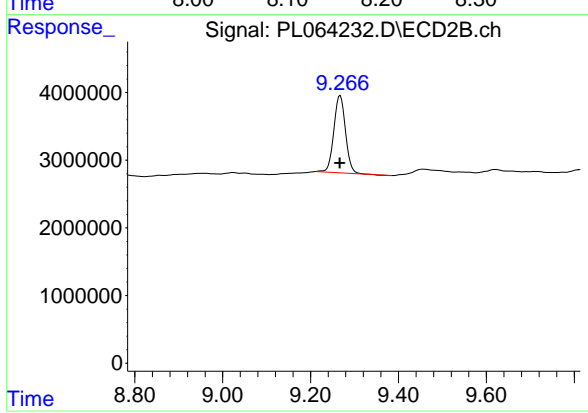
Manual Integrations
APPROVED
 Ankita
 1/20/2021 11:35:30 AM



#17 4,4'-DDT
 R.T.: 7.280 min
 Delta R.T.: 0.001 min
 Response: 66547934
 Conc: 29.38 ng/ml



#28 Decachlorobiphenyl
 R.T.: 8.166 min
 Delta R.T.: -0.003 min
 Response: 25917555
 Conc: 8.49 ng/ml



#28 Decachlorobiphenyl
 R.T.: 9.267 min
 Delta R.T.: 0.001 min
 Response: 21055289
 Conc: 8.87 ng/ml