

Data Path : Z:\pestpcbsrv\HPCHEM1\ECD\_L\Data\PL011923\  
 Data File : PL080395.D  
 Signal(s) : Signal #1: ECD1A.ch Signal #2: ECD2B.ch  
 Acq On : 19 Jan 2023 09:18  
 Operator : AR\AJ  
 Sample : PEM  
 Misc :  
 ALS Vial : 3 Sample Multiplier: 1

Instrument :  
 ECD\_L  
 ClientSampleId :  
 PEM

Integration File signal 1: autoint1.e  
 Integration File signal 2: autoint2.e  
 Quant Time: Jan 19 20:34:26 2023  
 Quant Method : Z:\pestpcbsrv\HPCHEM1\ECD\_L\methods\PL011223.M  
 Quant Title : GC Extractables  
 QLast Update : Thu Jan 12 01:47:41 2023  
 Response via : Initial Calibration  
 Integrator: ChemStation

Volume Inj. : 1 µl  
 Signal #1 Phase : ZB-MR2 Signal #2 Phase: ZB-MR1  
 Signal #1 Info : 30M x 0.32mm x0.2 Signal #2 Info : 30M x 0.32mm x0.5µm

Compound	RT#1	RT#2	Resp#1	Resp#2	ng/ml	ng/ml
-----						
System Monitoring Compounds						
1) SA Tetrachlo...	3.354	2.691	45935543	44129551	22.995	19.731
28) SA Decachlor...	8.791	7.839	35670710	44843157	24.177	19.949
Target Compounds						
2) A alpha-BHC	3.801	3.192	31284743	28183789	10.832	8.798
3) MA gamma-BHC...	4.130	3.521	30285168	27432081	11.329	9.087
6) B beta-BHC	4.326	3.816	15233591	14116378	12.888	10.488
12) B 4,4'-DDE	5.988	5.150	519680	408449	0.268m	0.174m#
14) MA Endrin	6.359	5.553	94703063	103.0E6	51.631m	43.282
16) A 4,4'-DDD	6.502	5.705	14422841	10747836	9.113	5.799 #
17) MA 4,4'-DDT	6.816	5.957	179.0E6	196.9E6	101.517	93.458
18) B Endrin al...	6.709	6.028	5080400	4588462	3.522	2.520 #
20) A Methoxychlor	7.293	6.535	233.0E6	260.0E6	261.504	216.275
21) B Endrin ke...	7.422	6.754	9096761	10166998	4.883	4.038
-----						

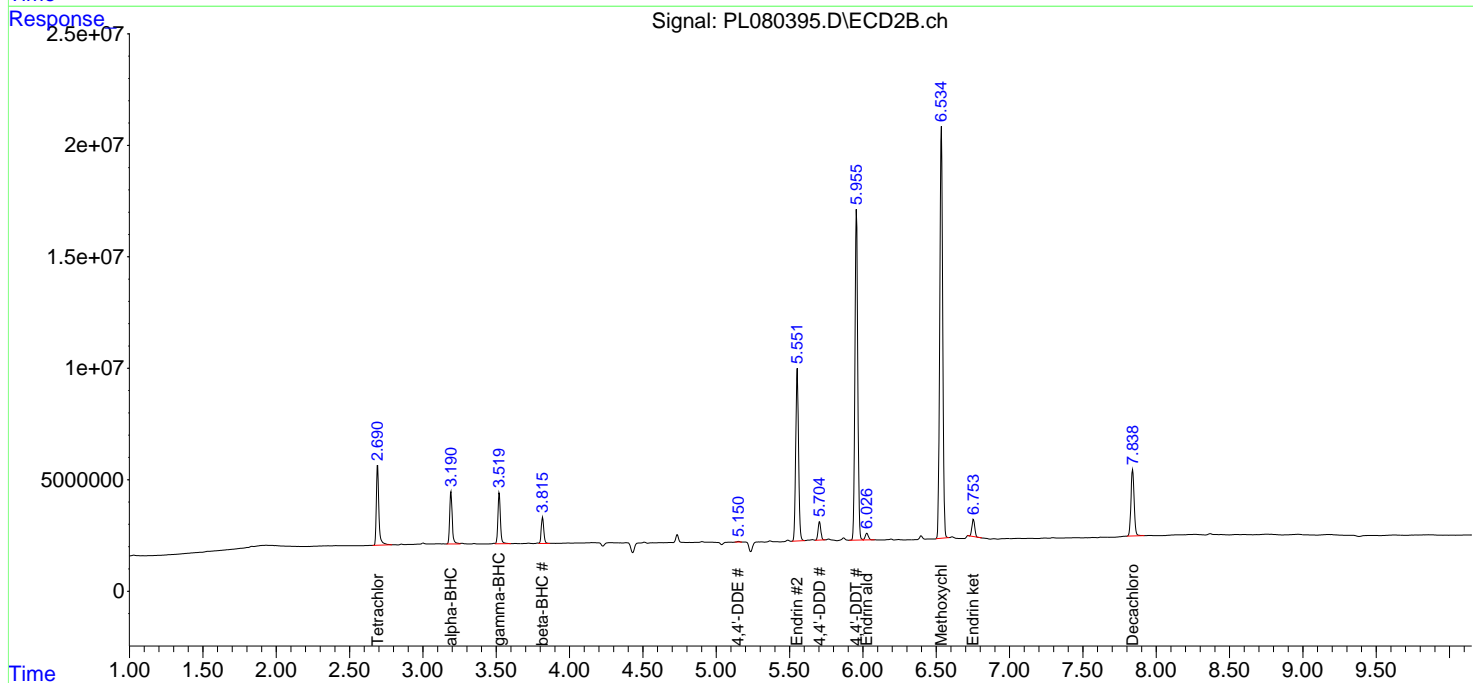
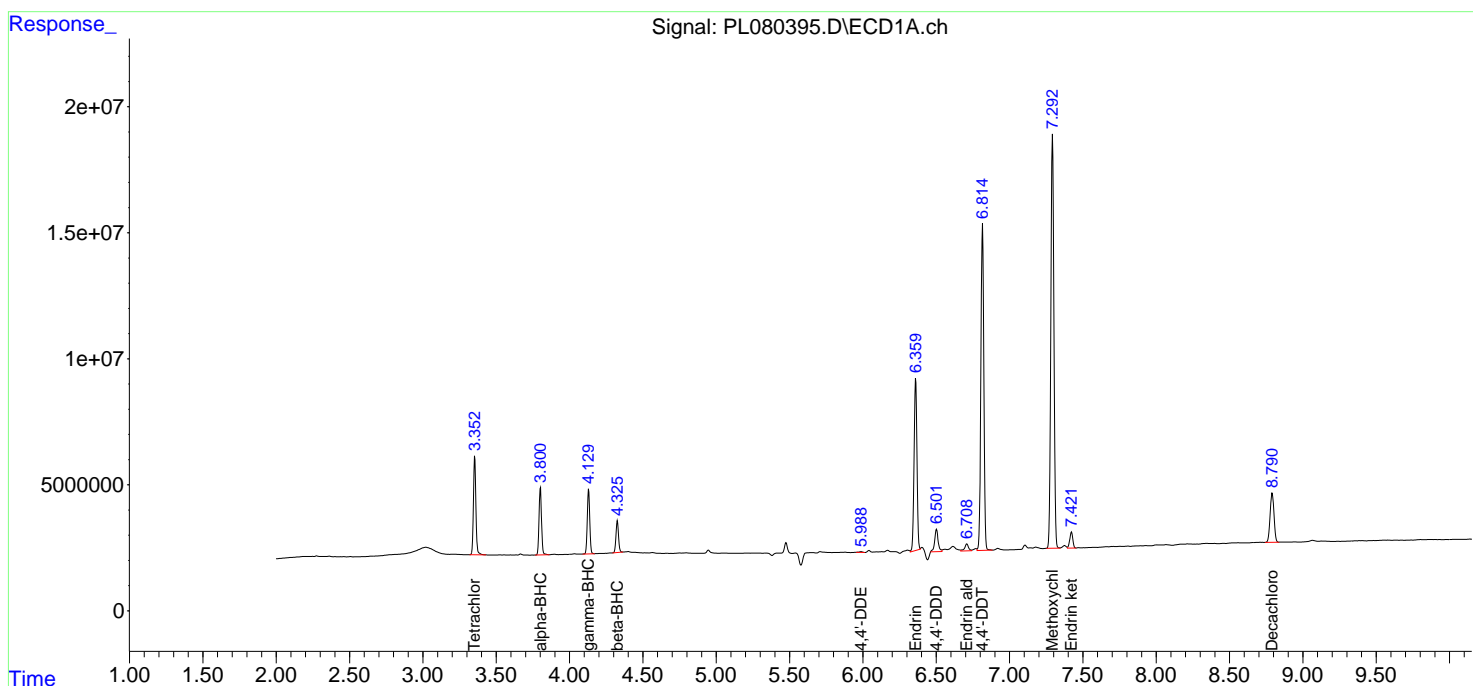
(f)=RT Delta > 1/2 Window (#)=Amounts differ by > 25% (m)=manual int.

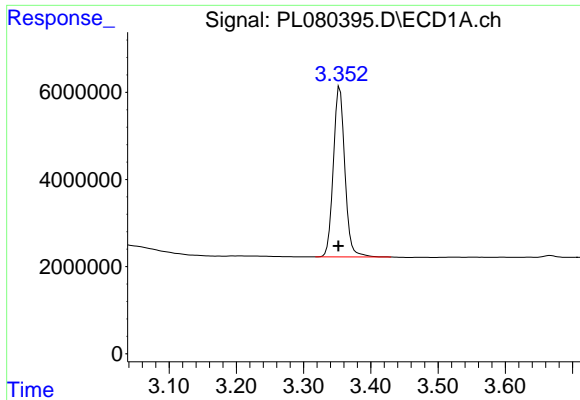
Data Path : Z:\pestpcbsrv\HPCHEM1\ECD\_L\Data\PL011923\  
 Data File : PL080395.D  
 Signal(s) : Signal #1: ECD1A.ch Signal #2: ECD2B.ch  
 Acq On : 19 Jan 2023 09:18  
 Operator : AR\AJ  
 Sample : PEM  
 Misc :  
 ALS Vial : 3 Sample Multiplier: 1

Instrument :  
 ECD\_L  
 ClientSampleId :  
 PEM

Integration File signal 1: autoint1.e  
 Integration File signal 2: autoint2.e  
 Quant Time: Jan 19 20:34:26 2023  
 Quant Method : Z:\pestpcbsrv\HPCHEM1\ECD\_L\methods\PL011223.M  
 Quant Title : GC Extractables  
 QLast Update : Thu Jan 12 01:47:41 2023  
 Response via : Initial Calibration  
 Integrator: ChemStation

Volume Inj. : 1 µl  
 Signal #1 Phase : ZB-MR2 Signal #2 Phase: ZB-MR1  
 Signal #1 Info : 30M x 0.32mm x0.2 Signal #2 Info : 30M x 0.32mm x0.5µm

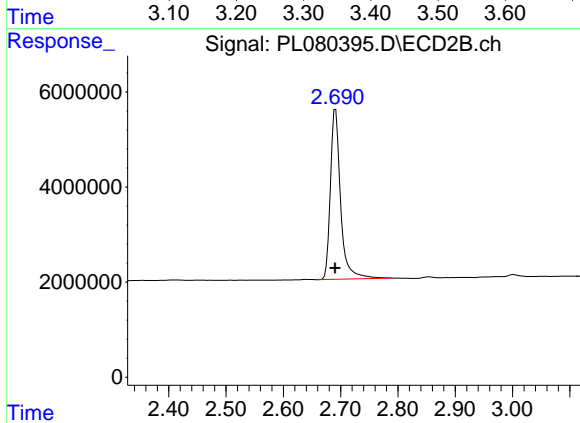




#1 Tetrachloro-m-xylene

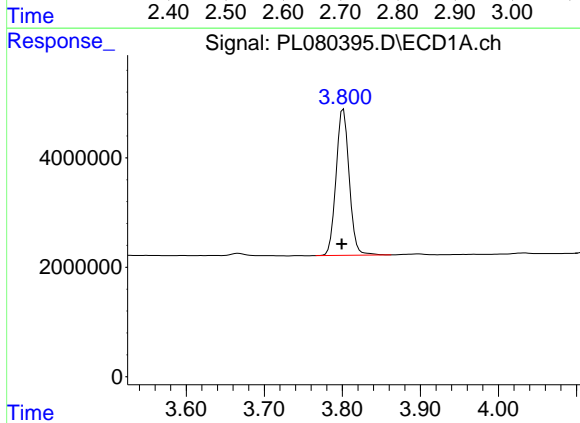
R.T.: 3.354 min  
 Delta R.T.: 0.002 min  
 Response: 45935543  
 Conc: 22.99 ng/ml

Instrument :  
 ECD\_L  
 ClientSampleId :  
 PEM



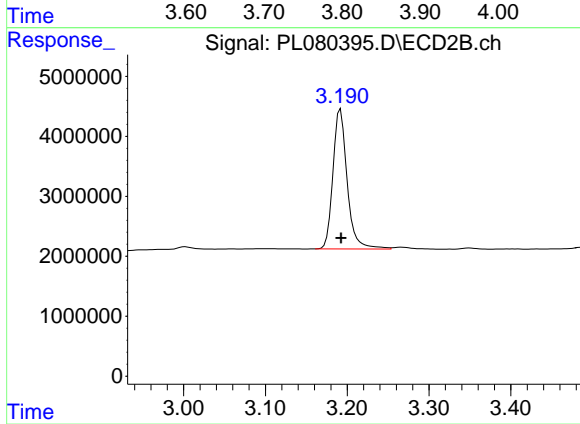
#1 Tetrachloro-m-xylene

R.T.: 2.691 min  
 Delta R.T.: 0.000 min  
 Response: 44129551  
 Conc: 19.73 ng/ml



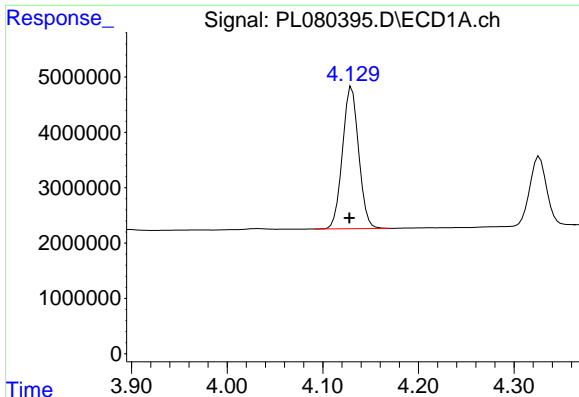
#2 alpha-BHC

R.T.: 3.801 min  
 Delta R.T.: 0.002 min  
 Response: 31284743  
 Conc: 10.83 ng/ml



#2 alpha-BHC

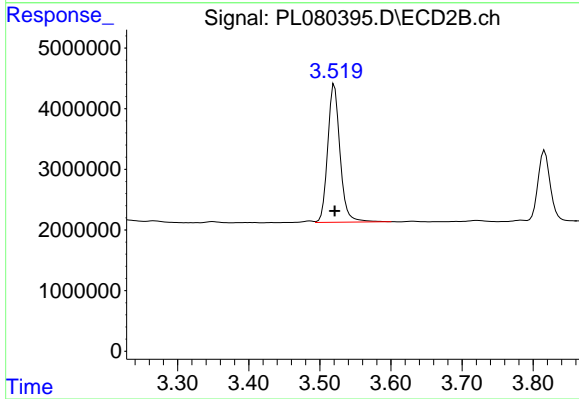
R.T.: 3.192 min  
 Delta R.T.: 0.000 min  
 Response: 28183789  
 Conc: 8.80 ng/ml



#3 gamma-BHC (Lindane)

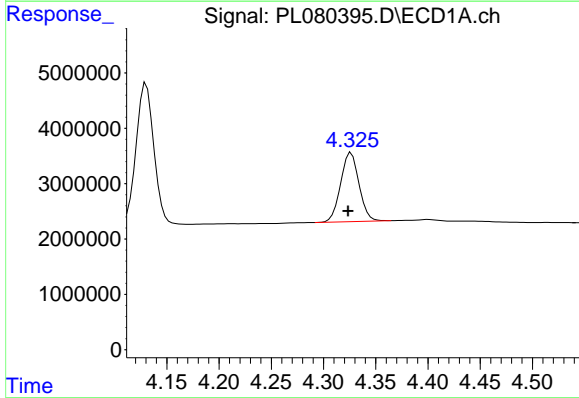
R.T.: 4.130 min  
 Delta R.T.: 0.003 min  
 Response: 30285168  
 Conc: 11.33 ng/ml

Instrument :  
 ECD\_L  
 ClientSampleId :  
 PEM



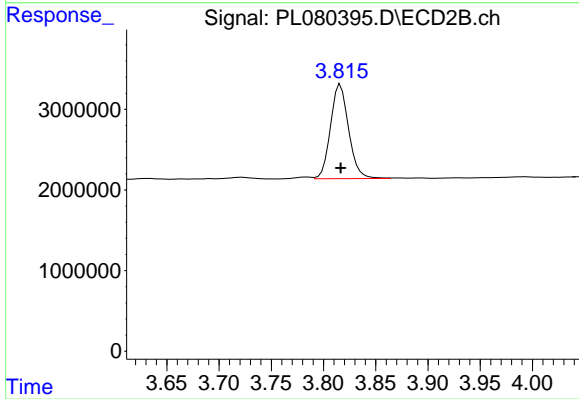
#3 gamma-BHC (Lindane)

R.T.: 3.521 min  
 Delta R.T.: 0.000 min  
 Response: 27432081  
 Conc: 9.09 ng/ml



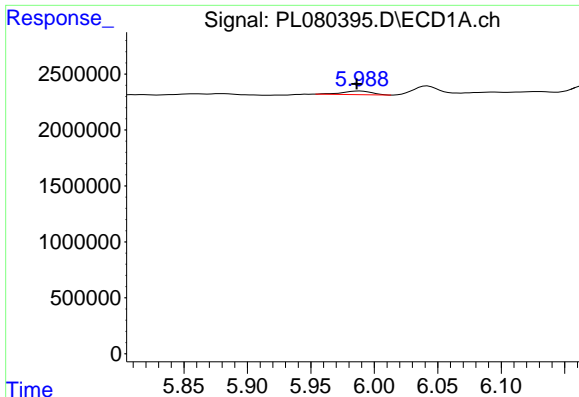
#6 beta-BHC

R.T.: 4.326 min  
 Delta R.T.: 0.003 min  
 Response: 15233591  
 Conc: 12.89 ng/ml



#6 beta-BHC

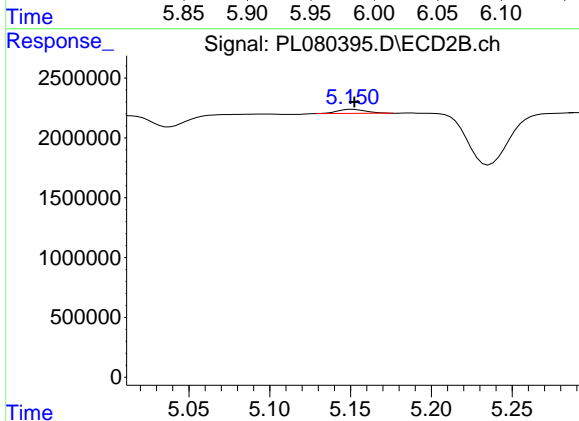
R.T.: 3.816 min  
 Delta R.T.: 0.000 min  
 Response: 14116378  
 Conc: 10.49 ng/ml



#12 4,4'-DDE

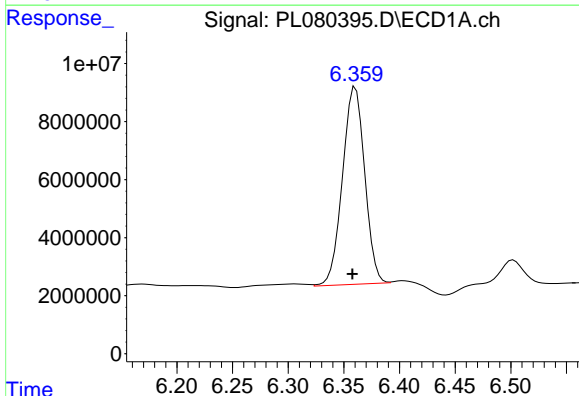
R.T.: 5.988 min  
 Delta R.T.: 0.002 min  
 Response: 519680  
 Conc: 0.27 ng/ml

Instrument :  
 ECD\_L  
 ClientSampleId :  
 PEM



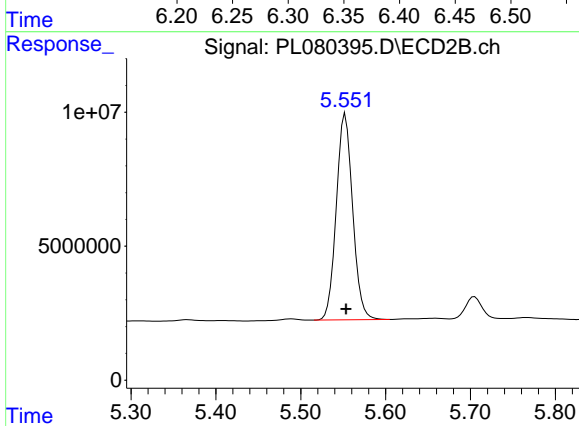
#12 4,4'-DDE

R.T.: 5.150 min  
 Delta R.T.: -0.003 min  
 Response: 408449  
 Conc: 0.17 ng/ml m



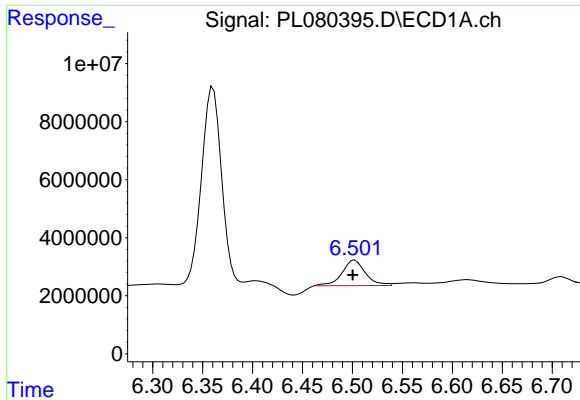
#14 Endrin

R.T.: 6.359 min  
 Delta R.T.: 0.001 min  
 Response: 94703063  
 Conc: 51.63 ng/ml m



#14 Endrin

R.T.: 5.553 min  
 Delta R.T.: 0.000 min  
 Response: 102980164  
 Conc: 43.28 ng/ml

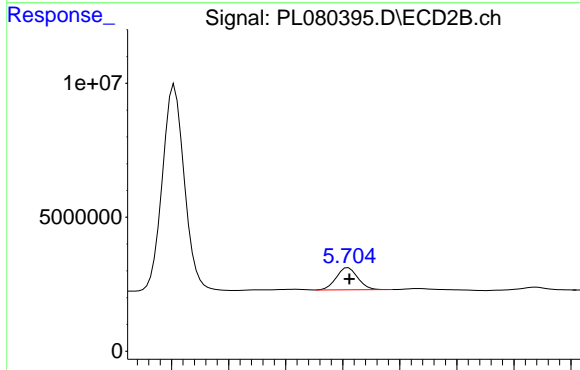


#16 4,4'-DDD

R.T.: 6.502 min  
 Delta R.T.: 0.002 min  
 Response: 14422841  
 Conc: 9.11 ng/ml

Instrument :  
 ECD\_L  
 ClientSampleId :  
 PEM

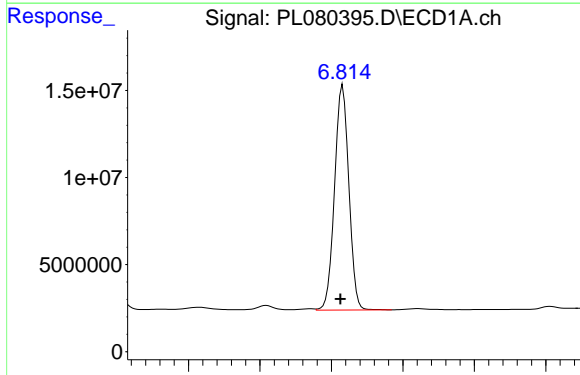
Time 6.30 6.35 6.40 6.45 6.50 6.55 6.60 6.65 6.70



#16 4,4'-DDD

R.T.: 5.705 min  
 Delta R.T.: -0.001 min  
 Response: 10747836  
 Conc: 5.80 ng/ml

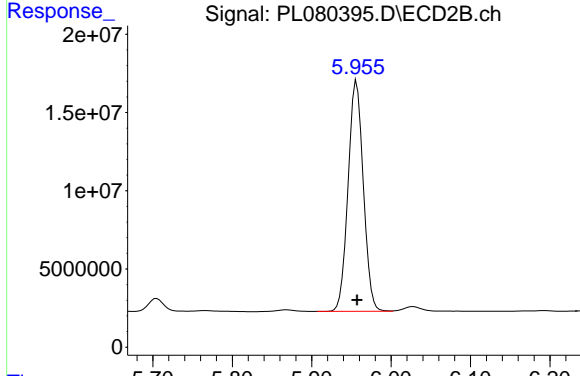
Time 5.55 5.60 5.65 5.70 5.75 5.80 5.85



#17 4,4'-DDT

R.T.: 6.816 min  
 Delta R.T.: 0.003 min  
 Response: 179032308  
 Conc: 101.52 ng/ml

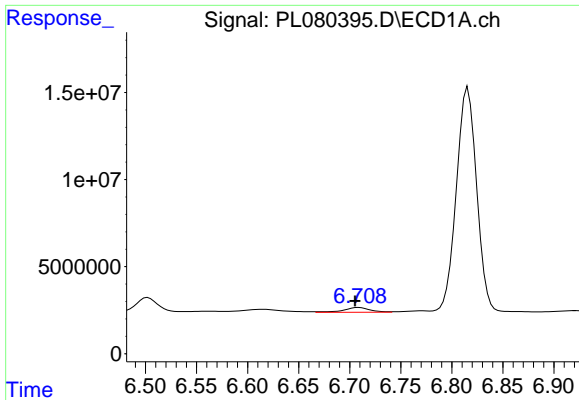
Time 6.60 6.70 6.80 6.90 7.00 7.10



#17 4,4'-DDT

R.T.: 5.957 min  
 Delta R.T.: 0.000 min  
 Response: 196941082  
 Conc: 93.46 ng/ml

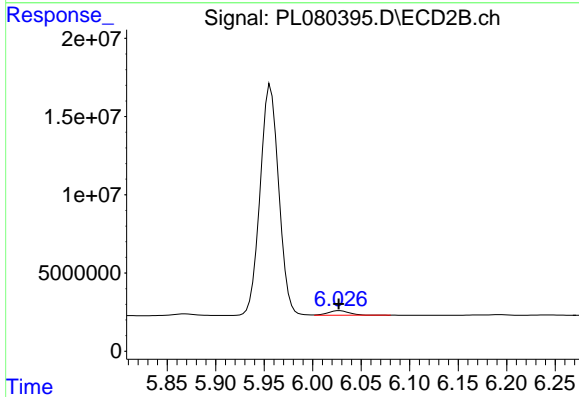
Time 5.70 5.80 5.90 6.00 6.10 6.20



#18 Endrin aldehyde

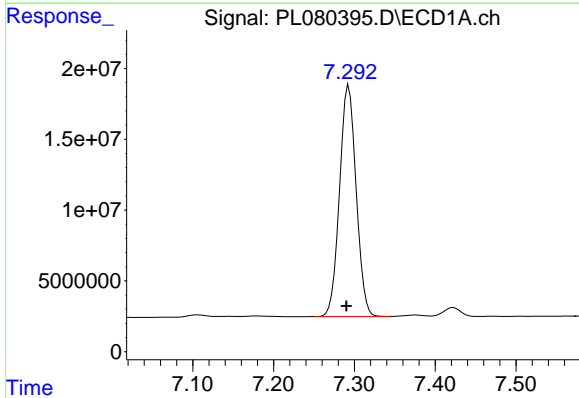
R.T.: 6.709 min  
 Delta R.T.: 0.004 min  
 Response: 5080400  
 Conc: 3.52 ng/ml

Instrument :  
 ECD\_L  
 ClientSampleId :  
 PEM



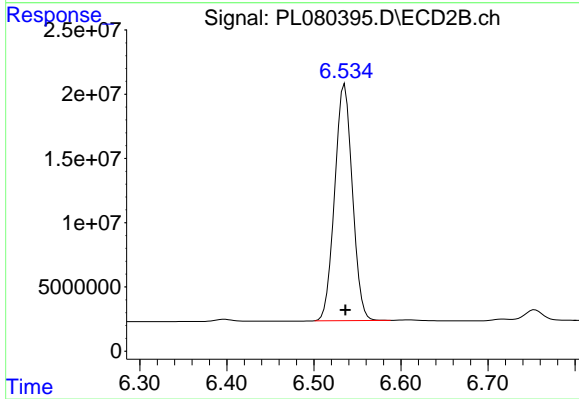
#18 Endrin aldehyde

R.T.: 6.028 min  
 Delta R.T.: 0.000 min  
 Response: 4588462  
 Conc: 2.52 ng/ml



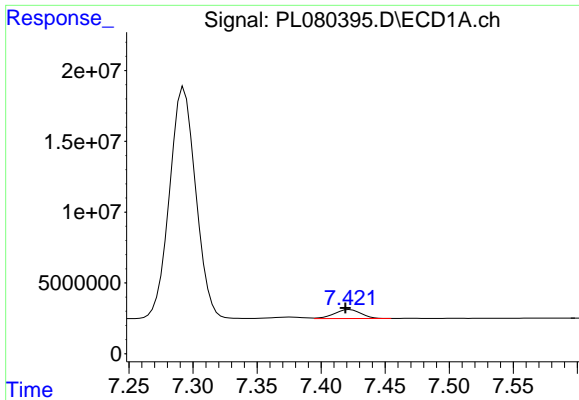
#20 Methoxychlor

R.T.: 7.293 min  
 Delta R.T.: 0.003 min  
 Response: 232988594  
 Conc: 261.50 ng/ml



#20 Methoxychlor

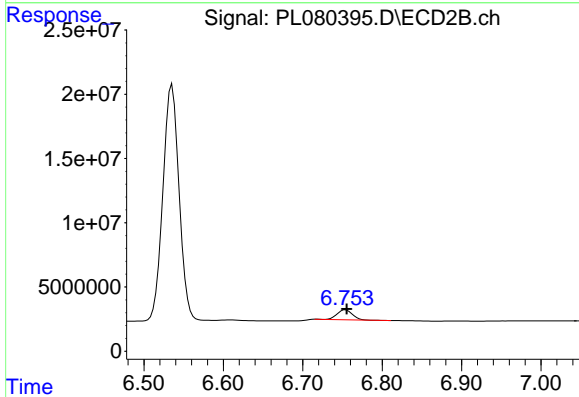
R.T.: 6.535 min  
 Delta R.T.: 0.000 min  
 Response: 259962849  
 Conc: 216.27 ng/ml



#21 Endrin ketone

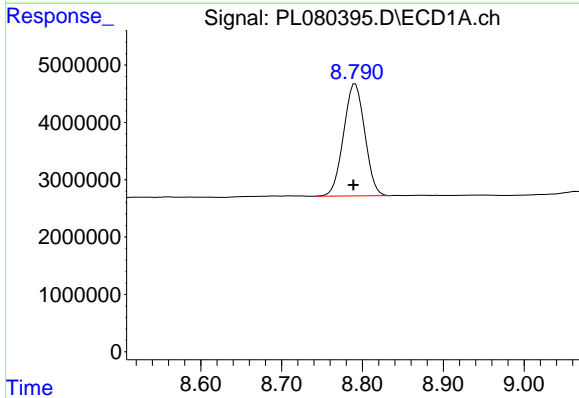
R.T.: 7.422 min  
 Delta R.T.: 0.004 min  
 Response: 9096761  
 Conc: 4.88 ng/ml

Instrument :  
 ECD\_L  
 ClientSampleId :  
 PEM



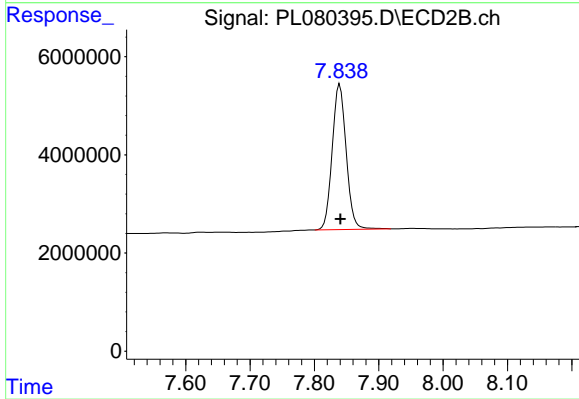
#21 Endrin ketone

R.T.: 6.754 min  
 Delta R.T.: -0.001 min  
 Response: 10166998  
 Conc: 4.04 ng/ml



#28 Decachlorobiphenyl

R.T.: 8.791 min  
 Delta R.T.: 0.002 min  
 Response: 35670710  
 Conc: 24.18 ng/ml



#28 Decachlorobiphenyl

R.T.: 7.839 min  
 Delta R.T.: -0.001 min  
 Response: 44843157  
 Conc: 19.95 ng/ml