

Data Path : Z:\pestpcbsrv\HPCHEM1\ECD_L\Data\PL011923\
 Data File : PL080397.D
 Signal(s) : Signal #1: ECD1A.ch Signal #2: ECD2B.ch
 Acq On : 19 Jan 2023 16:14
 Operator : AR\AJ
 Sample : PB150340BL
 Misc :
 ALS Vial : 5 Sample Multiplier: 1

Instrument :
 ECD_L
 ClientSampleId :
 PB150340BL

Integration File signal 1: autoint1.e
 Integration File signal 2: autoint2.e
 Quant Time: Jan 19 20:35:29 2023
 Quant Method : Z:\pestpcbsrv\HPCHEM1\ECD_L\methods\PL011223.M
 Quant Title : GC Extractables
 QLast Update : Thu Jan 12 01:47:41 2023
 Response via : Initial Calibration
 Integrator: ChemStation

Volume Inj. : 1 µl
 Signal #1 Phase : ZB-MR2 Signal #2 Phase: ZB-MR1
 Signal #1 Info : 30M x 0.32mm x0.2 Signal #2 Info : 30M x 0.32mm x0.5µm

Compound	RT#1	RT#2	Resp#1	Resp#2	ng/ml	ng/ml

System Monitoring Compounds						
1) SA Tetrachlo...	3.356	2.689	30394352	30167492	15.215	13.488
28) SA Decachlor...	8.793	7.839	25708057	28924589	17.424	12.868 #

Target Compounds

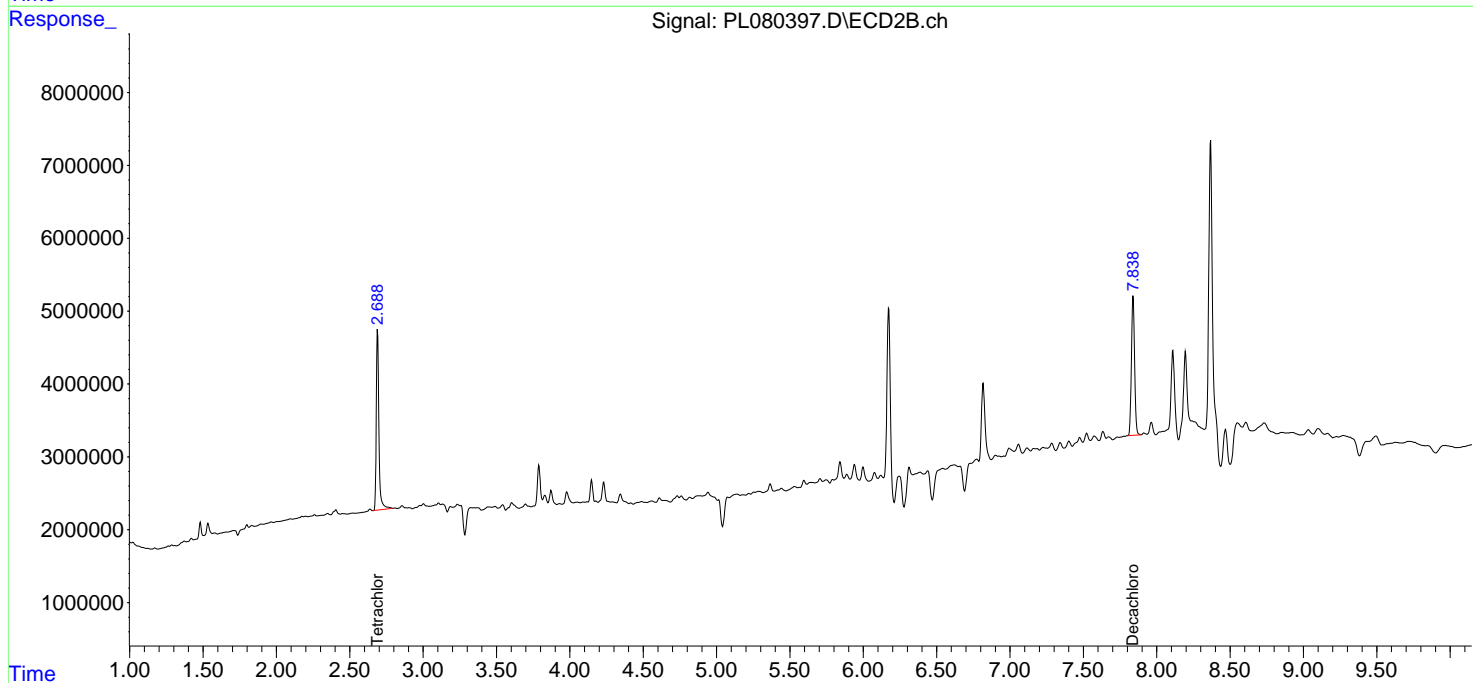
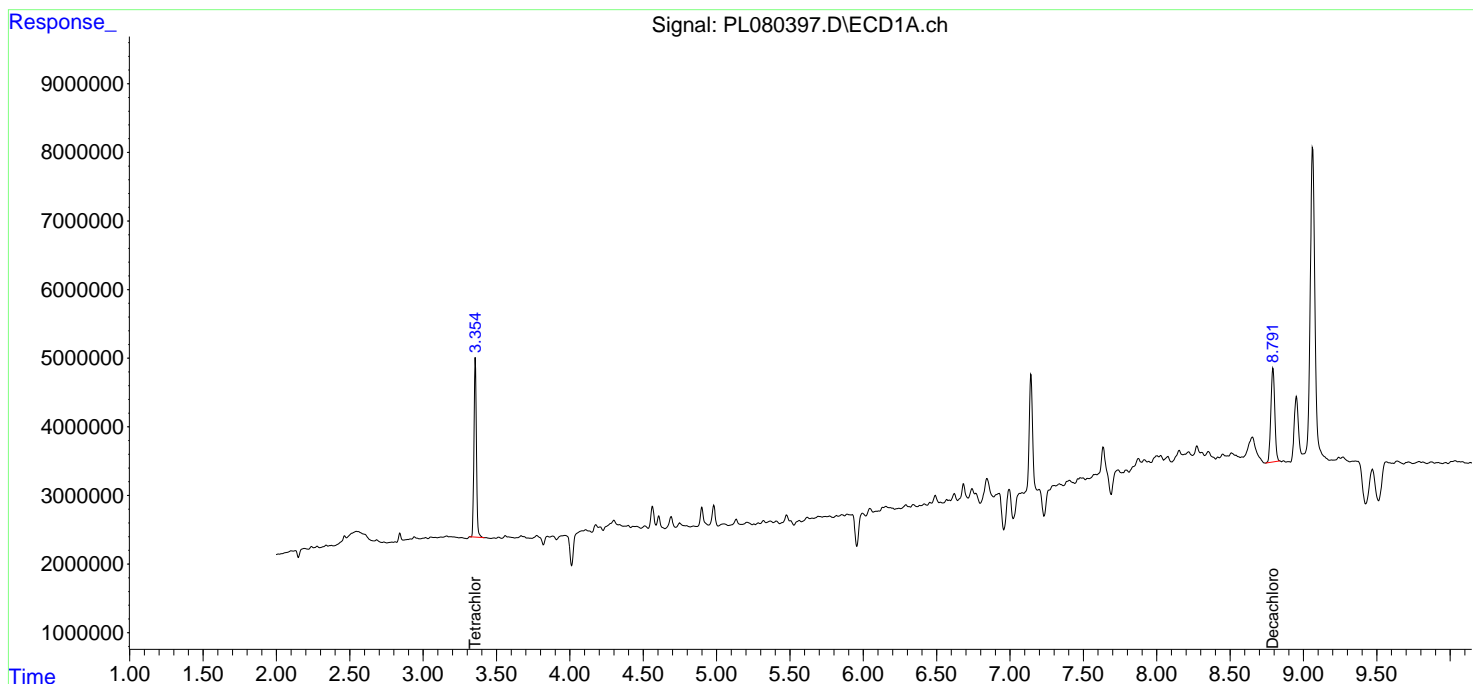
(f)=RT Delta > 1/2 Window (#)=Amounts differ by > 25% (m)=manual int.

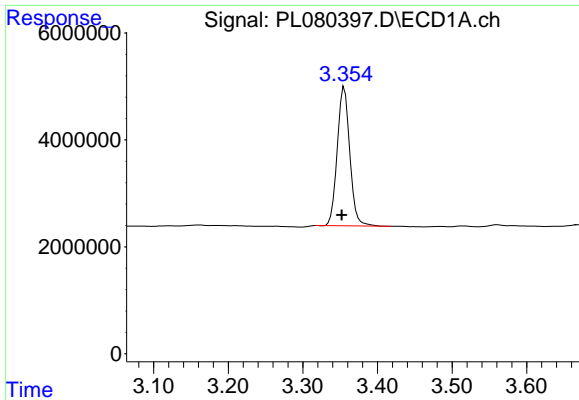
Data Path : Z:\pestpcbsrv\HPCHEM1\ECD_L\Data\PL011923\
 Data File : PL080397.D
 Signal(s) : Signal #1: ECD1A.ch Signal #2: ECD2B.ch
 Acq On : 19 Jan 2023 16:14
 Operator : AR\AJ
 Sample : PB150340BL
 Misc :
 ALS Vial : 5 Sample Multiplier: 1

Instrument :
 ECD_L
 ClientSampleId :
 PB150340BL

Integration File signal 1: autoint1.e
 Integration File signal 2: autoint2.e
 Quant Time: Jan 19 20:35:29 2023
 Quant Method : Z:\pestpcbsrv\HPCHEM1\ECD_L\methods\PL011223.M
 Quant Title : GC Extractables
 QLast Update : Thu Jan 12 01:47:41 2023
 Response via : Initial Calibration
 Integrator: ChemStation

Volume Inj. : 1 µl
 Signal #1 Phase : ZB-MR2 Signal #2 Phase: ZB-MR1
 Signal #1 Info : 30M x 0.32mm x0.2 Signal #2 Info : 30M x 0.32mm x0.5µm

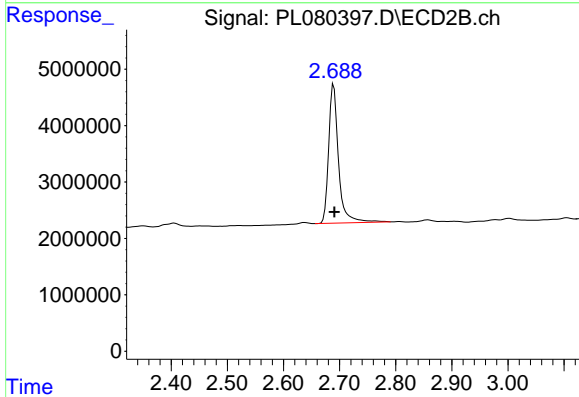




#1 Tetrachloro-m-xylene

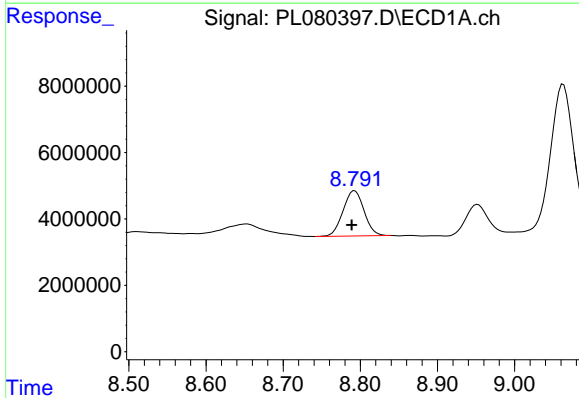
R.T.: 3.356 min
 Delta R.T.: 0.004 min
 Response: 30394352
 Conc: 15.21 ng/ml

Instrument :
 ECD_L
 ClientSampleId :
 PB150340BL



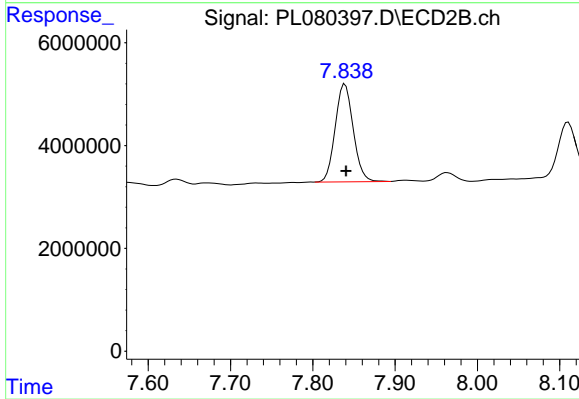
#1 Tetrachloro-m-xylene

R.T.: 2.689 min
 Delta R.T.: -0.001 min
 Response: 30167492
 Conc: 13.49 ng/ml



#28 Decachlorobiphenyl

R.T.: 8.793 min
 Delta R.T.: 0.004 min
 Response: 25708057
 Conc: 17.42 ng/ml



#28 Decachlorobiphenyl

R.T.: 7.839 min
 Delta R.T.: -0.001 min
 Response: 28924589
 Conc: 12.87 ng/ml