

Data Path : Z:\pestpcbsrv\HPCHEM1\ECD_L\Data\PL012022\
 Data File : PL072118.D
 Signal(s) : Signal #1: ECD1A.ch Signal #2: ECD2B.ch
 Acq On : 20 Jan 2022 12:23
 Operator : AR\AJ
 Sample : PB142145BS
 Misc : FOR HAROON MUGHAL
 ALS Vial : 10 Sample Multiplier: 1

Instrument :
 ECD_L
 ClientSampleId :

Integration File signal 1: autoint1.e
 Integration File signal 2: autoint2.e
 Quant Time: Jan 21 04:19:47 2022
 Quant Method : Z:\pestpcbsrv\HPCHEM1\ECD_L\methods\PL011722.M
 Quant Title : GC Extractables
 QLast Update : Tue Jan 18 10:53:59 2022
 Response via : Initial Calibration
 Integrator: ChemStation

Volume Inj. : 1 µl
 Signal #1 Phase : ZB-MR2 Signal #2 Phase: ZB-MR1
 Signal #1 Info : 30M x 0.32mm x0.2 Signal #2 Info : 30M x 0.32mm x0.5µm

	Compound	RT#1	RT#2	Resp#1	Resp#2	ng/ml	ng/ml

System Monitoring Compounds							
1)	SA Tetrachlo...	4.556	5.492	10722616	30956032	19.314	19.060
28)	SA Decachlor...	10.318	11.384	18237672	32885535	20.528	20.381
Target Compounds							
2)	A alpha-BHC	5.262	6.073	39008551	120.8E6	50.449	50.055
3)	MA gamma-BHC...	5.685	6.470	38029206	113.5E6	50.435	50.442
4)	MA Heptachlor	6.091	7.115	42877832	115.7E6	49.702	49.910
5)	MB Aldrin	6.416	7.486	39729996	112.1E6	50.314	50.715
6)	B beta-BHC	6.070	6.729	15778767	48957594	47.733	49.446
7)	B delta-BHC	6.328	6.995	39895333	118.1E6	50.364	47.992
8)	B Heptachlo...	6.994	7.953	38100029	103.2E6	50.051	51.540
9)	A Endosulfan I	7.395	8.358	35706854	92860947	50.241	51.302
10)	B gamma-Chl...	7.270	8.223	39005099	104.2E6	49.643	51.547
11)	B alpha-Chl...	7.340	8.303	38942809	101.3E6	49.640	51.088
12)	B 4,4'-DDE	7.555	8.494	36600884	98709331	50.695	52.193
13)	MA Dieldrin	7.681	8.647	38723533	100.5E6	51.112	51.141
14)	MA Endrin	7.972	8.887	35014195	84827168	49.973	51.162
15)	B Endosulfa...	8.285	9.122	35785680	86734561	48.130	50.577
16)	A 4,4'-DDD	8.141	9.034	30749241	77198553	52.453	53.993
17)	MA 4,4'-DDT	8.401	9.350	31576940	77997033	47.551	49.348
18)	B Endrin al...	8.474	9.257	29555305	69184878	51.874	55.733
19)	B Endosulfa...	8.705	9.495	35749298	80153757	48.759	51.343
20)	A Methoxychlor	8.997	9.839	19540024	36962503	46.315	44.622
21)	B Endrin ke...	9.223	9.992	40300590	86696781	48.398	52.385
22)	Mirex	9.404	10.454	38228141	67545970	51.766	54.133
24)	Chlordane-2	0.000	7.486	0	112.1E6	N.D.	1604.467 #
25)	Chlordane-3	7.270	8.223	39005099	104.2E6	509.813	374.924 #
26)	Chlordane-4	7.340	8.303	38942809	101.3E6	472.012	305.047 #
27)	Chlordane-5	8.285	9.182f	35785680	139048	1227.910	2.279 #

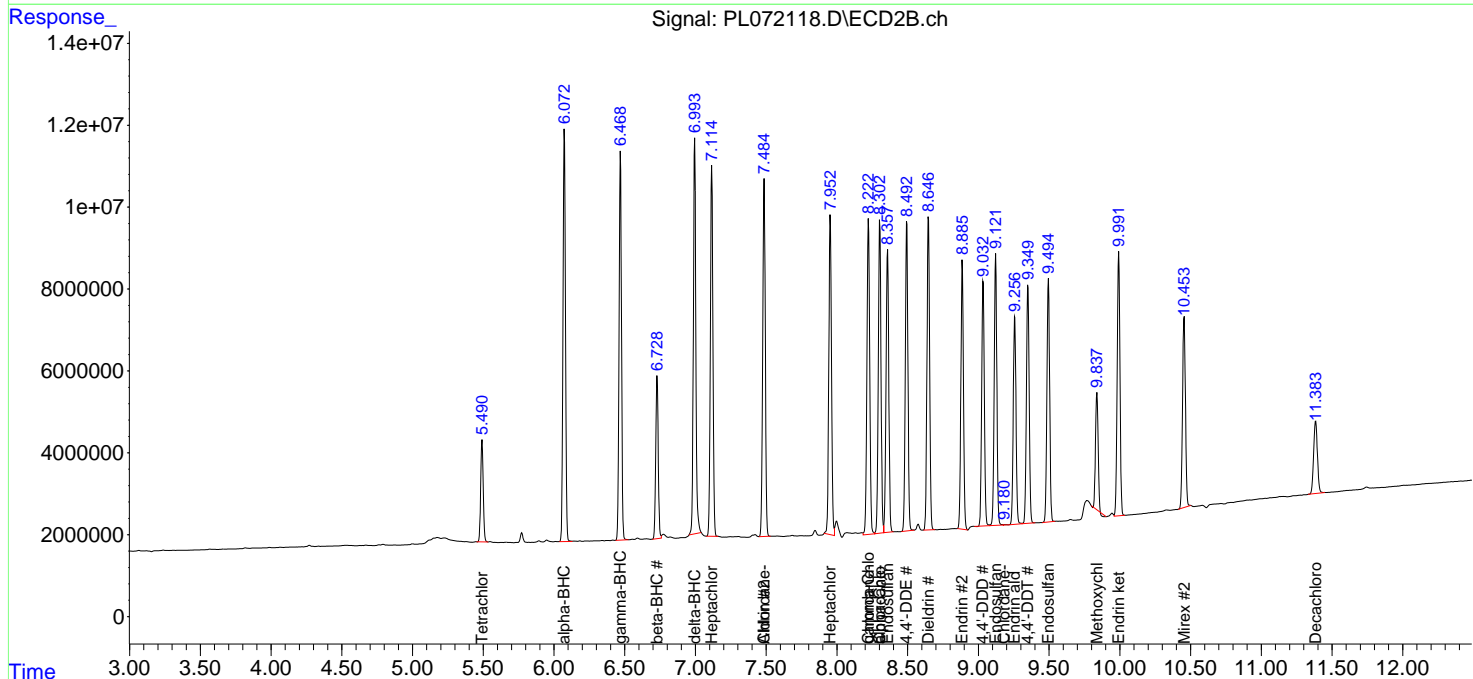
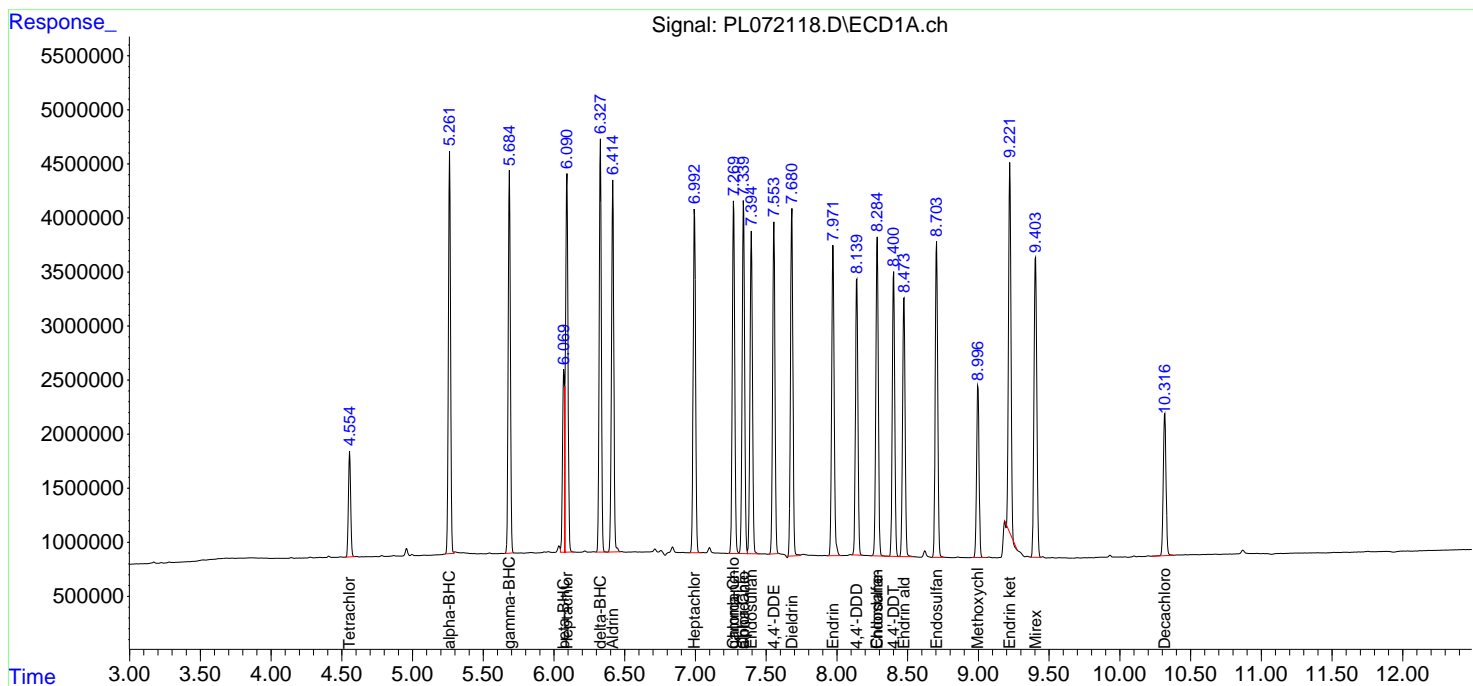
(f)=RT Delta > 1/2 Window (#)=Amounts differ by > 25% (m)=manual int.

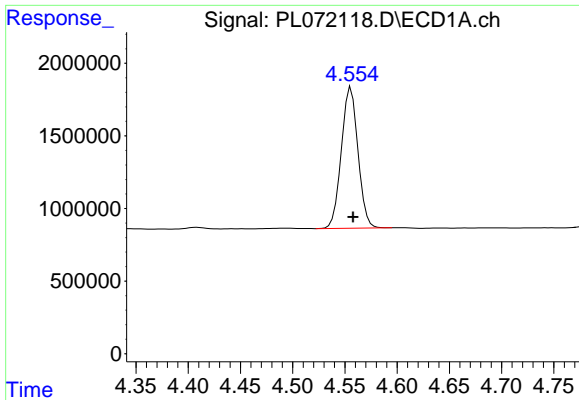
Data Path : Z:\pestpcbsrv\HPCHEM1\ECD_L\Data\PL012022\
 Data File : PL072118.D
 Signal(s) : Signal #1: ECD1A.ch Signal #2: ECD2B.ch
 Acq On : 20 Jan 2022 12:23
 Operator : AR\AJ
 Sample : PB142145BS
 Misc : FOR HAROON MUGHAL
 ALS Vial : 10 Sample Multiplier: 1

Instrument :
 ECD_L
 ClientSampleId :

Integration File signal 1: autoint1.e
 Integration File signal 2: autoint2.e
 Quant Time: Jan 21 04:19:47 2022
 Quant Method : Z:\pestpcbsrv\HPCHEM1\ECD_L\methods\PL011722.M
 Quant Title : GC Extractables
 QLast Update : Tue Jan 18 10:53:59 2022
 Response via : Initial Calibration
 Integrator: ChemStation

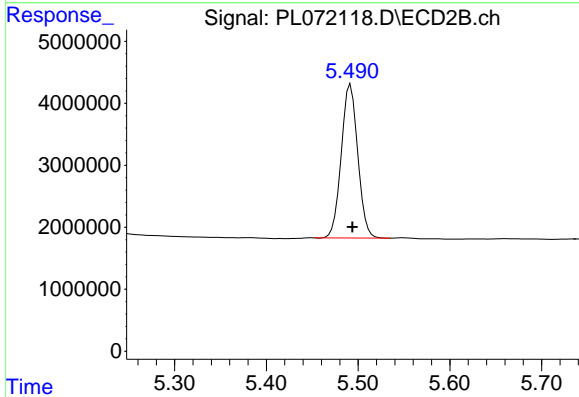
Volume Inj. : 1 µl
 Signal #1 Phase : ZB-MR2 Signal #2 Phase: ZB-MR1
 Signal #1 Info : 30M x 0.32mm x0.2 Signal #2 Info : 30M x 0.32mm x0.5µm



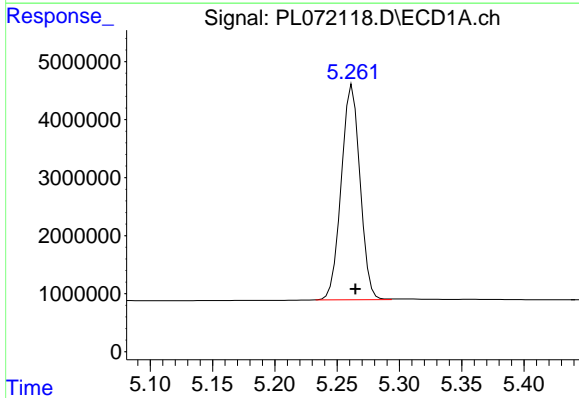


#1 Tetrachloro-m-xylene
 R.T.: 4.556 min
 Delta R.T.: -0.002 min
 Response: 10722616
 Conc: 19.31 ng/ml

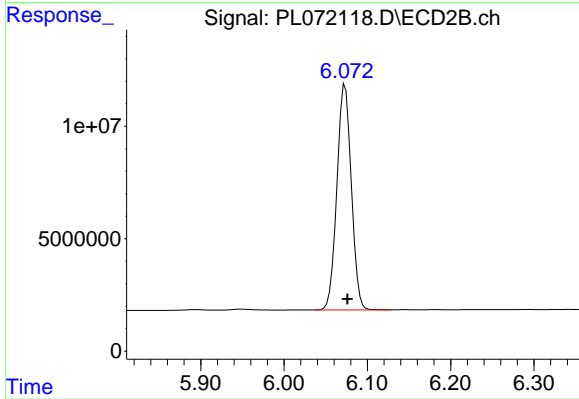
Instrument :
 ECD_L
 ClientSampleId :



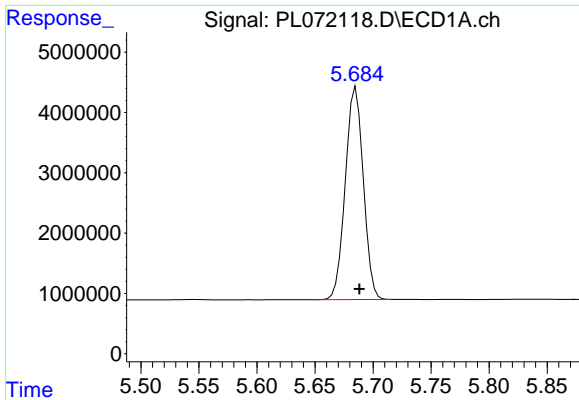
#1 Tetrachloro-m-xylene
 R.T.: 5.492 min
 Delta R.T.: -0.002 min
 Response: 30956032
 Conc: 19.06 ng/ml



#2 alpha-BHC
 R.T.: 5.262 min
 Delta R.T.: -0.002 min
 Response: 39008551
 Conc: 50.45 ng/ml

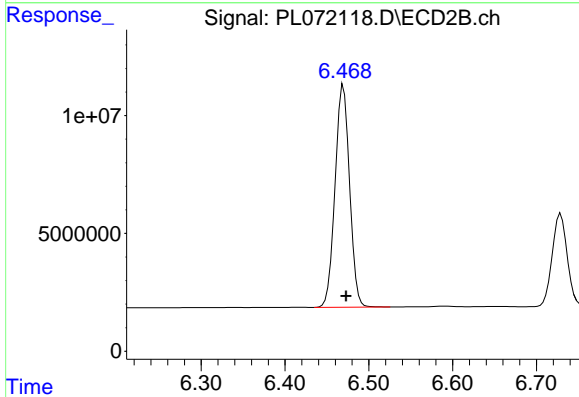


#2 alpha-BHC
 R.T.: 6.073 min
 Delta R.T.: -0.003 min
 Response: 120774719
 Conc: 50.05 ng/ml

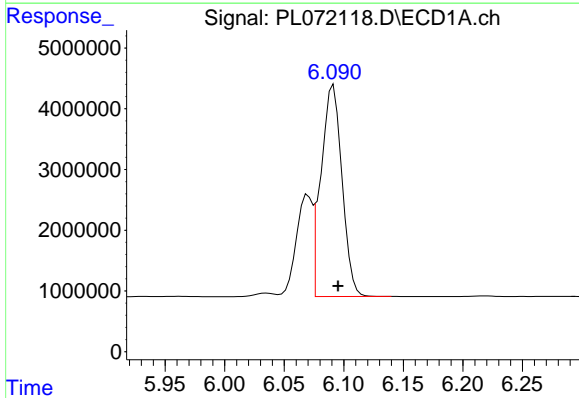


#3 gamma-BHC (Lindane)
 R.T.: 5.685 min
 Delta R.T.: -0.003 min
 Response: 38029206
 Conc: 50.44 ng/ml

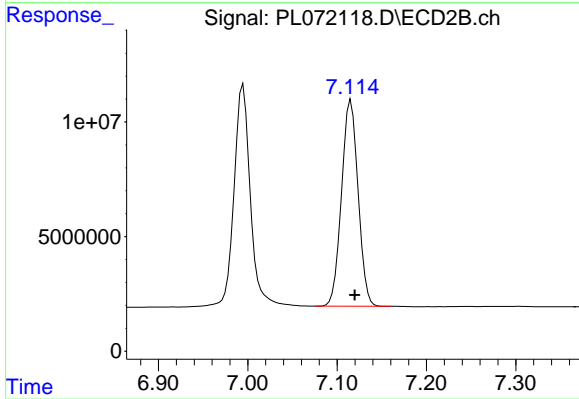
Instrument :
 ECD_L
 ClientSampleId :



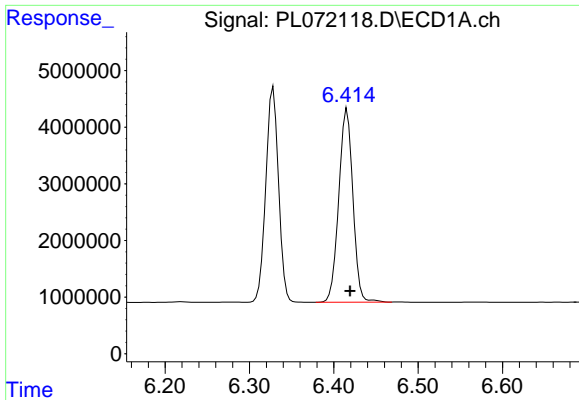
#3 gamma-BHC (Lindane)
 R.T.: 6.470 min
 Delta R.T.: -0.003 min
 Response: 113510479
 Conc: 50.44 ng/ml



#4 Heptachlor
 R.T.: 6.091 min
 Delta R.T.: -0.004 min
 Response: 42877832
 Conc: 49.70 ng/ml

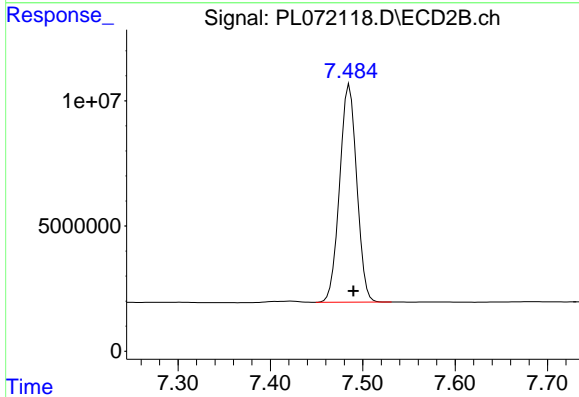


#4 Heptachlor
 R.T.: 7.115 min
 Delta R.T.: -0.004 min
 Response: 115715961
 Conc: 49.91 ng/ml

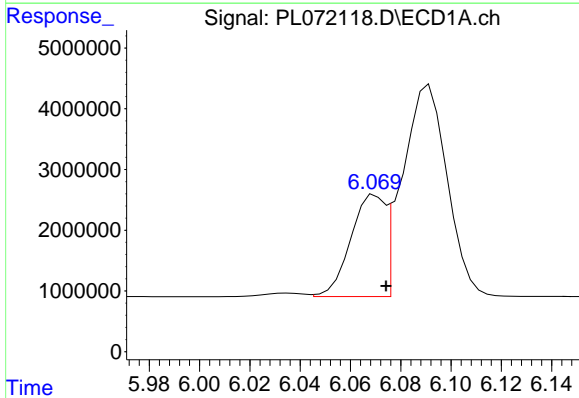


#5 Aldrin
 R.T.: 6.416 min
 Delta R.T.: -0.003 min
 Response: 39729996
 Conc: 50.31 ng/ml

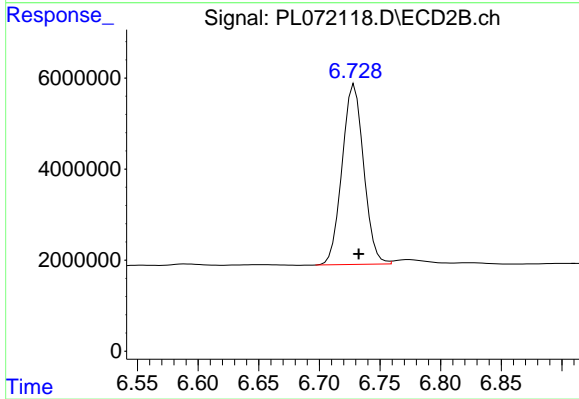
Instrument :
 ECD_L
 ClientSampleId :



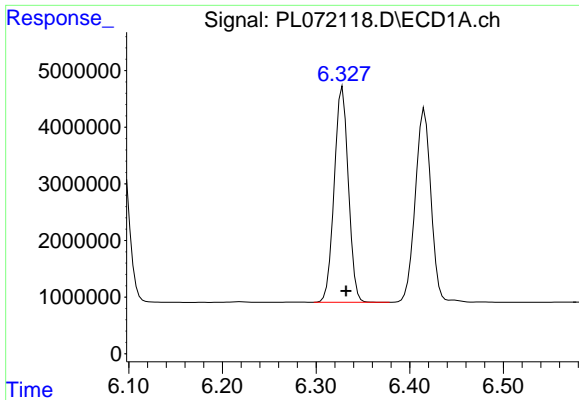
#5 Aldrin
 R.T.: 7.486 min
 Delta R.T.: -0.004 min
 Response: 112143076
 Conc: 50.72 ng/ml



#6 beta-BHC
 R.T.: 6.070 min
 Delta R.T.: -0.004 min
 Response: 15778767
 Conc: 47.73 ng/ml



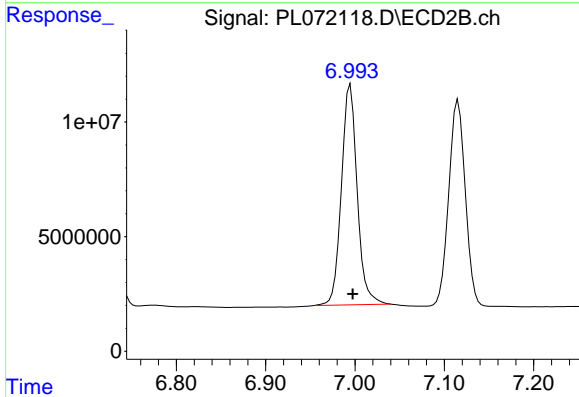
#6 beta-BHC
 R.T.: 6.729 min
 Delta R.T.: -0.003 min
 Response: 48957594
 Conc: 49.45 ng/ml



#7 delta-BHC

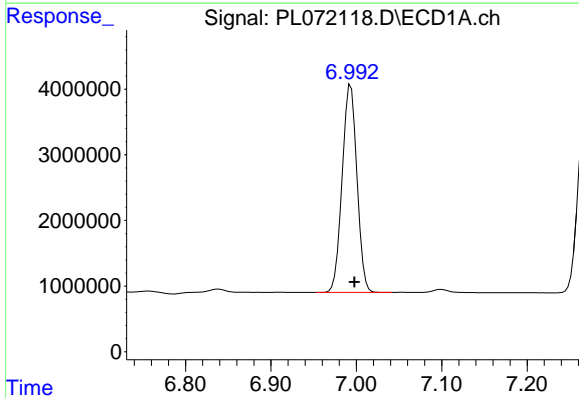
R.T.: 6.328 min
 Delta R.T.: -0.004 min
 Response: 39895333
 Conc: 50.36 ng/ml

Instrument :
 ECD_L
 ClientSampleId :



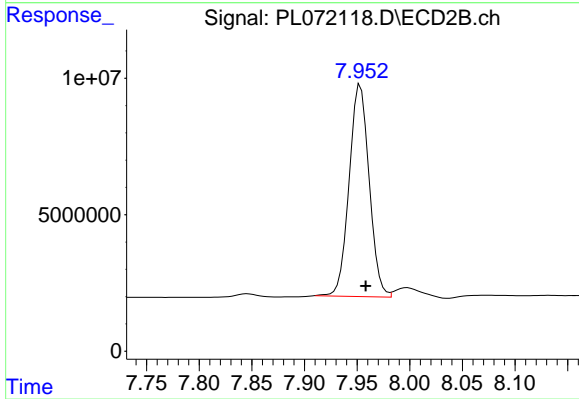
#7 delta-BHC

R.T.: 6.995 min
 Delta R.T.: -0.003 min
 Response: 118074553
 Conc: 47.99 ng/ml



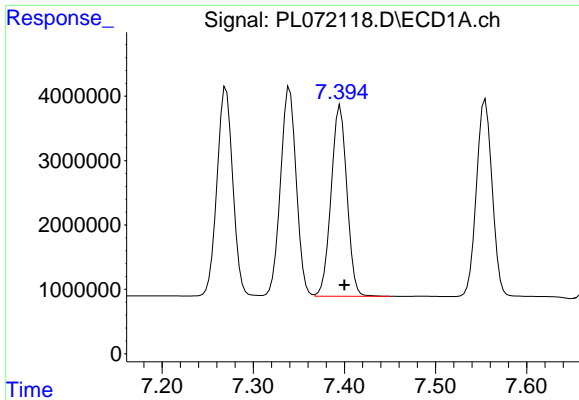
#8 Heptachlor epoxide

R.T.: 6.994 min
 Delta R.T.: -0.004 min
 Response: 38100029
 Conc: 50.05 ng/ml



#8 Heptachlor epoxide

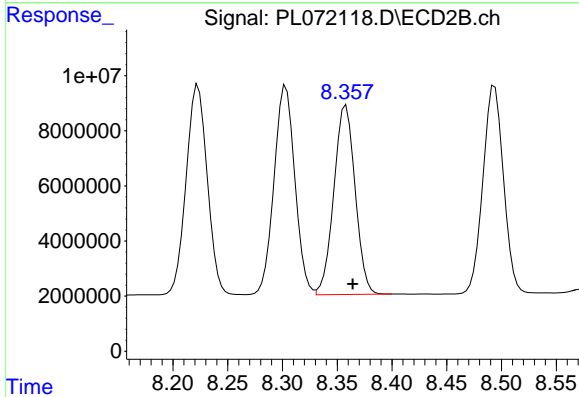
R.T.: 7.953 min
 Delta R.T.: -0.005 min
 Response: 103198409
 Conc: 51.54 ng/ml



#9 Endosulfan I

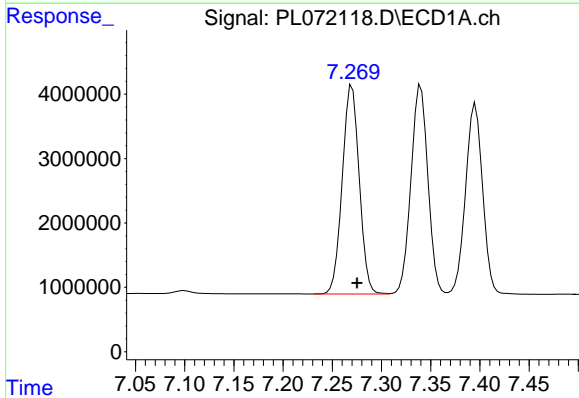
R.T.: 7.395 min
 Delta R.T.: -0.005 min
 Response: 35706854
 Conc: 50.24 ng/ml

Instrument :
 ECD_L
 ClientSampleId :



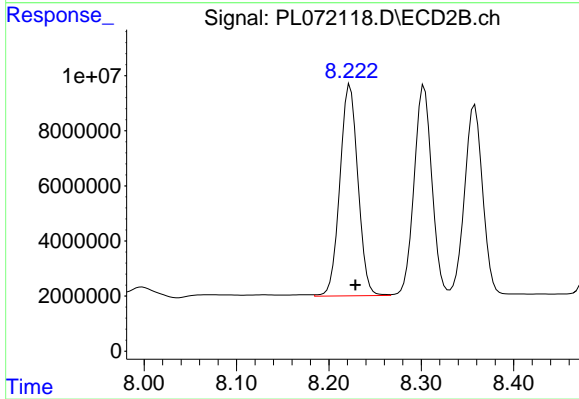
#9 Endosulfan I

R.T.: 8.358 min
 Delta R.T.: -0.006 min
 Response: 92860947
 Conc: 51.30 ng/ml



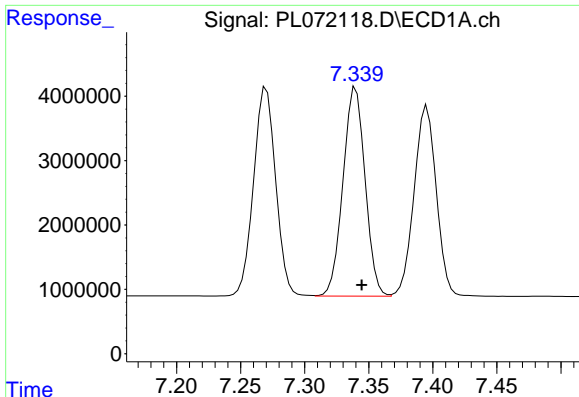
#10 gamma-Chlordane

R.T.: 7.270 min
 Delta R.T.: -0.005 min
 Response: 39005099
 Conc: 49.64 ng/ml



#10 gamma-Chlordane

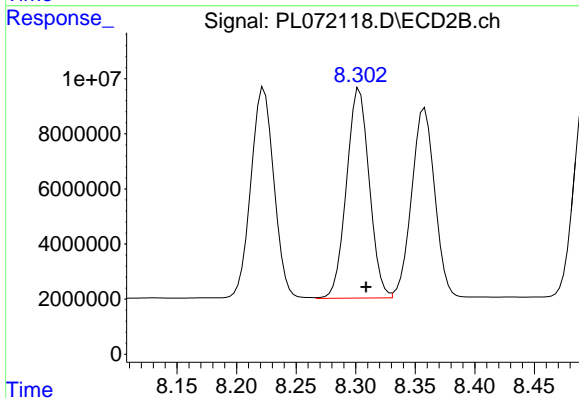
R.T.: 8.223 min
 Delta R.T.: -0.006 min
 Response: 104166162
 Conc: 51.55 ng/ml



#11 alpha-Chlordane

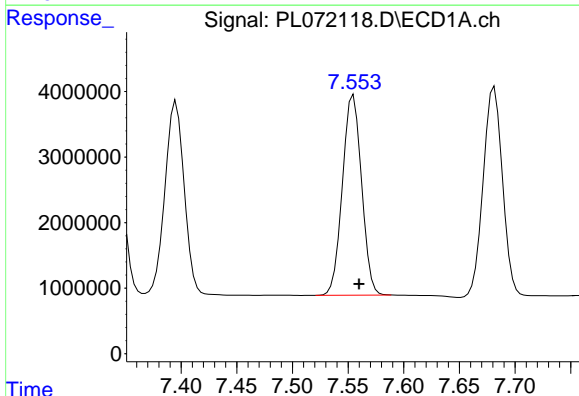
R.T.: 7.340 min
 Delta R.T.: -0.005 min
 Response: 38942809
 Conc: 49.64 ng/ml

Instrument :
 ECD_L
 ClientSampleId :



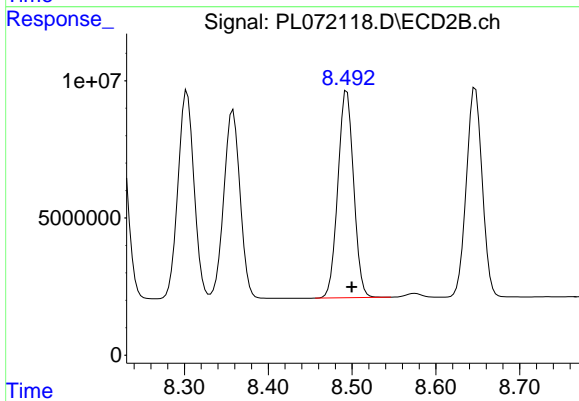
#11 alpha-Chlordane

R.T.: 8.303 min
 Delta R.T.: -0.006 min
 Response: 101297091
 Conc: 51.09 ng/ml



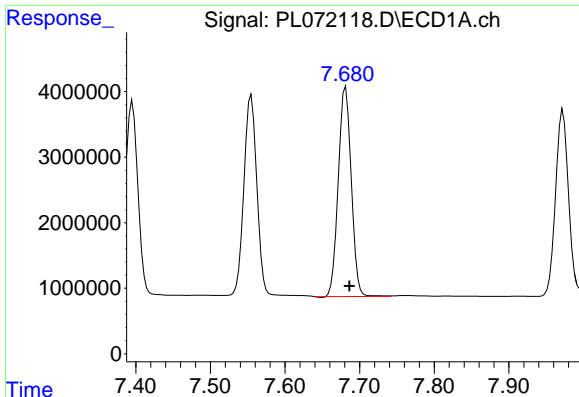
#12 4,4'-DDE

R.T.: 7.555 min
 Delta R.T.: -0.005 min
 Response: 36600884
 Conc: 50.69 ng/ml



#12 4,4'-DDE

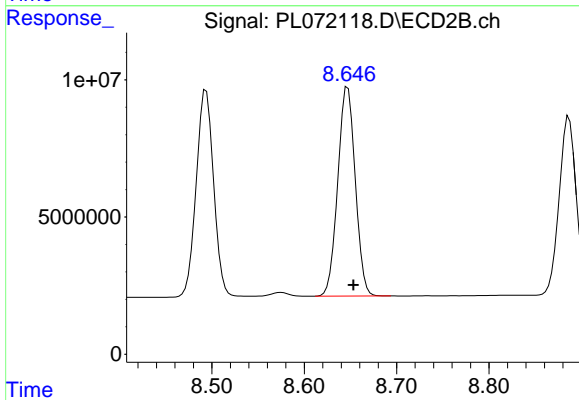
R.T.: 8.494 min
 Delta R.T.: -0.006 min
 Response: 98709331
 Conc: 52.19 ng/ml



#13 Dieldrin

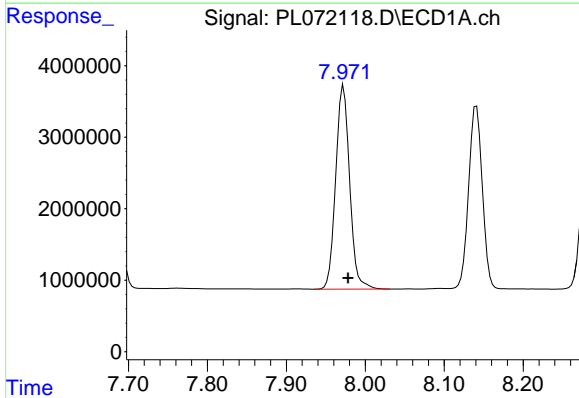
R.T.: 7.681 min
 Delta R.T.: -0.005 min
 Response: 38723533
 Conc: 51.11 ng/ml

Instrument :
 ECD_L
 ClientSampleId :



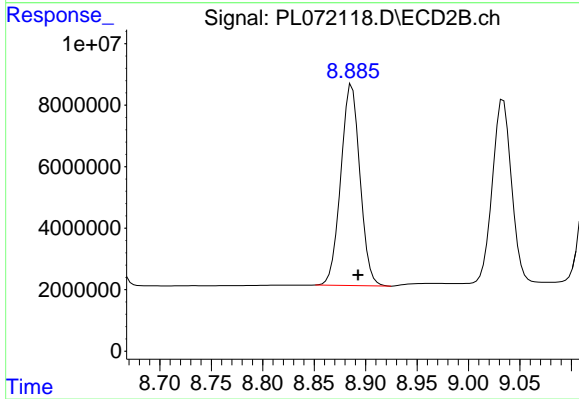
#13 Dieldrin

R.T.: 8.647 min
 Delta R.T.: -0.006 min
 Response: 100471299
 Conc: 51.14 ng/ml



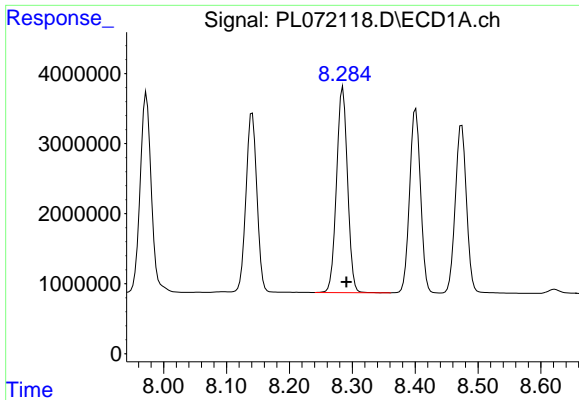
#14 Endrin

R.T.: 7.972 min
 Delta R.T.: -0.006 min
 Response: 35014195
 Conc: 49.97 ng/ml



#14 Endrin

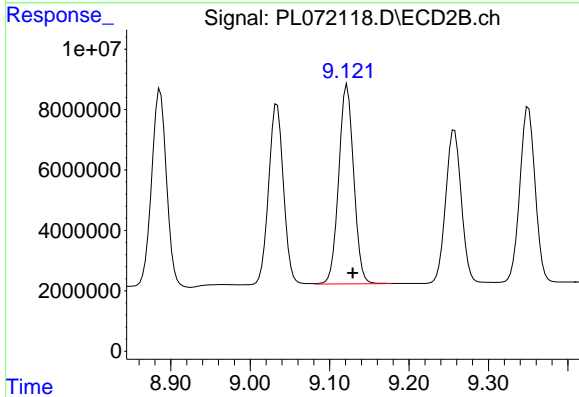
R.T.: 8.887 min
 Delta R.T.: -0.006 min
 Response: 84827168
 Conc: 51.16 ng/ml



#15 Endosulfan II

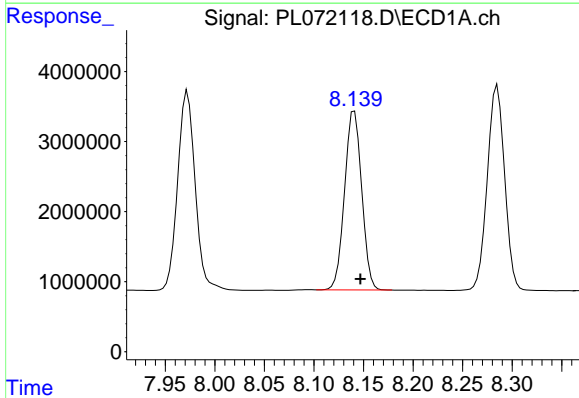
R.T.: 8.285 min
 Delta R.T.: -0.006 min
 Response: 35785680
 Conc: 48.13 ng/ml

Instrument :
 ECD_L
 ClientSampleId :



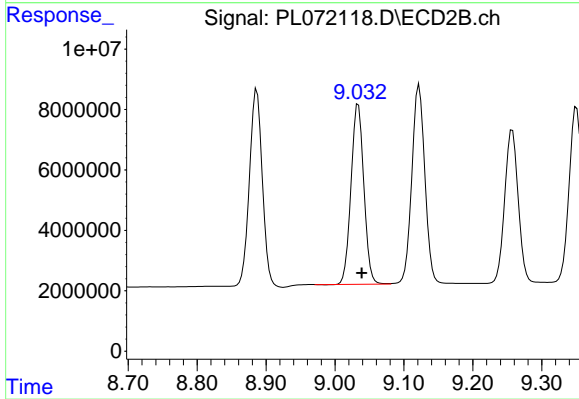
#15 Endosulfan II

R.T.: 9.122 min
 Delta R.T.: -0.007 min
 Response: 86734561
 Conc: 50.58 ng/ml



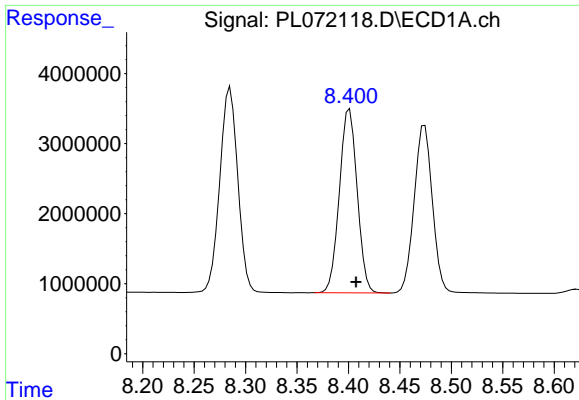
#16 4,4'-DDD

R.T.: 8.141 min
 Delta R.T.: -0.006 min
 Response: 30749241
 Conc: 52.45 ng/ml



#16 4,4'-DDD

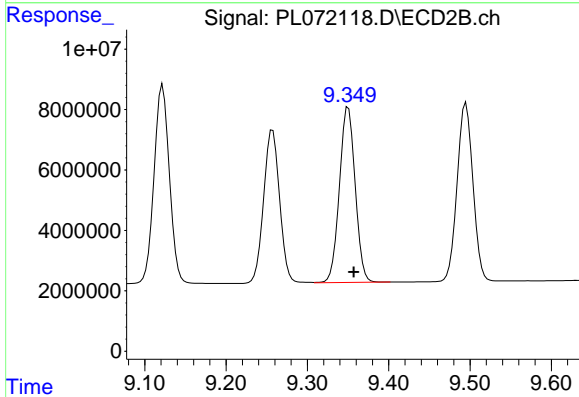
R.T.: 9.034 min
 Delta R.T.: -0.005 min
 Response: 77198553
 Conc: 53.99 ng/ml



#17 4,4'-DDT

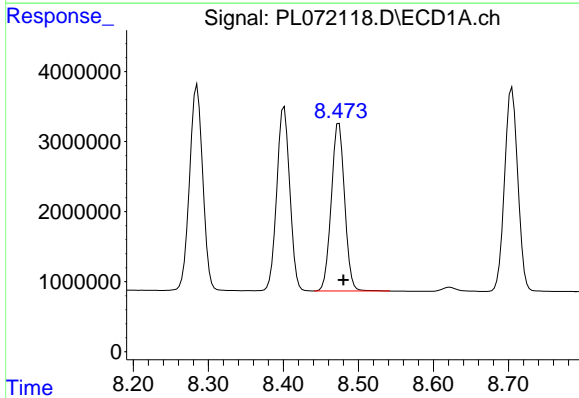
R.T.: 8.401 min
 Delta R.T.: -0.006 min
 Response: 31576940
 Conc: 47.55 ng/ml

Instrument :
 ECD_L
 ClientSampleId :



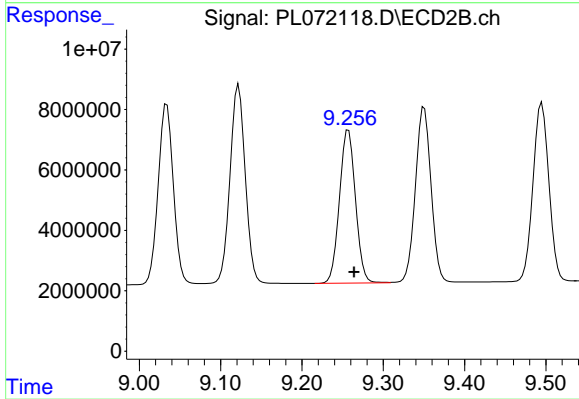
#17 4,4'-DDT

R.T.: 9.350 min
 Delta R.T.: -0.007 min
 Response: 77997033
 Conc: 49.35 ng/ml



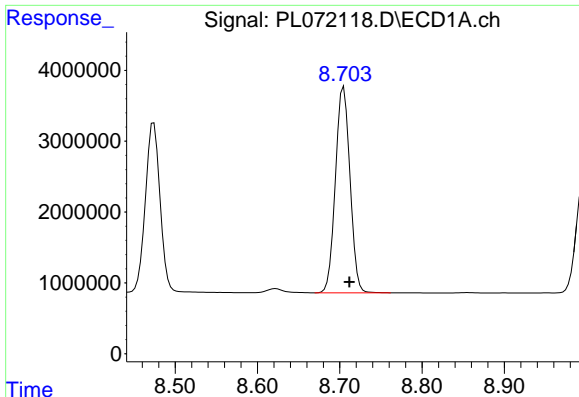
#18 Endrin aldehyde

R.T.: 8.474 min
 Delta R.T.: -0.006 min
 Response: 29555305
 Conc: 51.87 ng/ml



#18 Endrin aldehyde

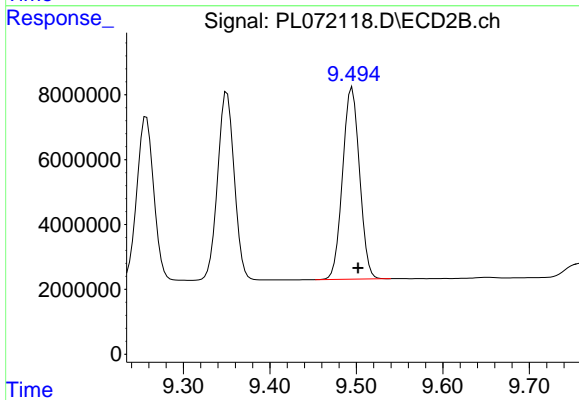
R.T.: 9.257 min
 Delta R.T.: -0.007 min
 Response: 69184878
 Conc: 55.73 ng/ml



#19 Endosulfan Sulfate

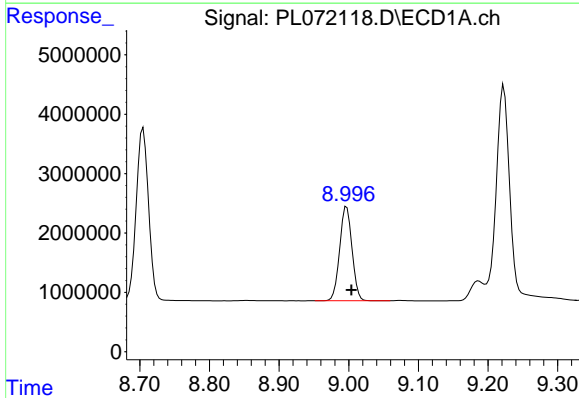
R.T.: 8.705 min
 Delta R.T.: -0.007 min
 Response: 35749298
 Conc: 48.76 ng/ml

Instrument :
 ECD_L
 ClientSampleId :



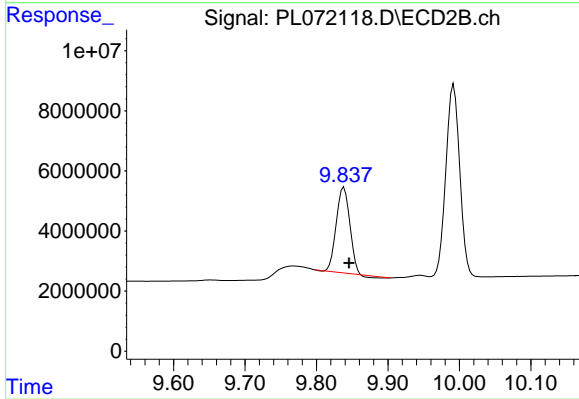
#19 Endosulfan Sulfate

R.T.: 9.495 min
 Delta R.T.: -0.007 min
 Response: 80153757
 Conc: 51.34 ng/ml



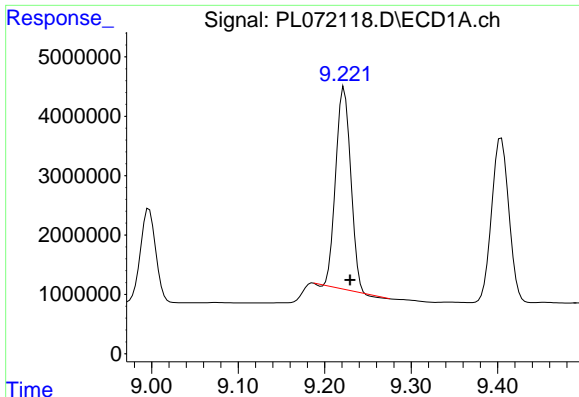
#20 Methoxychlor

R.T.: 8.997 min
 Delta R.T.: -0.007 min
 Response: 19540024
 Conc: 46.31 ng/ml



#20 Methoxychlor

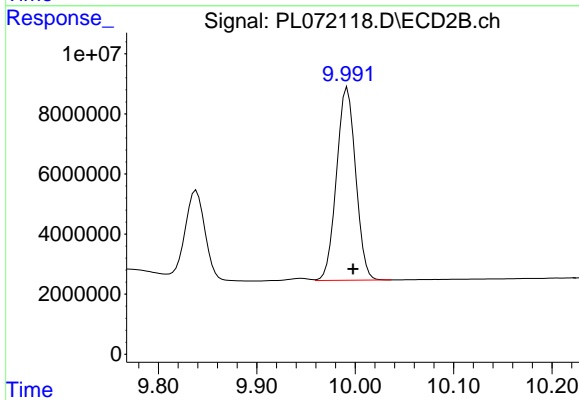
R.T.: 9.839 min
 Delta R.T.: -0.007 min
 Response: 36962503
 Conc: 44.62 ng/ml



#21 Endrin ketone

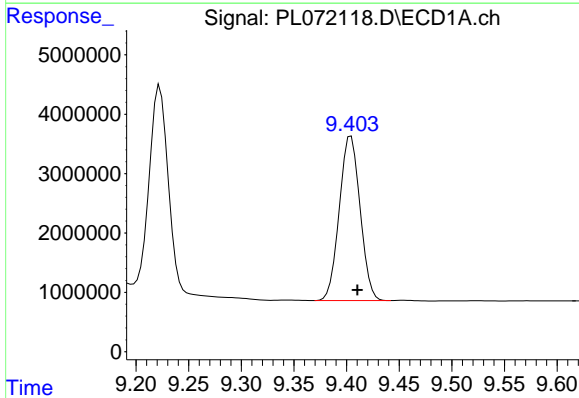
R.T.: 9.223 min
 Delta R.T.: -0.007 min
 Response: 40300590
 Conc: 48.40 ng/ml

Instrument :
 ECD_L
 ClientSampleId :



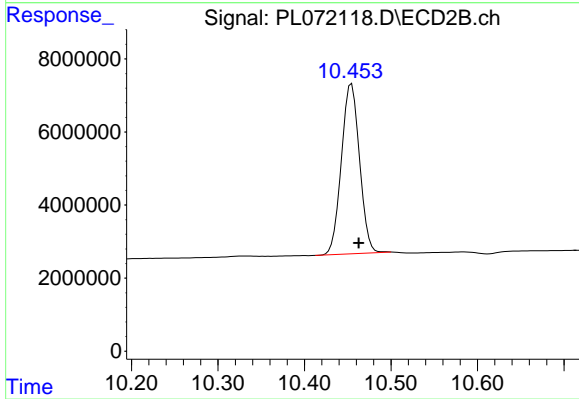
#21 Endrin ketone

R.T.: 9.992 min
 Delta R.T.: -0.006 min
 Response: 86696781
 Conc: 52.38 ng/ml



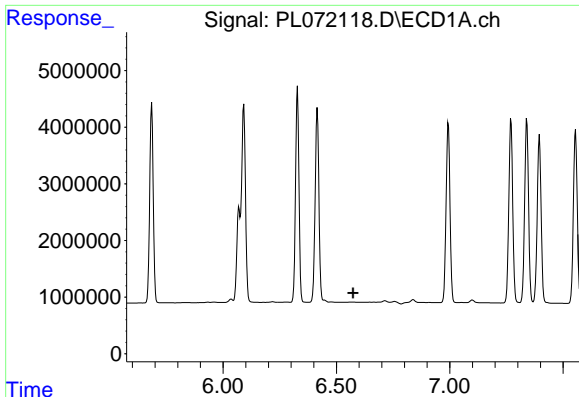
#22 Mirex

R.T.: 9.404 min
 Delta R.T.: -0.006 min
 Response: 38228141
 Conc: 51.77 ng/ml



#22 Mirex

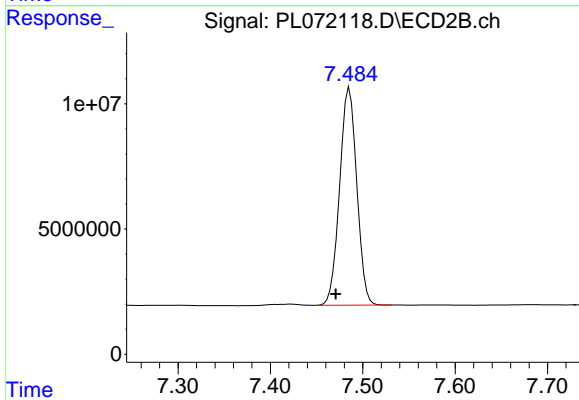
R.T.: 10.454 min
 Delta R.T.: -0.008 min
 Response: 67545970
 Conc: 54.13 ng/ml



#24 Chlordane-2

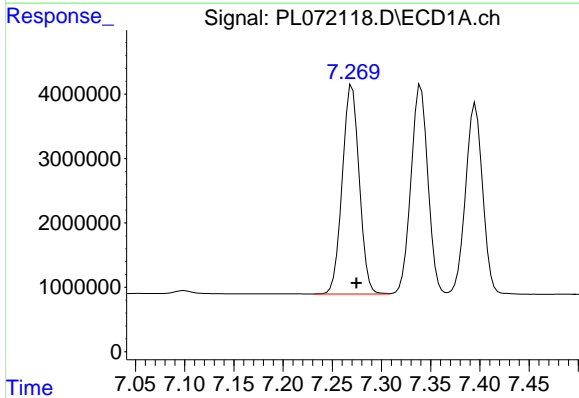
R.T.: 0.000 min
 Exp R.T.: 6.574 min
 Response: 0
 Conc: N.D.

Instrument :
 ECD_L
 ClientSampleId :



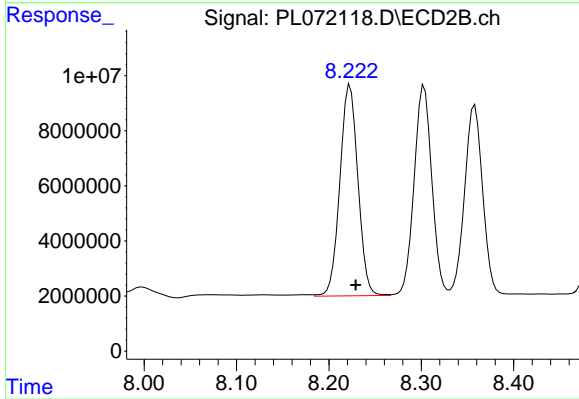
#24 Chlordane-2

R.T.: 7.486 min
 Delta R.T.: 0.015 min
 Response: 112143076
 Conc: 1604.47 ng/ml



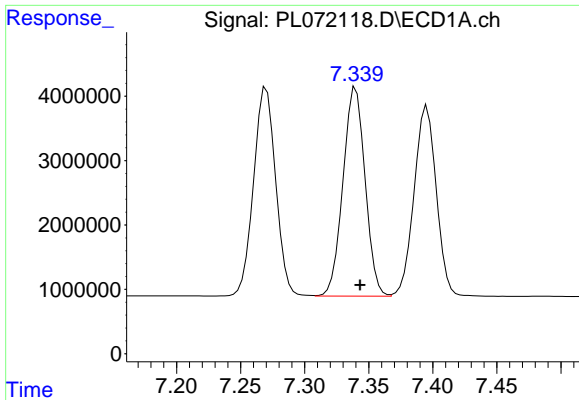
#25 Chlordane-3

R.T.: 7.270 min
 Delta R.T.: -0.004 min
 Response: 39005099
 Conc: 509.81 ng/ml



#25 Chlordane-3

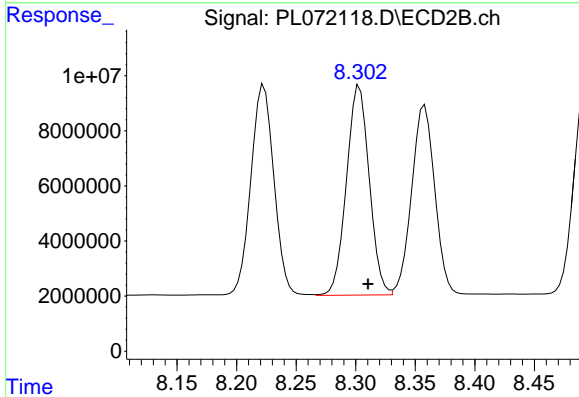
R.T.: 8.223 min
 Delta R.T.: -0.006 min
 Response: 104166162
 Conc: 374.92 ng/ml



#26 Chlordane-4

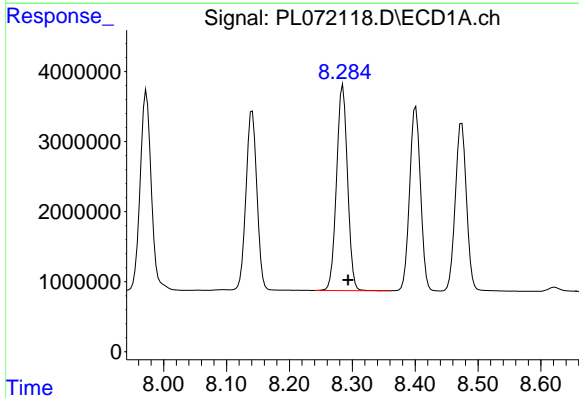
R.T.: 7.340 min
 Delta R.T.: -0.003 min
 Response: 38942809
 Conc: 472.01 ng/ml

Instrument :
 ECD_L
 ClientSampleId :



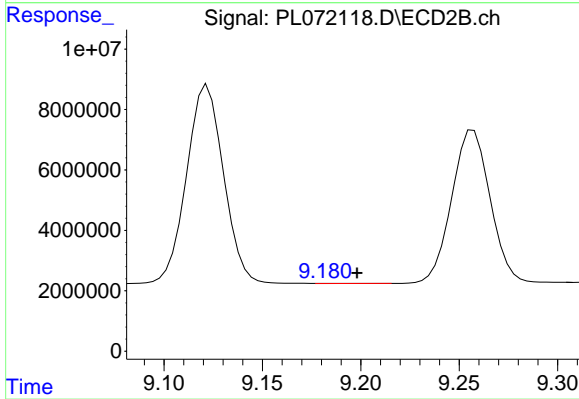
#26 Chlordane-4

R.T.: 8.303 min
 Delta R.T.: -0.007 min
 Response: 101297091
 Conc: 305.05 ng/ml



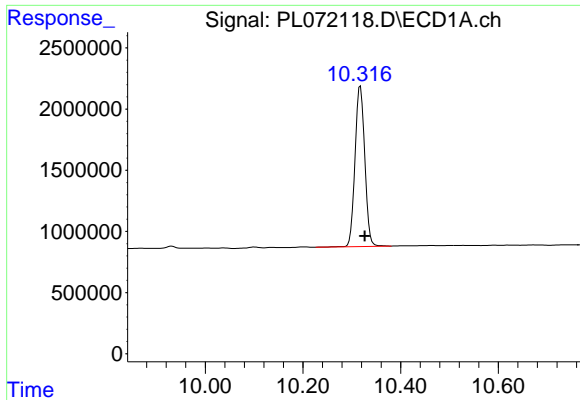
#27 Chlordane-5

R.T.: 8.285 min
 Delta R.T.: -0.008 min
 Response: 35785680
 Conc: 1227.91 ng/ml



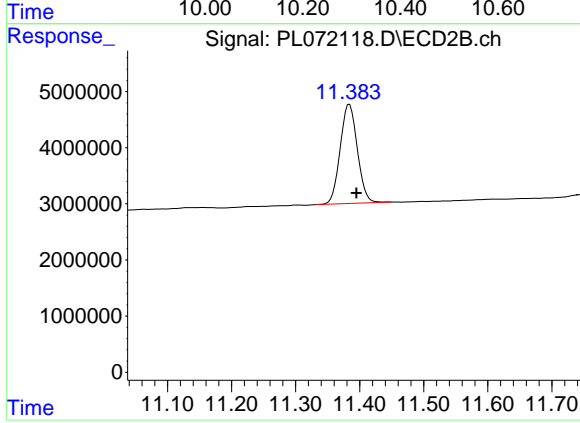
#27 Chlordane-5

R.T.: 9.182 min
 Delta R.T.: -0.016 min
 Response: 139048
 Conc: 2.28 ng/ml



#28 Decachlorobiphenyl
R.T.: 10.318 min
Delta R.T.: -0.009 min
Response: 18237672
Conc: 20.53 ng/ml

Instrument :
ECD_L
ClientSampleId :



#28 Decachlorobiphenyl
R.T.: 11.384 min
Delta R.T.: -0.011 min
Response: 32885535
Conc: 20.38 ng/ml