

Data Path : Z:\pestpcbsrv\HPCHEM1\ECD_L\Data\PL012022\
 Data File : PL072114.D
 Signal(s) : Signal #1: ECD1A.ch Signal #2: ECD2B.ch
 Acq On : 20 Jan 2022 11:18
 Operator : AR\AJ
 Sample : SOIL IDOC 02
 Misc : FOR HAROON MUGHAL
 ALS Vial : 6 Sample Multiplier: 1

Instrument :

ECD_L

ClientSampleId :

SOIL IDOC 02

Manual Integrations

APPROVED

Reviewed By :Abdul Mirza 01/21/2022
 Supervised By :Ankita Jodhani 01/21/2022

Integration File signal 1: autoint1.e
 Integration File signal 2: autoint2.e
 Quant Time: Jan 21 04:19:11 2022
 Quant Method : Z:\pestpcbsrv\HPCHEM1\ECD_L\methods\PL011722.M
 Quant Title : GC Extractables
 QLast Update : Tue Jan 18 10:53:59 2022
 Response via : Initial Calibration
 Integrator: ChemStation

Volume Inj. : 1 µl
 Signal #1 Phase : ZB-MR2 Signal #2 Phase: ZB-MR1
 Signal #1 Info : 30M x 0.32mm x0.2 Signal #2 Info : 30M x 0.32mm x0.5µm

Compound	RT#1	RT#2	Resp#1	Resp#2	ng/ml	ng/ml

System Monitoring Compounds						
1) SA Tetrachlo...	4.557	5.492	10676090	31162783	19.230	19.188
28) SA Decachlor...	10.319	11.384	17978839	32451625	20.237	20.113
Target Compounds						
2) A alpha-BHC	5.264	6.074	38711810	122.4E6	50.066	50.727
3) MA gamma-BHC...	5.686	6.470	37931941	115.0E6	50.306	51.107
4) MA Heptachlor	6.093	7.116	42144523	117.4E6	48.852	50.623
5) MB Aldrin	6.416	7.486	39654528	114.4E6	50.219	51.748
6) B beta-BHC	6.072	6.729	16236769	49472834	49.119	49.967
7) B delta-BHC	6.330	6.995	39677426	119.2E6	50.089	48.449
8) B Heptachlo...	6.995	7.952	37940921	104.2E6	49.841	52.051m
9) A Endosulfan I	7.397	8.359	35560274	93670524	50.035	51.750
10) B gamma-Chl...	7.272	8.223	38737561	105.5E6	49.302	52.225
11) B alpha-Chl...	7.341	8.304	38799488	102.5E6	49.458	51.699
12) B 4,4'-DDE	7.556	8.494	36494976	99255958	50.548	52.482
13) MA Dieldrin	7.683	8.648	38528157	101.2E6	50.854	51.489
14) MA Endrin	7.974	8.886	34691372	84483003	49.512	50.954
15) B Endosulfa...	8.286	9.122	35590825	86750746	47.868	50.586
16) A 4,4'-DDD	8.142	9.034	30594413	77719356	52.189	54.357
17) MA 4,4'-DDT	8.402	9.351	31377618	77874209	47.250	49.271
18) B Endrin al...	8.476	9.258	29464517	69134697	51.715	55.692
19) B Endosulfa...	8.706	9.495	35553043	79439429	48.491	50.885
20) A Methoxychlor	8.998	9.837	19322174	44010903	45.798	53.131m
21) B Endrin ke...	9.223	9.992	45139077	86002617	54.208m	51.965
22) Mirex	9.405	10.454	38011408	66395072	51.472	53.211

(f)=RT Delta > 1/2 Window (#)=Amounts differ by > 25% (m)=manual int.

Data Path : Z:\pestpcbsrv\HPCHEM1\ECD_L\Data\PL012022\
 Data File : PL072114.D
 Signal(s) : Signal #1: ECD1A.ch Signal #2: ECD2B.ch
 Acq On : 20 Jan 2022 11:18
 Operator : AR\AJ
 Sample : SOIL IDOC 02
 Misc : FOR HAROON MUGHAL
 ALS Vial : 6 Sample Multiplier: 1

Instrument :

ECD_L

ClientSampleId :

SOIL IDOC 02

Manual Integrations

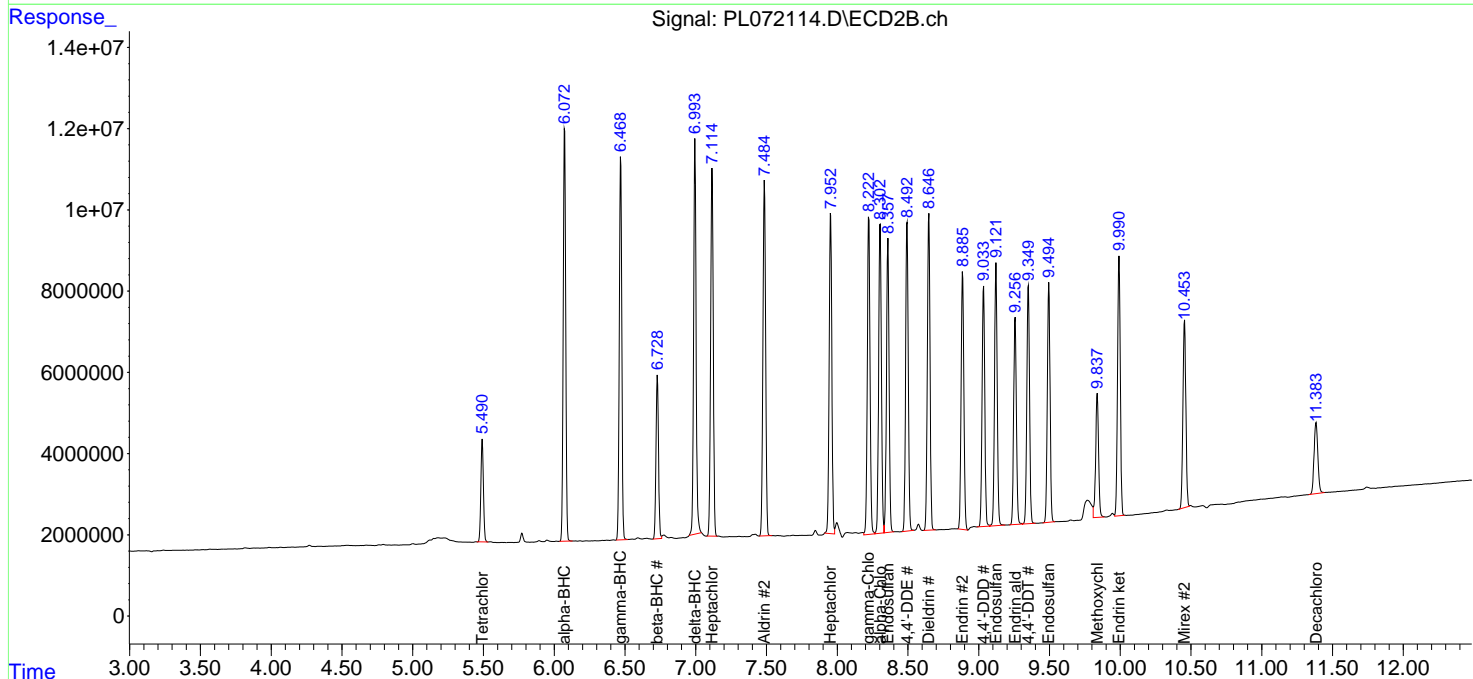
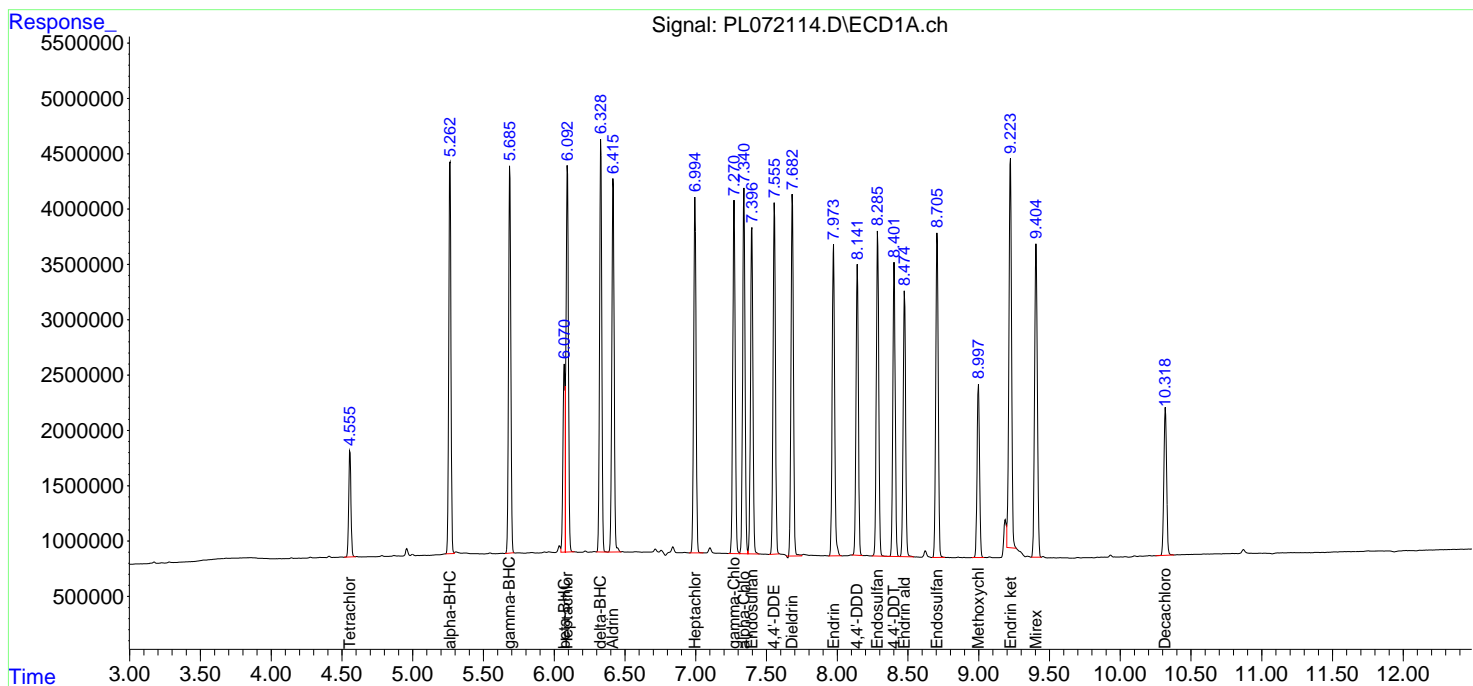
APPROVED

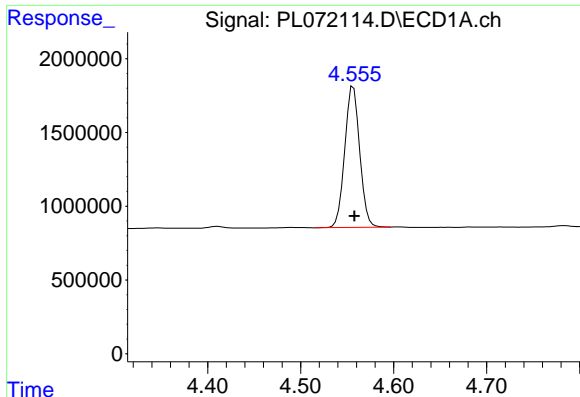
Reviewed By :Abdul Mirza 01/21/2022

Supervised By :Ankita Jodhani 01/21/2022

Integration File signal 1: autoint1.e
 Integration File signal 2: autoint2.e
 Quant Time: Jan 21 04:19:11 2022
 Quant Method : Z:\pestpcbsrv\HPCHEM1\ECD_L\methods\PL011722.M
 Quant Title : GC Extractables
 QLast Update : Tue Jan 18 10:53:59 2022
 Response via : Initial Calibration
 Integrator: ChemStation

Volume Inj. : 1 µl
 Signal #1 Phase : ZB-MR2 Signal #2 Phase: ZB-MR1
 Signal #1 Info : 30M x 0.32mm x0.2 Signal #2 Info : 30M x 0.32mm x0.5µm





#1 Tetrachloro-m-xylene

R.T.: 4.557 min
 Delta R.T.: -0.001 min
 Response: 10676090
 Conc: 19.23 ng/ml

Instrument :

ECD_L

ClientSampleId :

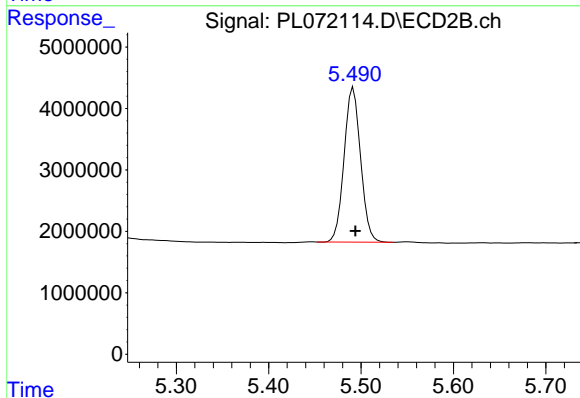
SOIL IDOC 02

Manual Integrations

APPROVED

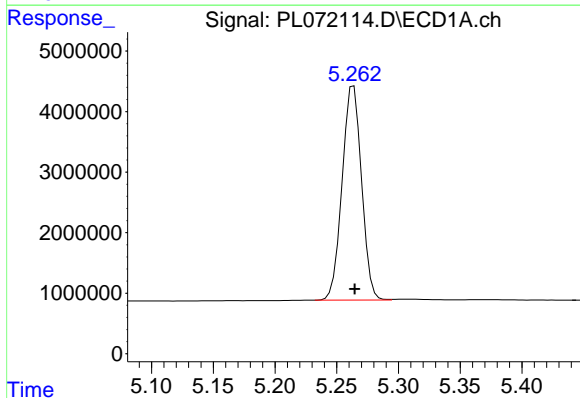
Reviewed By :Abdul Mirza 01/21/2022

Supervised By :Ankita Jodhani 01/21/2022



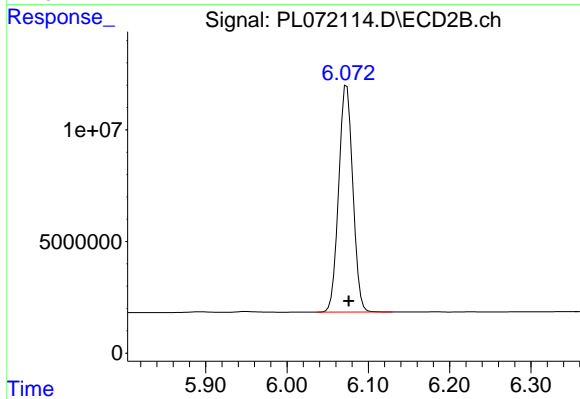
#1 Tetrachloro-m-xylene

R.T.: 5.492 min
 Delta R.T.: -0.002 min
 Response: 31162783
 Conc: 19.19 ng/ml



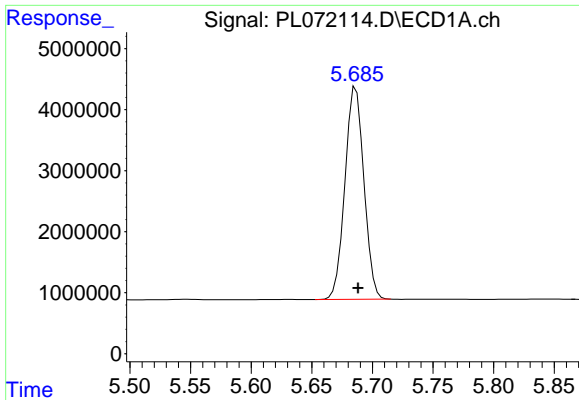
#2 alpha-BHC

R.T.: 5.264 min
 Delta R.T.: 0.000 min
 Response: 38711810
 Conc: 50.07 ng/ml



#2 alpha-BHC

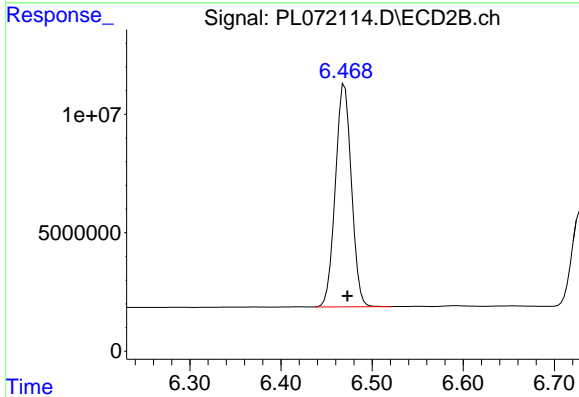
R.T.: 6.074 min
 Delta R.T.: -0.002 min
 Response: 122397440
 Conc: 50.73 ng/ml



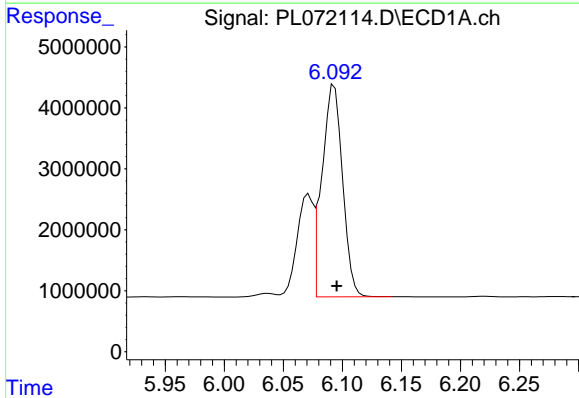
#3 gamma-BHC (Lindane)
 R.T.: 5.686 min
 Delta R.T.: -0.002 min
 Response: 37931941
 Conc: 50.31 ng/ml

Instrument : ECD_L
 ClientSampleId : SOIL IDOC 02

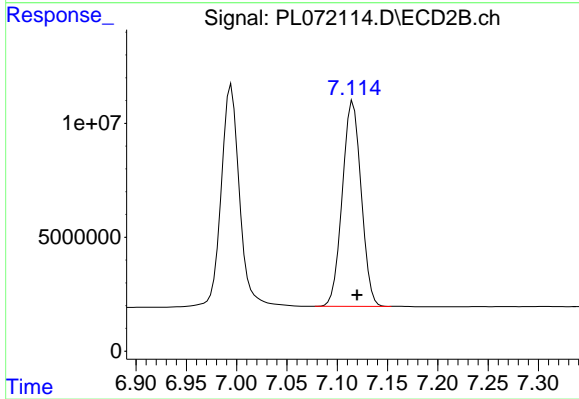
Manual Integrations
APPROVED
 Reviewed By :Abdul Mirza 01/21/2022
 Supervised By :Ankita Jodhani 01/21/2022



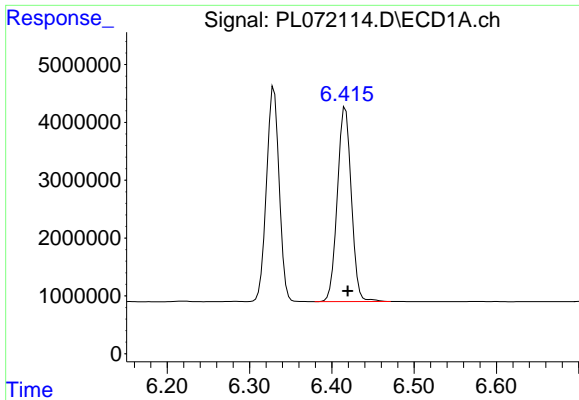
#3 gamma-BHC (Lindane)
 R.T.: 6.470 min
 Delta R.T.: -0.003 min
 Response: 115007050
 Conc: 51.11 ng/ml



#4 Heptachlor
 R.T.: 6.093 min
 Delta R.T.: -0.002 min
 Response: 42144523
 Conc: 48.85 ng/ml



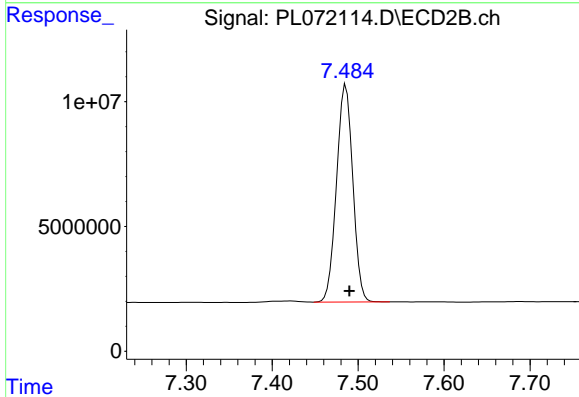
#4 Heptachlor
 R.T.: 7.116 min
 Delta R.T.: -0.004 min
 Response: 117368620
 Conc: 50.62 ng/ml



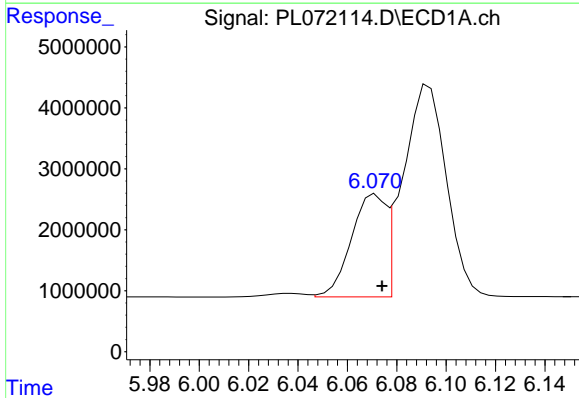
#5 Aldrin
 R.T.: 6.416 min
 Delta R.T.: -0.003 min
 Response: 39654528
 Conc: 50.22 ng/ml

Instrument :
 ECD_L
 ClientSampleId :
 SOIL IDOC 02

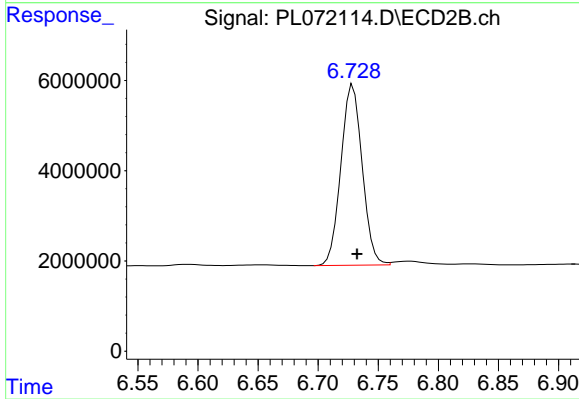
Manual Integrations
APPROVED
 Reviewed By :Abdul Mirza 01/21/2022
 Supervised By :Ankita Jodhani 01/21/2022



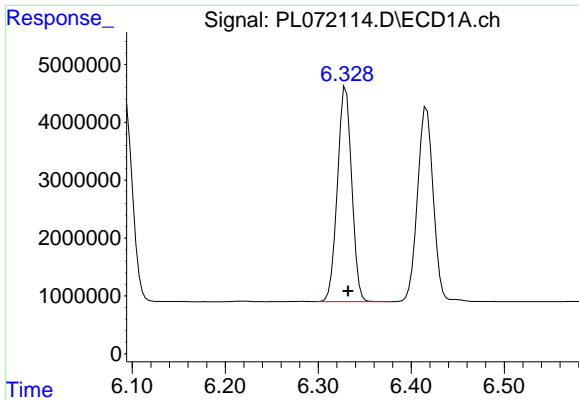
#5 Aldrin
 R.T.: 7.486 min
 Delta R.T.: -0.004 min
 Response: 114426457
 Conc: 51.75 ng/ml



#6 beta-BHC
 R.T.: 6.072 min
 Delta R.T.: -0.003 min
 Response: 16236769
 Conc: 49.12 ng/ml



#6 beta-BHC
 R.T.: 6.729 min
 Delta R.T.: -0.003 min
 Response: 49472834
 Conc: 49.97 ng/ml

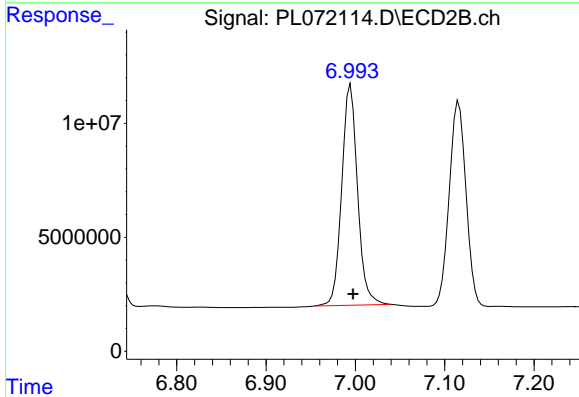


#7 delta-BHC
 R.T.: 6.330 min
 Delta R.T.: -0.002 min
 Response: 39677426
 Conc: 50.09 ng/ml

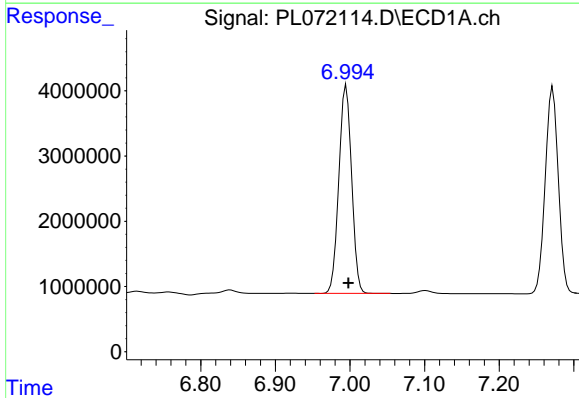
Instrument :
 ECD_L
 ClientSampleId :
 SOIL IDOC 02

Manual Integrations
 APPROVED

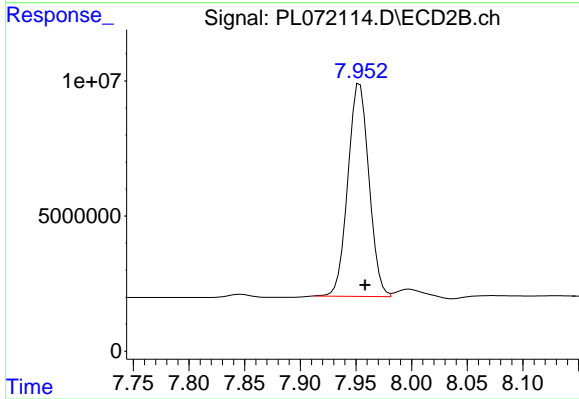
Reviewed By :Abdul Mirza 01/21/2022
 Supervised By :Ankita Jodhani 01/21/2022



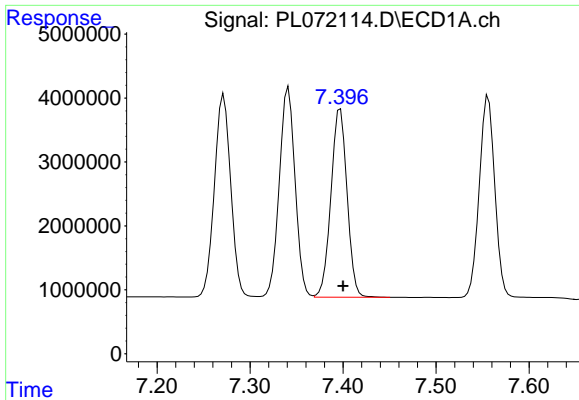
#7 delta-BHC
 R.T.: 6.995 min
 Delta R.T.: -0.003 min
 Response: 119199699
 Conc: 48.45 ng/ml



#8 Heptachlor epoxide
 R.T.: 6.995 min
 Delta R.T.: -0.003 min
 Response: 37940921
 Conc: 49.84 ng/ml



#8 Heptachlor epoxide
 R.T.: 7.952 min
 Delta R.T.: -0.006 min
 Response: 104222081
 Conc: 52.05 ng/ml m



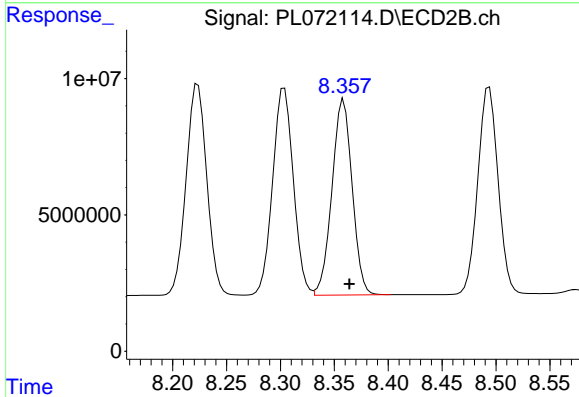
#9 Endosulfan I

R.T.: 7.397 min
 Delta R.T.: -0.003 min
 Response: 35560274
 Conc: 50.03 ng/ml

Instrument :
 ECD_L
 ClientSampleId :
 SOIL IDOC 02

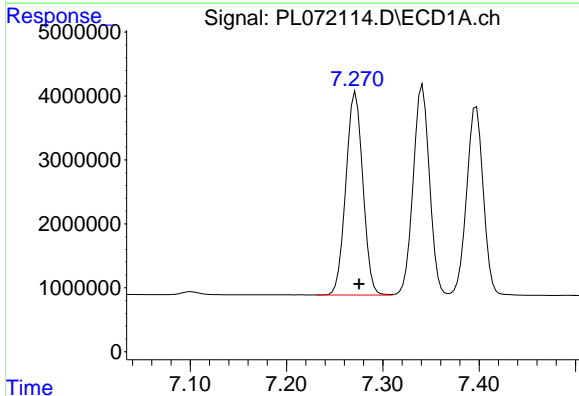
Manual Integrations
 APPROVED

Reviewed By :Abdul Mirza 01/21/2022
 Supervised By :Ankita Jodhani 01/21/2022



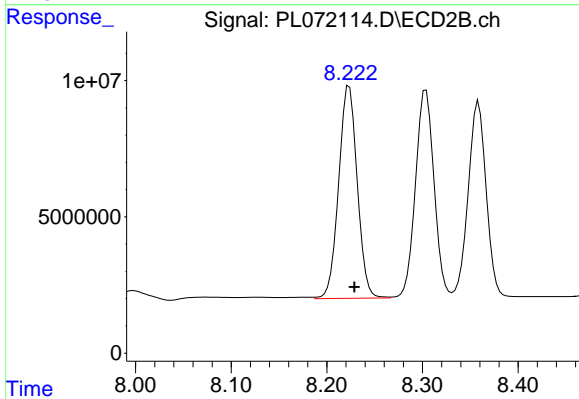
#9 Endosulfan I

R.T.: 8.359 min
 Delta R.T.: -0.006 min
 Response: 93670524
 Conc: 51.75 ng/ml



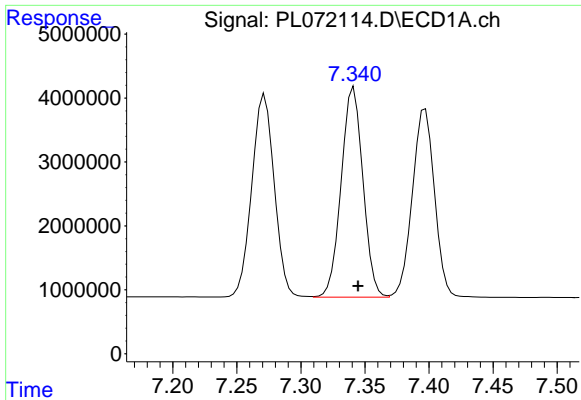
#10 gamma-Chlordane

R.T.: 7.272 min
 Delta R.T.: -0.004 min
 Response: 38737561
 Conc: 49.30 ng/ml



#10 gamma-Chlordane

R.T.: 8.223 min
 Delta R.T.: -0.005 min
 Response: 105537486
 Conc: 52.23 ng/ml

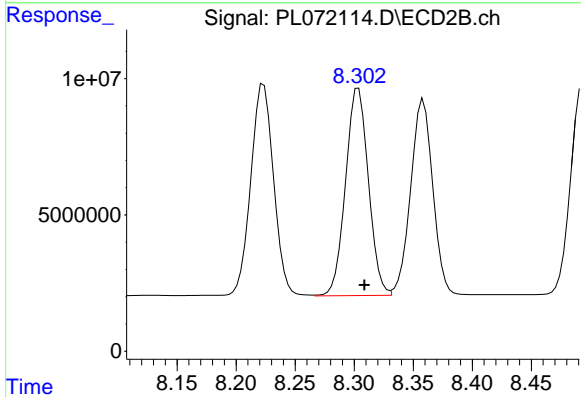


#11 alpha-Chlordane
 R.T.: 7.341 min
 Delta R.T.: -0.003 min
 Response: 38799488
 Conc: 49.46 ng/ml

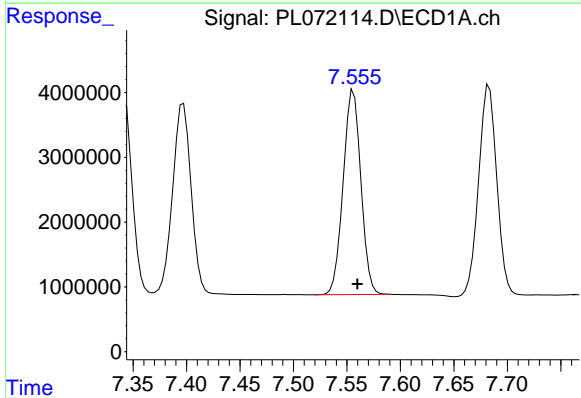
Instrument :
 ECD_L
 Client Sample Id :
 SOIL IDOC 02

Manual Integrations
 APPROVED

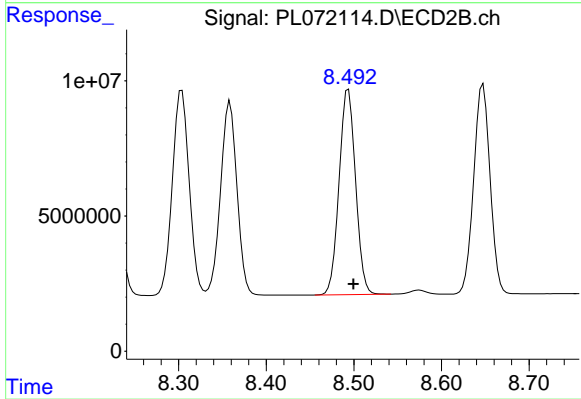
Reviewed By :Abdul Mirza 01/21/2022
 Supervised By :Ankita Jodhani 01/21/2022



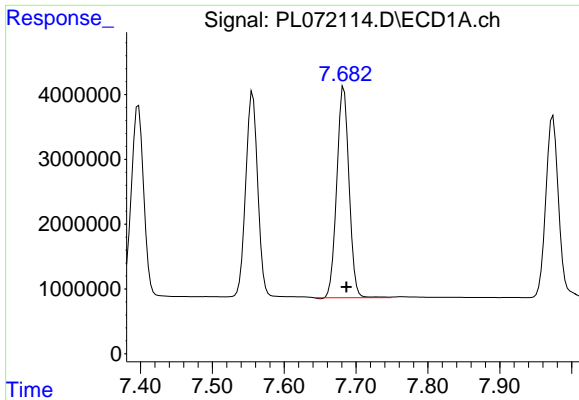
#11 alpha-Chlordane
 R.T.: 8.304 min
 Delta R.T.: -0.005 min
 Response: 102508395
 Conc: 51.70 ng/ml



#12 4,4'-DDE
 R.T.: 7.556 min
 Delta R.T.: -0.003 min
 Response: 36494976
 Conc: 50.55 ng/ml



#12 4,4'-DDE
 R.T.: 8.494 min
 Delta R.T.: -0.006 min
 Response: 99255958
 Conc: 52.48 ng/ml



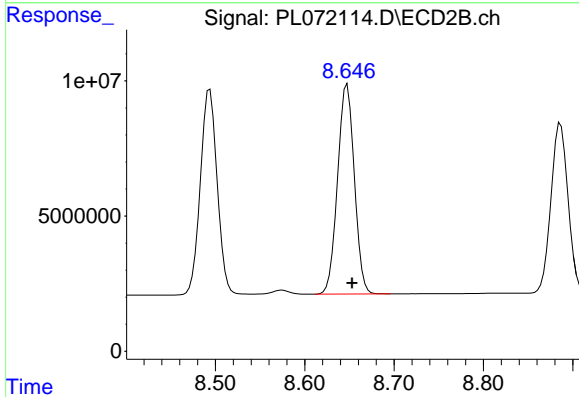
#13 Dieldrin

R.T.: 7.683 min
 Delta R.T.: -0.003 min
 Response: 38528157
 Conc: 50.85 ng/ml

Instrument :
 ECD_L
 ClientSampleId :
 SOIL IDOC 02

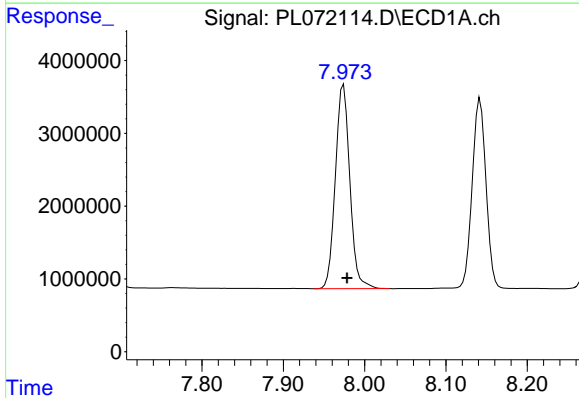
Manual Integrations
 APPROVED

Reviewed By :Abdul Mirza 01/21/2022
 Supervised By :Ankita Jodhani 01/21/2022



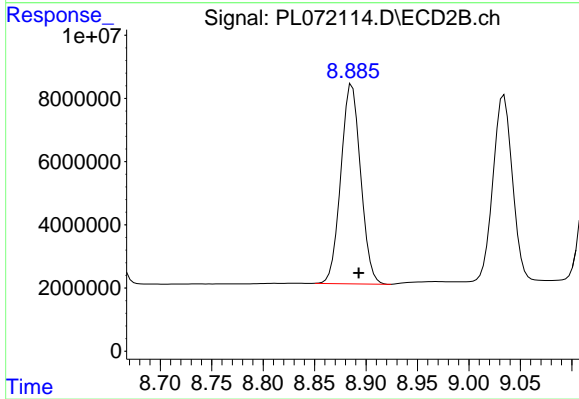
#13 Dieldrin

R.T.: 8.648 min
 Delta R.T.: -0.006 min
 Response: 101155651
 Conc: 51.49 ng/ml



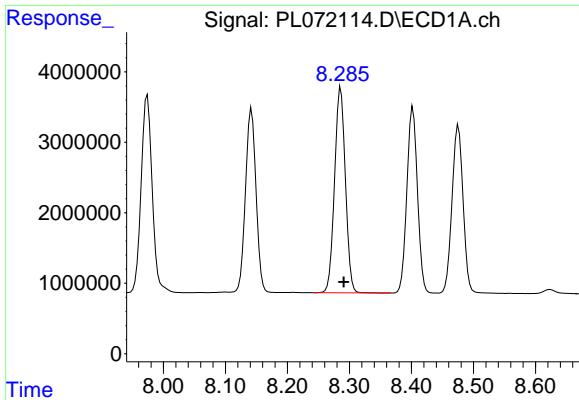
#14 Endrin

R.T.: 7.974 min
 Delta R.T.: -0.004 min
 Response: 34691372
 Conc: 49.51 ng/ml



#14 Endrin

R.T.: 8.886 min
 Delta R.T.: -0.006 min
 Response: 84483003
 Conc: 50.95 ng/ml



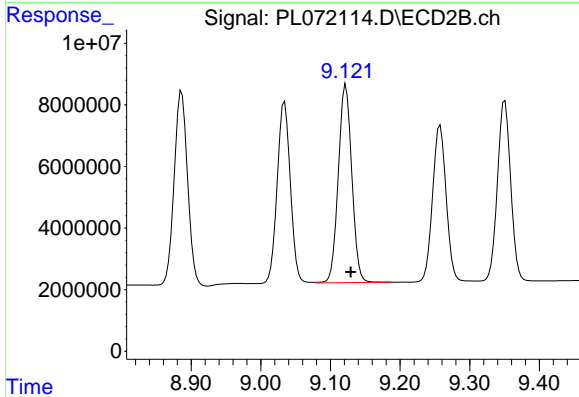
#15 Endosulfan II

R.T.: 8.286 min
 Delta R.T.: -0.005 min
 Response: 35590825
 Conc: 47.87 ng/ml

Instrument :
 ECD_L
 ClientSampleId :
 SOIL IDOC 02

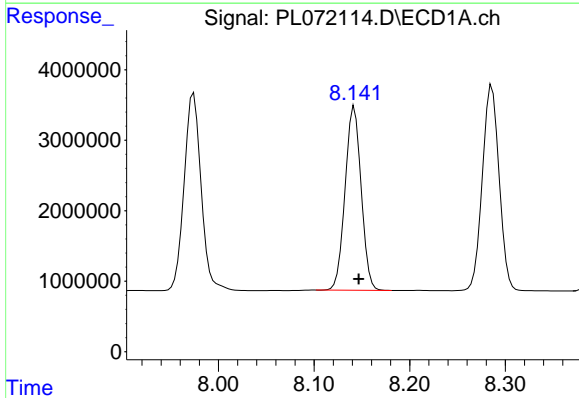
Manual Integrations
 APPROVED

Reviewed By :Abdul Mirza 01/21/2022
 Supervised By :Ankita Jodhani 01/21/2022



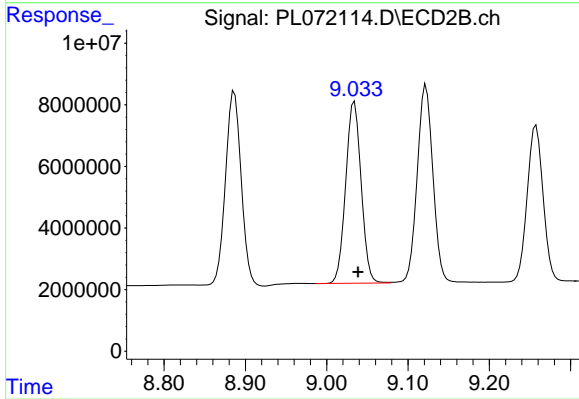
#15 Endosulfan II

R.T.: 9.122 min
 Delta R.T.: -0.007 min
 Response: 86750746
 Conc: 50.59 ng/ml



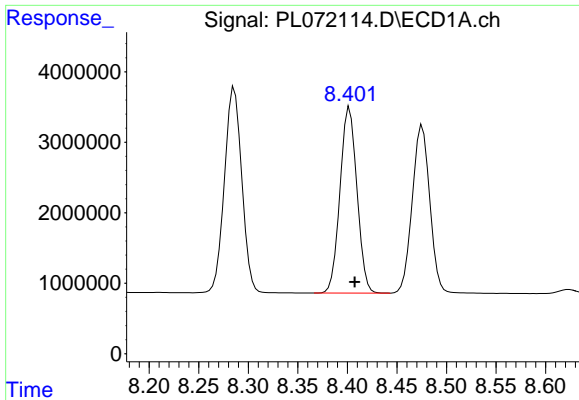
#16 4,4'-DDD

R.T.: 8.142 min
 Delta R.T.: -0.005 min
 Response: 30594413
 Conc: 52.19 ng/ml



#16 4,4'-DDD

R.T.: 9.034 min
 Delta R.T.: -0.005 min
 Response: 77719356
 Conc: 54.36 ng/ml



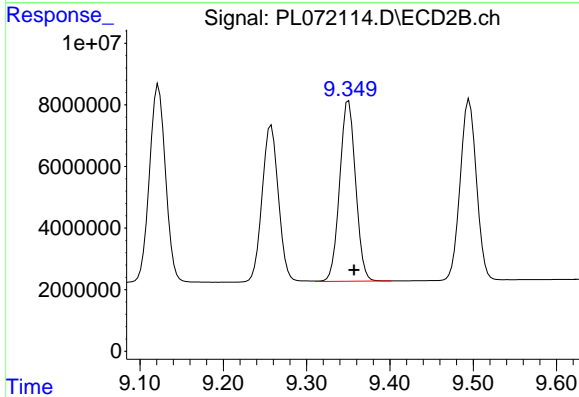
#17 4,4'-DDT

R.T.: 8.402 min
 Delta R.T.: -0.005 min
 Response: 31377618
 Conc: 47.25 ng/ml

Instrument :
 ECD_L
 ClientSampleId :
 SOIL IDOC 02

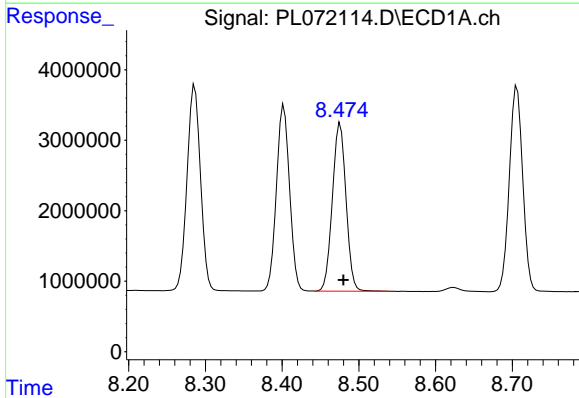
Manual Integrations
 APPROVED

Reviewed By :Abdul Mirza 01/21/2022
 Supervised By :Ankita Jodhani 01/21/2022



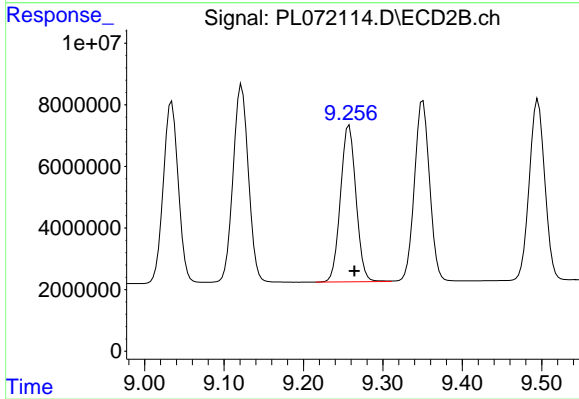
#17 4,4'-DDT

R.T.: 9.351 min
 Delta R.T.: -0.006 min
 Response: 77874209
 Conc: 49.27 ng/ml



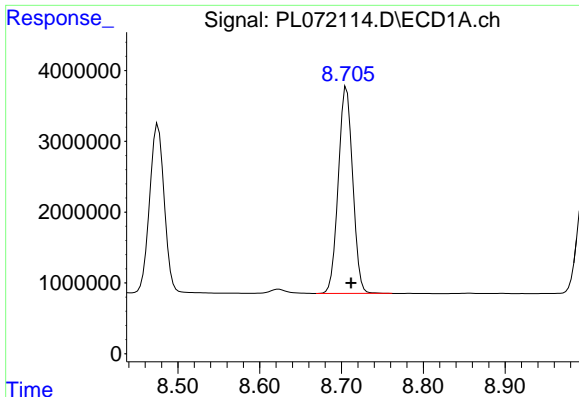
#18 Endrin aldehyde

R.T.: 8.476 min
 Delta R.T.: -0.004 min
 Response: 29464517
 Conc: 51.71 ng/ml



#18 Endrin aldehyde

R.T.: 9.258 min
 Delta R.T.: -0.007 min
 Response: 69134697
 Conc: 55.69 ng/ml



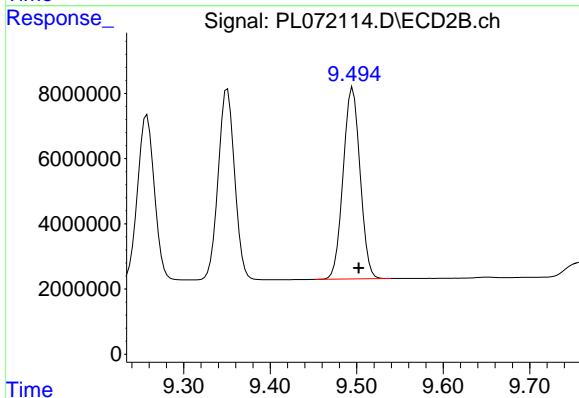
#19 Endosulfan Sulfate

R.T.: 8.706 min
 Delta R.T.: -0.006 min
 Response: 35553043
 Conc: 48.49 ng/ml

Instrument :
 ECD_L
 ClientSampleId :
 SOIL IDOC 02

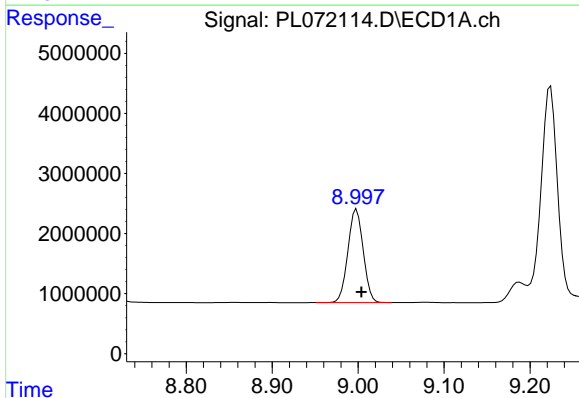
Manual Integrations
 APPROVED

Reviewed By :Abdul Mirza 01/21/2022
 Supervised By :Ankita Jodhani 01/21/2022



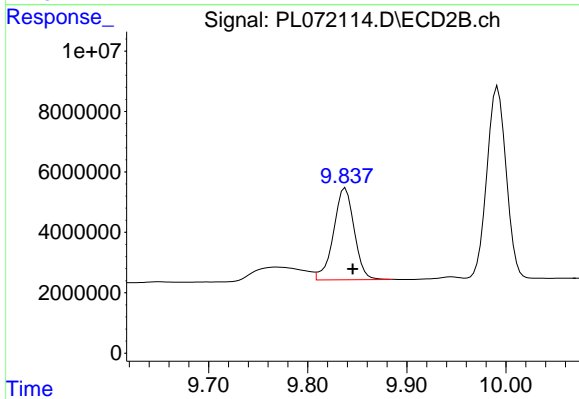
#19 Endosulfan Sulfate

R.T.: 9.495 min
 Delta R.T.: -0.007 min
 Response: 79439429
 Conc: 50.89 ng/ml



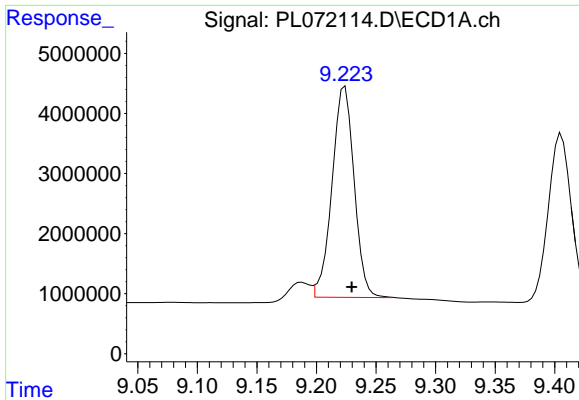
#20 Methoxychlor

R.T.: 8.998 min
 Delta R.T.: -0.006 min
 Response: 19322174
 Conc: 45.80 ng/ml



#20 Methoxychlor

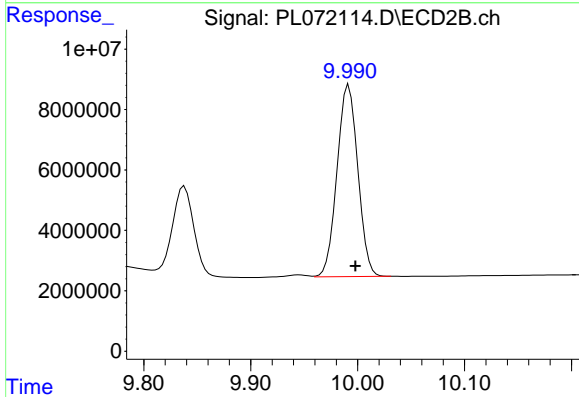
R.T.: 9.837 min
 Delta R.T.: -0.009 min
 Response: 44010903
 Conc: 53.13 ng/ml m



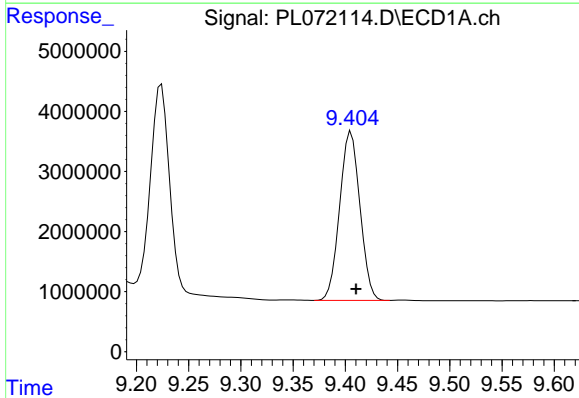
#21 Endrin ketone
 R.T.: 9.223 min
 Delta R.T.: -0.007 min
 Response: 45139077
 Conc: 54.21 ng/ml

Instrument :
 ECD_L
 ClientSampleId :
 SOIL IDOC 02

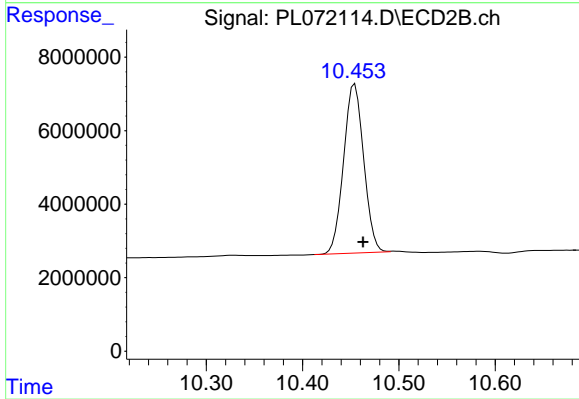
Manual Integrations
APPROVED
 Reviewed By :Abdul Mirza 01/21/2022
 Supervised By :Ankita Jodhani 01/21/2022



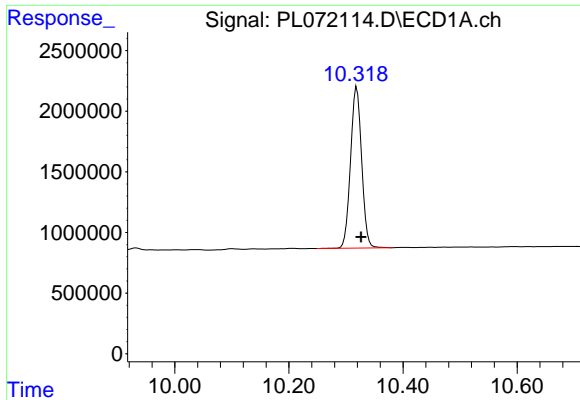
#21 Endrin ketone
 R.T.: 9.992 min
 Delta R.T.: -0.006 min
 Response: 86002617
 Conc: 51.97 ng/ml



#22 Mirex
 R.T.: 9.405 min
 Delta R.T.: -0.005 min
 Response: 38011408
 Conc: 51.47 ng/ml



#22 Mirex
 R.T.: 10.454 min
 Delta R.T.: -0.009 min
 Response: 66395072
 Conc: 53.21 ng/ml



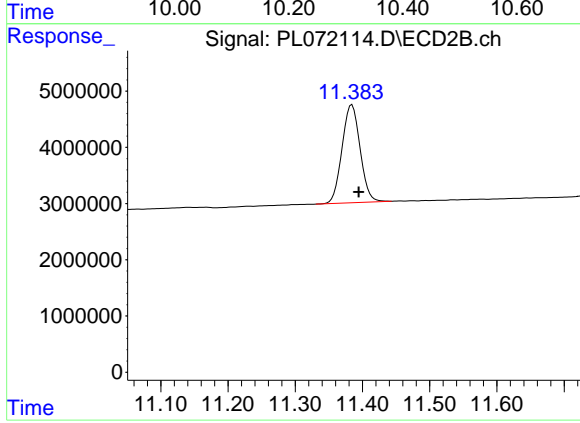
#28 Decachlorobiphenyl
 R.T.: 10.319 min
 Delta R.T.: -0.007 min
 Response: 17978839
 Conc: 20.24 ng/ml

Instrument :
 ECD_L

Client Sample Id :
 SOIL IDOC 02

Manual Integrations
 APPROVED

Reviewed By :Abdul Mirza 01/21/2022
 Supervised By :Ankita Jodhani 01/21/2022



#28 Decachlorobiphenyl
 R.T.: 11.384 min
 Delta R.T.: -0.010 min
 Response: 32451625
 Conc: 20.11 ng/ml