

Data Path : Z:\pestpcbsrv\HPCHEM1\ECD_L\Data\PL012023\
 Data File : PL080433.D
 Signal(s) : Signal #1: ECD1A.ch Signal #2: ECD2B.ch
 Acq On : 20 Jan 2023 21:37
 Operator : AR\AJ
 Sample : 01232-04
 Misc :
 ALS Vial : 33 Sample Multiplier: 1

Instrument :
 ECD_L
 ClientSampleId :
 B-P-18A

Integration File signal 1: autoint1.e
 Integration File signal 2: autoint2.e
 Quant Time: Jan 21 06:14:33 2023
 Quant Method : Z:\pestpcbsrv\HPCHEM1\ECD_L\methods\PL012023.M
 Quant Title : GC Extractables
 QLast Update : Fri Jan 20 17:01:11 2023
 Response via : Initial Calibration
 Integrator: ChemStation

Volume Inj. : 1 µl
 Signal #1 Phase : ZB-MR2 Signal #2 Phase: ZB-MR1
 Signal #1 Info : 30M x 0.32mm x0.2 Signal #2 Info : 30M x 0.32mm x0.5µm

Compound	RT#1	RT#2	Resp#1	Resp#2	ng/ml	ng/ml

System Monitoring Compounds						
1) SA Tetrachlo...	3.351	2.689	47582577	44936522	22.185	20.459
28) SA Decachlor...	8.789	7.838	34062850	45209288	19.456	18.975
Target Compounds						
3) MA gamma-BHC...	4.121	3.525	287189	3929492	0.098	1.315 #
4) MA Heptachlor	4.696f	3.858	528082	880015	0.179	0.277 #
5) MB Aldrin	5.030f	4.114f	442897	8091350	0.162	2.743 #
6) B beta-BHC	4.318	3.825	445978	89126	0.327	0.067 #
7) B delta-BHC	0.000	4.052	0	231666	N.D.	0.080 #
9) A Endosulfan I	5.849	5.003	275419	26767	0.117	0.010 #
10) B gamma-Chl...	0.000	4.896	0	444424	N.D.	0.157 #
11) B alpha-Chl...	0.000	4.941f	0	817315	N.D.	0.285 #
12) B 4,4'-DDE	5.987	5.152	265492	267111	0.119	0.113
13) MA Dieldrin	6.144	5.281	303084	152283	0.127	0.056 #
15) B Endosulfa...	6.559f	0.000	688509	0	0.300	N.D. #
16) A 4,4'-DDD	6.500	5.708	781284	-217385	0.426	N.D. #
17) MA 4,4'-DDT	6.787f	5.951	563775	-45262	0.271	N.D. #
21) B Endrin ke...	7.396f	6.755	285271	-19052	0.129	N.D. #
23) Chlordane-1	4.527f	3.702	282516	502828	3.317	6.175 #
24) Chlordane-2	5.030	4.241f	442897	984907	4.592	10.924 #
25) Chlordane-3	0.000	4.896	0	444424	N.D.	1.685 #
26) Chlordane-4	0.000	4.941f	0	817315	N.D.	3.035 #
27) Chlordane-5	0.000	5.652f	0	477107	N.D.	6.705 #

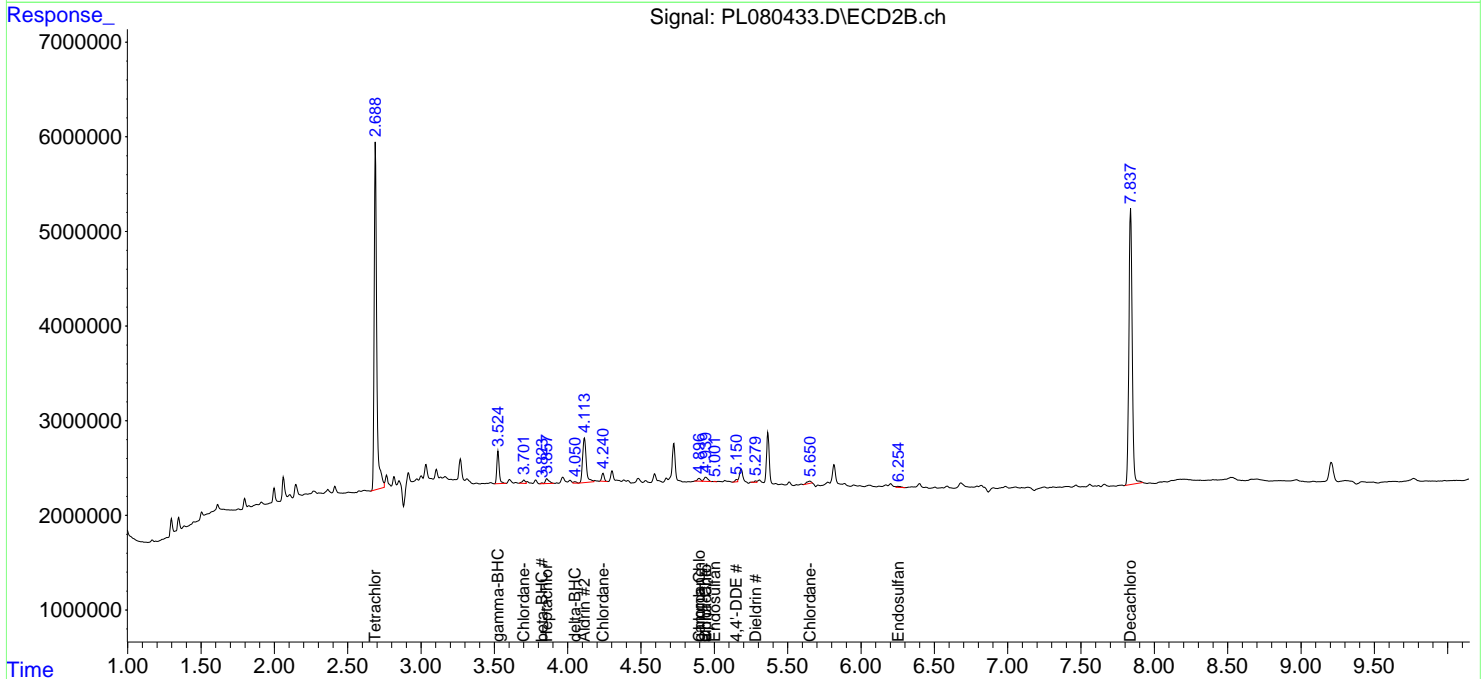
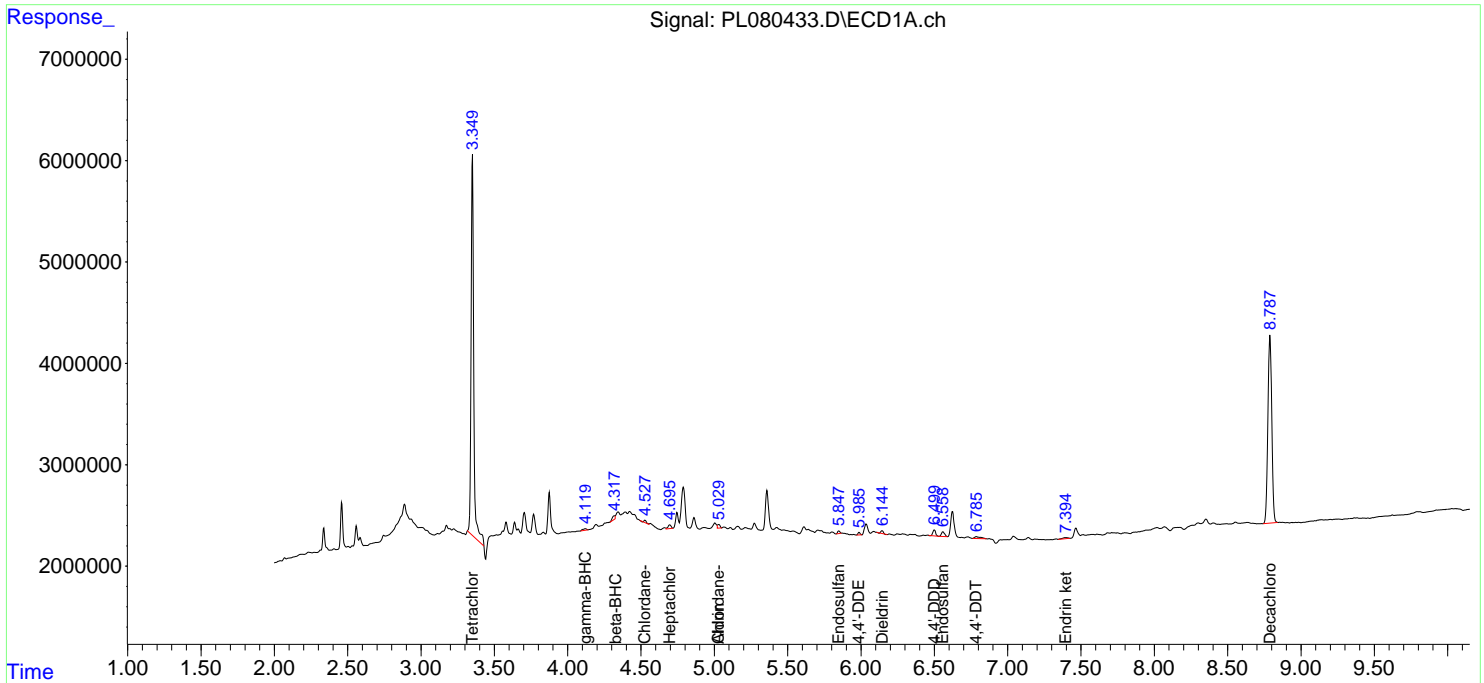
(f)=RT Delta > 1/2 Window (#)=Amounts differ by > 25% (m)=manual int.

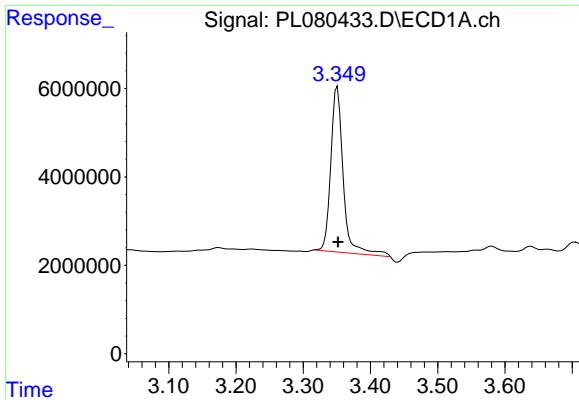
Data Path : Z:\pestpcbsrv\HPCHEM1\ECD_L\Data\PL012023\
 Data File : PL080433.D
 Signal(s) : Signal #1: ECD1A.ch Signal #2: ECD2B.ch
 Acq On : 20 Jan 2023 21:37
 Operator : AR\AJ
 Sample : 01232-04
 Misc :
 ALS Vial : 33 Sample Multiplier: 1

Instrument :
 ECD_L
 ClientSampleId :
 B-P-18A

Integration File signal 1: autoint1.e
 Integration File signal 2: autoint2.e
 Quant Time: Jan 21 06:14:33 2023
 Quant Method : Z:\pestpcbsrv\HPCHEM1\ECD_L\methods\PL012023.M
 Quant Title : GC Extractables
 QLast Update : Fri Jan 20 17:01:11 2023
 Response via : Initial Calibration
 Integrator: ChemStation

Volume Inj. : 1 µl
 Signal #1 Phase : ZB-MR2 Signal #2 Phase: ZB-MR1
 Signal #1 Info : 30M x 0.32mm x0.2 Signal #2 Info : 30M x 0.32mm x0.5µm

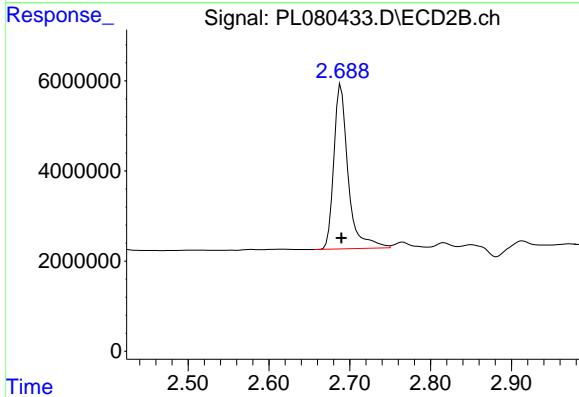




#1 Tetrachloro-m-xylene

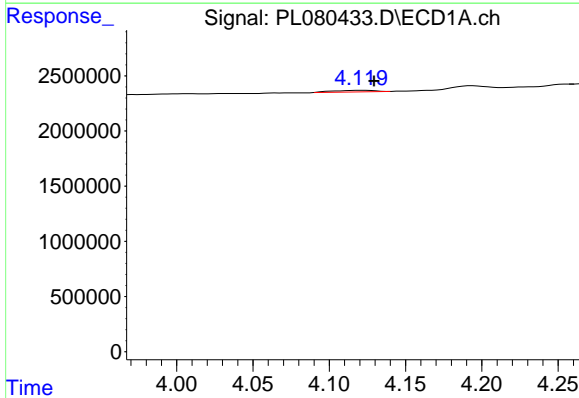
R.T.: 3.351 min
 Delta R.T.: -0.001 min
 Response: 47582577
 Conc: 22.18 ng/ml

Instrument :
 ECD_L
 ClientSampleId :
 B-P-18A



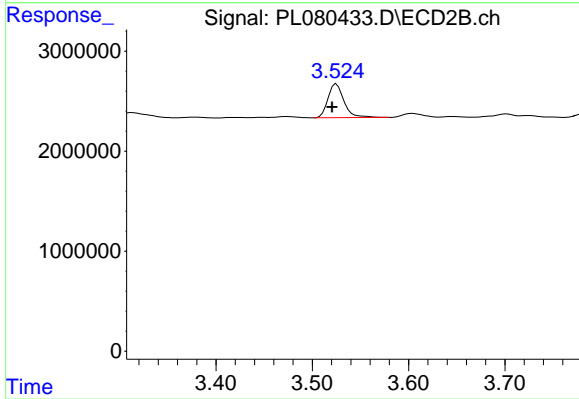
#1 Tetrachloro-m-xylene

R.T.: 2.689 min
 Delta R.T.: 0.000 min
 Response: 44936522
 Conc: 20.46 ng/ml



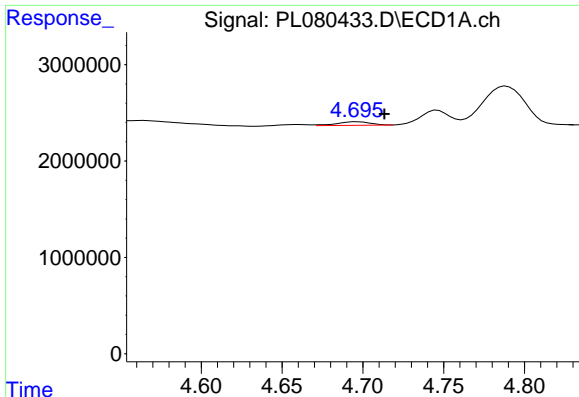
#3 gamma-BHC (Lindane)

R.T.: 4.121 min
 Delta R.T.: -0.009 min
 Response: 287189
 Conc: 0.10 ng/ml



#3 gamma-BHC (Lindane)

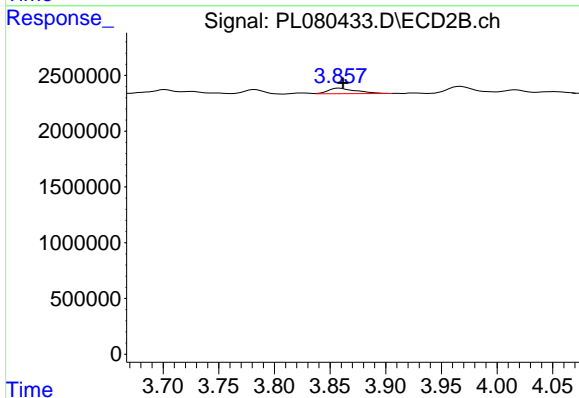
R.T.: 3.525 min
 Delta R.T.: 0.005 min
 Response: 3929492
 Conc: 1.32 ng/ml



#4 Heptachlor

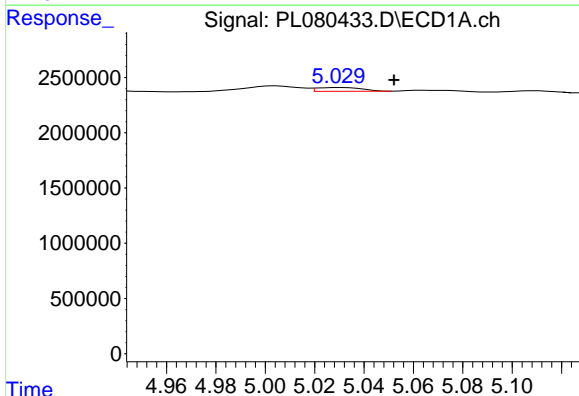
R.T.: 4.696 min
 Delta R.T.: -0.017 min
 Response: 528082
 Conc: 0.18 ng/ml

Instrument :
 ECD_L
 ClientSampleId :
 B-P-18A



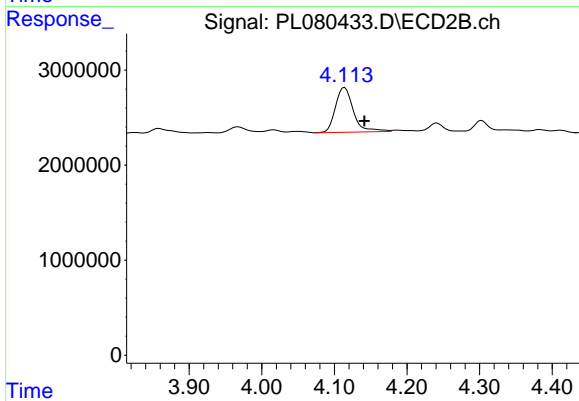
#4 Heptachlor

R.T.: 3.858 min
 Delta R.T.: -0.003 min
 Response: 880015
 Conc: 0.28 ng/ml



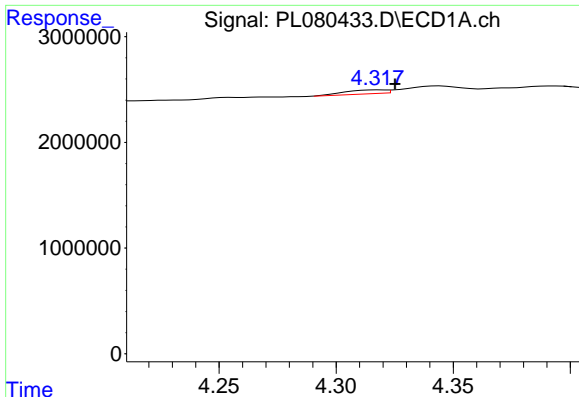
#5 Aldrin

R.T.: 5.030 min
 Delta R.T.: -0.022 min
 Response: 442897
 Conc: 0.16 ng/ml



#5 Aldrin

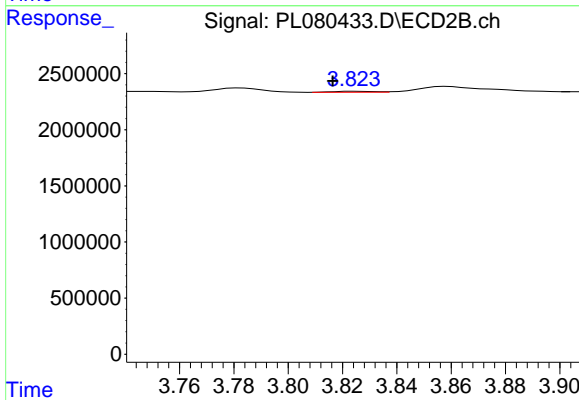
R.T.: 4.114 min
 Delta R.T.: -0.027 min
 Response: 8091350
 Conc: 2.74 ng/ml



#6 beta-BHC

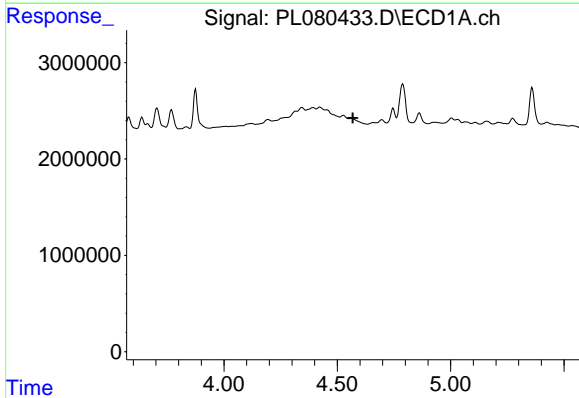
R.T.: 4.318 min
 Delta R.T.: -0.007 min
 Response: 445978
 Conc: 0.33 ng/ml

Instrument :
 ECD_L
 ClientSampleId :
 B-P-18A



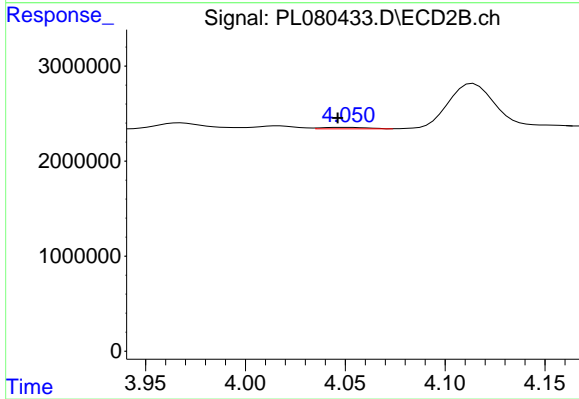
#6 beta-BHC

R.T.: 3.825 min
 Delta R.T.: 0.008 min
 Response: 89126
 Conc: 0.07 ng/ml



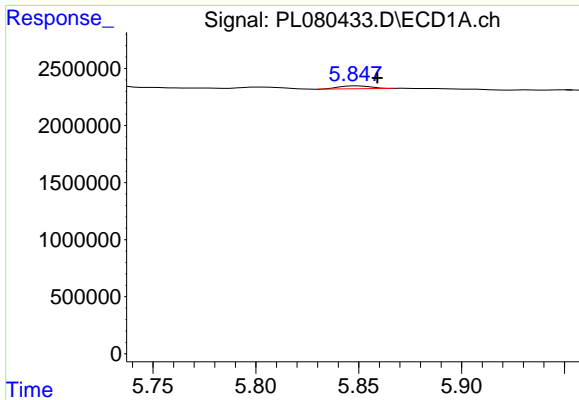
#7 delta-BHC

R.T.: 0.000 min
 Exp R.T. : 4.568 min
 Response: 0
 Conc: N.D.



#7 delta-BHC

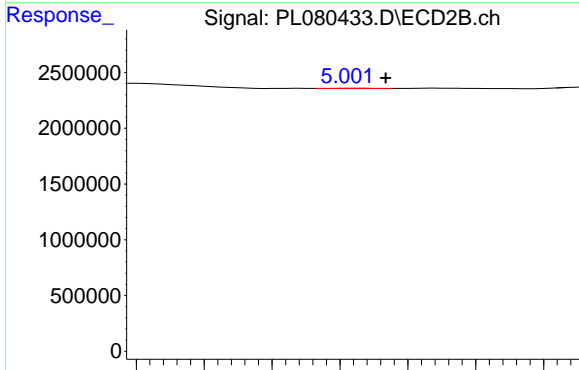
R.T.: 4.052 min
 Delta R.T.: 0.005 min
 Response: 231666
 Conc: 0.08 ng/ml



#9 Endosulfan I

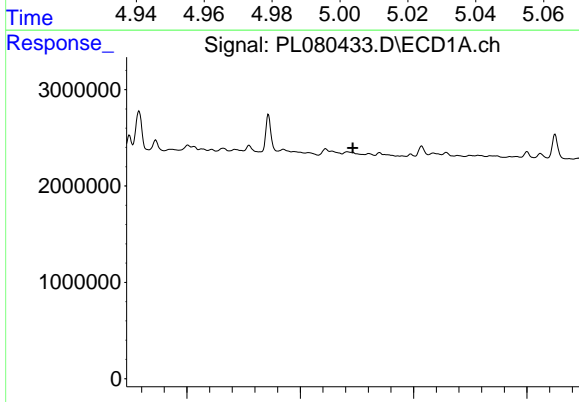
R.T.: 5.849 min
 Delta R.T.: -0.010 min
 Response: 275419
 Conc: 0.12 ng/ml

Instrument :
 ECD_L
 ClientSampleId :
 B-P-18A



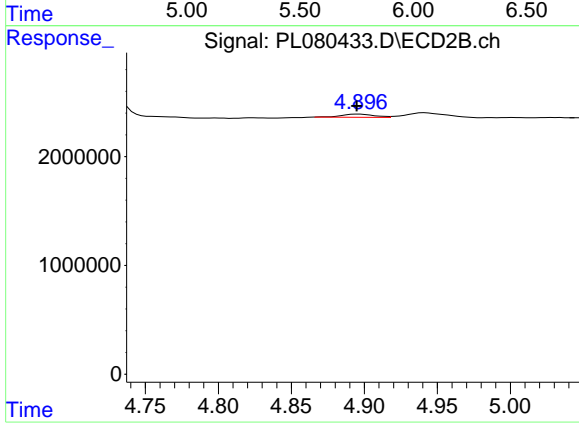
#9 Endosulfan I

R.T.: 5.003 min
 Delta R.T.: -0.010 min
 Response: 26767
 Conc: 0.01 ng/ml



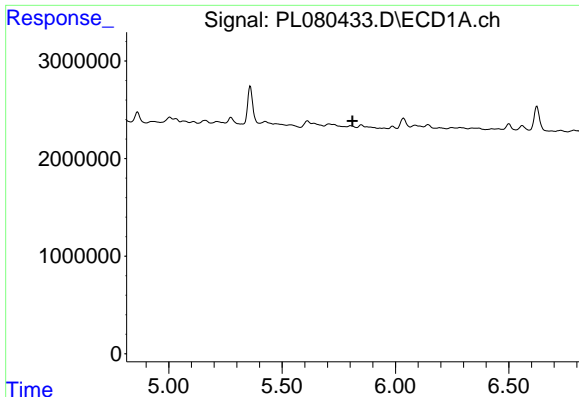
#10 gamma-Chlordane

R.T.: 0.000 min
 Exp R.T. : 5.732 min
 Response: 0
 Conc: N.D.



#10 gamma-Chlordane

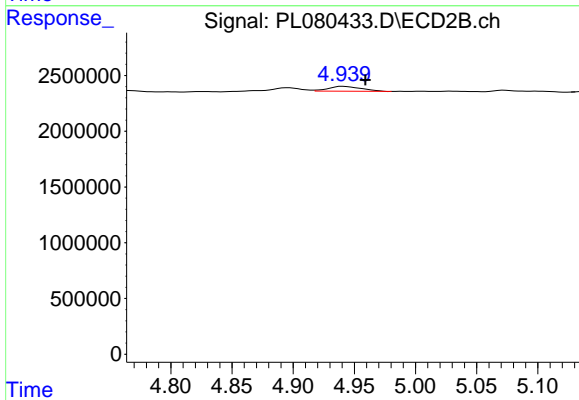
R.T.: 4.896 min
 Delta R.T.: 0.002 min
 Response: 444424
 Conc: 0.16 ng/ml



#11 alpha-Chlordane

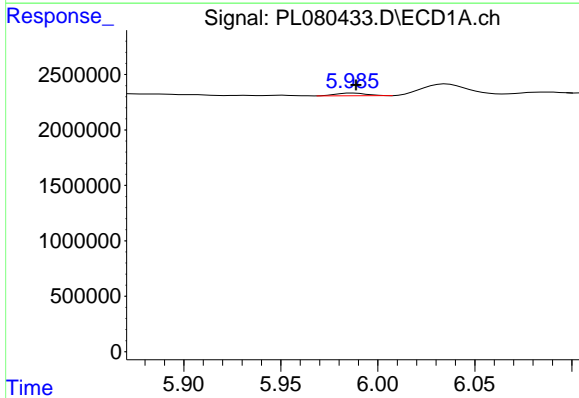
R.T.: 0.000 min
 Exp R.T.: 5.811 min
 Response: 0
 Conc: N.D.

Instrument :
 ECD_L
 ClientSampleId :
 B-P-18A



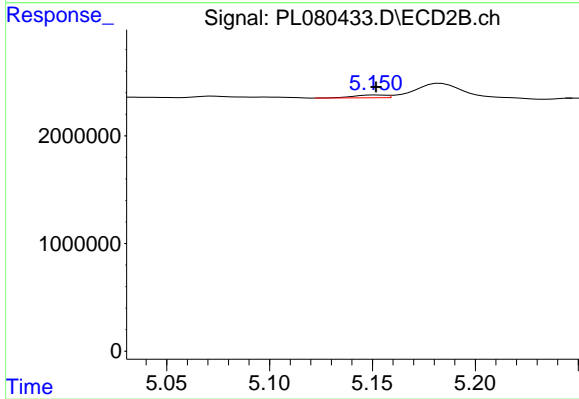
#11 alpha-Chlordane

R.T.: 4.941 min
 Delta R.T.: -0.018 min
 Response: 817315
 Conc: 0.29 ng/ml



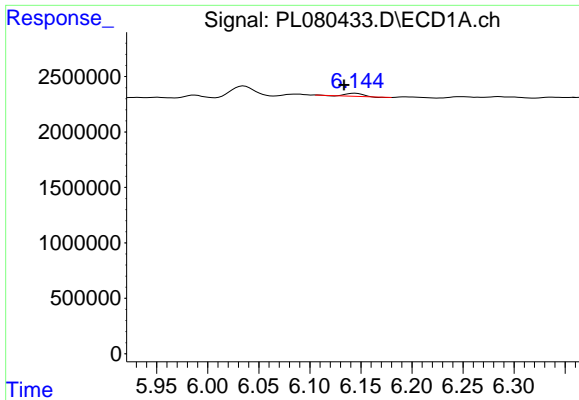
#12 4,4'-DDE

R.T.: 5.987 min
 Delta R.T.: -0.002 min
 Response: 265492
 Conc: 0.12 ng/ml



#12 4,4'-DDE

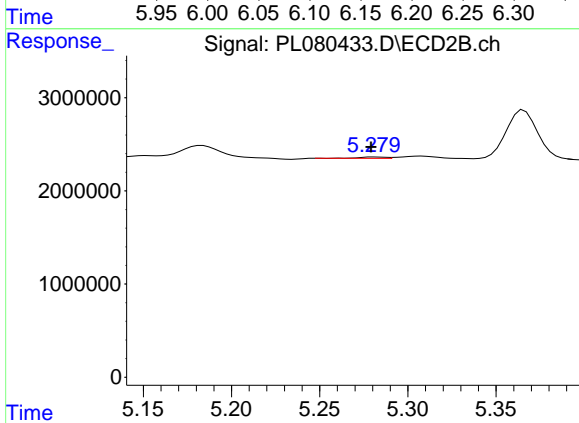
R.T.: 5.152 min
 Delta R.T.: 0.000 min
 Response: 267111
 Conc: 0.11 ng/ml



#13 Dieldrin

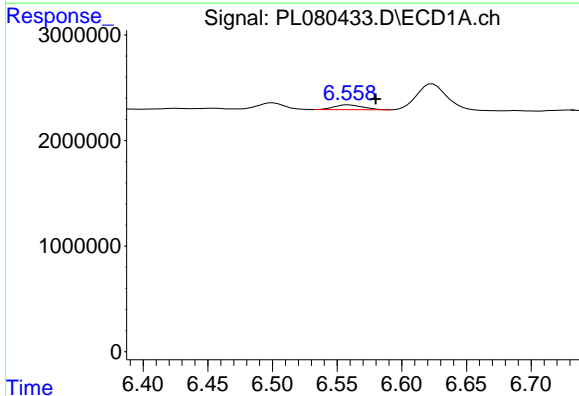
R.T.: 6.144 min
 Delta R.T.: 0.011 min
 Response: 303084
 Conc: 0.13 ng/ml

Instrument :
 ECD_L
 ClientSampleId :
 B-P-18A



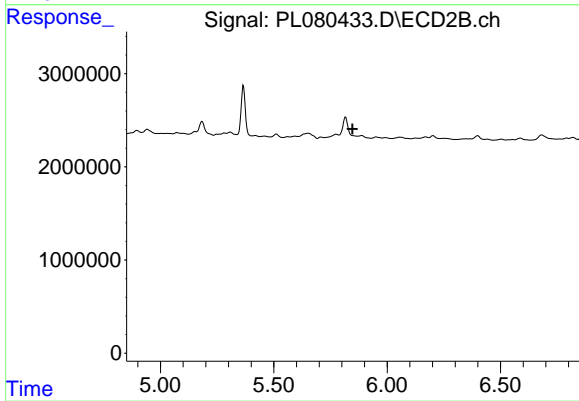
#13 Dieldrin

R.T.: 5.281 min
 Delta R.T.: 0.002 min
 Response: 152283
 Conc: 0.06 ng/ml



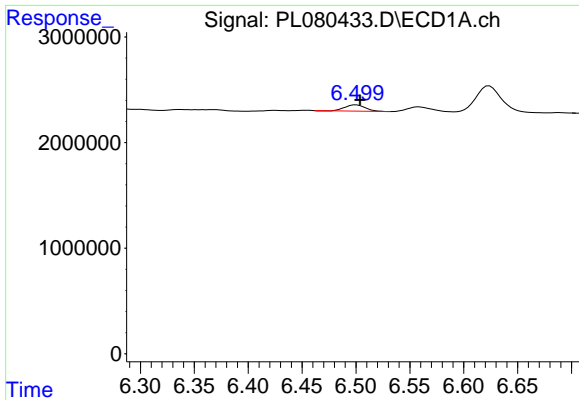
#15 Endosulfan II

R.T.: 6.559 min
 Delta R.T.: -0.021 min
 Response: 688509
 Conc: 0.30 ng/ml



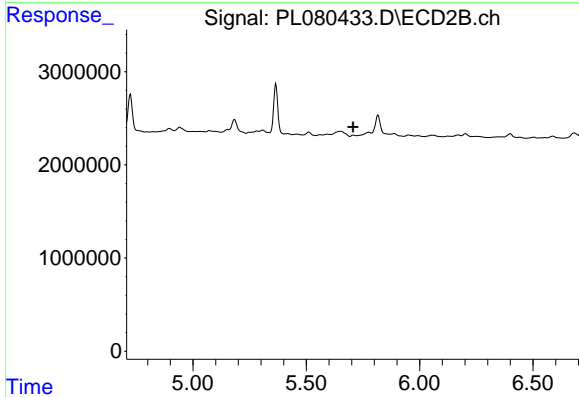
#15 Endosulfan II

R.T.: 0.000 min
 Exp R.T. : 5.848 min
 Response: 0
 Conc: N.D.

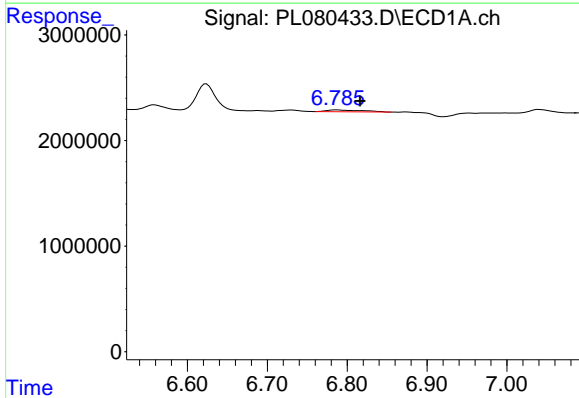


#16 4,4'-DDD
 R.T.: 6.500 min
 Delta R.T.: -0.004 min
 Response: 781284
 Conc: 0.43 ng/ml

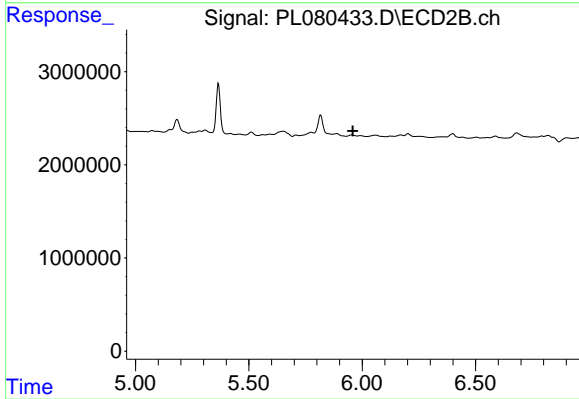
Instrument :
 ECD_L
 ClientSampleId :
 B-P-18A



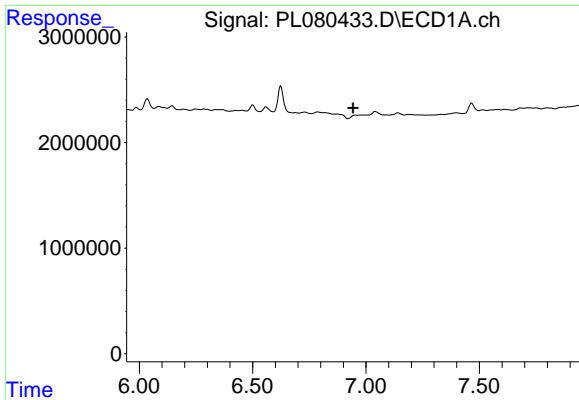
#16 4,4'-DDD
 R.T.: 5.708 min
 Delta R.T.: 0.001 min
 Response: -217385
 Conc: N.D.



#17 4,4'-DDT
 R.T.: 6.787 min
 Delta R.T.: -0.029 min
 Response: 563775
 Conc: 0.27 ng/ml



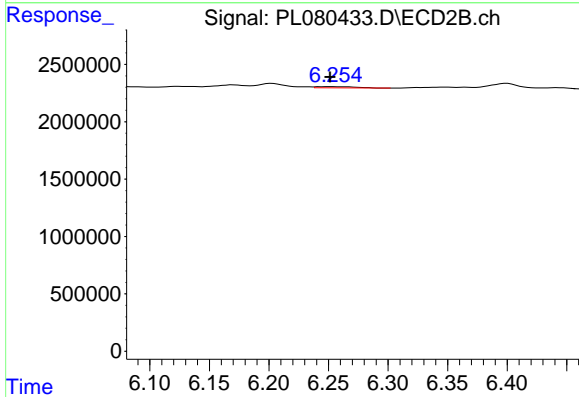
#17 4,4'-DDT
 R.T.: 5.951 min
 Delta R.T.: -0.007 min
 Response: -45262
 Conc: N.D.



#19 Endosulfan Sulfate

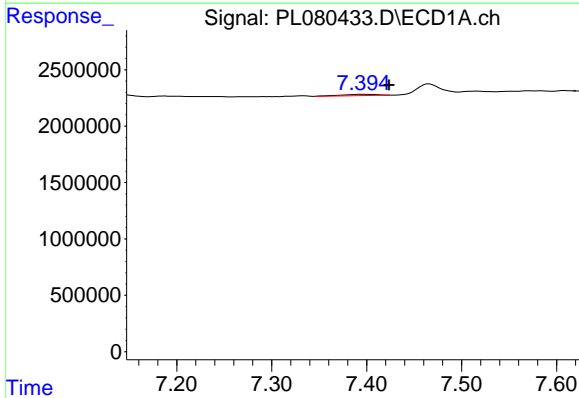
R.T.: 6.953 min
 Delta R.T.: 0.011 min
 Response: -196638
 Conc: N.D.

Instrument :
 ECD_L
 ClientSampleId :
 B-P-18A



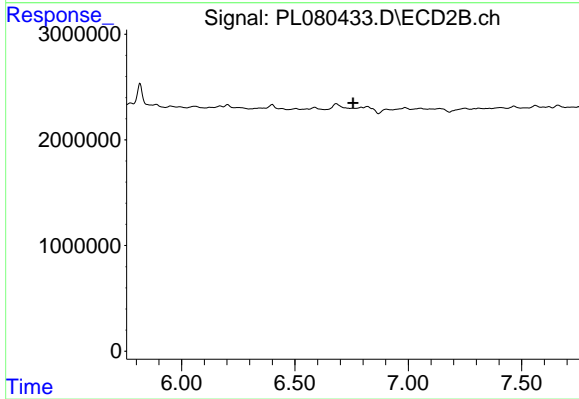
#19 Endosulfan Sulfate

R.T.: 6.252 min
 Delta R.T.: 0.001 min
 Response: 218850
 Conc: 0.09 ng/ml



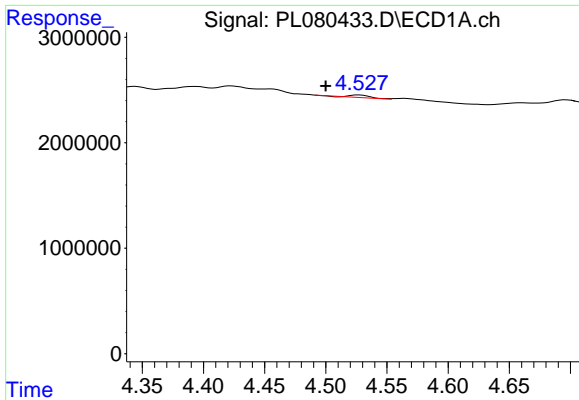
#21 Endrin ketone

R.T.: 7.396 min
 Delta R.T.: -0.028 min
 Response: 285271
 Conc: 0.13 ng/ml



#21 Endrin ketone

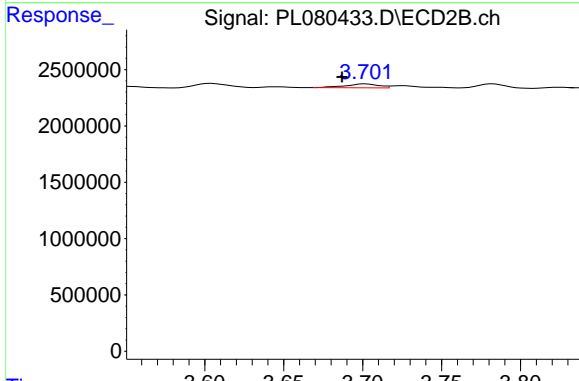
R.T.: 6.755 min
 Delta R.T.: 0.000 min
 Response: -19052
 Conc: N.D.



#23 Chlordane-1

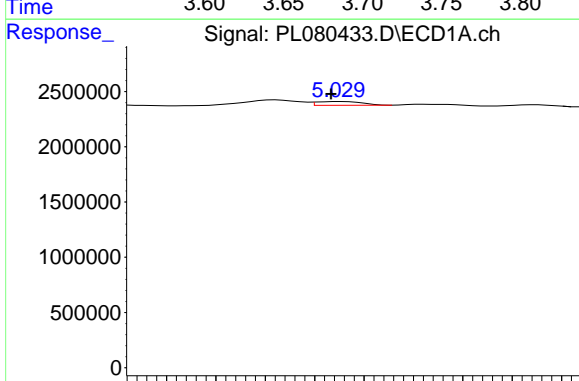
R.T.: 4.527 min
 Delta R.T.: 0.027 min
 Response: 282516
 Conc: 3.32 ng/ml

Instrument :
 ECD_L
 ClientSampleId :
 B-P-18A



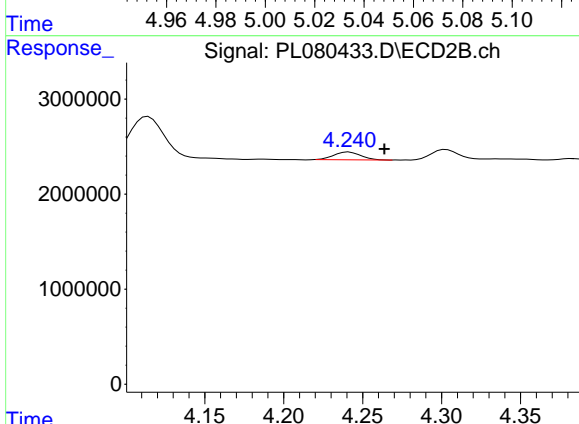
#23 Chlordane-1

R.T.: 3.702 min
 Delta R.T.: 0.015 min
 Response: 502828
 Conc: 6.18 ng/ml



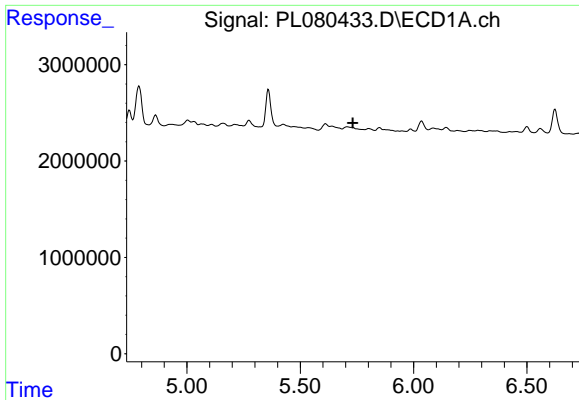
#24 Chlordane-2

R.T.: 5.030 min
 Delta R.T.: 0.004 min
 Response: 442897
 Conc: 4.59 ng/ml



#24 Chlordane-2

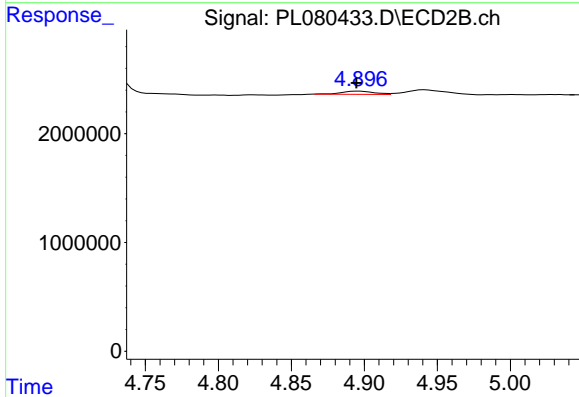
R.T.: 4.241 min
 Delta R.T.: -0.022 min
 Response: 984907
 Conc: 10.92 ng/ml



#25 Chlordane-3

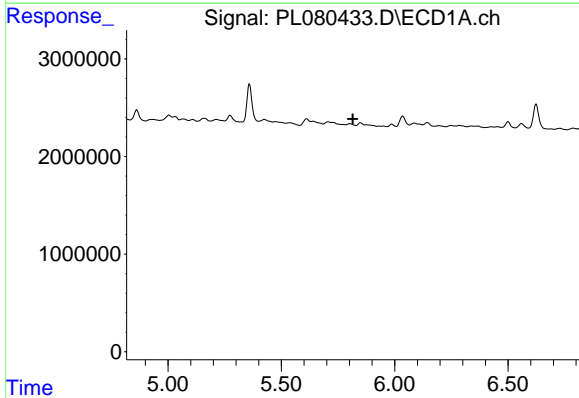
R.T.: 0.000 min
 Exp R.T. : 5.732 min
 Response: 0
 Conc: N.D.

Instrument :
 ECD_L
 ClientSampleId :
 B-P-18A



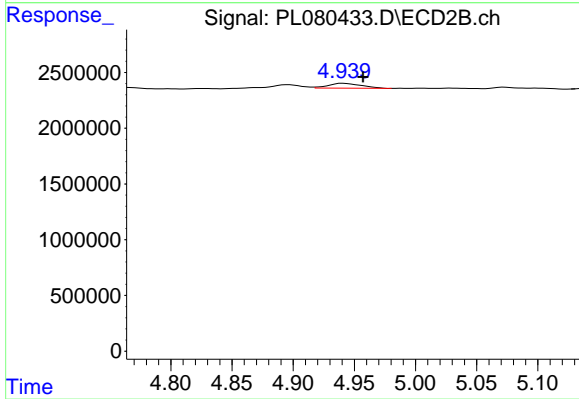
#25 Chlordane-3

R.T.: 4.896 min
 Delta R.T.: 0.002 min
 Response: 444424
 Conc: 1.69 ng/ml



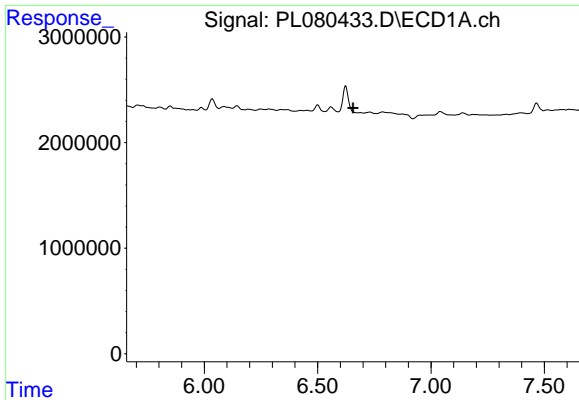
#26 Chlordane-4

R.T.: 0.000 min
 Exp R.T. : 5.815 min
 Response: 0
 Conc: N.D.



#26 Chlordane-4

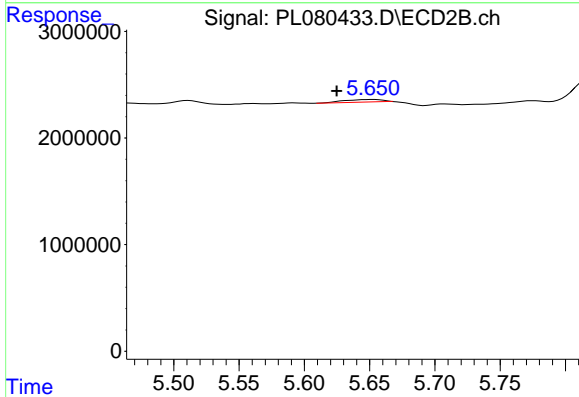
R.T.: 4.941 min
 Delta R.T.: -0.016 min
 Response: 817315
 Conc: 3.03 ng/ml



#27 Chlordane-5

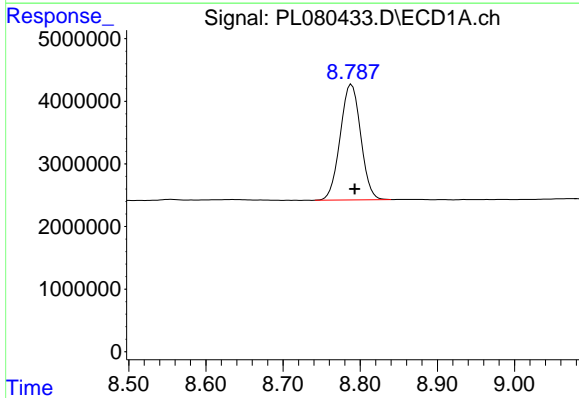
R.T.: 0.000 min
 Exp R.T.: 6.656 min
 Response: 0
 Conc: N.D.

Instrument :
 ECD_L
 ClientSampleId :
 B-P-18A



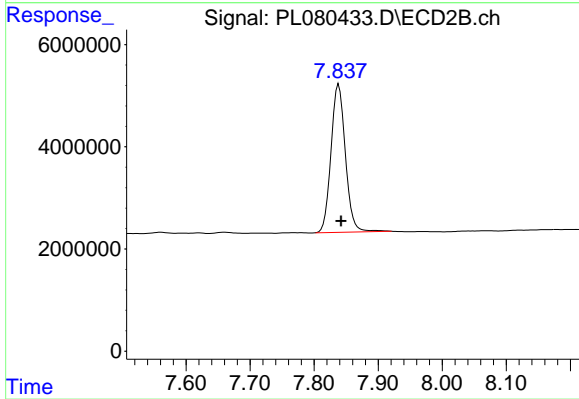
#27 Chlordane-5

R.T.: 5.652 min
 Delta R.T.: 0.028 min
 Response: 477107
 Conc: 6.71 ng/ml



#28 Decachlorobiphenyl

R.T.: 8.789 min
 Delta R.T.: -0.004 min
 Response: 34062850
 Conc: 19.46 ng/ml



#28 Decachlorobiphenyl

R.T.: 7.838 min
 Delta R.T.: -0.003 min
 Response: 45209288
 Conc: 18.98 ng/ml