

Data Path : Z:\pestpcbsrv\HPCHEM1\ECD_L\Data\PL012023\
 Data File : PL080418.D
 Signal(s) : Signal #1: ECD1A.ch Signal #2: ECD2B.ch
 Acq On : 20 Jan 2023 16:59
 Operator : AR\AJ
 Sample : PTOXICC1000
 Misc :
 ALS Vial : 15 Sample Multiplier: 1

Instrument :
 ECD_L
 ClientSampleId :
 PTOXICC1000

Integration File signal 1: autoint1.e
 Integration File signal 2: autoint2.e
 Quant Time: Jan 20 17:40:32 2023
 Quant Method : Z:\pestpcbsrv\HPCHEM1\ECD_L\methods\LTX012023.M
 Quant Title : GC Extractables
 QLast Update : Fri Jan 20 17:40:03 2023
 Response via : Initial Calibration
 Integrator: ChemStation

Volume Inj. : 2 µl
 Signal #1 Phase : Rtx-CLPesticide 1 Signal #2 Phase: Rtx-CLPesticide 1
 Signal #1 Info : 30M x 0.32mm x0.3 Signal #2 Info : 30M x 0.32mm x 0.25µm

Compound	RT#1	RT#2	Resp#1	Resp#2	ng/ml	ng/ml

System Monitoring Compounds						
1) SA Tetrachlo...	3.352	2.689	211.8E6	225.0E6	101.600	102.116
7) SA Decachlor...	8.790	7.840	173.8E6	226.5E6	100.737	100.048
Target Compounds						
2) Toxaphene-1	6.028	5.244	17607098	14116473	1061.966	1019.760
3) Toxaphene-2	6.845	5.884	69256325	16810234	1027.619	1022.236
4) Toxaphene-3	6.934	6.518	48820351	55876171	1006.115	1039.773
5) Toxaphene-4	7.032	6.647	27509139	78161823	1022.688	1065.162
6) Toxaphene-5	7.352	6.959	38526549	33505683	1025.400	1075.141

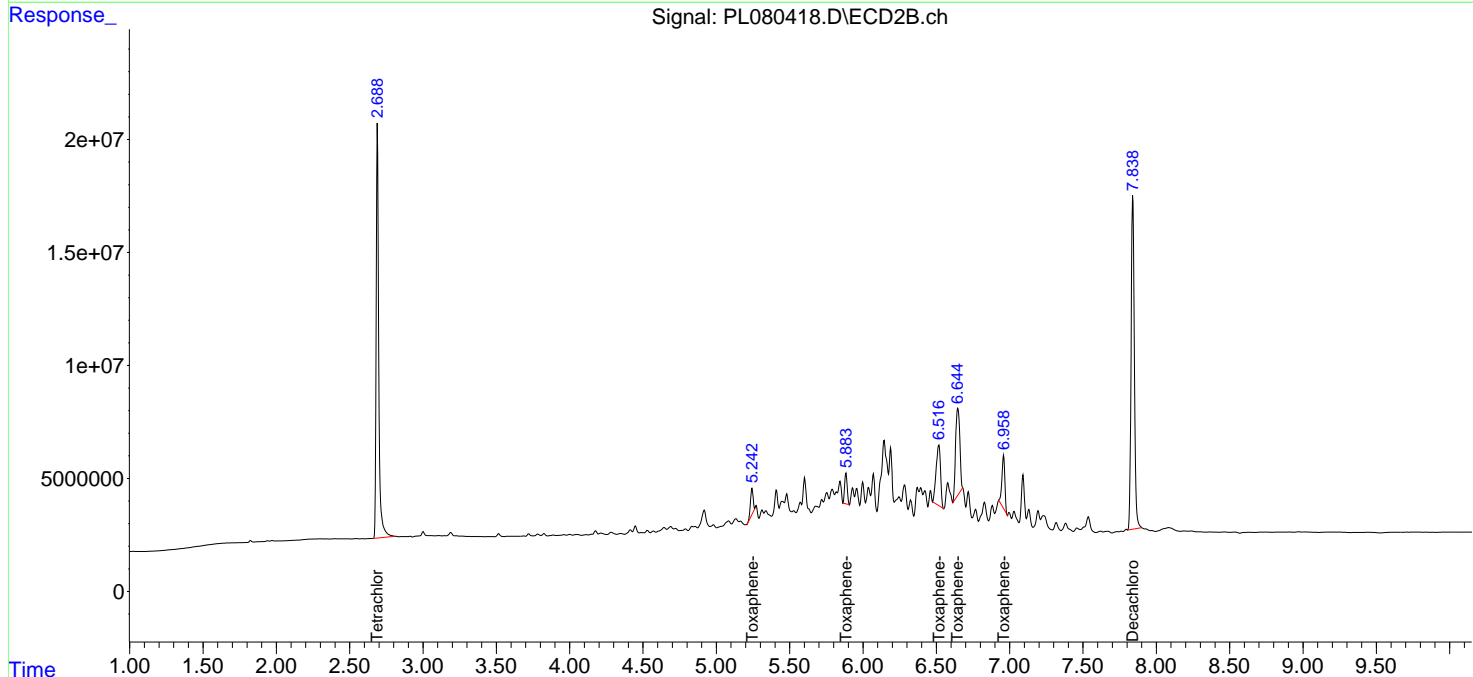
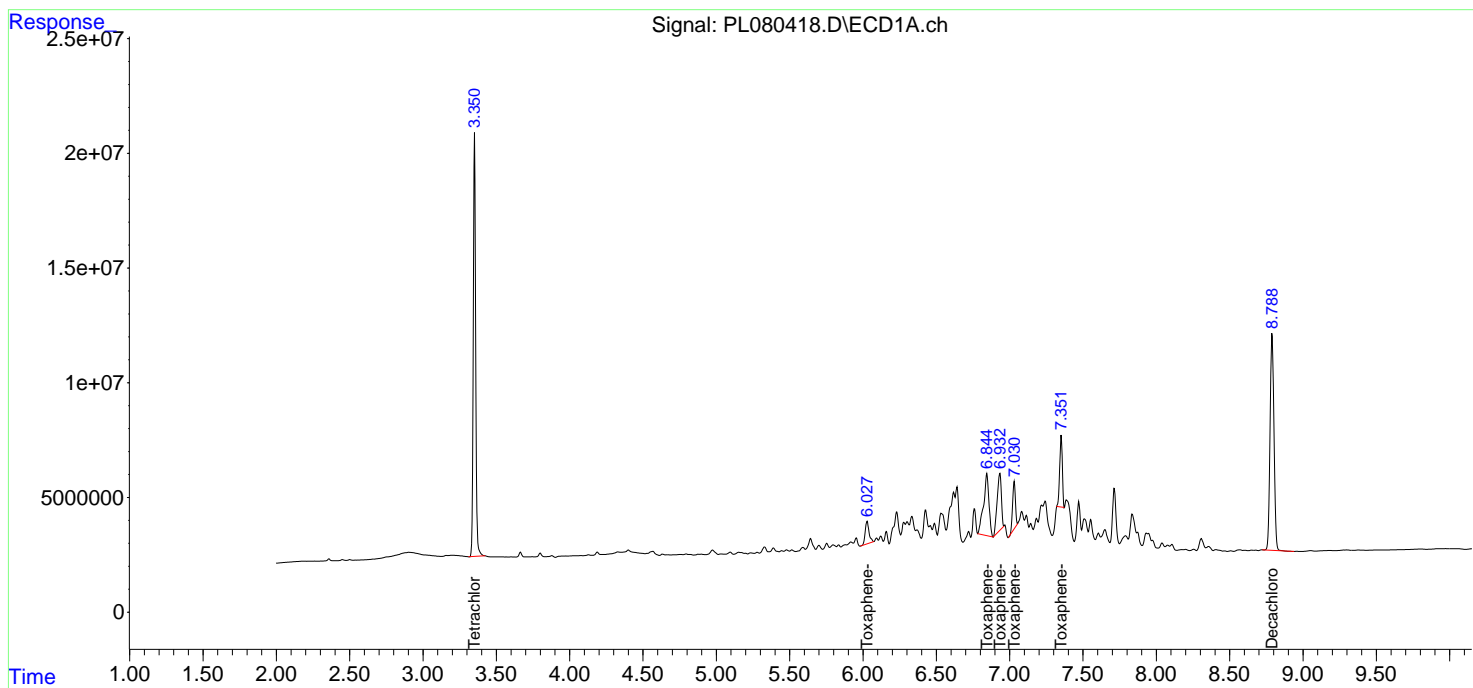
(f)=RT Delta > 1/2 Window (#)=Amounts differ by > 25% (m)=manual int.

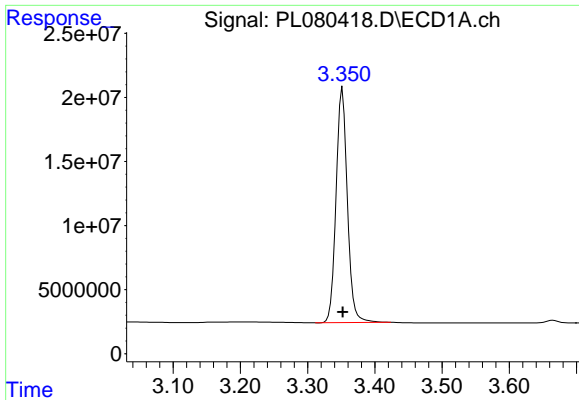
Data Path : Z:\pestpcbsrv\HPCHEM1\ECD_L\Data\PL012023\
 Data File : PL080418.D
 Signal(s) : Signal #1: ECD1A.ch Signal #2: ECD2B.ch
 Acq On : 20 Jan 2023 16:59
 Operator : AR\AJ
 Sample : PTOXICC1000
 Misc :
 ALS Vial : 15 Sample Multiplier: 1

Instrument :
 ECD_L
 ClientSampleId :
 PTOXICC1000

Integration File signal 1: autoint1.e
 Integration File signal 2: autoint2.e
 Quant Time: Jan 20 17:40:32 2023
 Quant Method : Z:\pestpcbsrv\HPCHEM1\ECD_L\methods\LTX012023.M
 Quant Title : GC Extractables
 QLast Update : Fri Jan 20 17:40:03 2023
 Response via : Initial Calibration
 Integrator: ChemStation

Volume Inj. : 2 µl
 Signal #1 Phase : Rtx-CLPesticide 1 Signal #2 Phase: Rtx-CLPesticide 1
 Signal #1 Info : 30M x 0.32mm x0.3 Signal #2 Info : 30M x 0.32mm x 0.25µm

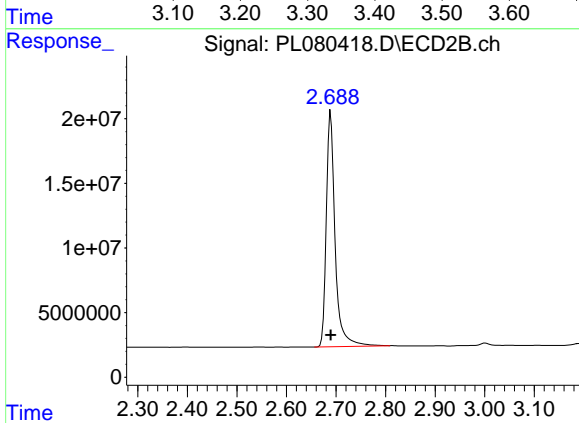




#1 Tetrachloro-m-xylene

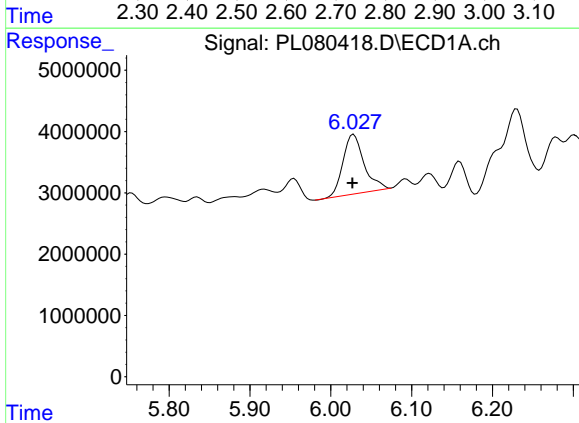
R.T.: 3.352 min
 Delta R.T.: 0.000 min
 Response: 211811891
 Conc: 101.60 ng/ml

Instrument :
 ECD_L
 ClientSampleId :
 PTOXICC1000



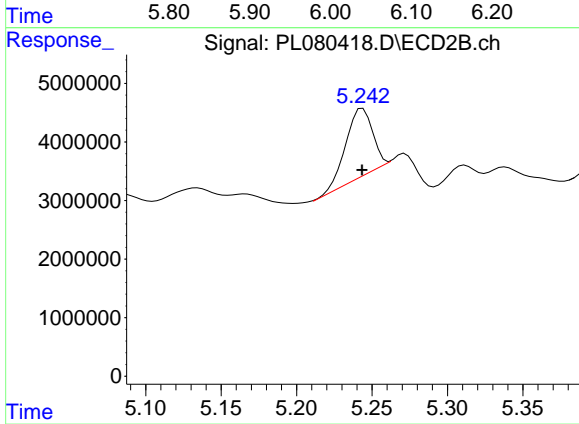
#1 Tetrachloro-m-xylene

R.T.: 2.689 min
 Delta R.T.: 0.000 min
 Response: 225014885
 Conc: 102.12 ng/ml



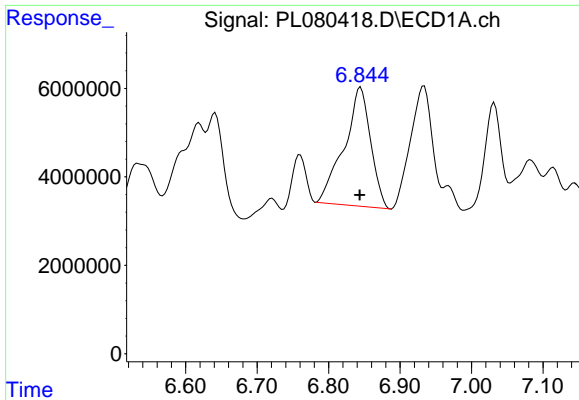
#2 Toxaphene-1

R.T.: 6.028 min
 Delta R.T.: 0.001 min
 Response: 17607098
 Conc: 1061.97 ng/ml



#2 Toxaphene-1

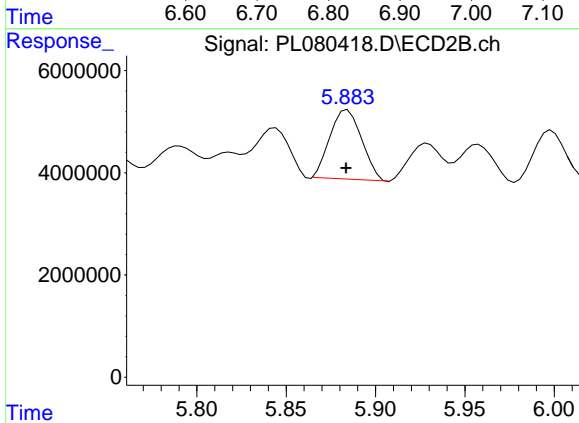
R.T.: 5.244 min
 Delta R.T.: 0.000 min
 Response: 14116473
 Conc: 1019.76 ng/ml



#3 Toxaphene-2

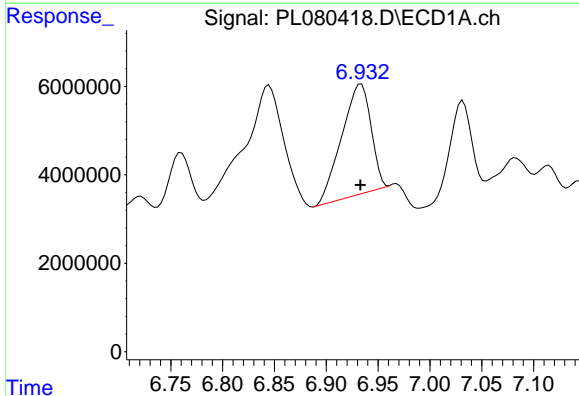
R.T.: 6.845 min
 Delta R.T.: 0.001 min
 Response: 69256325
 Conc: 1027.62 ng/ml

Instrument :
 ECD_L
 ClientSampleId :
 PTOXICC1000



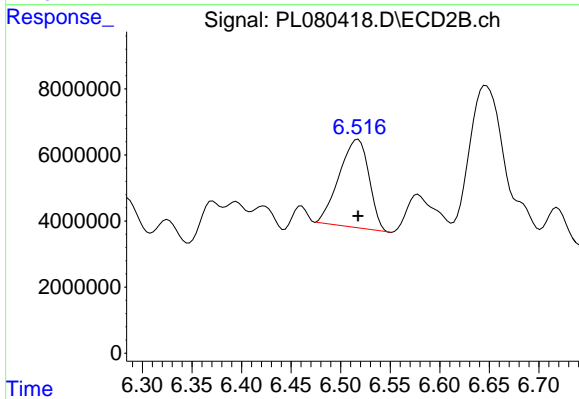
#3 Toxaphene-2

R.T.: 5.884 min
 Delta R.T.: 0.000 min
 Response: 16810234
 Conc: 1022.24 ng/ml



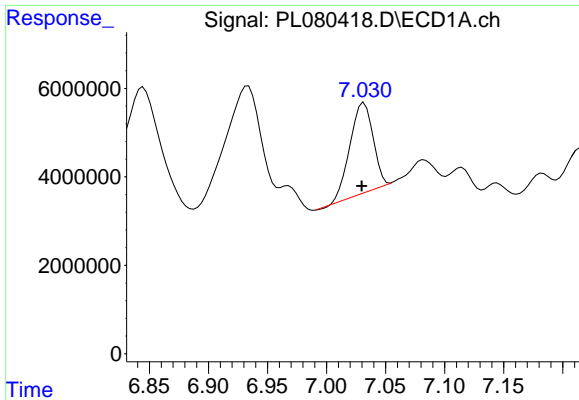
#4 Toxaphene-3

R.T.: 6.934 min
 Delta R.T.: 0.000 min
 Response: 48820351
 Conc: 1006.11 ng/ml



#4 Toxaphene-3

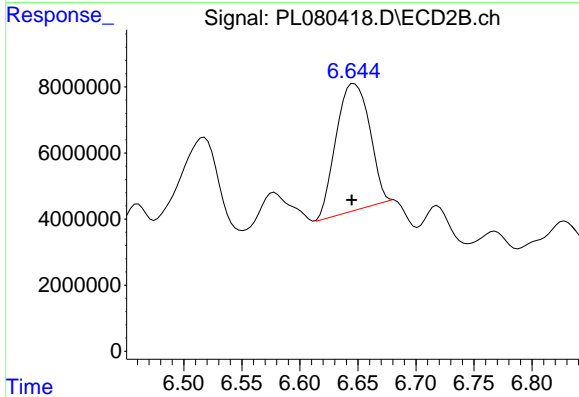
R.T.: 6.518 min
 Delta R.T.: 0.000 min
 Response: 55876171
 Conc: 1039.77 ng/ml



#5 Toxaphene-4

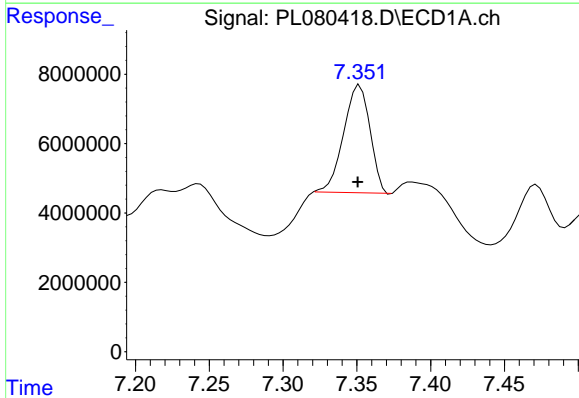
R.T.: 7.032 min
 Delta R.T.: 0.002 min
 Response: 27509139
 Conc: 1022.69 ng/m

Instrument :
 ECD_L
 ClientSampleId :
 PTOXICC1000



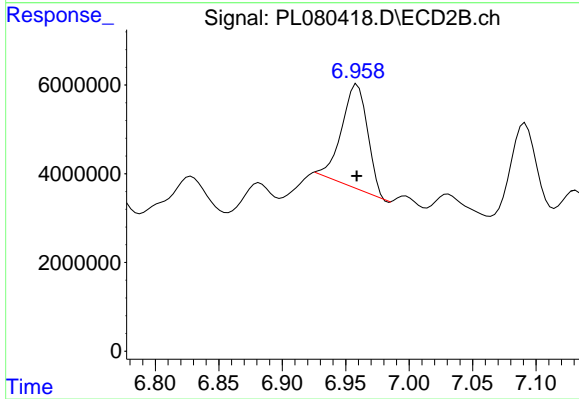
#5 Toxaphene-4

R.T.: 6.647 min
 Delta R.T.: 0.002 min
 Response: 78161823
 Conc: 1065.16 ng/ml



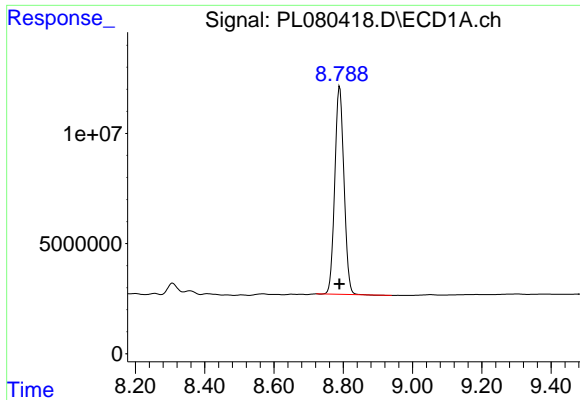
#6 Toxaphene-5

R.T.: 7.352 min
 Delta R.T.: 0.002 min
 Response: 38526549
 Conc: 1025.40 ng/ml



#6 Toxaphene-5

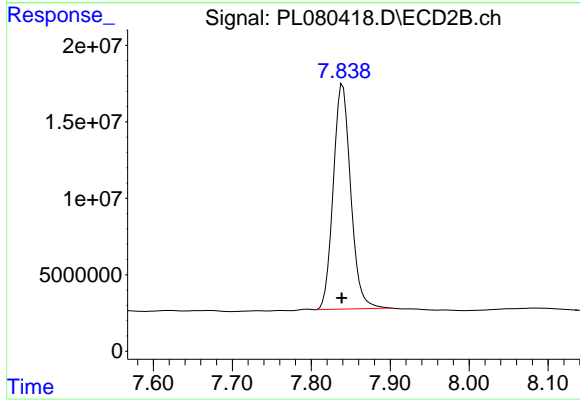
R.T.: 6.959 min
 Delta R.T.: 0.000 min
 Response: 33505683
 Conc: 1075.14 ng/ml



#7 Decachlorobiphenyl

R.T.: 8.790 min
Delta R.T.: 0.000 min
Response: 173839415
Conc: 100.74 ng/ml

Instrument :
ECD_L
ClientSampleId :
PTOXICC1000



#7 Decachlorobiphenyl

R.T.: 7.840 min
Delta R.T.: 0.001 min
Response: 226457100
Conc: 100.05 ng/ml