

Data Path : Z:\pestpcbsrv\HPCHEM1\ECD_L\Data\PL012023\
 Data File : PL080419.D
 Signal(s) : Signal #1: ECD1A.ch Signal #2: ECD2B.ch
 Acq On : 20 Jan 2023 17:13
 Operator : AR\AJ
 Sample : PTOXICC750
 Misc :
 ALS Vial : 16 Sample Multiplier: 1

Instrument :
 ECD_L
 ClientSampleId :
 PTOXICC750

Integration File signal 1: autoint1.e
 Integration File signal 2: autoint2.e
 Quant Time: Jan 20 17:40:38 2023
 Quant Method : Z:\pestpcbsrv\HPCHEM1\ECD_L\methods\LTX012023.M
 Quant Title : GC Extractables
 QLast Update : Fri Jan 20 17:40:03 2023
 Response via : Initial Calibration
 Integrator: ChemStation

Volume Inj. : 2 µl
 Signal #1 Phase : Rtx-CLPesticide 1 Signal #2 Phase: Rtx-CLPesticide 1
 Signal #1 Info : 30M x 0.32mm x0.3 Signal #2 Info : 30M x 0.32mm x 0.25µm

Compound	RT#1	RT#2	Resp#1	Resp#2	ng/ml	ng/ml

System Monitoring Compounds						
1) SA Tetrachlo...	3.351	2.689	154.9E6	163.8E6	74.300	74.335
7) SA Decachlor...	8.789	7.839	128.1E6	166.2E6	74.251	73.429
Target Compounds						
2) Toxaphene-1	6.028	5.243	12871029	10410383	776.312	752.036
3) Toxaphene-2	6.845	5.884	50510947	12087699	749.477	735.057
4) Toxaphene-3	6.933	6.517	36151056	40382207	745.019	751.453
5) Toxaphene-4	7.031	6.645	20505338	57054761	762.313	777.522
6) Toxaphene-5	7.352	6.958	28413230	23590619	756.230	756.983

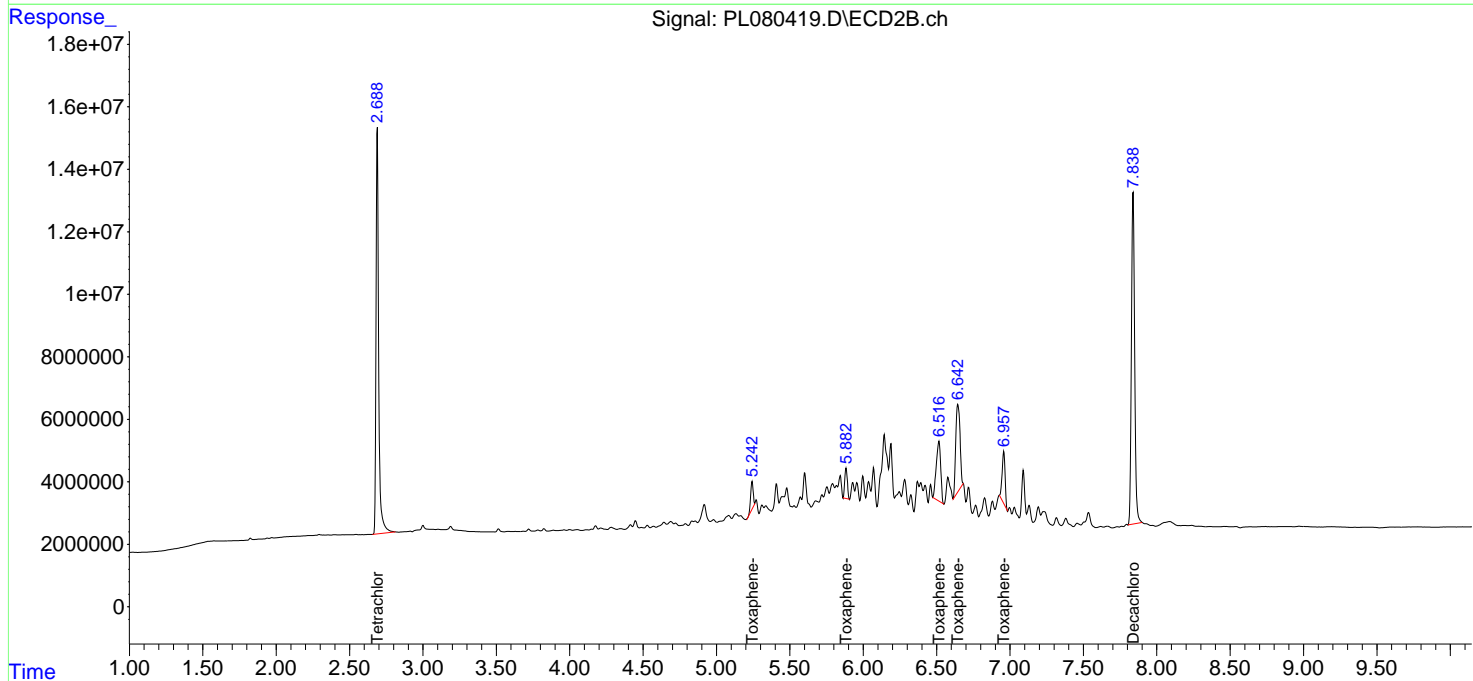
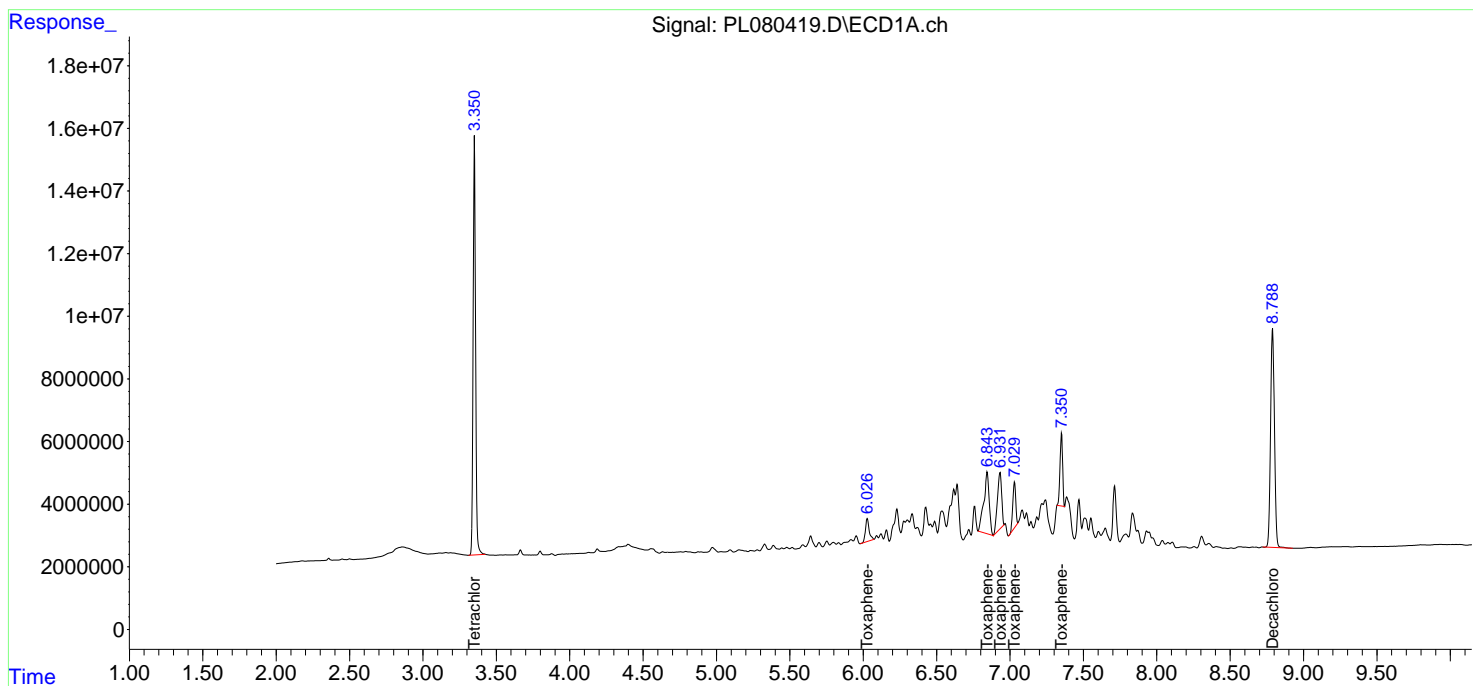
(f)=RT Delta > 1/2 Window (#)=Amounts differ by > 25% (m)=manual int.

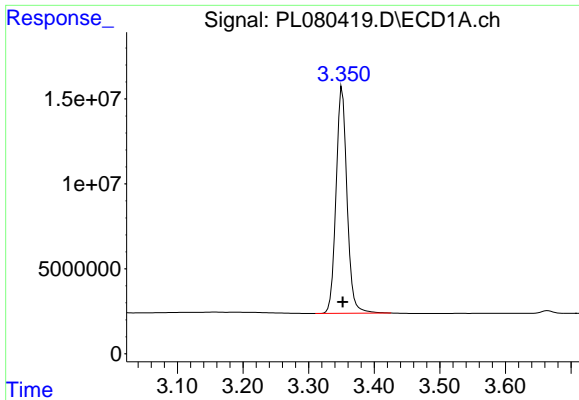
Data Path : Z:\pestpcbsrv\HPCHEM1\ECD_L\Data\PL012023\
 Data File : PL080419.D
 Signal(s) : Signal #1: ECD1A.ch Signal #2: ECD2B.ch
 Acq On : 20 Jan 2023 17:13
 Operator : AR\AJ
 Sample : PTOXICC750
 Misc :
 ALS Vial : 16 Sample Multiplier: 1

Instrument :
 ECD_L
 ClientSampleId :
 PTOXICC750

Integration File signal 1: autoint1.e
 Integration File signal 2: autoint2.e
 Quant Time: Jan 20 17:40:38 2023
 Quant Method : Z:\pestpcbsrv\HPCHEM1\ECD_L\methods\LTX012023.M
 Quant Title : GC Extractables
 QLast Update : Fri Jan 20 17:40:03 2023
 Response via : Initial Calibration
 Integrator: ChemStation

Volume Inj. : 2 µl
 Signal #1 Phase : Rtx-CLPesticide 1 Signal #2 Phase: Rtx-CLPesticide 1
 Signal #1 Info : 30M x 0.32mm x0.3 Signal #2 Info : 30M x 0.32mm x 0.25µm

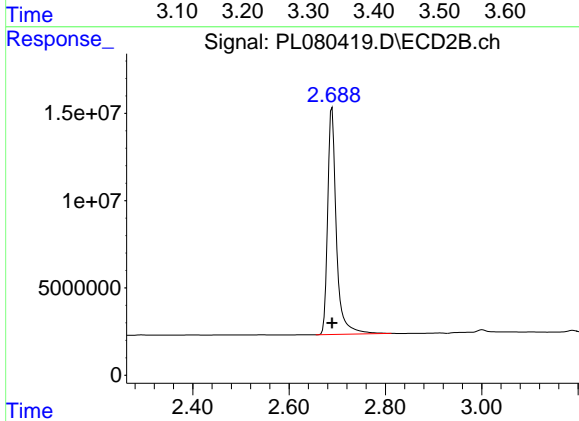




#1 Tetrachloro-m-xylene

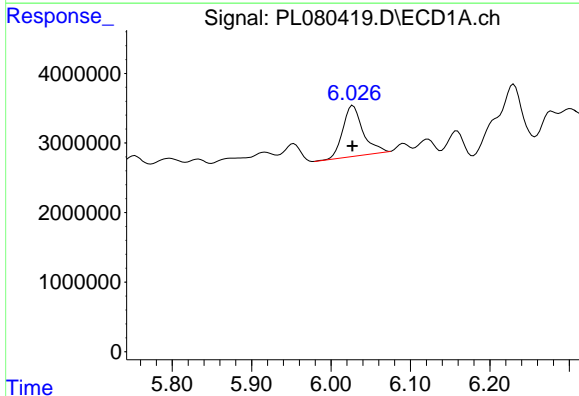
R.T.: 3.351 min
 Delta R.T.: 0.000 min
 Response: 154898403
 Conc: 74.30 ng/ml

Instrument :
 ECD_L
 ClientSampleId :
 PTOXICC750



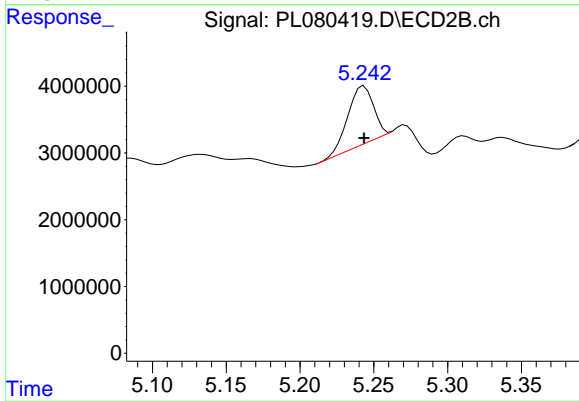
#1 Tetrachloro-m-xylene

R.T.: 2.689 min
 Delta R.T.: 0.000 min
 Response: 163799959
 Conc: 74.34 ng/ml



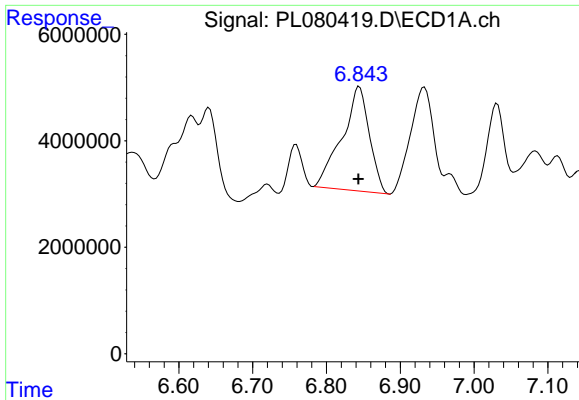
#2 Toxaphene-1

R.T.: 6.028 min
 Delta R.T.: 0.000 min
 Response: 12871029
 Conc: 776.31 ng/ml



#2 Toxaphene-1

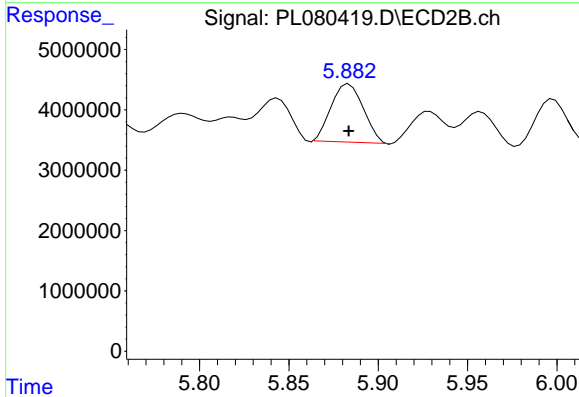
R.T.: 5.243 min
 Delta R.T.: 0.000 min
 Response: 10410383
 Conc: 752.04 ng/ml



#3 Toxaphene-2

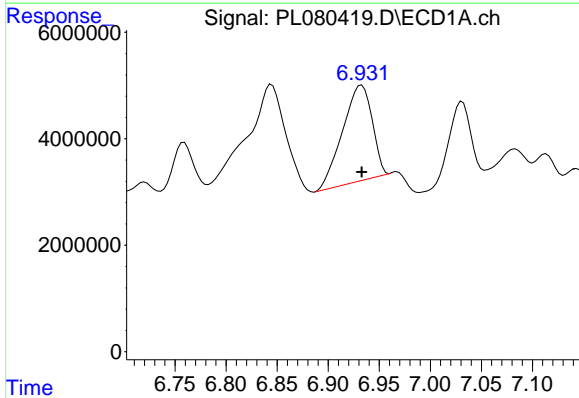
R.T.: 6.845 min
 Delta R.T.: 0.001 min
 Response: 50510947
 Conc: 749.48 ng/ml

Instrument :
 ECD_L
 ClientSampleId :
 PTOXICC750



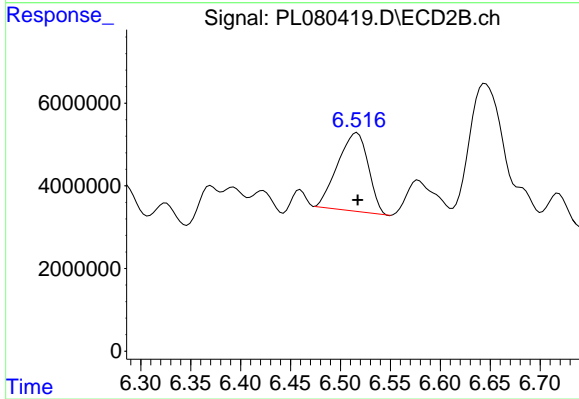
#3 Toxaphene-2

R.T.: 5.884 min
 Delta R.T.: 0.000 min
 Response: 12087699
 Conc: 735.06 ng/ml



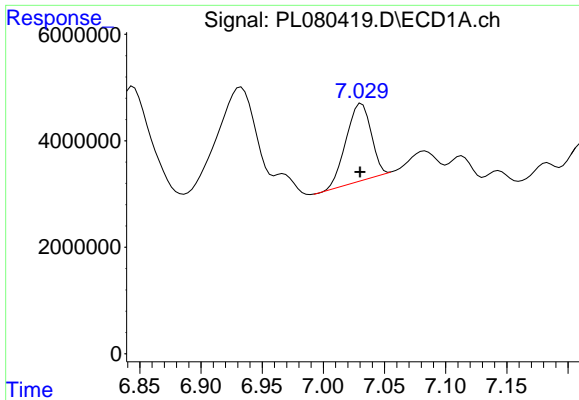
#4 Toxaphene-3

R.T.: 6.933 min
 Delta R.T.: 0.000 min
 Response: 36151056
 Conc: 745.02 ng/ml



#4 Toxaphene-3

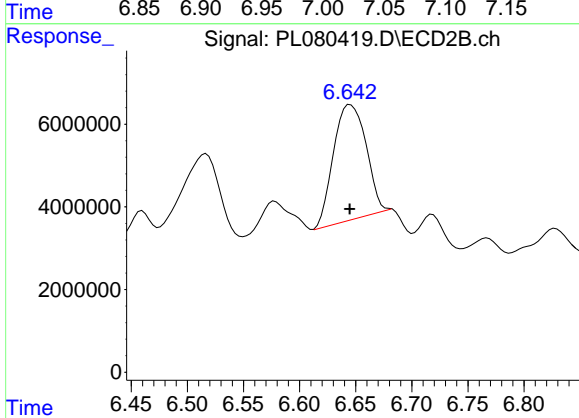
R.T.: 6.517 min
 Delta R.T.: 0.000 min
 Response: 40382207
 Conc: 751.45 ng/ml



#5 Toxaphene-4

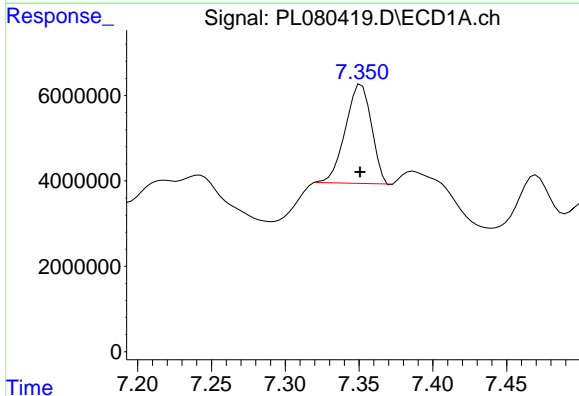
R.T.: 7.031 min
 Delta R.T.: 0.001 min
 Response: 20505338
 Conc: 762.31 ng/ml

Instrument :
 ECD_L
 ClientSampleId :
 PTOXICC750



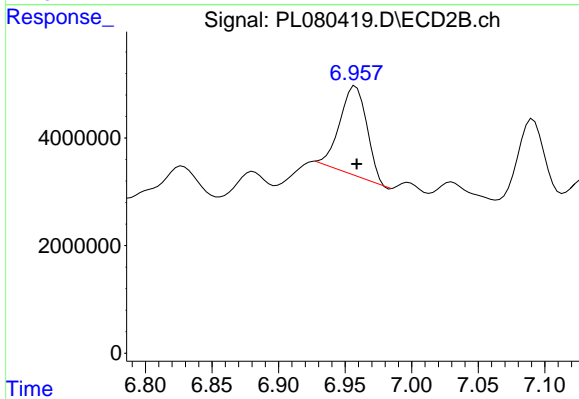
#5 Toxaphene-4

R.T.: 6.645 min
 Delta R.T.: 0.000 min
 Response: 57054761
 Conc: 777.52 ng/ml



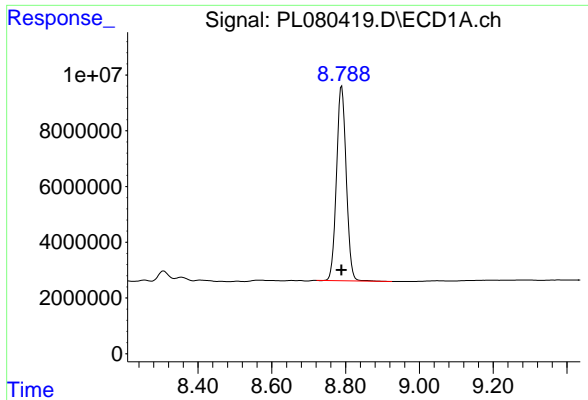
#6 Toxaphene-5

R.T.: 7.352 min
 Delta R.T.: 0.001 min
 Response: 28413230
 Conc: 756.23 ng/ml



#6 Toxaphene-5

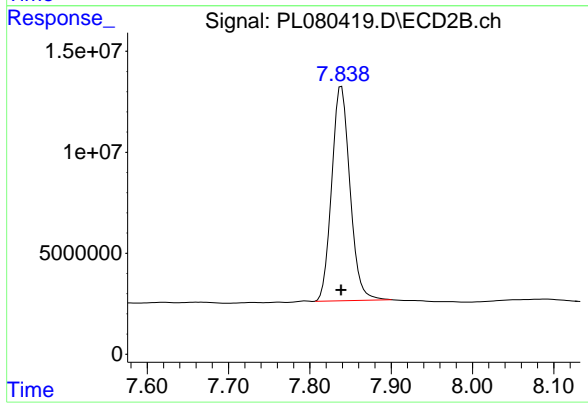
R.T.: 6.958 min
 Delta R.T.: 0.000 min
 Response: 23590619
 Conc: 756.98 ng/ml



#7 Decachlorobiphenyl

R.T.: 8.789 min
Delta R.T.: 0.000 min
Response: 128132541
Conc: 74.25 ng/ml

Instrument :
ECD_L
ClientSampleId :
PTOXICC750



#7 Decachlorobiphenyl

R.T.: 7.839 min
Delta R.T.: 0.000 min
Response: 166205223
Conc: 73.43 ng/ml