

Data Path : Z:\pestpcbsrv\HPCHEM1\ECD\_L\Data\PL012120\  
 Data File : PL055937.D  
 Signal(s) : Signal #1: ECD1A.ch Signal #2: ECD2B.ch  
 Acq On : 21 Jan 2020 13:56  
 Operator : AJ\MA  
 Sample : L1161-02  
 Misc : TOX LOQ 100 PPB  
 ALS Vial : 9 Sample Multiplier: 1

Instrument :  
 ECD\_L  
 ClientSampleId :

Integration File signal 1: autoint1.e  
 Integration File signal 2: autoint2.e  
 Quant Time: Jan 22 01:29:09 2020  
 Quant Method : Z:\pestpcbsrv\HPCHEM1\ECD\_L\methods\LTX012020.M  
 Quant Title : GC Extractables  
 QLast Update : Tue Jan 21 03:01:10 2020  
 Response via : Initial Calibration  
 Integrator: ChemStation

Volume Inj. : 2 µl  
 Signal #1 Phase : Rtx-CLPesticide 1 Signal #2 Phase: Rtx-CLPesticide 1  
 Signal #1 Info : 30M x 0.32mm x0.3 Signal #2 Info : 30M x 0.32mm x 0.25µm

Compound	RT#1	RT#2	Resp#1	Resp#2	ng/ml	ng/ml
-----						
System Monitoring Compounds						
1) SA Tetrachlo...	3.489	3.967	217.6E6	67345198	22.050	23.313
7) SA Decachlor...	8.233	8.953	247.8E6	57393004	23.670	24.697
Target Compounds						
2) Toxaphene-1	5.742	6.316	10481591	1981099	135.496	139.780
3) Toxaphene-2	5.906	7.006	3961596	2861482	59.048	116.987 #
4) Toxaphene-3	6.224	7.082	6457025	6926294	82.816	109.884 #
5) Toxaphene-4	6.344	7.168	20857539	3929511	102.593	100.000
6) Toxaphene-5	7.075	7.577	20368553	3881663	96.547	102.701
-----						

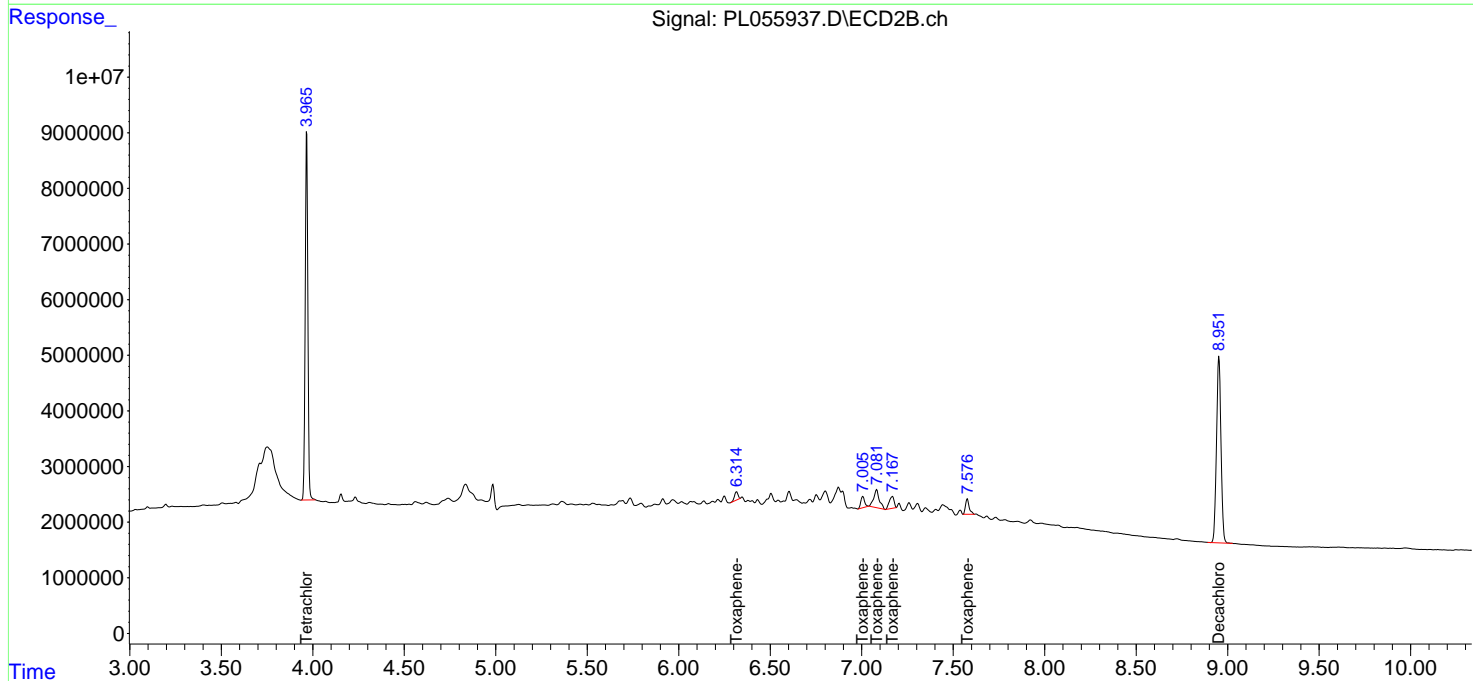
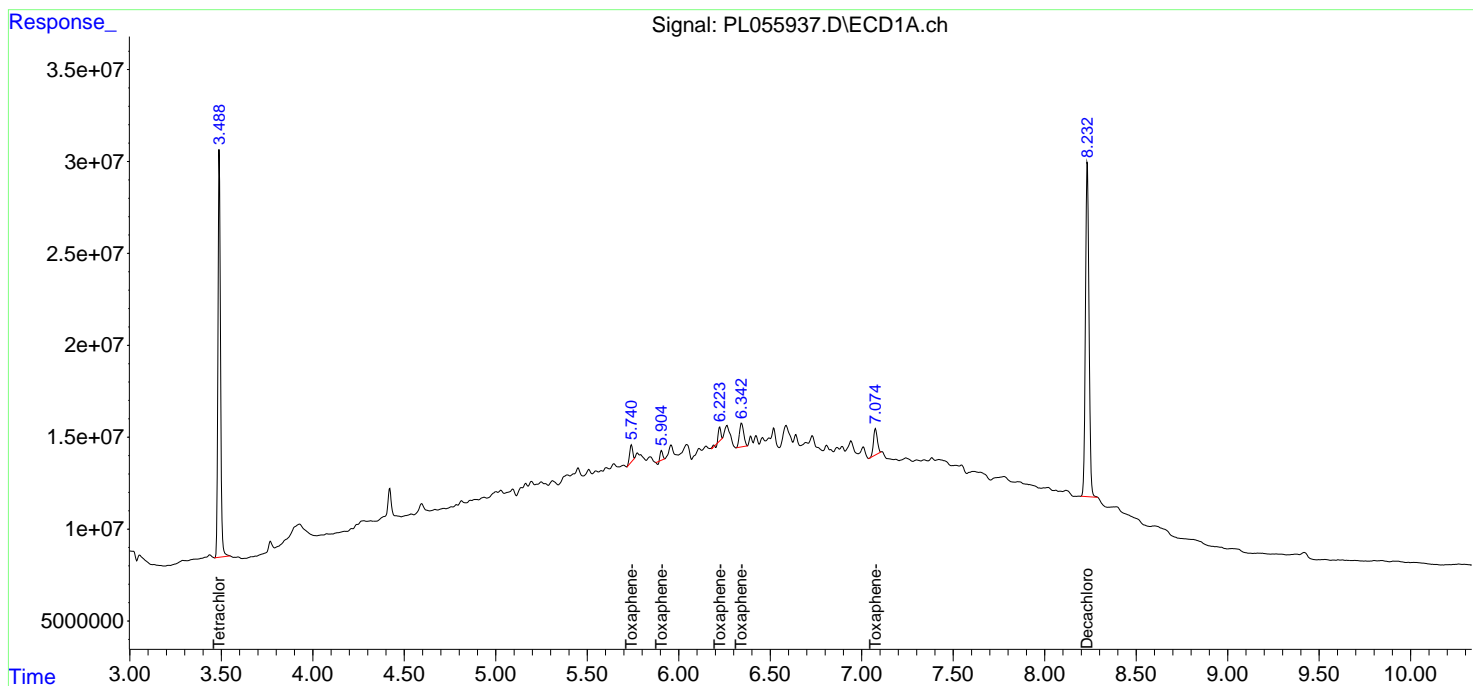
(f)=RT Delta > 1/2 Window (#)=Amounts differ by > 25% (m)=manual int.

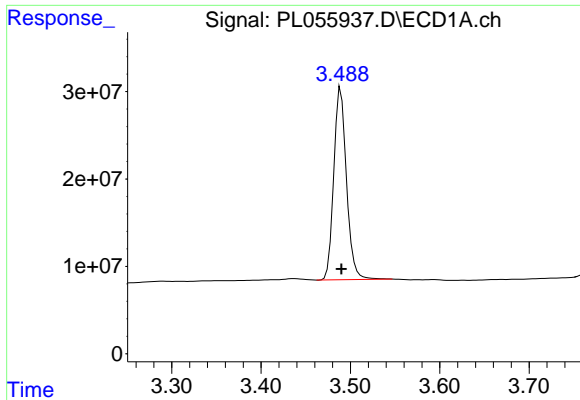
Data Path : Z:\pestpcbsrv\HPCHEM1\ECD\_L\Data\PL012120\  
 Data File : PL055937.D  
 Signal(s) : Signal #1: ECD1A.ch Signal #2: ECD2B.ch  
 Acq On : 21 Jan 2020 13:56  
 Operator : AJ\MA  
 Sample : L1161-02  
 Misc : TOX LOQ 100 PPB  
 ALS Vial : 9 Sample Multiplier: 1

Instrument :  
 ECD\_L  
 ClientSampled :

Integration File signal 1: autoint1.e  
 Integration File signal 2: autoint2.e  
 Quant Time: Jan 22 01:29:09 2020  
 Quant Method : Z:\pestpcbsrv\HPCHEM1\ECD\_L\methods\LTX012020.M  
 Quant Title : GC Extractables  
 QLast Update : Tue Jan 21 03:01:10 2020  
 Response via : Initial Calibration  
 Integrator: ChemStation

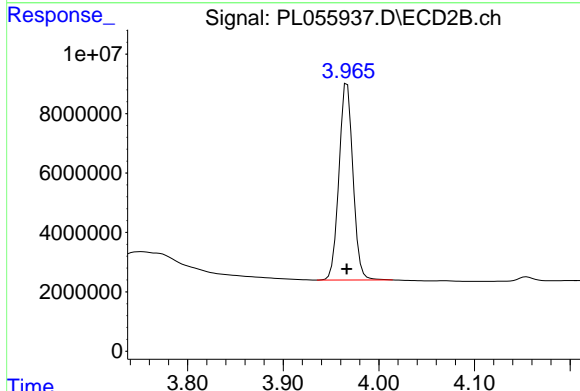
Volume Inj. : 2 µl  
 Signal #1 Phase : Rtx-CLPesticide 1 Signal #2 Phase: Rtx-CLPesticide 1  
 Signal #1 Info : 30M x 0.32mm x0.3 Signal #2 Info : 30M x 0.32mm x 0.25µm



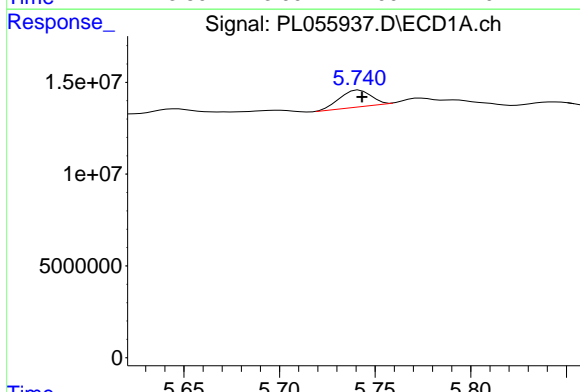


#1 Tetrachloro-m-xylene  
 R.T.: 3.489 min  
 Delta R.T.: 0.000 min  
 Response: 217633790  
 Conc: 22.05 ng/ml

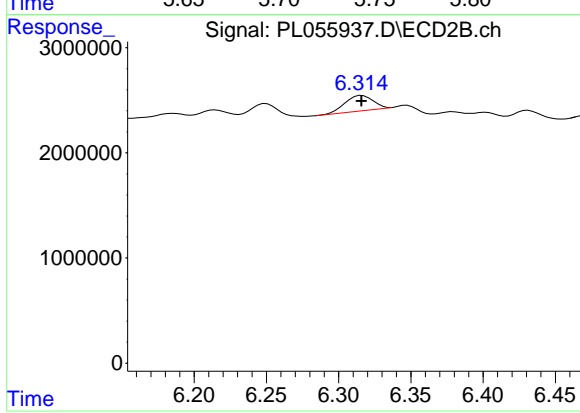
Instrument :  
 ECD\_L  
 ClientSampled :



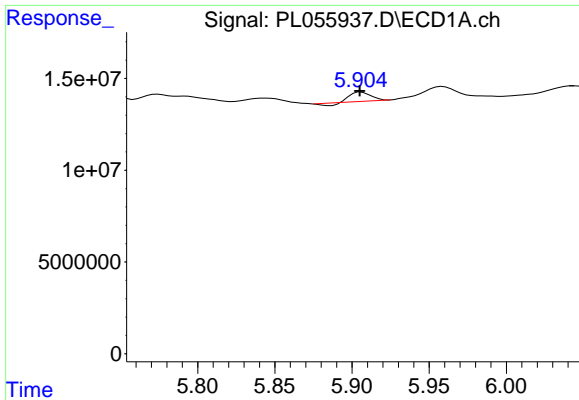
#1 Tetrachloro-m-xylene  
 R.T.: 3.967 min  
 Delta R.T.: 0.000 min  
 Response: 67345198  
 Conc: 23.31 ng/ml



#2 Toxaphene-1  
 R.T.: 5.742 min  
 Delta R.T.: -0.001 min  
 Response: 10481591  
 Conc: 135.50 ng/ml



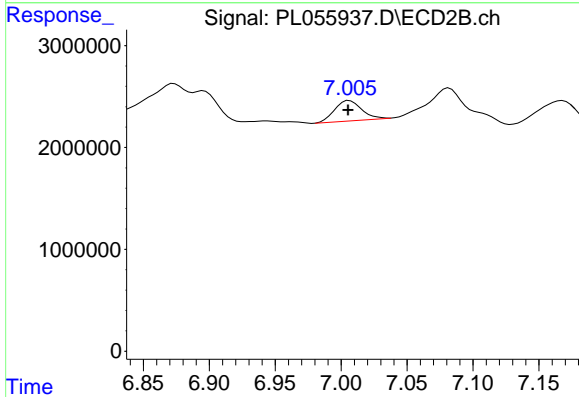
#2 Toxaphene-1  
 R.T.: 6.316 min  
 Delta R.T.: 0.000 min  
 Response: 1981099  
 Conc: 139.78 ng/ml



#3 Toxaphene-2

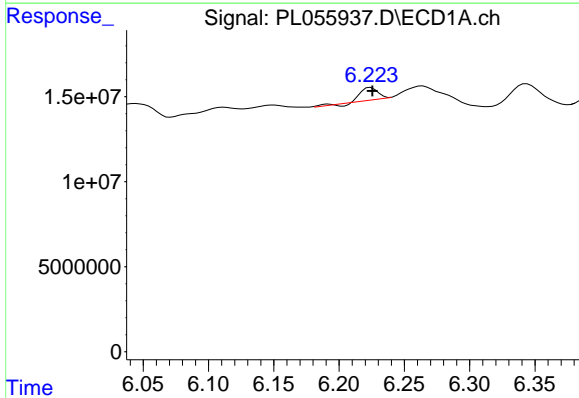
R.T.: 5.906 min  
 Delta R.T.: 0.001 min  
 Response: 3961596  
 Conc: 59.05 ng/ml

Instrument :  
 ECD\_L  
 ClientSampleId :



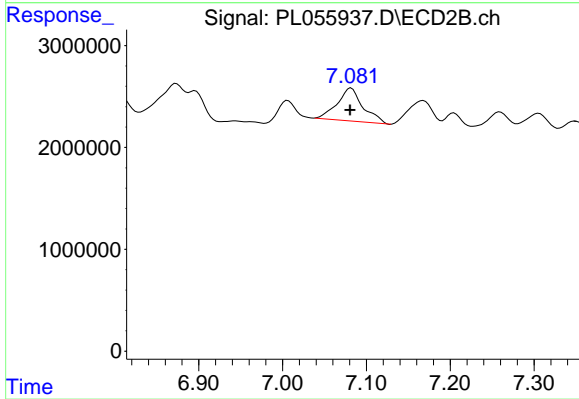
#3 Toxaphene-2

R.T.: 7.006 min  
 Delta R.T.: 0.001 min  
 Response: 2861482  
 Conc: 116.99 ng/ml



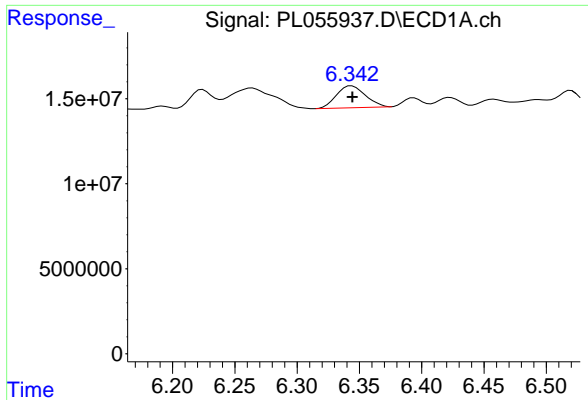
#4 Toxaphene-3

R.T.: 6.224 min  
 Delta R.T.: -0.001 min  
 Response: 6457025  
 Conc: 82.82 ng/ml



#4 Toxaphene-3

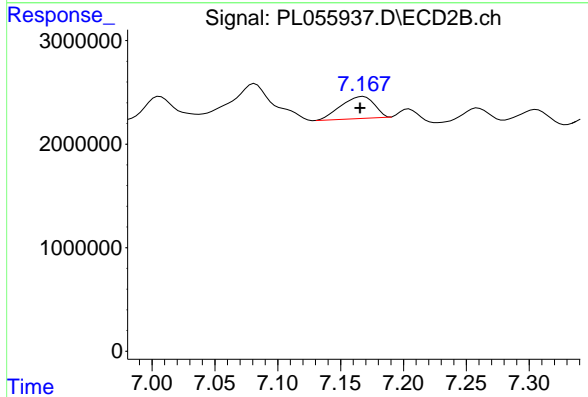
R.T.: 7.082 min  
 Delta R.T.: 0.001 min  
 Response: 6926294  
 Conc: 109.88 ng/ml



#5 Toxaphene-4

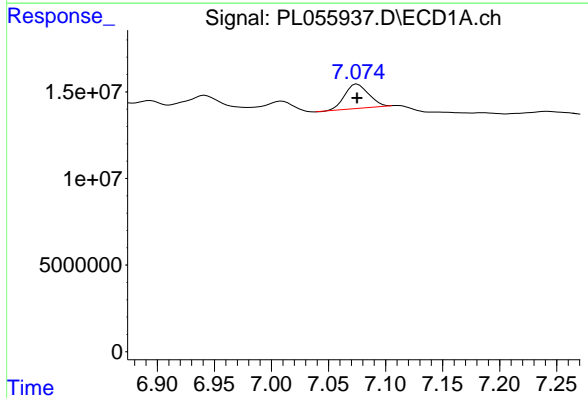
R.T.: 6.344 min  
 Delta R.T.: 0.000 min  
 Response: 20857539  
 Conc: 102.59 ng/ml

Instrument :  
 ECD\_L  
 ClientSampled :



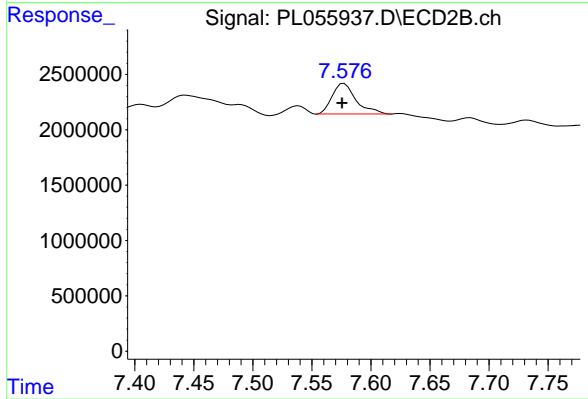
#5 Toxaphene-4

R.T.: 7.168 min  
 Delta R.T.: 0.003 min  
 Response: 3929511  
 Conc: 100.00 ng/ml



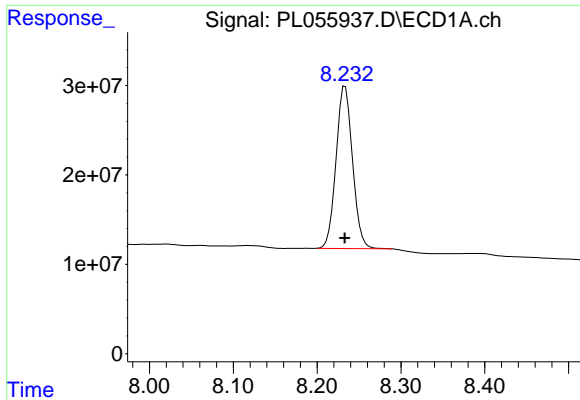
#6 Toxaphene-5

R.T.: 7.075 min  
 Delta R.T.: 0.000 min  
 Response: 20368553  
 Conc: 96.55 ng/ml



#6 Toxaphene-5

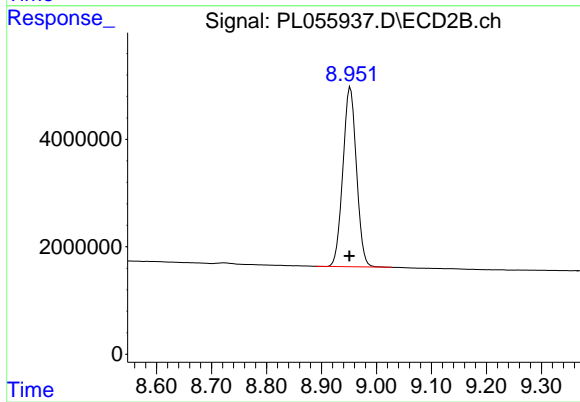
R.T.: 7.577 min  
 Delta R.T.: 0.002 min  
 Response: 3881663  
 Conc: 102.70 ng/ml



#7 Decachlorobiphenyl

R.T.: 8.233 min  
Delta R.T.: 0.000 min  
Response: 247815279  
Conc: 23.67 ng/ml

Instrument :  
ECD\_L  
ClientSampleId :



#7 Decachlorobiphenyl

R.T.: 8.953 min  
Delta R.T.: 0.002 min  
Response: 57393004  
Conc: 24.70 ng/ml