

Data Path : Z:\pestpcbsrv\HPCHEM1\ECD\_L\Data\PL012121\  
 Data File : PL064267.D  
 Signal(s) : Signal #1: ECD1A.ch Signal #2: ECD2B.ch  
 Acq On : 20 Jan 2021 19:01  
 Operator : AR\AJ  
 Sample : INDA101  
 Misc :  
 ALS Vial : 9 Sample Multiplier: 1

Instrument :  
 ECD\_L  
 ClientSampleId :  
 INDA101

Integration File signal 1: autoint1.e  
 Integration File signal 2: autoint2.e  
 Quant Time: Jan 21 03:19:51 2021  
 Quant Method : Z:\pestpcbsrv\HPCHEM1\ECD\_L\methods\PL012121CLP.M  
 Quant Title : GC Extractables  
 QLast Update : Thu Jan 21 03:09:57 2021  
 Response via : Initial Calibration  
 Integrator: ChemStation

Volume Inj. : 1 µl  
 Signal #1 Phase : ZB-MR2 Signal #2 Phase: ZB-MR1  
 Signal #1 Info : 30M x 0.32mm x0.2 Signal #2 Info : 30M x 0.32mm x 0.50µm

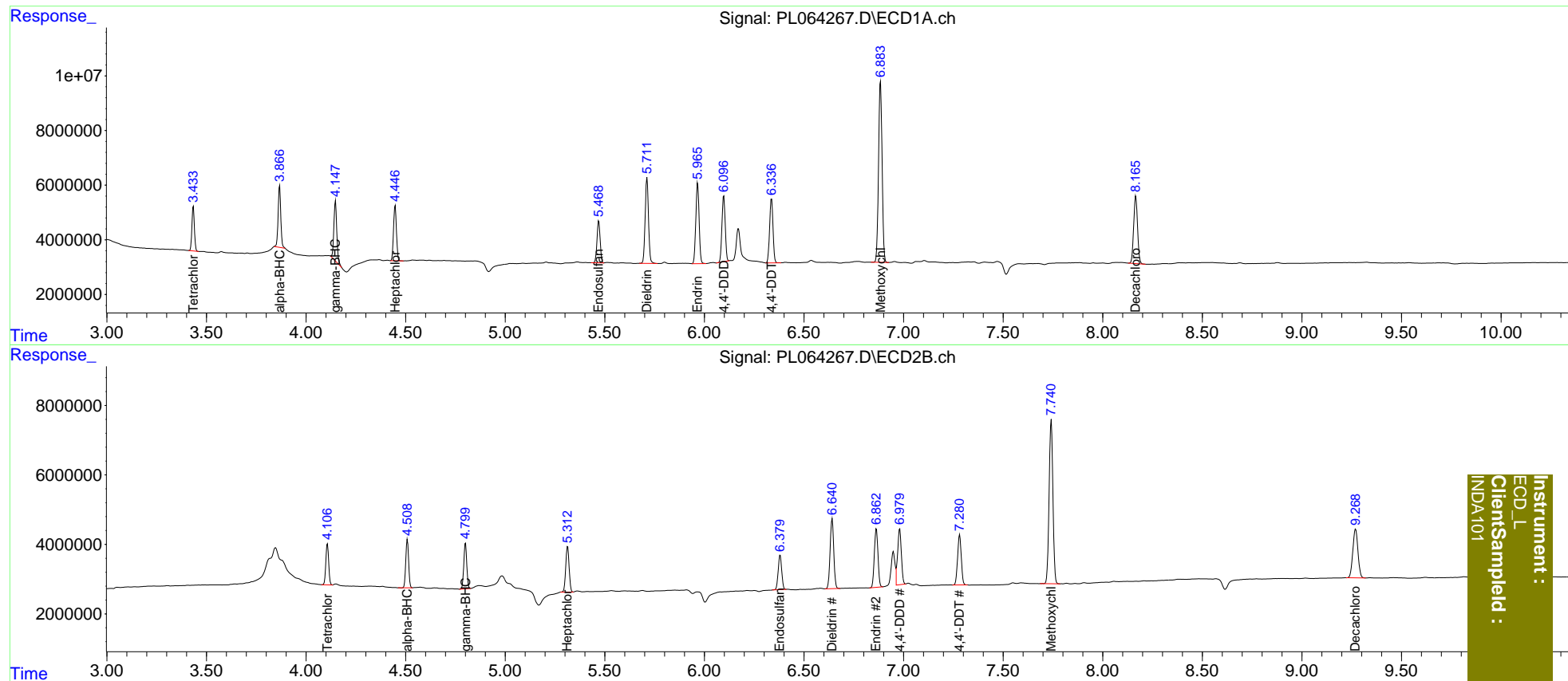
Compound	RT#1	RT#2	Resp#1	Resp#2	ng/ml	ng/ml
-----						
System Monitoring Compounds						
1) SA Tetrachlo...	3.434	4.108	14339066	11760695	4.870	4.843
27) SA Decachlor...	8.166	9.270	33108613	25022270	10.917	10.633
Target Compounds						
2) A alpha-BHC	3.868	4.509	21151337	13749238	4.726	4.334
3) MA gamma-BHC...	4.148	4.801	21917411	13751096	5.126	4.505
4) MA Heptachlor	4.448	5.314	20395189	15455826	4.767	4.733
9) A Endosulfan I	5.470	6.380	16933851	12313297	4.865	4.715
13) MA Dieldrin	5.712	6.641	36594306	25593844	9.435	9.133
14) MA Endrin	5.966	6.864	33648027	21278277	9.668	9.151
16) A 4,4'-DDD	6.097	6.981	27212246	21266718	9.137	9.565
17) MA 4,4'-DDT	6.337	7.282	27688220	18674745	9.084	8.591
20) A Methoxychlor	6.884	7.742	82932381	62929718	50.781	48.853
-----						

(f)=RT Delta > 1/2 Window (#)=Amounts differ by > 25% (m)=manual int.

Data Path : Z:\pestpcbsrv\HPCHEM1\ECD\_L\Data\PL012121\  
 Data File : PL064267.D  
 Signal(s) : Signal #1: ECD1A.ch Signal #2: ECD2B.ch  
 Acq On : 20 Jan 2021 19:01  
 Operator : AR\AJ  
 Sample : INDA101  
 Misc :  
 ALS Vial : 9 Sample Multiplier: 1

Integration File signal 1: autoint1.e  
 Integration File signal 2: autoint2.e  
 Quant Time: Jan 21 03:19:51 2021  
 Quant Method : Z:\pestpcbsrv\HPCHEM1\ECD\_L\methods\PL012121CLP.M  
 Quant Title : GC Extractables  
 QLast Update : Thu Jan 21 03:09:57 2021  
 Response via : Initial Calibration  
 Integrator: ChemStation

Volume Inj. : 1 µl  
 Signal #1 Phase : ZB-MR2 Signal #2 Phase: ZB-MR1  
 Signal #1 Info : 30M x 0.32mm x0.2 Signal #2 Info : 30M x 0.32mm x 0.50µm



Instrument :  
 ECD\_L  
 ClientSampleId :  
 INDA101