

Data Path : Z:\pestpcbsrv\HPCHEM1\ECD_L\Data\PL012122\
 Data File : PL072174.D
 Signal(s) : Signal #1: ECD1A.ch Signal #2: ECD2B.ch
 Acq On : 21 Jan 2022 17:23
 Operator : AR\AJ
 Sample : I.BLK
 Misc :
 ALS Vial : 2 Sample Multiplier: 1

Instrument :
 ECD_L
ClientSampleId :
 I.BLK

Manual Integrations
APPROVED
 Reviewed By :Abdul Mirza 01/24/2022
 Supervised By :Ankita Jodhani 01/25/2022

Integration File signal 1: autoint1.e
 Integration File signal 2: autoint2.e
 Quant Time: Jan 22 02:02:22 2022
 Quant Method : Z:\pestpcbsrv\HPCHEM1\ECD_L\methods\PL011722.M
 Quant Title : GC Extractables
 QLast Update : Tue Jan 18 10:53:59 2022
 Response via : Initial Calibration
 Integrator: ChemStation

Volume Inj. : 1 µl
 Signal #1 Phase : ZB-MR2 Signal #2 Phase: ZB-MR1
 Signal #1 Info : 30M x 0.32mm x0.2 Signal #2 Info : 30M x 0.32mm x0.5µm

Compound	RT#1	RT#2	Resp#1	Resp#2	ng/ml	ng/ml

System Monitoring Compounds						
1) SA Tetrachlo...	4.557	5.491	9750555	28897719	17.563	17.793
28) SA Decachlor...	10.316	11.383	15741147	28607887	17.718m	17.730

Target Compounds

(f)=RT Delta > 1/2 Window (#)=Amounts differ by > 25% (m)=manual int.

Data Path : Z:\pestpcbsrv\HPCHEM1\ECD_L\Data\PL012122\
 Data File : PL072174.D
 Signal(s) : Signal #1: ECD1A.ch Signal #2: ECD2B.ch
 Acq On : 21 Jan 2022 17:23
 Operator : AR\AJ
 Sample : I.BLK
 Misc :
 ALS Vial : 2 Sample Multiplier: 1

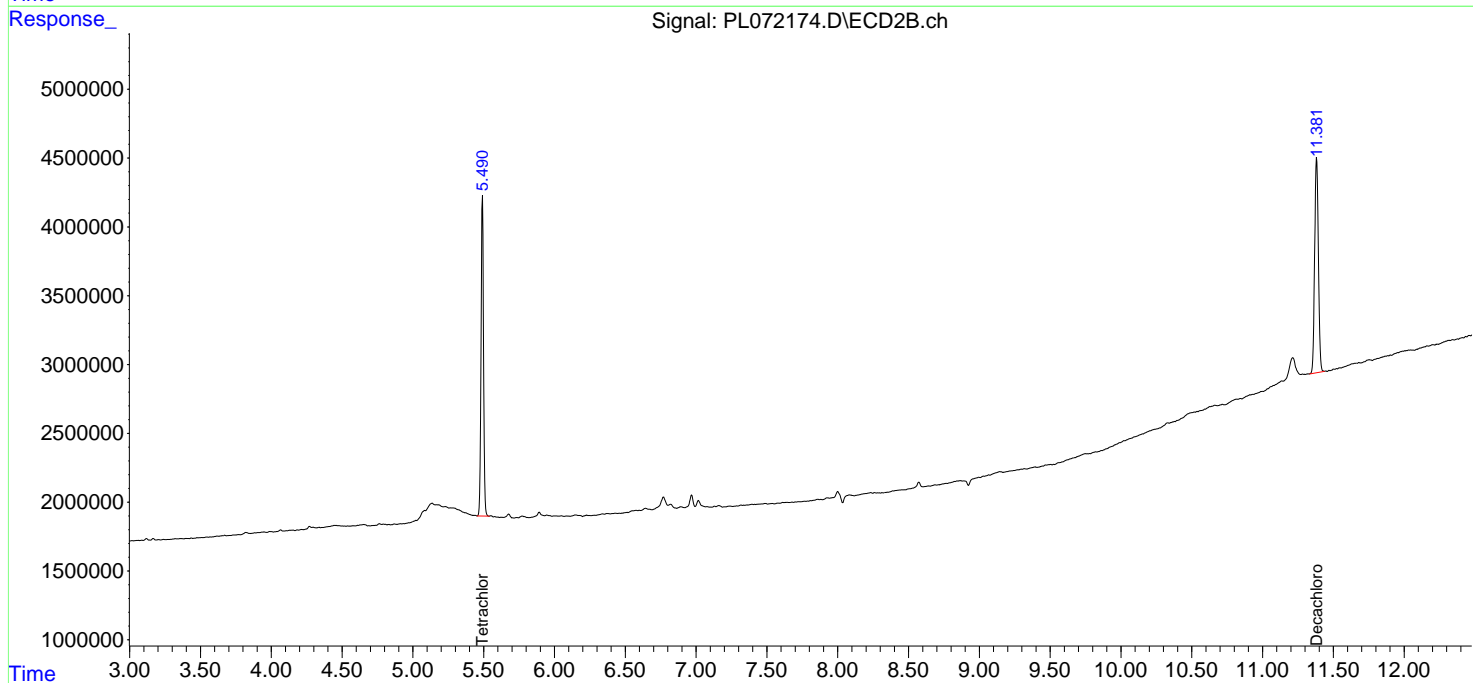
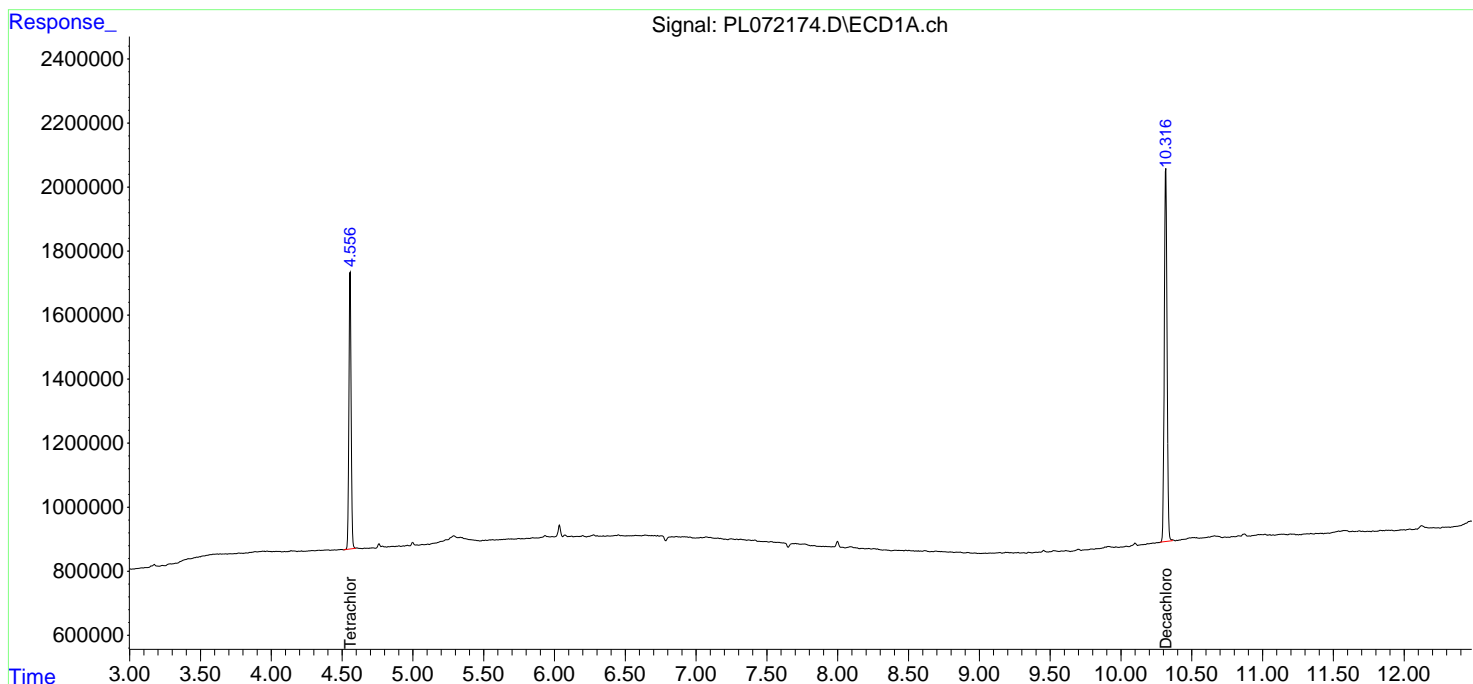
Instrument :
 ECD_L
ClientSampleId :
 I.BLK

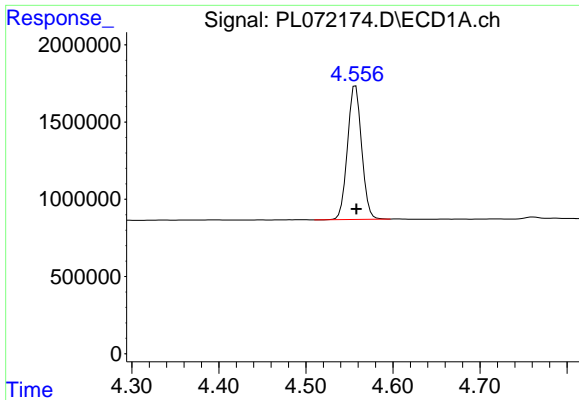
Manual Integrations
APPROVED

Reviewed By :Abdul Mirza 01/24/2022
 Supervised By :Ankita Jodhani 01/25/2022

Integration File signal 1: autoint1.e
 Integration File signal 2: autoint2.e
 Quant Time: Jan 22 02:02:22 2022
 Quant Method : Z:\pestpcbsrv\HPCHEM1\ECD_L\methods\PL011722.M
 Quant Title : GC Extractables
 QLast Update : Tue Jan 18 10:53:59 2022
 Response via : Initial Calibration
 Integrator: ChemStation

Volume Inj. : 1 µl
 Signal #1 Phase : ZB-MR2 Signal #2 Phase: ZB-MR1
 Signal #1 Info : 30M x 0.32mm x0.2 Signal #2 Info : 30M x 0.32mm x0.5µm





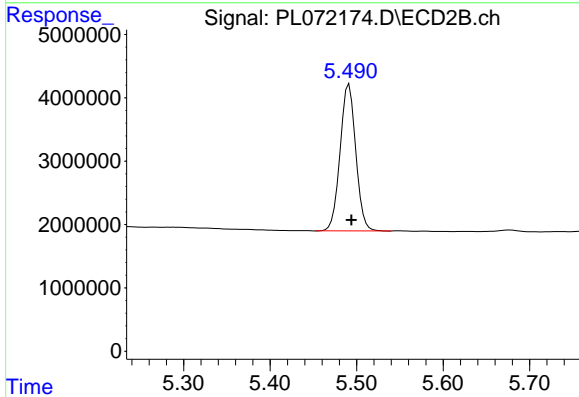
#1 Tetrachloro-m-xylene

R.T.: 4.557 min
 Delta R.T.: 0.000 min
 Response: 9750555
 Conc: 17.56 ng/ml

Instrument :
 ECD_L
 ClientSampleId :
 I.BLK

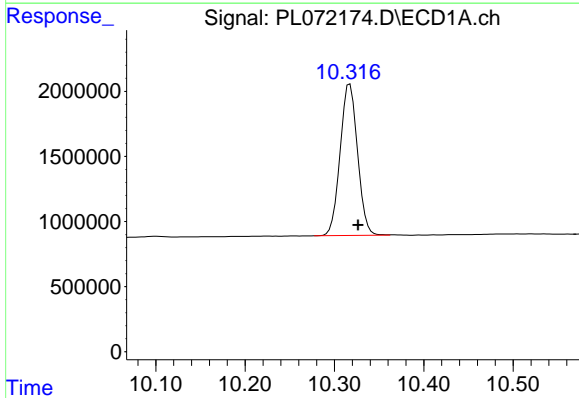
Manual Integrations
 APPROVED

Reviewed By :Abdul Mirza 01/24/2022
 Supervised By :Ankita Jodhani 01/25/2022



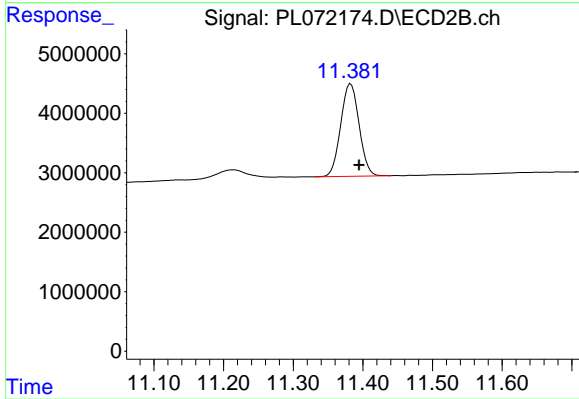
#1 Tetrachloro-m-xylene

R.T.: 5.491 min
 Delta R.T.: -0.003 min
 Response: 28897719
 Conc: 17.79 ng/ml



#28 Decachlorobiphenyl

R.T.: 10.316 min
 Delta R.T.: -0.011 min
 Response: 15741147
 Conc: 17.72 ng/ml m



#28 Decachlorobiphenyl

R.T.: 11.383 min
 Delta R.T.: -0.012 min
 Response: 28607887
 Conc: 17.73 ng/ml