

Data Path : Z:\pestpcbsrv\HPCHEM1\ECD_L\Data\PL012219\
 Data File : PL044135.D
 Signal(s) : Signal #1: ECD1A.ch Signal #2: ECD2B.ch
 Acq On : 22 Jan 2019 17:25
 Operator : AJ\SJ
 Sample : K1009-03
 Misc :
 ALS Vial : 15 Sample Multiplier: 1

Instrument :
 ECD_L
 ClientSampleId :
 CL-01-011819-B

Integration File signal 1: autoint1.e
 Integration File signal 2: autoint2.e
 Quant Time: Jan 23 02:22:23 2019
 Quant Method : Z:\pestpcbsrv\HPCHEM1\ECD_L\methods\PL012219.M
 Quant Title : GC Extractables
 QLast Update : Wed Jan 23 00:42:56 2019
 Response via : Initial Calibration
 Integrator: ChemStation

Volume Inj. : 2 µl
 Signal #1 Phase : ZB-MR1 Signal #2 Phase: ZB-MR2
 Signal #1 Info : 30M x 0.32mm x0.5 Signal #2 Info : 30M x 0.32mm x0.25µm

Compound	RT#1	RT#2	Resp#1	Resp#2	ng/ml	ng/ml

System Monitoring Compounds						
1) SA Tetrachlo...	3.365	3.984	65584407	23685147	10.822	10.858
28) SA Decachlor...	8.049	9.040	83500283	29032280	12.040	13.087
Target Compounds						
9) A Endosulfan I	0.000	6.164f	0	7700418	N.D.	3.326 #
11) B alpha-Chl...	0.000	6.164	0	7700418	N.D.	3.061 #
12) B 4,4'-DDE	5.486	6.319	22776461	9330152	3.363	4.347 #
17) MA 4,4'-DDT	6.232	7.107	25456605	9928420	4.993	6.050
26) Chlordane-4	0.000	6.164	0	7700418	N.D.	18.342 #

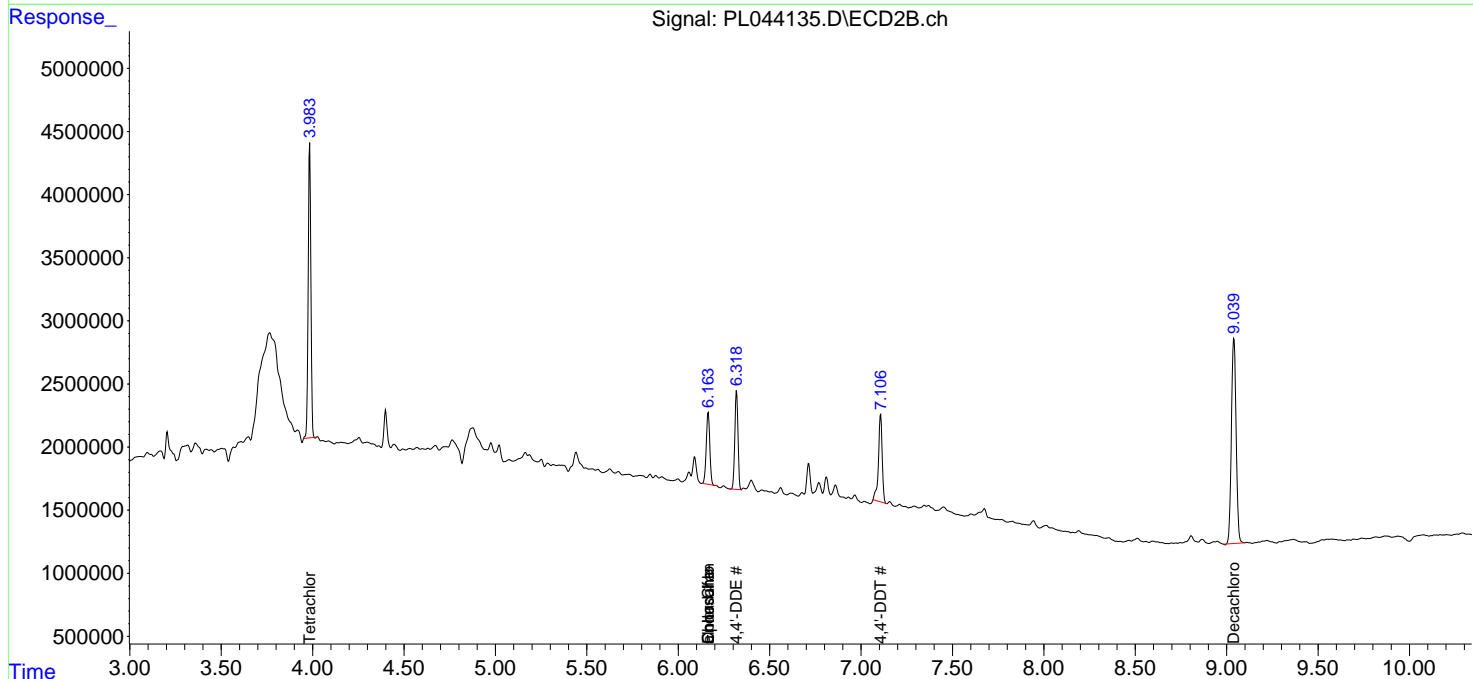
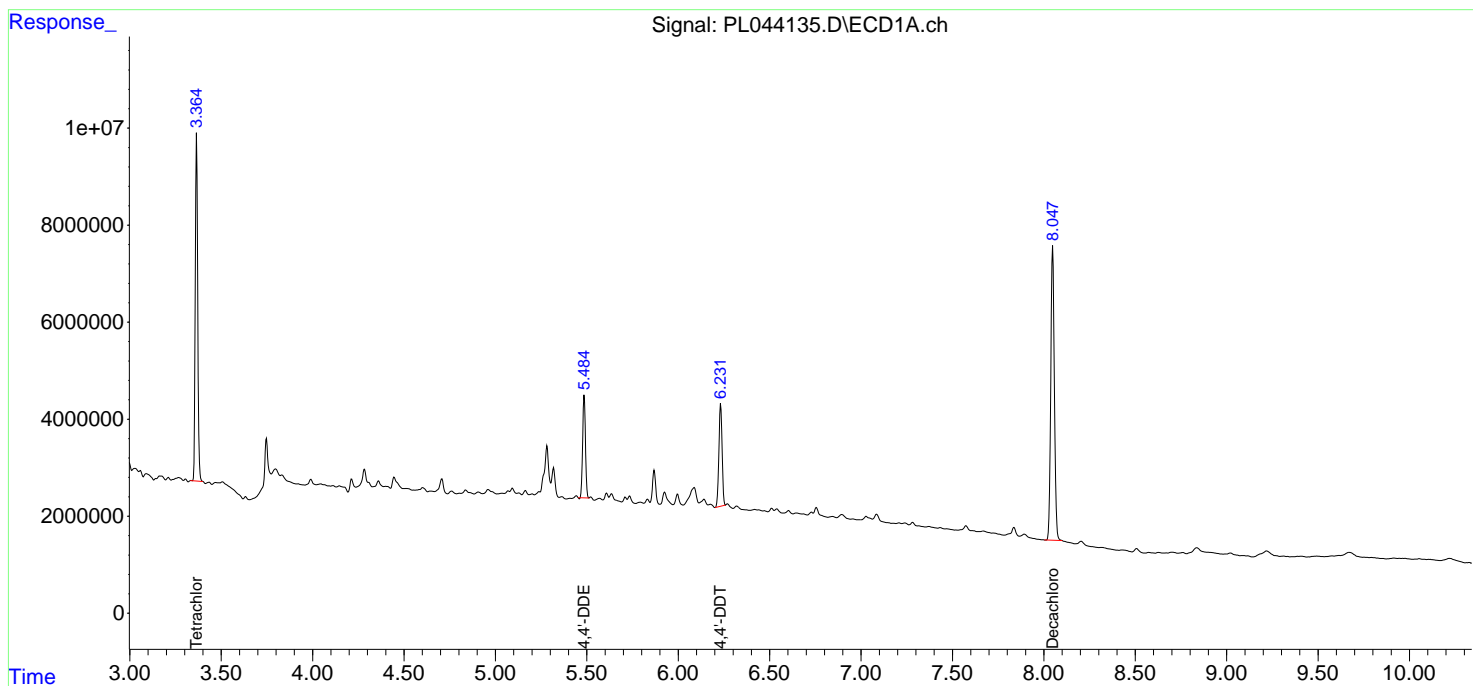
(f)=RT Delta > 1/2 Window (#)=Amounts differ by > 25% (m)=manual int.

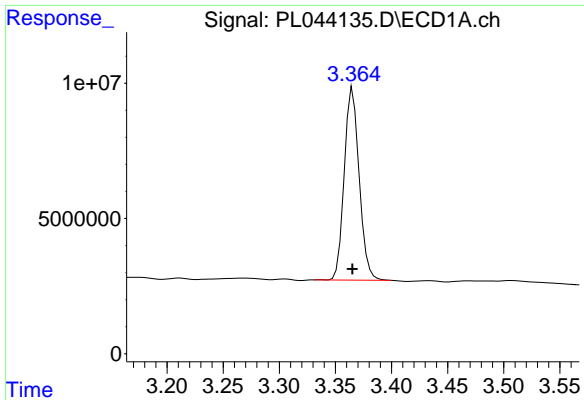
Data Path : Z:\pestpcbsrv\HPCHEM1\ECD_L\Data\PL012219\
 Data File : PL044135.D
 Signal(s) : Signal #1: ECD1A.ch Signal #2: ECD2B.ch
 Acq On : 22 Jan 2019 17:25
 Operator : AJ\SJ
 Sample : K1009-03
 Misc :
 ALS Vial : 15 Sample Multiplier: 1

Instrument :
 ECD_L
 ClientSampleId :
 CL-01-011819-B

Integration File signal 1: autoint1.e
 Integration File signal 2: autoint2.e
 Quant Time: Jan 23 02:22:23 2019
 Quant Method : Z:\pestpcbsrv\HPCHEM1\ECD_L\methods\PL012219.M
 Quant Title : GC Extractables
 QLast Update : Wed Jan 23 00:42:56 2019
 Response via : Initial Calibration
 Integrator: ChemStation

Volume Inj. : 2 µl
 Signal #1 Phase : ZB-MR1 Signal #2 Phase: ZB-MR2
 Signal #1 Info : 30M x 0.32mm x0.5 Signal #2 Info : 30M x 0.32mm x0.25µm

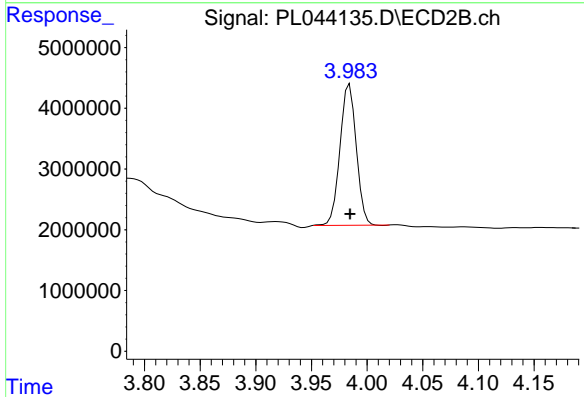




#1 Tetrachloro-m-xylene

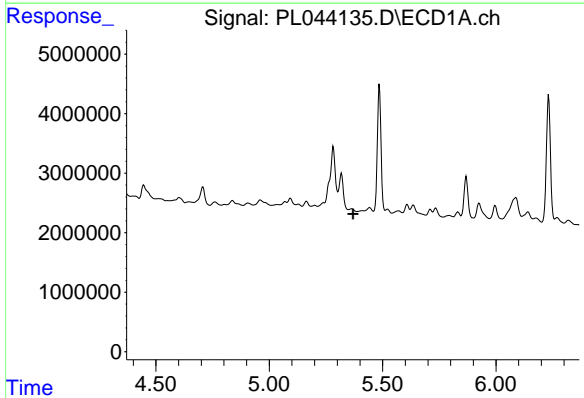
R.T.: 3.365 min
 Delta R.T.: 0.000 min
 Response: 65584407
 Conc: 10.82 ng/ml

Instrument :
 ECD_L
 ClientSampleId :
 CL-01-011819-B



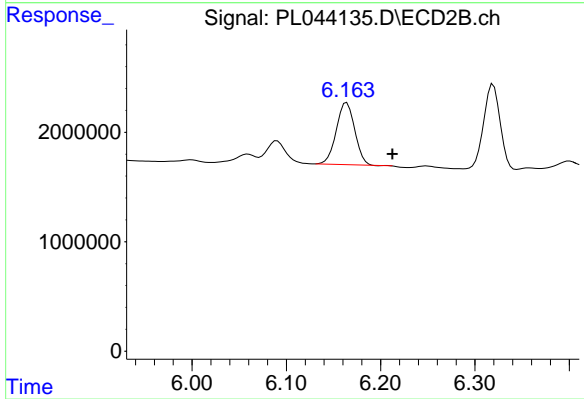
#1 Tetrachloro-m-xylene

R.T.: 3.984 min
 Delta R.T.: 0.000 min
 Response: 23685147
 Conc: 10.86 ng/ml



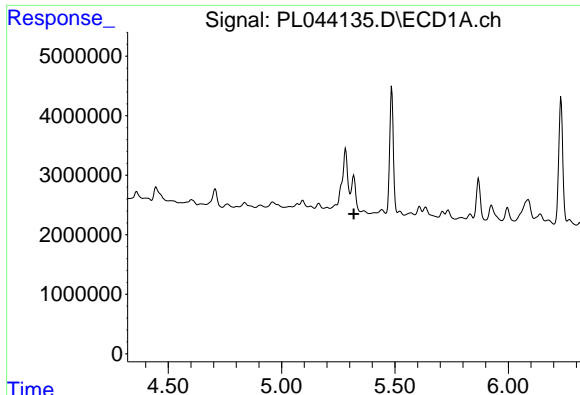
#9 Endosulfan I

R.T.: 0.000 min
 Exp R.T. : 5.371 min
 Response: 0
 Conc: N.D.



#9 Endosulfan I

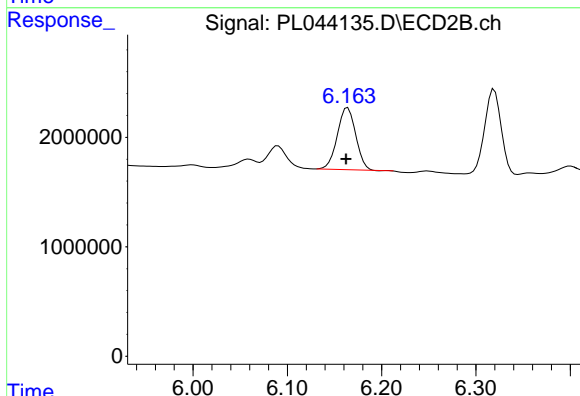
R.T.: 6.164 min
 Delta R.T.: -0.048 min
 Response: 7700418
 Conc: 3.33 ng/ml



#11 alpha-Chlordane

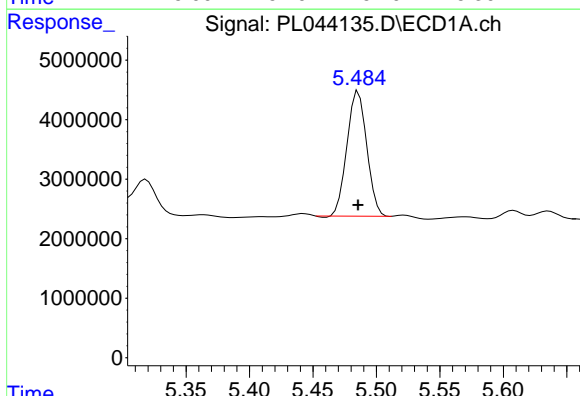
R.T.: 0.000 min
 Exp R.T.: 5.318 min
 Response: 0
 Conc: N.D.

Instrument :
 ECD_L
 ClientSampleId :
 CL-01-011819-B



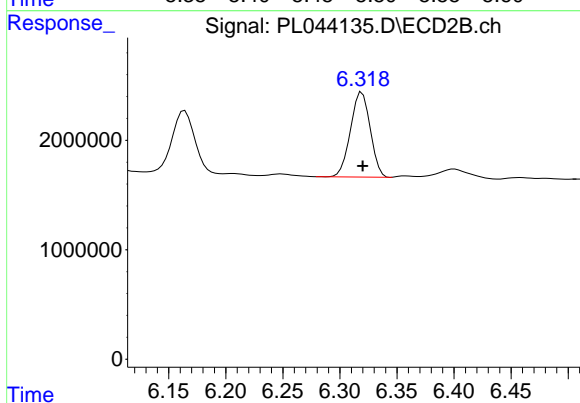
#11 alpha-Chlordane

R.T.: 6.164 min
 Delta R.T.: 0.002 min
 Response: 7700418
 Conc: 3.06 ng/ml



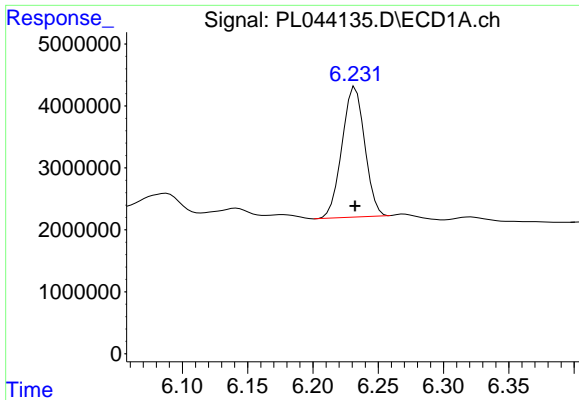
#12 4,4'-DDE

R.T.: 5.486 min
 Delta R.T.: 0.000 min
 Response: 22776461
 Conc: 3.36 ng/ml



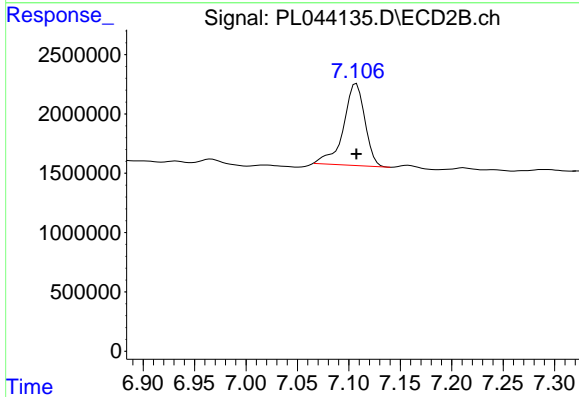
#12 4,4'-DDE

R.T.: 6.319 min
 Delta R.T.: 0.000 min
 Response: 9330152
 Conc: 4.35 ng/ml

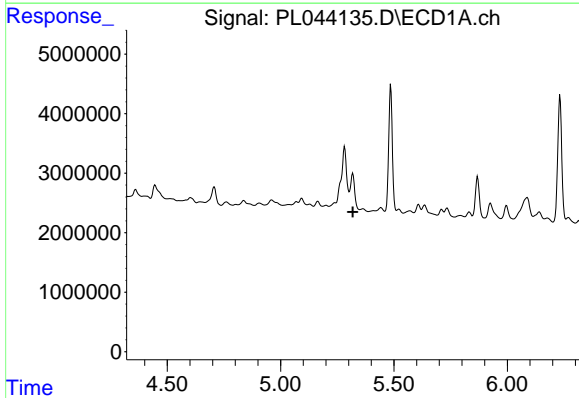


#17 4,4'-DDT
 R.T.: 6.232 min
 Delta R.T.: 0.000 min
 Response: 25456605
 Conc: 4.99 ng/ml

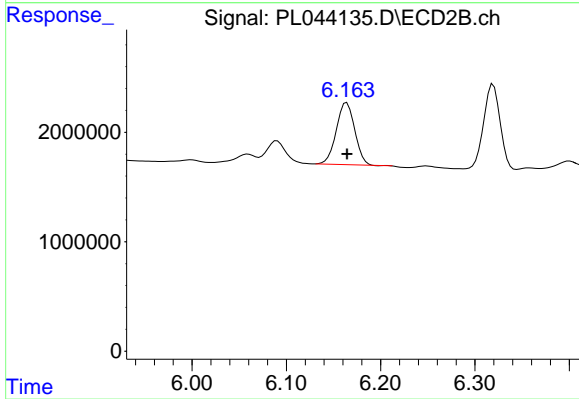
Instrument :
 ECD_L
ClientSampled :
 CL-01-011819-B



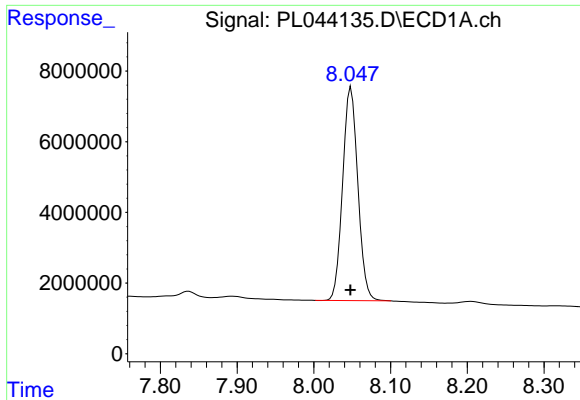
#17 4,4'-DDT
 R.T.: 7.107 min
 Delta R.T.: 0.000 min
 Response: 9928420
 Conc: 6.05 ng/ml



#26 Chlordane-4
 R.T.: 0.000 min
 Exp R.T. : 5.319 min
 Response: 0
 Conc: N.D.



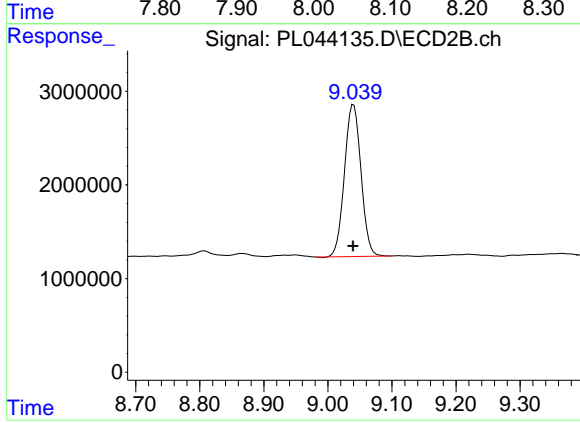
#26 Chlordane-4
 R.T.: 6.164 min
 Delta R.T.: 0.000 min
 Response: 7700418
 Conc: 18.34 ng/ml



#28 Decachlorobiphenyl

R.T.: 8.049 min
Delta R.T.: 0.000 min
Response: 83500283
Conc: 12.04 ng/ml

Instrument :
ECD_L
ClientSampleId :
CL-01-011819-B



#28 Decachlorobiphenyl

R.T.: 9.040 min
Delta R.T.: 0.000 min
Response: 29032280
Conc: 13.09 ng/ml