

Data Path : Z:\pestpcbsrv\HPCHEM1\ECD_L\Data\PL012221\
 Data File : PL064293.D
 Signal(s) : Signal #1: ECD1A.ch Signal #2: ECD2B.ch
 Acq On : 21 Jan 2021 10:17
 Operator : AR\AJ
 Sample : PB133934BL
 Misc :
 ALS Vial : 8 Sample Multiplier: 1

Instrument :
 ECD_L
 ClientSampleId :
 PBLK34

Integration File signal 1: autoint1.e
 Integration File signal 2: autoint2.e
 Quant Time: Jan 22 01:59:35 2021
 Quant Method : Z:\pestpcbsrv\HPCHEM1\ECD_L\methods\PL012121CLP.M
 Quant Title : GC Extractables
 QLast Update : Thu Jan 21 03:31:19 2021
 Response via : Initial Calibration
 Integrator: ChemStation

Volume Inj. : 1 µl
 Signal #1 Phase : ZB-MR2 Signal #2 Phase: ZB-MR1
 Signal #1 Info : 30M x 0.32mm x0.2 Signal #2 Info : 30M x 0.32mm x 0.50µm

Compound	RT#1	RT#2	Resp#1	Resp#2	ng/ml	ng/ml

System Monitoring Compounds						
1) SA Tetrachlo...	3.439	4.109	61305892	49653203	21.083	20.584
27) SA Decachlor...	8.173	9.275	120.5E6	93835664	40.033	40.430

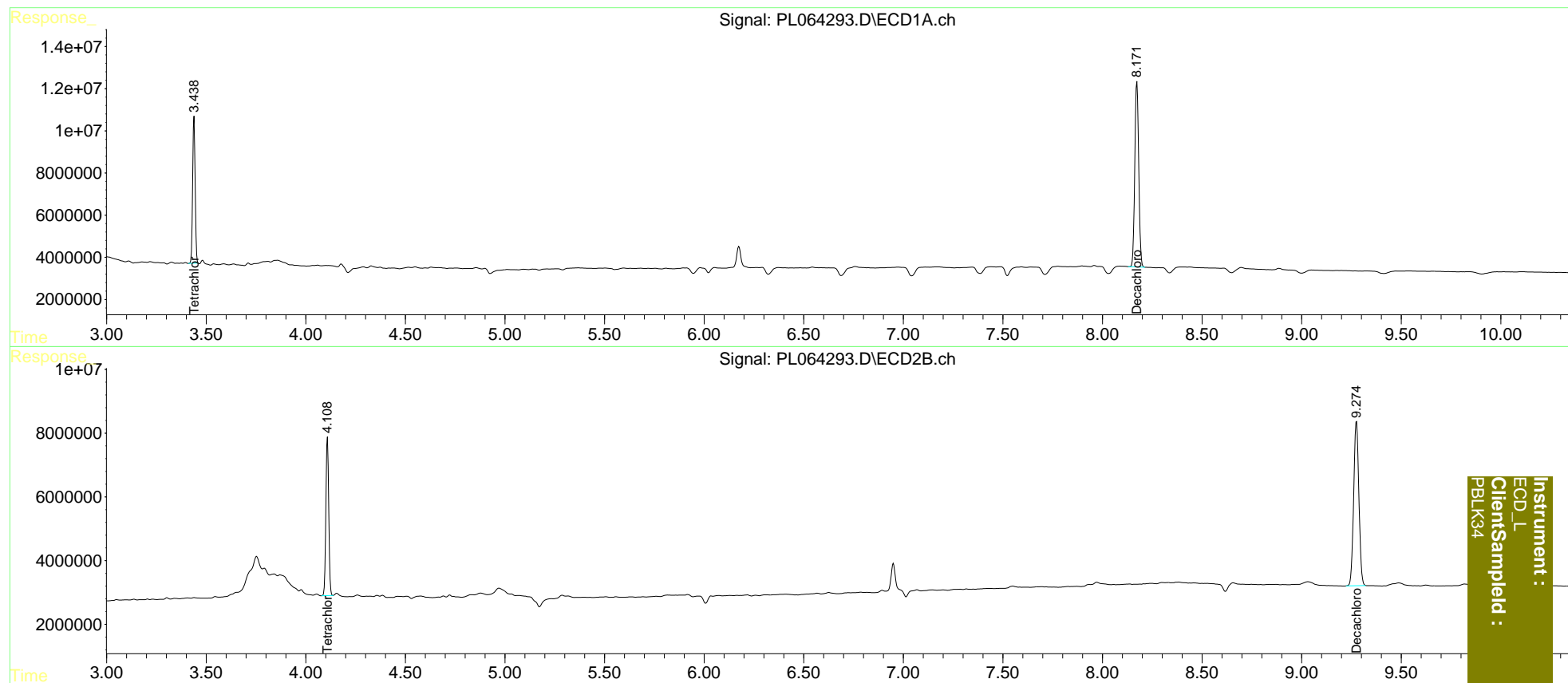
Target Compounds

(f)=RT Delta > 1/2 Window (#)=Amounts differ by > 25% (m)=manual int.

Data Path : Z:\pestpcbsrv\HPCHEM1\ECD_L\Data\PL012221\
 Data File : PL064293.D
 Signal(s) : Signal #1: ECD1A.ch Signal #2: ECD2B.ch
 Acq On : 21 Jan 2021 10:17
 Operator : AR\AJ
 Sample : PB133934BL
 Misc :
 ALS Vial : 8 Sample Multiplier: 1

Integration File signal 1: autoint1.e
 Integration File signal 2: autoint2.e
 Quant Time: Jan 22 01:59:35 2021
 Quant Method : Z:\pestpcbsrv\HPCHEM1\ECD_L\methods\PL012121CLP.M
 Quant Title : GC Extractables
 QLast Update : Thu Jan 21 03:31:19 2021
 Response via : Initial Calibration
 Integrator: ChemStation

Volume Inj. : 1 µl
 Signal #1 Phase : ZB-MR2 Signal #2 Phase: ZB-MR1
 Signal #1 Info : 30M x 0.32mm x0.2 Signal #2 Info : 30M x 0.32mm x 0.50µm



Instrument :
 ECD_L
 ClientSampleId :
 PBLK34