

Data Path : Z:\pestpcbsrv\HPCHEM1\ECD\_L\Data\PL012221\  
 Data File : PL064294.D  
 Signal(s) : Signal #1: ECD1A.ch Signal #2: ECD2B.ch  
 Acq On : 21 Jan 2021 10:31  
 Operator : AR\AJ  
 Sample : L5214-04  
 Misc : PEST MDL 1 PPB  
 ALS Vial : 9 Sample Multiplier: 1

**Instrument :**  
 ECD\_L  
**ClientSampleId :**  
 MDL-SOIL-QT1-2021-02

**Manual Integrations**  
**APPROVED**  
 Ankita  
 1/22/2021 9:58:02 AM

Integration File signal 1: autoint1.e  
 Integration File signal 2: autoint2.e  
 Quant Time: Jan 22 01:59:51 2021  
 Quant Method : Z:\pestpcbsrv\HPCHEM1\ECD\_L\methods\PL012121CLP.M  
 Quant Title : GC Extractables  
 QLast Update : Thu Jan 21 03:31:19 2021  
 Response via : Initial Calibration  
 Integrator: ChemStation

Volume Inj. : 1 µl  
 Signal #1 Phase : ZB-MR2 Signal #2 Phase: ZB-MR1  
 Signal #1 Info : 30M x 0.32mm x0.2 Signal #2 Info : 30M x 0.32mm x 0.50µm

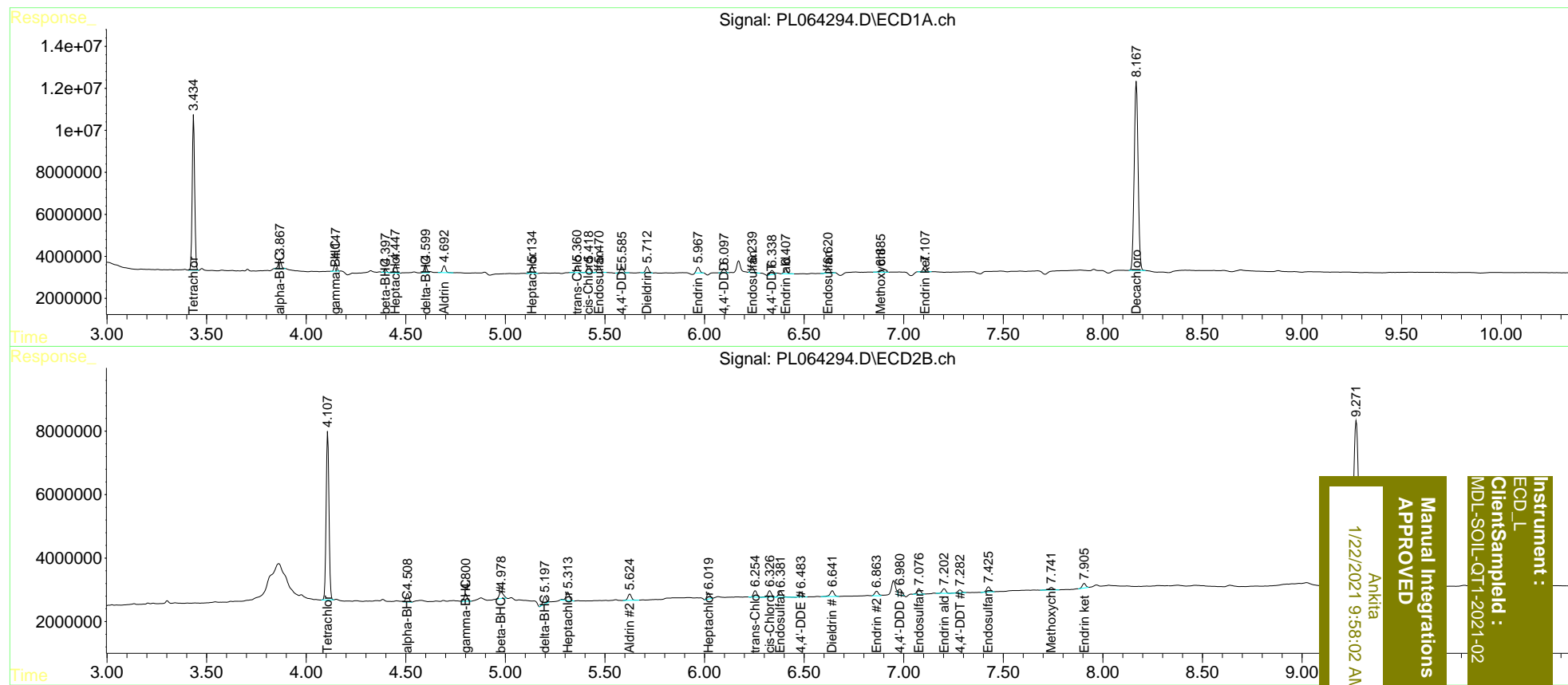
Compound	RT#1	RT#2	Resp#1	Resp#2	ng/ml	ng/ml
-----						
System Monitoring Compounds						
1) SA Tetrachlo...	3.435	4.108	64035128	52576455	22.021	21.795
27) SA Decachlor...	8.168	9.272	122.1E6	95168665	40.555	41.004
Target Compounds						
2) A alpha-BHC	3.868	4.510	4726098	2788142	1.057	0.878
3) MA gamma-BHC...	4.149	4.802	3470331	2424957	0.803	0.795
4) MA Heptachlor	4.448	5.315	4100172	3330464	0.971	1.026
5) MB Aldrin	4.694	5.625	3486648	2466027	0.900	0.854
6) B beta-BHC	4.398	4.978	1546881	3014747	0.838	1.697m#
7) B delta-BHC	4.599	5.200	3945844	2593028	0.953m	0.949
8) B Heptachlo...	5.135	6.021	3795896	2053885	1.023	0.859
9) A Endosulfan I	5.471	6.382	3286440	2607467	0.959	1.014
10) B trans-Chl...	5.361	6.255	3894903	2434705	1.003	0.849
11) B cis-Chlor...	5.420	6.328	3540687	2766478	0.938	0.953
12) B 4,4'-DDE	5.586	6.484	3269562	1926047	0.923	0.727
13) MA Dieldrin	5.713	6.642	3194212	2613771	0.836	0.938
14) MA Endrin	5.967	6.863	3142429	1903193	0.916m	0.830m
15) B Endosulfa...	6.240	7.076	2788323	2216406	0.910	0.982m
16) A 4,4'-DDD	6.097	6.980	2278374	2523785	0.782m	1.127m#
17) MA 4,4'-DDT	6.338	7.283	2604363	1249032	0.871m	0.586 #
18) B Endrin al...	6.408	7.203	2617361	1780580	0.994	0.901
19) B Endosulfa...	6.622	7.426	3252842	2116163	1.018	0.940
20) A Methoxychlor	6.886	7.742	1434943	1184880	0.904	0.940
21) B Endrin ke...	7.108	7.905	3337364	1837036	0.993	0.818m

(f)=RT Delta > 1/2 Window (#)=Amounts differ by > 25% (m)=manual int.

Data Path : Z:\pestpcbsrv\HPCHEM1\ECD\_L\Data\PL012221\  
 Data File : PL064294.D  
 Signal(s) : Signal #1: ECD1A.ch Signal #2: ECD2B.ch  
 Acq On : 21 Jan 2021 10:31  
 Operator : AR\AJ  
 Sample : L5214-04  
 Misc : PEST MDL 1 PPB  
 ALS Vial : 9 Sample Multiplier: 1

Integration File signal 1: autoint1.e  
 Integration File signal 2: autoint2.e  
 Quant Time: Jan 22 01:59:51 2021  
 Quant Method : Z:\pestpcbsrv\HPCHEM1\ECD\_L\methods\PL012121CLP.M  
 Quant Title : GC Extractables  
 QLast Update : Thu Jan 21 03:31:19 2021  
 Response via : Initial Calibration  
 Integrator: ChemStation

Volume Inj. : 1 µl  
 Signal #1 Phase : ZB-MR2 Signal #2 Phase: ZB-MR1  
 Signal #1 Info : 30M x 0.32mm x0.2 Signal #2 Info : 30M x 0.32mm x 0.50µm



Instrument : ECD\_L  
 Client Sample Id : MDL-SOIL-QT-1-2021-02  
 Manual Integrations APPROVED  
 Ankitia  
 1/22/2021 9:58:02 AM