

Data Path : Z:\pestpcbsrv\HPCHEM1\ECD_L\Data\PL012224\
 Data File : PL087897.D
 Signal(s) : Signal #1: ECD1A.ch Signal #2: ECD2B.ch
 Acq On : 22 Jan 2024 17:00
 Operator : AR\AJ
 Sample : PSTDCCC050
 Misc :
 ALS Vial : 4 Sample Multiplier: 1

Instrument :
 ECD_L
 ClientSampleId :
 PSTDCCC050

Integration File signal 1: autoint1.e
 Integration File signal 2: autoint2.e
 Quant Time: Jan 22 21:48:50 2024
 Quant Method : Z:\pestpcbsrv\HPCHEM1\ECD_L\methods\PL122823.M
 Quant Title : GC Extractables
 QLast Update : Fri Dec 29 03:17:47 2023
 Response via : Initial Calibration
 Integrator: ChemStation

Volume Inj. : 1 µl
 Signal #1 Phase : ZB-MR2 Signal #2 Phase: ZB-MR1
 Signal #1 Info : 30M x 0.32mm x0.2 Signal #2 Info : 30M x 0.32mm x0.5µm

Compound	RT#1	RT#2	Resp#1	Resp#2	ng/ml	ng/ml

System Monitoring Compounds						
1) SA Tetrachlo...	3.428	2.672	153.6E6	67563972	51.321	55.776
28) SA Decachlor...	8.993	7.863	144.1E6	68043705	50.589	53.712
Target Compounds						
2) A alpha-BHC	3.886	3.177	236.5E6	102.0E6	52.703	55.331
3) MA gamma-BHC...	4.219	3.508	228.0E6	98714586	52.283	54.320
4) MA Heptachlor	4.813	3.849	208.6E6	88493229	47.467	49.687
5) MB Aldrin	5.156	4.130	219.8E6	95529313	51.296	54.127
6) B beta-BHC	4.420	3.810	94171091	41006868	50.616	53.615
7) B delta-BHC	4.666	4.039	221.5E6	96827114	52.631	55.779
8) B Heptachlo...	5.587	4.638	199.6E6	85574043	52.101	53.692
9) A Endosulfan I	5.973	5.009	185.1E6	79991476	51.325	51.709
10) B gamma-Chl...	5.844	4.892	197.4E6	87662356	51.068	54.311
11) B alpha-Chl...	5.925	4.956	201.0E6	87779083	52.305	52.891
12) B 4,4'-DDE	6.106	5.155	169.7E6	76136373	53.082	56.602
13) MA Dieldrin	6.250	5.277	193.3E6	85969193	51.881	54.098
14) MA Endrin	6.480	5.553	137.7E6	67532461	43.852	47.626
15) B Endosulfa...	6.703	5.851	162.0E6	75006774	50.525	54.790
16) A 4,4'-DDD	6.628	5.713	140.6E6	66362684	54.518	58.855
17) MA 4,4'-DDT	6.945	5.966	124.4E6	57518126	43.500	46.215
18) B Endrin al...	6.835	6.033	120.7E6	55889359	47.997	48.089
19) B Endosulfa...	7.071	6.258	157.6E6	72454698	51.526	55.196
20) A Methoxychlor	7.430	6.552	62153992	31175769	38.282	42.354
21) B Endrin ke...	7.557	6.764	177.8E6	90650001	54.671	59.130
22) Mirex	8.035	6.945	137.0E6	69372416	48.848	51.718
23) Chlordane-1	0.000	3.666	0	14004	N.D.	0.300 #
24) Chlordane-2	0.000	4.269	0	118555	N.D.	2.119 #
25) Chlordane-3	5.844	4.892	197.4E6	87662356	354.894	553.926 #
26) Chlordane-4	5.925	4.956	201.0E6	87779083	290.571	513.755 #
27) Chlordane-5	0.000	5.632	0	205463	N.D.	4.365 #

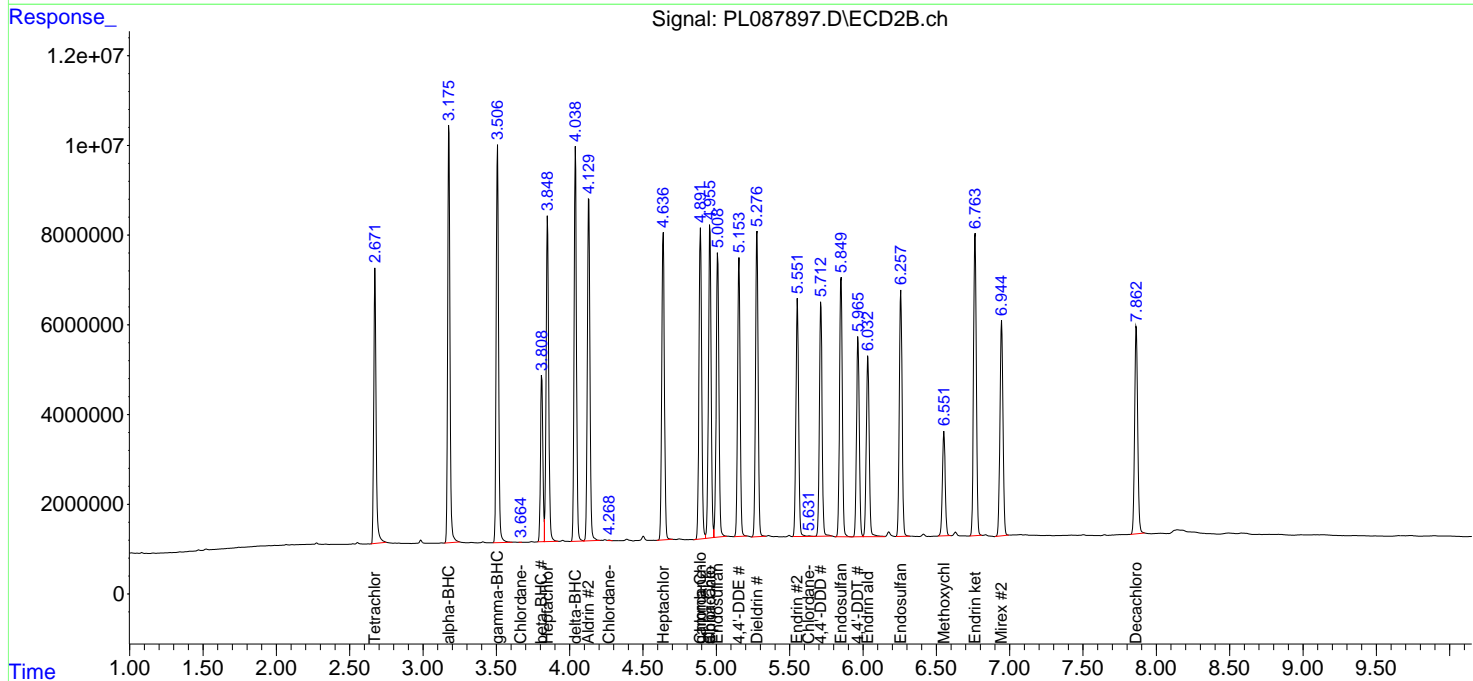
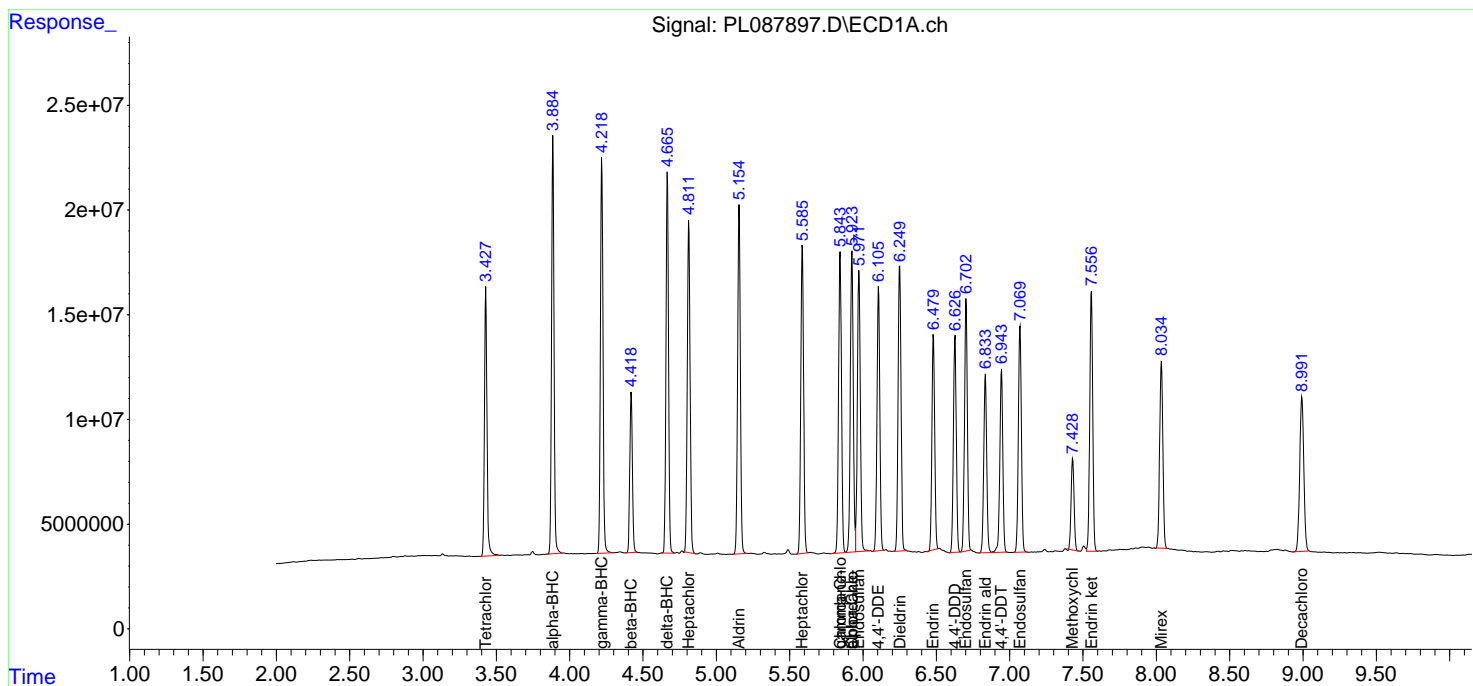
(f)=RT Delta > 1/2 Window (#)=Amounts differ by > 25% (m)=manual int.

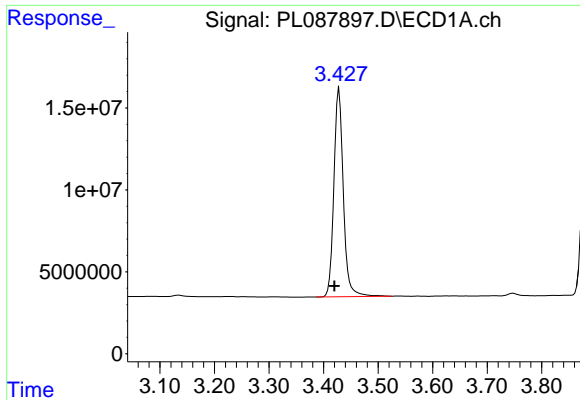
Data Path : Z:\pestpcbsrv\HPCHEM1\ECD_L\Data\PL012224\
 Data File : PL087897.D
 Signal(s) : Signal #1: ECD1A.ch Signal #2: ECD2B.ch
 Acq On : 22 Jan 2024 17:00
 Operator : AR\AJ
 Sample : PSTDCCC050
 Misc :
 ALS Vial : 4 Sample Multiplier: 1

Instrument :
 ECD_L
 ClientSampleId :
 PSTDCCC050

Integration File signal 1: autoint1.e
 Integration File signal 2: autoint2.e
 Quant Time: Jan 22 21:48:50 2024
 Quant Method : Z:\pestpcbsrv\HPCHEM1\ECD_L\methods\PL122823.M
 Quant Title : GC Extractables
 QLast Update : Fri Dec 29 03:17:47 2023
 Response via : Initial Calibration
 Integrator: ChemStation

Volume Inj. : 1 µl
 Signal #1 Phase : ZB-MR2 Signal #2 Phase: ZB-MR1
 Signal #1 Info : 30M x 0.32mm x0.2 Signal #2 Info : 30M x 0.32mm x0.5µm

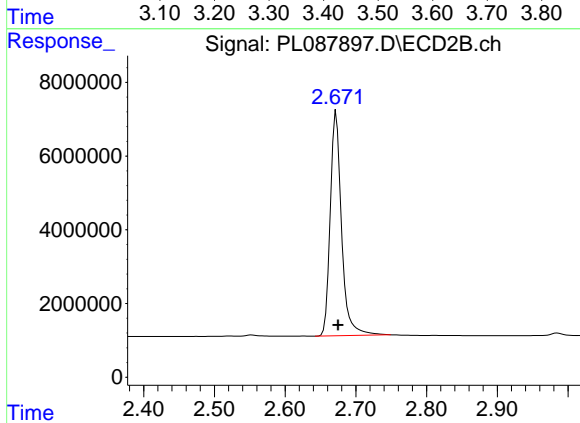




#1 Tetrachloro-m-xylene

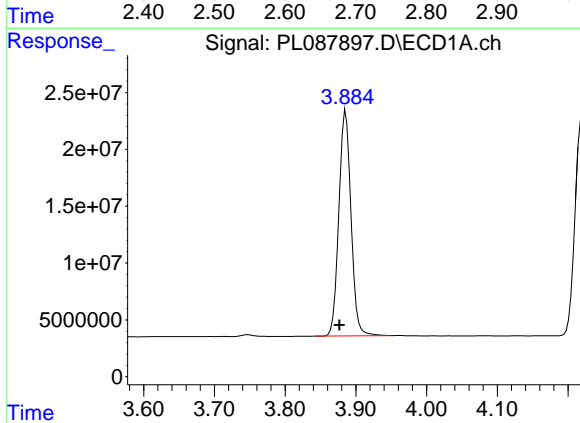
R.T.: 3.428 min
 Delta R.T.: 0.008 min
 Response: 153641697
 Conc: 51.32 ng/ml

Instrument :
 ECD_L
 ClientSampleId :
 PSTDCCC050



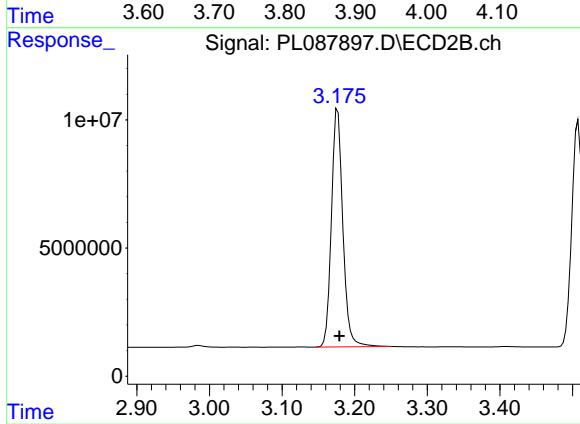
#1 Tetrachloro-m-xylene

R.T.: 2.672 min
 Delta R.T.: -0.002 min
 Response: 67563972
 Conc: 55.78 ng/ml



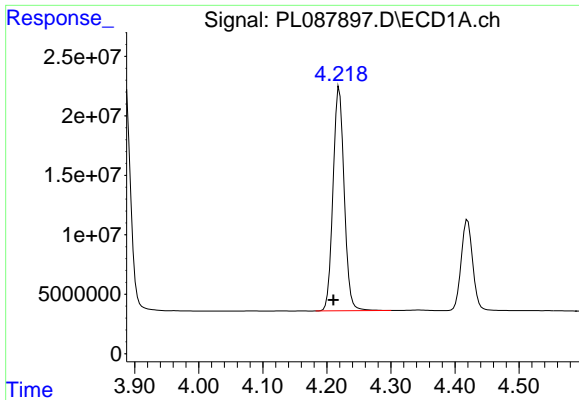
#2 alpha-BHC

R.T.: 3.886 min
 Delta R.T.: 0.009 min
 Response: 236475097
 Conc: 52.70 ng/ml



#2 alpha-BHC

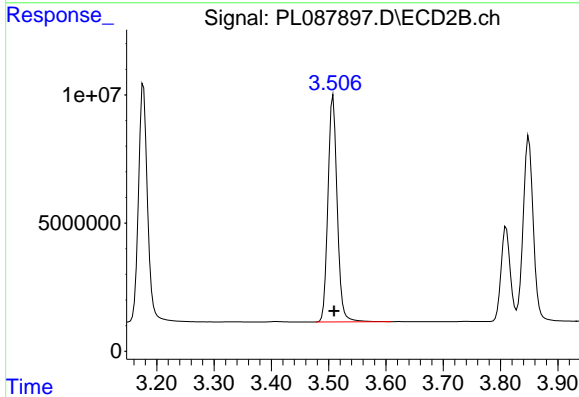
R.T.: 3.177 min
 Delta R.T.: -0.002 min
 Response: 101980180
 Conc: 55.33 ng/ml



#3 gamma-BHC (Lindane)

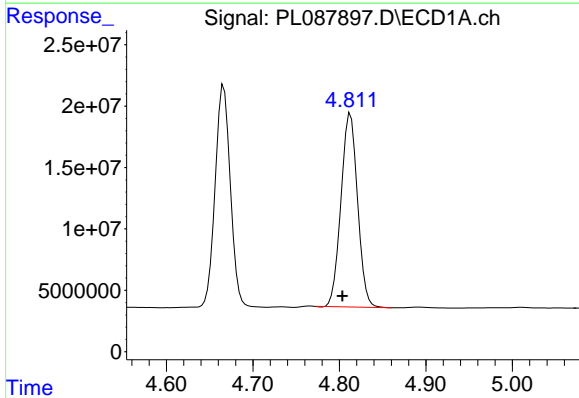
R.T.: 4.219 min
 Delta R.T.: 0.009 min
 Response: 228041608
 Conc: 52.28 ng/ml

Instrument :
 ECD_L
 ClientSampleId :
 PSTDCCC050



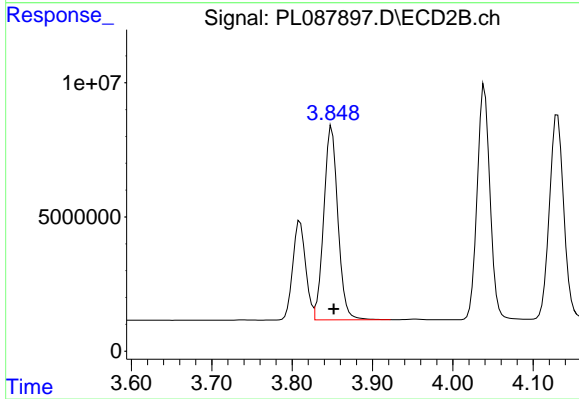
#3 gamma-BHC (Lindane)

R.T.: 3.508 min
 Delta R.T.: -0.002 min
 Response: 98714586
 Conc: 54.32 ng/ml



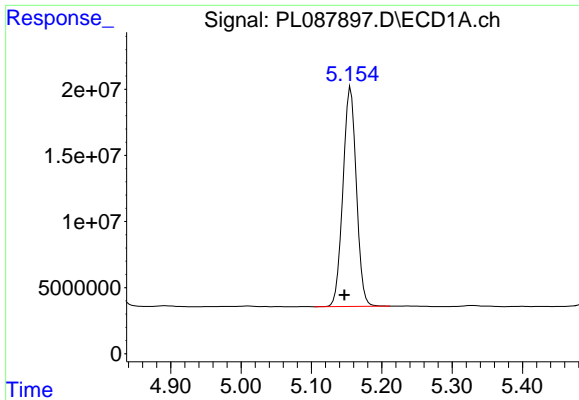
#4 Heptachlor

R.T.: 4.813 min
 Delta R.T.: 0.009 min
 Response: 208577194
 Conc: 47.47 ng/ml



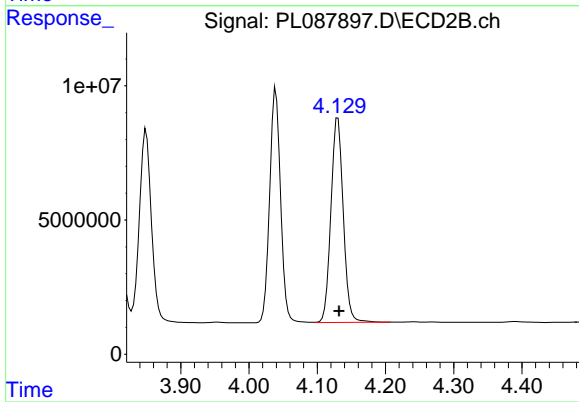
#4 Heptachlor

R.T.: 3.849 min
 Delta R.T.: -0.003 min
 Response: 88493229
 Conc: 49.69 ng/ml

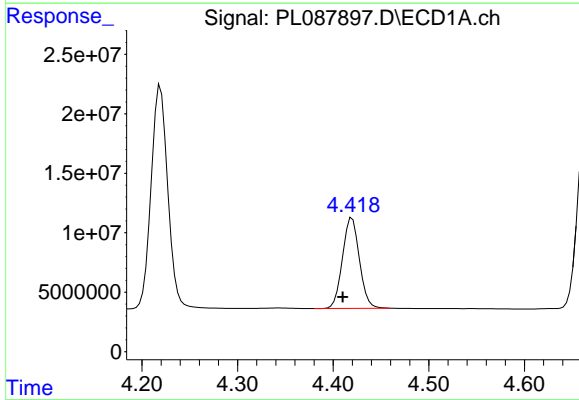


#5 Aldrin
 R.T.: 5.156 min
 Delta R.T.: 0.009 min
 Response: 219848074
 Conc: 51.30 ng/ml

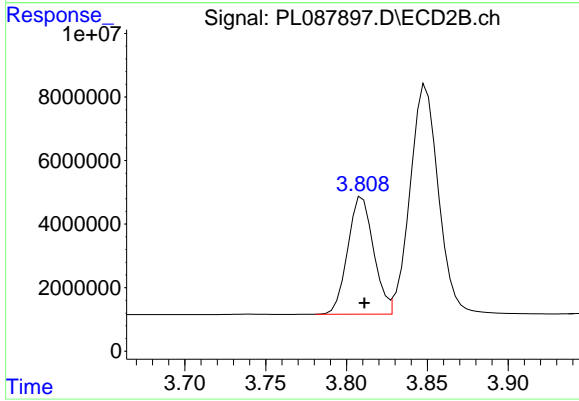
Instrument :
 ECD_L
 ClientSampleId :
 PSTDCCC050



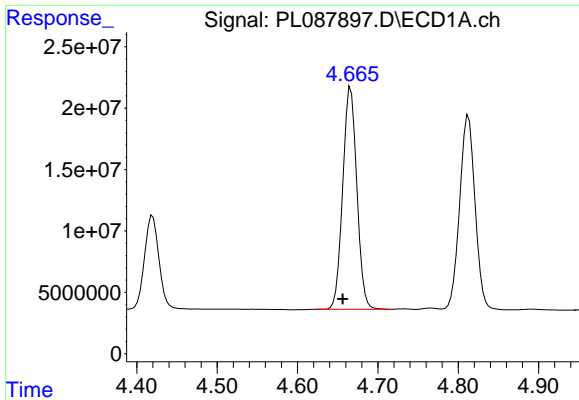
#5 Aldrin
 R.T.: 4.130 min
 Delta R.T.: -0.002 min
 Response: 95529313
 Conc: 54.13 ng/ml



#6 beta-BHC
 R.T.: 4.420 min
 Delta R.T.: 0.010 min
 Response: 94171091
 Conc: 50.62 ng/ml



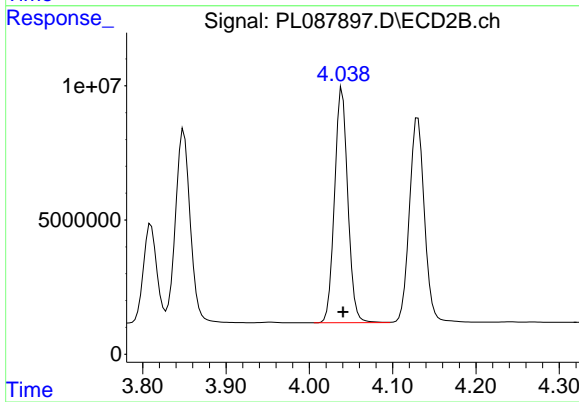
#6 beta-BHC
 R.T.: 3.810 min
 Delta R.T.: -0.001 min
 Response: 41006868
 Conc: 53.61 ng/ml



#7 delta-BHC

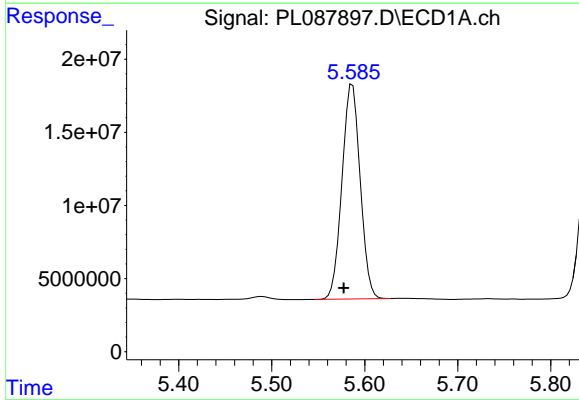
R.T.: 4.666 min
 Delta R.T.: 0.010 min
 Response: 221465628
 Conc: 52.63 ng/ml

Instrument :
 ECD_L
 ClientSampleId :
 PSTDCCC050



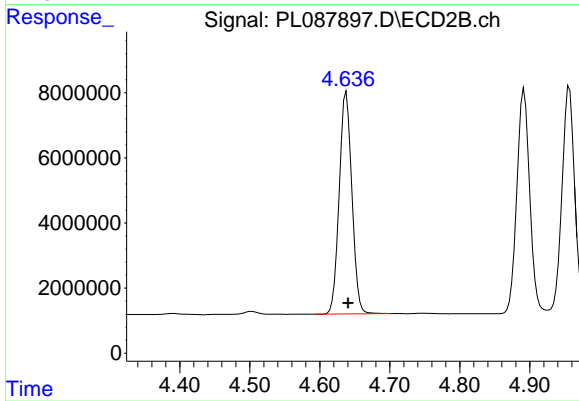
#7 delta-BHC

R.T.: 4.039 min
 Delta R.T.: -0.001 min
 Response: 96827114
 Conc: 55.78 ng/ml



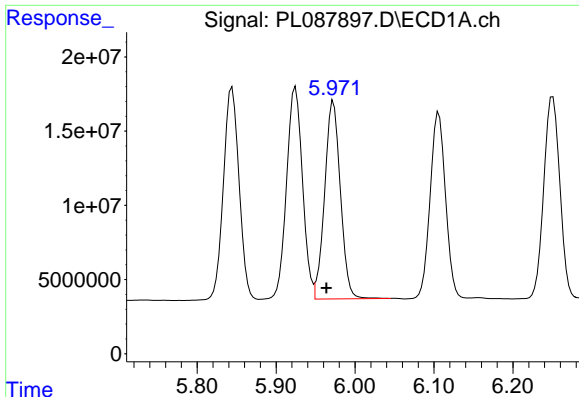
#8 Heptachlor epoxide

R.T.: 5.587 min
 Delta R.T.: 0.010 min
 Response: 199609267
 Conc: 52.10 ng/ml



#8 Heptachlor epoxide

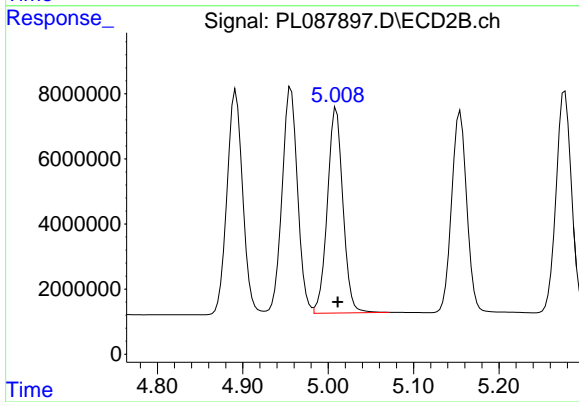
R.T.: 4.638 min
 Delta R.T.: -0.002 min
 Response: 85574043
 Conc: 53.69 ng/ml



#9 Endosulfan I

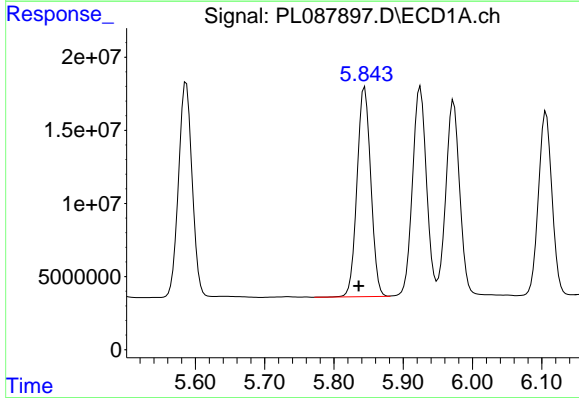
R.T.: 5.973 min
 Delta R.T.: 0.009 min
 Response: 185078516
 Conc: 51.32 ng/ml

Instrument :
 ECD_L
 ClientSampleId :
 PSTDCCC050



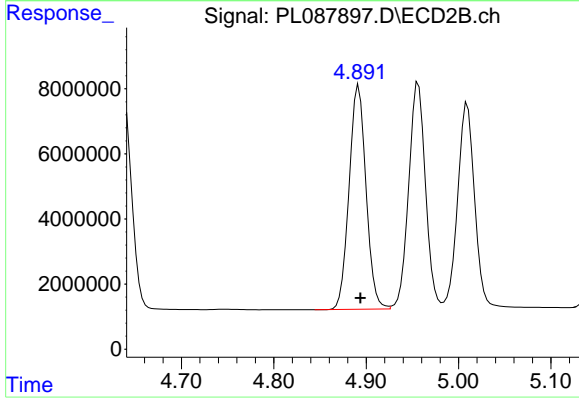
#9 Endosulfan I

R.T.: 5.009 min
 Delta R.T.: -0.002 min
 Response: 79991476
 Conc: 51.71 ng/ml



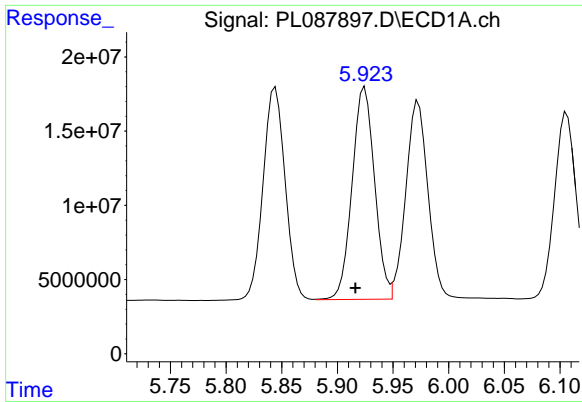
#10 gamma-Chlordane

R.T.: 5.844 min
 Delta R.T.: 0.009 min
 Response: 197415319
 Conc: 51.07 ng/ml



#10 gamma-Chlordane

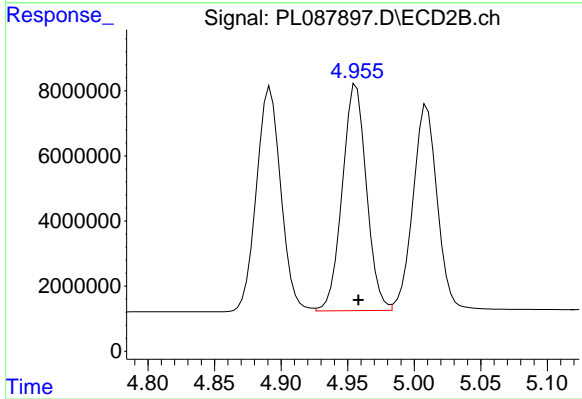
R.T.: 4.892 min
 Delta R.T.: -0.002 min
 Response: 87662356
 Conc: 54.31 ng/ml



#11 alpha-Chlordane

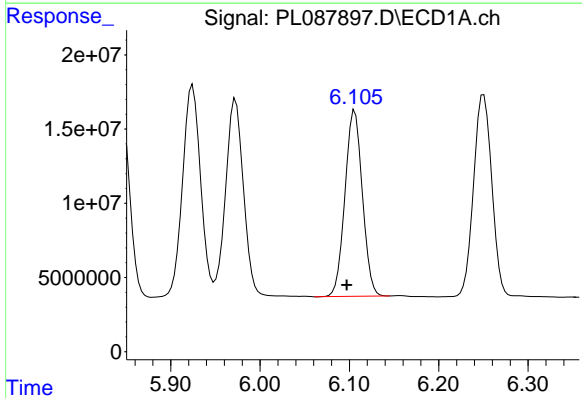
R.T.: 5.925 min
 Delta R.T.: 0.008 min
 Response: 200993320
 Conc: 52.31 ng/ml

Instrument :
 ECD_L
 ClientSampleId :
 PSTDCCC050



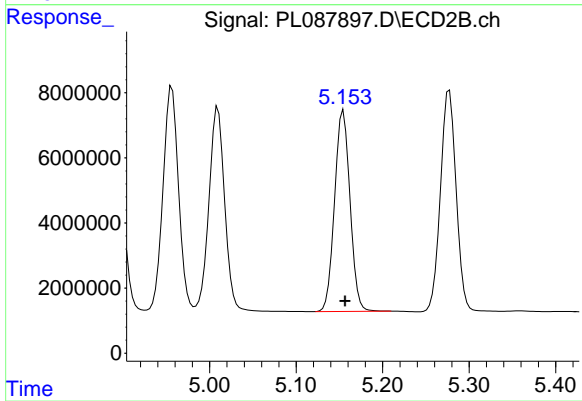
#11 alpha-Chlordane

R.T.: 4.956 min
 Delta R.T.: -0.002 min
 Response: 87779083
 Conc: 52.89 ng/ml



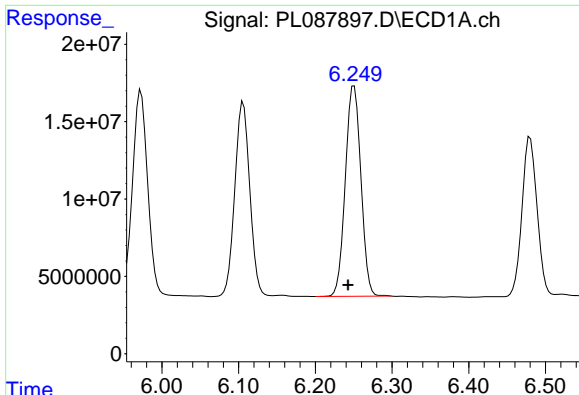
#12 4,4'-DDE

R.T.: 6.106 min
 Delta R.T.: 0.009 min
 Response: 169713680
 Conc: 53.08 ng/ml



#12 4,4'-DDE

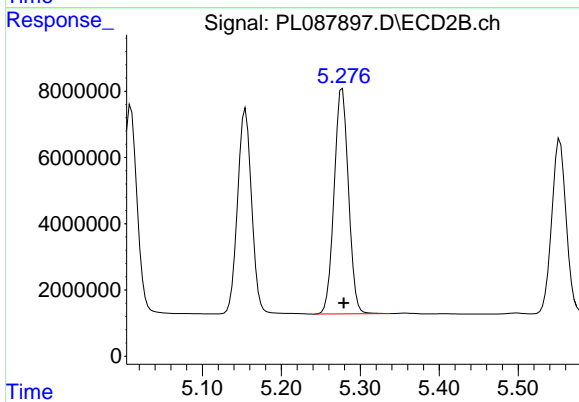
R.T.: 5.155 min
 Delta R.T.: -0.002 min
 Response: 76136373
 Conc: 56.60 ng/ml



#13 Dieldrin

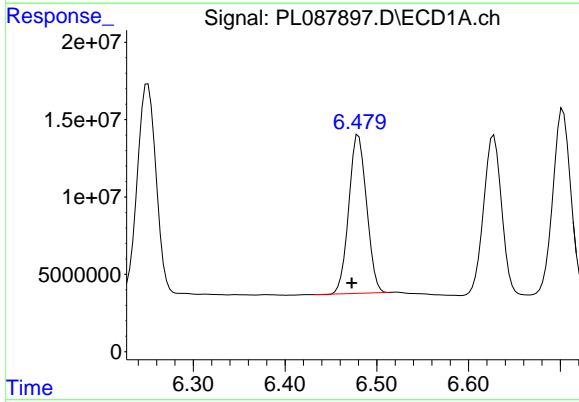
R.T.: 6.250 min
 Delta R.T.: 0.008 min
 Response: 193251262
 Conc: 51.88 ng/ml

Instrument :
 ECD_L
 ClientSampleId :
 PSTDCCC050



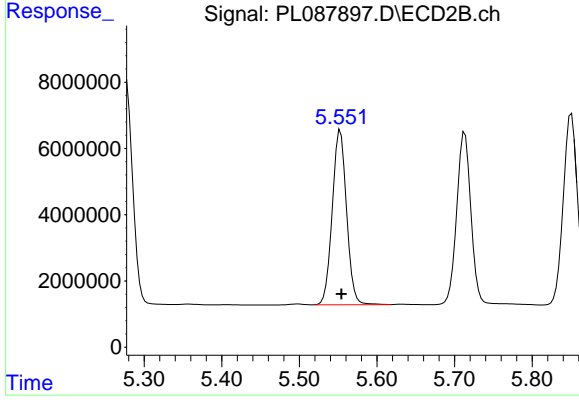
#13 Dieldrin

R.T.: 5.277 min
 Delta R.T.: -0.002 min
 Response: 85969193
 Conc: 54.10 ng/ml



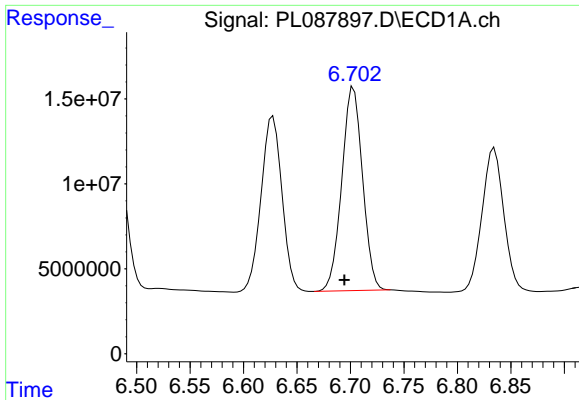
#14 Endrin

R.T.: 6.480 min
 Delta R.T.: 0.007 min
 Response: 137736182
 Conc: 43.85 ng/ml



#14 Endrin

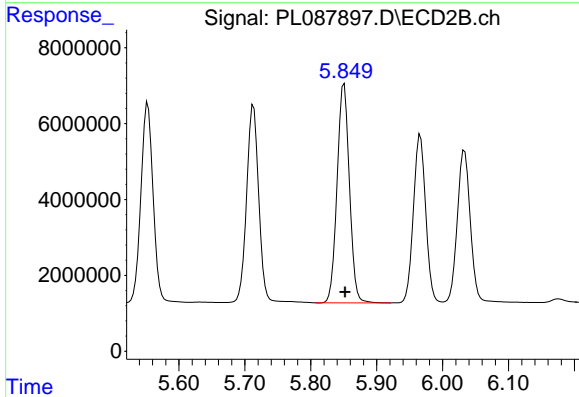
R.T.: 5.553 min
 Delta R.T.: -0.001 min
 Response: 67532461
 Conc: 47.63 ng/ml



#15 Endosulfan II

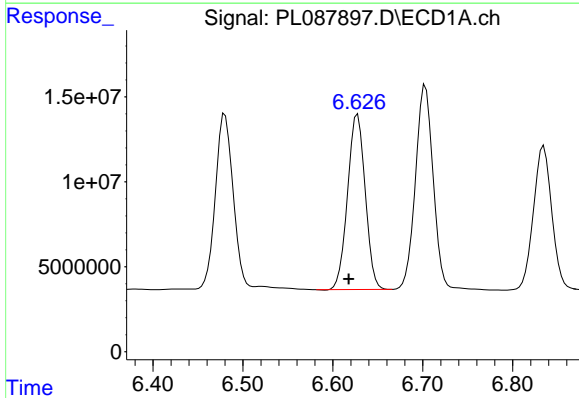
R.T.: 6.703 min
 Delta R.T.: 0.008 min
 Response: 162033504
 Conc: 50.52 ng/ml

Instrument :
 ECD_L
 ClientSampleId :
 PSTDCCC050



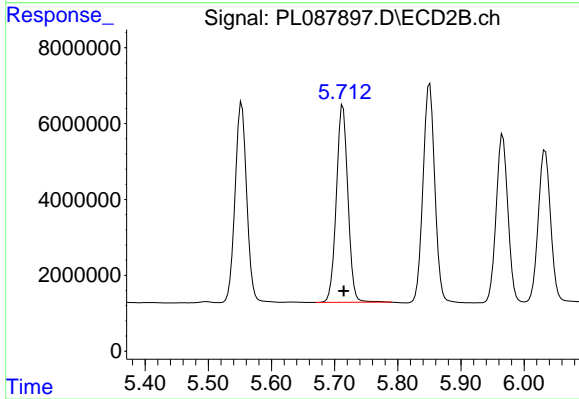
#15 Endosulfan II

R.T.: 5.851 min
 Delta R.T.: -0.002 min
 Response: 75006774
 Conc: 54.79 ng/ml



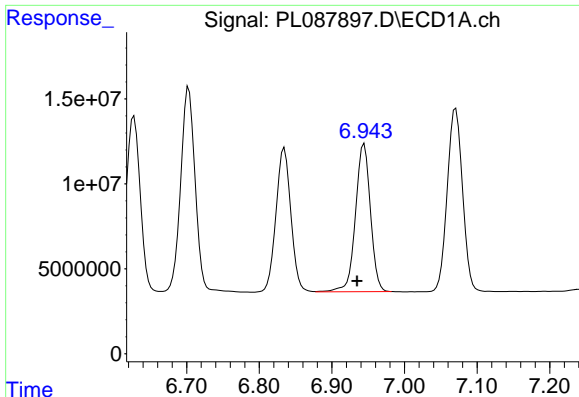
#16 4,4'-DDD

R.T.: 6.628 min
 Delta R.T.: 0.010 min
 Response: 140577721
 Conc: 54.52 ng/ml



#16 4,4'-DDD

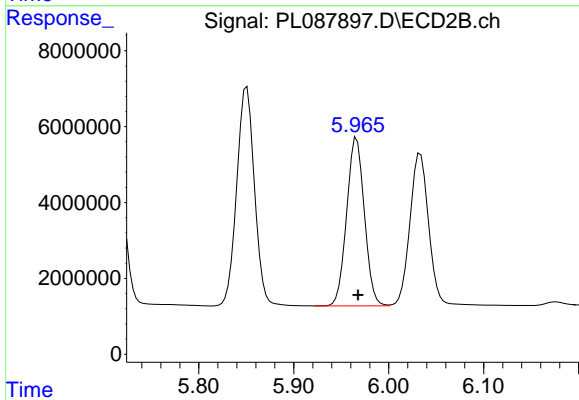
R.T.: 5.713 min
 Delta R.T.: -0.001 min
 Response: 66362684
 Conc: 58.85 ng/ml



#17 4,4'-DDT

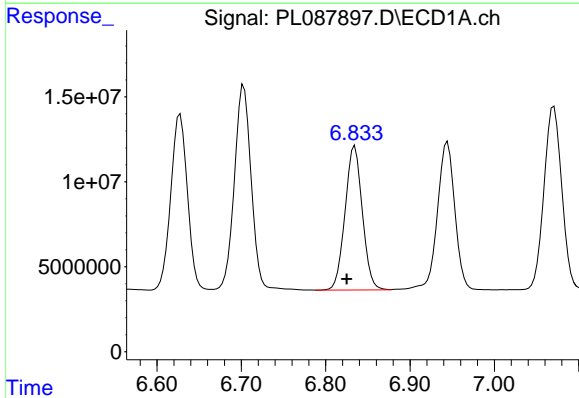
R.T.: 6.945 min
 Delta R.T.: 0.010 min
 Response: 124390430
 Conc: 43.50 ng/ml

Instrument :
 ECD_L
 ClientSampleId :
 PSTDCCC050



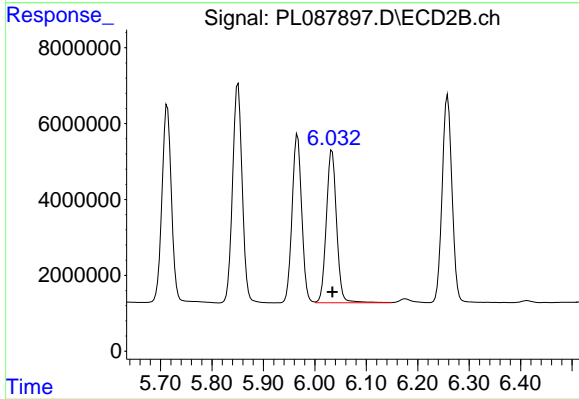
#17 4,4'-DDT

R.T.: 5.966 min
 Delta R.T.: -0.001 min
 Response: 57518126
 Conc: 46.21 ng/ml



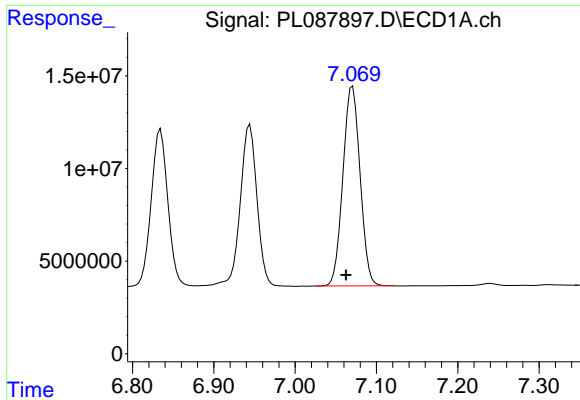
#18 Endrin aldehyde

R.T.: 6.835 min
 Delta R.T.: 0.010 min
 Response: 120727850
 Conc: 48.00 ng/ml



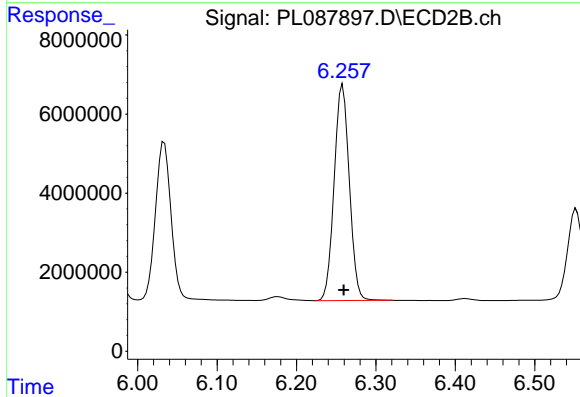
#18 Endrin aldehyde

R.T.: 6.033 min
 Delta R.T.: -0.001 min
 Response: 55889359
 Conc: 48.09 ng/ml

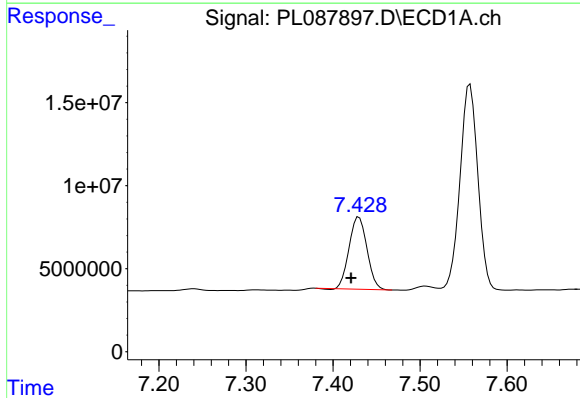


#19 Endosulfan Sulfate
 R.T.: 7.071 min
 Delta R.T.: 0.008 min
 Response: 157593093
 Conc: 51.53 ng/ml

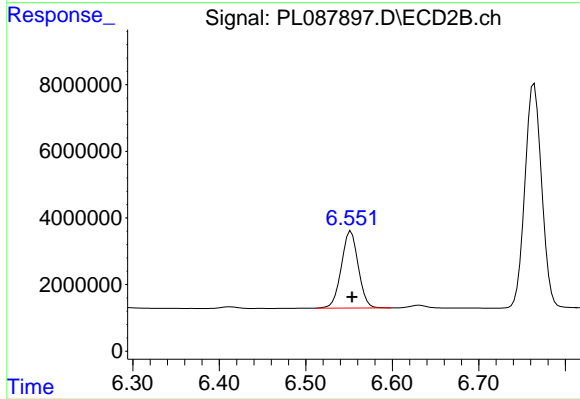
Instrument :
 ECD_L
 ClientSampleId :
 PSTDCCC050



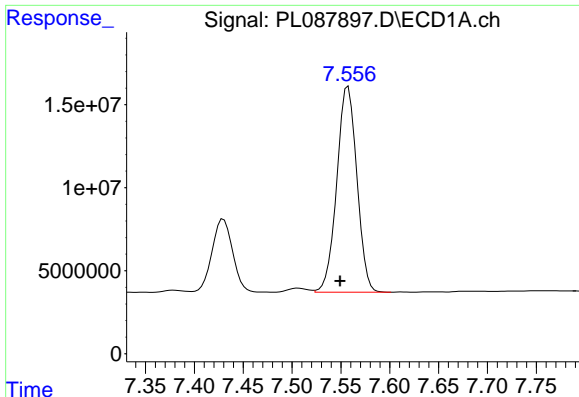
#19 Endosulfan Sulfate
 R.T.: 6.258 min
 Delta R.T.: -0.002 min
 Response: 72454698
 Conc: 55.20 ng/ml



#20 Methoxychlor
 R.T.: 7.430 min
 Delta R.T.: 0.009 min
 Response: 62153992
 Conc: 38.28 ng/ml



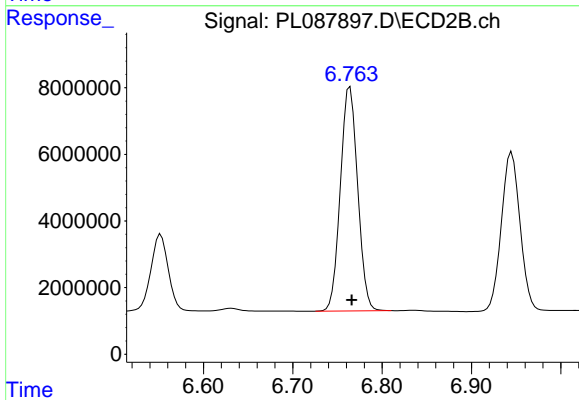
#20 Methoxychlor
 R.T.: 6.552 min
 Delta R.T.: -0.001 min
 Response: 31175769
 Conc: 42.35 ng/ml



#21 Endrin ketone

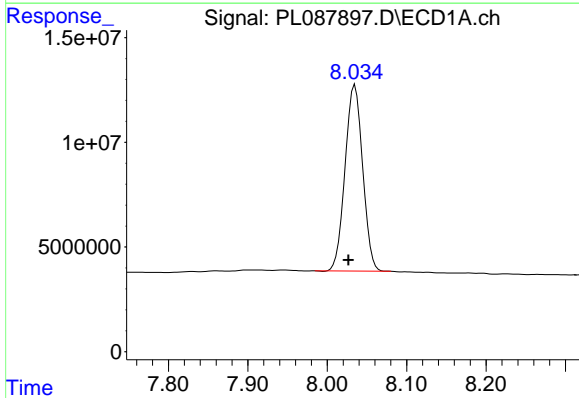
R.T.: 7.557 min
 Delta R.T.: 0.008 min
 Response: 177823761
 Conc: 54.67 ng/ml

Instrument :
 ECD_L
 ClientSampleId :
 PSTDCCC050



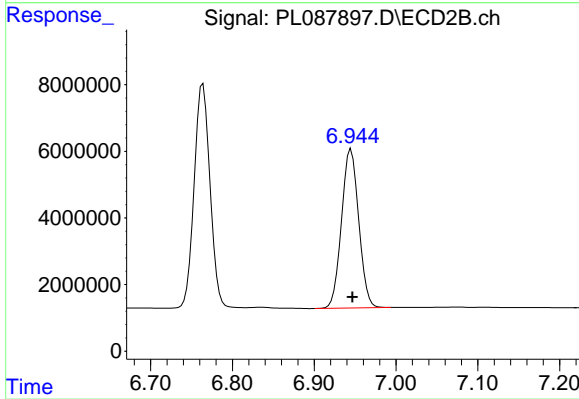
#21 Endrin ketone

R.T.: 6.764 min
 Delta R.T.: -0.002 min
 Response: 90650001
 Conc: 59.13 ng/ml



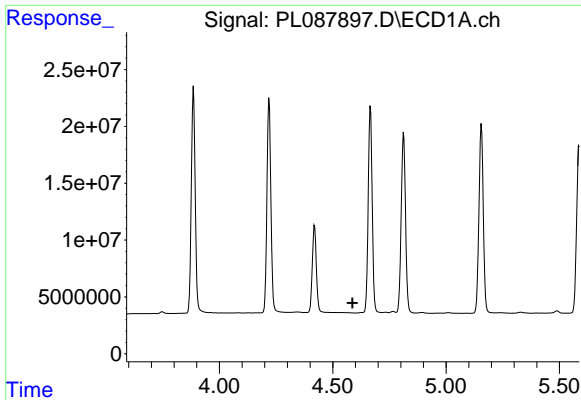
#22 Mirex

R.T.: 8.035 min
 Delta R.T.: 0.008 min
 Response: 136964009
 Conc: 48.85 ng/ml



#22 Mirex

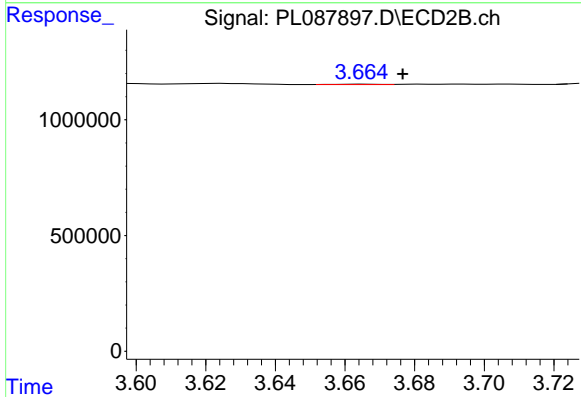
R.T.: 6.945 min
 Delta R.T.: -0.002 min
 Response: 69372416
 Conc: 51.72 ng/ml



#23 Chlordane-1

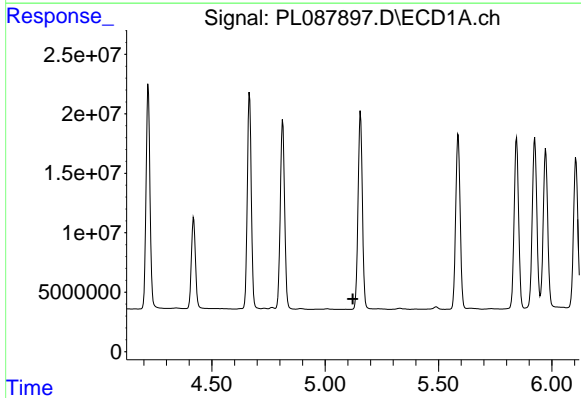
R.T.: 0.000 min
 Exp R.T.: 4.587 min
 Response: 0
 Conc: N.D.

Instrument :
 ECD_L
 ClientSampleId :
 PSTDCCC050



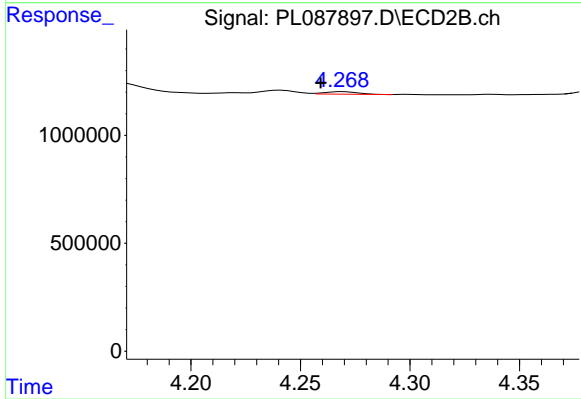
#23 Chlordane-1

R.T.: 3.666 min
 Delta R.T.: -0.011 min
 Response: 14004
 Conc: 0.30 ng/ml



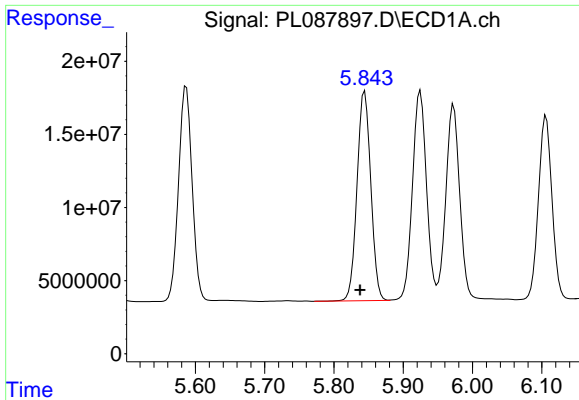
#24 Chlordane-2

R.T.: 0.000 min
 Exp R.T.: 5.123 min
 Response: 0
 Conc: N.D.



#24 Chlordane-2

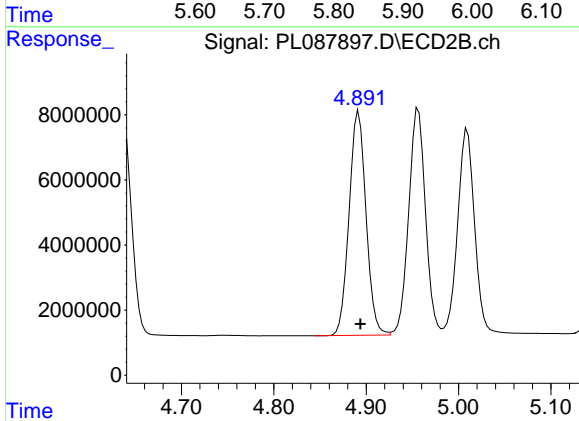
R.T.: 4.269 min
 Delta R.T.: 0.010 min
 Response: 118555
 Conc: 2.12 ng/ml



#25 Chlordane-3

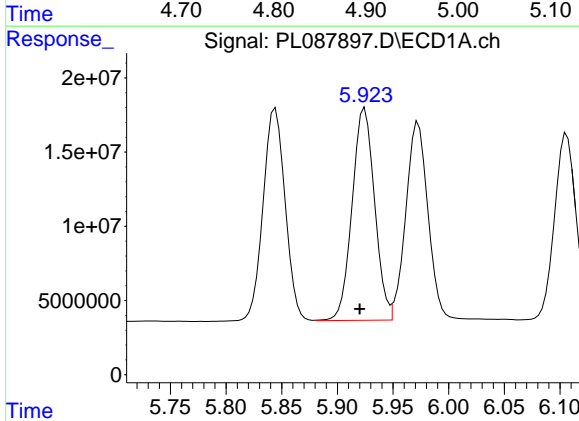
R.T.: 5.844 min
 Delta R.T.: 0.007 min
 Response: 197415319
 Conc: 354.89 ng/ml

Instrument :
 ECD_L
 ClientSampleId :
 PSTDCCC050



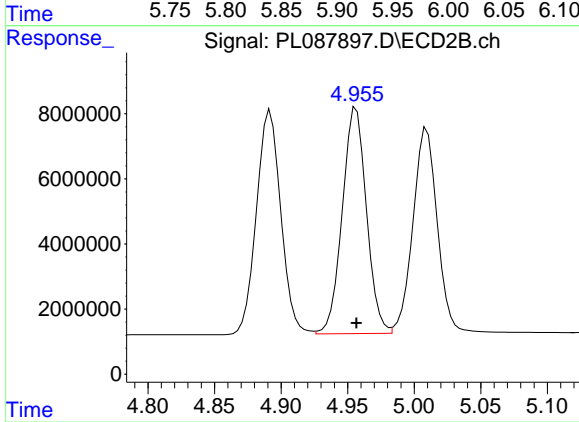
#25 Chlordane-3

R.T.: 4.892 min
 Delta R.T.: -0.002 min
 Response: 87662356
 Conc: 553.93 ng/ml



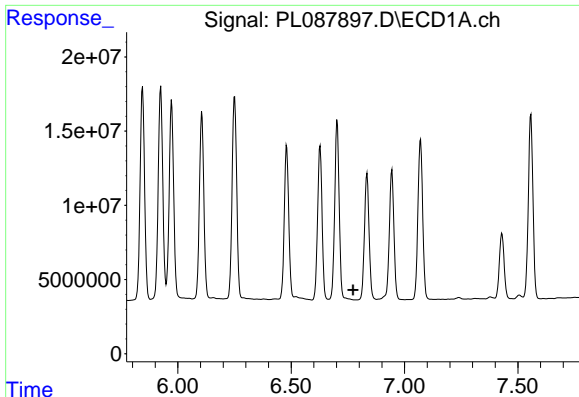
#26 Chlordane-4

R.T.: 5.925 min
 Delta R.T.: 0.005 min
 Response: 200993320
 Conc: 290.57 ng/ml



#26 Chlordane-4

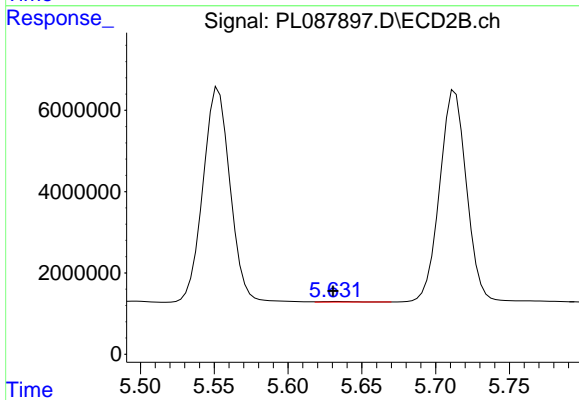
R.T.: 4.956 min
 Delta R.T.: 0.000 min
 Response: 87779083
 Conc: 513.75 ng/ml



#27 Chlordane-5

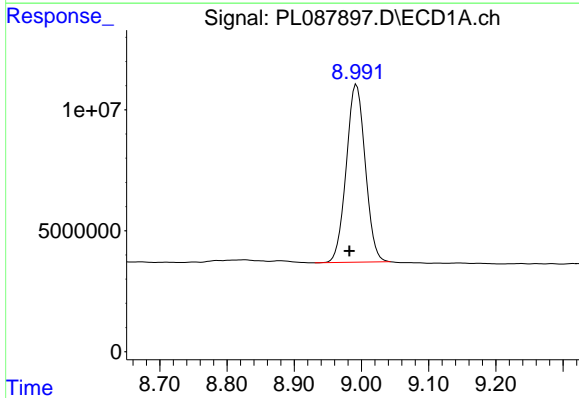
R.T.: 0.000 min
 Exp R.T.: 6.773 min
 Response: 0
 Conc: N.D.

Instrument :
 ECD_L
 ClientSampleId :
 PSTDCCC050



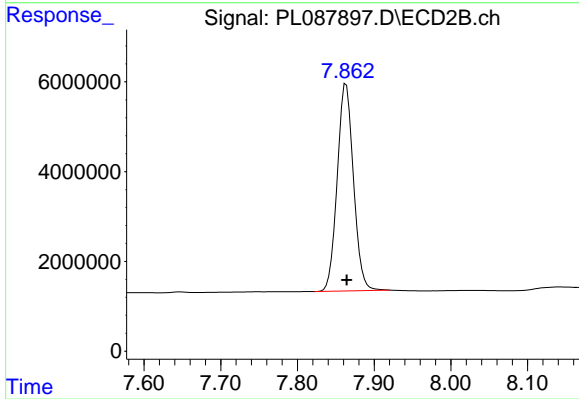
#27 Chlordane-5

R.T.: 5.632 min
 Delta R.T.: 0.002 min
 Response: 205463
 Conc: 4.36 ng/ml



#28 Decachlorobiphenyl

R.T.: 8.993 min
 Delta R.T.: 0.011 min
 Response: 144078183
 Conc: 50.59 ng/ml



#28 Decachlorobiphenyl

R.T.: 7.863 min
 Delta R.T.: 0.000 min
 Response: 68043705
 Conc: 53.71 ng/ml