

Data Path : Z:\pestpcbsrv\HPCHEM1\ECD_L\Data\PL012420\
 Data File : PL056035.D
 Signal(s) : Signal #1: ECD1A.ch Signal #2: ECD2B.ch
 Acq On : 24 Jan 2020 15:31
 Operator : AJ\MA
 Sample : L1246-01
 Misc :
 ALS Vial : 15 Sample Multiplier: 1

Instrument :
 ECD_L
 ClientSampled :
 SP-1

Integration File signal 1: autoint1.e
 Integration File signal 2: autoint2.e
 Quant Time: Jan 24 22:18:47 2020
 Quant Method : Z:\pestpcbsrv\HPCHEM1\ECD_L\methods\PL012020.M
 Quant Title : GC Extractables
 QLast Update : Tue Jan 21 02:21:03 2020
 Response via : Initial Calibration
 Integrator: ChemStation

Volume Inj. : 1 µl
 Signal #1 Phase : ZB-MR2 Signal #2 Phase: ZB-MR1
 Signal #1 Info : 30M x 0.32mm x0.2 Signal #2 Info : 30M x 0.32mm x0.5µm

Compound	RT#1	RT#2	Resp#1	Resp#2	ng/ml	ng/ml

System Monitoring Compounds						
1) SA Tetrachlo...	3.489	3.966	211.1E6	64670029	22.025	22.882
28) SA Decachlor...	8.234	8.955	166.1E6	38644256	15.889	16.868
Target Compounds						
2) A alpha-BHC	0.000	4.357	0	26939638	N.D.	6.352 #
3) MA gamma-BHC...	4.215	4.649f	-1988301	4692478	N.D.	1.183
4) MA Heptachlor	4.512	5.129	23392.4E6	7231.3E6	1566.546	2138.592 #
5) MB Aldrin	4.768	5.404f	244.2E6	959.8E6	16.686	280.007 #
6) B beta-BHC	4.468	4.821f	1463553	28307705	0.228	17.838 #
7) B delta-BHC	4.665	5.014	211.1E6	-697716	14.403	N.D. #
8) B Heptachlor...	5.201	5.801	1305.4E6	1633.0E6	94.638	546.493 #
9) A Endosulfan I	5.519f	0.000	1060.4E6	0	81.727	N.D. #
10) B gamma-Chl...	5.431	6.042	32148.2E6	6801.9E6	2291.493	2205.692
11) B alpha-Chl...	5.486	6.114	12011.4E6	4804.2E6	868.852	1555.981 #
12) B 4,4'-DDE	5.654	6.263	13348950	15894954	1.022	5.428 #
13) MA Dieldrin	5.800f	6.399f	153.5E6	14356888	11.094	4.751 #
14) MA Endrin	6.040	6.656f	413.3E6	-11085322	32.717	N.D. #
15) B Endosulfa...	6.321	6.851	4439.8E6	58795141	397.567	21.924 #
17) MA 4,4'-DDT	6.408	7.032f	10877043	8129955	1.075	3.601 #
18) B Endrin al...	6.489	6.952	43562631	70579598	4.192	31.265 #
20) A Methoxychlor	0.000	7.500	0	18572194	N.D.	15.565 #
21) B Endrin ke...	7.159f	7.675f	18331845	75366518	1.456	28.541 #
22) Mirex	7.401f	8.118f	10168204	1543146	1.448	0.846 #
23) Chlordane-1	4.359	4.943	2084.2E6	565.8E6	5684.693	5373.589
24) Chlordane-2	4.859	5.404	3701.6E6	959.8E6	8553.779	8706.310
25) Chlordane-3	5.431	6.042	32148.2E6	6801.9E6	25815.791	17136.800 #
26) Chlordane-4	5.486	6.114	12011.4E6	4804.2E6	11648.554	10234.222
27) Chlordane-5	6.321	6.911	4439.8E6	1027.3E6	11351.588	12538.982

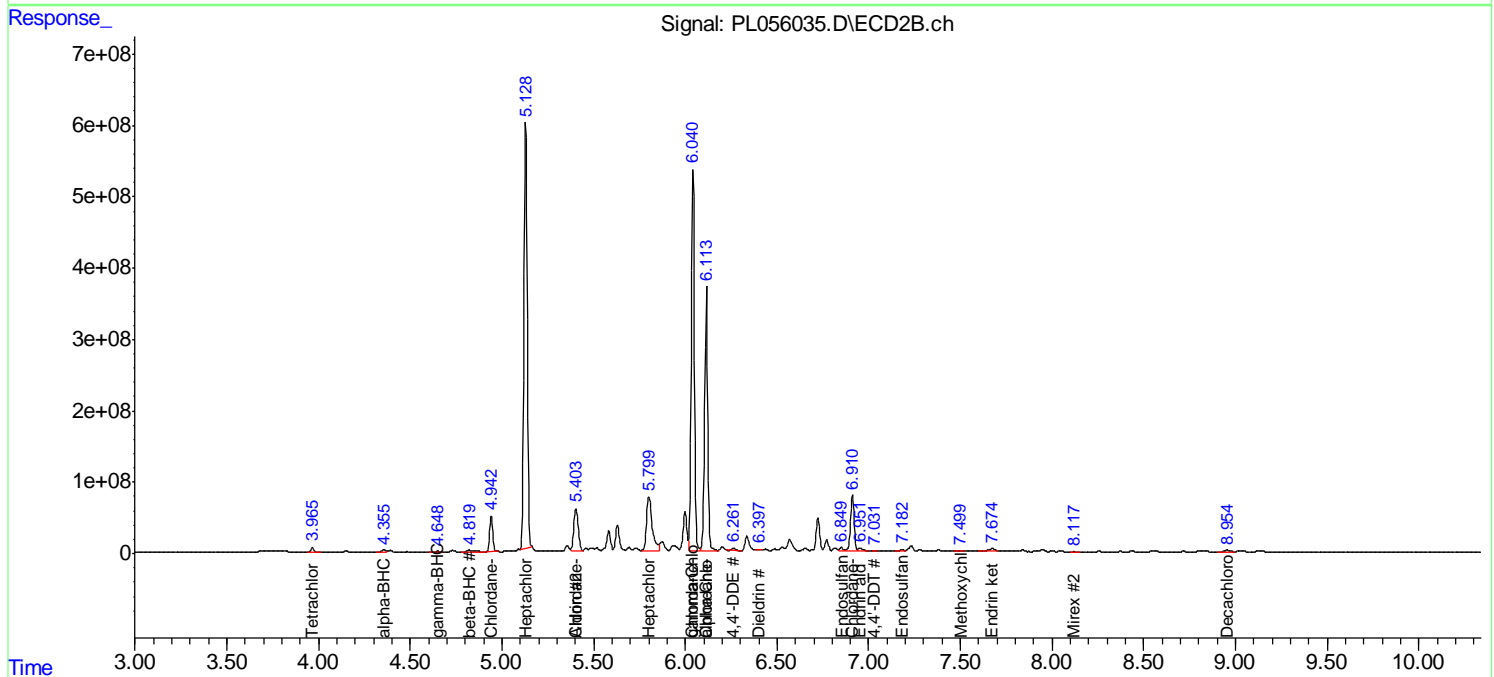
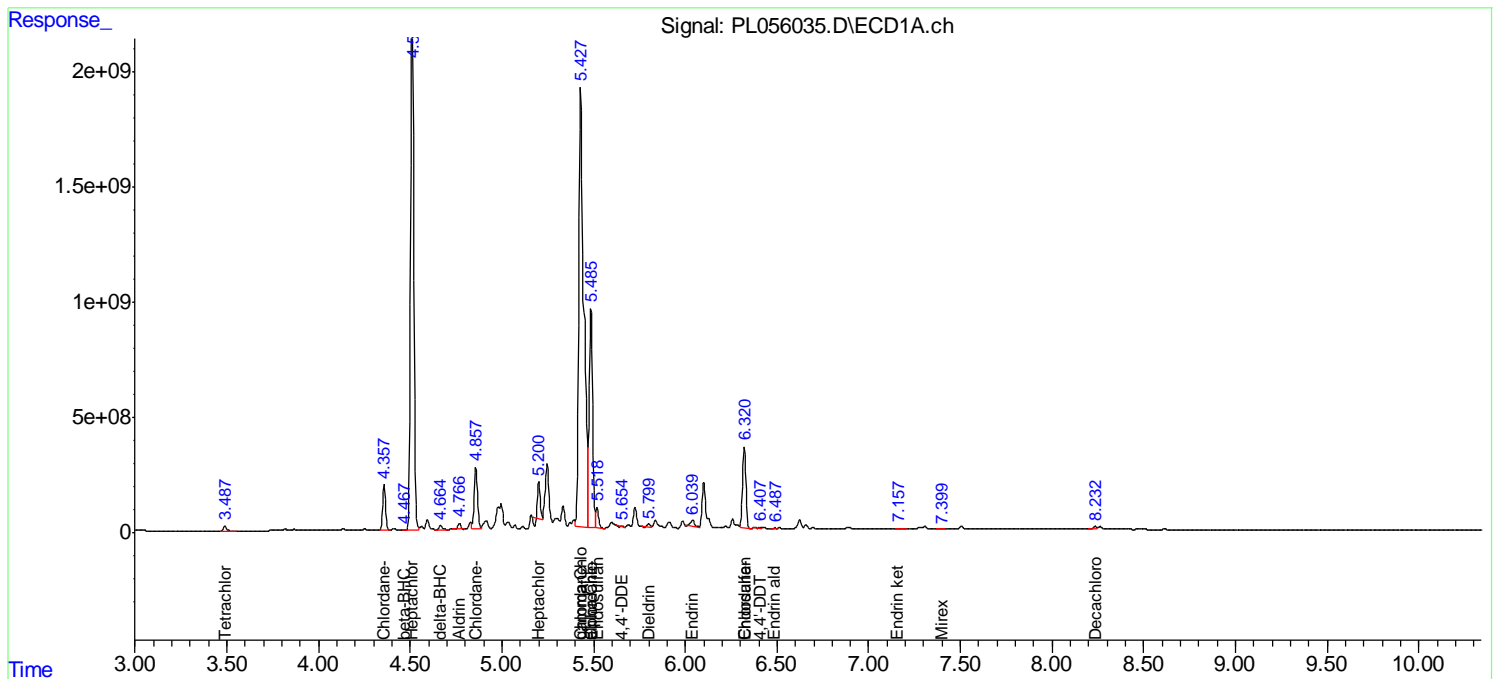
(f)=RT Delta > 1/2 Window (#)=Amounts differ by > 25% (m)=manual int.

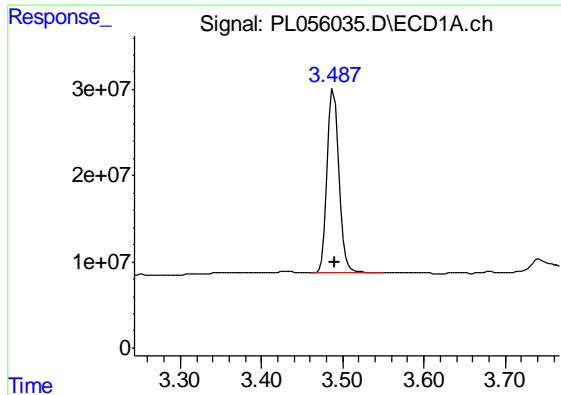
Data Path : Z:\pestpcbsrv\HPCHEM1\ECD_L\Data\PL012420\
 Data File : PL056035.D
 Signal(s) : Signal #1: ECD1A.ch Signal #2: ECD2B.ch
 Acq On : 24 Jan 2020 15:31
 Operator : AJ\MA
 Sample : L1246-01
 Misc :
 ALS Vial : 15 Sample Multiplier: 1

Instrument :
 ECD_L
 ClientSampled :
 SP-1

Integration File signal 1: autoint1.e
 Integration File signal 2: autoint2.e
 Quant Time: Jan 24 22:18:47 2020
 Quant Method : Z:\pestpcbsrv\HPCHEM1\ECD_L\methods\PL012020.M
 Quant Title : GC Extractables
 QLast Update : Tue Jan 21 02:21:03 2020
 Response via : Initial Calibration
 Integrator: ChemStation

Volume Inj. : 1 µl
 Signal #1 Phase : ZB-MR2 Signal #2 Phase: ZB-MR1
 Signal #1 Info : 30M x 0.32mm x0.2 Signal #2 Info : 30M x 0.32mm x0.5µm

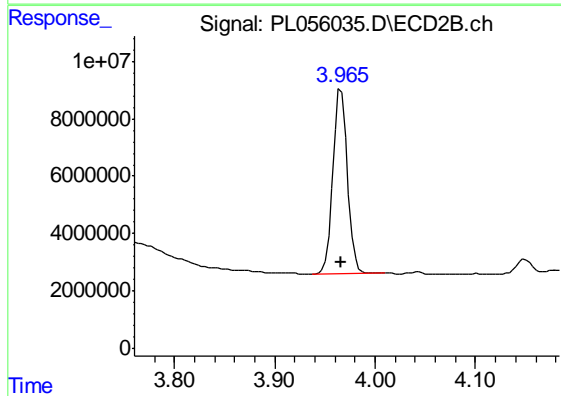




#1 Tetrachloro-m-xylene

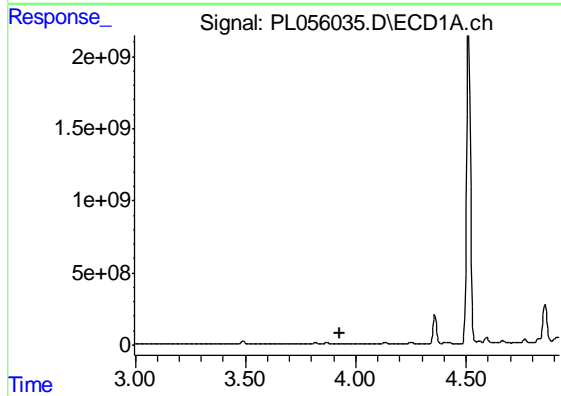
R.T.: 3.489 min
 Delta R.T.: -0.001 min
 Response: 211095540
 Conc: 22.02 ng/ml

Instrument :
 ECD_L
 ClientSampled :
 SP-1



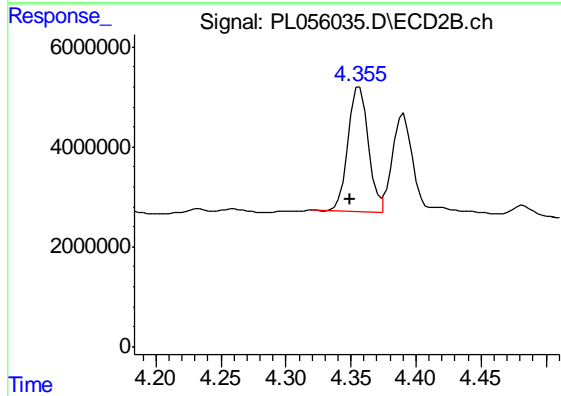
#1 Tetrachloro-m-xylene

R.T.: 3.966 min
 Delta R.T.: 0.000 min
 Response: 64670029
 Conc: 22.88 ng/ml



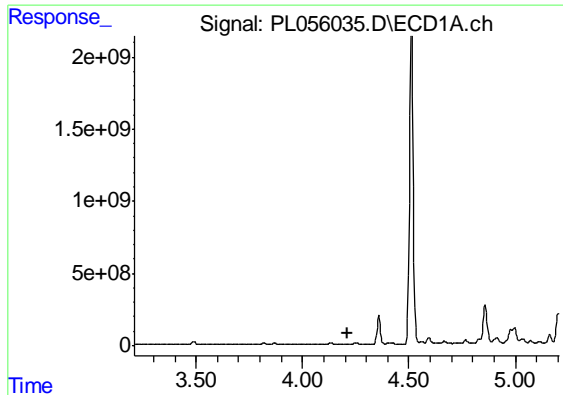
#2 alpha-BHC

R.T.: 0.000 min
 Exp R.T. : 3.927 min
 Response: 0
 Conc: N.D.



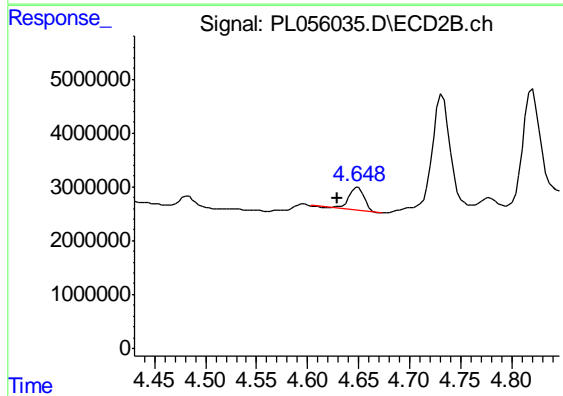
#2 alpha-BHC

R.T.: 4.357 min
 Delta R.T.: 0.007 min
 Response: 26939638
 Conc: 6.35 ng/ml

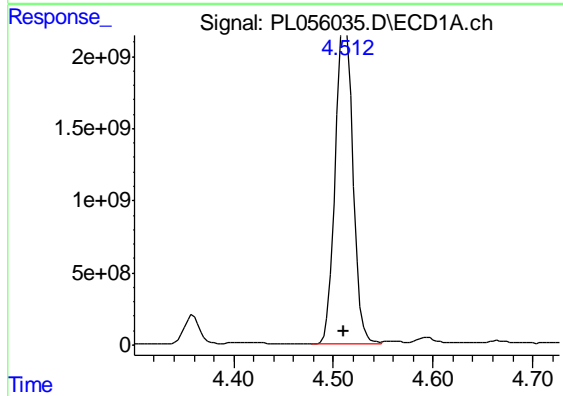


#3 gamma-BHC (Lindane)
 R.T.: 4.215 min
 Delta R.T.: 0.006 min
 Response: -1988301
 Conc: N.D.

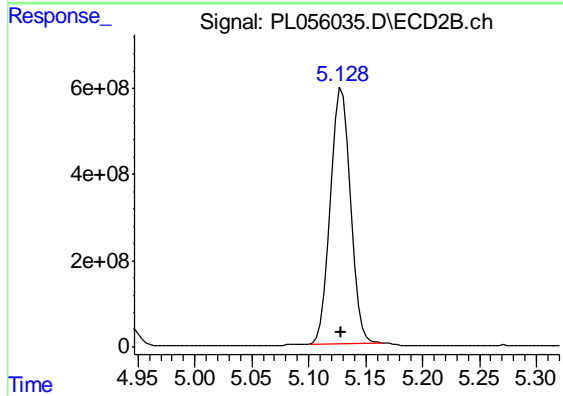
Instrument :
 ECD_L
 ClientSampled :
 SP-1



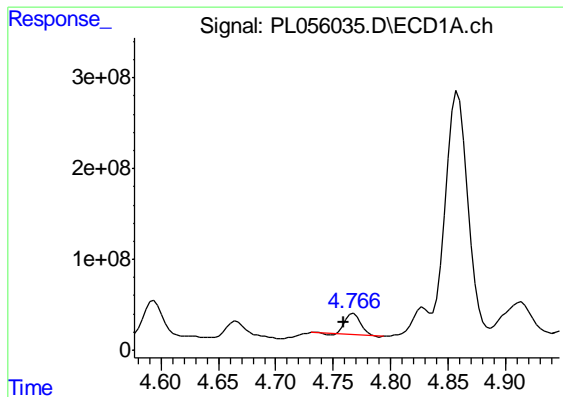
#3 gamma-BHC (Lindane)
 R.T.: 4.649 min
 Delta R.T.: 0.020 min
 Response: 4692478
 Conc: 1.18 ng/ml



#4 Heptachlor
 R.T.: 4.512 min
 Delta R.T.: 0.002 min
 Response: 23392398368
 Conc: 1566.55 ng/ml



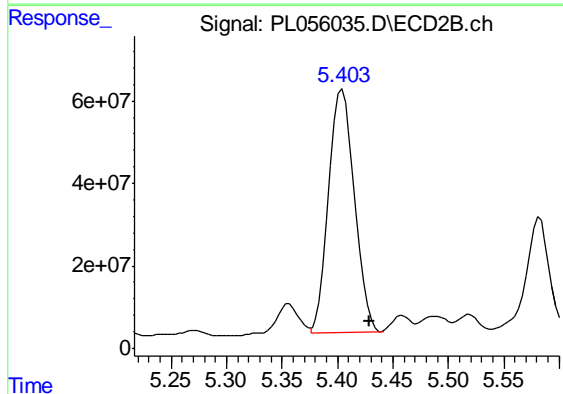
#4 Heptachlor
 R.T.: 5.129 min
 Delta R.T.: 0.000 min
 Response: 7231338648
 Conc: 2138.59 ng/ml



#5 Aldrin

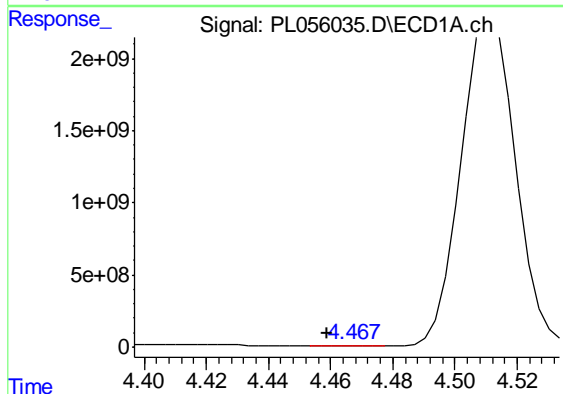
R.T.: 4.768 min
 Delta R.T.: 0.008 min
 Response: 244209537
 Conc: 16.69 ng/ml

Instrument :
 ECD_L
 ClientSampled :
 SP-1



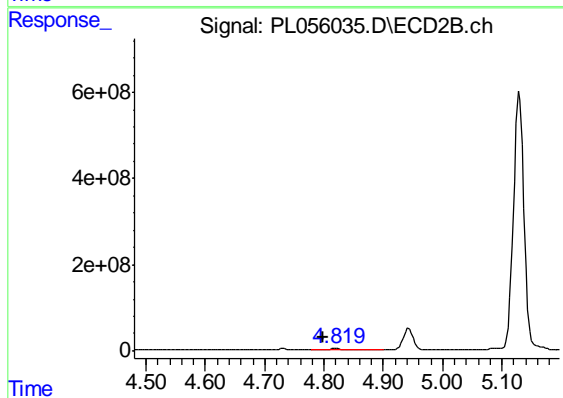
#5 Aldrin

R.T.: 5.404 min
 Delta R.T.: -0.025 min
 Response: 959839717
 Conc: 280.01 ng/ml



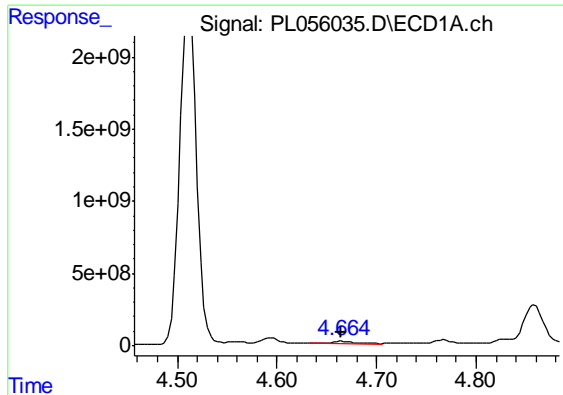
#6 beta-BHC

R.T.: 4.468 min
 Delta R.T.: 0.009 min
 Response: 1463553
 Conc: 0.23 ng/ml



#6 beta-BHC

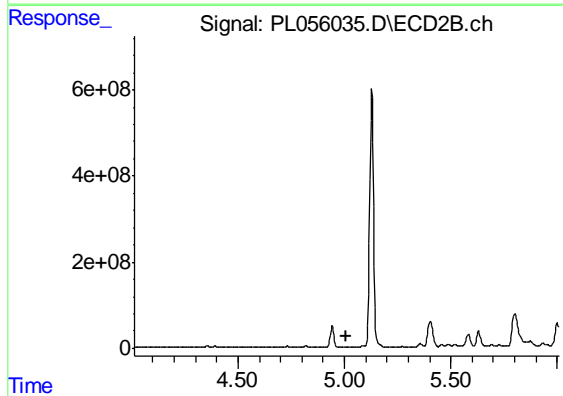
R.T.: 4.821 min
 Delta R.T.: 0.023 min
 Response: 28307705
 Conc: 17.84 ng/ml



#7 delta-BHC

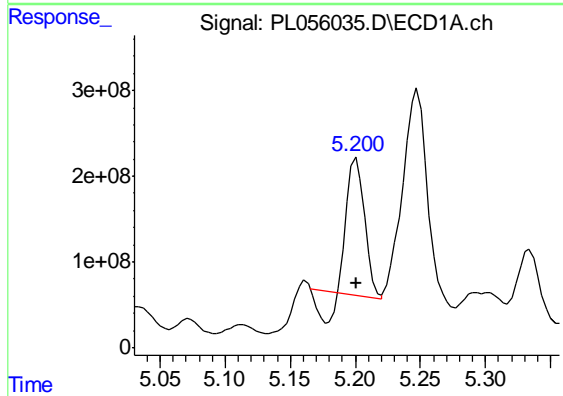
R.T.: 4.665 min
 Delta R.T.: 0.001 min
 Response: 211108914
 Conc: 14.40 ng/ml

Instrument :
 ECD_L
 ClientSampled :
 SP-1



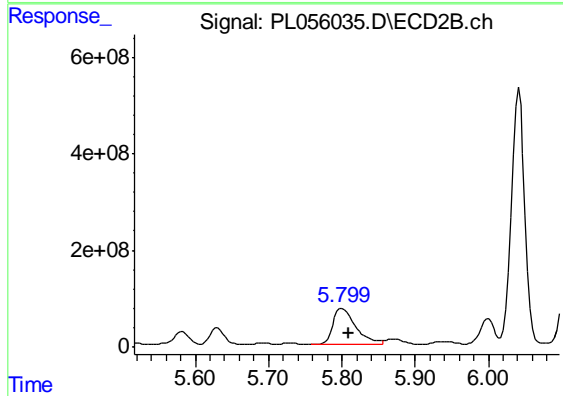
#7 delta-BHC

R.T.: 5.014 min
 Delta R.T.: 0.002 min
 Response: -697716
 Conc: N.D.



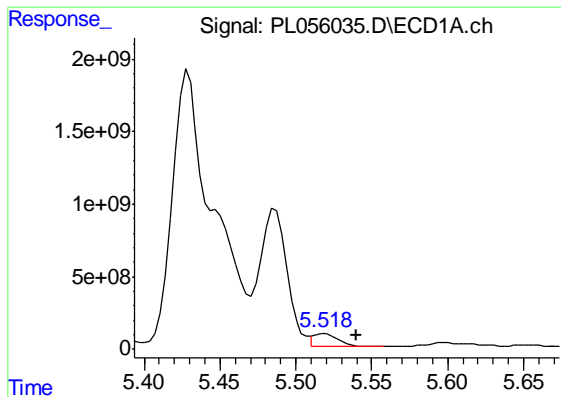
#8 Heptachlor epoxide

R.T.: 5.201 min
 Delta R.T.: 0.000 min
 Response: 1305432758
 Conc: 94.64 ng/ml



#8 Heptachlor epoxide

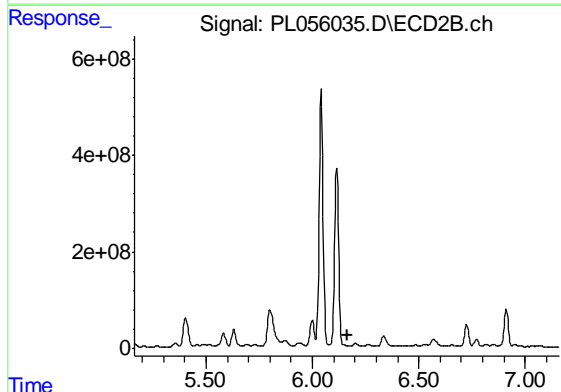
R.T.: 5.801 min
 Delta R.T.: -0.010 min
 Response: 1632963178
 Conc: 546.49 ng/ml



#9 Endosulfan I

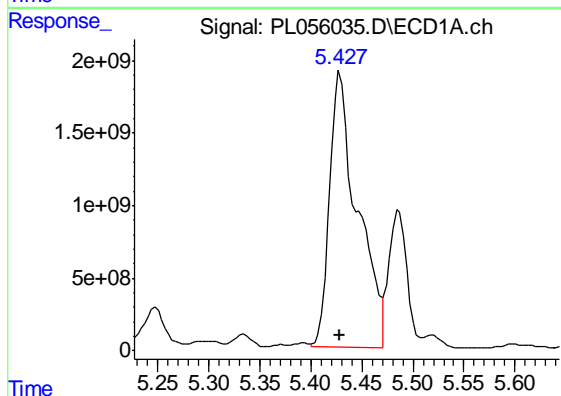
R.T.: 5.519 min
 Delta R.T.: -0.021 min
 Response: 1060407250
 Conc: 81.73 ng/ml

Instrument :
 ECD_L
 ClientSampled :
 SP-1



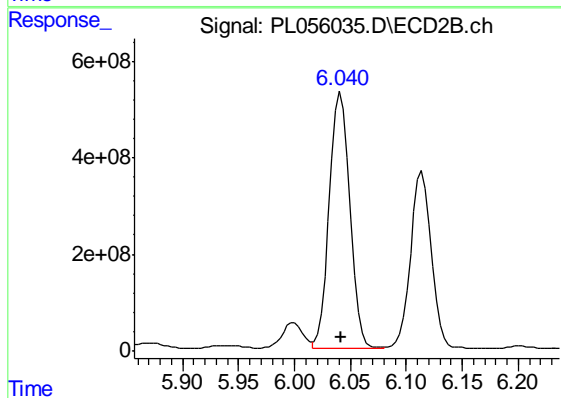
#9 Endosulfan I

R.T.: 0.000 min
 Exp R.T. : 6.162 min
 Response: 0
 Conc: N.D.



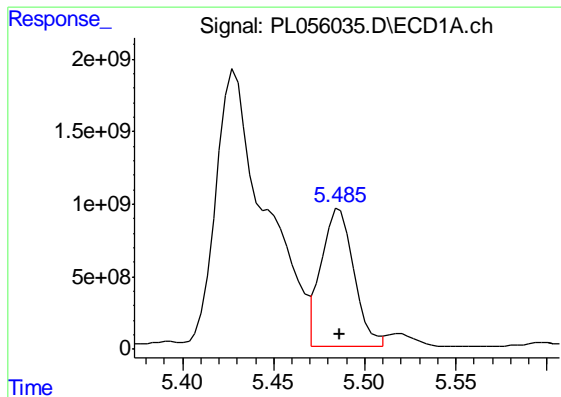
#10 gamma-Chlordane

R.T.: 5.431 min
 Delta R.T.: 0.003 min
 Response: 32148163242
 Conc: 2291.49 ng/ml



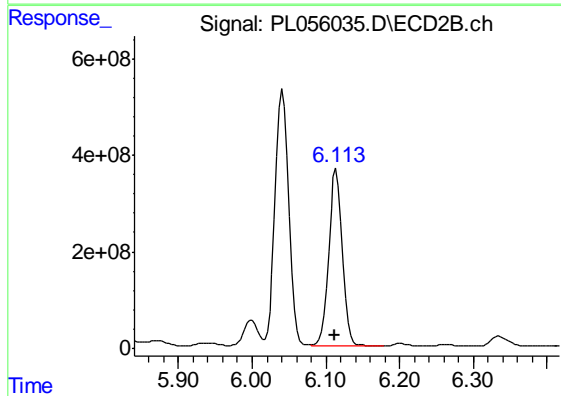
#10 gamma-Chlordane

R.T.: 6.042 min
 Delta R.T.: 0.000 min
 Response: 6801888739
 Conc: 2205.69 ng/ml

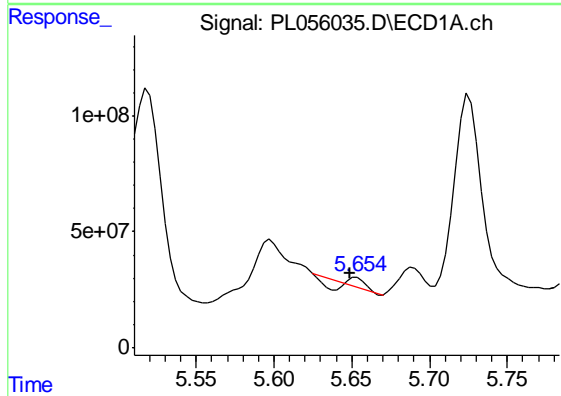


#11 alpha-Chlordane
 R.T.: 5.486 min
 Delta R.T.: 0.000 min
 Response: 12011382789
 Conc: 868.85 ng/ml

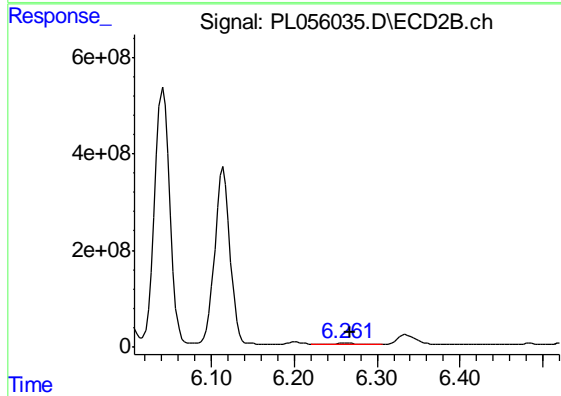
Instrument :
 ECD_L
 ClientSampled :
 SP-1



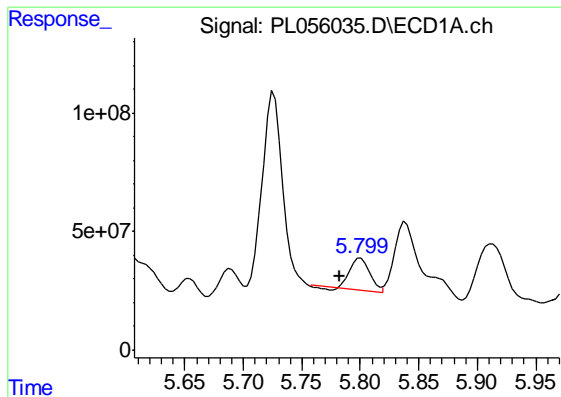
#11 alpha-Chlordane
 R.T.: 6.114 min
 Delta R.T.: 0.002 min
 Response: 4804197041
 Conc: 1555.98 ng/ml



#12 4,4'-DDE
 R.T.: 5.654 min
 Delta R.T.: 0.005 min
 Response: 13348950
 Conc: 1.02 ng/ml



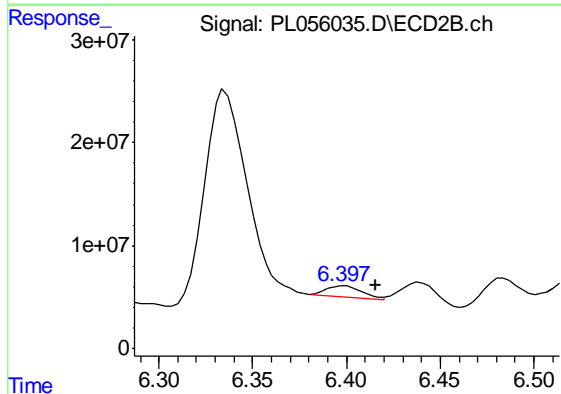
#12 4,4'-DDE
 R.T.: 6.263 min
 Delta R.T.: -0.005 min
 Response: 15894954
 Conc: 5.43 ng/ml



#13 Dieldrin

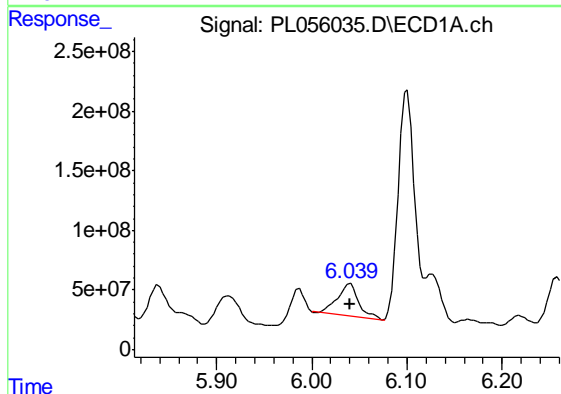
R.T.: 5.800 min
 Delta R.T.: 0.017 min
 Response: 153459252
 Conc: 11.09 ng/ml

Instrument :
 ECD_L
 ClientSampled :
 SP-1



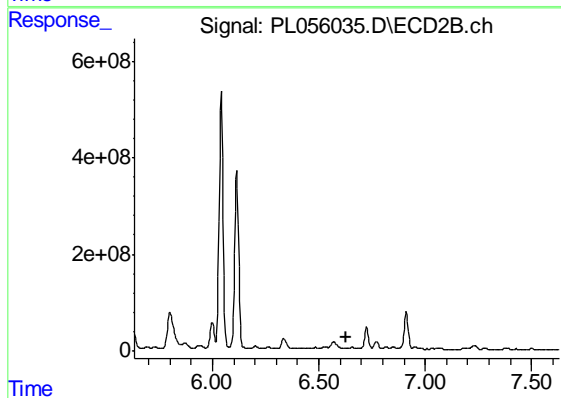
#13 Dieldrin

R.T.: 6.399 min
 Delta R.T.: -0.017 min
 Response: 14356888
 Conc: 4.75 ng/ml



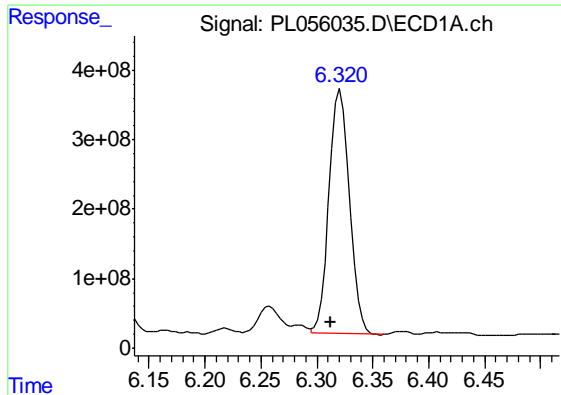
#14 Endrin

R.T.: 6.040 min
 Delta R.T.: 0.000 min
 Response: 413325961
 Conc: 32.72 ng/ml



#14 Endrin

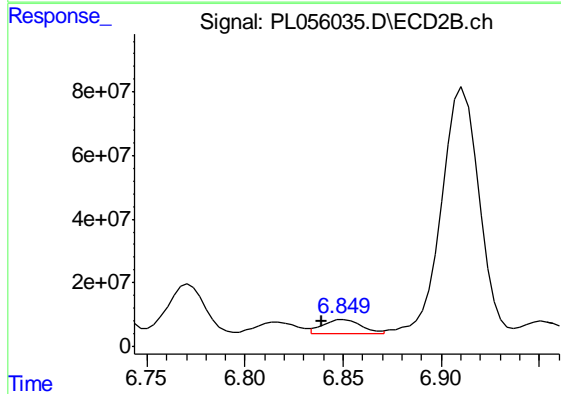
R.T.: 6.656 min
 Delta R.T.: 0.024 min
 Response: -11085322
 Conc: N.D.



#15 Endosulfan II

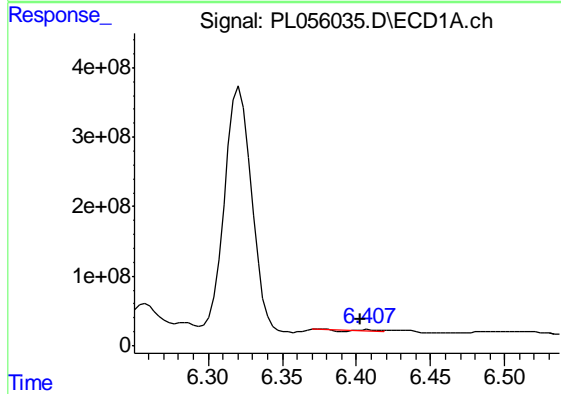
R.T.: 6.321 min
 Delta R.T.: 0.009 min
 Response: 4439778939
 Conc: 397.57 ng/ml

Instrument :
 ECD_L
 ClientSampled :
 SP-1



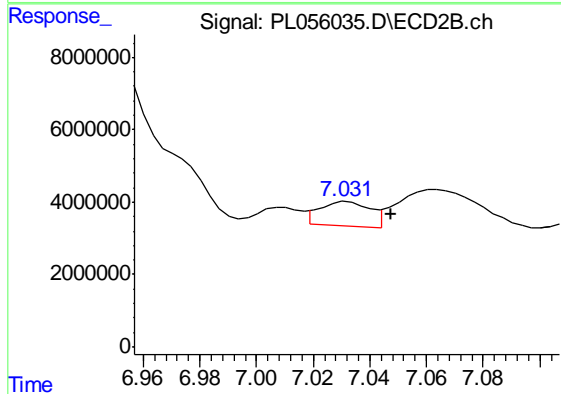
#15 Endosulfan II

R.T.: 6.851 min
 Delta R.T.: 0.011 min
 Response: 58795141
 Conc: 21.92 ng/ml



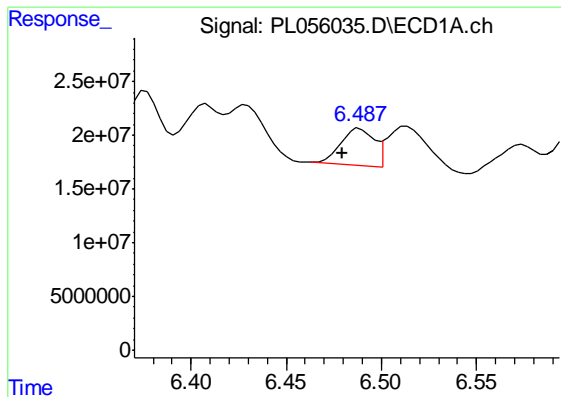
#17 4,4'-DDT

R.T.: 6.408 min
 Delta R.T.: 0.005 min
 Response: 10877043
 Conc: 1.07 ng/ml



#17 4,4'-DDT

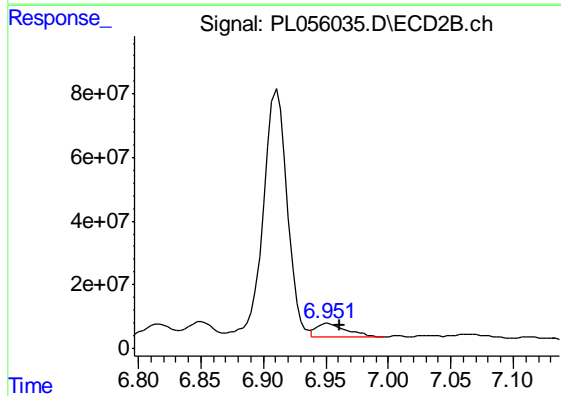
R.T.: 7.032 min
 Delta R.T.: -0.015 min
 Response: 8129955
 Conc: 3.60 ng/ml



#18 Endrin aldehyde

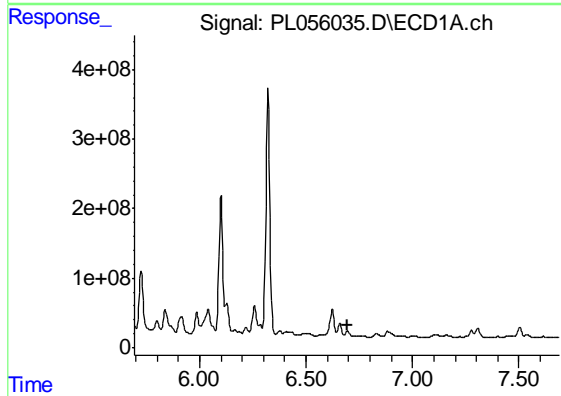
R.T.: 6.489 min
 Delta R.T.: 0.009 min
 Response: 43562631
 Conc: 4.19 ng/ml

Instrument :
 ECD_L
 ClientSampled :
 SP-1



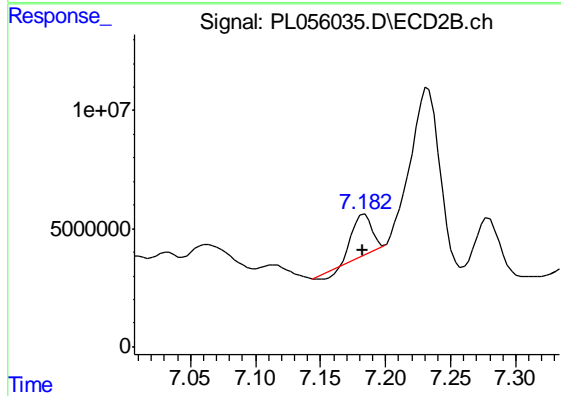
#18 Endrin aldehyde

R.T.: 6.952 min
 Delta R.T.: -0.009 min
 Response: 70579598
 Conc: 31.27 ng/ml



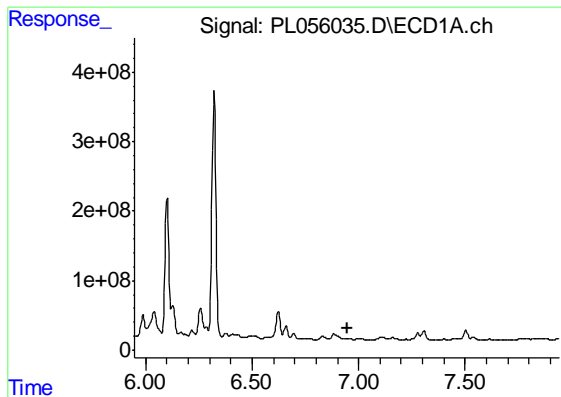
#19 Endosulfan Sulfate

R.T.: 6.696 min
 Delta R.T.: 0.004 min
 Response: -82458277
 Conc: N.D.



#19 Endosulfan Sulfate

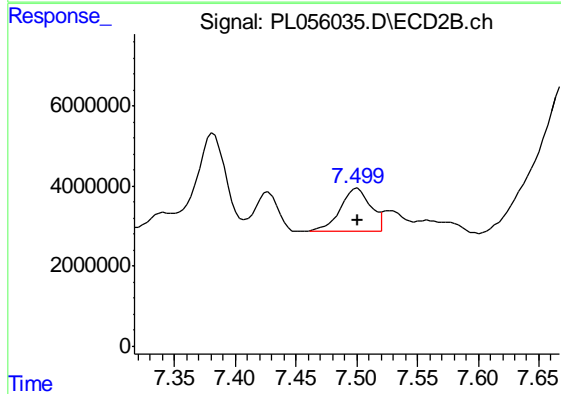
R.T.: 7.184 min
 Delta R.T.: 0.001 min
 Response: 15297293
 Conc: 6.18 ng/ml



#20 Methoxychlor

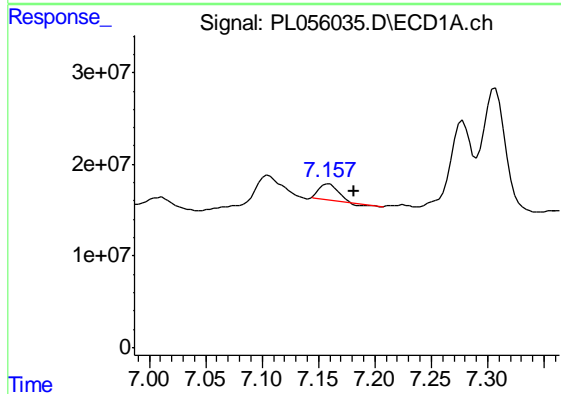
R.T.: 0.000 min
 Exp R.T. : 6.946 min
 Response: 0
 Conc: N.D.

Instrument :
 ECD_L
 ClientSampled :
 SP-1



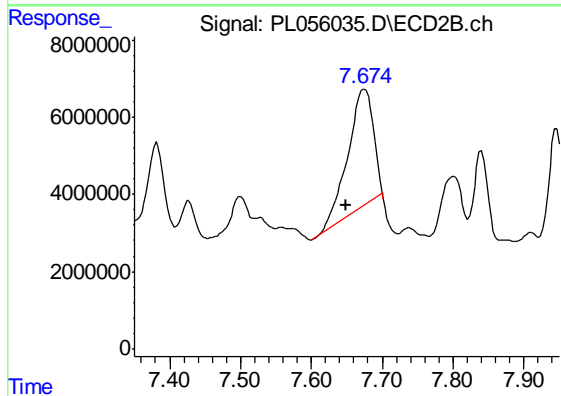
#20 Methoxychlor

R.T.: 7.500 min
 Delta R.T.: 0.000 min
 Response: 18572194
 Conc: 15.56 ng/ml



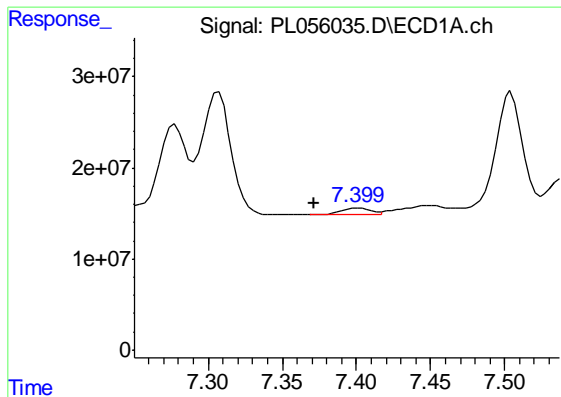
#21 Endrin ketone

R.T.: 7.159 min
 Delta R.T.: -0.023 min
 Response: 18331845
 Conc: 1.46 ng/ml



#21 Endrin ketone

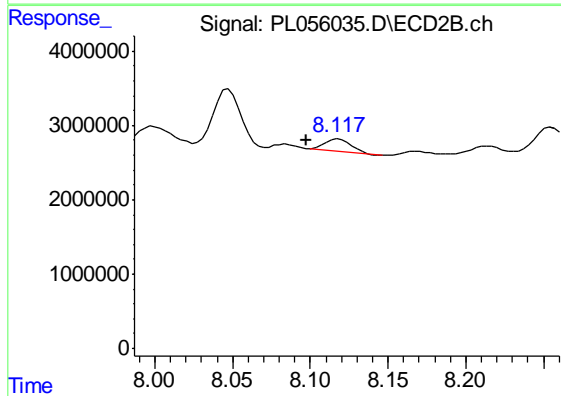
R.T.: 7.675 min
 Delta R.T.: 0.027 min
 Response: 75366518
 Conc: 28.54 ng/ml



#22 Mirex

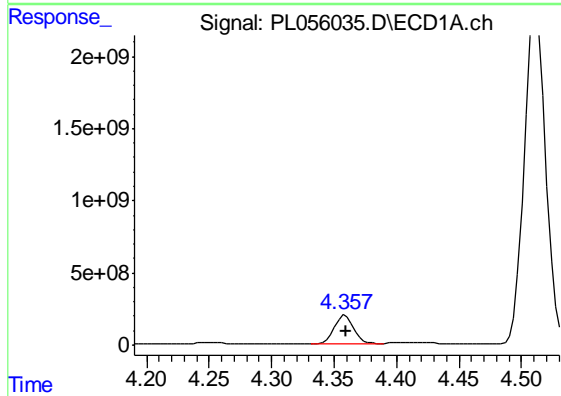
R.T.: 7.401 min
 Delta R.T.: 0.030 min
 Response: 10168204
 Conc: 1.45 ng/ml

Instrument :
 ECD_L
 ClientSampled :
 SP-1



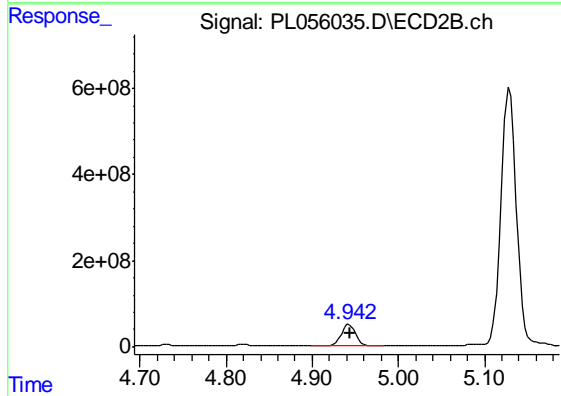
#22 Mirex

R.T.: 8.118 min
 Delta R.T.: 0.021 min
 Response: 1543146
 Conc: 0.85 ng/ml



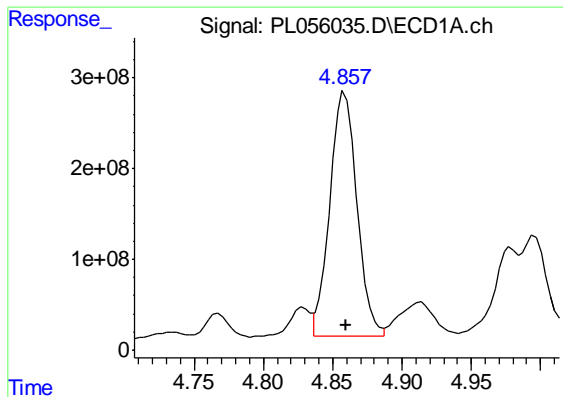
#23 Chlordane-1

R.T.: 4.359 min
 Delta R.T.: 0.000 min
 Response: 2084242469
 Conc: 5684.69 ng/ml



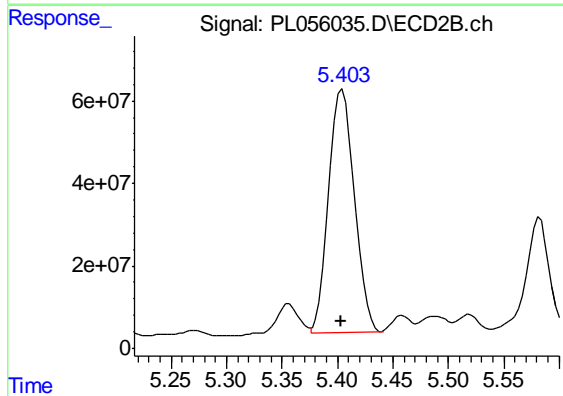
#23 Chlordane-1

R.T.: 4.943 min
 Delta R.T.: 0.000 min
 Response: 565827566
 Conc: 5373.59 ng/ml

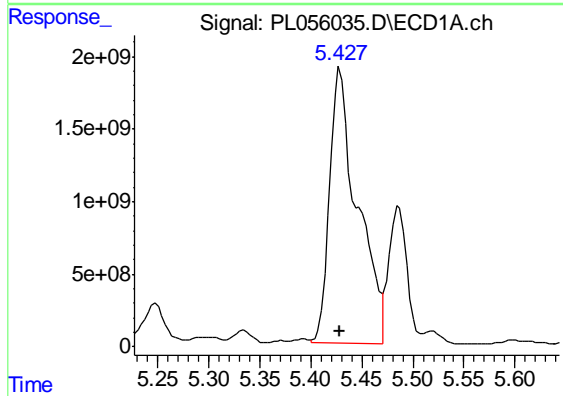


#24 Chlordane-2
 R.T.: 4.859 min
 Delta R.T.: -0.001 min
 Response: 3701611085
 Conc: 8553.78 ng/ml

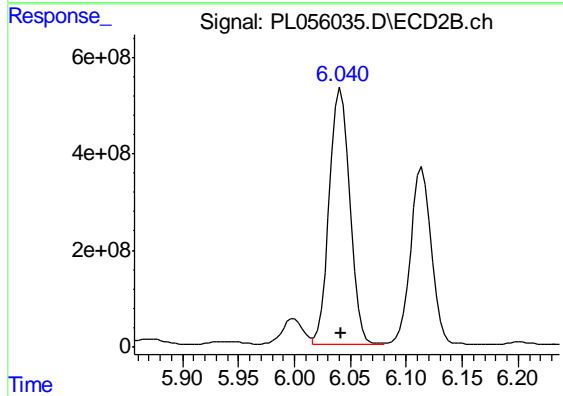
Instrument :
 ECD_L
 ClientSampled :
 SP-1



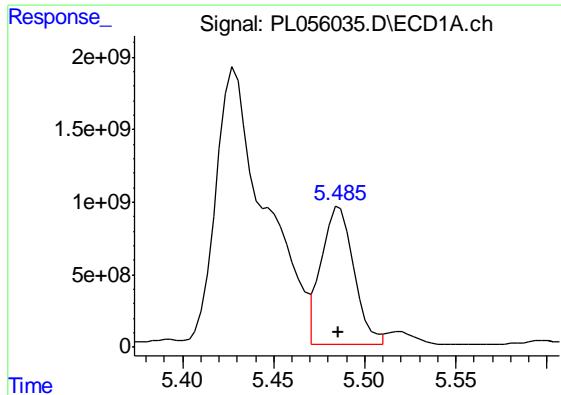
#24 Chlordane-2
 R.T.: 5.404 min
 Delta R.T.: 0.001 min
 Response: 959839717
 Conc: 8706.31 ng/ml



#25 Chlordane-3
 R.T.: 5.431 min
 Delta R.T.: 0.002 min
 Response: 32148163242
 Conc: 25815.79 ng/ml



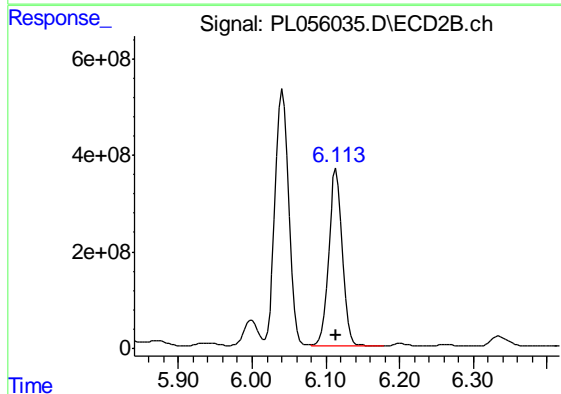
#25 Chlordane-3
 R.T.: 6.042 min
 Delta R.T.: 0.000 min
 Response: 6801888739
 Conc: 17136.80 ng/ml



#26 Chlordane-4

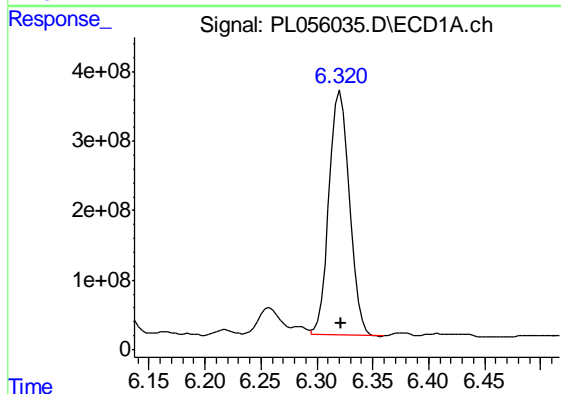
R.T.: 5.486 min
 Delta R.T.: 0.000 min
 Response: 12011382789
 Conc: 11648.55 ng/ml

Instrument :
 ECD_L
 ClientSampled :
 SP-1



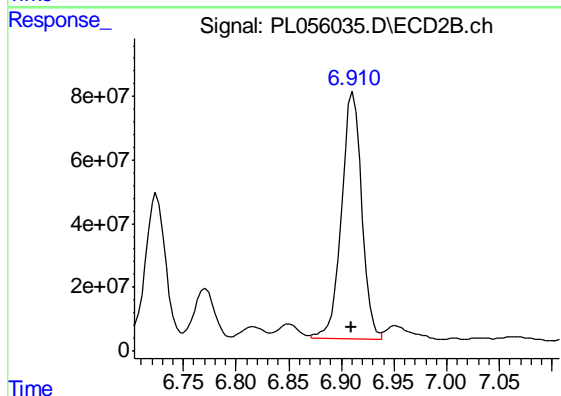
#26 Chlordane-4

R.T.: 6.114 min
 Delta R.T.: 0.000 min
 Response: 4804197041
 Conc: 10234.22 ng/ml



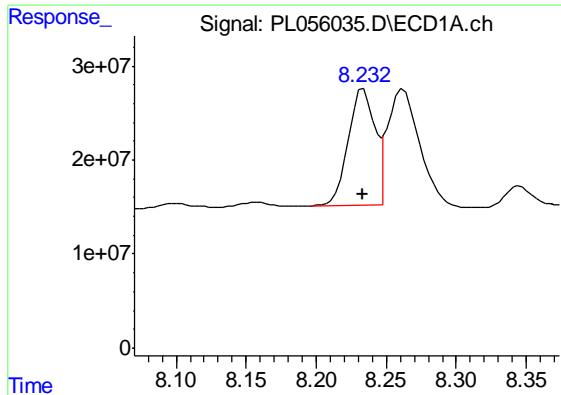
#27 Chlordane-5

R.T.: 6.321 min
 Delta R.T.: 0.000 min
 Response: 4439778939
 Conc: 11351.59 ng/ml



#27 Chlordane-5

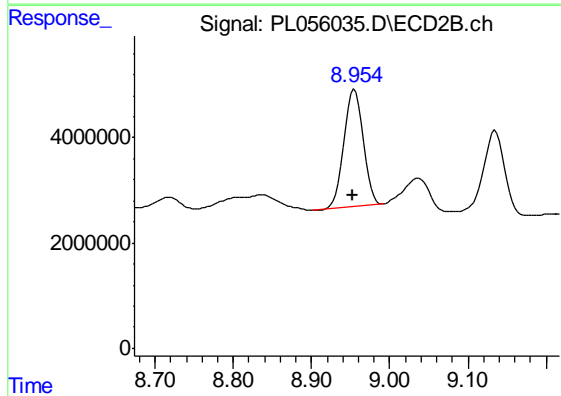
R.T.: 6.911 min
 Delta R.T.: 0.001 min
 Response: 1027269745
 Conc: 12538.98 ng/ml



#28 Decachlorobiphenyl

R.T.: 8.234 min
Delta R.T.: 0.000 min
Response: 166133063
Conc: 15.89 ng/ml

Instrument :
ECD_L
ClientSampleId :
SP-1



#28 Decachlorobiphenyl

R.T.: 8.955 min
Delta R.T.: 0.003 min
Response: 38644256
Conc: 16.87 ng/ml