

Data Path : Z:\pestpcbsrv\HPCHEM1\ECD_L\Data\PL012420\
 Data File : PL056055.D
 Signal(s) : Signal #1: ECD1A.ch Signal #2: ECD2B.ch
 Acq On : 24 Jan 2020 20:32
 Operator : AJ\MA
 Sample : L1007-18
 Misc :
 ALS Vial : 33 Sample Multiplier: 1

Instrument :
 ECD_L
 ClientSampleId :
 JC-03-012320-B

Integration File signal 1: autoint1.e
 Integration File signal 2: autoint2.e
 Quant Time: Jan 24 22:25:44 2020
 Quant Method : Z:\pestpcbsrv\HPCHEM1\ECD_L\methods\PL012020.M
 Quant Title : GC Extractables
 QLast Update : Tue Jan 21 02:21:03 2020
 Response via : Initial Calibration
 Integrator: ChemStation

Volume Inj. : 1 µl
 Signal #1 Phase : ZB-MR2 Signal #2 Phase: ZB-MR1
 Signal #1 Info : 30M x 0.32mm x0.2 Signal #2 Info : 30M x 0.32mm x0.5µm

Compound	RT#1	RT#2	Resp#1	Resp#2	ng/ml	ng/ml

System Monitoring Compounds						
1) SA Tetrachlo...	3.490	3.966	195.3E6	60916581	20.380	21.554
28) SA Decachlor...	8.232	8.952	195.8E6	43915221	18.725	19.169
Target Compounds						
2) A alpha-BHC	3.926	0.000	12344335	0	0.744	N.D. #
4) MA Heptachlor	4.532f	0.000	13135022	0	0.880	N.D. #
5) MB Aldrin	4.758	0.000	7985703	0	0.546	N.D. #
6) B beta-BHC	4.467	0.000	6587604	0	1.027	N.D. #
8) B Heptachlo...	5.204	0.000	7138659	0	0.518	N.D. #
9) A Endosulfan I	5.547	0.000	1492371	0	0.115	N.D. #
10) B gamma-Chl...	5.421	0.000	25299508	0	1.803	N.D. #
11) B alpha-Chl...	5.479	0.000	9070664	0	0.656	N.D. #
16) A 4,4'-DDD	6.166	0.000	2714489	0	0.273	N.D. #
24) Chlordane-2	4.868	0.000	25662960	0	59.303	N.D. #
25) Chlordane-3	5.421	0.000	25299508	0	20.316	N.D. #
26) Chlordane-4	5.479	0.000	9070664	0	8.797	N.D. #

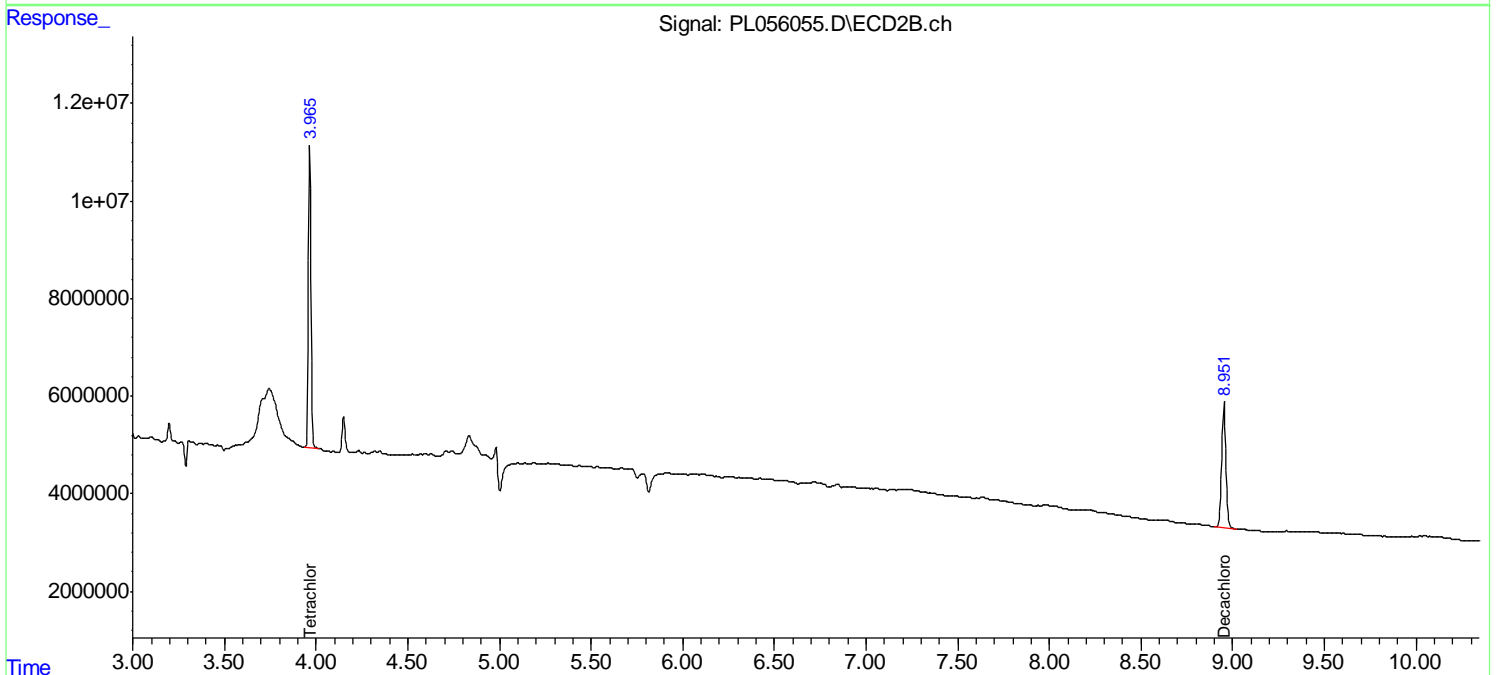
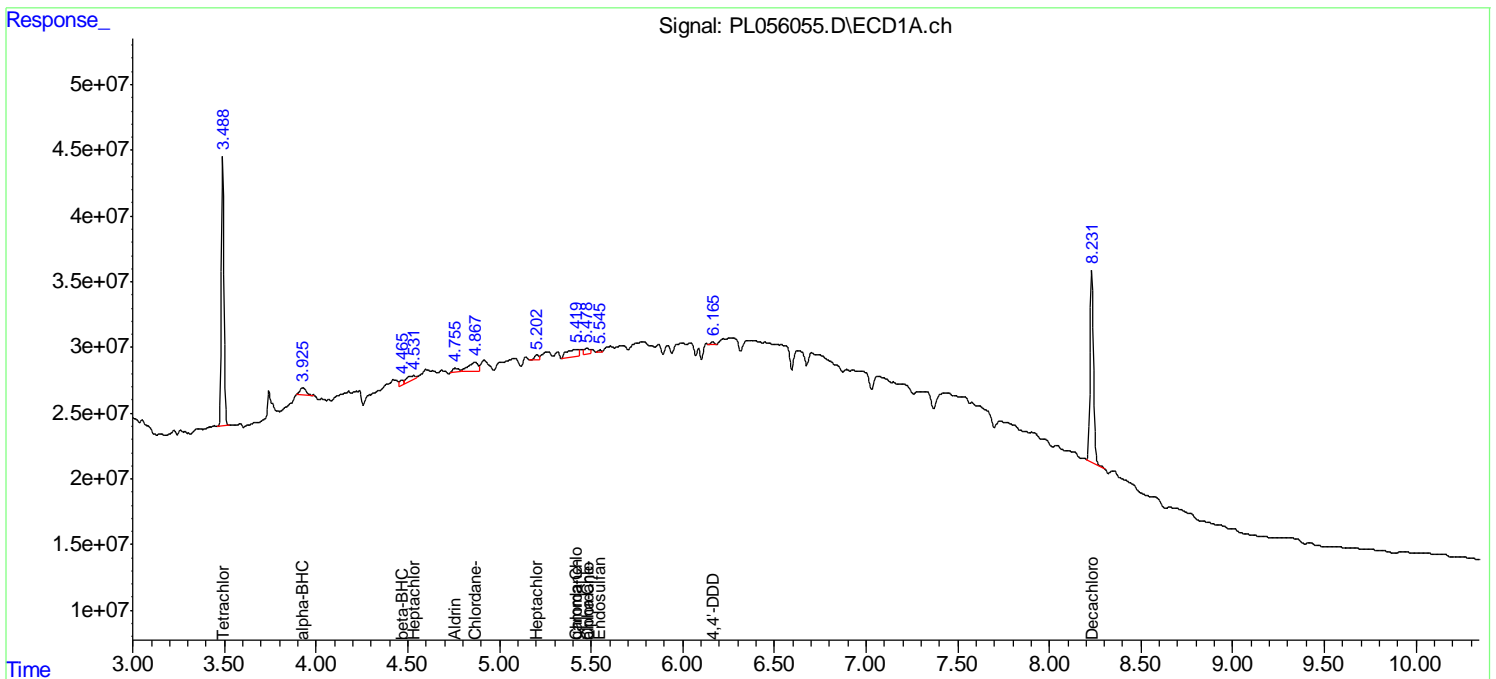
(f)=RT Delta > 1/2 Window (#)=Amounts differ by > 25% (m)=manual int.

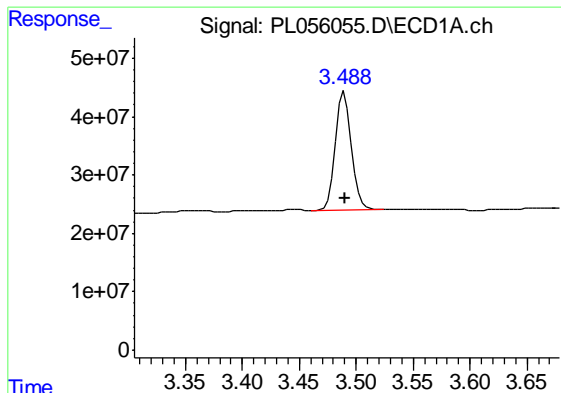
Data Path : Z:\pestpcbsrv\HPCHEM1\ECD_L\Data\PL012420\
 Data File : PL056055.D
 Signal(s) : Signal #1: ECD1A.ch Signal #2: ECD2B.ch
 Acq On : 24 Jan 2020 20:32
 Operator : AJ\MA
 Sample : L1007-18
 Misc :
 ALS Vial : 33 Sample Multiplier: 1

Instrument :
 ECD_L
 ClientSampled :
 JC-03-012320-B

Integration File signal 1: autoint1.e
 Integration File signal 2: autoint2.e
 Quant Time: Jan 24 22:25:44 2020
 Quant Method : Z:\pestpcbsrv\HPCHEM1\ECD_L\methods\PL012020.M
 Quant Title : GC Extractables
 QLast Update : Tue Jan 21 02:21:03 2020
 Response via : Initial Calibration
 Integrator: ChemStation

Volume Inj. : 1 µl
 Signal #1 Phase : ZB-MR2 Signal #2 Phase: ZB-MR1
 Signal #1 Info : 30M x 0.32mm x0.2 Signal #2 Info : 30M x 0.32mm x0.5µm

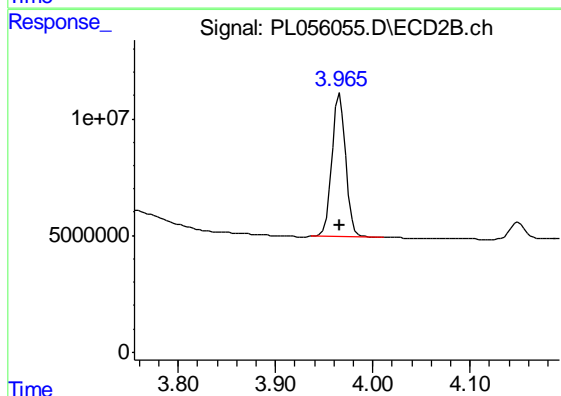




#1 Tetrachloro-m-xylene

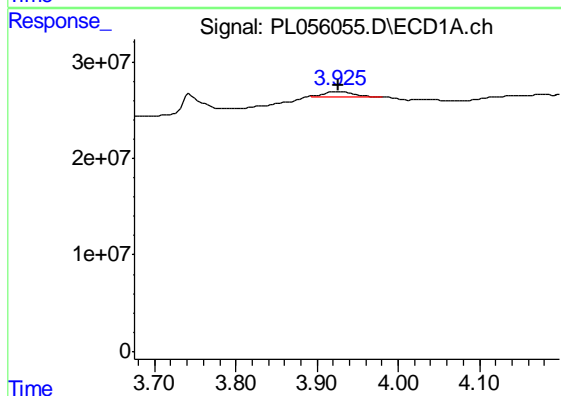
R.T.: 3.490 min
 Delta R.T.: 0.000 min
 Response: 195332120
 Conc: 20.38 ng/ml

Instrument :
 ECD_L
 ClientSampleId :
 JC-03-012320-B



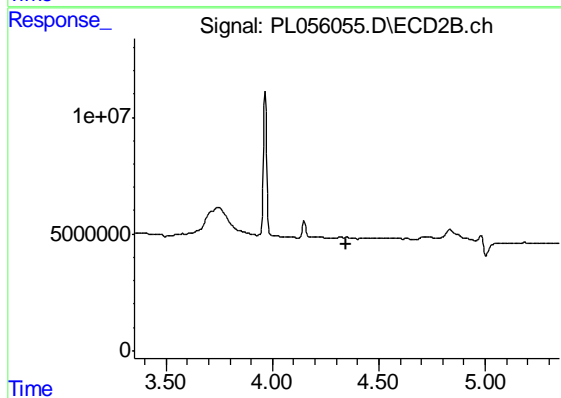
#1 Tetrachloro-m-xylene

R.T.: 3.966 min
 Delta R.T.: 0.000 min
 Response: 60916581
 Conc: 21.55 ng/ml



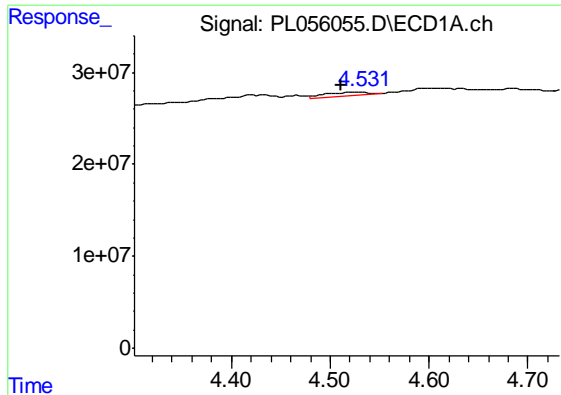
#2 alpha-BHC

R.T.: 3.926 min
 Delta R.T.: 0.000 min
 Response: 12344335
 Conc: 0.74 ng/ml



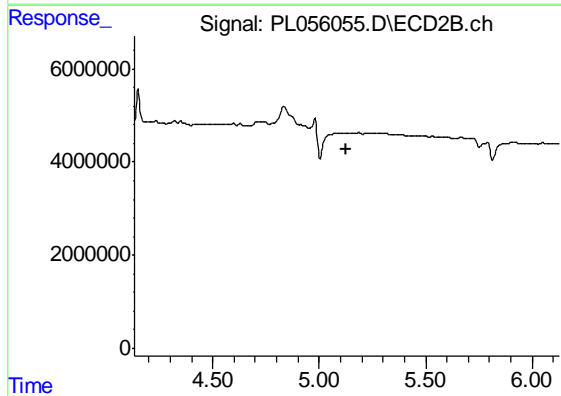
#2 alpha-BHC

R.T.: 0.000 min
 Exp R.T. : 4.350 min
 Response: 0
 Conc: N.D.

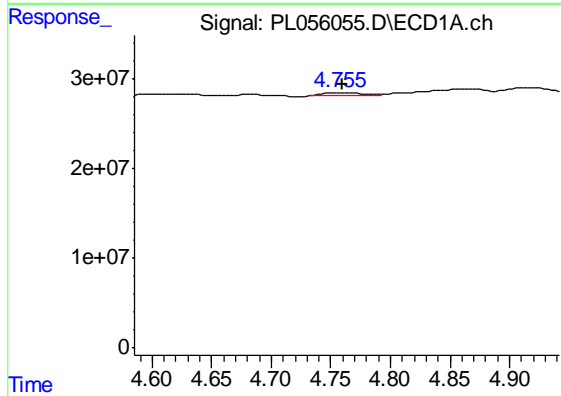


#4 Heptachlor
 R.T.: 4.532 min
 Delta R.T.: 0.022 min
 Response: 13135022
 Conc: 0.88 ng/ml

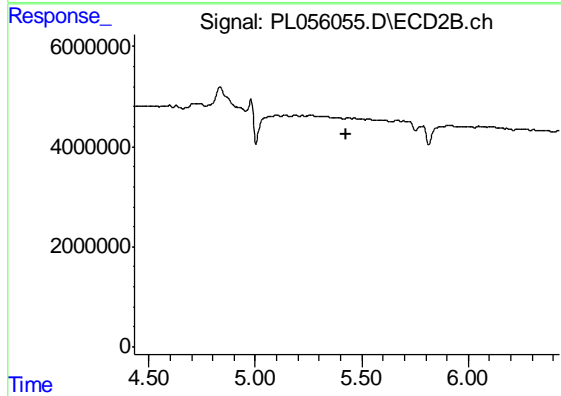
Instrument :
 ECD_L
 ClientSampleId :
 JC-03-012320-B



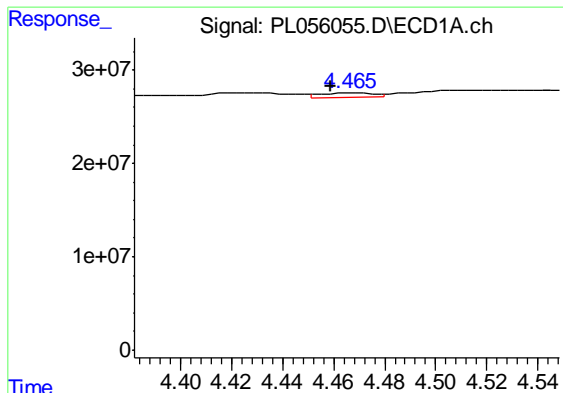
#4 Heptachlor
 R.T.: 0.000 min
 Exp R.T. : 5.129 min
 Response: 0
 Conc: N.D.



#5 Aldrin
 R.T.: 4.758 min
 Delta R.T.: -0.002 min
 Response: 7985703
 Conc: 0.55 ng/ml



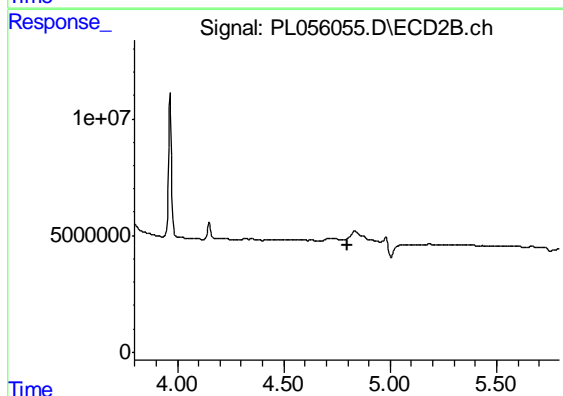
#5 Aldrin
 R.T.: 0.000 min
 Exp R.T. : 5.429 min
 Response: 0
 Conc: N.D.



#6 beta-BHC

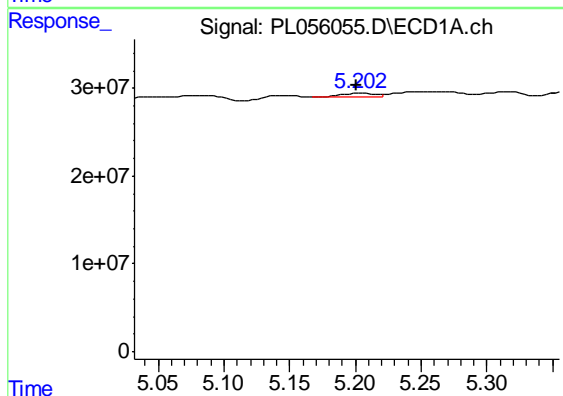
R.T.: 4.467 min
 Delta R.T.: 0.008 min
 Response: 6587604
 Conc: 1.03 ng/ml

Instrument :
 ECD_L
 ClientSampleId :
 JC-03-012320-B



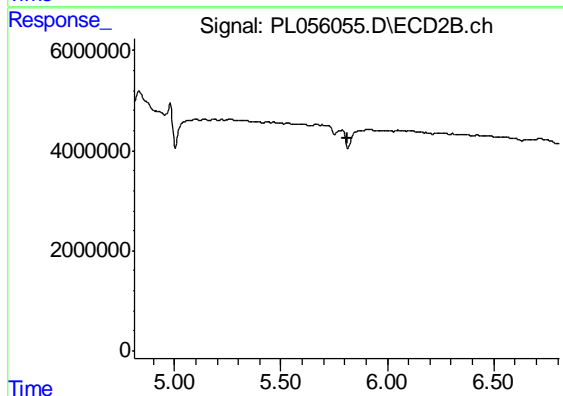
#6 beta-BHC

R.T.: 0.000 min
 Exp R.T. : 4.798 min
 Response: 0
 Conc: N.D.



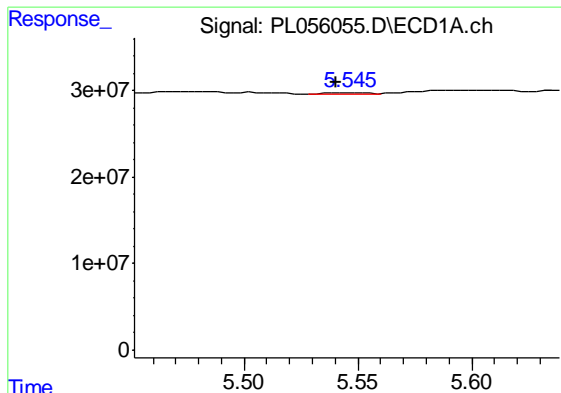
#8 Heptachlor epoxide

R.T.: 5.204 min
 Delta R.T.: 0.003 min
 Response: 7138659
 Conc: 0.52 ng/ml



#8 Heptachlor epoxide

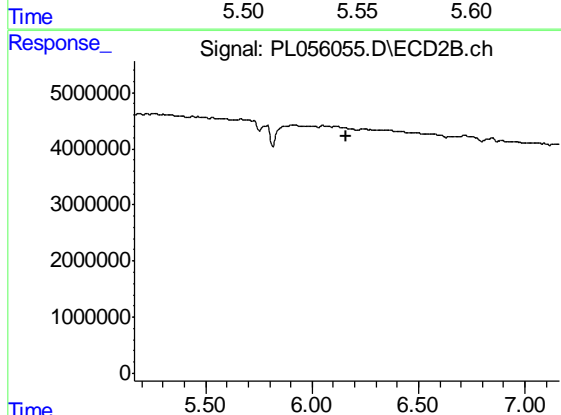
R.T.: 0.000 min
 Exp R.T. : 5.810 min
 Response: 0
 Conc: N.D.



#9 Endosulfan I

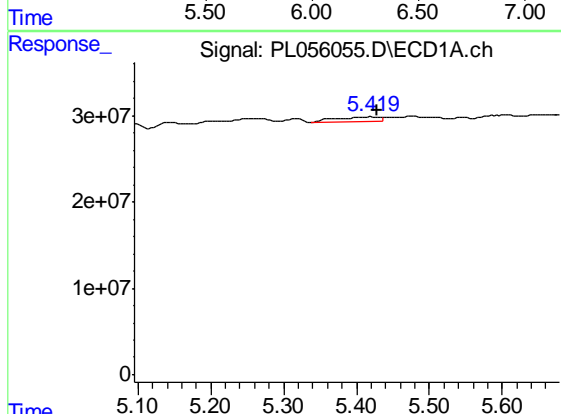
R.T.: 5.547 min
 Delta R.T.: 0.007 min
 Response: 1492371
 Conc: 0.12 ng/ml

Instrument :
 ECD_L
 ClientSampleId :
 JC-03-012320-B



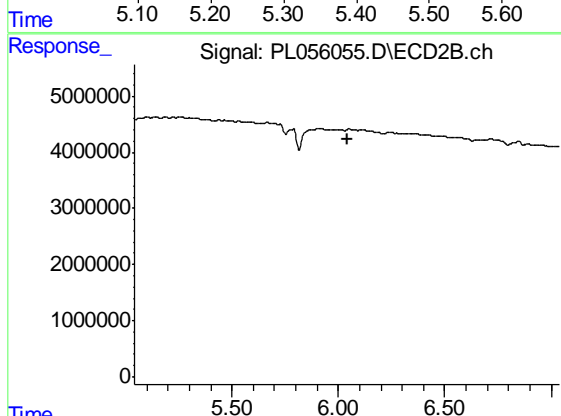
#9 Endosulfan I

R.T.: 0.000 min
 Exp R.T. : 6.162 min
 Response: 0
 Conc: N.D.



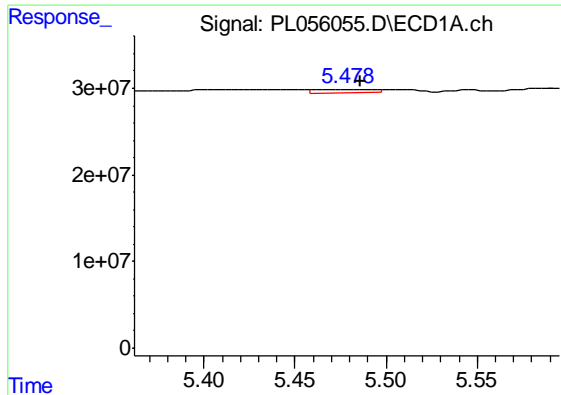
#10 gamma-Chlordane

R.T.: 5.421 min
 Delta R.T.: -0.007 min
 Response: 25299508
 Conc: 1.80 ng/ml



#10 gamma-Chlordane

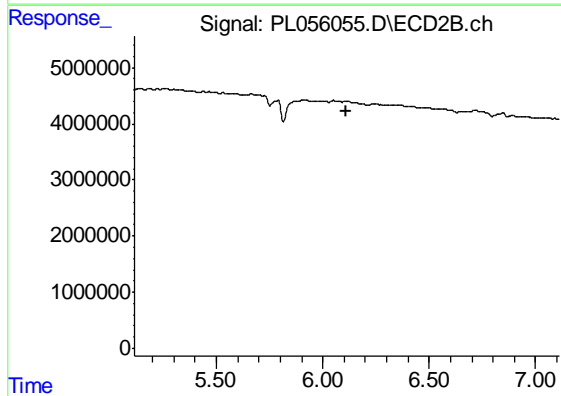
R.T.: 0.000 min
 Exp R.T. : 6.041 min
 Response: 0
 Conc: N.D.



#11 alpha-Chlordane

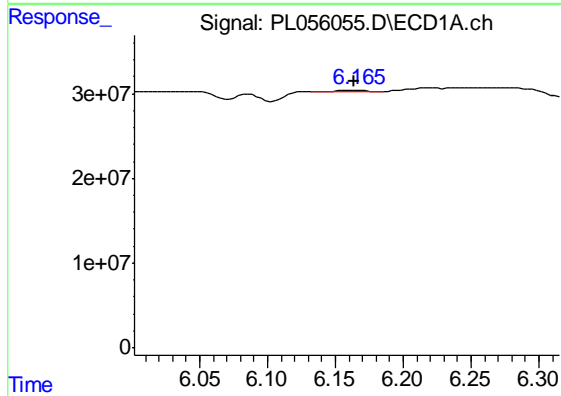
R.T.: 5.479 min
 Delta R.T.: -0.008 min
 Response: 9070664
 Conc: 0.66 ng/ml

Instrument :
 ECD_L
 ClientSampleId :
 JC-03-012320-B



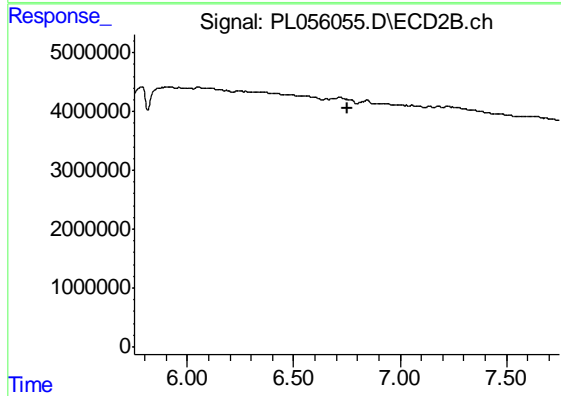
#11 alpha-Chlordane

R.T.: 0.000 min
 Exp R.T. : 6.112 min
 Response: 0
 Conc: N.D.



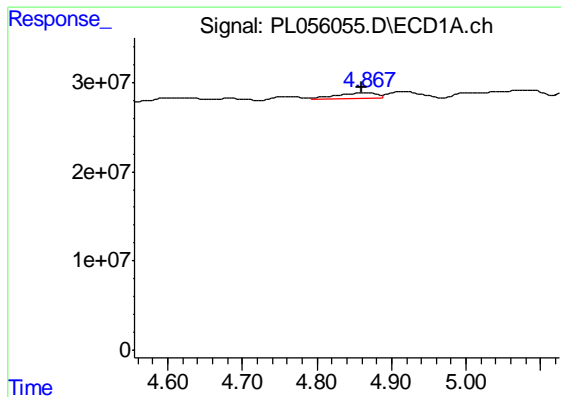
#16 4,4'-DDD

R.T.: 6.166 min
 Delta R.T.: 0.003 min
 Response: 2714489
 Conc: 0.27 ng/ml



#16 4,4'-DDD

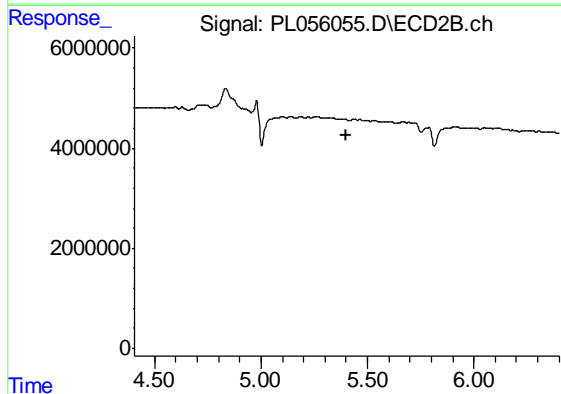
R.T.: 0.000 min
 Exp R.T. : 6.752 min
 Response: 0
 Conc: N.D.



#24 Chlordane-2

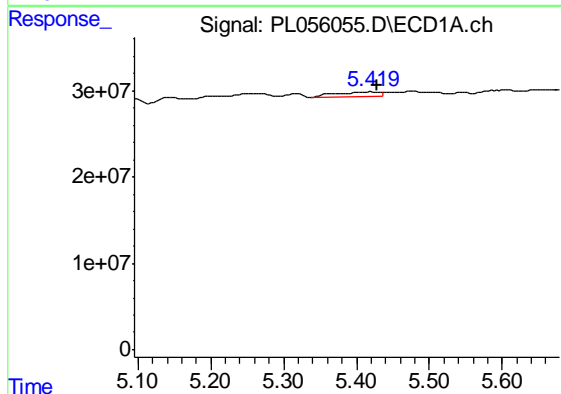
R.T.: 4.868 min
 Delta R.T.: 0.008 min
 Response: 25662960
 Conc: 59.30 ng/ml

Instrument :
 ECD_L
 ClientSampleId :
 JC-03-012320-B



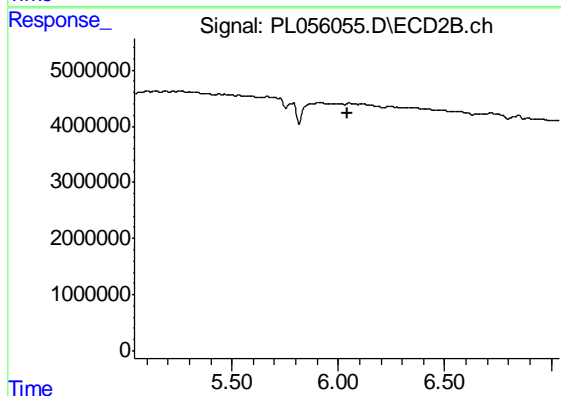
#24 Chlordane-2

R.T.: 0.000 min
 Exp R.T. : 5.403 min
 Response: 0
 Conc: N.D.



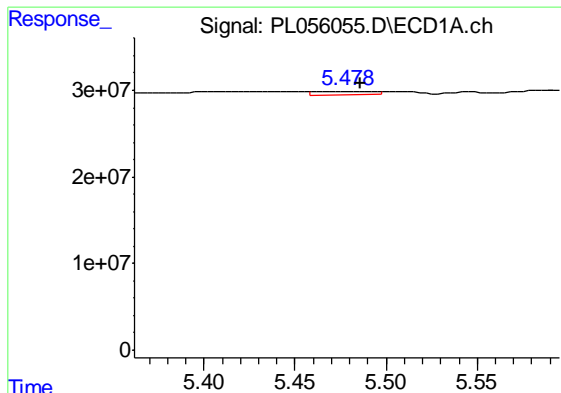
#25 Chlordane-3

R.T.: 5.421 min
 Delta R.T.: -0.008 min
 Response: 25299508
 Conc: 20.32 ng/ml



#25 Chlordane-3

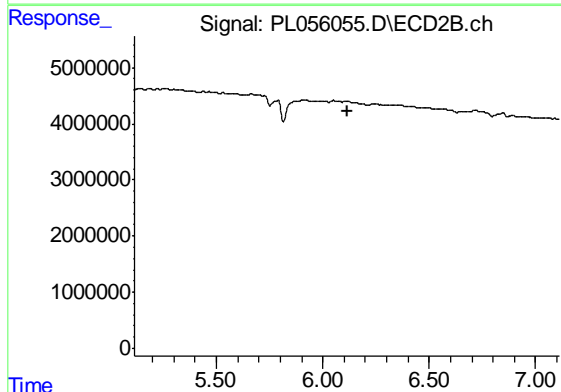
R.T.: 0.000 min
 Exp R.T. : 6.041 min
 Response: 0
 Conc: N.D.



#26 Chlordane-4

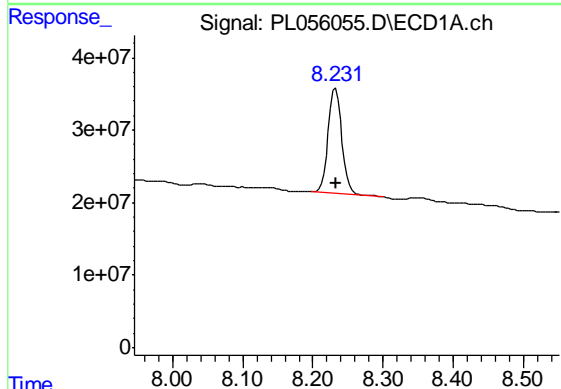
R.T.: 5.479 min
 Delta R.T.: -0.007 min
 Response: 9070664
 Conc: 8.80 ng/ml

Instrument :
 ECD_L
 ClientSampleId :
 JC-03-012320-B



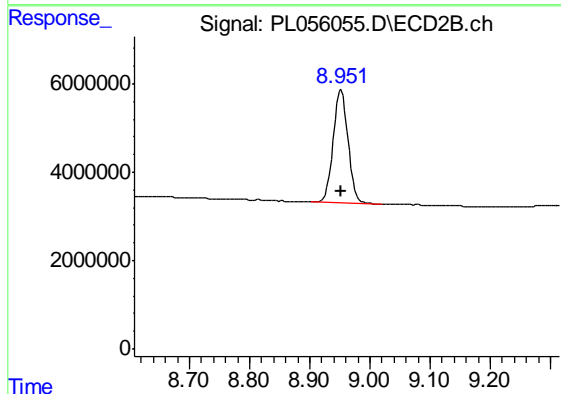
#26 Chlordane-4

R.T.: 0.000 min
 Exp R.T. : 6.114 min
 Response: 0
 Conc: N.D.



#28 Decachlorobiphenyl

R.T.: 8.232 min
 Delta R.T.: 0.000 min
 Response: 195782793
 Conc: 18.73 ng/ml



#28 Decachlorobiphenyl

R.T.: 8.952 min
 Delta R.T.: 0.000 min
 Response: 43915221
 Conc: 19.17 ng/ml