

Data Path : Z:\pestpcbsrv\HPCHEM1\ECD_L\Data\PL012422\
 Data File : PL072196.D
 Signal(s) : Signal #1: ECD1A.ch Signal #2: ECD2B.ch
 Acq On : 24 Jan 2022 18:19
 Operator : AR\AJ
 Sample : N1243-01
 Misc :
 ALS Vial : 21 Sample Multiplier: 1

Instrument :
 ECD_L
 ClientSampleId :
 AMI-1

Integration File signal 1: autoint1.e
 Integration File signal 2: autoint2.e
 Quant Time: Jan 25 02:07:46 2022
 Quant Method : Z:\pestpcbsrv\HPCHEM1\ECD_L\methods\PL011722.M
 Quant Title : GC Extractables
 QLast Update : Tue Jan 18 10:53:59 2022
 Response via : Initial Calibration
 Integrator: ChemStation

Volume Inj. : 1 µl
 Signal #1 Phase : ZB-MR2 Signal #2 Phase: ZB-MR1
 Signal #1 Info : 30M x 0.32mm x0.2 Signal #2 Info : 30M x 0.32mm x0.5µm

Compound	RT#1	RT#2	Resp#1	Resp#2	ng/ml	ng/ml

System Monitoring Compounds						
1) SA Tetrachlo...	4.555	5.492	11030532	31867454	19.868	19.621
28) SA Decachlor...	10.319	11.386	13515586	26151971	15.213	16.208
Target Compounds						
12) B 4,4'-DDE	7.555	8.494	1232447	2849090	1.707	1.506
16) A 4,4'-DDD	8.142	9.034	705717	2900066	1.204	2.028 #

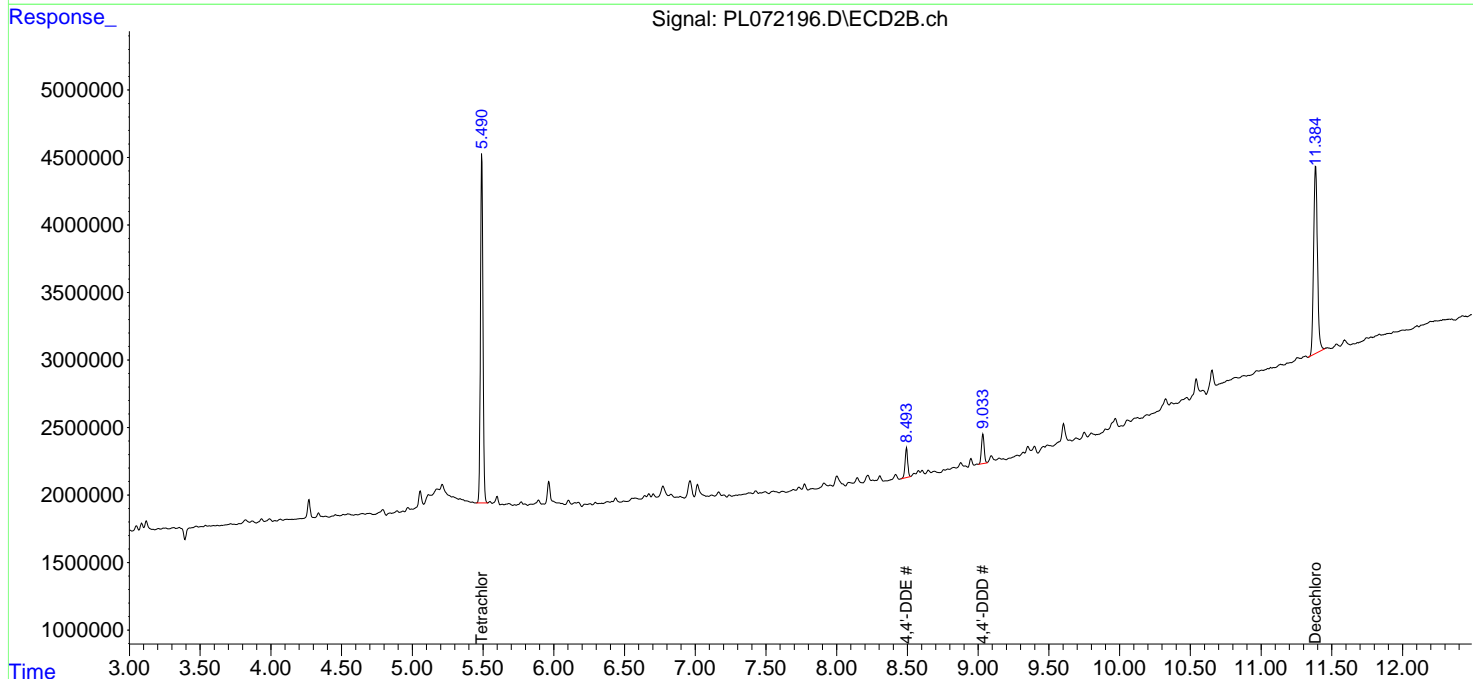
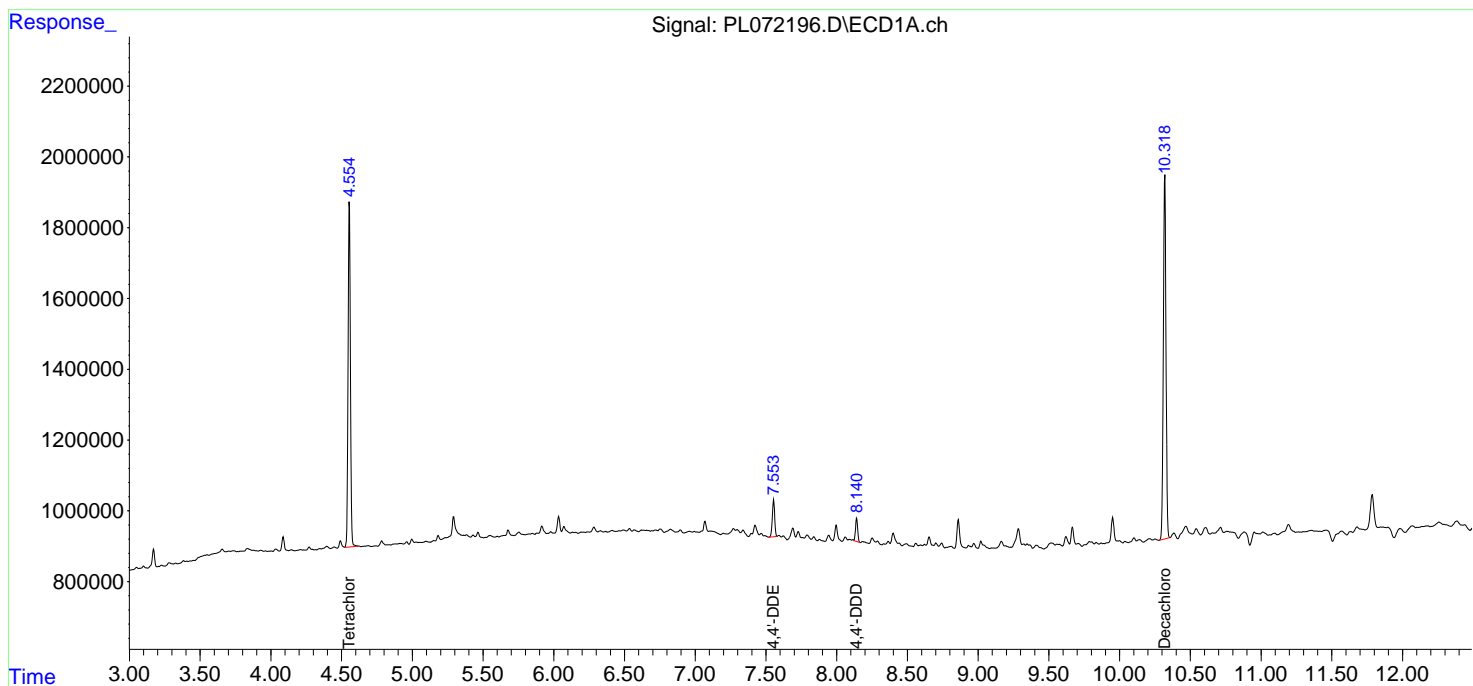
(f)=RT Delta > 1/2 Window (#)=Amounts differ by > 25% (m)=manual int.

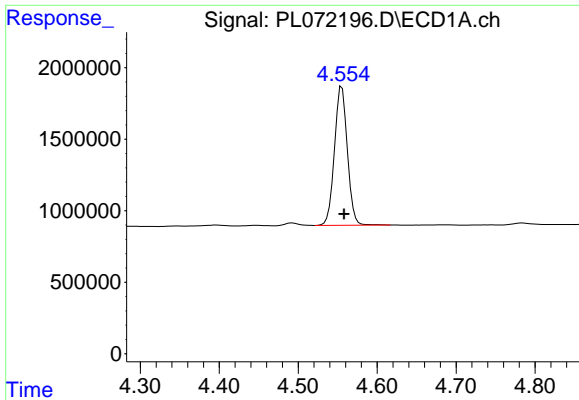
Data Path : Z:\pestpcbsrv\HPCHEM1\ECD_L\Data\PL012422\
 Data File : PL072196.D
 Signal(s) : Signal #1: ECD1A.ch Signal #2: ECD2B.ch
 Acq On : 24 Jan 2022 18:19
 Operator : AR\AJ
 Sample : N1243-01
 Misc :
 ALS Vial : 21 Sample Multiplier: 1

Instrument :
 ECD_L
 ClientSampleId :
 AMI-1

Integration File signal 1: autoint1.e
 Integration File signal 2: autoint2.e
 Quant Time: Jan 25 02:07:46 2022
 Quant Method : Z:\pestpcbsrv\HPCHEM1\ECD_L\methods\PL011722.M
 Quant Title : GC Extractables
 QLast Update : Tue Jan 18 10:53:59 2022
 Response via : Initial Calibration
 Integrator: ChemStation

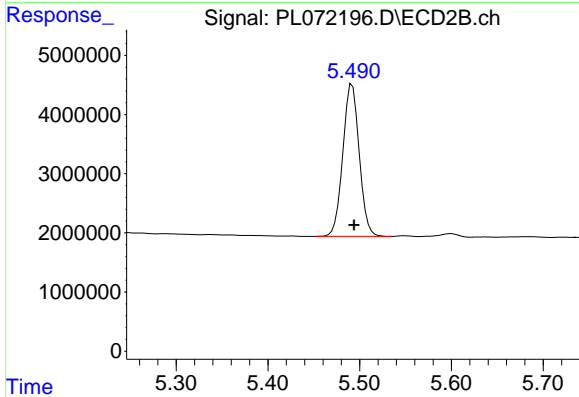
Volume Inj. : 1 µl
 Signal #1 Phase : ZB-MR2 Signal #2 Phase: ZB-MR1
 Signal #1 Info : 30M x 0.32mm x0.2 Signal #2 Info : 30M x 0.32mm x0.5µm



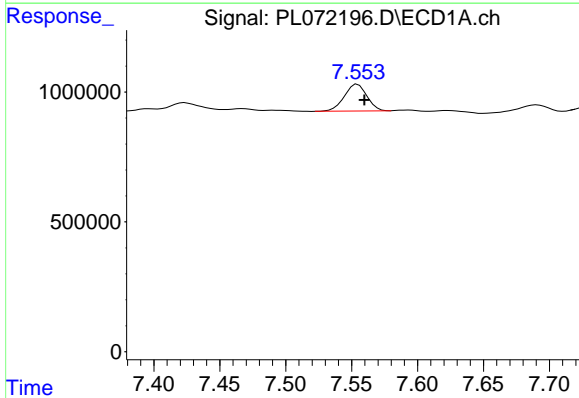


#1 Tetrachloro-m-xylene
 R.T.: 4.555 min
 Delta R.T.: -0.003 min
 Response: 11030532
 Conc: 19.87 ng/ml

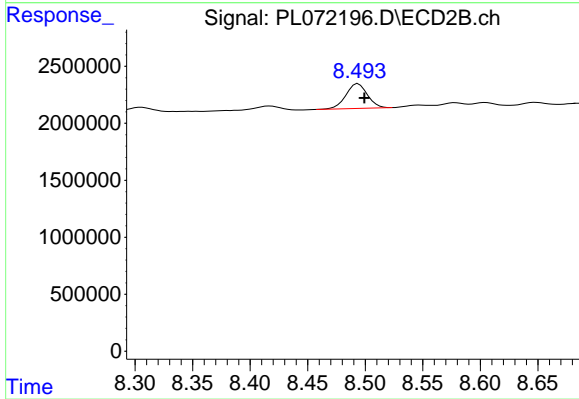
Instrument :
 ECD_L
 ClientSampleId :
 AMI-1



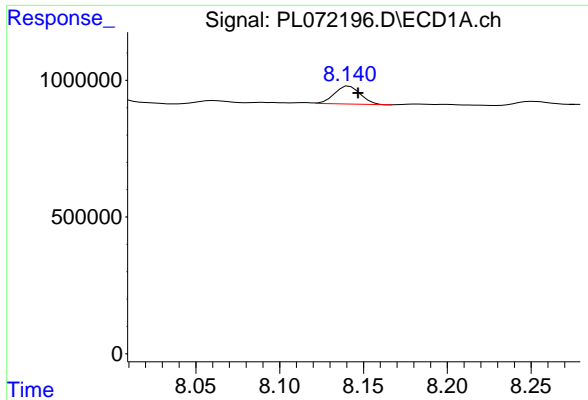
#1 Tetrachloro-m-xylene
 R.T.: 5.492 min
 Delta R.T.: -0.002 min
 Response: 31867454
 Conc: 19.62 ng/ml



#12 4,4'-DDE
 R.T.: 7.555 min
 Delta R.T.: -0.005 min
 Response: 1232447
 Conc: 1.71 ng/ml

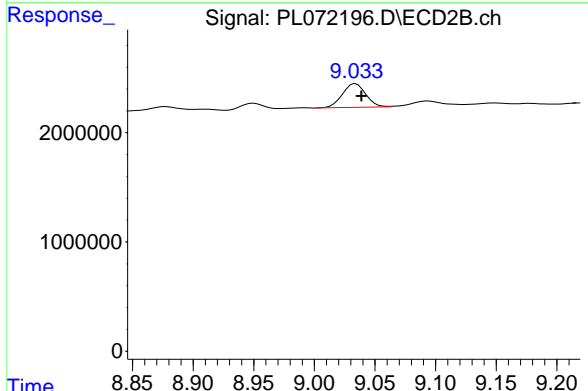


#12 4,4'-DDE
 R.T.: 8.494 min
 Delta R.T.: -0.005 min
 Response: 2849090
 Conc: 1.51 ng/ml

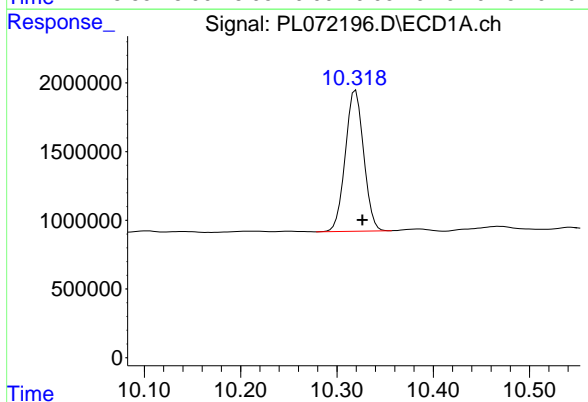


#16 4,4'-DDD
 R.T.: 8.142 min
 Delta R.T.: -0.005 min
 Response: 705717
 Conc: 1.20 ng/ml

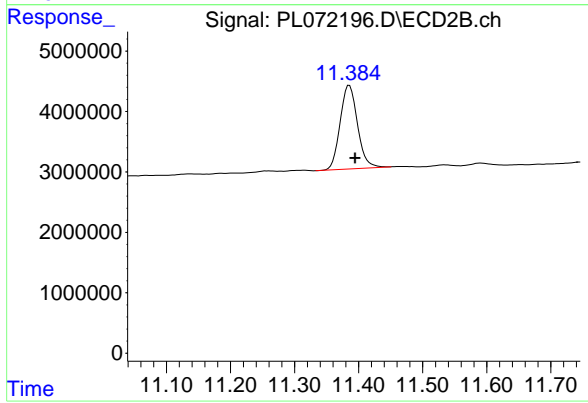
Instrument : ECD_L
 ClientSampleId : AMI-1



#16 4,4'-DDD
 R.T.: 9.034 min
 Delta R.T.: -0.005 min
 Response: 2900066
 Conc: 2.03 ng/ml



#28 Decachlorobiphenyl
 R.T.: 10.319 min
 Delta R.T.: -0.007 min
 Response: 13515586
 Conc: 15.21 ng/ml



#28 Decachlorobiphenyl
 R.T.: 11.386 min
 Delta R.T.: -0.009 min
 Response: 26151971
 Conc: 16.21 ng/ml